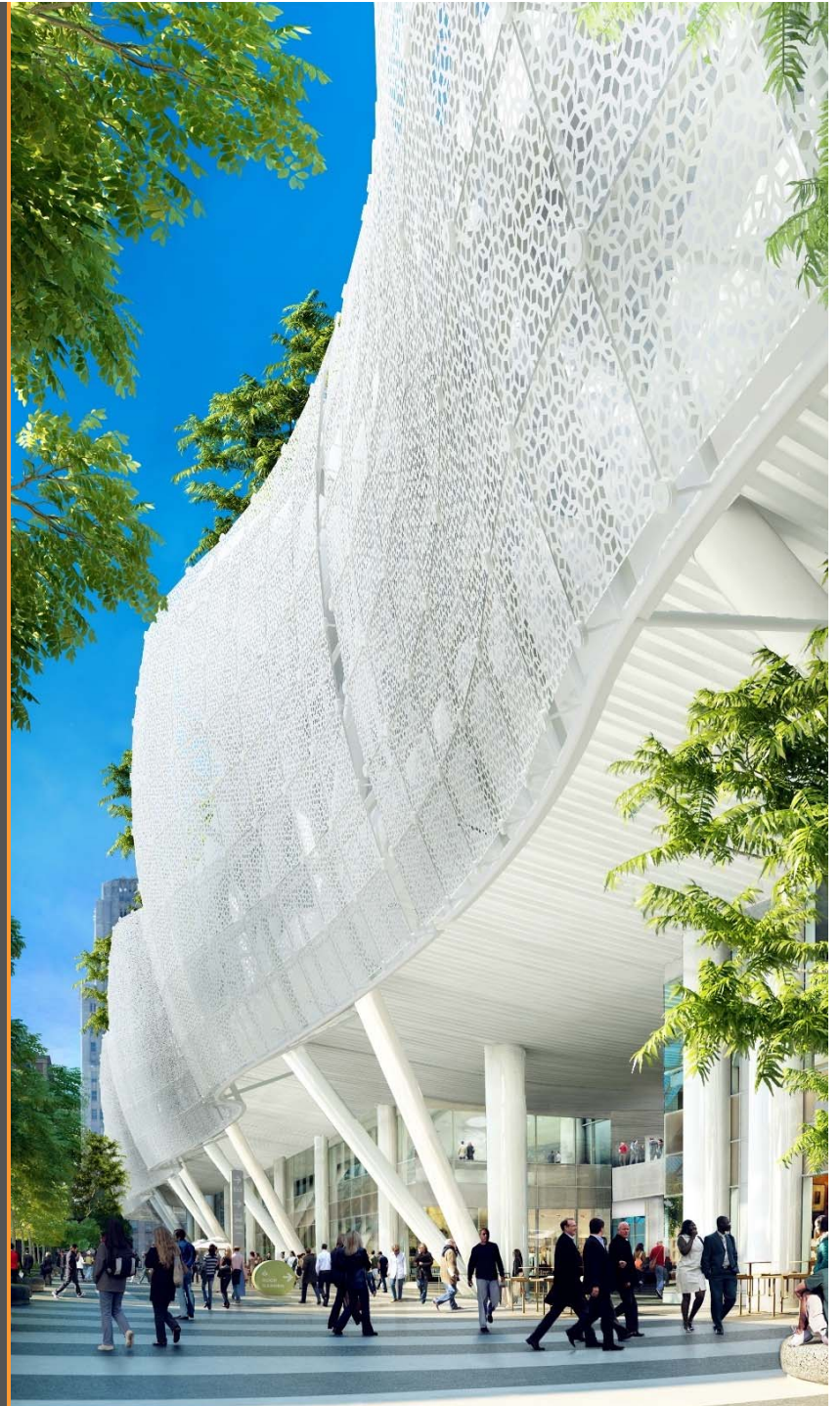


CRC Item No. 6 - February 16, 2018

# Construction Update



# Project Overview

---

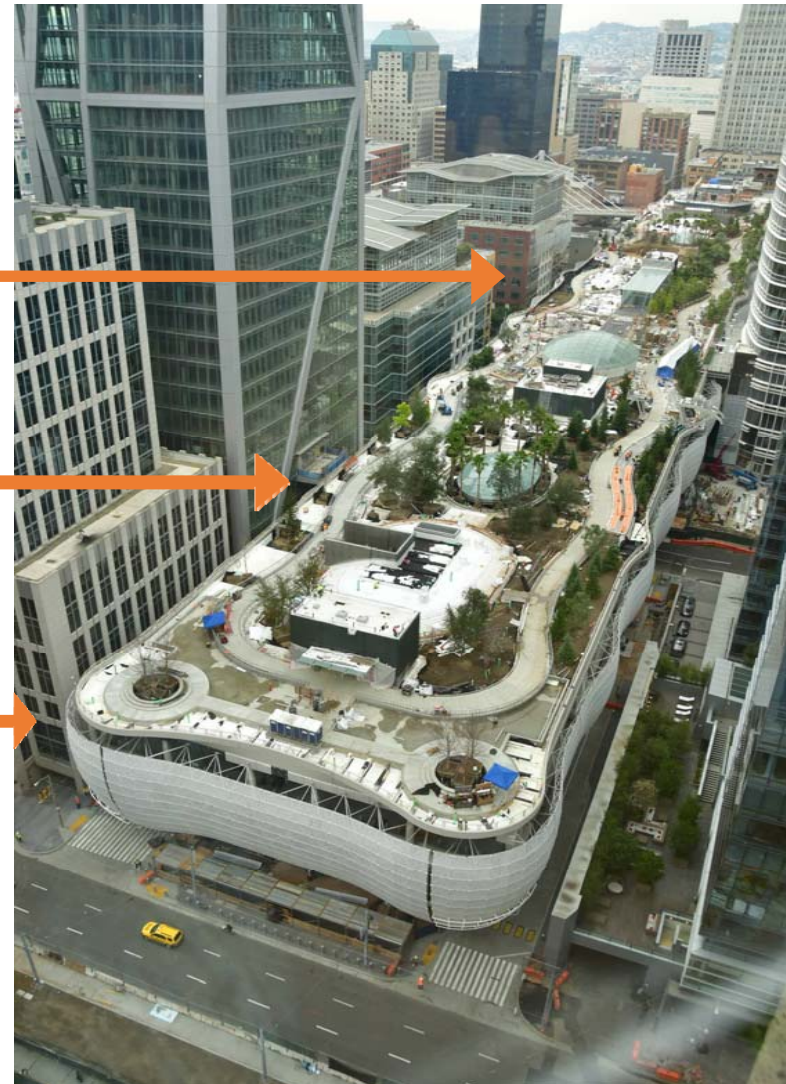
**Western Zone Grid Line 1-10**



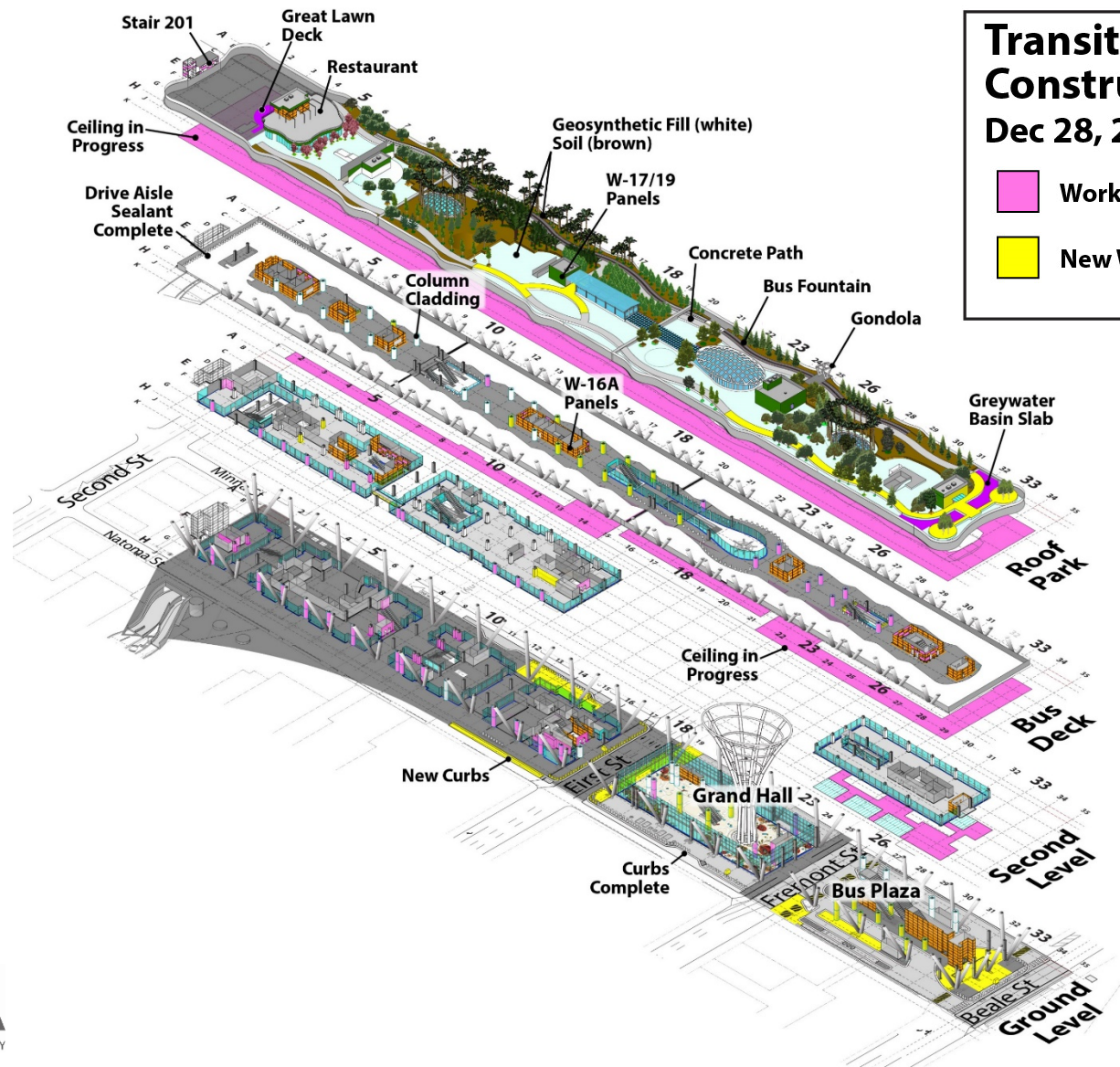
**Central Zone Grid Line 10-20**



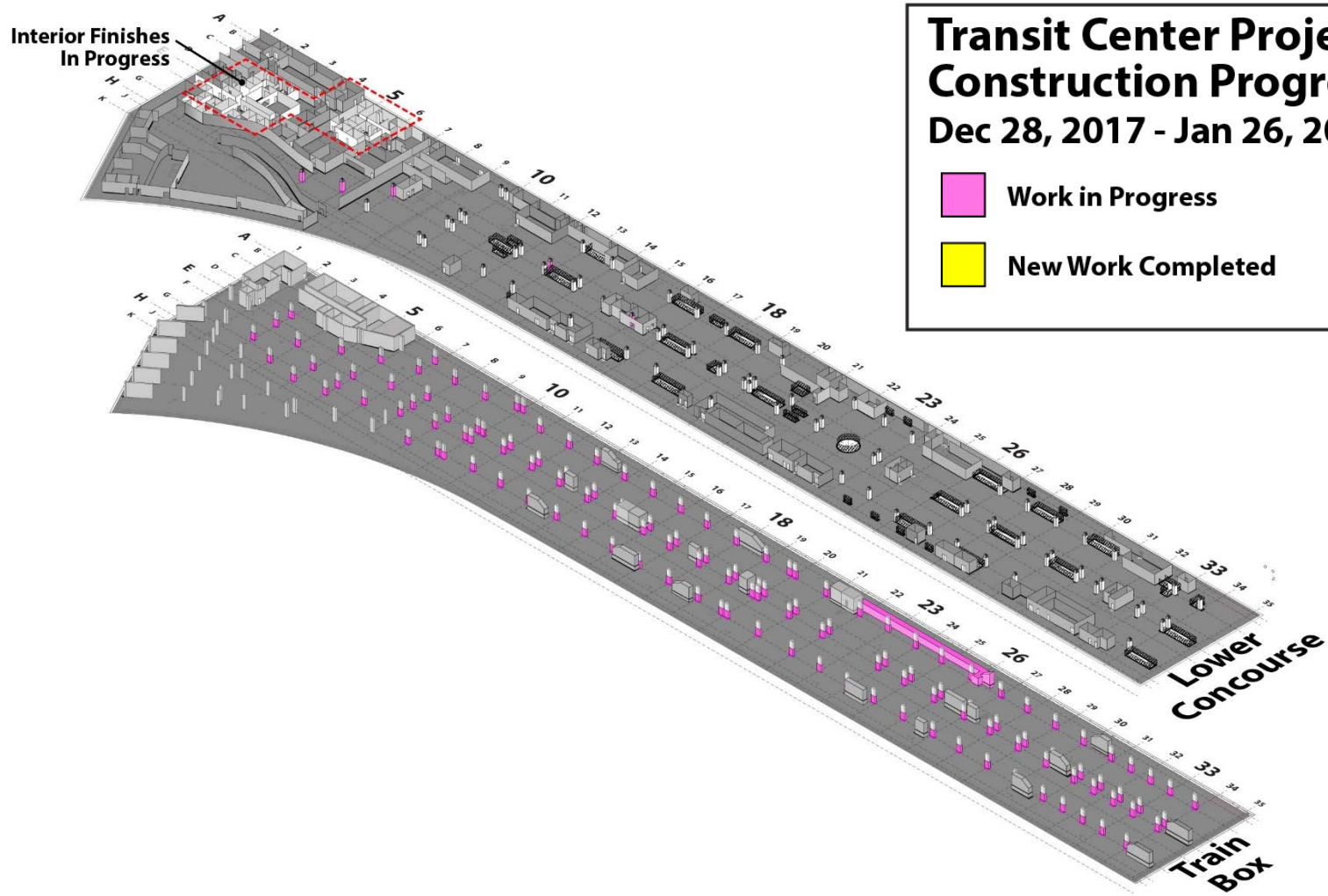
**Eastern Zone Grid Line 20-35**



# Recent Activity



# Recent Activity



# Construction Activity

Transit Center – West End (GL1-20)	Transit Center – East End (GL20-35)
<ul style="list-style-type: none"> <li>-Roof Amphitheatre construction underway.</li> <li>-Escalator canopy glass panels underway.</li> <li>-Rooftop landscaping well underway.</li> <li>-Rooftop granite pathway pavers underway.</li> <li>-Bus Deck Mechanical, Electrical, Plumbing underway including hydrotesting.</li> <li>-Bus Deck ceiling framing passenger island.</li> <li>-Bus Deck column covers in progress.</li> <li>-Bus Deck drive aisle coating complete.</li> <li>-Elevators and Escalators underway.</li> <li>-Ground Level sidewalks and roadways construction – Minna and Natoma.</li> <li>- Electrical power cable distribution continues. Electrical conduits continue.</li> <li>-Main Distribution (MDF) and Intermediate Distribution Frame (IDF) Rooms underway.</li> <li>-Equipment rooms buildout in progress.</li> <li>-Walls gypsum board and painting and Metal wall panels underway.</li> </ul>	<ul style="list-style-type: none"> <li>-Rooftop landscaping well underway.</li> <li>-Rooftop granite pathway pavers underway.</li> <li>-Bus Deck Mechanical, Electrical, Plumbing underway including hydrotesting.</li> <li>-Bus Deck ceiling drip panels underway.</li> <li>-Bus Deck column covers in progress.</li> <li>-Bus Deck drive aisle coating complete.</li> <li>-Elevator and Escalators underway.</li> <li>-Grand Hall sidewalks and roadways construction –Natoma in progress.</li> <li>-MUNI Bus Plaza drive aisle and pedestrian islands construction in progress.</li> <li>-Electrical power cable distribution continues. Electrical conduits continue.</li> <li>-Main Distribution (MDF) and Intermediate Distribution Frame (IDF) Rooms underway.</li> <li>-Equipment rooms buildout in progress.</li> <li>-Walls gypsum board and painting and Metal wall panels underway.</li> </ul>

# Grand Hall progress



# Bus Deck Level – Bus Passenger Island

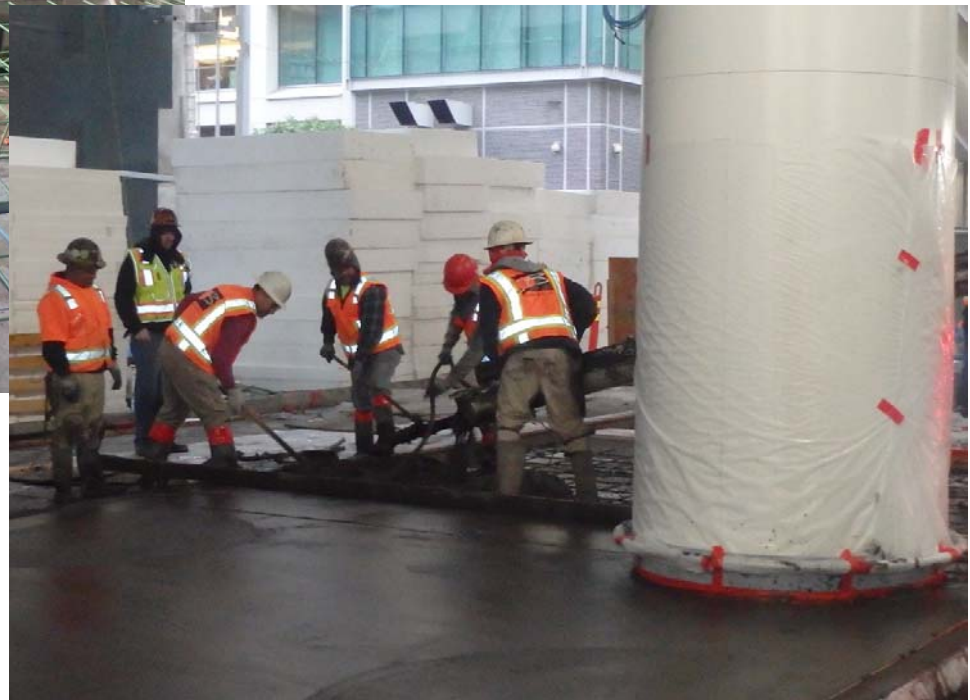


# Construction progress –Eastern Zone

Retractable wedge barrier at  
Fremont Muni Bus Plaza south



Concrete placement in passenger  
island -Muni Bus Plaza south





# Construction progress –Western Zone

Natoma Street buildout – west of First Street



Minna Street buildout- west



# Utility Construction progress

Traffic Signal Conduits and pull boxes



Underground Sanitary Sewer connection at Beale Street



# Rooftop Park –Amphitheater buildout



# MUNI Bus Plaza – Operation



# Tenant Improvement- Construction planning

---

Webcor Priority Room turnover to Lincoln Properties:

- Transit Center Mail Room #1380- Ground level.
- Greyhound Package Area Room #1221- Ground level.
- Greyhound [Amtrak] Passenger Waiting Area Room# 02220 – Level 2.
- Greyhound Passenger Service Room #3228 – Bus Deck level.
- Office Space - TJPA Offices Room # 02620- Level 2.

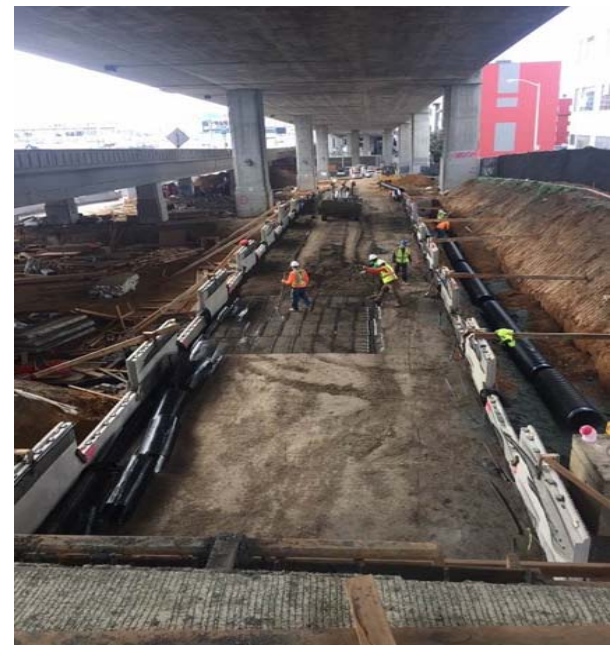
Lincoln Properties Room Buildout – Design Build:

- HVAC Bids advertised and site walk downs complete.
- Wall Framing Bids advertised and site walk downs complete.
- Safety Coordination between Turner Special Projects and Webcor-Obayashi completed.
- Outreach for LBE/SBE contractors completed.
- Outreach to SF Building Trades Council per PLA Project Labor Agreement.

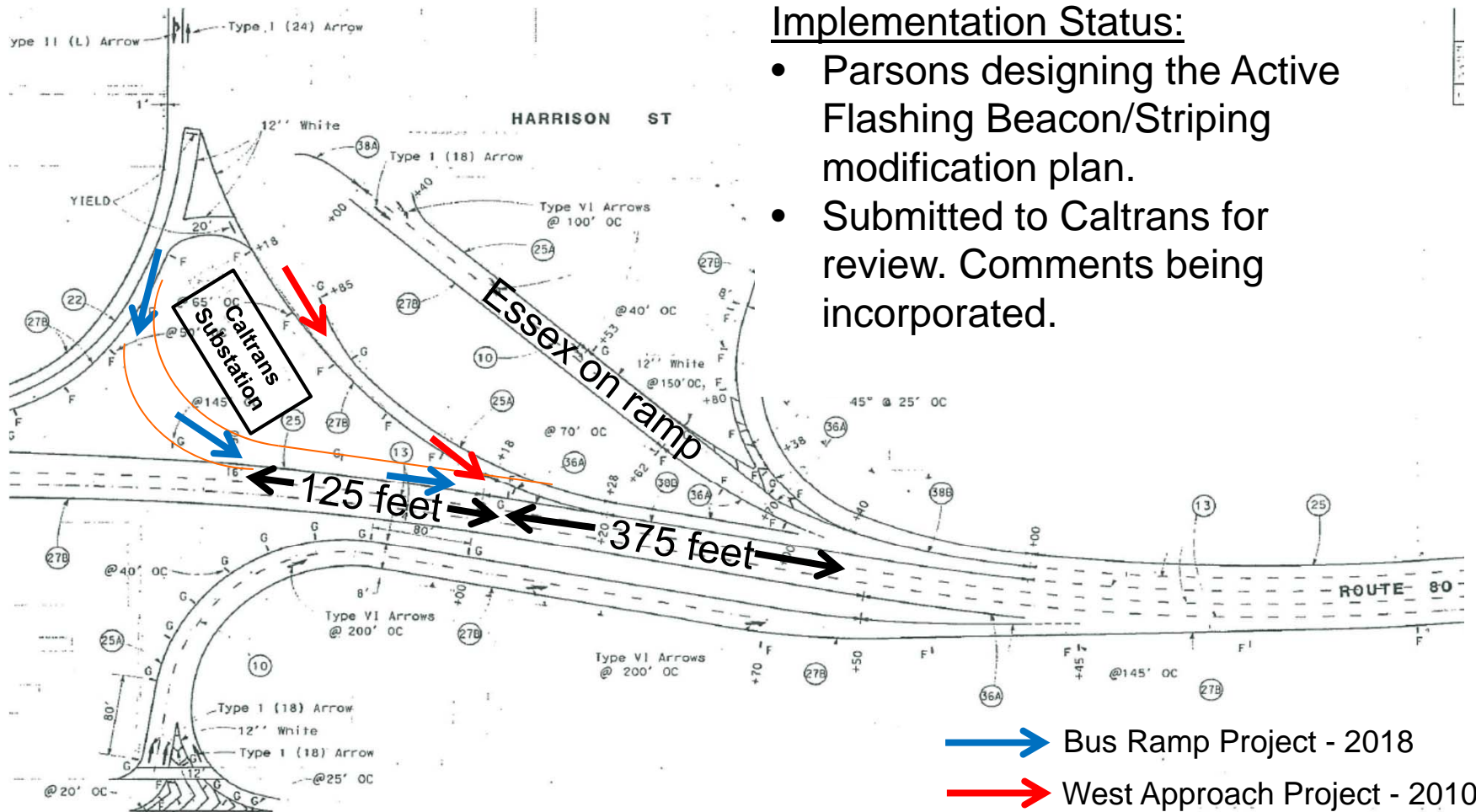
# Bus Storage Facility

## Construction Progress

- Excavation/grading ongoing.
- Underground Utilities in progress.
- Retaining Wall Rebar & concrete pours ongoing.
- Bridge stem & soffit poured.
- Bridge deck poured. Falsework removal is completed mid-January.
- MSE Mechanically Stabilized Earth walls in progress and will complete in early February.
- Sound wall (noise attenuation) construction has started.
- Retaining Walls are in progress, near 80% complete.



# Bus On-Ramp Merge Status



## Implementation Status:

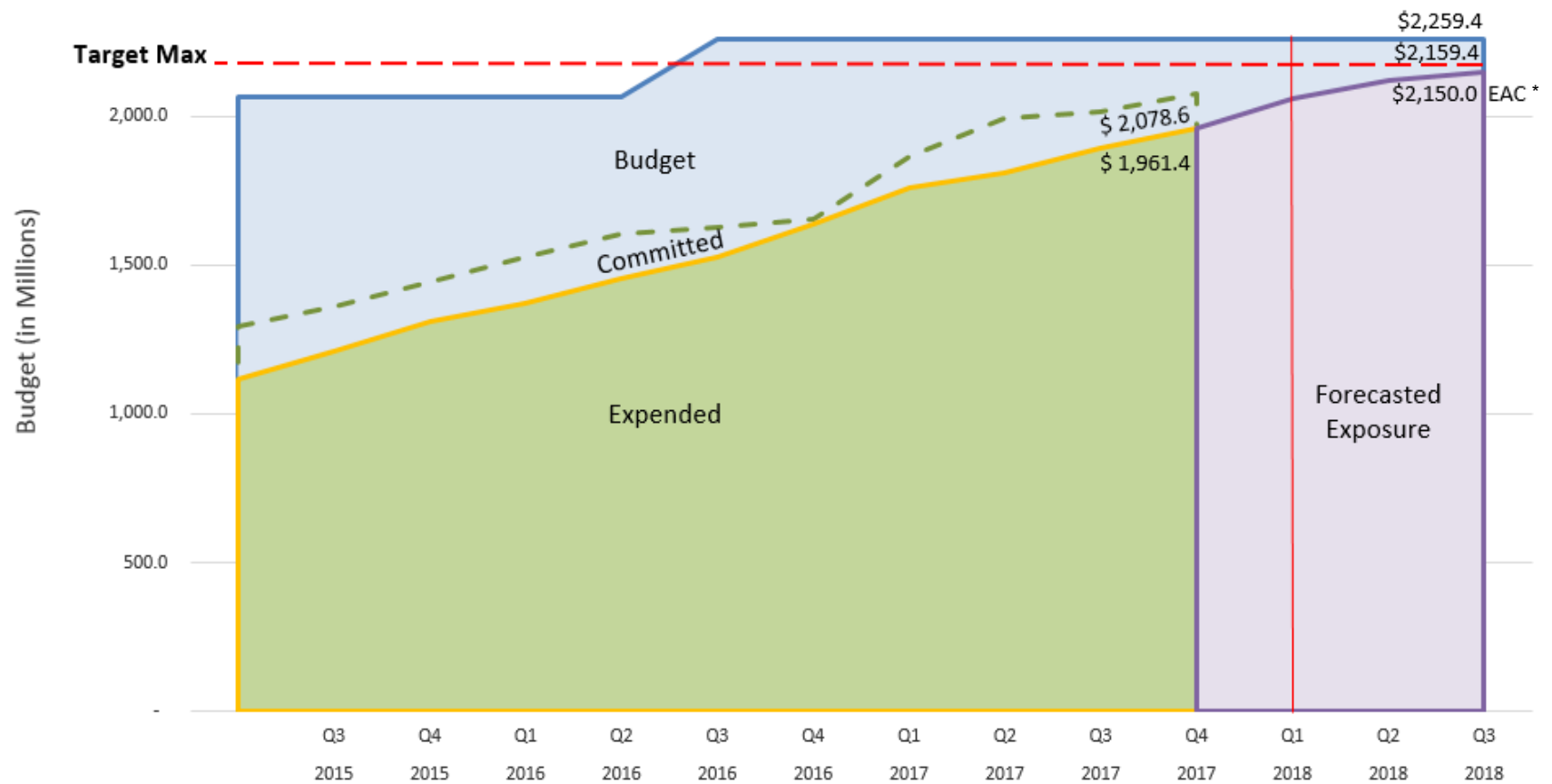
- Parsons designing the Active Flashing Beacon/Striping modification plan.
- Submitted to Caltrans for review. Comments being incorporated.

- ➡ Bus Ramp Project - 2018
- ➡ West Approach Project - 2010

# Budget

## Phase 1 - Transbay Program

Data thru: December '17





# Phase 1 Budget & Commitments (in millions)

---

	<u>Budget</u>	<u>Committed</u>	<u>Expended</u>	<u>Balance</u> (Budget less Committed Costs)
Construction Costs	\$1,515.0	\$1,488.3	\$1,386.8	\$26.7
Program-wide Costs (Soft Costs)	\$602.6	\$590.3	\$574.5	\$12.3
Contingencies & Reserves	\$141.8	\$0.0	\$0.0	\$141.8
<b>TOTAL</b>	<b>\$2,259.4</b>	<b>\$2,078.6</b>	<b>\$1,961.4</b>	<b>\$180.8</b>

# Contingency Cost

## Contingency Tracking (\$millions)

	Construction Contingency	CM/GC Contingency	Program Reserve	Total Contingency & Reserve
<b>Baseline Budget Amounts</b>	<b>\$61.8</b>	<b>\$32.5</b>	<b>\$117.0</b>	<b>\$211.3</b>
<b>Contingency Usage Through Dec 2017</b>	(\$40.8)	(\$4.7)	(\$24.0)	(\$69.5)
<b>Remaining Baseline Budget Amounts (Dec 2017)</b>	<b>\$21.0</b>	<b>\$27.8</b>	<b>\$93.0</b>	<b>\$141.8</b>
<b>Total Draws/Adds January 2018</b>	(\$2.0)	\$0.1	(\$0.0)	(\$1.9)
<b>Remaining Balances</b>	<b>\$19.0</b>	<b>\$27.9</b>	<b>\$93.0 *</b>	<b>\$139.9</b>

### Uses of Contingency this period

Bus Storage off-haul/disposal unit price adjustment and other changes, Transit Center Building revisions to rebar, storm water mitigation and other plumbing changes, changes to wedge barriers, temporary scaffolding.

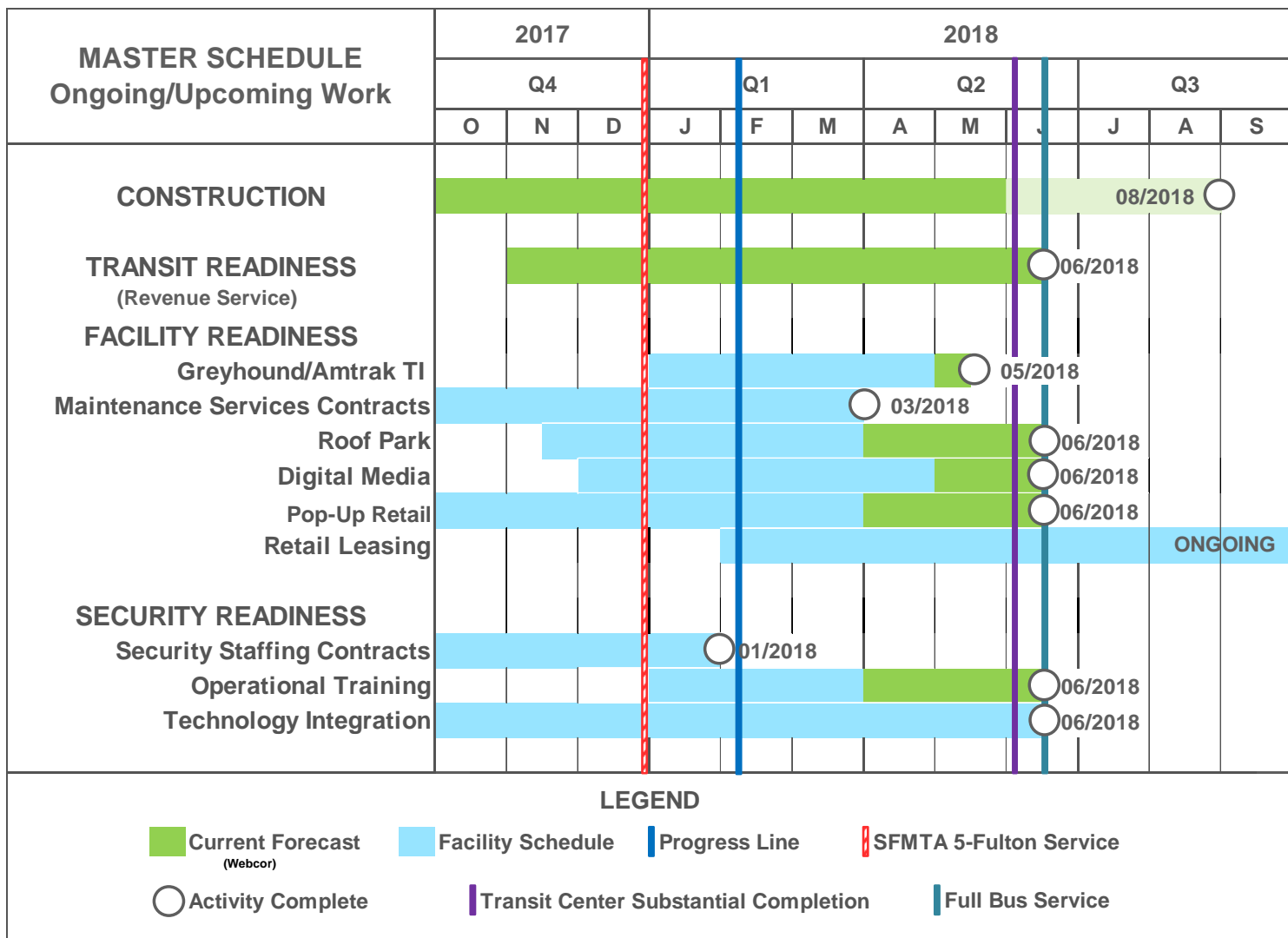
### Forecasted Contingency Use

CM/GC: \$0.8M

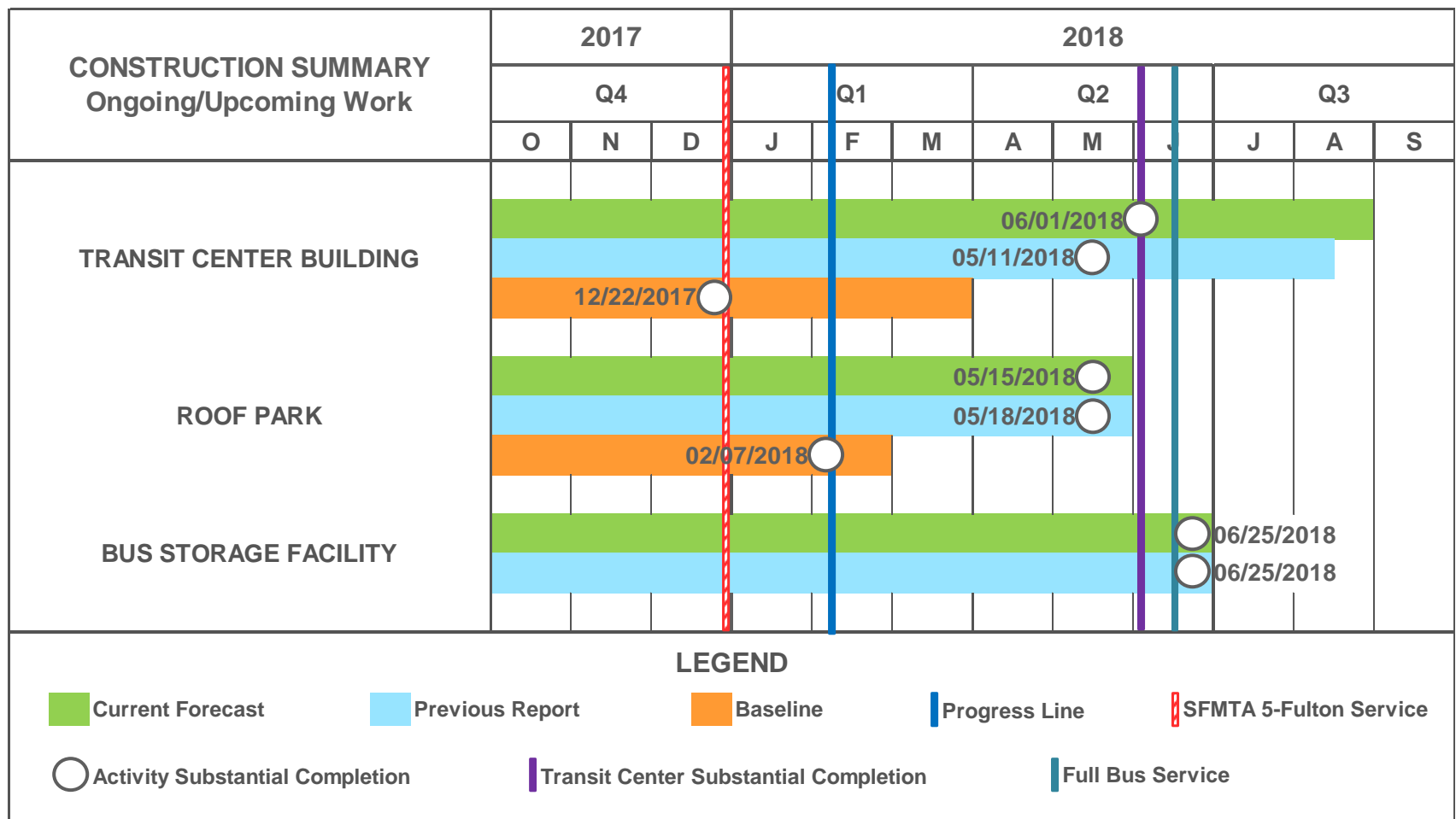
Construction: \$1.6M

Program Reserve: \$0.0

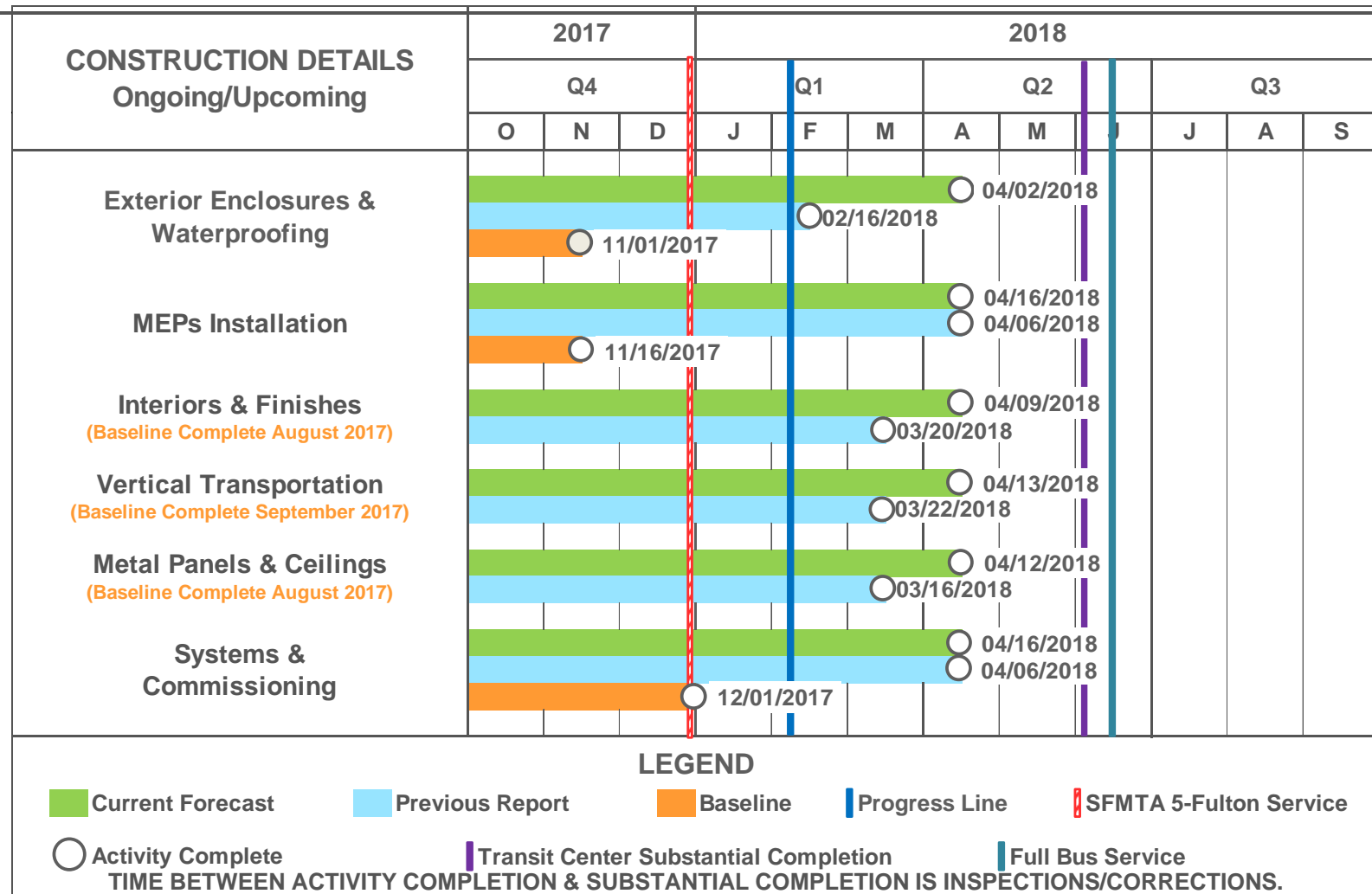
# Schedule



# Schedule



# Schedule



# Risks

---

## Schedule

Increased monitoring of Schedule Milestones indicate a mix of met and missed milestones yielding a net loss of schedule in the past month. Substantial Completion is currently forecasted for June 1, 2018.

Challenged Activities include:

1. Electrical Subcontractor continues meet an unsatisfactory level of milestone achievement.
2. Electrical Subcontractor's unmet commitments to Fabrication and Installation of E2 Pylons at Roof Park Level schedule.
3. Completion and Energizing of SFPUC power distribution vaults.
4. State of Completion Inspection Readiness.

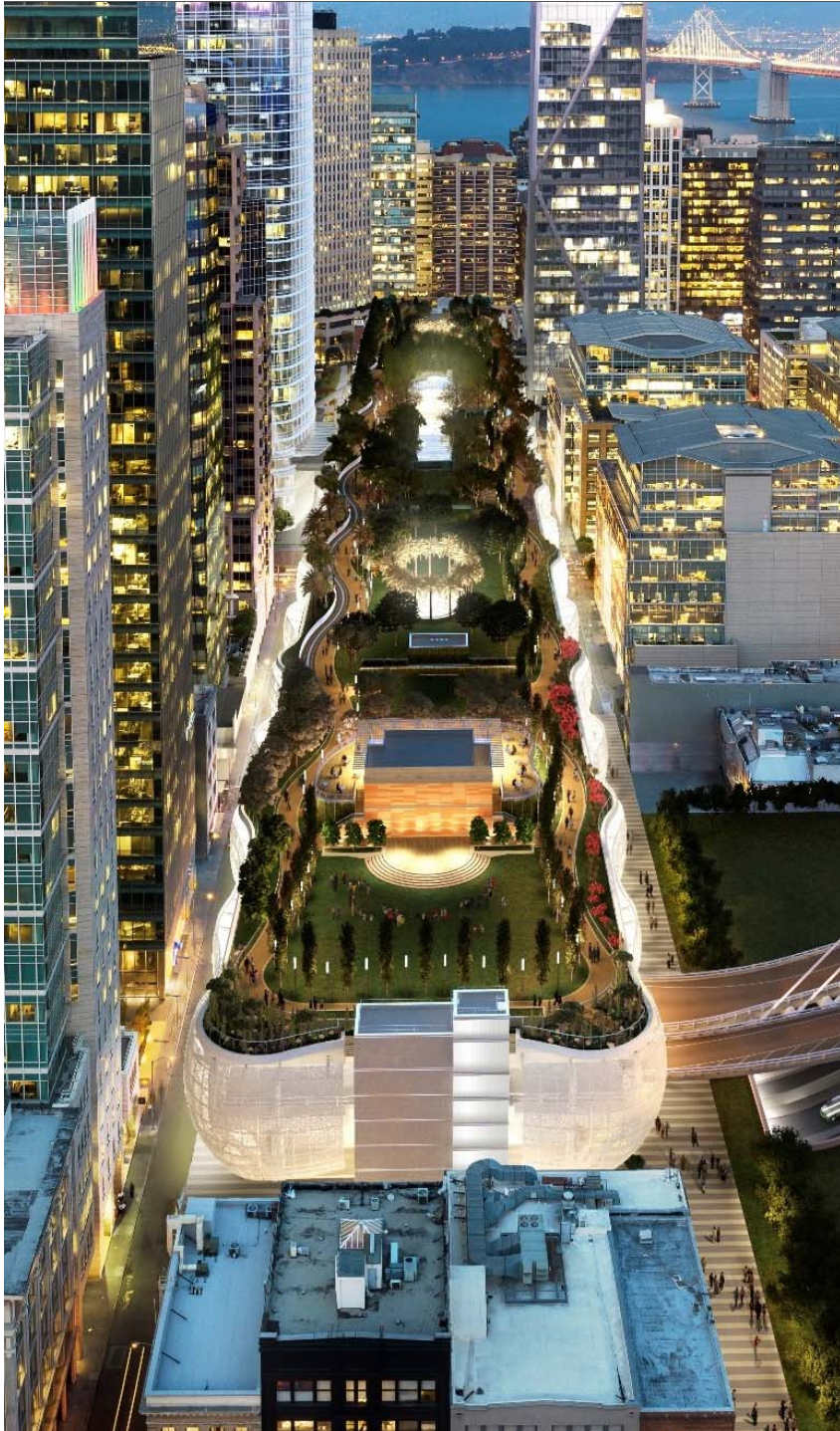
# Risks

---

## Mitigation Measures

WOJV Mitigation Strategy Update:

1. Recent Low Voltage Scope transfer from Fisk to Rosendin Electric.
2. Additional Supplementation of Normal Voltage Electrical Work continues.
3. Scope Shift Between Subcontractors for Site Concrete Continues.
4. Column Cover Installation Progressing with Original Subcontractor.
5. Addressing Interior Finish concerns with Supplementation of Crews.
6. Concentrated effort between WOJV, SFPUC, and TJPA towards Completion and Energizing of SFPUC power distribution vault.
7. WOJV introduced additional Close-out Management to address State of Completion Inspection Readiness concerns.



# Questions?

**TJPA**  
TRANSBAY JOINT POWERS AUTHORITY

201 Mission Street, Suite 2100 San Francisco, CA 94105 • 415.597.4620 • [www.tjpa.org](http://www.tjpa.org)