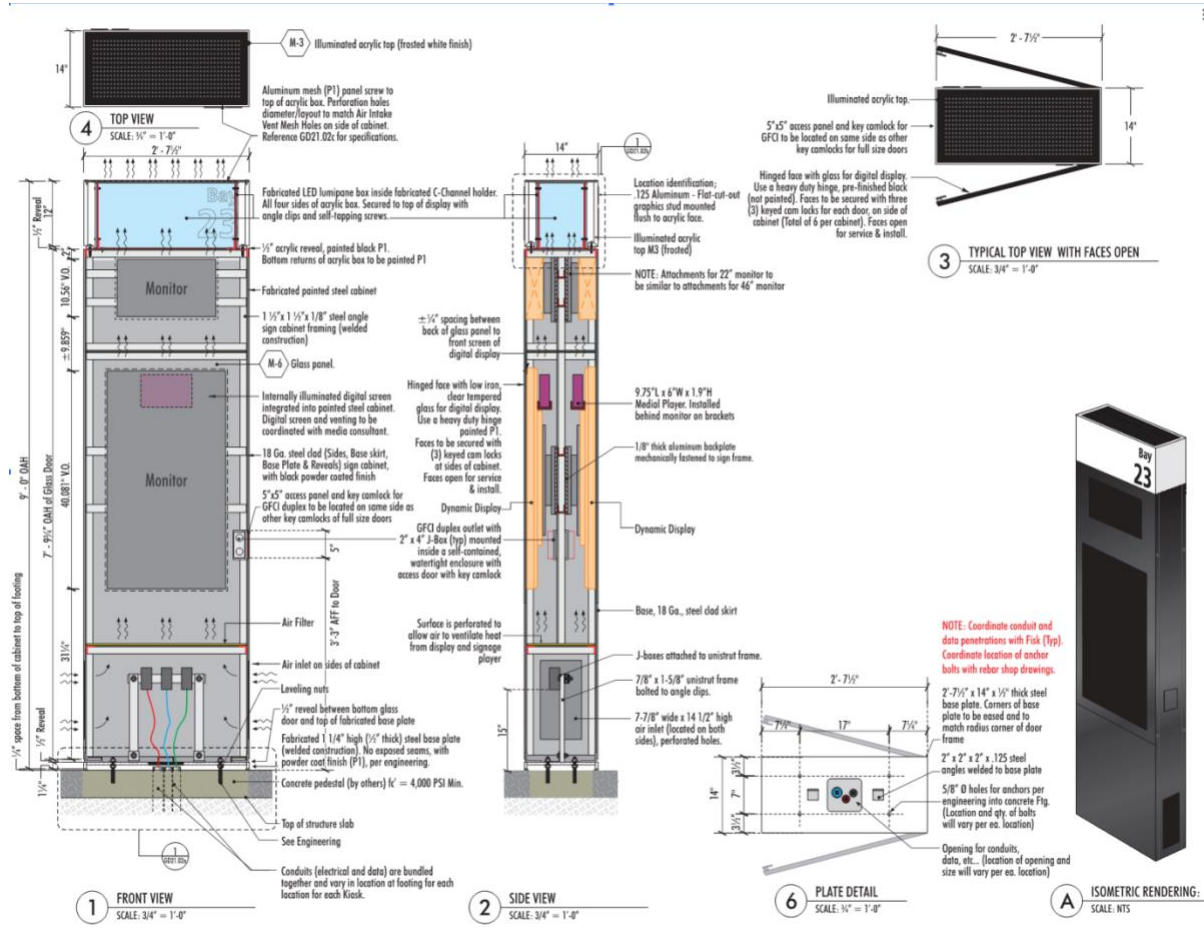


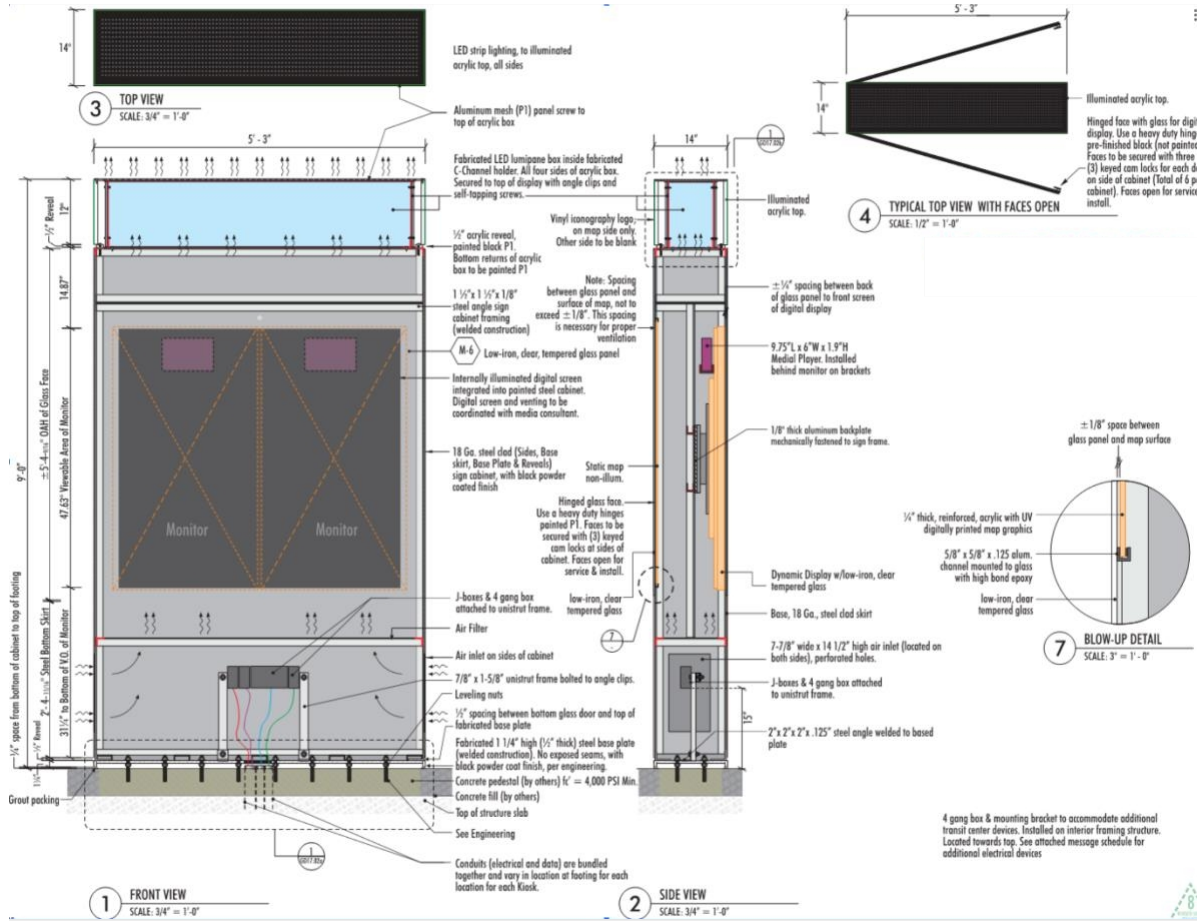
RFP 23-05 Media Player Replacement Services - Attachment 5 Reference Documents

SALESFORCE TRANSIT CENTER KIOSKS

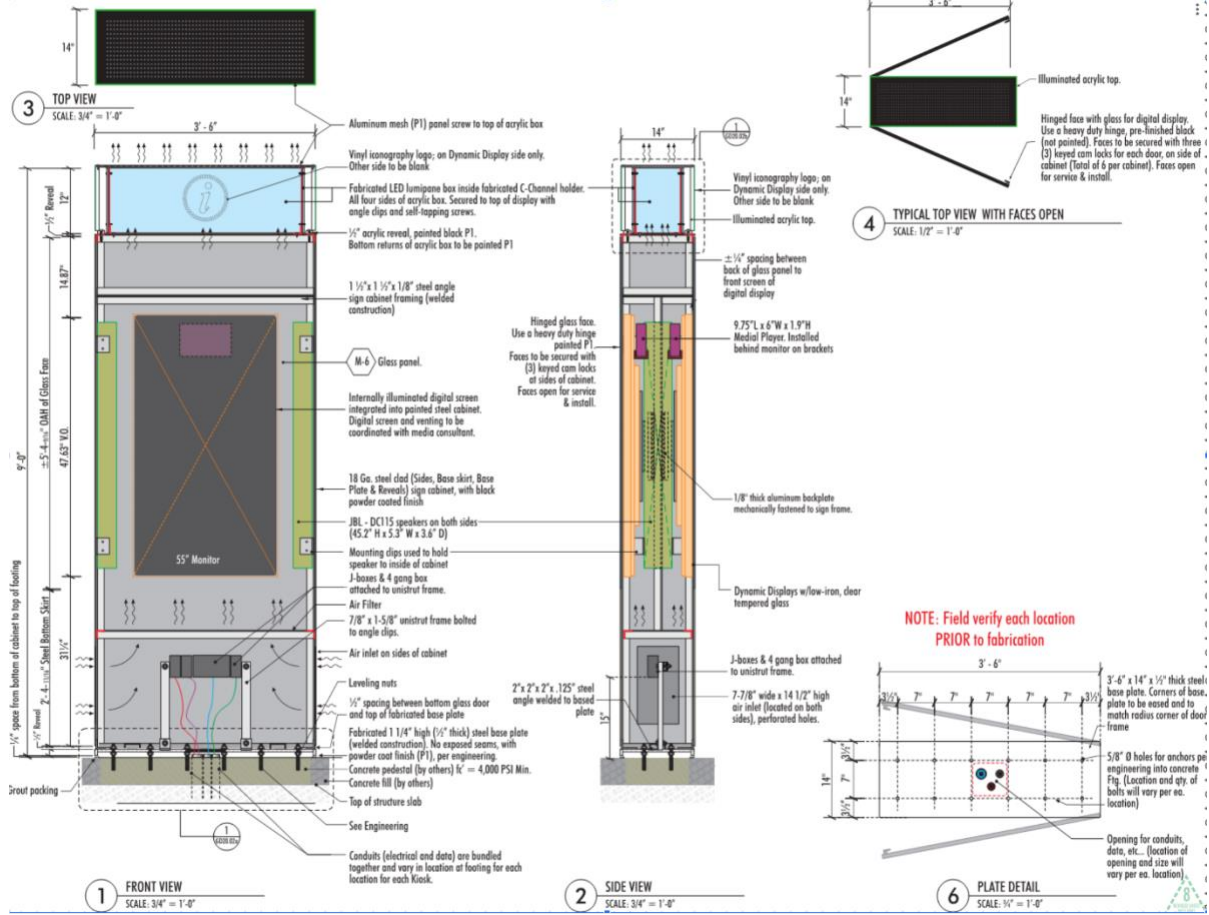
PD1 (BUS DECK "BAY" PYLONS)



KM1 (GH INFORMATIONAL KIOSKS)

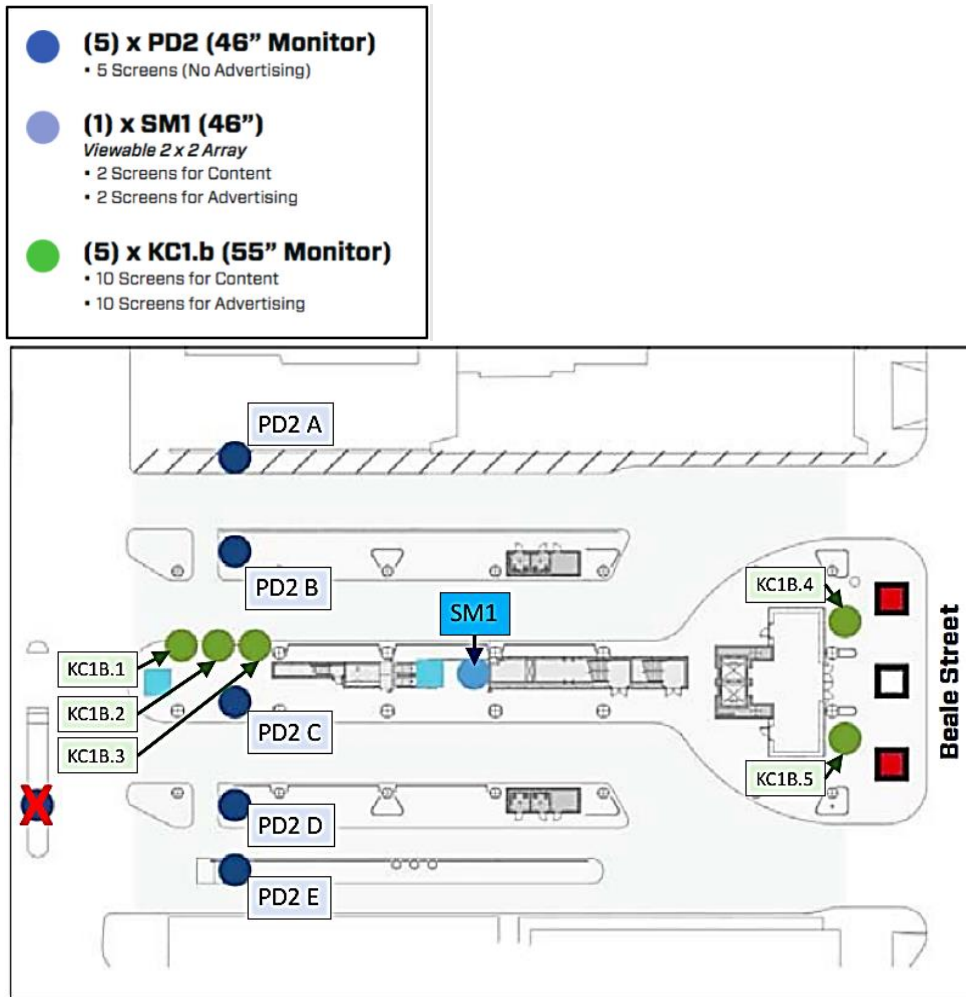


KP3 (BUS DECK DOUBLE SIDED INFORMATIONAL KIOSK)

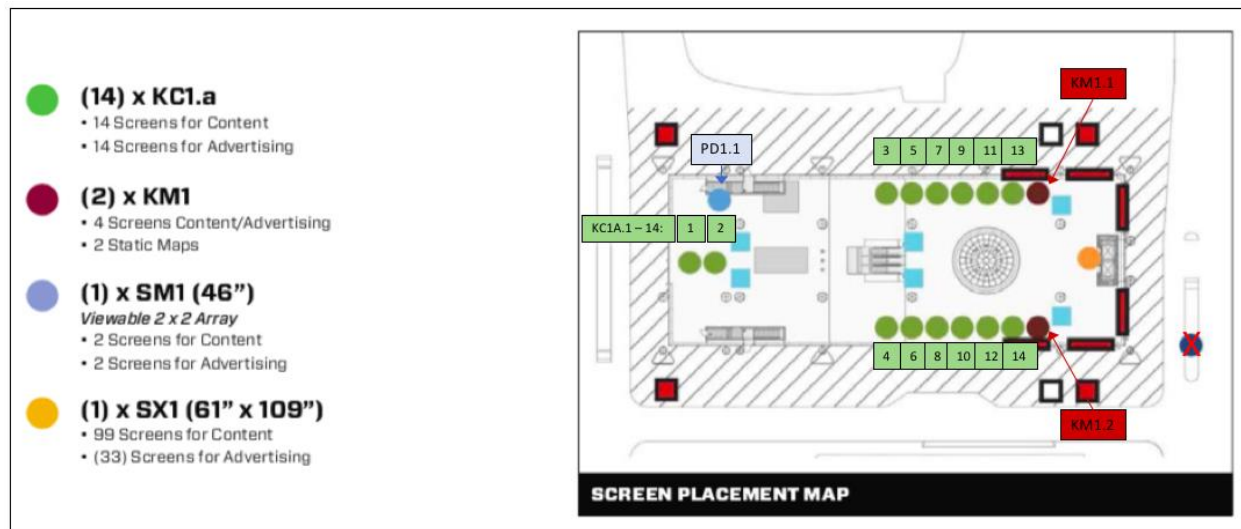


KIOSK PLACEMENT MAPS

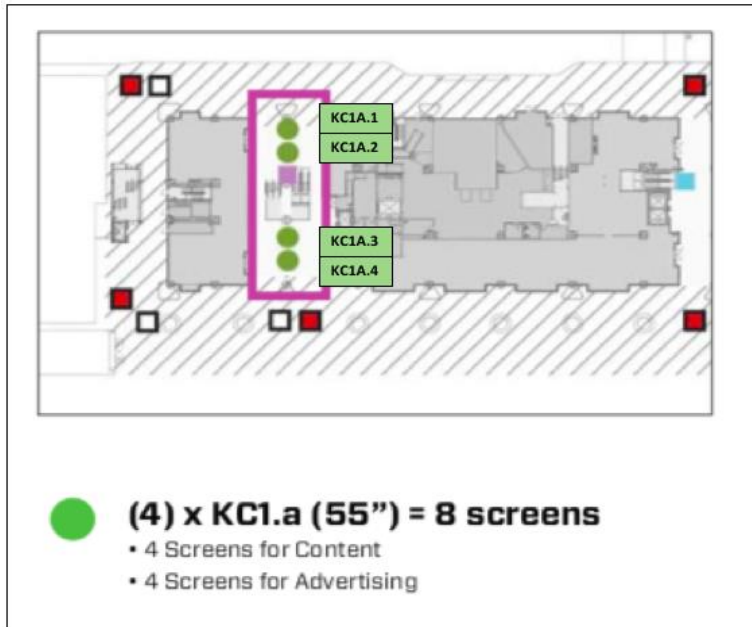
Bus Plaza



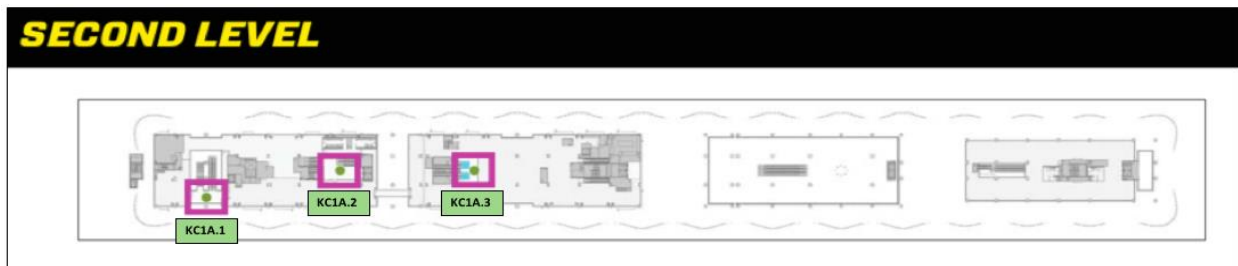
Grand Hall



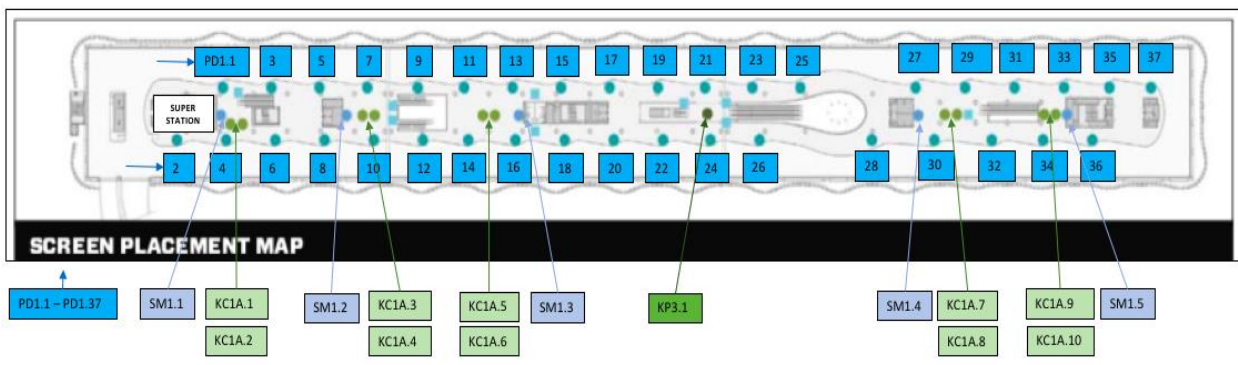
Natoma Walkway



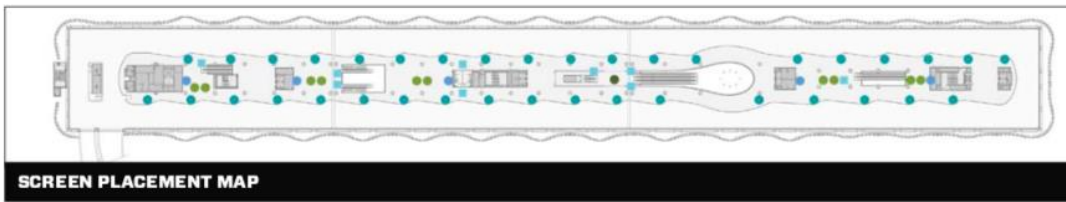
Second Level



Bus Deck



BUS DECK LEVEL



- (10) x KC1.a (55")**

 - 10 Screens for Content
 - 10 Screens for Advertising
- (37) x PD1**

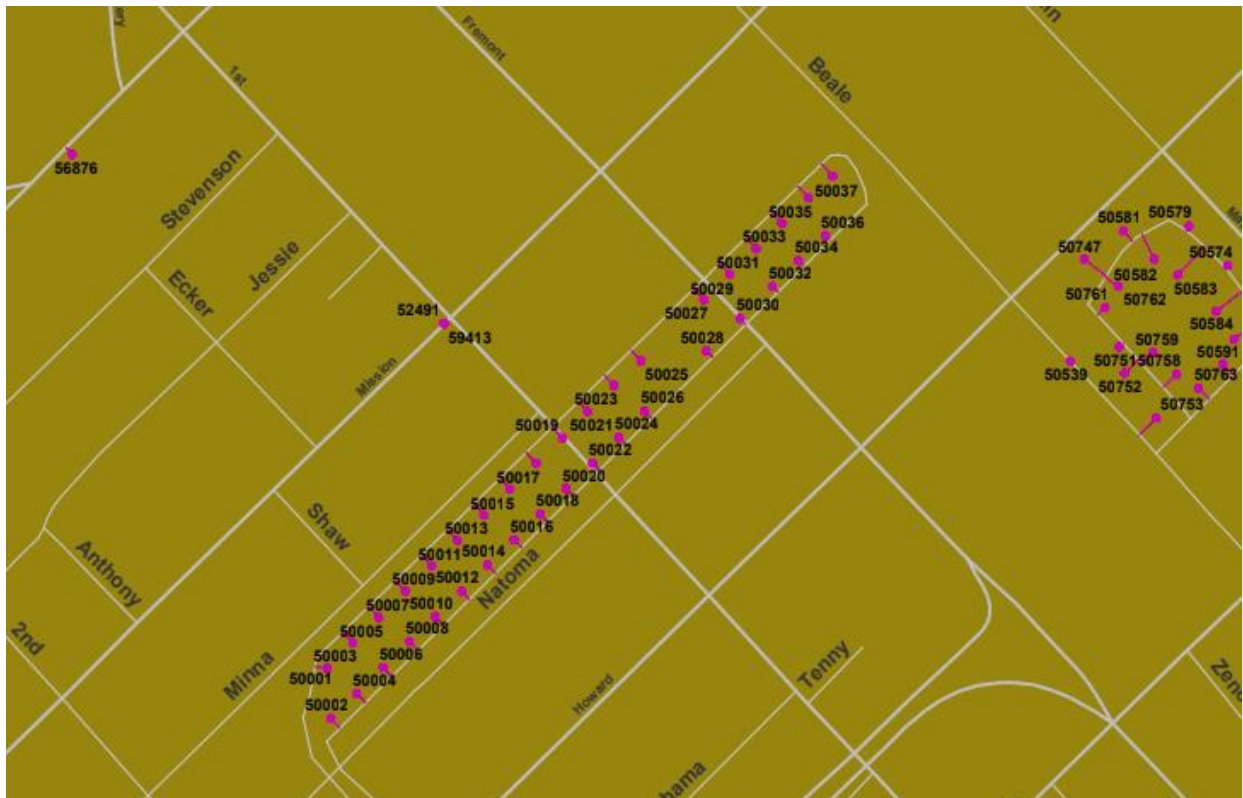
46" Monitor / 40" viewable + 22" Monitor:

 - 37 w/ 46" Monitors - 40" viewable - Transit Content
 - 37 w/ 46" Monitors - 40" viewable - 100% Advertising (PD1 - shared)
 - 74 w 22" Monitors - Bus Info
- (1) x KP3 (55")**

 - 2 Screens for Advertising w/ audio
- (5) x SM1 (46")**

Viewable 2 x 2 Array

 - 5 Screens for Content
 - 5 Screens for Advertising



Rooftop Park
No map provided

Commercial Space

