



Construction Update

June 2016

Transbay Transit Center

TJPA





Transbay Transit Center

Western Zone
Gridlines 1 to 10

Central Zone
Gridlines 10 to 20

Eastern Zone
Gridlines 20 to 35

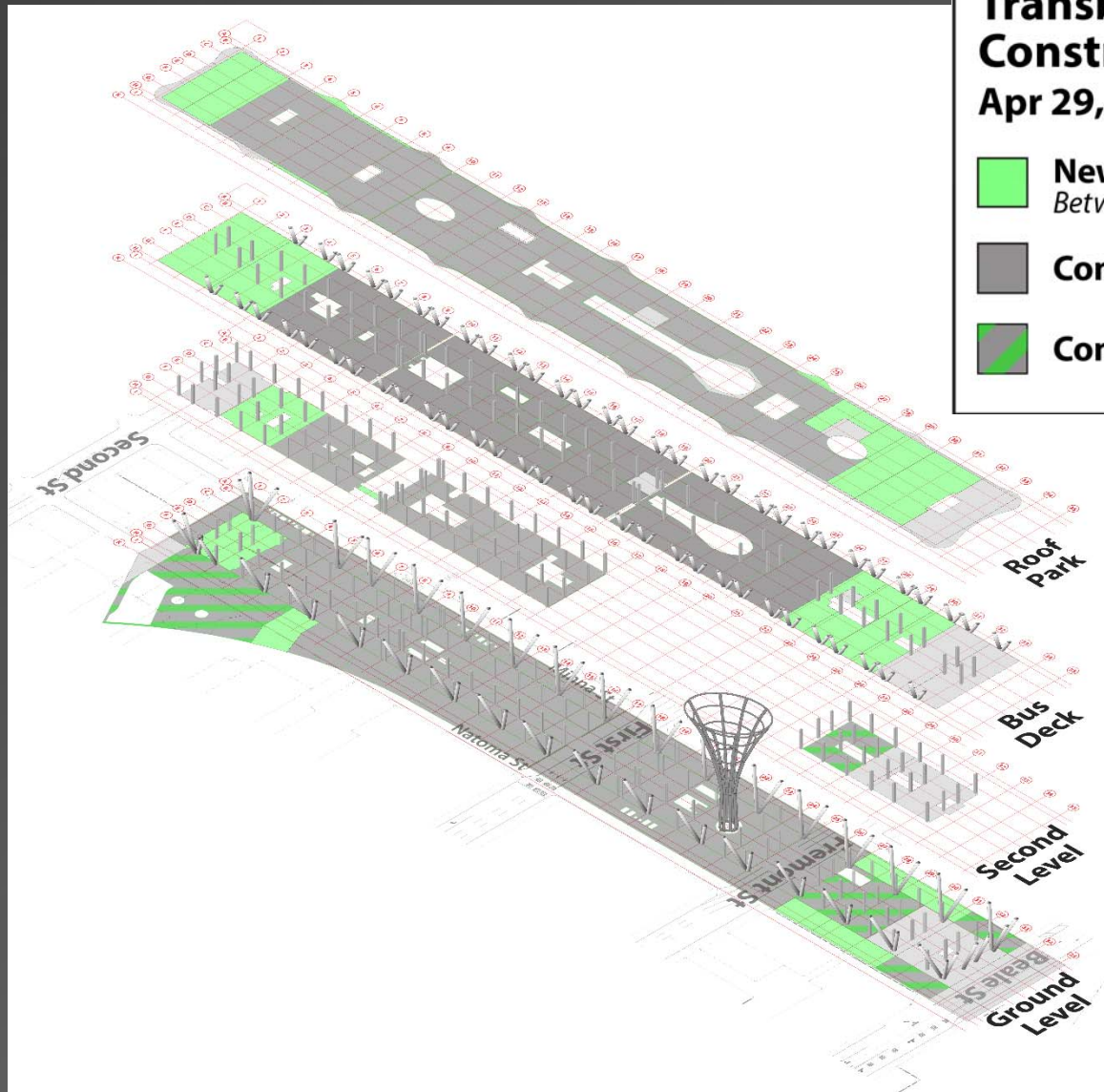


Project Overview




1. Recent Activity
2. Upcoming Activity
3. Safety & Labor Statistics
4. Budget Overview
5. Contingency Cost
6. Schedule
7. Challenges



Transit Center



Transbay Transit Center Construction Progress Apr 29, 2016 - May 26, 2016

-  **New Work Completed**
Between 4/29/16-5/26/16
-  **Concrete Slab**
-  **Concrete Slab In Progress**



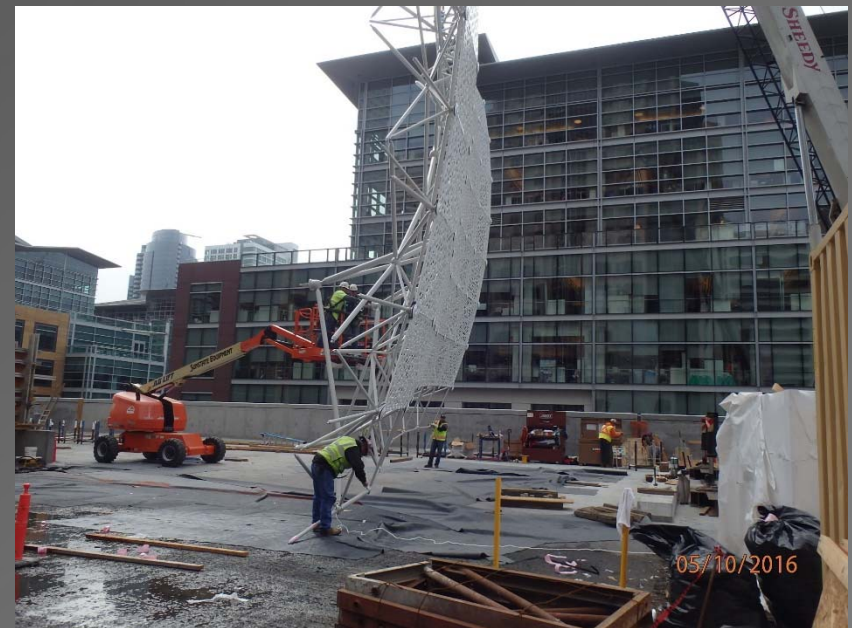
Western Zone (GL 1-10)

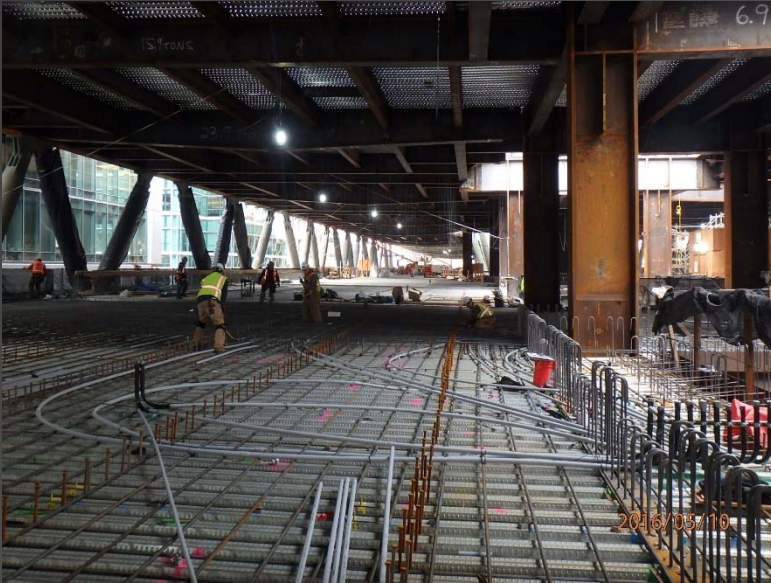
- Formwork, rebar and concrete placement for the southwest part of the Trainbox lid continues.
- The concrete columns and upper walls for the Vehicle and Bicycle Ramps continues.
- Bus deck and Roof deck concrete placement completed this period.
- Concrete foundations for Stair 201 (west end) continues.
- Mechanical/Electrical/Plumbing/Fire Sprinkler (MEPF) sleeves and hangers installation continues.
- Electrical room concrete and Concrete Masonry Unit (CMU) wall installation in progress.



Central Zone (GL 10-20)

- Spray-Applied Fireproofing continues at all levels.
- MEPF trades continue with piping and HVAC duct work at all levels.
- Waterproofing of the ground level slab continues.
- Waterproofing of Bus Deck started this period.
- Stair installation continues (Six of twenty-four stairs complete).
- Awning, metal panel and curtain wall installation continues.



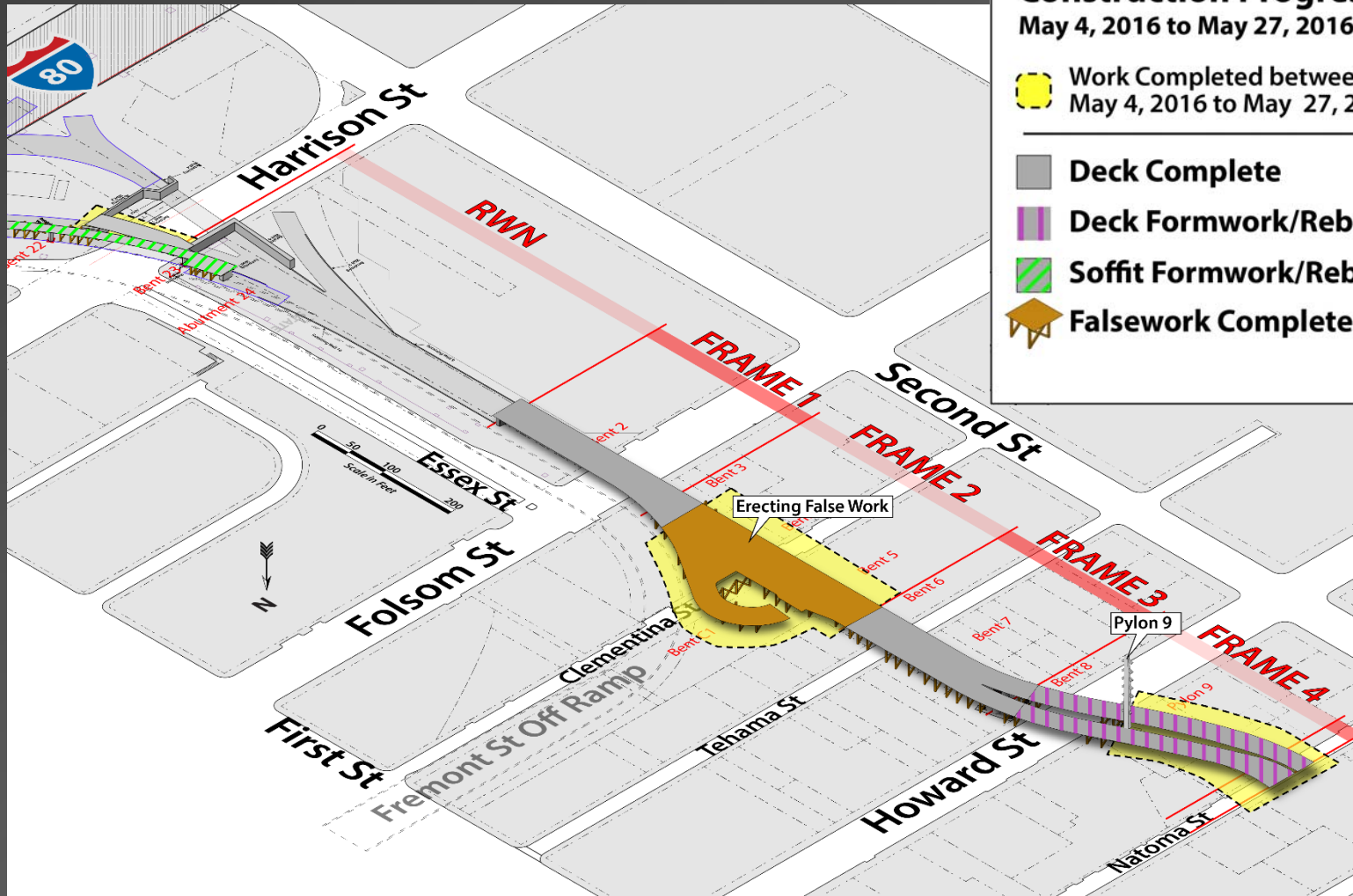


Eastern Zone (GL 20-35)

- Structural steel welding and bolting punchlist was completed.
- Spray Applied Fireproofing work continues.
- Bus Deck crash rail rebar and concrete continues.
- Concrete pours for the eyebrows and decks on all levels continues.
- MEPF sleeves and hangers embedded in concrete decks continues.
- Welding of wall system supports started this period in eastern zone.



Bus Ramp and Cable Stay Bridge



Transit Center Bus Ramp Construction Progress May 4, 2016 to May 27, 2016

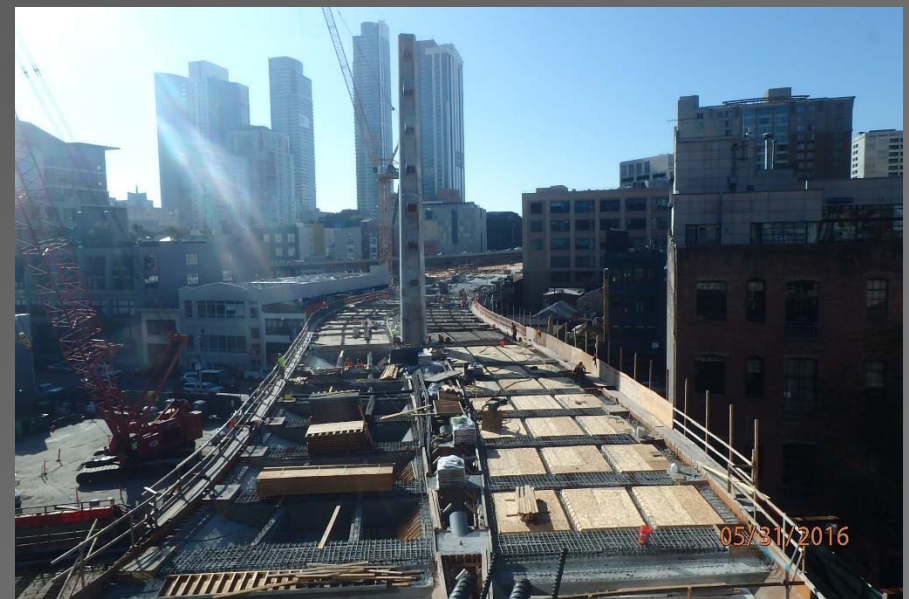
- Work Completed between May 4, 2016 to May 27, 2016

- Deck Complete
- Deck Formwork/Rebar in Progress
- Soffit Formwork/Rebar in Progress
- Falsework Complete



Bus Ramp Bridge

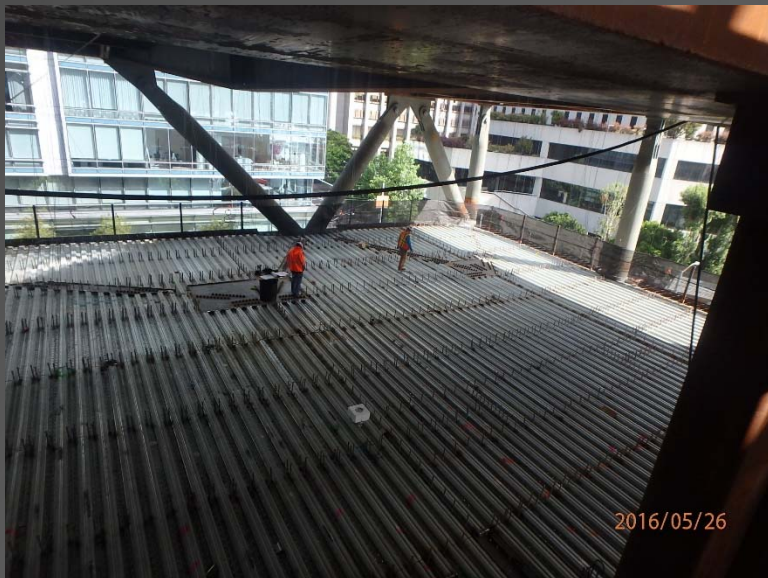
- Harrison Street “Right Bridge” falsework was removed.
- Underground utilities work at Caltrans substation continues.
- Abutment, Mechanically Stabilized Earth (MSE) wall and retaining wall work continues.
- Frame 4 Stem and Soffit concrete placement was completed May 12th.
- Falsework erection near Clementina St. including the bus turnaround continues.





Central Zone

- Continue the awning, metal panel and curtain wall installations.
- Continue with MEPF overhead.
- Continue Bus Deck level waterproofing.
- Electrical room buildout will continue.
- Removal of First Street temporary traffic bridge will begin in July.



Eastern Zone

- Continue rebar placement and concrete deck pours for all levels.
- Continue Bus Deck crash rail, rebar, formwork and concrete.
- Rooftop concrete decks and walls to continue.



Western Zone

- Continue spray-applied fireproofing.
- Continue MEPF overhead rough-in.
- Continue electrical room wall rebar, concrete waterproofing and buildout.
- Continue offsite utility vaults and ductbank.



Bus Ramp and Bridge

- Start fabrication of Frame 5 drop-in span.
- Pour Cable Stay Bridge deck Frame 4 concrete (Howard Street).
- Complete falsework over Clementina and Harrison Streets.
- Continue underground utilities at Caltrans substation area.



Recordable & Lost Time Incidents:

Recordable Incidents in May time period:	0	Lost Time Incidents in May time period:	0
Total Recordable Incidents in 2016:	4	Total Lost Time Incidents in 2016:	0

WOJV Average Annual Recordable Incident Rate 2011 Through 2015	4.35	WOJV Average Annual Lost Time Incident Rate 2011 Through 2015:	0.75
---	-------------	---	-------------

Nat'l./ State Annual Average Recordable Incident Rate 2011 Through 2015:	3.43	Nat'l./ State Annual Average Lost Time Incident Rate 2011 Through 2015:	1.85
---	-------------	--	-------------

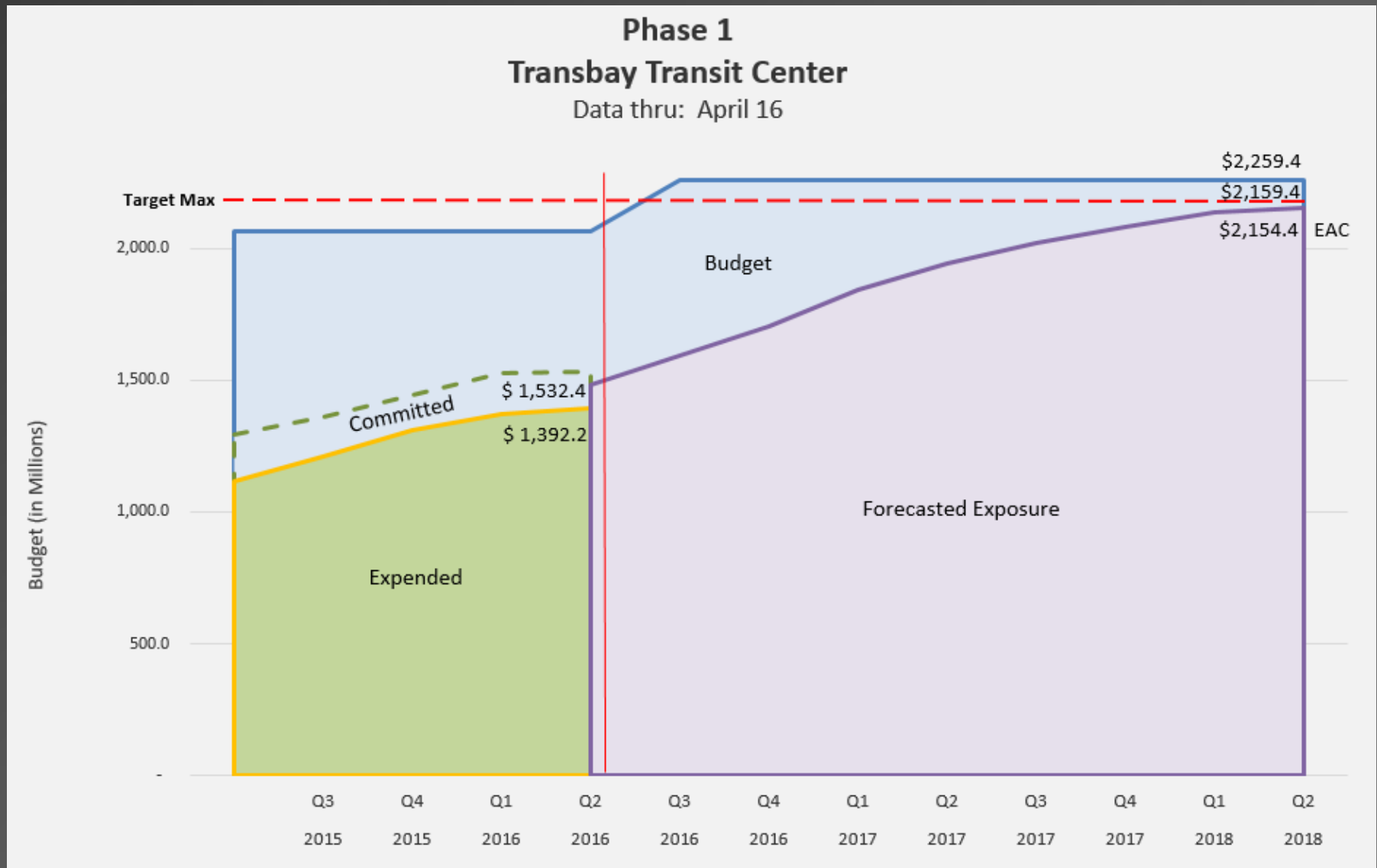
Craft Hours:

Total Transit Center Craft Hours through May 2016:	Increase since last update:	Total 2016 Craft Hours:
2,307,532	67,716	381,205



Transbay Transit Center

Budget Overview



67% Program Budget
77% Contract Time



Contingency Tracking (\$millions)

	Construction Contingency	CM/GC Contingency	Program Reserve	Total Contingency & Reserve
Baseline Budget Amounts (Nov 2015)	\$59.5	\$30.7	\$5.0	\$95.1
Contingency Usage Through Apr 2016	(\$19.0)	(\$0.2)	(\$1.1)	(\$20.3)
Remaining Baseline Budget Amounts (Apr 2016)	\$40.5	\$30.5	\$3.9	\$74.9
Total Draws/Adds May 2016	(\$2.6)	(\$0.1)	\$0.0	(\$2.7)
Remaining Balances	\$37.9	\$30.4	\$3.9	\$72.2

Uses of Contingency this period

- Steel Plate Protection and Popouts
- Miscellaneous Superstructure, Elevator, and other minor Change Orders to various Trade Packages.

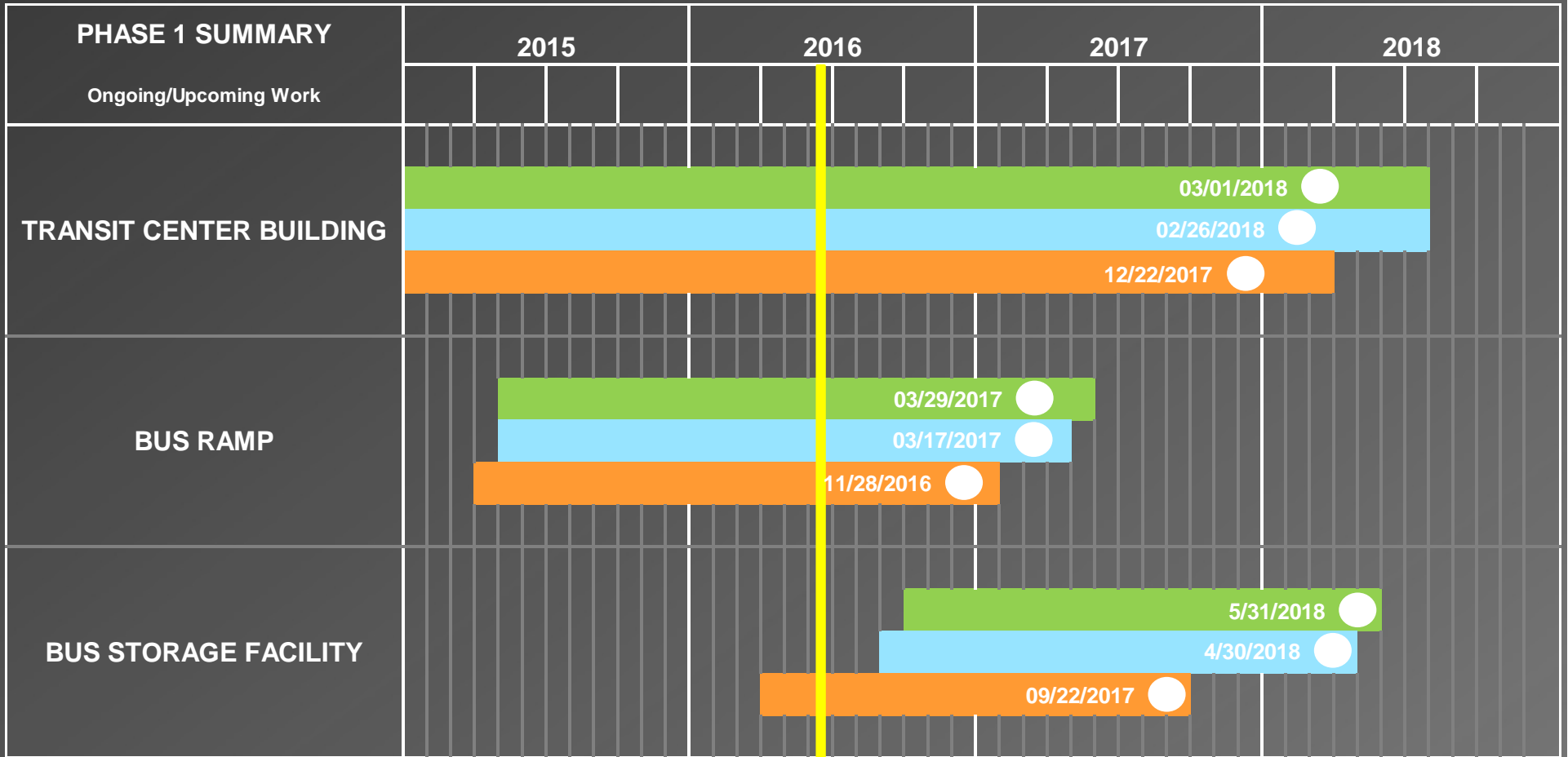
Forecasted Contingency Use

- CM/GC: \$0.1
- Construction: \$0.5
- Program Reserve: \$0



Transbay Transit Center

Schedule



LEGEND

- Current Forecast
- Previous Report
- Baseline
- Substantial Completion



Schedule

Contractor forecast shows no overall change since last report.

Mitigation Update

1. Strategic overtime work continues with focus on concrete and window wall systems.
2. CM/GC schedule forecasting refinement continues.
3. Improvement in CM/GC schedule monthly updates needed in respect to timely and complete mitigation of lost time.

Buy America

Compliance efforts.

Mitigation Update

1. Significant Items Remaining:
 - Building Management Control System (BMCS)
 - Fire Management System (FMS)
 - Public Address System (PA)
 - Audio Visual Systems (A/V)
2. TJPA issued CM/GC / Fisk Electric Buy America Compliance Letters including concern about possible Subcontractor Listing issue.



Change Management

AC Transit request for Bus Deck Reconfiguration.

Mitigation Update

1. Received Cost Proposals from Design Team to complete Redesign and issue contract documents.
2. Requested PM/PC to compile total Project Cost Budget & Schedule for AC Transit Approval and Funding to move forward.
3. CM/GC continues to advance work as bought out so not to affect current work flow or schedule.
4. Rough Order of Magnitude Cost for Redesign / Rework \$950k (hard & soft costs).

Bid Package 1.5 Procurement

Procurement of Network Systems

Concern:

1. Procurement of Network Equipment has been bogged down with Buy America Concerns.
2. Installation of IT Systems critical for Operational Readiness.
3. Delayed IT Installation could delay Phase 1 due to converged network design with Building Systems.

Mitigation Strategy:

1. Study options to accelerate or modify procurement approach.
2. Requested FTA Buy America verification.

