

# Construction Update

April 2018



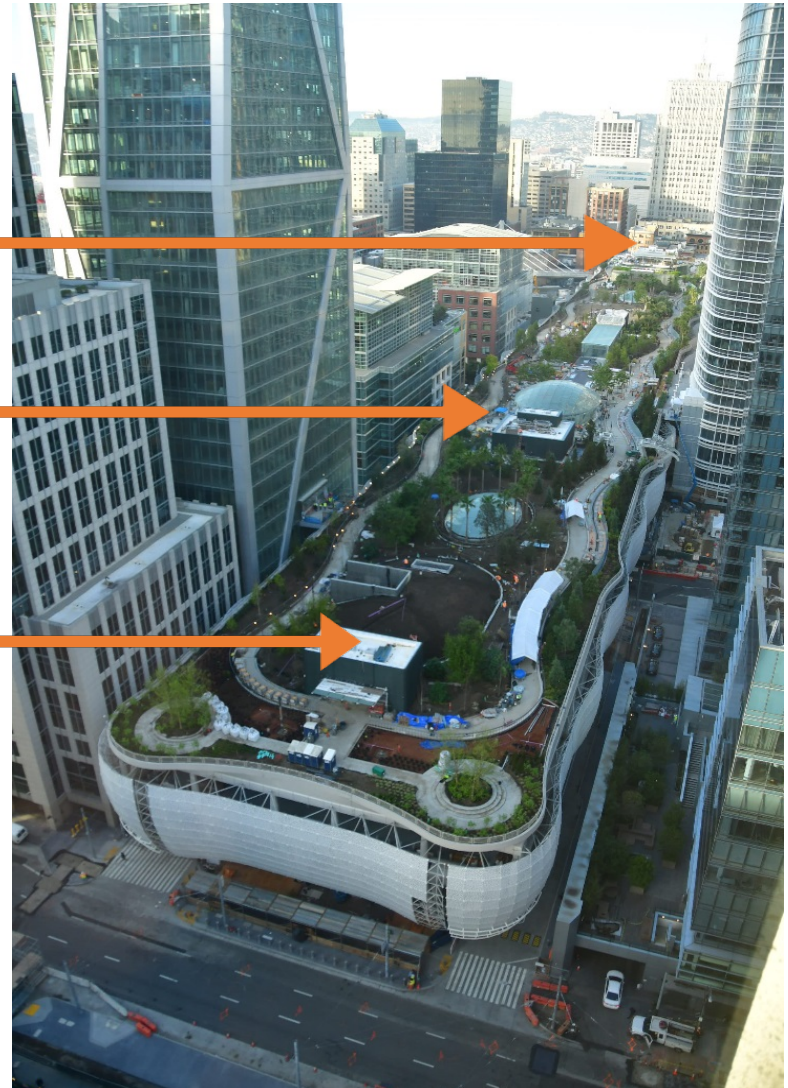
# Project Overview

---

**Western Zone Grid Line 1-10**

**Central Zone Grid Line 10-20**

**Eastern Zone Grid Line 20-35**

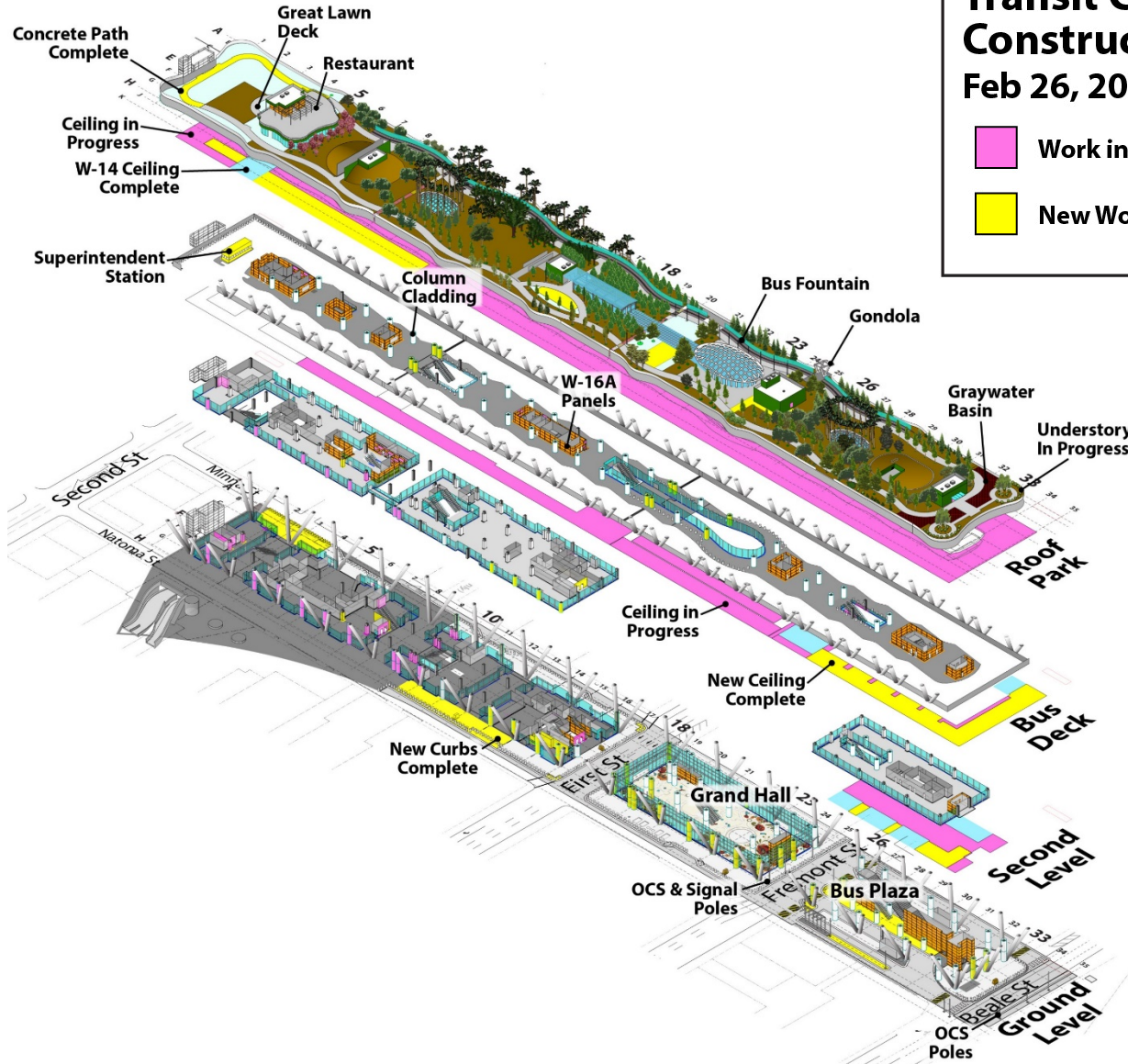




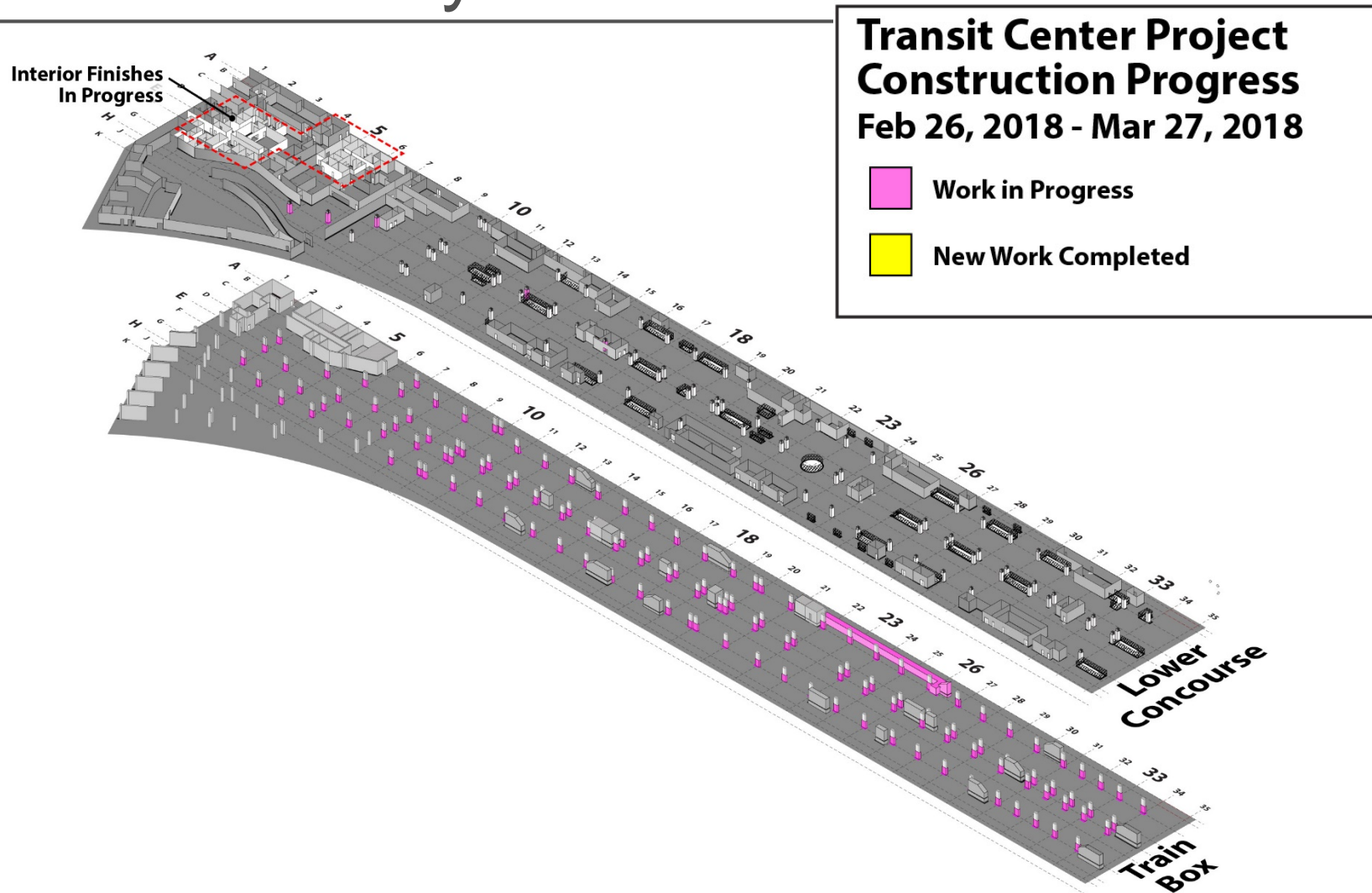
# Recent Activity

## Transit Center Project Construction Progress Feb 26, 2018 - Mar 27, 2018

- Work in Progress
- New Work Completed



# Recent Activity





# Construction Activity

## Transit Center – West End (GL1-20)

- Roof Amphitheatre construction underway.
- Rooftop landscaping plantings in progress.
- Rooftop escalator an/elevator landings concrete placement, connect to pathways.
- Bus Deck Drive aisle ceiling panels well underway, near completion.
- Bus Deck Passenger Island ceiling framing and fans in progress.
- Bus Deck AC Transit Superintendent Booth delivered and installation in progress.
- Elevators and Escalators final assembly and finishes underway.
- Ground Level sidewalks and roadway construction continues Minna and Natoma.
- Priority Equipment Rooms and Turnover Rooms have Punchlist work in progress.
- Electrical conduits and power cable distribution continues.
- Main Distribution (MDF) and Intermediate Distribution Frame (IDF) Rooms underway.
- Equipment rooms buildout in progress.

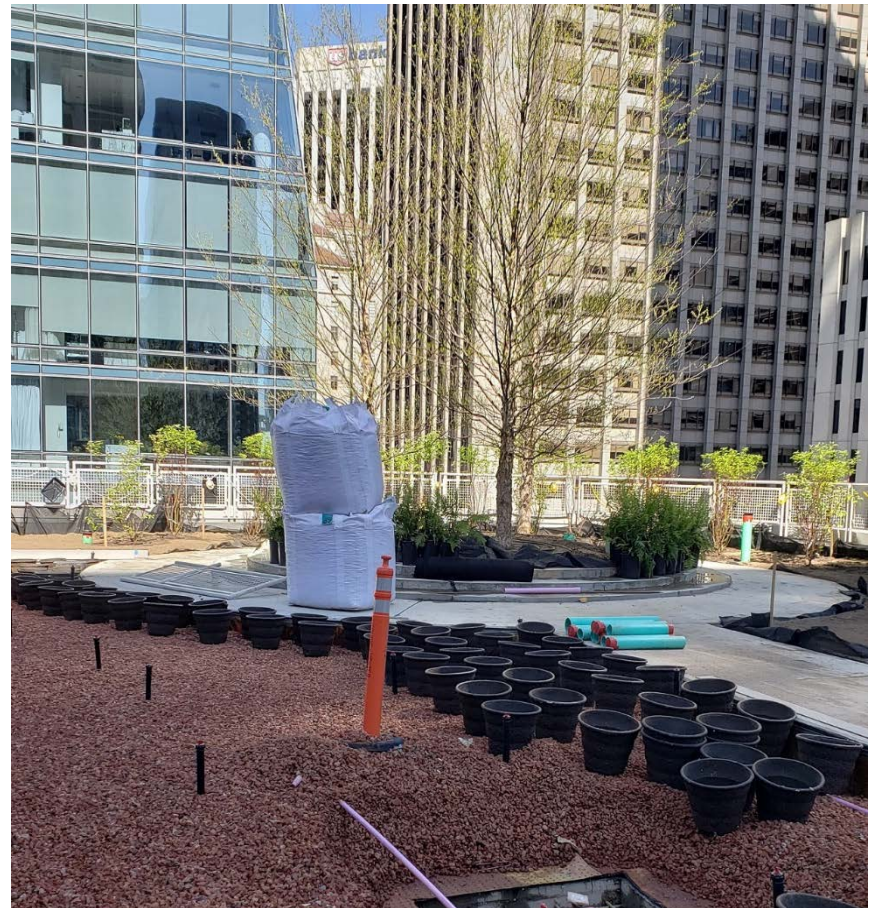
## Transit Center – East End (GL20-35)

- Rooftop landscaping near completion.
- Gondola assembly and landings underway.
- Rooftop hardscaping around the Oculus and Glass Floor are underway.
- Bus Deck, Grand Hall and Bus Plaza overhead Mechanical and Electrical in progress, nearing completion.
- Bus Deck column covers in progress.
- Bus Deck Passenger Island ceiling framing and fans in progress.
- Bus Deck, Grand Hall and MUNI Bus Plaza Metal wall panels in progress.
- Elevators and Escalators final assembly and finishes underway.
- MUNI Bus Plaza drive aisle and pedestrian islands construction in progress.
- Electrical conduits and power cable distribution continues.
- Main Distribution (MDF) and Intermediate Distribution Frame (IDF) Rooms underway.
- Equipment rooms buildout in progress.

# Rooftop Park –Landscaping and Railing

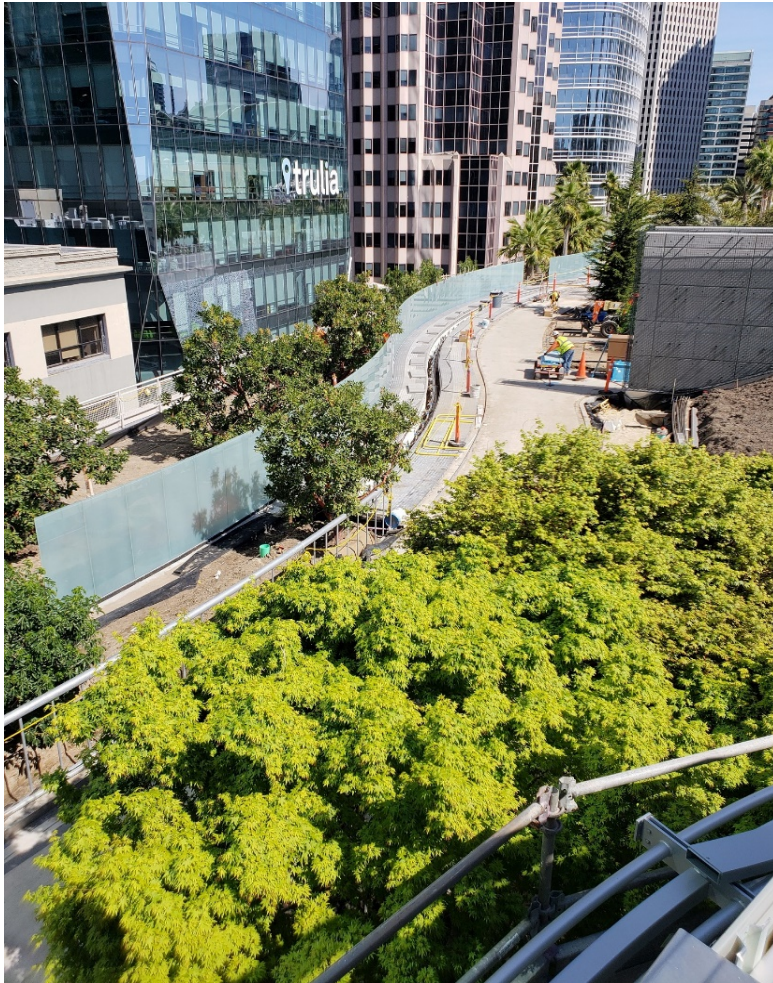


Wetlands Garden area nearing completion





# Rooftop Park –Landscaping



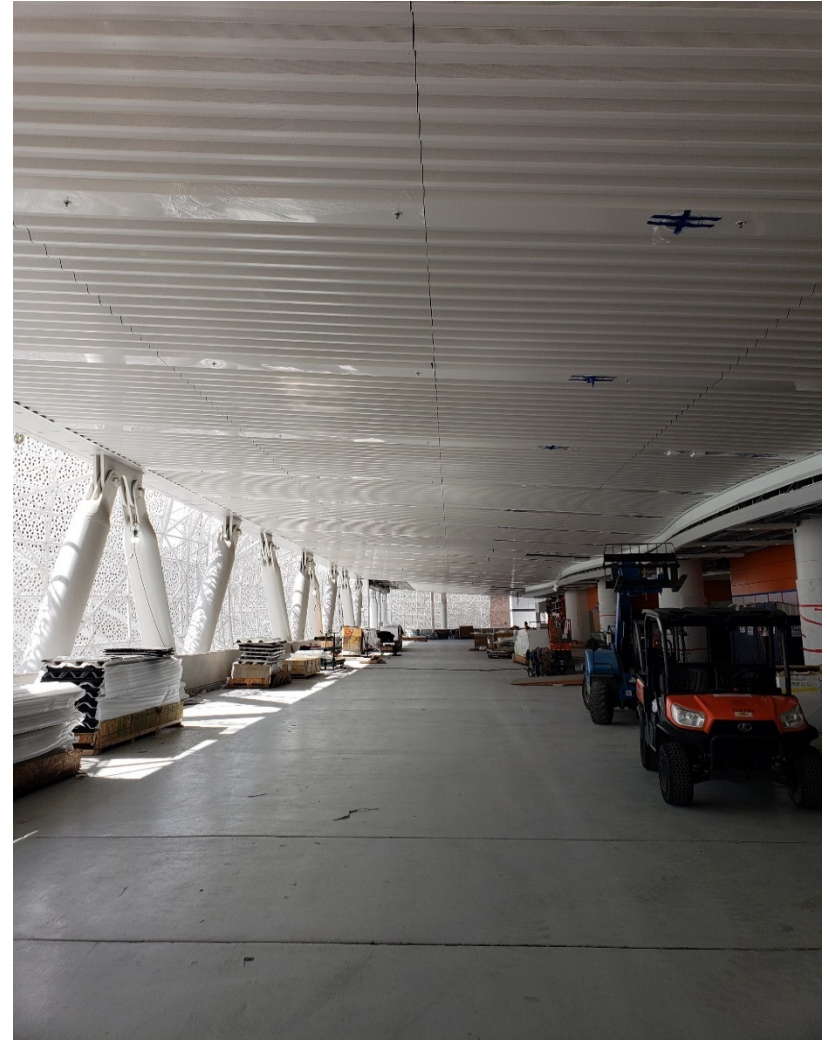


# Bus Deck – Passenger Island ceiling, signage, fan light and wall panels





# Bus Deck - Drive Aisle ceiling and Stair 201 wall panels



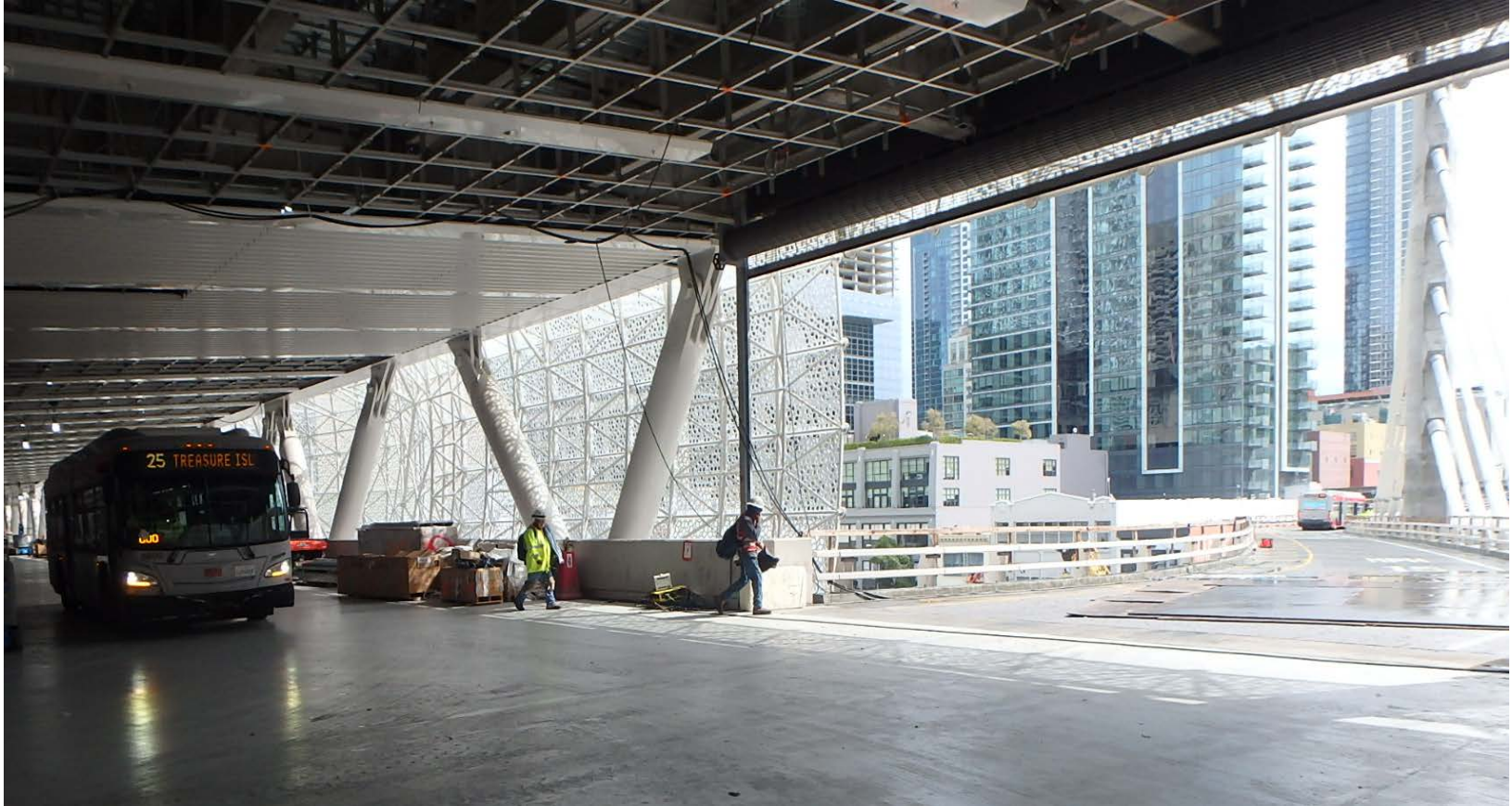
# Bus Deck – AC Transit Superintendent's Booth



Installation is ongoing through May 1st



# Bus Deck – Final bus testing



AC Transit & MUNI (Treasure Island) final Bus Testing included ADA ramp deployment.

# Grand Hall - Glass Floor





# Muni Bus Plaza – Bus Shelters in progress



Muni Bus Plaza – south side progress

# Muni Bus Plaza - Metal wall panels





# System Start-Up and Testing



# Construction Progress – Room Finishes





# Tenant Improvement Construction planning

---

Webcor Priority Room turnover to Lincoln Properties:

- Transit Center Mail Room #1380- Ground level.
- Greyhound Package Area Room #1221- Ground level.
- Greyhound [Amtrak] Passenger Waiting Area Room# 02220 – Level 2.
- Greyhound Passenger Service Room #3228 – Bus Deck level.
- Office Space - TJPA Offices Room # 02620- Level 2.

Lincoln Properties Room Buildout – Design Build:

- Architect is coordinating with Contractors for Design Build of HVAC and room buildout. MEP and architectural drawings.
- Turner Special Projects has submitted drawings for building Permits with CCSF.
- Room Turnover Work completion list and Punchlist coordination between Turner SPD and Webcor-Obayashi and Architects in progress.

# Bus Storage Facility

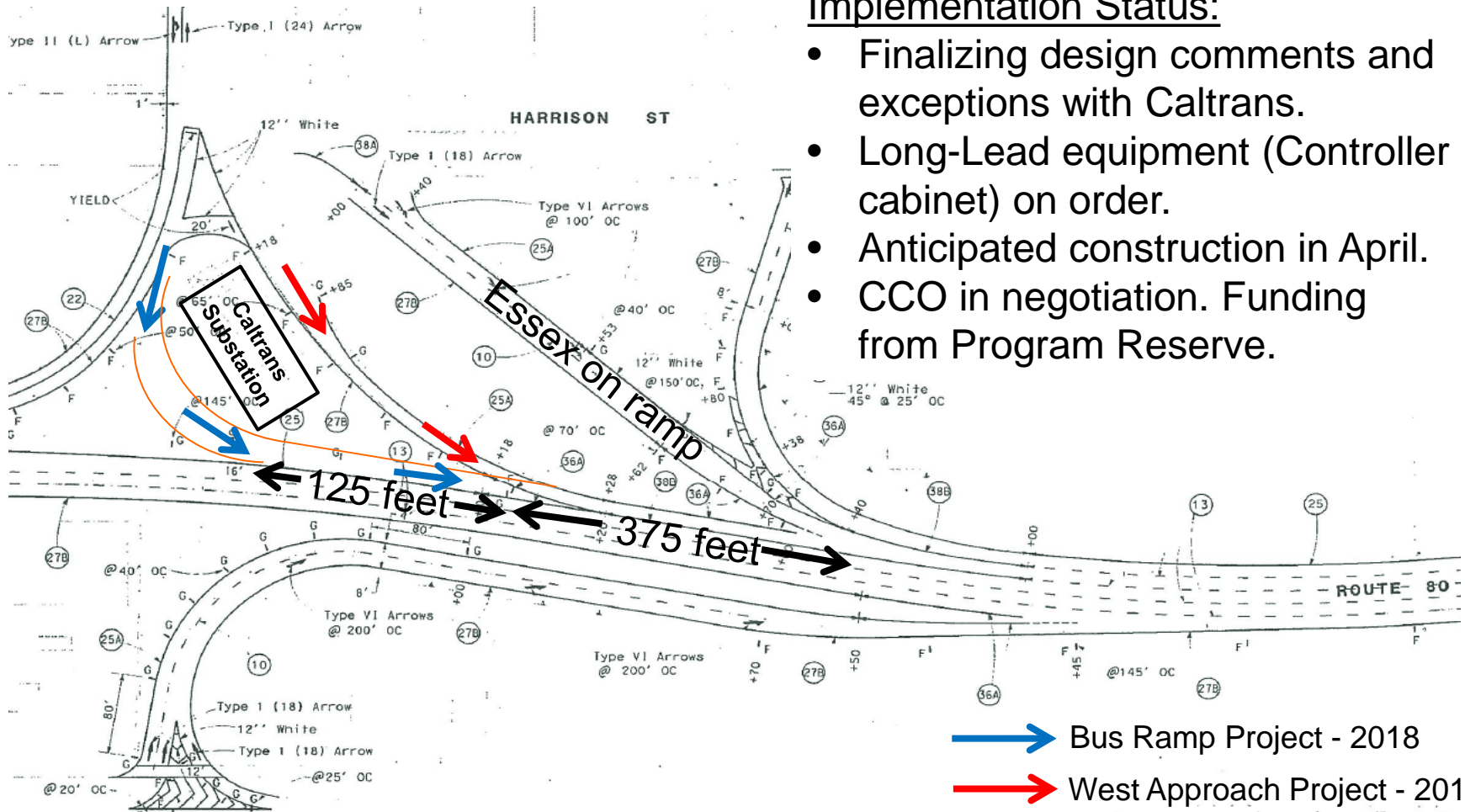


## Current Work Activities

- Sound wall work continues
- Modular Building delivery on May 1
- MSE wall work complete
- Concrete Pavement started



# Bus On-Ramp Merge



## Implementation Status:

- Finalizing design comments and exceptions with Caltrans.
- Long-Lead equipment (Controller cabinet) on order.
- Anticipated construction in April.
- CCO in negotiation. Funding from Program Reserve.

## Eastbound Bay Bridge Approach

# Safety and Labor Statistics

## Recordable & Lost Time Incidents:

<b>WOJV Recordable Incidents this period March 2018:</b>	<b>1</b>	<b>WOJV Lost Time Incidents this period March 2018:</b>	<b>0</b>
Total Recordable Incidents -Year 2018	1	Total Lost Time Incidents - Year 2018	0

<b>WOJV Average Annual Recordable Incident Rate 2011 Through 2016</b>	<b>2.99</b>	<b>WOJV Average Annual Lost Time Incident Rate 2011 Through 2016:</b>	<b>0.33</b>
Nat'l/ State Annual Average Recordable Incident Rate- Public Works 2011 Through 2016:	2.90	Nat'l/ State Annual Average Lost Time Incident Rate 2011 Through 2016:	1.36

## Craft Hours:

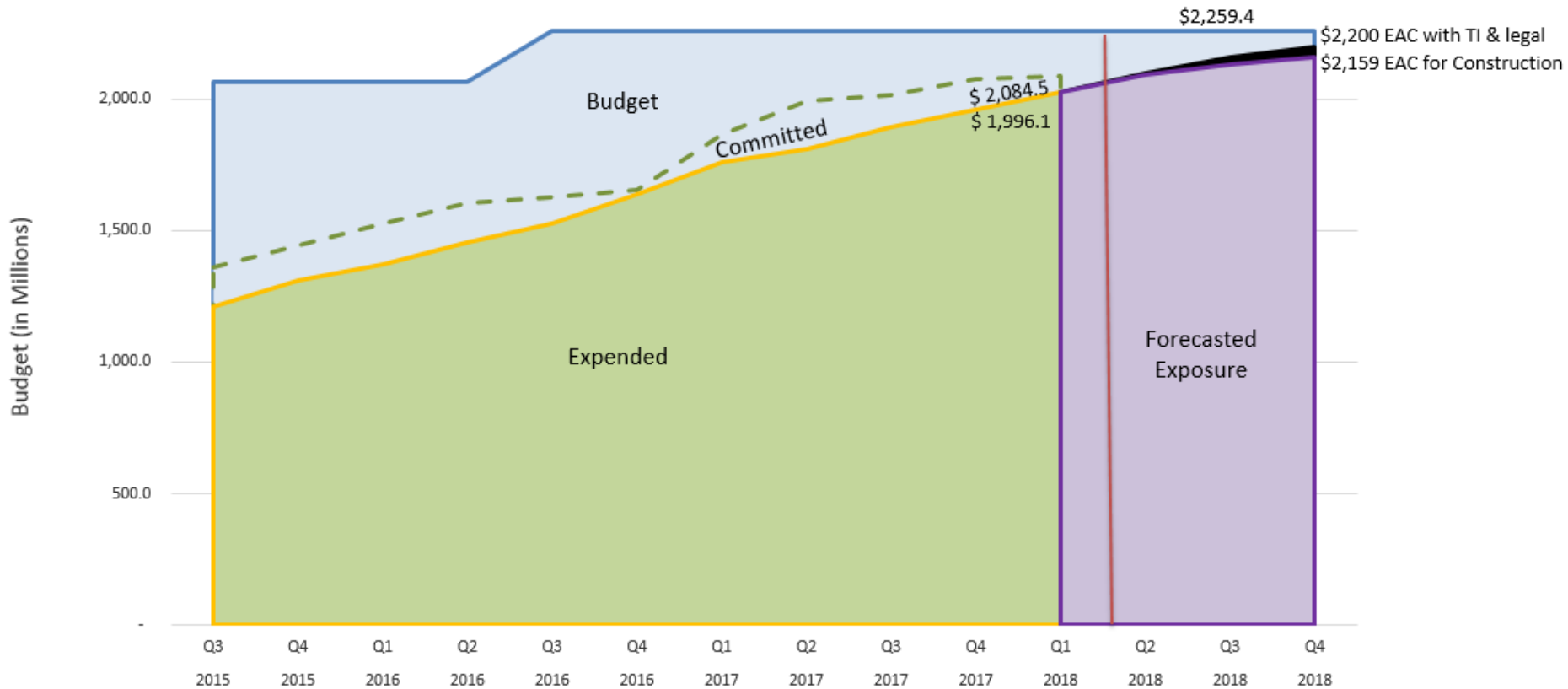
<b>Total Transit Center Craft Hours 2011 - YTD 2018 :</b>	<b>Total Craft Hours <u>March 2018:</u></b>	<b>Total Transit Center Craft Hours YTD 2018 :</b>
<b>4,856,510</b>	<b>108,563</b>	<b>372,000</b>



# Budget

## Phase 1 - Transbay Program

Data thru: February '18



88% Program Budget  
103% Contract Time

# Contingency Cost

## Contingency Tracking (\$millions)

	Construction Contingency	CM/GC Contingency	Program Reserve	Total Contingency & Reserve
<b>Baseline Budget Amounts</b>	<b>\$61.8</b>	<b>\$32.5</b>	<b>\$117.0</b>	<b>\$211.3</b>
<b>Contingency Usage Through Feb 2018</b>	(\$45.6)	(\$5.5)	(\$26.2)	(\$77.3)
<b>Remaining Baseline Budget Amounts (at Feb 2018)</b>	<b>\$16.2</b>	<b>\$27.0</b>	<b>\$90.8</b>	<b>\$134.0</b>
<b>Total Draws/Adds March 2018</b>	(\$2.0)	(\$5.8)	(\$0.0)	(\$7.8)
<b>Remaining Balances</b>	<b>\$14.2</b>	<b>\$21.2</b>	<b>\$90.8*</b>	<b>\$126.2</b>

### Uses of Contingency this period

Additional costs for temporary facilities, OCS fiberglass support system, Beale Street traction power, consolidation of Skanska costs, civil scope transfer from TG12.1 to TG07.6, added protection at grand hall due to schedule recovery and additional import/export for bus ramp structural backfill.

### Forecasted Contingency Use

CM/GC: \$0.3M

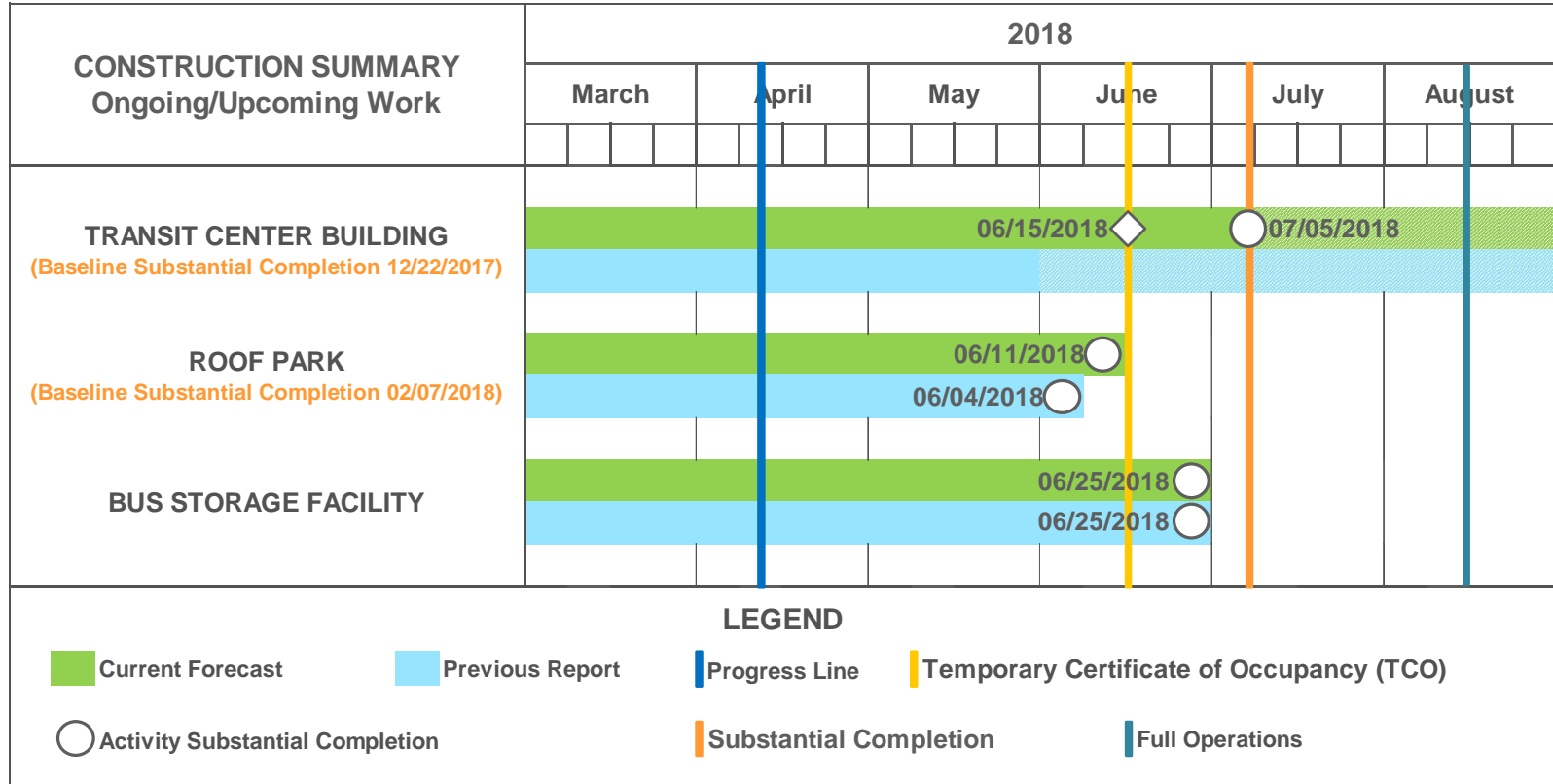
Construction: \$2.5M

Program Reserve: \$0.0

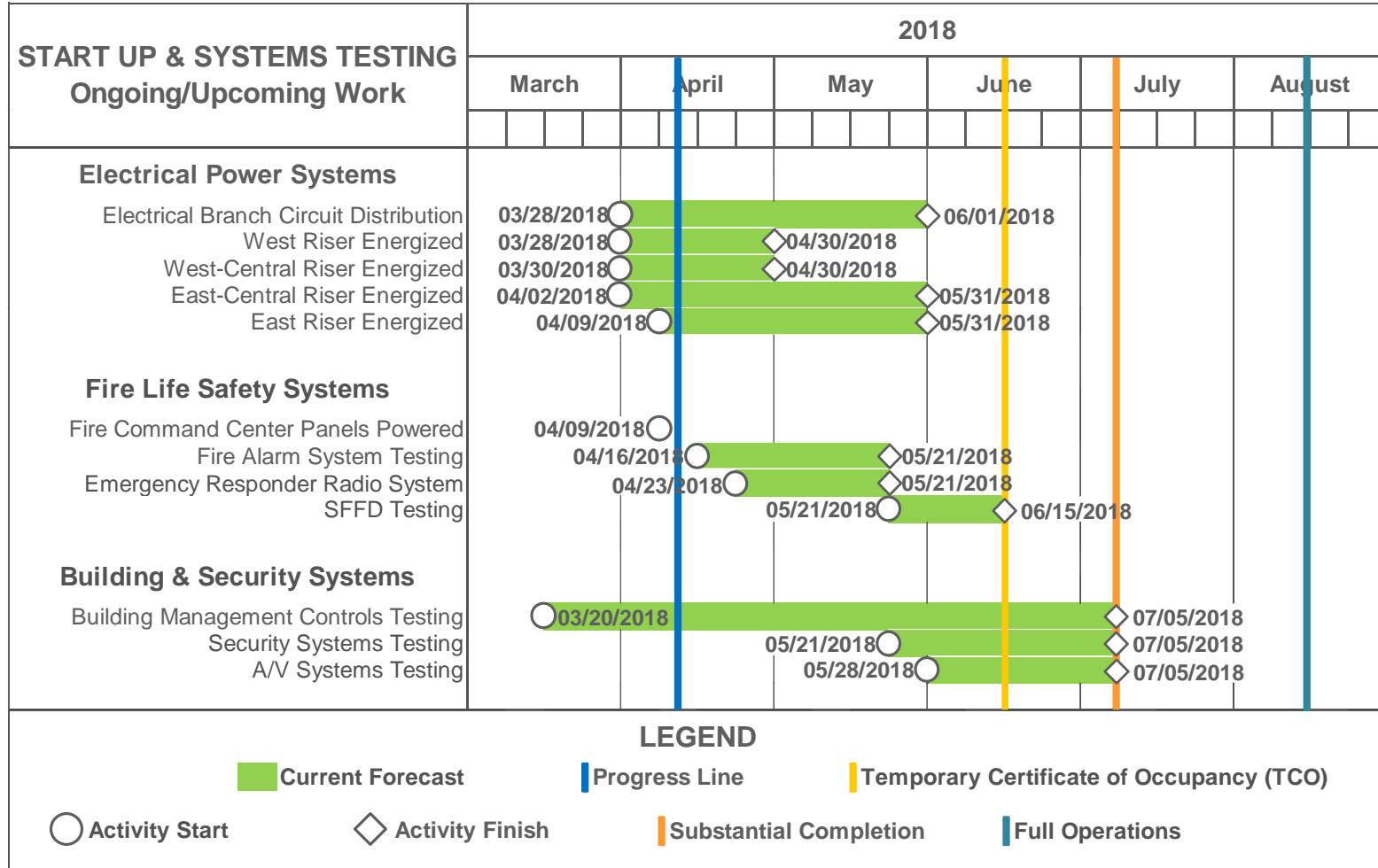
\*Note: Program Reserve balance of \$90.8 million assumed to include contingencies earmarked for tenant improvements and legal costs related to 301 Mission St.



# Schedule



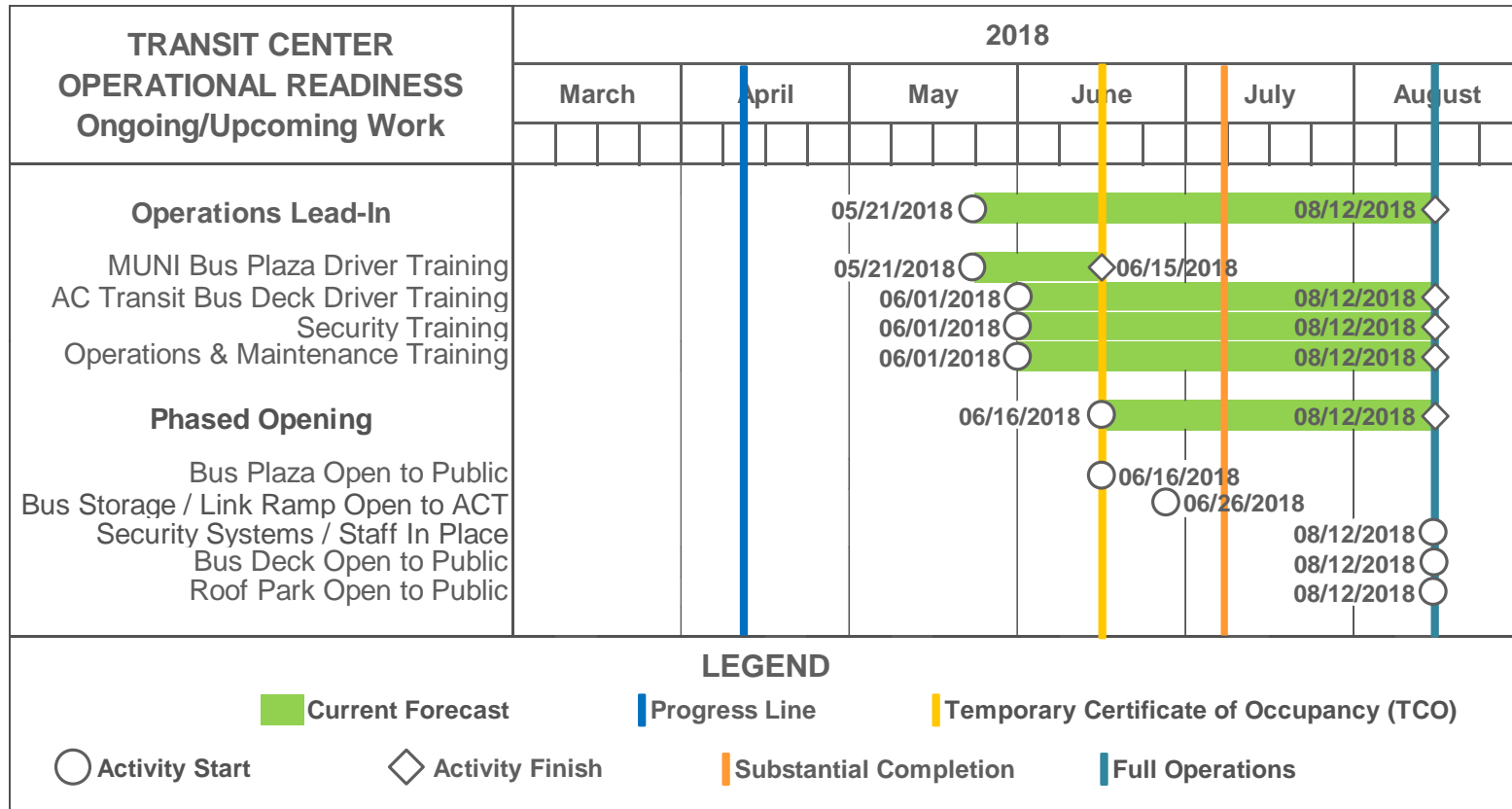
# Schedule



TIME BETWEEN TCO & SUBSTANTIAL COMPLETION IS INSPECTIONS/CORRECTIONS.



# Schedule



TIME BETWEEN TCO & SUBSTANTIAL COMPLETION IS INSPECTIONS/CORRECTIONS.

# AC Transit- Bus Deck Readiness

---

- AC Transit has identified requirements regarding a Go/No Go decision for bus operations starting August 12<sup>th</sup>.
- They have multiple parameters that they are requesting confirmation correspondence by April 27<sup>th</sup>.
- Executive walkthrough scheduled for April 23<sup>rd</sup>.
- Confirmation received on Interim Fire, Life Safety measures acceptable to AC Transit Safety Department.



# Schedule Risk

---

## Mitigation Status

- 1) Real-Time Issue Resolution Ongoing. (PLT, OAC/Risk, Construction Issues meetings weekly to address any outstanding issues)
- 2) Electrical Related Scope of Work continues to drive Schedule.
  - Experiencing Better Milestone Achievement.
  - Significant Increase of Electrical Personnel & Activity.
  - Rapid Supplementation of Forces at First Sign of Faltering Subcontractors.
- 3) Other Trade Contractors Performance Improved.
  - Achieving Milestones for Transition to Tenant Improvement Activity.
  - Site Improvement Completion supports Targeted Milestones.

# Schedule Risk

---

## WOJV Electrical & Systems Schedule Refresh Update:

- Applicable Trades working 10 Hr. shifts 6 days/week + Sunday where needed.
- Current Schedule Activities Support 6/15/2018 TCO.
- State of Completion Assessment Completed.
- Approx. 420 Electricians on Site advancing both Normal Power and Low Voltage Building Systems.
- Start up Activities tracking including recent SFFD Fuel Oil Systems Acceptance.
- Installing Network Equipment with 98% Backbone Completed.





# Questions?

**TJPA**  
TRANSBAY JOINT POWERS AUTHORITY

201 Mission Street, Suite 2100 San Francisco, CA 94105 • 415.597.4620 • [www.tjpa.org](http://www.tjpa.org)