

# Construction Update

March 2018



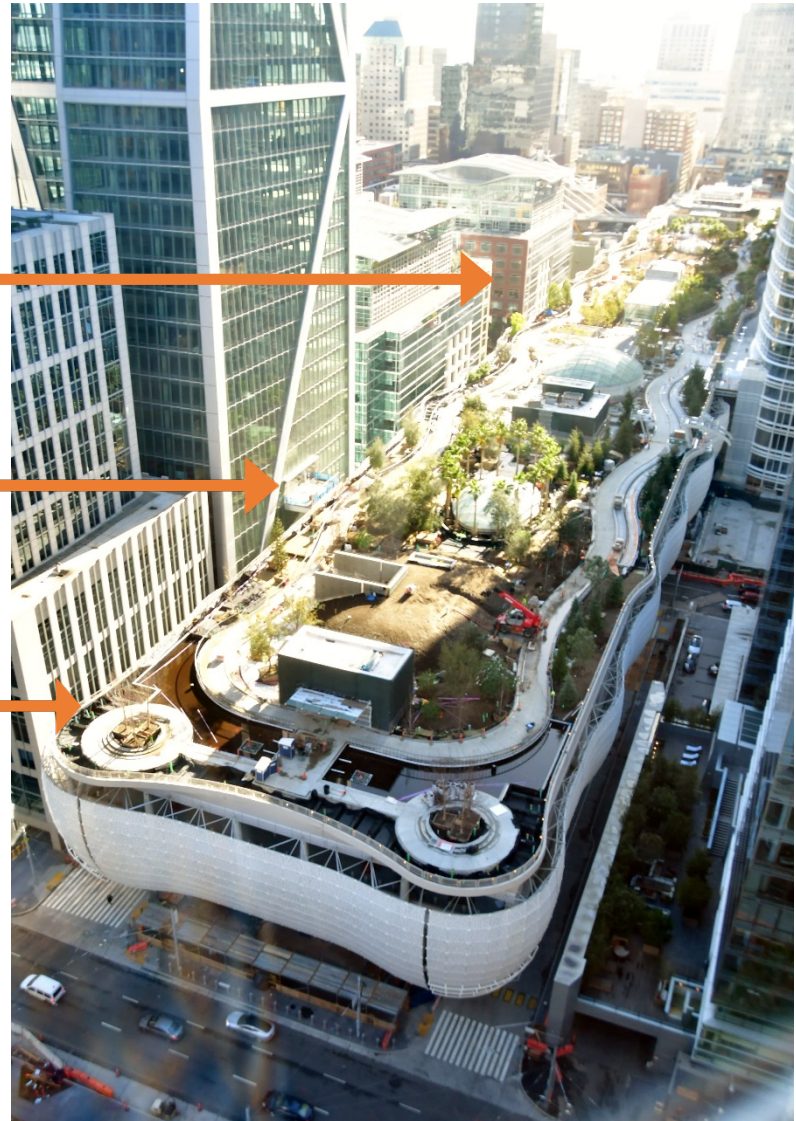
# Project Overview

---

**Western Zone Grid Line 1-10**

**Central Zone Grid Line 10-20**

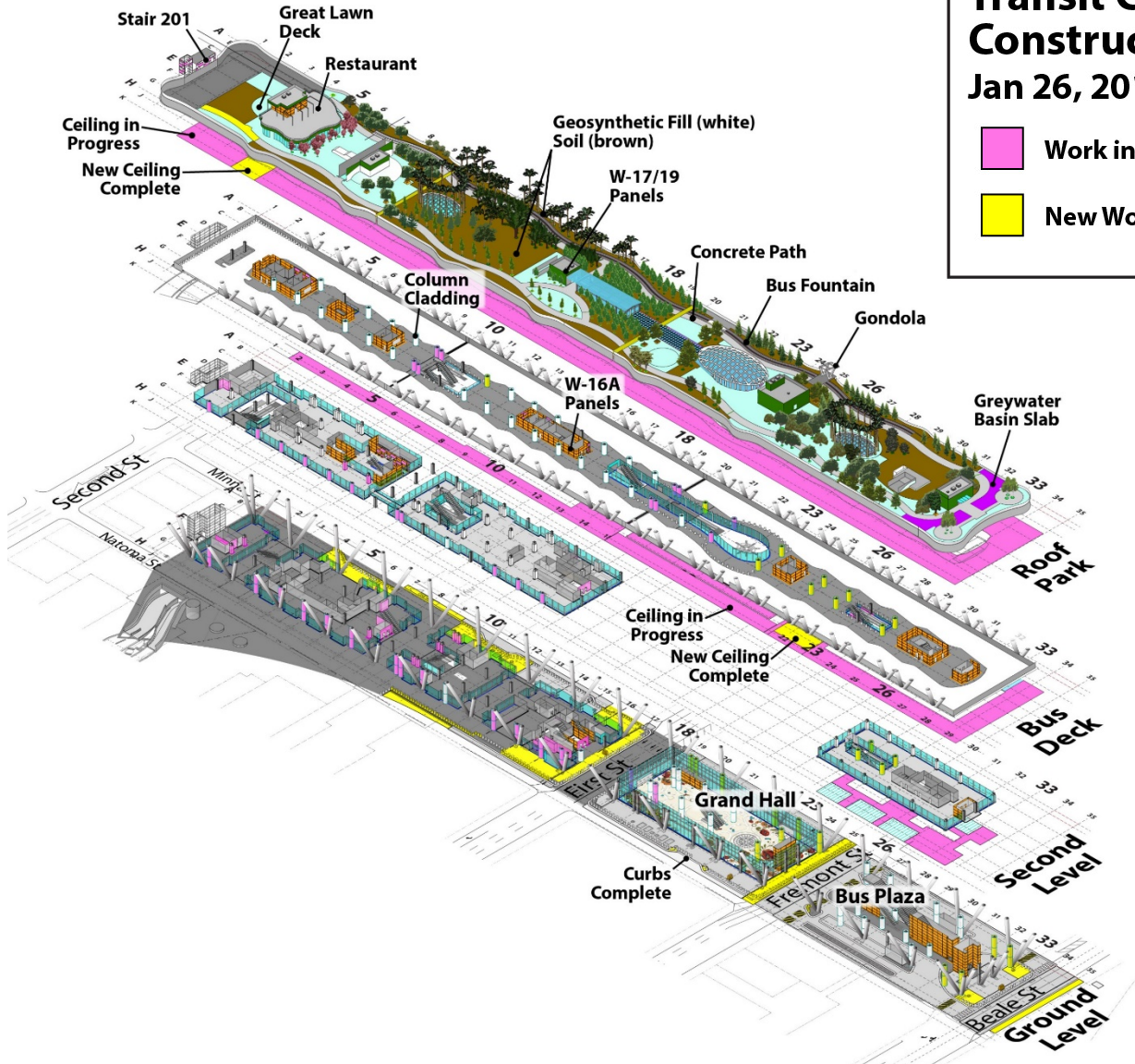
**Eastern Zone Grid Line 20-35**



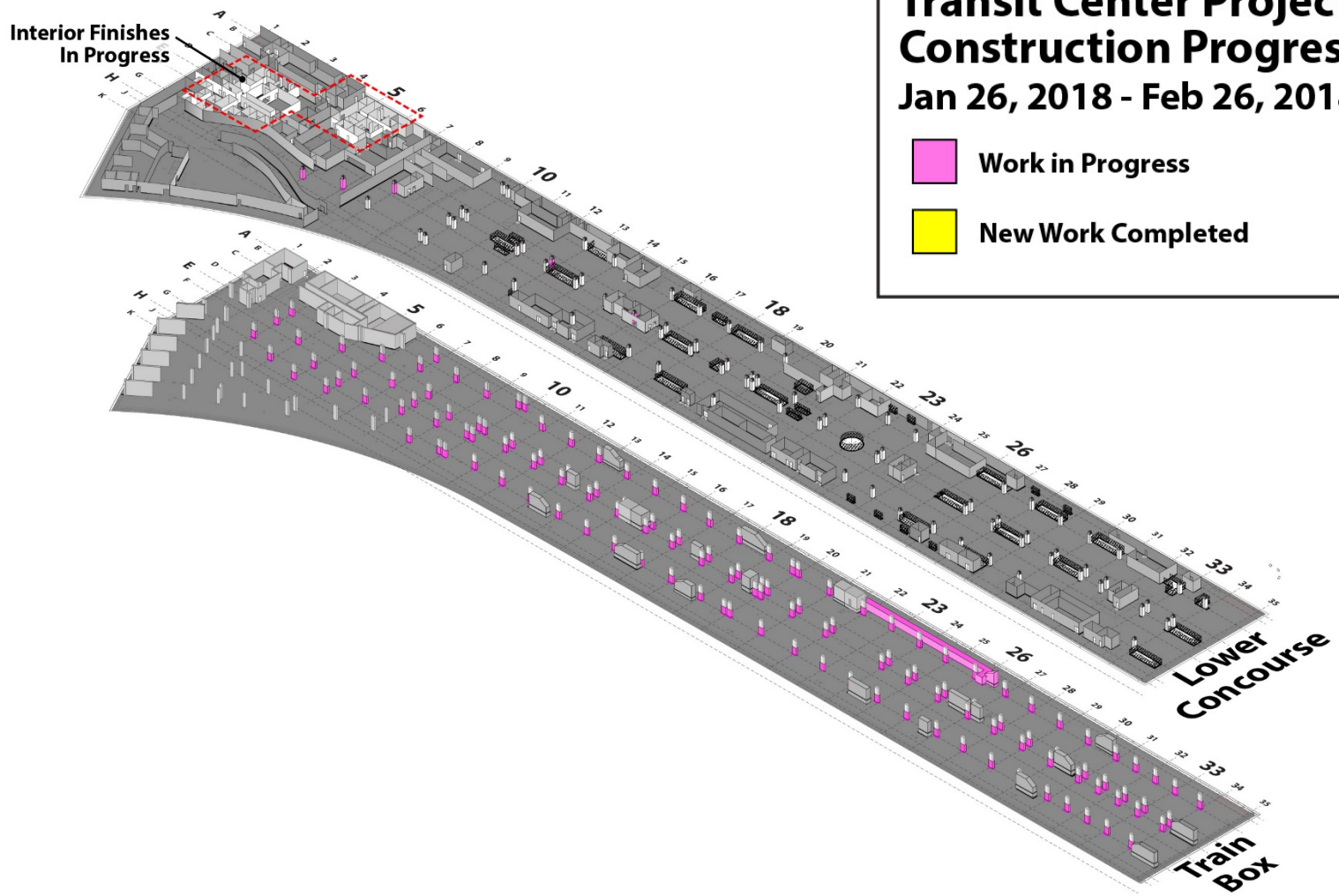
# Recent Activity

## Transit Center Project Construction Progress Jan 26, 2018 - Feb 26, 2018

- Work in Progress
- New Work Completed



# Recent Activity



# Construction Activity

## Transit Center – West End (GL1-20)

- Roof Amphitheatre construction underway.
- Rooftop landscaping small plants progress.
- Escalator canopy glass panels completed.
- Bus Deck Mechanical, Electrical, Plumbing near completion- including hydrotesting.
- Bus Deck column covers now complete.
- Bus Deck ceiling framing and fans in progress at passenger island.
- Bus Deck Metal wall panels now complete.
- Elevators and Escalators underway.
- Ground Level sidewalks and roadway construction of Minna and Natoma.
- Electrical conduits and power cable distribution continues.
- Main Distribution (MDF) and Intermediate Distribution Frame (IDF) Rooms underway.
- Equipment rooms buildout in progress.

## Transit Center – East End (GL20-35)

- Rooftop landscaping well underway.
- Rooftop wetlands basin ready for planting.
- Elevators and Escalators underway.
- Bus Deck Mechanical, Electrical, Plumbing near completion - including hydrotesting.
- Bus Deck column covers in progress.
- Bus Deck ceiling framing and fans in progress at passenger island.
- Bus Deck Metal wall panels in progress.
- Grand Hall sidewalks and roadway reconstruction of Natoma in progress.
- MUNI Bus Plaza drive aisle and pedestrian islands construction in progress.
- Electrical conduits and power cable distribution continues.
- Main Distribution (MDF) and Intermediate Distribution Frame (IDF) Rooms underway.
- Equipment rooms buildout in progress.

# Rooftop Park –Landscaping



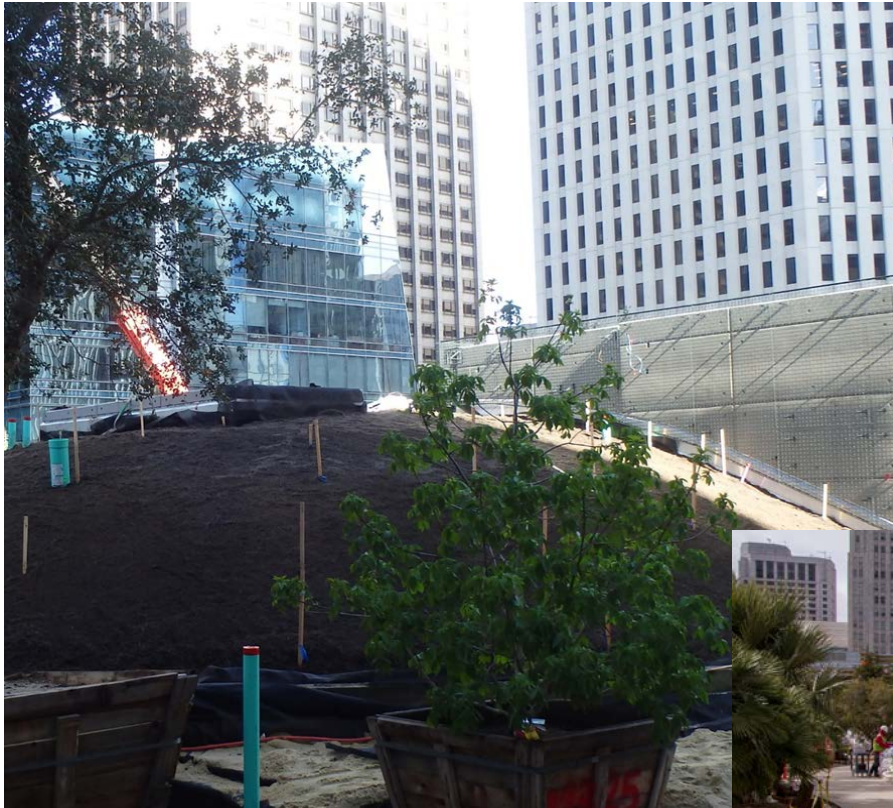
# Rooftop Park –Landscaping



Eastern Zone landscaping mound  
- before and after soils



# Rooftop Park –Landscaping



Rooftop landscaping mound

Bus Jet Fountain progress





# Bus Deck - Drive Aisle ceiling and wall panels installed – Western Zone



# Bus Deck – Operator testing ongoing



AC Transit Bus Testing – including deployment of ADA ramps.

# Construction progress – Central Zone

Natoma Street sidewalk, curb and gutter replacement- before and after.



# Overhead progress – Cross Streets

Metal ceiling panel install at Fremont street.



OCS Poles and Traffic Signal Poles:

- Mission Street is complete and rewiring in progress.
- Fremont, First, Beale and Howard Streets are 90% complete.



# Construction progress –Eastern Zone

Muni Bus Plaza – South side progress



Muni Bus Plaza and Fremont Street storm drain connections

# MUNI Bus Plaza – Operation



*Fulton #5 Operating from the Muni plaza since December 26<sup>th</sup>.*

# System Start-Up and Testing in progress



# Tenant Improvement Construction planning

---

Webcor Priority Room turnover to Lincoln Properties:

- Transit Center Mail Room #1380- Ground level.
- Greyhound Package Area Room #1221- Ground level.
- Greyhound [Amtrak] Passenger Waiting Area Room# 02220 – Level 2.
- Greyhound Passenger Service Room #3228 – Bus Deck level.
- Office Space - TJPA Offices Room # 02620- Level 2.

Lincoln Properties Room Buildout – Design Build:

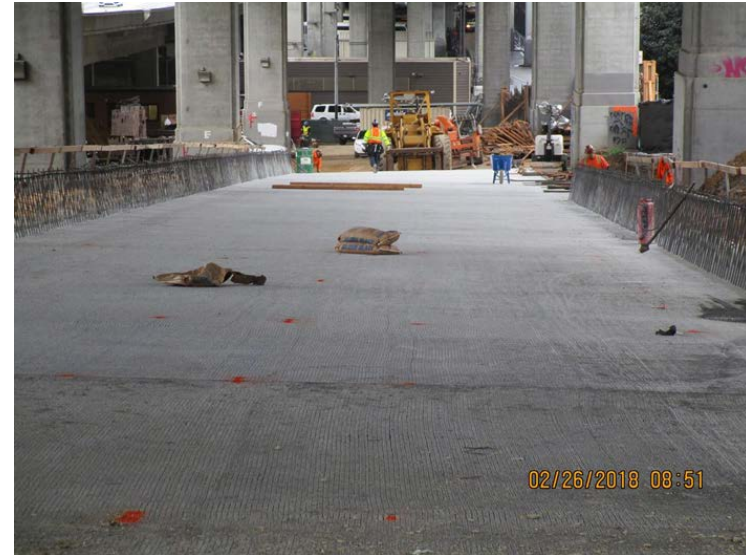
- Architect is coordinating with Contractors for Design Build of HVAC and room buildout. MEP and architectural drawings to come.
- Room Turnover Work completion list and Punchlist coordination between Turner SPD and Webcor-Obayashi and Architects in progress.
- Outreach to SF Building Trades Council per PLA Project Labor Agreement completed.



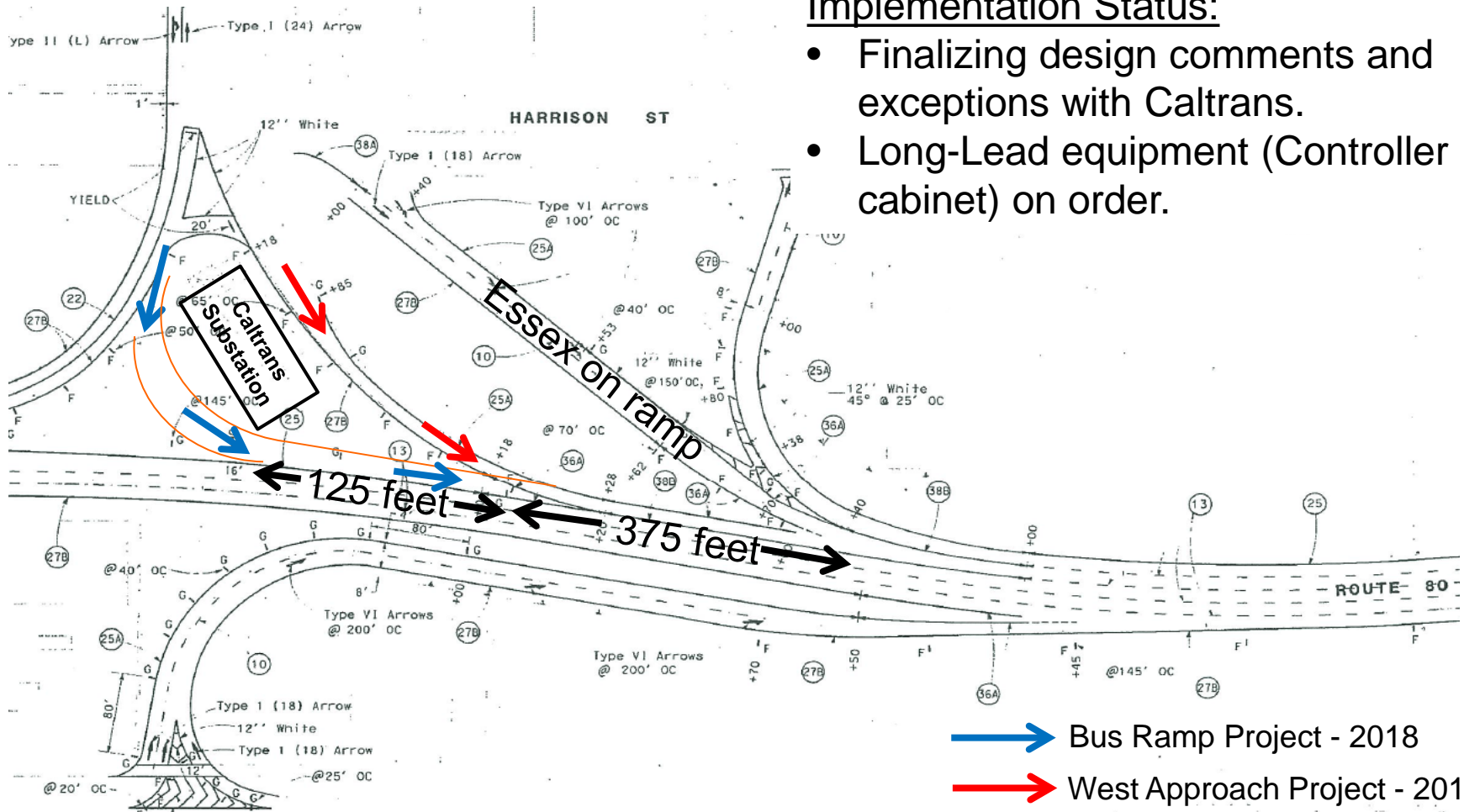
# Bus Storage Facility

## Construction Progress

- Sound wall (noise attenuation) construction continues.
- Retaining Wall Rebar & concrete ongoing – 90% complete.
- MSE Mechanically Stabilized Earth walls in progress.
- Modular AC Transit Administration Building is under fabrication.



# Bus On-Ramp Merge



## Implementation Status:

- Finalizing design comments and exceptions with Caltrans.
- Long-Lead equipment (Controller cabinet) on order.

## Eastbound Bay Bridge Approach

# Safety and Labor Statistics

## Recordable & Lost Time Incidents:

<b>WOJV Recordable Incidents this period February 2018:</b>	<b>0</b>	<b>WOJV Lost Time Incidents this period February 2018:</b>	<b>0</b>
Total Recordable Incidents -Year 2018	0	Total Lost Time Incidents - Year 2018	0

<b>WOJV Average Annual Recordable Incident Rate 2011 Through 2016</b>	<b>2.99</b>	<b>WOJV Average Annual Lost Time Incident Rate 2011 Through 2016:</b>	<b>0.33</b>
Nat'l/ State Annual Average Recordable Incident Rate- Public Works 2011 Through 2016:	2.90	Nat'l/ State Annual Average Lost Time Incident Rate 2011 Through 2016:	1.36

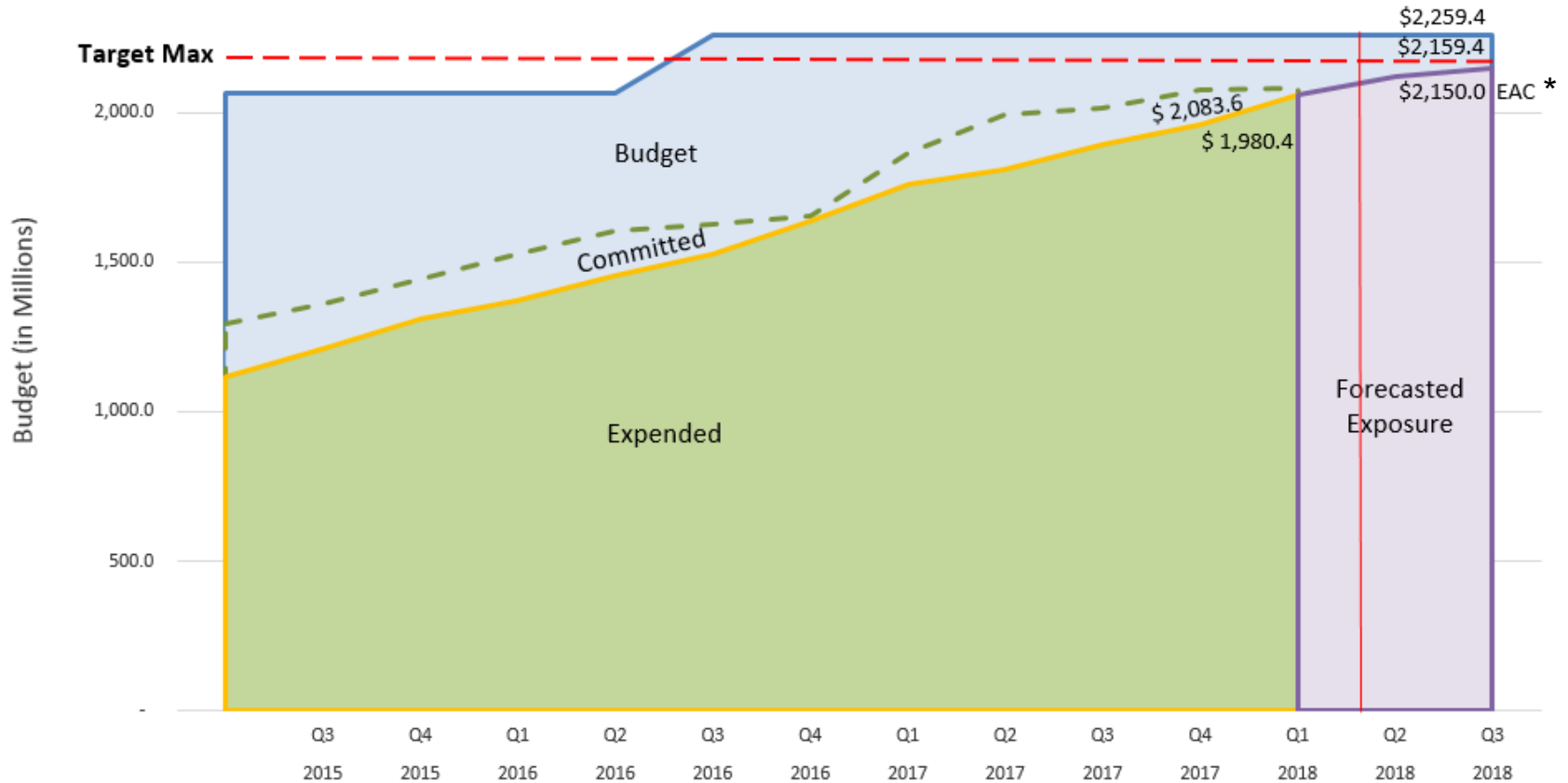
## Craft Hours:

<b>Total Transit Center Craft Hours 2011 - YTD 2018 :</b>	<b>Total Craft Hours <u>February 2018:</u></b>	<b>Total Transit Center Craft Hours YTD 2018 :</b>
<b>4,747,947</b>	<b>164,145</b>	<b>265,637</b>

# Budget

## Phase 1 - Transbay Program

Data thru: January '18



88% Program Budget  
101% Contract Time

# Contingency Cost

## Contingency Tracking (\$millions)

	Construction Contingency	CM/GC Contingency	Program Reserve	Total Contingency & Reserve
<b>Baseline Budget Amounts</b>	<b>\$61.8</b>	<b>\$32.5</b>	<b>\$117.0</b>	<b>\$211.3</b>
<b>Contingency Usage Through Jan 2018</b>	(\$42.8)	(\$4.6)	(\$24.0)	(\$71.4)
<b>Remaining Baseline Budget Amounts (Dec 2017)</b>	<b>\$19.0</b>	<b>\$27.9</b>	<b>\$93.0</b>	<b>\$139.9</b>
<b>Total Draws/Adds February 2018</b>	(\$2.8)	(\$0.9)	(\$2.2)	(\$5.9)
<b>Remaining Balances</b>	<b>\$16.2</b>	<b>\$27.0</b>	<b>\$90.8*</b>	<b>\$134.0</b>

### Uses of Contingency this period

Transit Center Building: ERRCS survivability, consolidated change requests, revisions to W systems, final closeout of TG3.0, Bus Ramp: modifications to Caltrans substation lot, Utility Relocation: OCS Fiberglass Panels at MUNI Bus Plaza; draw from program reserve for legal expenses. Bus Storage: off-haul/disposal price and quantity adjustment,

### Forecasted Contingency Use

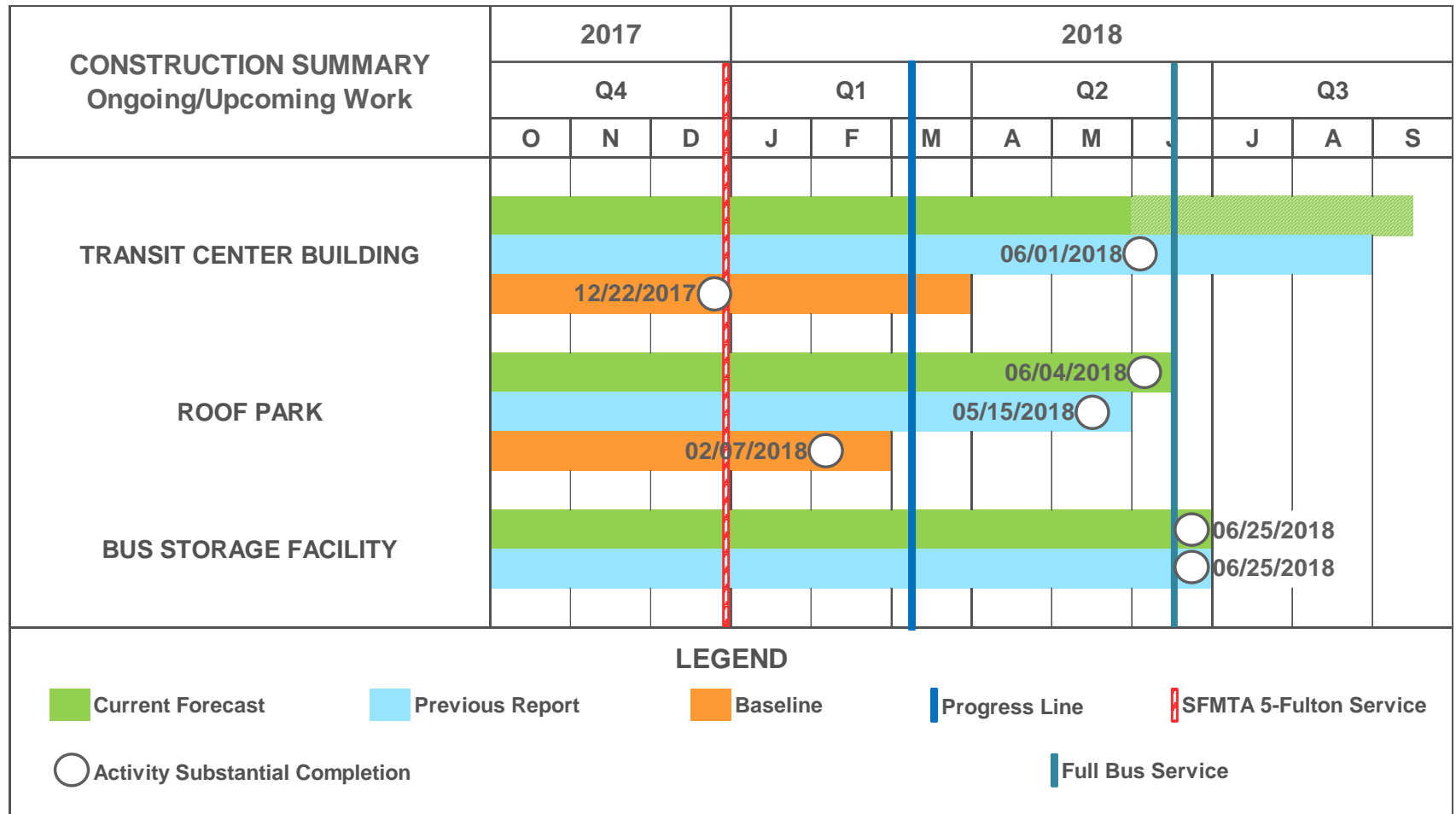
CM/GC: \$0.9M

Construction: \$2.2M

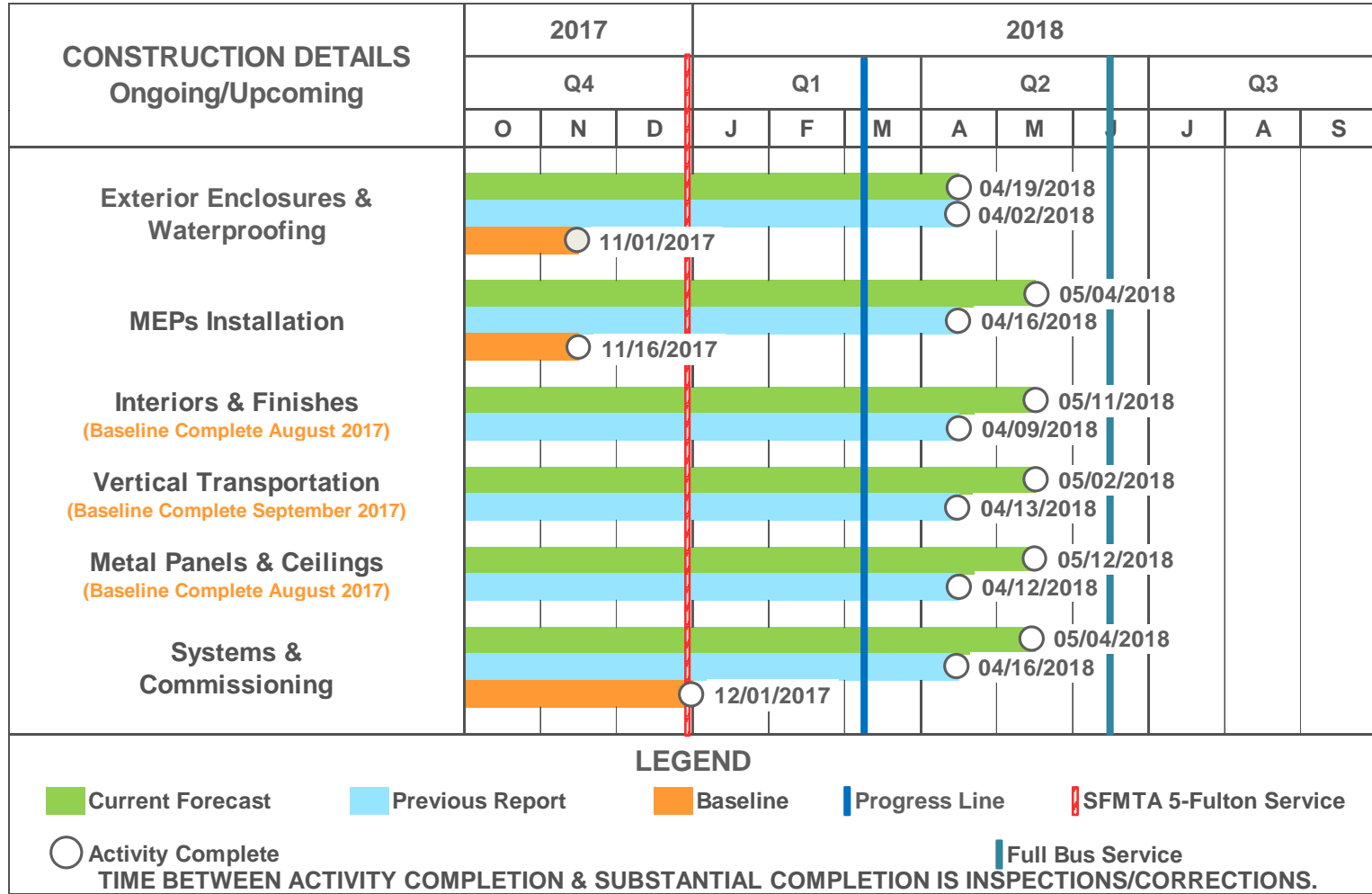
Program Reserve: \$0.0

\* Note: Program Reserve balance of \$90.8 million assumed to include contingencies earmarked for tenant improvements and legal costs related to 301 Mission St.

# Schedule



# Schedule



# Schedule Risk

---

## Recent Mitigation Measures

Due to the Continued Failure to meet Electrical Milestones:

- 30 Additional Rosendin Electric Electricians mobilized for State of Completion Assessment and increased management over Fisk.
- WPCS enlisted to provide for overall management over RSC and knowledgeable management of these systems installation.
- WOJV needs to develop a revised strategy for achieving a reliable and achievable schedule that will afford TJPA to advance Operational Planning with certainty.



# Schedule Risk

---

## WOJV to provide Electrical & Systems Schedule Refresh Strategy towards:

- Developing an Accurate State of Completion Assessment.
  - Rosendin Electric Field Validation of Fisk As-Built Drawings.
  - WPCS Evaluation of Status of Systems Installation.
- Establishing a Finalized Schedule Informed by Field Assessment with Subcontractor Buy-in.
- Submit Revised Schedule and Presentation to achieve Date Certain Substantial Completion Date and a Reliable Basis for Planning of TJPA Operations.



# Questions?

**TJPA**  
TRANSBAY JOINT POWERS AUTHORITY

201 Mission Street, Suite 2100 San Francisco, CA 94105 • 415.597.4620 • [www.tjpa.org](http://www.tjpa.org)