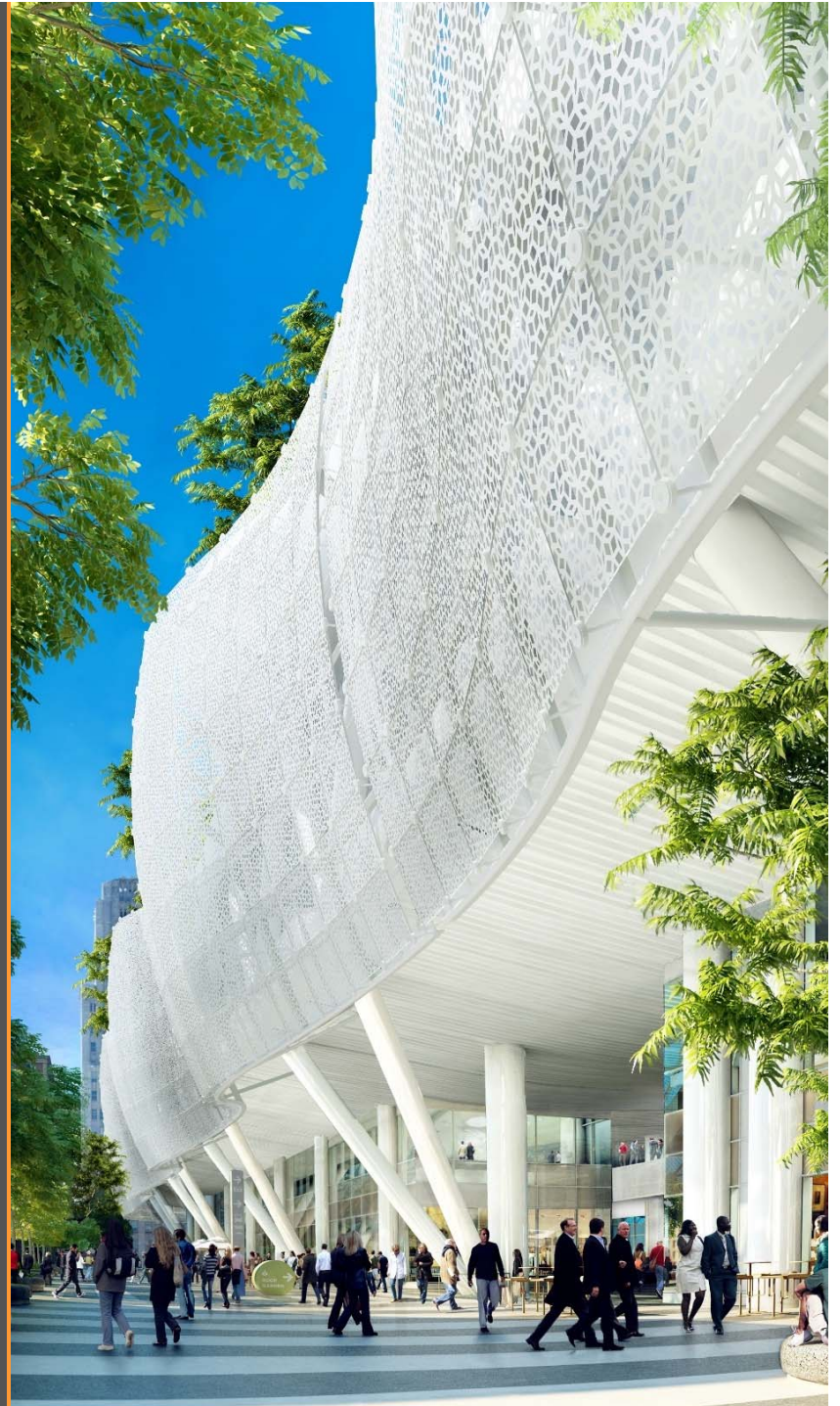


Construction Update

September 2017

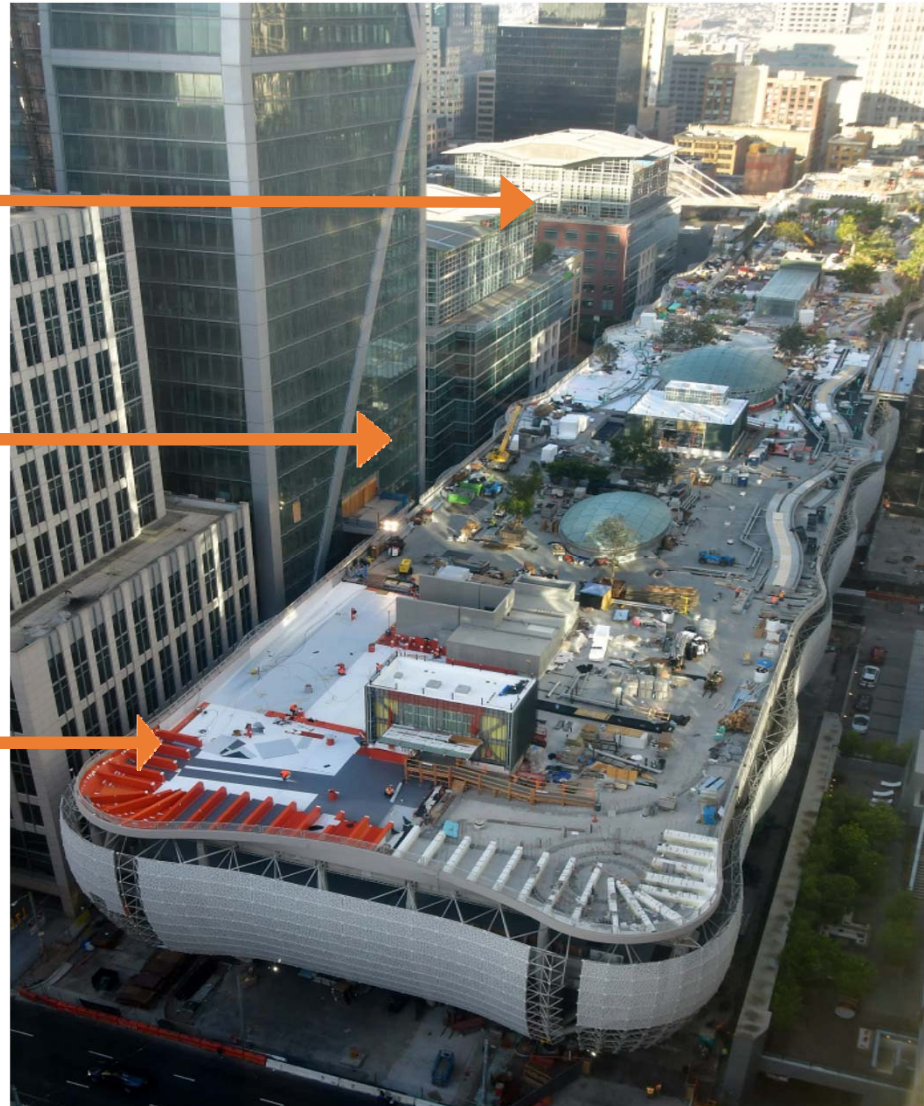


Project Overview

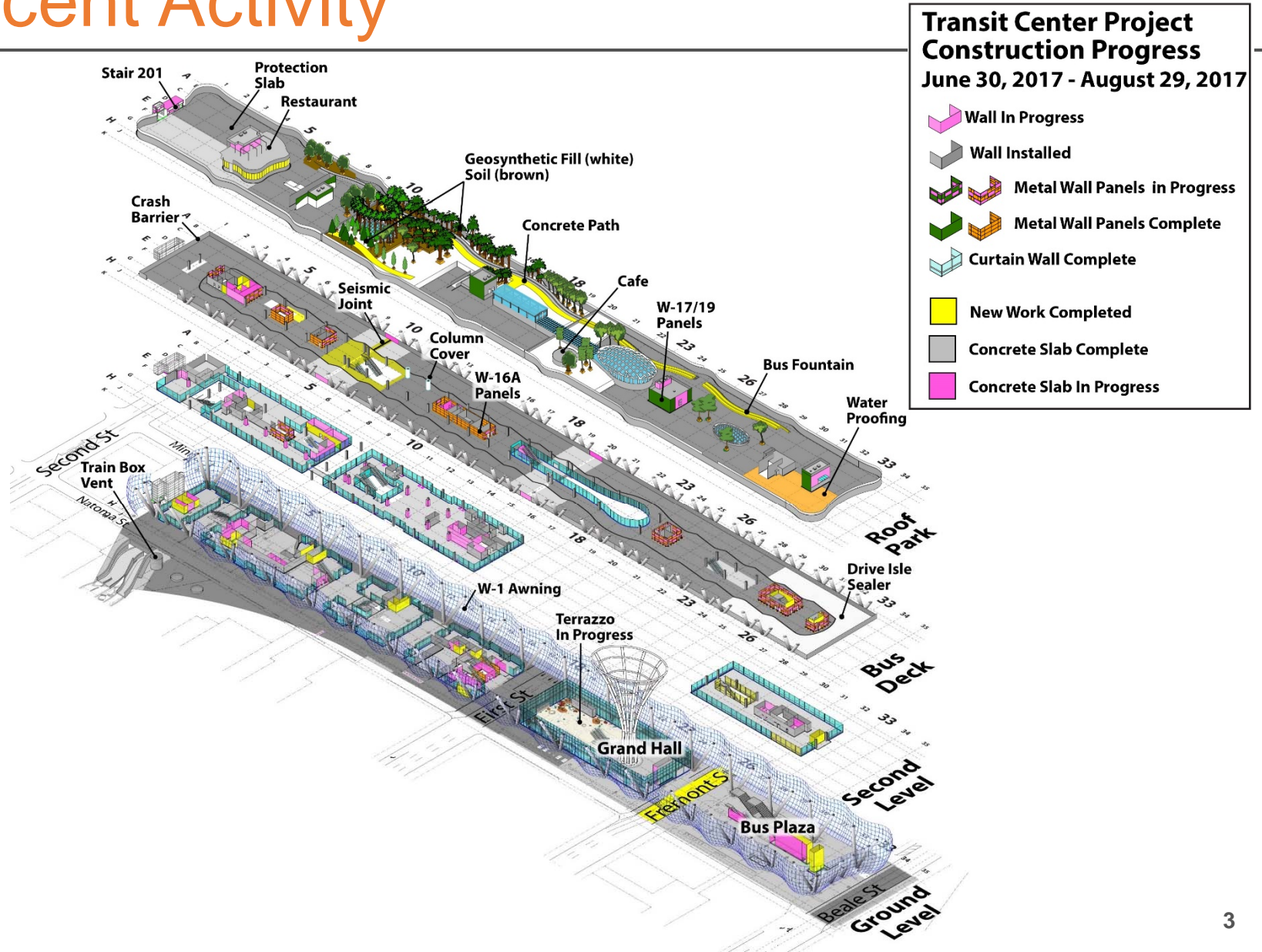
Western Zone Grid Line 1-10

Central Zone Grid Line 10-20

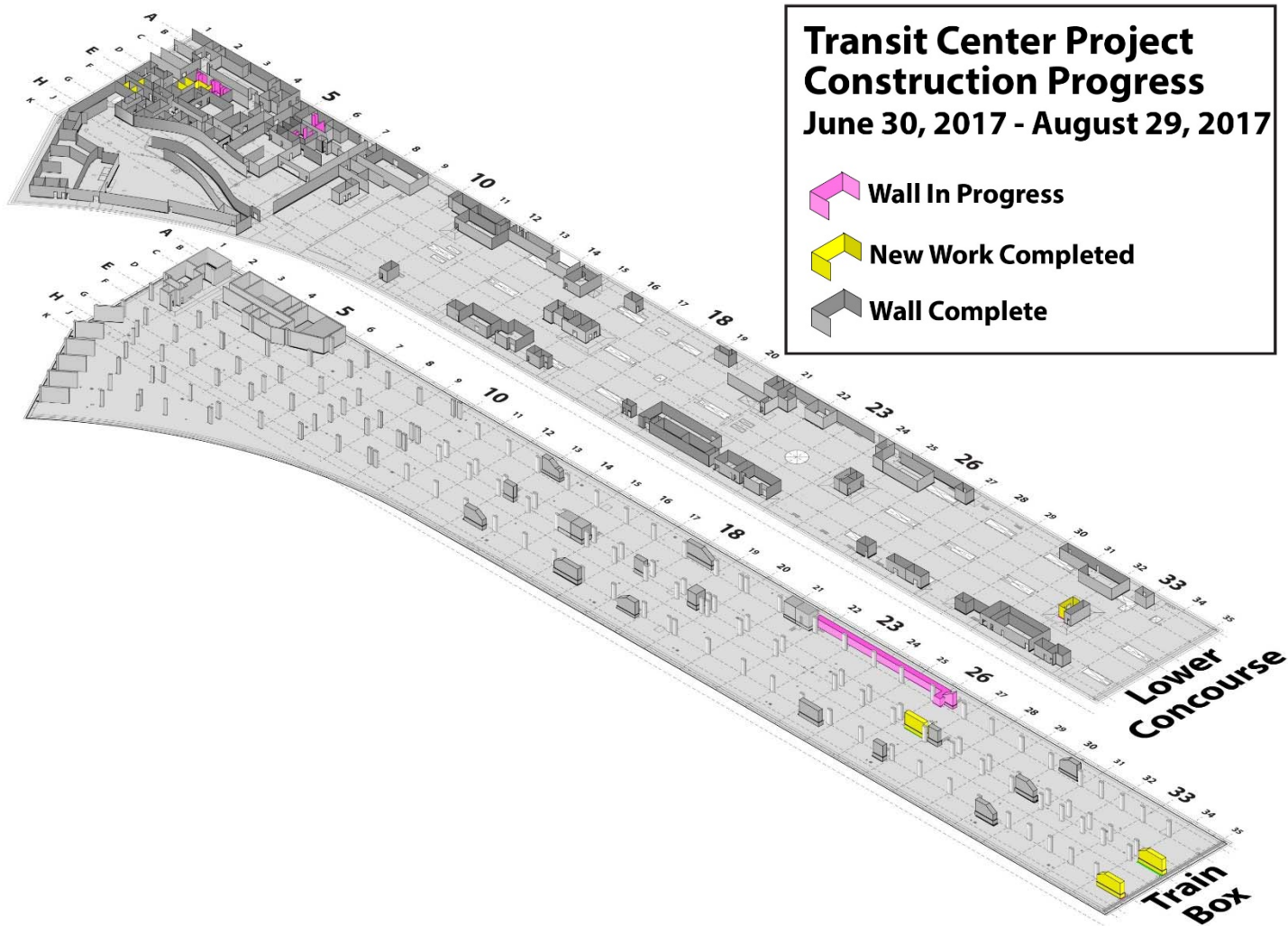
Eastern Zone Grid Line 20-35



Recent Activity



Recent Activity



Construction Activity

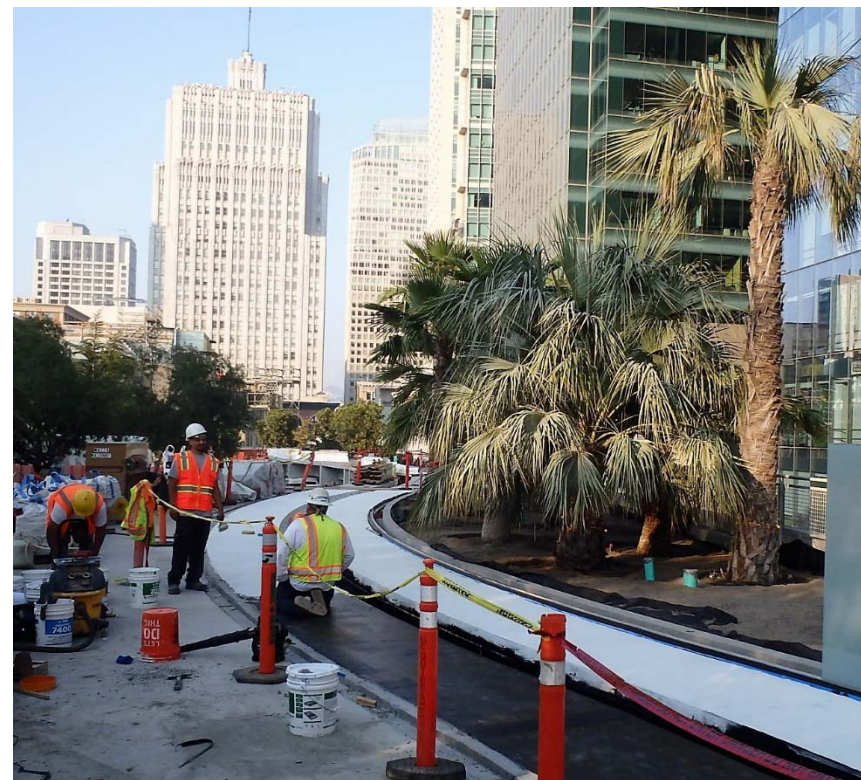
Transit Center - West (GL1-20)	Transit Center - East (GL20-35)
<ul style="list-style-type: none">-Rooftop waterproofing and protection last section underway.-Rooftop landscaping and pathway construction underway.-Bus Deck ceiling framing is complete.-Bus Deck column covers in progress.-Gypsum board and wall painting and Metal wall panels underway.-Elevator and Escalator construction and enclosures install underway.-Main Distribution Frame (MDF) Room and Intermediate Distribution Frame (IDF) Rooms are underway.-Electric Switchgear and Transformers tested by SFPUC and now turned over to Electrical.-Equipment rooms buildout in progress. (Fire water tanks, Pumps, HVAC Units).	<ul style="list-style-type: none">-Rooftop waterproofing now complete.-Rooftop landscaping and fountain started.-Bus Deck drive aisle coating is underway.-Bus Deck ceiling framing is underway.-Light Column "Oculus" coatings is now completed. Scaffold is removed.-Radiant Floor install start at Grand Hall.-Terrazzo install started at Grand Hall.-Elevator and Escalator construction and enclosures install underway.-Main Electric, Switchgear and Transformer tested by SFPUC and now turned over to Electrical.-Equipment rooms buildout in progress. (Pumps, Tanks and equipment being installed).

Rooftop Park - Landscaping



Rooftop Bus Jet
Fountain trough and
pathway is now under
construction in the
eastern zone.

First soil mix is now placed with
palm trees planted.



Rooftop Elevator penthouse Metal Wall Panels and Glass Canopy



Bus Deck Level – Bus Drive Aisle



Bus Deck Level – Ceiling Framing



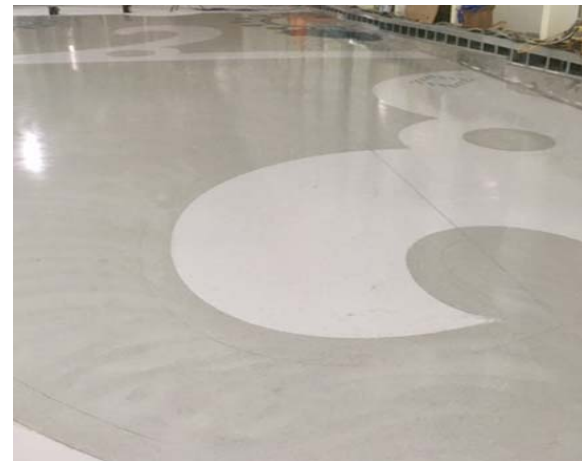
Ground Level – Bollards



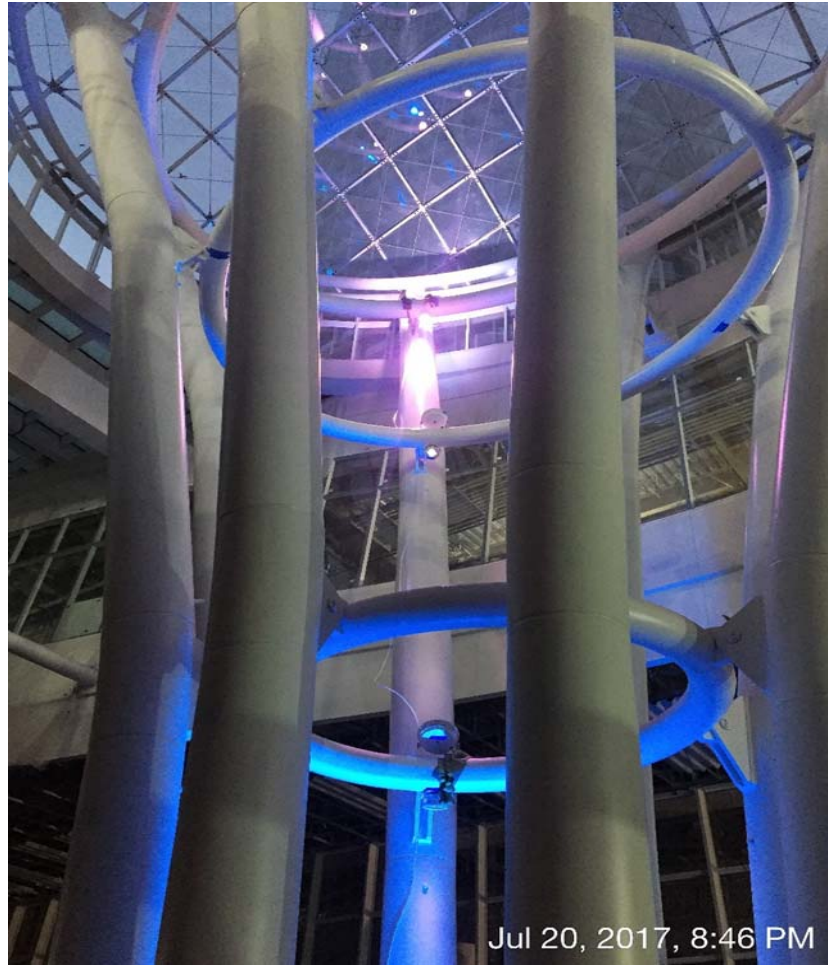
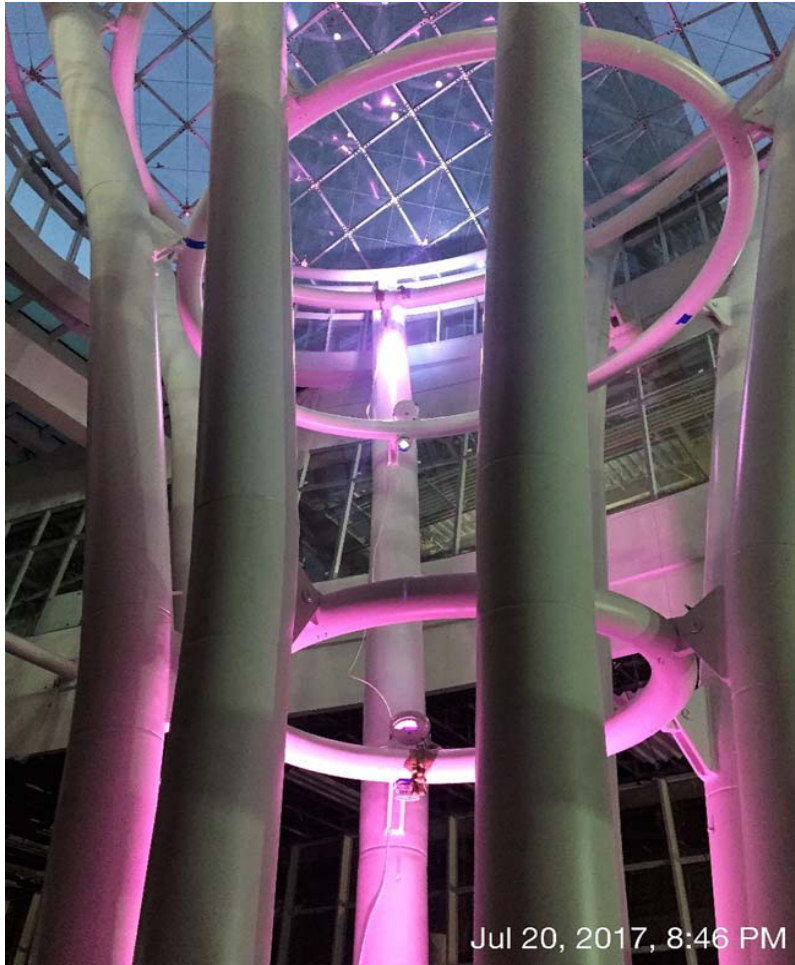
Ground Level – W1 Awning space frame



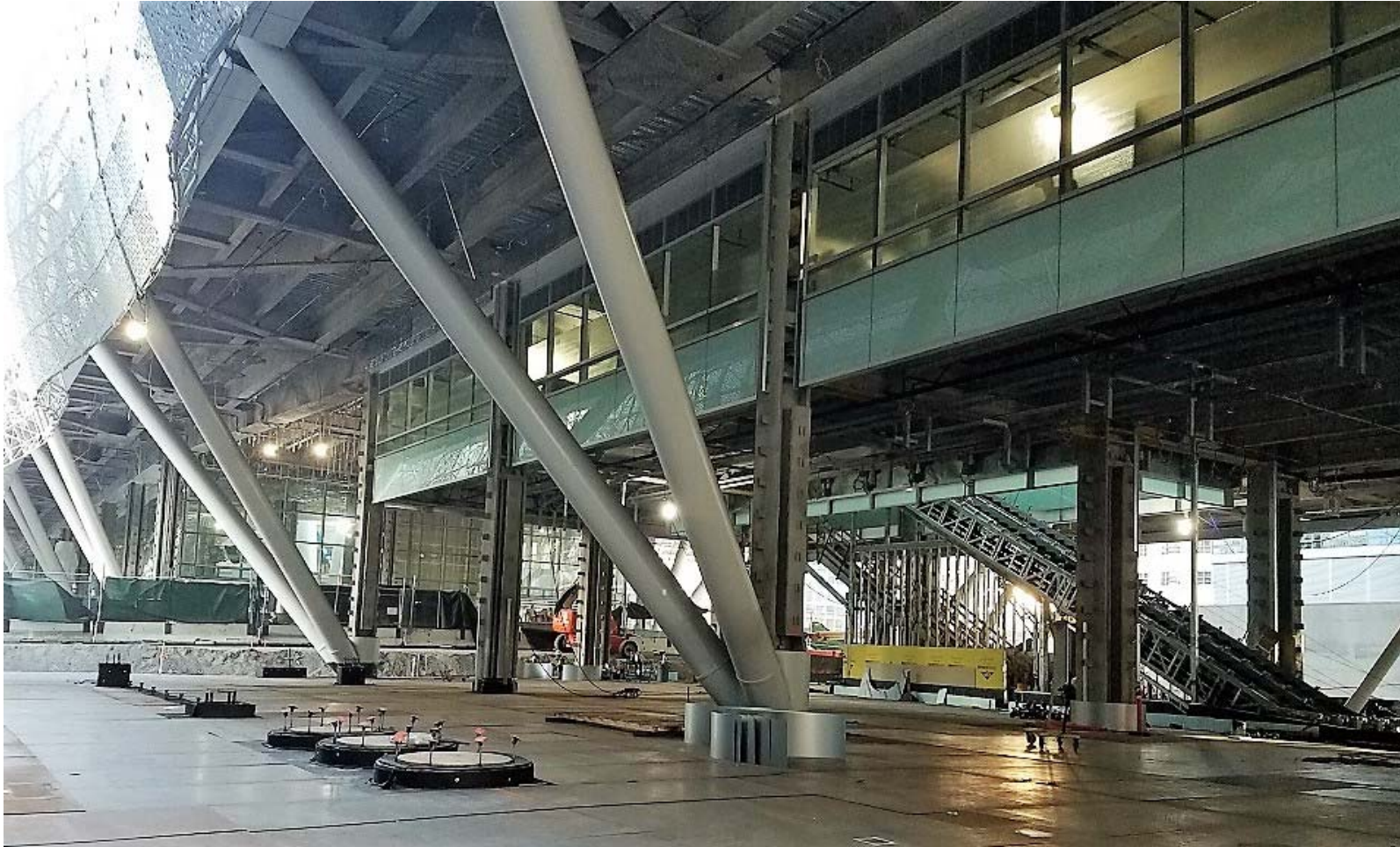
Grand Hall – Terrazzo design by artist Julie Chang



Grand Hall – Light Column LED lights

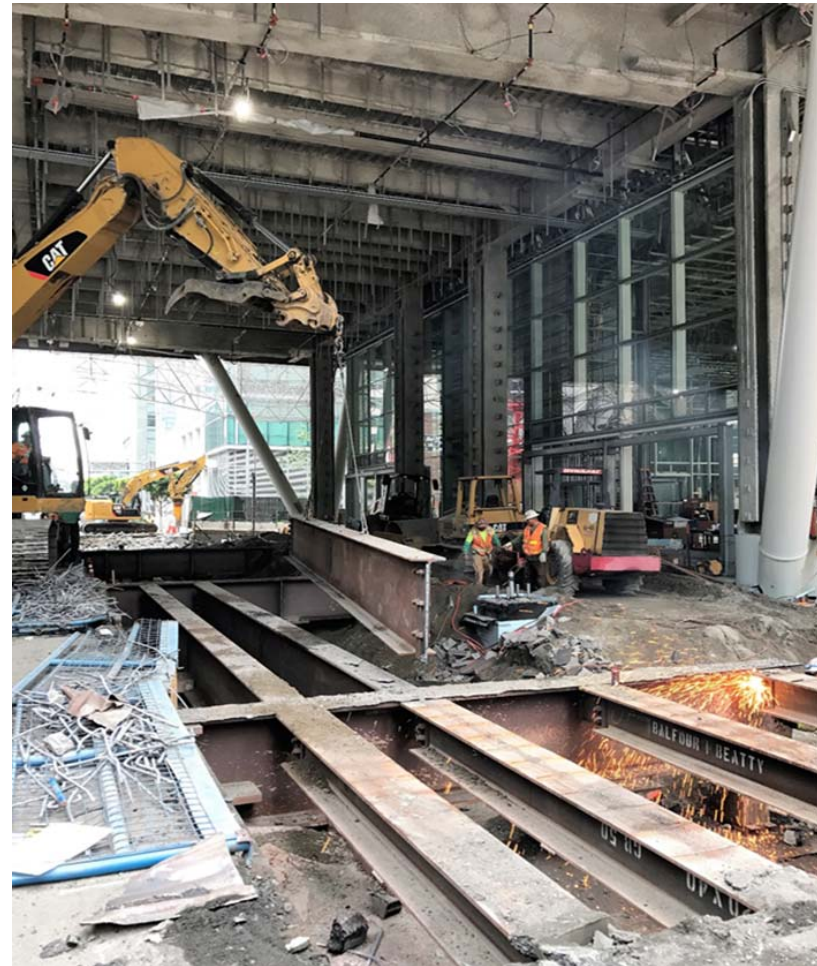


MUNI Bus Plaza – Waterproofing protection



Fremont Street temporary bridge removal

- Fremont Street Bridge in-service almost 5 years 2012-2017.
- Nights and weekend work required due to SFMTA traffic requirements.
- Public Outreach to our neighbors performed well in advance.
- Bridge removal work coordinated with both Salesforce Tower and 181 Fremont Projects.
- Bridge demolition and road restoration successfully completed in two weekend. (July 28-31 and August 11-14)



Bus Ramp and Cable Stay Bridge



Bus Ramp Project
Punchlist and
Electrical Testing
underway



Bus Storage Facility

Site Work:

- Excavation/grading in progress.
- Underground Utilities ongoing.
- Bus Storage ramp Falsework underway.
- Second Street full closure for Falsework over-head scheduled the weekend of September 23-24.

Challenges

Concrete supply has been a challenge and may impact the project schedule.



Safety and Labor Statistics

Recordable & Lost Time Incidents:

Recordable Incidents this period July & August 2017:	1	Lost Time Incidents this period July & August 2017:	1
Total Recordable Incidents –Year 2017:	7	Total Lost Time Incidents - Year 2017:	3

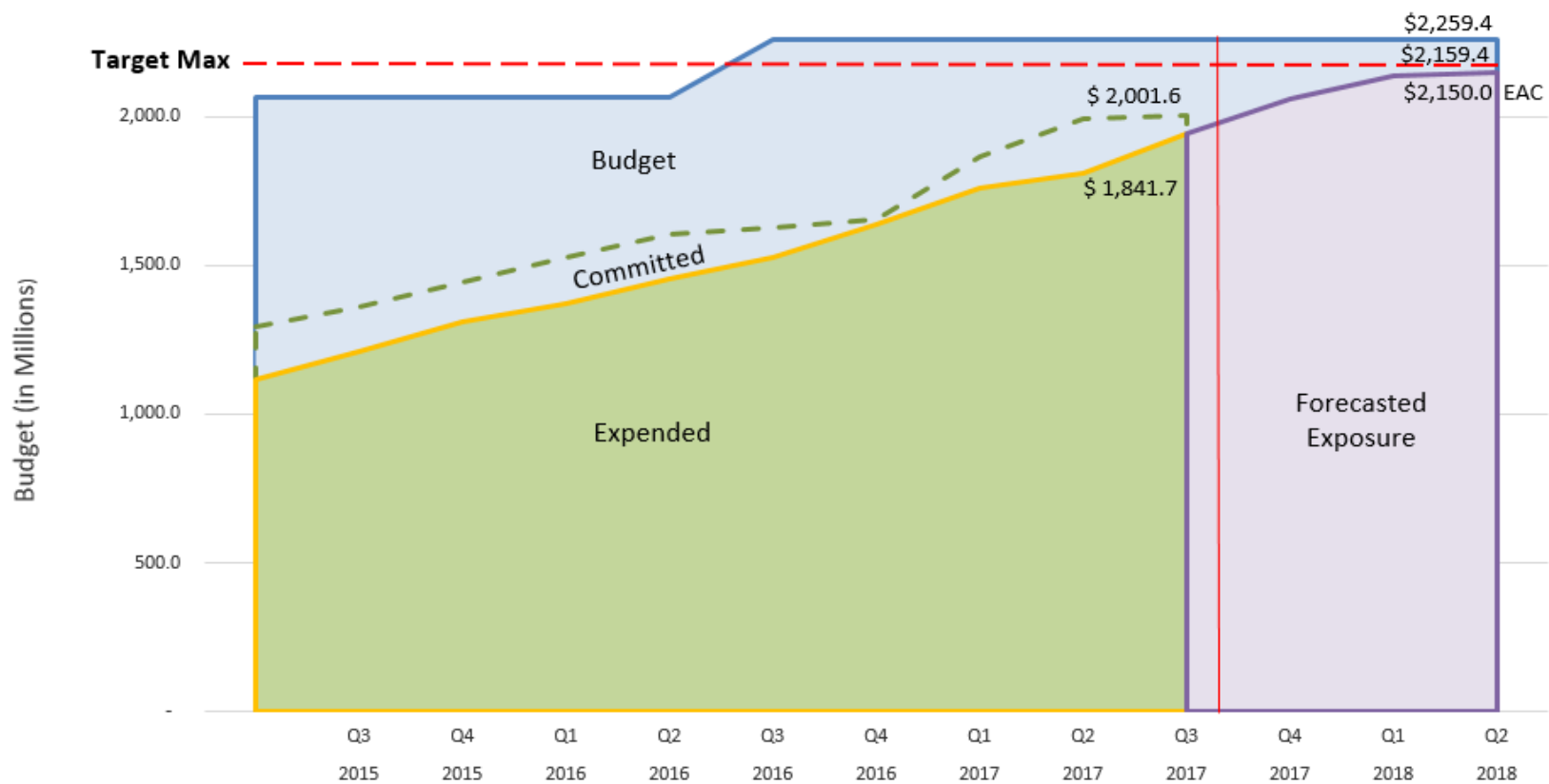
WOJV Average Annual Recordable Incident Rate 2011 Through 2015	3.04	WOJV Average Annual Lost Time Incident Rate 2011 Through 2015:	0.38
Nat'l/ State Annual Average Recordable Incident Rate 2011 Through 2015:	2.76	Nat'l/ State Annual Average Lost Time Incident Rate 2011 Through 2015:	1.36

Craft Hours:

Total Transit Center Craft Hours 2011 - YTD 2017 :	Total Craft Hours <u>July & August</u> <u>2017:</u>	Total Transit Center Craft Hours YTD 2017 :
3,913,708	133,043	1,067,793

Budget

Phase 1
Transbay Transit Center Program
 Data thru: July 17



Contingency Cost

Contingency Tracking (\$millions)

	Construction Contingency	CM/GC Contingency	Program Reserve	Total Contingency & Reserve
Baseline Budget Amounts	\$61.8	\$32.5	\$116.9	\$211.3
Contingency Usage Through July 2017	(\$24.6)	(\$3.4)	\$4.8	(\$23.2)
Remaining Baseline Budget Amounts (July 2017)	\$37.2	\$29.1	\$121.7	\$188.0
Total Draws/Adds August 2017	(\$3.6)	(\$0.2)	\$0.0	(\$3.8)
Remaining Balances	\$33.6	\$28.9	\$121.7	\$184.2

Uses of Contingency this period

Glass Curtain Walls – Modifications for Blast-Uplift Criteria and Exterior Glass Door Hardware

MEP – ASI 138 Plumbing revisions

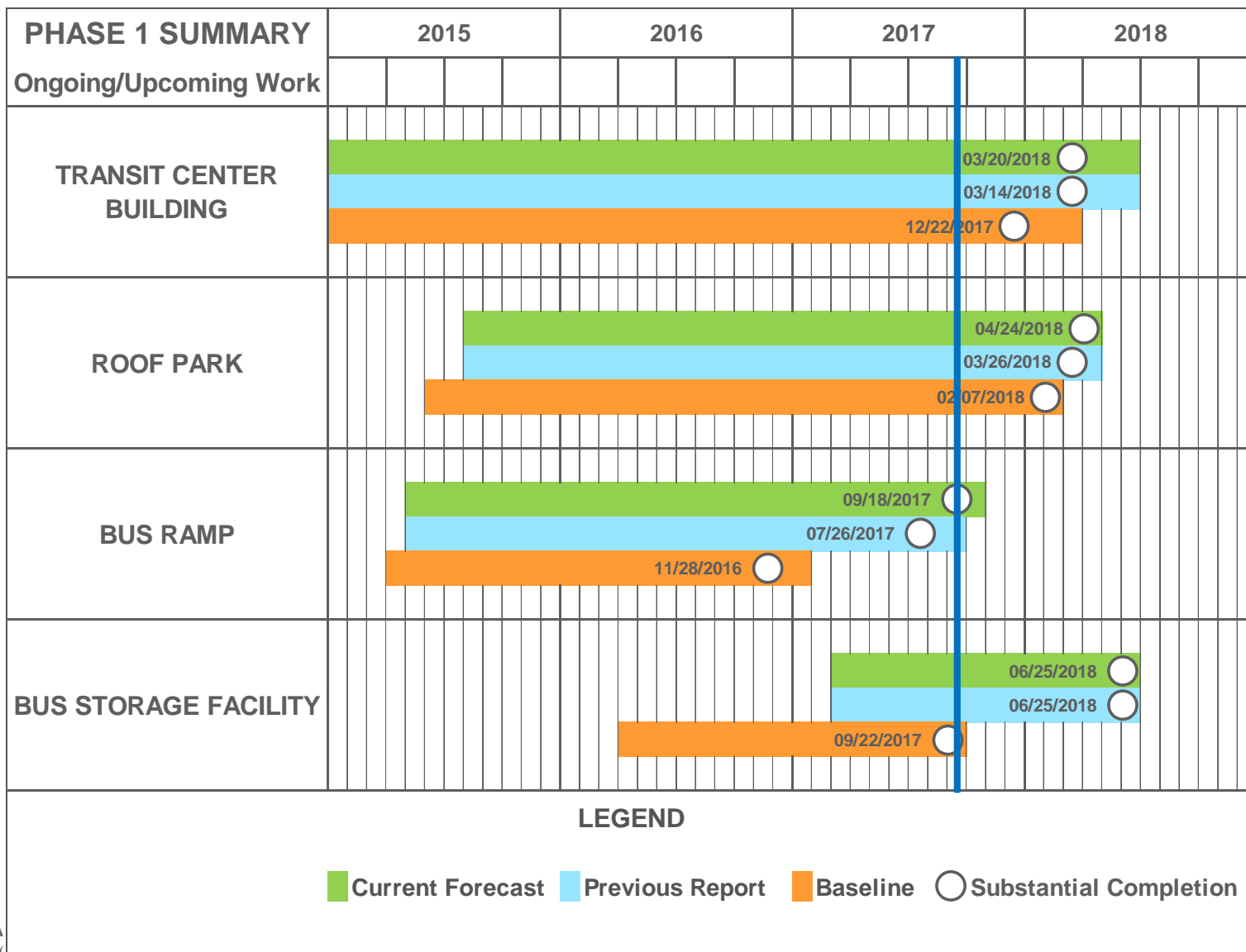
Forecasted Contingency Use

CM/GC: \$0.1

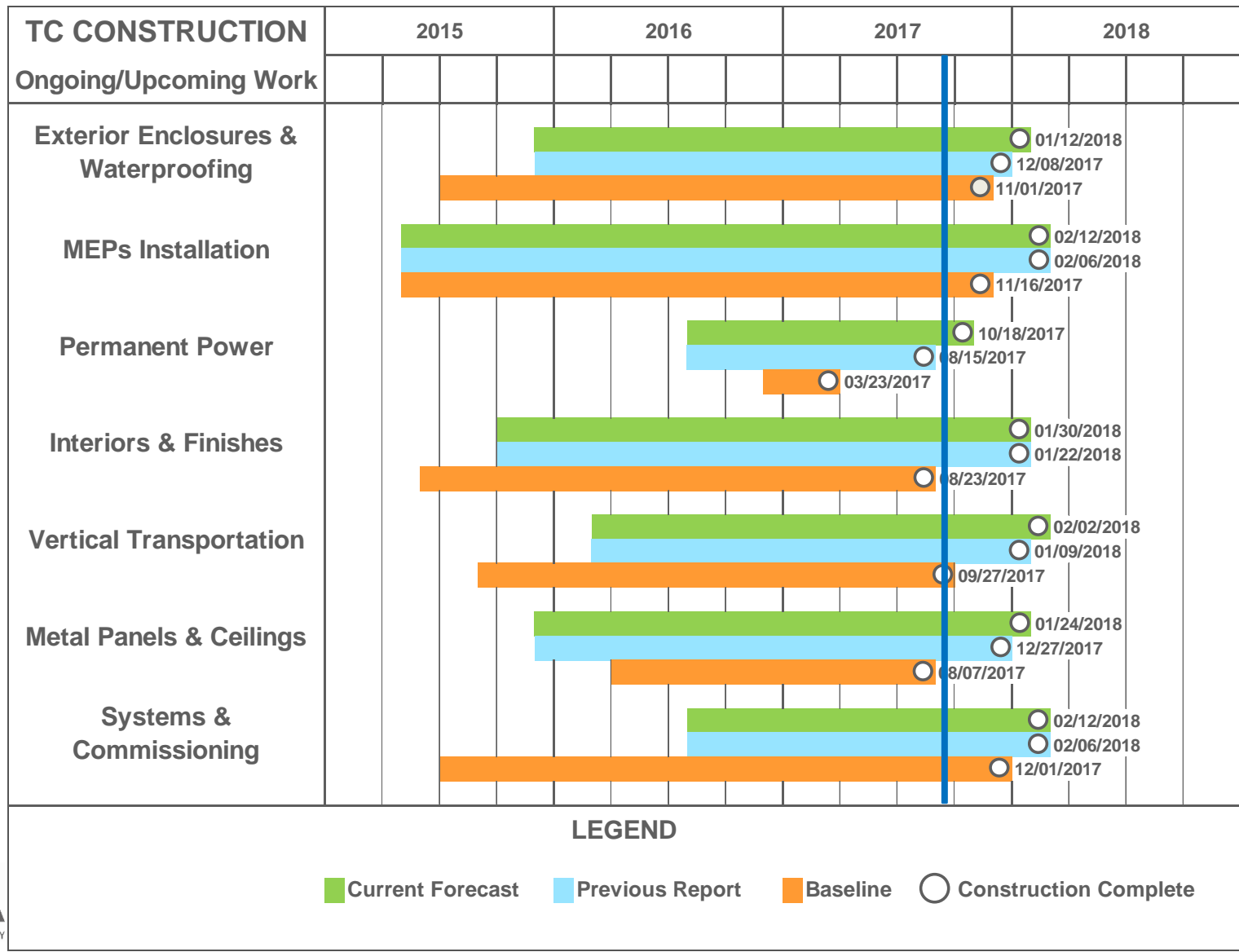
Construction: \$1.9

Program Reserve: (\$1.2)

Schedule



Schedule



Risks

Schedule

Schedule remains about 12 weeks beyond contractual Substantial Completion.

Challenged Activities include:

1. Electrical Subcontract Production Rates in both Normal Voltage and Low Voltage Distribution.
2. Fabrication and Installation of Column Covers.
3. Criticality of Muni Bus Plaza Operations prior to 2018.

Risks

Schedule

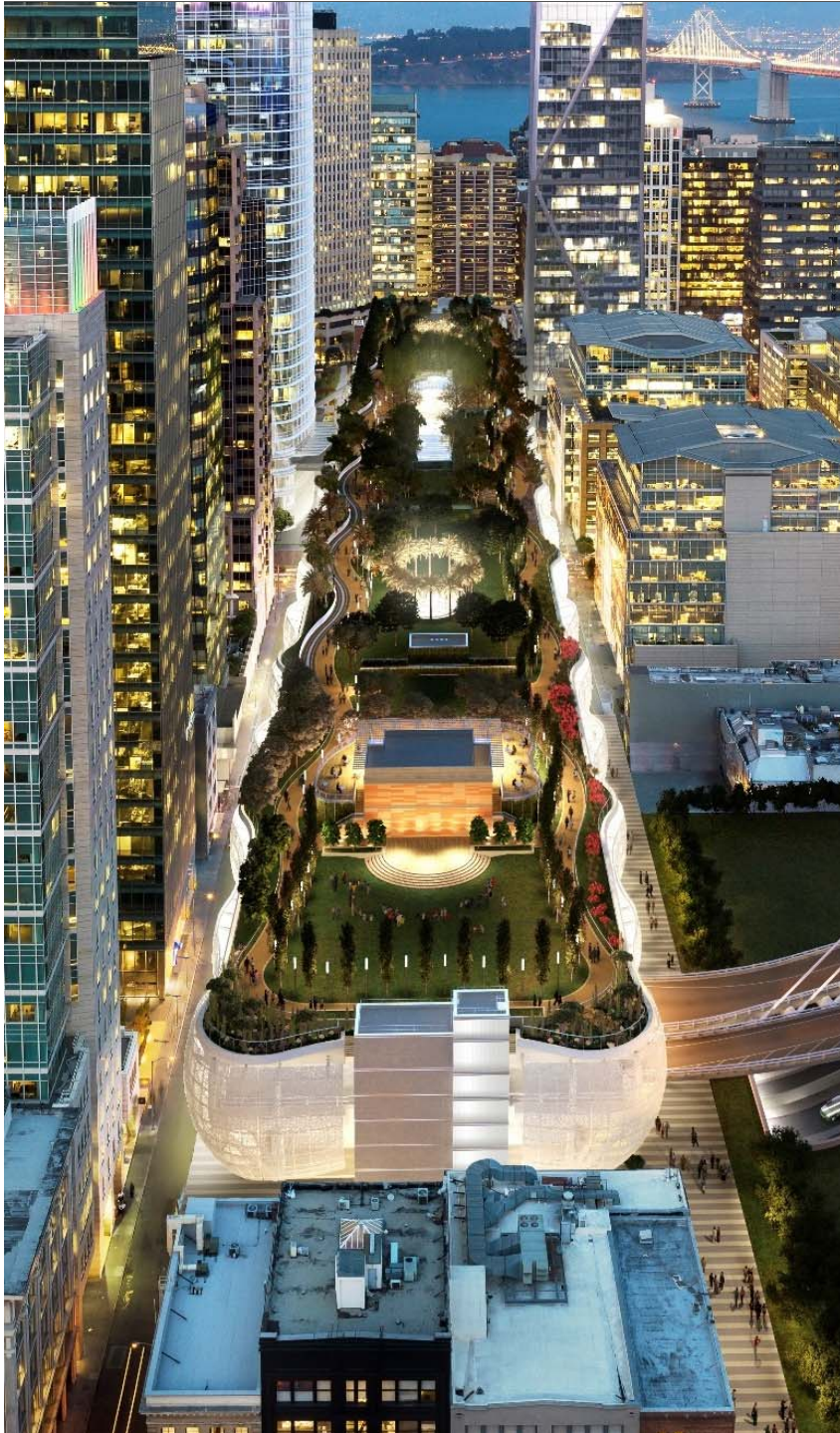
WOJV Mitigation Strategy Update:

1. Supplemental Personnel and Subcontractors particularly with Electrical, Framing and Finish personnel Scope Shift.
2. Resequencing Streetscape / Sidewalk work to support timely activation of Muni Bus Plaza and Retail Tenant Improvements.
3. Site Work and Building Exterior to normalize the neighborhood.
4. Greyhound and Amtrak areas ready for Tenant Improvement (TI) handoff.
5. Grand Hall and Bus Deck systems testing and final inspection.
6. Building Temporary Certificate of Occupancy (TCO) including Bus Deck and Grand Hall.
7. Rooftop park ready for TCO.

Risks

Inefficiency & Time Impact Claims

1. Closeout of Bus Ramp, Concrete & Steel Packages impaired by Time Impact Claims.
2. Anticipate Time Impact Claims from WOJV associated with Electrical Scope of Work Schedule impacts.
3. Immediate focus on Project Advancement:
 - Maintain December Bus Plaza Initial Operations
 - Maintain March Start of Full Operations
 - Avoid impact to advancing Tenant Improvement
 - Minimize Neighborhood Impact
4. Received WOJV “Equitable Adjustment” Change Order Request for Extended Staffing.
5. Current exposure accounted for in EAC to extent known and estimated.



Questions?

TJPA
TRANSBAY JOINT POWERS AUTHORITY

201 Mission Street, Suite 2100 San Francisco, CA 94105 • 415.597.4620 • www.transbaycenter.org