
EXHIBIT A - Trade Subcontractor Bid Package Manual and Forms – Contract #301000802

C... B Trade Package #
TG08.2 Exterior Awning System
Addendum # 2 3
~~December 26, 2013,~~
January 8, 2014 Rev. C B ...C



Table of Contents

I. BIDDER QUALIFICATION PROCESS	2
II. KEY DATES FOR BIDDING PROCESS.....	3
III. COMMUNICATION WITH WEBCOR/OBAYASHI JOINT VENTURE.....	5
IV. SCOPE OF THE PACKAGE AND BID ITEM INFORMATION	6
V. CONSTRUCTION SCHEDULE.....	11
VI. INSURANCE REQUIREMENTS.....	13
VII. CONTRACT DOCUMENT LIST	16
VIII.SUPPLEMENTARY DOCUMENTS LIST	18
ATTACHMENT 1 BID FORM AND SCHEDULE OF BID PRICES	1-1
ATTACHMENT 2 LOGISTICS	2-1

END OF TABLE OF CONTENTS

I. BIDDER QUALIFICATION PROCESS

If the Bidder is not previously qualified the Bidder shall submit a Request for Qualifications (RFQ) package no later than the date shown in the TG08.2 Package Timeline in Section II “Key Dates for Bidding Process.” The prequalified trade subcontractors/joint ventures listed below do not need to submit a RFQ package at this time.

Prequalified Trade Subcontractors/Joint Ventures:

- Crown Corr
- Josef Gartner USA, a division of Permasteelisa North America
- Enclos Corp.
- Skanska Steel Constructors

Notification of the qualification will be provided to the Bidder by the date shown in the TG08.2 Package Timeline. Bids submitted by non-qualified Bidders will not be accepted or opened. Non-qualified Bidders assume all risk and costs associated with submitting a bid if they are deemed not qualified.

Trade Subcontractors submitting an RFQ package during the bid period must use the “Request for Qualifications TG08.2” form available on the TJPA website (<http://transbaycenter.org/tjpa/doing-business-with-the-tjpa/current-contract-opportunities/exterior-awning>).

No Conflict of Interest: Webcor/Obayashi Joint Venture and the TJPA shall disqualify any Bidder that has a conflict of interest under Section C8.105 of the San Francisco Charter, Government Code Section 1090 et. seq., the Political Reform Act (Government Code Section 87100 et. seq.), or any other applicable conflict of interest laws. Any false, incomplete, or otherwise unresponsive statements made in connection with a proposal may be cause for its disqualification at Webcor/Obayashi Joint Venture and the TJPA’s sole discretion.

END OF BIDDER QUALIFICATION PROCESS

II. KEY DATES FOR BIDDING PROCESS

Each Bidder shall submit its “Bid Form,” “Schedule of Bid Prices,” and other applicable sections and forms in the Specifications and the Project Bidding Manual. Required submittal documents for the bid are listed in the Bidding Checklist (BCL) in the Project Bidding Manual.

Package Issuance: The Bid Package, except the drawings and specifications, will be available for download from the TJPA website (<http://transbaycenter.org/tjpa/doing-business-with-the-tjpa/current-contract-opportunities>), or by contacting Webcor/Obayashi Joint Venture by e-mail at TransbayBidding_TG08.2@webcor-obayashi.com. Information regarding how to obtain the drawings and specifications will be posted on the TJPA website with the IFB package on the Bid Package Issuance date.

Pre-Bid Conference: A pre-bid meeting and job walk for Trade Subcontractors interested in submitting bids will be held at the time and date shown in the TG08.2 Package Timeline below, in the Main Conference Room at the Transbay Joint Powers Authority office at 201 Mission Street, Suite 2100, San Francisco, California 94105. Attendance is optional, but highly encouraged.

Questions/Clarifications: Questions or requests for clarifications regarding the Bid Package must be submitted in writing to Webcor/Obayashi Joint Venture no later than the time on the date shown in the TG08.2 Package Timeline below. Questions on Bid Documents (QBD) form in the Project Bidding Manual shall be used for questions or requests for clarifications. Refer to “Communication with Webcor/Obayashi Joint Venture” for contact information.

Value Engineering (VE) Proposals: Each Bidder may submit Value Engineering (VE) Proposals as deductive alternates to their Bid to the TJPA offices at 201 Mission Street, Suite 2100, San Francisco, CA, 94105 by the time and date shown in the TG08.2 Package Timeline below. The VE Proposals shall consist of two parts, technical and cost, and must be submitted in a sealed envelope. No proposals will be accepted after the due date and time. Refer to Specification Section 00 04 20 for details. The VE Proposal submissions must be signed under penalty of perjury in the manner designated at the end of the form, by an individual who has the legal authority to bind the Bidder on whose behalf that person is signing. If any information provided by a Bidder becomes inaccurate, Bidder must immediately notify Webcor/Obayashi Joint Venture and provide updated accurate information in writing, under penalty of perjury.

Bid Submittal: Each Bidder shall submit sealed bids to the TJPA offices at 201 Mission Street, Suite 2100, San Francisco, CA, 94105 by the time and date shown in the TG08.2 Package Timeline below. No bids will be accepted after the due date and time. Bid submissions must be signed under penalty of perjury in the manner designated at the end of the form, by an individual who has the legal authority to bind the Bidder on whose behalf that person is signing. If any information provided by a Bidder becomes inaccurate, Bidder must immediately notify Webcor/Obayashi Joint Venture and provide updated accurate information in writing, under penalty of perjury.

Financial Responsibility: Webcor/Obayashi Joint Venture and the TJPA accept no financial responsibility for any costs incurred by a firm in responding to this Bid Package. Submissions to Webcor/Obayashi Joint Venture will become the property of the TJPA and may be used by the TJPA in any way deemed appropriate.

No Waiver: No waiver by Webcor/Obayashi Joint Venture and the TJPA of any provision of this Bid Package shall be implied from any failure by Webcor/Obayashi Joint Venture and the TJPA to recognize or take action on account of any failure by a Bidder to observe any provision of this Bid Package.

No Representations or Warranties: The information presented in this Bid Package and in any report or other information provided by Webcor/Obayashi Joint Venture and the TJPA to Bidders is provided solely for their convenience. It is the sole responsibility of Bidders to assure themselves that the information contained in this Bid Package and other documents are accurate and complete. No representations, assurances or warranties pertaining to the accuracy of such information are or will be provided by the TJPA or its advisors.

B

Package Timeline:

Bid Package Issued:	November 07, 2013
Pre-Bid Conference:	November 14, 2013 (2:00 p.m.)
Qualifications Due (for non-prequalified):	December 6, 2013 (2:00 p.m.)
Questions/Clarifications (QBD) Due:	January 09, 2014 (2:00 p.m.)
Notification of Qualification (for non-prequalified):	December 10, 2013
Value Engineering (VE) Proposals Due:	January 23, 2014 (3:00 p.m.)
Value Engineering Proposals Review:	January 24, 2014 – January 30, 2014
Bid Package Due:	January 30, 2014 (3:00 p.m.)
Public Bid Opening:	January 30, 2014 (3:00 p.m.)
Protest Period:	January 31, 2014 – February 6, 2014
Notification of Intention to Award Contract:	February 2014
TJPA Board Vote to Approve the Contract Award:	February 13, 2014

B

END OF KEY DATES FOR BIDDING PROCESS

III. COMMUNICATION WITH WEBCOR/OBAYASHI JOINT VENTURE

At no time during the bid process (defined as the time between issuance of this IFB until issuance of the Notice of Intent to Award Contract) shall Bidders contact any person(s) or staff of the TJPA, TJPA Program Management/Program Controls (PMPC) team, Webcor/Obayashi Joint Venture, CM Oversight (CMO), or other TJPA Consultants regarding this IFB. The only contact is for submission of questions using the contact directions below.

Submit questions using the Question on Bid Documents (QBD) form through Webcor/Obayashi Joint Venture. See the Project Bidding Manual for QBD form.

E-mail the completed QBD form to Webcor/Obayashi Joint Venture at
TransbayBidding_TG08.2@webcor-obayashi.com.

END OF COMMUNICATION WITH WEBCOR/OBAYASHI JOINT VENTURE

IV. SCOPE OF THE PACKAGE AND BID ITEM INFORMATION

TG08.2 Exterior Awning System

1. Package Scope Summary

The scope of work for the TG08.2 Exterior Awning System is described in the Contract Documents. Scope of work includes all labor, materials, equipment, tools, transportation, disposal fees, incidentals and any other costs/fees necessary to complete the work in accordance with the Contract Documents. All necessary work from mobilization to handover to the next Trade Subcontractor shall be included in the Bid.

The major items of the work for this package will consist of the following elements:

- Furnish and install all components of the W-1 Exterior Metal Awning system and related structures (i.e., structural struts, secondary support structure/frame, bracing, perforated metal panels and their associated patch plate assemblies).
- Furnish and install the secondary structural support, struts and connection braces off of the existing erected structural steel superstructure from Point of Connection (POC) using the Working Points (WP) shown in the model and in the Contract Documents.
- Provide all necessary shop and field welding for this Trade Subcontractor's connectors, bracing, struts and support ties. All exposed / visible welds require an AESS finish prior to the prefinished painting, also by this Trade Subcontractor.
- Furnish and install the W-1 system with raceways for electrical, lighting and/or low voltage running through and on the W-1 framework. Provide pull strings through the concealed pathways.

Trade Subcontractor is required to review the Contract Documents and be familiar with existing Site Conditions in accordance with all requirements set forth in the Prime Contract with respect to its scope of work (see Specification Section 00 07 00 – General Conditions, Article 3.03). This shall include, without limitation, the obligation to carefully review the appropriate portions of the Contract Documents a minimum of 35 days in advance of the work to be executed for the express purpose of checking for any manifest errors, omissions, discrepancies or ambiguities and notifying Webcor/Obayashi Joint Venture in writing promptly within this time period upon discovery of errors, omissions, discrepancies or ambiguities so that Webcor/Obayashi Joint Venture can properly notify the TJPA within the time period prescribed in Specific Section 00 07 00 – General Conditions, Article 3.03.C.

In addition, if Trade Subcontractor performs work that it knows, or reasonably should have known, to be contrary to the Building Code or other applicable laws, statutes, ordinances, rules and regulations without written notice to Webcor/Obayashi Joint Venture, Trade Subcontractor shall assume responsibility for such work and shall bear all costs of correction (see Specification Section 00 07 00 – General Conditions, Article 3.08.E).

2. General Work

All necessary general work shall be included in this package. As needed by Trade Subcontractor, the general work shall include, but shall not be limited to, site preparation, site safety, crane/rescue baskets, temporary lighting for night work, temporary task lighting for traffic/pedestrians, painted temporary barricades for overhead protection including lighting and signage, weather mitigation, surveying, clean-up, dump permits and fees, and small tools and equipment specific for this work package. Refer to Section IV, "Trade Subcontractor Requirements" in Project Bidding Manual and the Contract Documents for more information.

Trade Subcontractor is responsible for protection of adjacent properties, mitigation measures and monitoring, as specified in the Contract Documents.

Trade Subcontractor's cost of the general work, overhead, office cost, applicable permits/legal fees, administration, bonds, insurances, contingency, profit and other necessary activities for this project shall be included in the bid amount and shall be distributed into the Bid Items.

The following items for this package are discussed in detail in Section IV, "Trade Subcontractor Requirements" in the Project Bidding Manual. Additional requirements and/or clarifications that are specific to the current Trade Subcontractor Bid Package are included below and align, as indicated, with the corresponding section of the Project Bidding Manual.

12. Leave out areas

- b. Leave out areas to include two (2) full height areas, 25 feet wide, in the W-1 Exterior Awning Secondary Structure (frames) with exact locations to be determined by Webcor/Obayashi Joint Venture. These areas require later come-back installation of all components, i.e. frames, panels, lighting chases etc. to complete the overall installation and any affected alternate work.

D. Small Business Enterprise (SBE) Program

The SBE utilization goal for this Trade Subcontractor is 20% of the total value of Trade Subcontractor's bid value.

E. Exclusions

1. Do not include in bid price the Project ID Signs called for in Specification Section 01 15 01.
2. Do not include in bid price the Inspector's Office called for in Specification Section 01 15 90, Subsection 1.3.

3. Base Bid Item Scope

Exterior Awning System Package Scope of Work

This section is supplemental information only, used to describe how the Bid pricing is to be broken down and to generally describe the scope of the work defined in the Contract Documents. All necessary work from mobilization to handover to the next Trade Subcontractor shall be included in the Bid items.

The amount paid for all of the items below shall include full compensation for furnishing all labor, materials, equipment, installation, welding, tools, transportation, disposal fees, incidentals, all patch work including multiple mobilization/demobilizations as required, and any other costs/fees necessary to complete this work.

The scope of work for this Design/Build exterior undulating steel frame and metal panel awning wall system is further described in detail below. The work noted herein includes but does not necessarily describe all the items necessary to complete the entire package of work summarized herein.

W-1- Exterior Awning System

1. Provide all necessary system component and supporting data for testing criteria and all specified test results from blast analysis. Submit mathematical and analytical criteria requirements to prove requirements are substantiated for each assembly. Provide all calculations and documentation for verification of air-blast requirements as specified in the Contract Documents as well as Specification Sections 08 05 13 and 08 05 13 APA for impacted Sensitive Security Information (SSI) referenced in the Contract Documents.
2. Provide and perform both on- and off-site mock ups as specified in the Contract Documents.
3. Provide 3D surveying of the erected superstructure after each segment is complete to identify the exact position of the superstructure.
4. Furnish and install all components of the Design/Build W-1 system, made up of HSS formed pipe secondary structure supports, tapered structural struts / canopy supports, all connection stiffener plates attached to the 'basket column' steel supports, perforated metal panels and their associated patch plate assemblies.
5. Furnish and install a complete W-1 Exterior Awning System which includes but is not limited to pins, connector struts, cross bracing, and waterproofing end caps of all awning tubes. Provide all AESS finishes and isolate dissimilar metals and materials per the contract documents.
6. Furnish and install all associated aluminum pre-painted panels, Stainless Steel (SS) escutcheons around the tapered cantilever support arms, caulking and sealing, trim profiles and frame caps.
7. Furnish and install the OCS (Overhead Catenary Support) protection rail which is shown and/or specified in the Contract Documents.
8. Furnish and install all exposed metal elements with a factory painted finish as specified in the Contract Documents.
9. Furnish and install Bird-Shock Flex-Track complete with wiring to j-box location inside of building. Provide sealed sleeves at exterior penetrations.
10. The project will provide a rooftop rail mounted crane with operator for material hoisting and installation. Use of the crane must be scheduled with Webcor/Obayashi in advance of required use. This hoisting excludes rigging and distribution or spreading of materials once landed on the floor /roof.

B

11. If small hoisting equipment such as forklifts are required on the roof, account for all rooftop obstacles such as seismic joints, footing and support walls, upturned beams, shear keys, light pedestals, and all other obstacles which may be present and need to be maneuvered around so that damage does not occur. Reference Attachment 2 Logistics exhibit SL-027. Account for any reinforcement or shoring which may be required to support the structure for all hoisting equipment with a full load. Ensure that damage does not occur to work of other trades, including but not limited to, waterproofing, structural elements, light column, skylights, etc. Account for adequate reach to all sides of the building. The Structural Engineer of Record must approve all proposed hoisting plans if they impose a load to the building. Webcor/Obayashi Joint Venture must approve all proposed hoisting plans. If cranes are used in the street instead of on the roof, include all costs associated for lane and street closures. Account for neighborhood disruption, allowable lane/street closure time periods and moratorium blackout periods for the City of San Francisco.

B

B

Below the Line Specification Alternate #1:

1. Provide an alternate for the work specified in Specification Section 25 56 26 W-1 LED Dot Lighting Fixture System and indicated on the Architectural and Electrical Drawings.

Below the Line Additive Specification Alternate #2:

1. Provide an alternate for the work of making the overall W-1 Awning Penrose panels exhibit a continuous perforated pattern from panel to panel within each bay. Refer to Pattern Mapping Drawing A1-8147A.

Above the Line Specification Alternate # 3:

1. Provide an alternate to delete the cantilevered panels at the upper and lower locations throughout the W-1 Awning perimeter. Refer to exterior elevations A1-5102A, A1-5103A, A1-5104A, A1-5105A, A1-5106A, A1-5107A, A1-5202A, A1-5203A, A1-5204A, A1-5205A, A1-5206A, A1-5207A, A1-5301A and A1-5302A.

Below the Line Additive Alternate #4:

1. Provide a price for performing all hoisting activities for this scope of work in lieu of a rooftop rail mounted crane. Hoisting activities include loading materials to the roof, loading materials to the bus deck level for lay down and distribution, picking loads from delivery trucks, and installation of work. This hoisting excludes rigging and distribution or spreading of materials once landed on the floor /roof since this is included in the base scope of work. If a crane or additional small hoisting equipment such as forklifts are required on the roof, account for only the additional impacts of rooftop obstacles such as seismic joints, footing and support walls, upturned beams, shear keys, light pedestals, and all other obstacles which may be present and need to be maneuvered around so that damage does not occur. Reference Attachment 2 Logistics exhibit SL-027. Account for any reinforcement or shoring which may be required to support the structure for all hoisting equipment with a full load. Ensure that damage does not occur to work of other trades, including but not limited to, waterproofing, structural elements, light column, skylights, etc. Account for adequate reach to all sides of the building. The Structural Engineer of Record must approve all proposed hoisting plans if they impose a load to the building. Webcor/Obayashi Joint Venture must approve all proposed hoisting plans. If cranes are used in the street instead of on the roof, include all costs associated for lane and street closures. Account for neighborhood disruption, allowable lane/street closure time periods and moratorium blackout periods for the City of San Francisco.

Above the Line Additive Alternate #5:

1. Costs should be provided to include all necessary infrastructure in the W-1 Bid to allow the complete installation of a LED dot lighting system on the W-1 system at an undetermined future date. The ultimate LED dot lighting system under this Alternate should be equivalent to the Below the Line Specification Alternate #1 to include LED dot lighting as a complete installation at the time of fabrication and erection of the W-1 system. To that end, this Alternate would include the following:

- A modified patch plate that would be a complete and finished element, similar to that found in the base, fabricated of the same material and finish, that would allow installation of a future LED dot lighting fixture within the patch plate while fulfilling all structural and blast requirements for the W1 panel attachment. The final appearance of the patch plate with the LED lighting fixture should be equivalent to the Below the Line Specification Alternate for the Led dot lighting.
- Modifications to the W1 support structure framing, including raceways, access holes, cover plates, and pull strings as required to allow installation of the power and control wiring for the LED fixtures. These infrastructure elements must allow for a concealed yet accessible installation of the wiring elements.

Build Contractor will be responsible to engineer this Alternate to meet all elements of the design criteria, and to maintain the design intent as currently set out for both the initial installation as well as the ultimate installation of the LED dot lighting system.

B

END OF SCOPE OF THE PACKAGE AND BID ITEM INFORMATION

V. CONSTRUCTION SCHEDULE

Trade Subcontractor must pay particular attention to all other subcontractors whose work interfaces with the work of Trade Subcontractor. Trade Subcontractor will be responsible for any impacts to other subcontractors whose work Trade Subcontractor impacts in either the development of Trade Subcontractor's schedule or as a result of Trade Subcontractor's operations during the performance of its subcontract.

Within fifteen (15) calendar days following the Trade Subcontractor's receipt of the Notice to Proceed, Trade Subcontractor shall submit:

1. A detailed Trade Package Progress CPM Schedule using Primavera P6, based on Webcor/Obayashi Joint Venture's scheduling conventions, outlining all lead times and tasks beginning from the date of NTP (award of contract) to the projected completion.
 - a) Trade Subcontractor shall utilize a WBS and Activity ID convention to allow the Trade Progress Schedule to be integrated into the Webcor/Obayashi Joint Venture Master Project Schedule. Activity ID numbers shall be alphanumeric using "PS" (Material Procurement) and "EExx" (construction activities) as prefixes. The "xx" portion of the prefix shall designate the zone and area of work (for example "W1") and shall, at a minimum, mirror the designations for the awning work from the Master Project Schedule current at the time the scope of this package is awarded. Following the prefixes shall be a five digit numeric suffix (Example: EEW1-20000, EEW3-20100). The numeric suffix should start with 20000 for each area with a minimum increment of 10 between activity IDs (Example: EEW1-20000, EEW1-20010, EEW1-20020, etc). Similar activities for each work area should utilize the same numeric ID (Example: Install Primary Connections could be EEW1-20100 for area 1 and EEW2-20100 for area 2, etc.). Trade Subcontractor shall structure its Trade Package Progress Schedule utilizing the WBS structure per the Master Project Schedule current at the time the scope of this package is awarded, including but not limited to:
 - (1) Material Procurement;
 - (2) Off-site Pre-Fabrication; and
 - (3) Exterior Enclosures / Zone / Area / Awning and as specified in the Contract Documents.
 - b) Trade Subcontractor shall match existing activity IDs contained in the current Master Project Schedule, to the extent possible, in preparing Trade Package Progress CPM Schedule. However, should the existing Master Project Schedule lack necessary detail to fully account for Trade Subcontractor's scope, Trade Subcontractor shall incorporate additional detail into its Trade Package Progress CPM Schedule while conforming to the Activity ID convention prescribed in Item 1.a), above. In no case shall there be less detail than exists in the current Master Project Schedule.
 - (1) For added or revised Activity IDs in the Trade Subcontractor's schedule submission, the Trade Subcontractor shall provide an Activity ID "key" indicating the corresponding or approximate Activity ID from the current Master Project Schedule.
 - (2) Any added activity detail by the Trade Subcontractor shall not cause delay to the overall project schedule or follow-on Trade Subcontractor(s) Work.
2. In addition to the information specified under Specification Section 01 13 10, Article 1.4, B.1-9, on every schedule, baseline and update, the Trade Subcontractor shall indicate by activity the number of personnel--excluding office staff, non-working supervisors, safety, and quality personnel required to perform each activity.
 - a) If the TJPA or Webcor/Obayashi Joint Venture requests a recovery schedule pursuant to Specification Section 00 07 00, Article 7.01, G, said schedule shall be person-loaded as described in paragraph 2 above.
 - b) In addition to the information required in the Trade Subcontractor's Daily Report, per Section IV, "Trade Subcontractor Requirements", A, 4, b.1-6 of the Project Bidding Manual, the Trade

Subcontractor shall delineate its crew by the last submitted update schedule activity ID excluding office staff, non-working supervisors, safety, and quality personal. The Daily Report is to include a list of those schedule activities that are being worked on with remaining duration to complete activity. The Daily Report is also to include a list of those activities that are scheduled to be worked on, that are not started or that are underway with an accompanying explanation as to why this work is not being completed.

3. Trade Subcontractor's Schedule shall be sequenced so that it shall not impact any succeeding activities, Milestones, and/or the critical path of the Project Schedule.
4. Trade Subcontractor shall coordinate with other trade subcontractors for detailed work schedules and all costs associated with the schedule coordination shall be included in the Contract Amount.
5. To assist the Trade Subcontractor in the development of its Construction Schedule, Webcor/Obayashi Joint Venture has included a schedule, for reference only (see Exhibit I).

The schedule is to clarify preceding and succeeding activities to this Trade Package work, as approved by TJPA. Assume the schedule activities may change sequence and start plus or minus 90 calendar days from the date indicated on Exhibit I. Webcor/Obayashi Joint Venture has the right to re-sequence work activities to mitigate delays and warrants no specific performance sequence.

Prior to submission, Trade Subcontractor shall meet with Webcor/Obayashi Joint Venture to review the Trade Subcontractor's Schedule. If necessary, Trade Subcontractor shall provide revised schedule(s) until acceptable to Webcor/Obayashi Joint Venture and the TJPA, which will be then be implemented into the Project Schedule. No progress payments will be made to Trade Subcontractor until acceptance of Trade Subcontractor's schedule by both Webcor/Obayashi Joint Venture and the TJPA.

END OF CONSTRUCTION SCHEDULE

VI. INSURANCE C...AND BONDING ...C REQUIREMENTS

The insurance requirements outlined below supersede the related requirements in Specification Section 00 08 05 and Section 16 of the Long Form Subcontract.

1. TRADE SUBCONTRACTOR'S LIABILITY INSURANCE

Trade Subcontractor shall maintain in full force and effect, for the period covered by the subcontract, the following liability insurance with the following minimum specified coverage or coverage as required by laws and regulations, whichever is greater:

- A. Workers' Compensation in the statutory amount, including Employers' Liability coverage with limits not less than \$1,000,000 each accident, injury, or illness, including coverage for U.S. Long Shore and Harbor Workers' Act benefits, and Jones Act benefits, and Federal Employers Liability Act.
- B. Commercial General Liability insurance with limits not less than \$10,000,000 each occurrence combined single limit for bodily injury and property damage, including coverage for Contractual Liability, Independent Contractors, Explosion, Collapse, and Underground (XCU), Personal Injury, Broadform Property Damages, and completed operations. The required limit may be satisfied through a combination of primary commercial general liability and excess liability policies. Notwithstanding Section 16.7 of the Long Form Subcontract, the requirement to maintain \$10,000,000 in Commercial General Liability Insurance shall apply **ONLY** to Trade Subcontractor. Trade Subcontractor's subcontractors and/or lower-tier subcontractors shall maintain the levels of Commercial General Liability Insurance set forth in Section 16 of the Long Form Subcontract agreement.
- C. Commercial Automobile Liability insurance with limits not less than \$1,000,000 each occurrence combined single limit for bodily injury and property damage, including owned, hired or non-owned vehicles, as applicable.

2. ADDITIONAL COVERAGES

- A. Professional Liability Insurance: In the event that Trade Subcontractor employs professional engineer(s) or land surveyor(s) for performing Pre-Construction Services, field engineering, or preparing design calculations, plans and specifications, Trade Subcontractor shall carry or shall require its retained engineers and land surveyors to carry professional liability insurance with limits not less than \$2,000,000 each claim with respect to acts, errors, or omissions in connection with professional services to be provided under the subcontract, with any deductible not to exceed \$250,000 each claim. With respect to land surveyors only, the Trade Subcontractor or its retained engineers should only have to evidence \$1,000,000 in professional liability insurance covering that scope of work, consistent with the standard requirements set forth in Article 16 of the Long Form Subcontract.
- B. Environmental Pollution Liability Insurance: Trade Subcontractor or its subcontractors, who perform abatement of hazardous or contaminated materials removal shall maintain in force, through the term of this subcontract, Trade Subcontractor's pollution liability

insurance with limits not less than \$5,000,000 each occurrence combined single limit (true occurrence form), including coverage for on-site or off-site third party claims for bodily injury and property damage.

3. INSURANCE FOR OTHERS

For general liability, environmental pollution liability and automobile liability Trade Subcontractor shall include as additional insured the Contractor (Webcor/Obayashi Joint Venture), TJPA, its board members, and all authorized agents and representatives, and members, directors, officers, trustees, agents and employees of any of them.

4. FORMS OF POLICIES AND OTHER INSURANCE REQUIREMENTS

- A. Workers' Compensation Insurance shall be submitted to the Contractor before the commencement of any of the Work on Site.
- B. Before commencement of the work of this subcontract, certificates of insurance in form and with insurers acceptable to Contractor, evidencing all required insurance and with proper endorsements from Trade Subcontractor's insurance carrier identifying as additional insured the parties indicated under paragraph 3 above, shall be furnished to Contractor with complete copies of policies in accordance with the Project Bidding Manual.
- C. Approval of the insurance by the Contractor shall not relieve or decrease the extent to which Trade Subcontractor or subcontractors of any tier may be held responsible for payment of any and all damages resulting from its operations. All policies of insurance and certificates shall be satisfactory to Contractor.
- D. Trade Subcontractor and its subcontractors shall comply with the provisions of California Labor Code Section 3700. Prior to commencing the performance of work, Trade Subcontractor and all of its subcontractors shall submit to the Contractor a certificate of insurance evidencing liability for workers compensation or proof of self-insurance in accordance with the provisions of the California Labor Code.
- E. Liability insurance, except for professional liability insurance, shall be on an occurrence basis, and said insurance shall provide that the coverage afforded thereby shall be primary coverage (and non-contributory to any other existing valid and collectable insurance) to the full limit of liability stated in the declaration, and such insurance shall apply separately to each insured against whom claim is made or suit is brought, but the inclusion of more than one insured shall not operate to increase the insurer's limits of liability.
- F. Trade Subcontractor shall maintain professional liability coverage continuously throughout the term of this subcontract, and without lapse, for a period three years beyond the Contract Final Completion date to the effect that should occurrences during the Contract term give rise to claims made after expiration of the Contract, such claims shall be covered by such claims-made policies.

- G. Each such policy shall provide that no cancellation or non-renewal shall occur without the carrier giving to Contractor at least 30 days written notice prior thereto.

All notices shall be made to:

Webcor / Obayashi Joint Venture
1751 Harbor Bay Parkway, Suite 200
Alameda, CA 94502

- H. Trade Subcontractor, upon notification of receipt by Contractor of any such notice, shall provide Contractor a certificate of the required new or renewed policy at least 10 days before the effective date of such cancellation, change or expiration, with a complete copy of new or renewed policy, if requested.
- I. If, at any time during the life of this subcontract, Trade Subcontractor fails to maintain any item of the required insurance in full force and effect, all work of this subcontract may, at Contractor's sole option, be discontinued immediately, and all subcontract payments due or that become due will be withheld until notice is received by the Contractor as provided in the immediately preceding Paragraph 4.G that such insurance has been restored to full force and effect and that the premiums thereof have been paid for a period satisfactory to the Contractor.
- J. Any failure to maintain any item of the required insurance may, at Contractor's sole option, be sufficient cause for termination for default of this subcontract.

5. QUALIFICATIONS

Trade Subcontractor must provide coverage from insurance companies who shall be legally authorized to engage in the business of furnishing insurance in the State of California. All insurance companies shall have a current A.M. Best Rating not less than "A-, VIII" and shall be satisfactory to Contractor.

C...

6. SUBGUARD AND BONDING

1. **Trade Subcontractor is required to provide a Bid Bond for 5% of the total contract value.**
2. **Trade Subcontractor is not required to provide a Payment and Performance Bond. Subguard will be used in lieu of a Payment and Performance Bond.**
3. **Trade subcontractor shall provide all documentation required by Subguard Surety to verify qualification for program. ...C**

END OF INSURANCE REQUIREMENTS

VII. CONTRACT DOCUMENT LIST

The Contract Documents for this Trade Package include the following, as well as Supplemental Documents shown in Section VIII below:

C... B

Document Name	Description	Revision Name	Issue Date
Long Form Subcontract		Rev. 0	2013-11-07
Specification Division 00 and Division 01	Division 00 and Division 01 defined in Specification Section 00 01 10		2013-10-31
Specification Division 00 and Division 01	Division 00 and Division 01 defined in Specification Section 00 01 10		2014-01-02
Technical Specifications	Technical Specifications defined in Specification Section 00 01 10	TG08.2 IFB	2013-10-15 & 2013-10-29
Technical Specifications	Addendum #2 of Technical Specifications defined in Specification Section 00 01 10	TG08.2 IFB – Addendum # 2	2013-12-18
Drawings	Defined in Specification Section 00 01 15	TG08.2 IFB	2013-10-15 & 2013-10-29
Drawings	Addendum # 10 - Defined in Specification Section 00 01 15	TG08.2 IFB – Addendum #2	2013-12-18
Rhino Model	https://webcor.box.com/s/v1vc3lu1g45boq1twayn Password: WebcorBid!	TG08.2 IFB Addendum #1	2013-10-15 & 2013-10-29
Project Bidding Manual		Rev. 21	2013-10-15
<u>Exhibit A</u>	<u>Trade Subcontractor Bid Package Manual and Forms – Contract #301000802</u>	Rev. B	2013-12-26
Exhibit B	Warranty		2012-09
Exhibit C	Lien Releases	Rev. 07/2012	2012-08-22
Exhibit D	Sample Certificate of Insurance and Additional Insured Endorsement		
Exhibit E	LEED Subcontractor Submission Letter and Data Sheet	Rev. 2	2013-03-04
Exhibit F	BIM Requirements	Rev. 2	2013-11-07
Exhibit G	Subcontractor Payment Requisition		2012-04-03
Exhibit H	Site Specific Safety Plan	Rev. 8	2013-12-20

Document Name	Description	Revision Name	Issue Date
Exhibit I	Schedule		2013-12-18
Exhibit J	Contractor Quality Control Plan	Rev. 10	2013-11-04
Exhibit K	Sediment and Erosion Control Plan		2011-02
Exhibit L	Hazardous Materials Management Plan	Rev. 1	2011-03-11
Exhibit M	RFI Q&A Log		2013-11-07
Exhibit N	Noise & Vibration Mitigation Management Plan	Rev. 4	2012-09-07
Exhibit O	Air Quality Management Plan	Rev. 5	2012-01-16
Exhibit P	Construction Waste Management Plan	Rev. 6	2013-11-07
Exhibit Q	Apprenticeship Program	Rev. 0	2012-03-23
Exhibit R	Survey Information	Rev. 0	2012-03-23
Exhibit S	Traffic Control Plan	Rev. 2	2012-08-22
Exhibit U	Submittal Schedule	Rev. 0	2013-11-07
Exhibit W	Waterproofing		2011-05

B ...C

END OF CONTRACT DOCUMENT LIST

C... B

**VIII. SUPPLEMENTARY DOCUMENTS LIST
FOR PREVIOUSLY RELEASED TRADE PACKAGES (as of January 8, 2014)**

Several Trade Packages for the Transbay Transit Center Project have been previously issued, are currently under construction and/or are currently in the bidding process. This Trade Subcontractor shall review all of the supplemental documents listed below, which have been determined to be related to this Trade Package scope of work and be familiar with all conditions affecting this Trade Subcontractor's scope of work. All associated costs due to the conditions and plans of the reference documents including all coordination shall be included in the Bid Amount.

The documents of the major related Trade Packages listed below are currently available through Webcor/Obayashi Joint Venture's FTP website:

Document Type	Description	FTP Folder
Supplementary Document	Change Orders	1
Supplementary Document	Field Orders	2
Supplementary Document	Submittals	3
Supplementary Document	TG03 Buttress, Shoring, Excavation (BSE) Documents	4
Supplementary Document	TG06.0 Below Grade Concrete Documents	5
Supplementary Document	TG07.1R Structural Steel Superstructure Documents	6
Supplementary Document	Builder's Risk Insurance Policy	7
Supplementary Document	Exhibit M Attachments	50
Supplementary Document	TG05.8 Rooftop Cranes Documents	In the proposal process (The proposal documents are available. Refer to the TJPA website to obtain the documents.)
Supplementary Document	TG05.10 Temporary Facilities Documents	In the proposal process (The proposal documents are available. Refer to the TJPA website to obtain the documents.)

Supplementary Document	TG07.2 Structural Concrete Superstructure Documents	Under Bid (The bid documents are available. Refer to the TJPA website to obtain the documents.)
Supplementary Document	TG08.1 Design/Build Glazing Documents	Under Bid (The bid documents are available. Refer to the TJPA website to obtain the documents.)
Supplementary Document	TG18.1 Bus Ramp Documents	Under Bid (The bid documents are available. Refer to the TJPA website to obtain the documents.)

B ...C

Trade Subcontractor is responsible for reviewing and coordinating its work with all supplementary information provided.

The Supplementary Documents are available for download on the following FTP website:

<https://webcor.box.com/s/v1vc3lu1g45boq1twayn>

Password: WebcorBid!

END OF SUPPLEMENTARY DOCUMENTS LIST

ATTACHMENT 1 BID FORM AND SCHEDULE OF BID PRICES

TO THE TJPA EXECUTIVE DIRECTOR

In response to the Advertisement for Bids for the following public work:

TG08.2 – Exterior Awning System

The undersigned Bidder hereby proposes and agrees to execute the required contract, shall it be awarded to said Bidder, and to do all the work and furnish all the materials therefor, all in accordance with the Specifications and Drawings referred to in said Advertisement for Bids and at the prices named in the attached Schedule of Bid Prices.

The undersigned declares: That it is the Bidder (or by holding the position below indicated is authorized to execute this Bid Form on behalf of the Bidder); that said Bidder submits this Bid; that said Bidder has not, nor have any of its agents, officers, representatives or employees, been guilty of collusion with any officer or representative of Webcor/Obayashi or the TJPA, or with any other party or parties in the submission of this Bid; nor has said Bidder received any preferential treatment by any officer or employee of Webcor/Obayashi or the TJPA in the making or submitting of this Bid. The undersigned declares under penalty of perjury that all representations made on this Bid Form are true and correct.

Executed on _____ 20 _____

Telephone Number

Name of Firm or Corporation

Bidder or Authorized Representative

Position in Firm or Corporation

S.F. Business Tax Registration
Certificate Number

Address of Firm or Corporation Zip Code

Contractor's California License No.:

License Expiration Date:

BOND OR CHECK REQUIRED: There is herewith attached, as required by law, bid security in accordance with Project Bidding Manual.

NONDISCRIMINATION IN CONTRACTS AND SMALL BUSINESS ENTERPRISE PROGRAM:
Provisions of chapter 12B (including its implementing Rules and Regulations) of the San Francisco Administrative Code, and the TJPA Small Business Enterprise Program are incorporated herein and by reference made a part of the Bid Sections as though fully set forth. The Bidder and all lower-tier subcontractors and suppliers shall comply with these provisions and shall submit all required sections in a timely manner.

SCHEDULE OF BID PRICES
TG08.2 – Exterior Awning System

Name of Bidder: _____

The undersigned, having examined all referenced documents and the Drawings, understanding the terms and conditions of the Contract Documents and the local conditions affecting the performance and costs of the Work, and having fully inspected the Site in all its particulars, hereby proposes and agrees to fully perform the Work as indicated on the Drawings and in accordance with the requirements of the Contract Documents within the time stated therein, and for the following price(s):

C... B

No.	Item Description	Unit of Measure	Bid Price
1	Exterior Awning System	LS	
2	Off-site Mock-up	LS	
3	On-site Mock-up	LS	
4	Specification Alternate No. 3: Delete cantilevered upper and lower exterior awning panels throughout W-1 system.	LS	
5	Alternate No. 5: Prepare W-1 for LED Dot Lighting to be installed at a later date.		
6	ALLOWANCE- Specification Section 01 10 20 /APH	LS	\$50,000
7	BOND	LS	
TOTAL BASE BID PRICE			
PERFORMANCE AND PAYMENT BOND RATE (This is for informational purposes only)			%
POTENTIAL PAYMENT AND PERFORMANCE BOND COST (Total Bid Cost x Bond Rate, this is for informational purposes only)			\$
8	Specification Alternate No. 1: Provide an alternate for the work specified in Section 26 56 26 W-1 LED Dot Lighting Fixture System and indicated on the Architectural and Electrical Drawings.	LS	
9	Add Specification Alternate 2: Provide alternate for continuous Penrose pattern from panel to panel within each bay.	LS	

No.	Item Description	Unit of Measure	Bid Price
10	Add Alternate 4: Price for supplying crane to hoist and erect the W-1 System and components completely.	LS	

B ...C

Bidder shall furnish a price for all Bid items included in the Total Base Bid Price and failure to do so will render the Bid as non-responsive and will be cause for its rejection. In determining the successful Bidder, only the total of all Bid items and accepted Value Engineering ("VE") Proposals will be considered. No award will be made based on individual bid items or individual VE Proposals.

In case of discrepancy between the sum of Bid item amounts and the Total Base Bid Price, the sum of said amounts shall prevail. In case of discrepancy between words and figures, the words shall prevail.

Accepted VE Proposals, if any, shall be deducted from the Total Base Bid Price to determine the Bidder's Total Bid Price.

Alternates, if listed, may be additive or deductive. Bidder should bid all Alternates specified; however, failure to bid will not be cause for rejection of a Bid. In the event that the TJPA selects an Alternate for which Bidder did not submit a price, the Bidder's Bid will be deemed non-responsive and will be cause for its rejection.

The TJPA's prioritization of Alternates, if any, and the amount available in the construction budget will be announced immediately before the opening of the Bids. The Contract, if awarded, will be awarded to the responsible Bidder who submits the lowest responsive Bid. If the Total Bid Price of all Bids submitted exceeds the construction budget, Deductive Alternates, if any, will be deducted, in order of priority, from the Total Bid Price. Only those Deductive Alternates necessary to reduce the overall cost to the TJPA below the construction budget will be deducted from the Total Bid Price to determine the lowest responsive Bid, and in such a case, the lowest responsive Bid will be the lowest combination of Total Bid Price and those Deductive Alternates deducted. If the Total Bid Price of any Bid is less than the construction budget, Additive Alternates, if any, will be added, in order of priority, to the Total Bid Price, and in such a case, the lowest responsive Bid will be the lowest combination of Total Bid Price and those Additive Alternates added. Additive Alternates will be added to the Total Bid Price only if the addition of the Additive Alternate(s) does not cause the overall cost to the TJPA to exceed the construction budget.

Bidder further proposes and agrees that Alternates not selected by the TJPA at the time of award may be incorporated into the Contract by Change Order, based on Bidder's original Alternate amount named on the Schedule of Bid Prices.

Notes:

1. Alternates shall cover all costs of alternate Work as indicated on the Bid Documents only and shall not include Work of Base Bid or any Bid items of the Total Bid Price. Alternate prices shall include markups for overhead and profit. The Bidder shall be responsible to indicate by using plus (+) or minus (-) signs whether alternate amounts are intended to be added to or subtracted from the Total Bid Price.

2. The TJPA will make the actual addition of Alternates to or subtraction of Alternates from the Total Bid Price. In case an additive Alternate amount does not include a plus or minus sign, the amount will be presumed to be additive (+) to the Total Bid Price. In case a deductive Alternate amount does not include a plus or minus sign, the amount will be presumed to be deductive (-) from the Total Bid Price.

Bidder acknowledges and agrees that this Bid, if not withdrawn prior to the scheduled time for receipt of Bids, shall not be withdrawn for a period of 90 days thereafter.

Total Bid Price:
\$

In Written Words:

Bid submitted by:

_____(seal)
Name of Firm, Corporation, Partnership or Joint Venture

Names of All Partners, if Partnership

State of Incorporation, if Corporation

Signature of Bidder or Authorized Representative

Date of Bid

Name and Title of Authorized Representative

Note: If Bidder is a corporation, set forth the legal name of the corporation together with the signature of the officer or officers authorized to sign contracts on behalf of the corporation. If Bidder is a partnership, set forth the name of the firm together with the signature of the partner or partners authorized to sign contracts on behalf of the partnership. A corporate authority document which indicates individual is authorized to execute bid documents on behalf of the Firm, Corporation, Partnership or Joint Venture shall be attached.

END OF BID FORM AND SCHEDULE OF BID PRICES

ATTACHMENT 2 LOGISTICS

The following attached drawings present the conceptual logistical as-built plans. Locations and configurations are for reference and subject to change:

C... B

SL-001 Site Logistics Plan
SL-002 Site Truck Routing Plan
SL-025 Site Logistics Construction Zones X-01 Logistics Aerial View
SL-027 Rooftop Obstructions
A101 Personnel and Material Hoist Layout – Bracing
A102 Personnel and Material Hoist Layout – Lower Concourse
A103 Personnel and Material Hoist Layout – Ground Level
A104 Personnel and Material Hoist Layout – Second Level
A105 Personnel and Material Hoist Layout – Bus Deck Level
A106 Personnel and Material Hoist Layout – Roof Level
A107 Personnel and Material Hoist #1 Location
A108 Personnel and Material Hoist #2 Location
A109 Personnel and Material Hoist #3 Location
A110 Personnel and Material Hoist #4 Location
X-01 Logistics Aerial View
X-03 3D Section
X-04 3D Section
X-05 3D Section West Facing
X-06 Crane Section
X-07 Roof Rail-Mounted Cranes
X-08 Temporary Platform
X-15 Rooftop Crane and Tower Crane Logistics
X-16 Natoma-Howard St. Area Logistics
X-17 Rail Crane Logistics
X-18 Rail Crane Logistics 3D Section

B ...C

END OF LOGISTICS

ISSUANCE LOG

C... B

REV No.	ISSUE	DATE
0	Issued For Bid TG08.2	2013-11-07
A	Addendum # 1	2013-11-27
B	Addendum # 2	2013-12-26
C	Addendum # 3	01/07/2014

B ...C

END OF EXHIBIT A



1751 HARBOR BAY PARKWAY
SUITE 200
ALAMEDA, CA 94502
Phone: (510) 748-1900
Fax: (510) 748-7829

JOB SITE
Address: 175 BEALE ST
SAN FRANCISCO, CA 94105
Phone: 415-398-2700
Fax: 510-748-7830

TRANSBAY TRANSIT CENTER

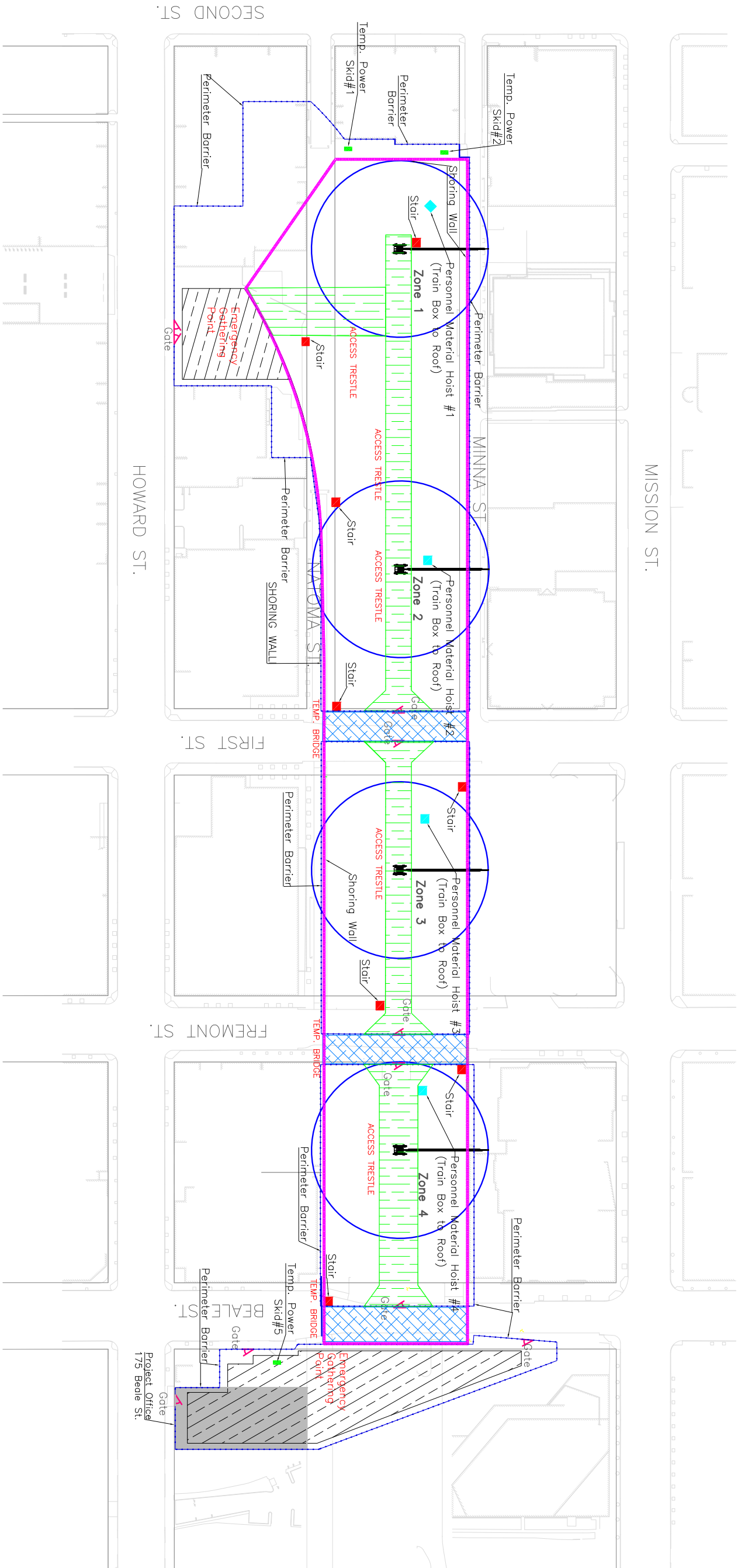
SAN FRANCISCO, CA

Revision Block	
Rev. No.	Description
01	BSE Phase
02	Updated Main & Material Hoists
03	Updated Main & Material Hoists
04	Updated Main & Material Hoists
05	Updated Main & Material Hoists
06	Updated Main & Material Hoists
07	Updated Main & Material Hoists
08	Updated Main & Material Hoists
09	Updated Main & Material Hoists
10	Updated Main & Material Hoists
11	Updated Main & Material Hoists
12	Updated Main & Material Hoists
13	Updated Main & Material Hoists
14	Updated Main & Material Hoists
15	Updated Main & Material Hoists
16	Updated Main & Material Hoists
17	Updated Main & Material Hoists
18	Updated Main & Material Hoists
19	Updated Main & Material Hoists
20	Updated Main & Material Hoists
21	Updated Main & Material Hoists
22	Updated Main & Material Hoists
23	Updated Main & Material Hoists
24	Updated Main & Material Hoists
25	Updated Main & Material Hoists
26	Updated Main & Material Hoists
27	Updated Main & Material Hoists
28	Updated Main & Material Hoists
29	Updated Main & Material Hoists
30	Updated Main & Material Hoists
31	Updated Main & Material Hoists
32	Updated Main & Material Hoists
33	Updated Main & Material Hoists
34	Updated Main & Material Hoists
35	Updated Main & Material Hoists
36	Updated Main & Material Hoists
37	Updated Main & Material Hoists
38	Updated Main & Material Hoists
39	Updated Main & Material Hoists
40	Updated Main & Material Hoists
41	Updated Main & Material Hoists
42	Updated Main & Material Hoists
43	Updated Main & Material Hoists
44	Updated Main & Material Hoists
45	Updated Main & Material Hoists
46	Updated Main & Material Hoists
47	Updated Main & Material Hoists
48	Updated Main & Material Hoists
49	Updated Main & Material Hoists
50	Updated Main & Material Hoists
51	Updated Main & Material Hoists
52	Updated Main & Material Hoists
53	Updated Main & Material Hoists
54	Updated Main & Material Hoists
55	Updated Main & Material Hoists
56	Updated Main & Material Hoists
57	Updated Main & Material Hoists
58	Updated Main & Material Hoists
59	Updated Main & Material Hoists
60	Updated Main & Material Hoists
61	Updated Main & Material Hoists
62	Updated Main & Material Hoists
63	Updated Main & Material Hoists
64	Updated Main & Material Hoists
65	Updated Main & Material Hoists
66	Updated Main & Material Hoists
67	Updated Main & Material Hoists
68	Updated Main & Material Hoists
69	Updated Main & Material Hoists
70	Updated Main & Material Hoists
71	Updated Main & Material Hoists
72	Updated Main & Material Hoists
73	Updated Main & Material Hoists
74	Updated Main & Material Hoists
75	Updated Main & Material Hoists
76	Updated Main & Material Hoists
77	Updated Main & Material Hoists
78	Updated Main & Material Hoists
79	Updated Main & Material Hoists
80	Updated Main & Material Hoists
81	Updated Main & Material Hoists
82	Updated Main & Material Hoists
83	Updated Main & Material Hoists
84	Updated Main & Material Hoists
85	Updated Main & Material Hoists
86	Updated Main & Material Hoists
87	Updated Main & Material Hoists
88	Updated Main & Material Hoists
89	Updated Main & Material Hoists
90	Updated Main & Material Hoists
91	Updated Main & Material Hoists
92	Updated Main & Material Hoists
93	Updated Main & Material Hoists
94	Updated Main & Material Hoists
95	Updated Main & Material Hoists
96	Updated Main & Material Hoists
97	Updated Main & Material Hoists
98	Updated Main & Material Hoists
99	Updated Main & Material Hoists
100	Updated Main & Material Hoists

Site Logistics

SCALE: N/A

SL-001



SECOND ST.

HOWARD ST.

FIRST ST.

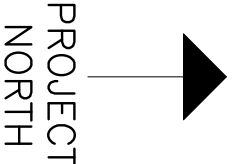
FREMONT ST.

BEALE ST.

Project Office
175 Beale St.

GENERAL NOTES

- No jobsite parking available.
- No loading or unloading of materials on city streets at any time. Violators will be cited and fined.
- All deliveries must be coordinated with Webcor/Obayashi.
- Storage of materials in Staging Areas must be coordinated with Webcor/Obayashi.
- All visitors must check in at the Webcor/Obayashi project office.
- Perimeter barrier location is for reference only. Each trade subcontractor shall identify the required perimeter barrier locations in the contract documents.
- Location, size, and width of access trestles and temporary bridges to be designed per the requirements in the construction documents. Actual Locations are subject to change.
- Personnel Material Hoists and stair locations are diagrammatic in nature and do not depict placement of hoists and stairs in the BSE package. Location to be coordinated with and approved by Webcor/Obayashi.
- For staging areas, locations, and availability, see the latest issued revision of spec 01 14 19 – Restriction of Use to Site Areas. Usage of these areas will be at the discretion and assigned by Webcor/Obayashi. Refer to Contract Documents.
- Location and configuration of gates are for reference only. For location and design refer to contract documents.



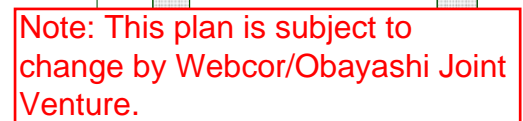
NOT FOR CONSTRUCTION

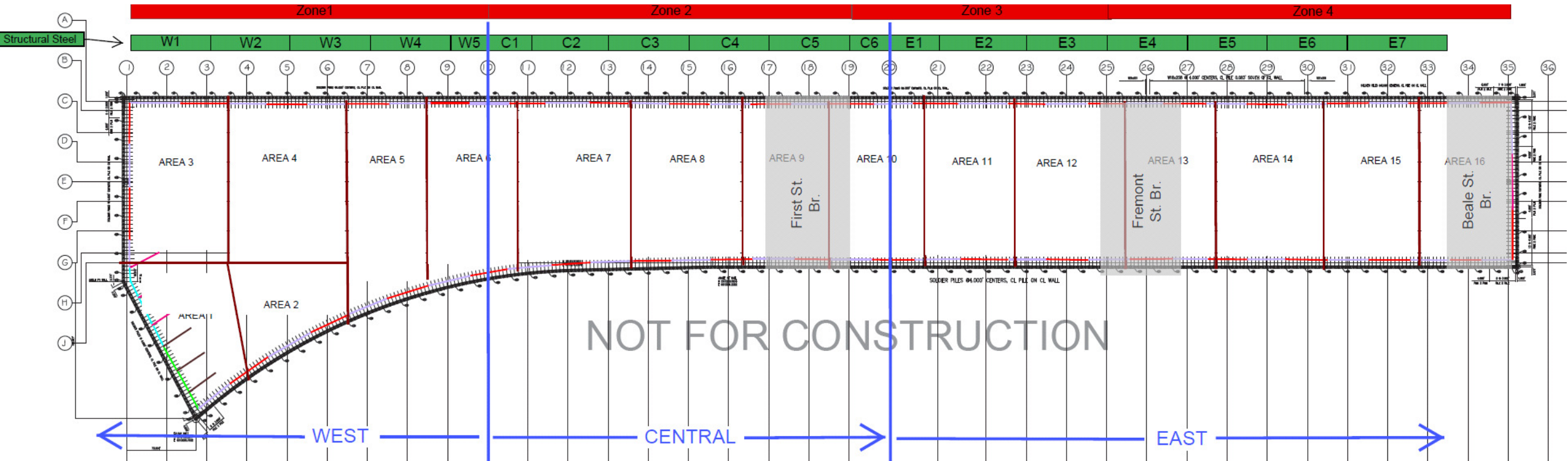
IMPORTANT NOTE:

THESE DRAWINGS ARE NOT INTENDED TO REPLACE THE DESIGN ARCHITECTURAL AND STRUCTURAL DRAWINGS. ALL DIMENSIONS, LOCATIONS, AND BE CHECKED ON-SITE AGAINST THE LATEST DESIGN AND DOCUMENTATIONS.

SHEET TITLE

SL - 002





NOT FOR CONSTRUCTION

IMPORTANT NOTE:
THESE DRAWINGS ARE NOT INTENDED TO REPLACE
THE DESIGN ARCHITECTURAL AND STRUCTURAL
DRAWINGS. ALL DIMENSIONS, LOCATIONS, AND
ELEVATIONS SHOWN ON THIS DRAWING ARE TO BE
CHECKED ON-SITE AGAINST THE LATEST DESIGN AND
DOCUMENTATIONS.

1751 HARBOR BAY PARKWAY
SUITE 200
ALAMEDA, CA 94502
Phone: (510) 748-1900
Fax: (510) 748-7829

JOB SITE
Address: 175 BEALE ST
SAN FRANCISCO, CA 94105
Phone: 415-578-5700
Fax: 510-748-7830

TRANSBAY TRANSIT CENTER

SAN FRANCISCO, CA

Revision Block

Rev. No.	Description	Date
01	Updated for TGD6 Below Grade Addendum 02	08-22-12
02	Updated for TGD7.1 #B	10-31-12
03	Updated for TGD7.1W, TGD7.1C & TGD7.1E	04-05-13

Drawn By: DH Date: 08-22-12
Checked By: SR Date: 08-22-12

Job No.: 30100

Construction Zones and Areas

SCALE: N/A

SL-025

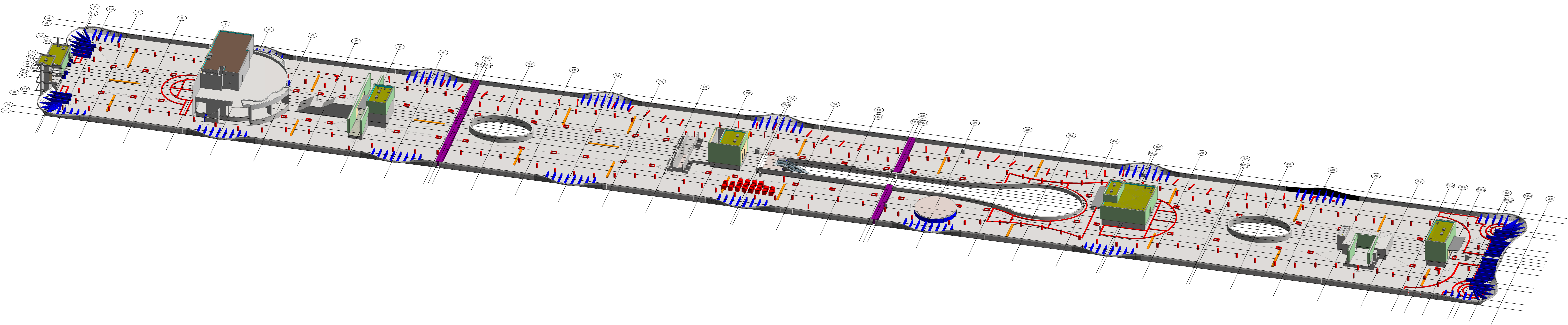
Transbay Transit Center
San Francisco, California

REV	DATE	DESCRIPTION
1	12/5/2013	PROJECT NO. X
2		MODEL FILE: X
3		DRAWN BY: Ty McConnell X
4		CHECKED BY: X
5		COPYRIGHT

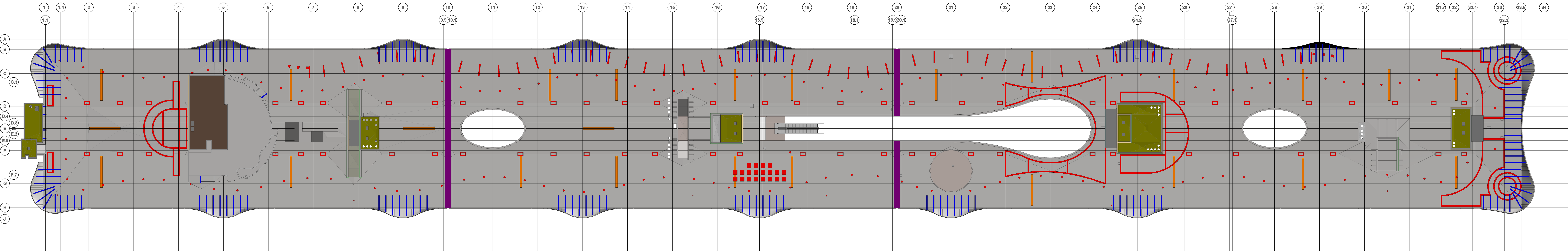
Rooftop
Obstructions
For Reference
Only

SL-027

Scale AS SHOWN



2 3D
SCALE: NTS



1 Plan
SCALE: 1" = 20'-0"



The size, quantity, and position of internal bracing elements is based on the Internal Bracing and Shoring Wall Drawings dated 09/13/2013.



**175 Beale Street
San Francisco, CA**

Transbay Transit Center

San Francisco, CA

R1	12/16/2013	
MARK	DATE	DESCRIPTION

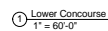
PROJECT NO:	X
MODEL FILE:	X
DRAWN BY:	X
CHKD BY:	X
COPYRIGHT	

SHEET TITLE

Personnel and Material Hoist Layout - Bracing

A101

Scale AS SHOWN

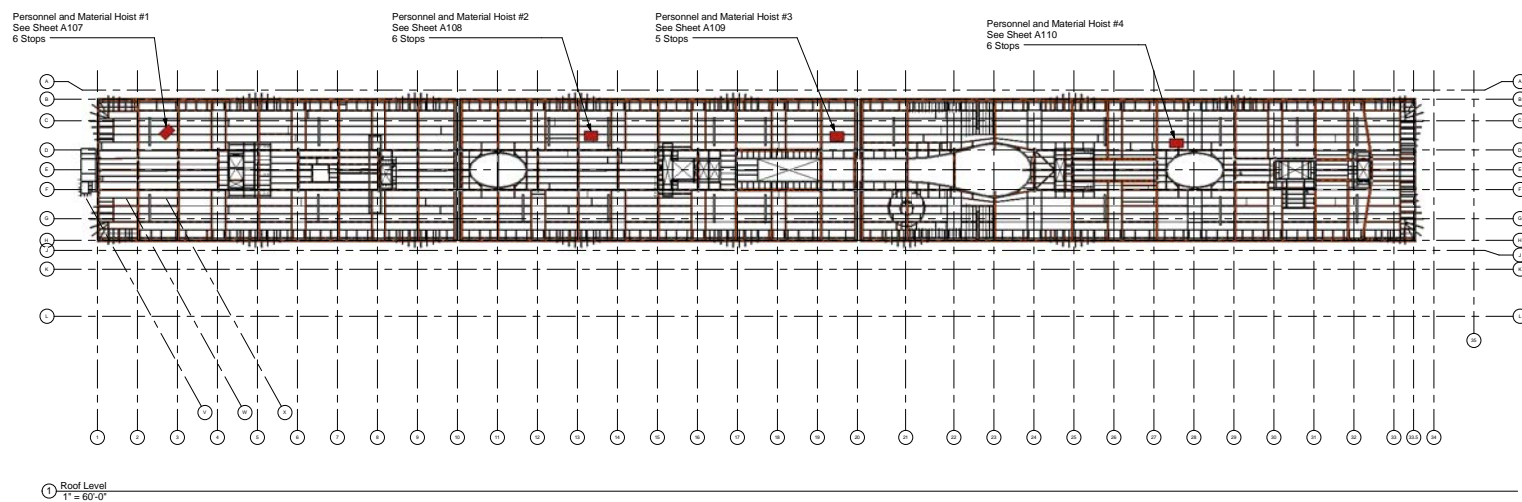


The size, quantity, and position of structural elements is based on the 100% Construction Documents dated 05/31/2013.

The size, quantity, and position of internal bracing elements is based on the Internal Bracing and Shoring Wall Drawings dated 09/13/2013.

Scale AS SHOWN

Scale	AS SHOWN
-------	----------



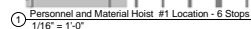
Transbay Transit Center

R1	12/16/2013	
MARK	DATE	DESCRIPTION

SHEET TITLE

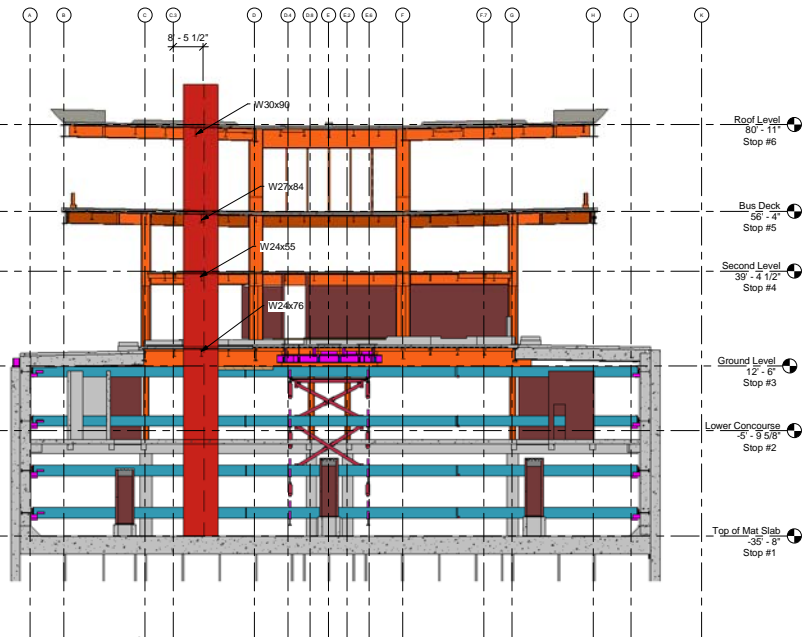
A106

Scale	AS SHOWN
-------	----------

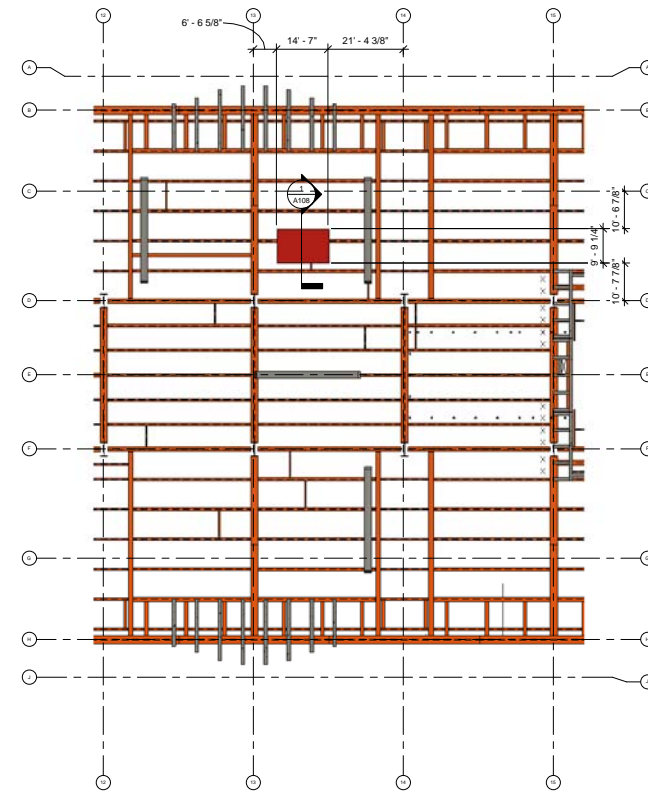


The size, quantity, and position of internal bracing elements is based on the Internal Bracing and Shoring Wall Drawings dated 09/13/2013.





① Personnel and Material Hoist #2 Location - 6 Slops
1/16" = 1'-0"



② Personnel and Material Hoist #2 Detail - Roof Level
1/16" = 1'-0"

NOTE:
The size, quantity, and position of structural elements in based on the 100% Construction Documents dated 05/31/2013.
The size, quantity, and position of internal bracing elements is based on the Internal Bracing and Shoring Wall Drawings dated 09/13/2013.

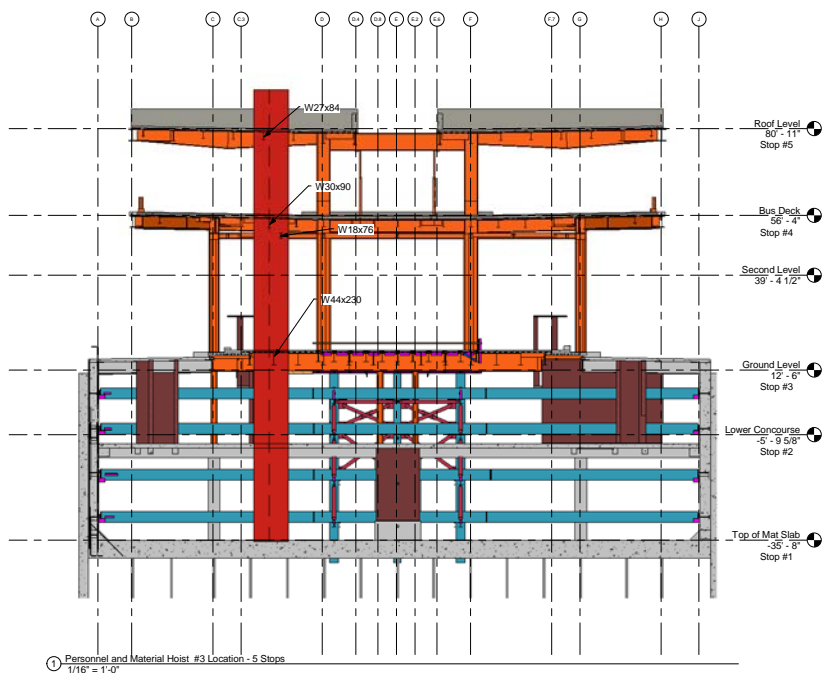
**175 Beale Street
San Francisco, CA**

Transbay Transit Center San Francisco, CA

PROJECT NO.	X
MODEL FILE:	X
DRAWN BY:	X
CHKD BY:	X
COPYRIGHT	

MARK	DATE	DESCRIPTION
R1	12/16/2013	

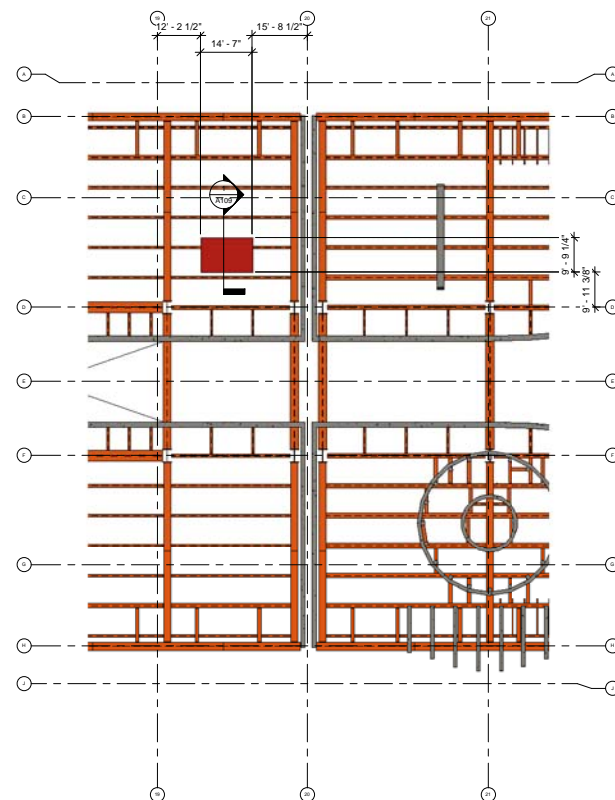
SHEET TITLE	
Personnel and Material Hoist #2 Location	
A108	
Scale	AS SHOWN



NOTE:

The size, quantity, and position of structural elements in based on the 100% Construction Documents dated 05/31/2013.

The size, quantity, and position of internal bracing elements is based on the Internal Bracing and Shoring Wall Drawings dated 09/13/2013.



175 Beale Street
San Francisco, CA

Transbay Transit Center

San Francisco, CA

MARK	DATE	DESCRIPTION
R1	12/16/2013	

PROJECT NO.	X
MODEL FILE	X
DRAWN BY:	X
CHKD BY:	X
COPYRIGHT	

SHEET TITLE

Personnel
and Material
Hoist #3
Location

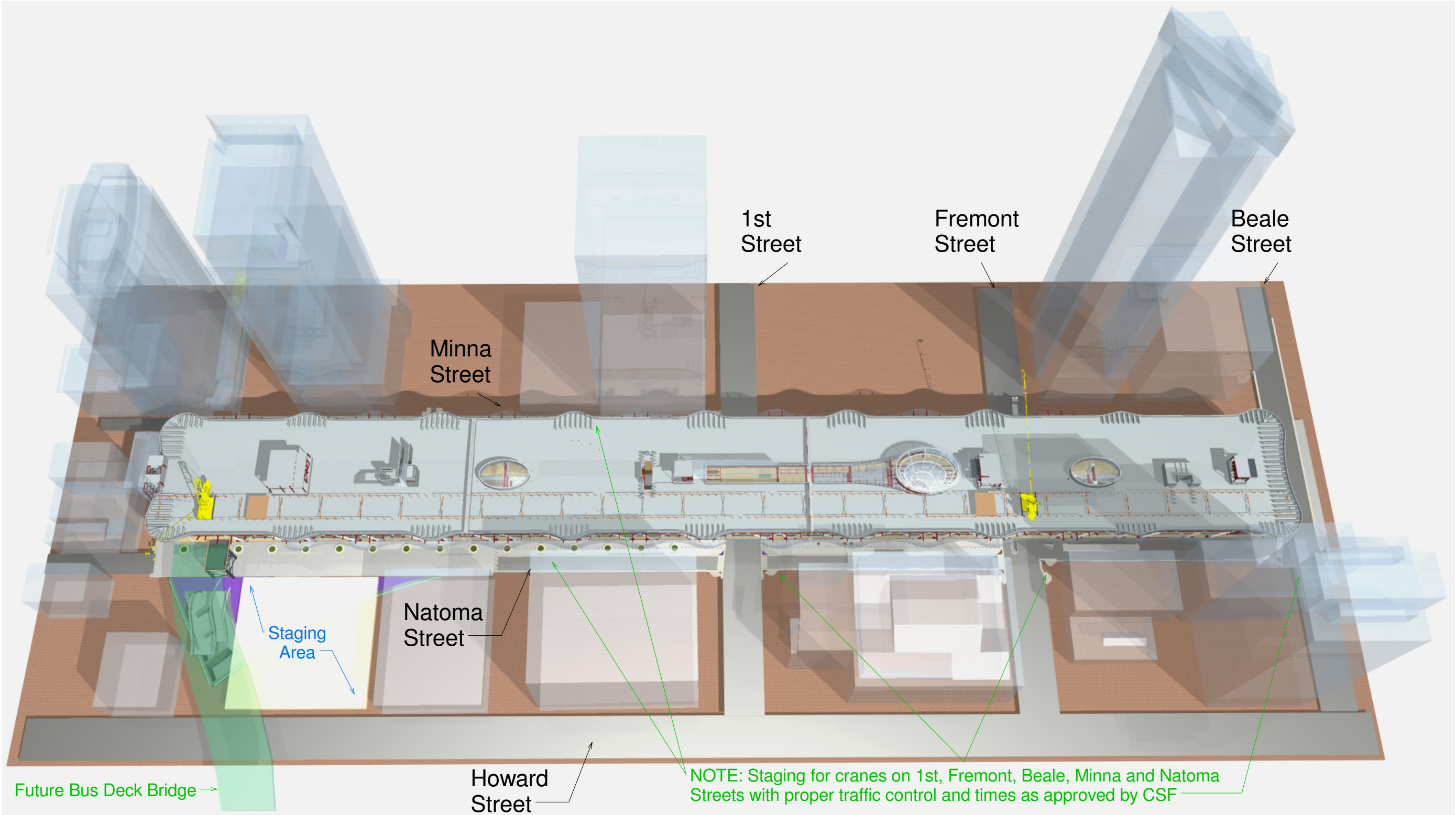
A109

Scale AS SHOWN



The size, quantity, and position of internal bracing elements is based on the Internal Bracing and Shoring Wall Drawings dated 09/13/2013.





Transbay Transit Center

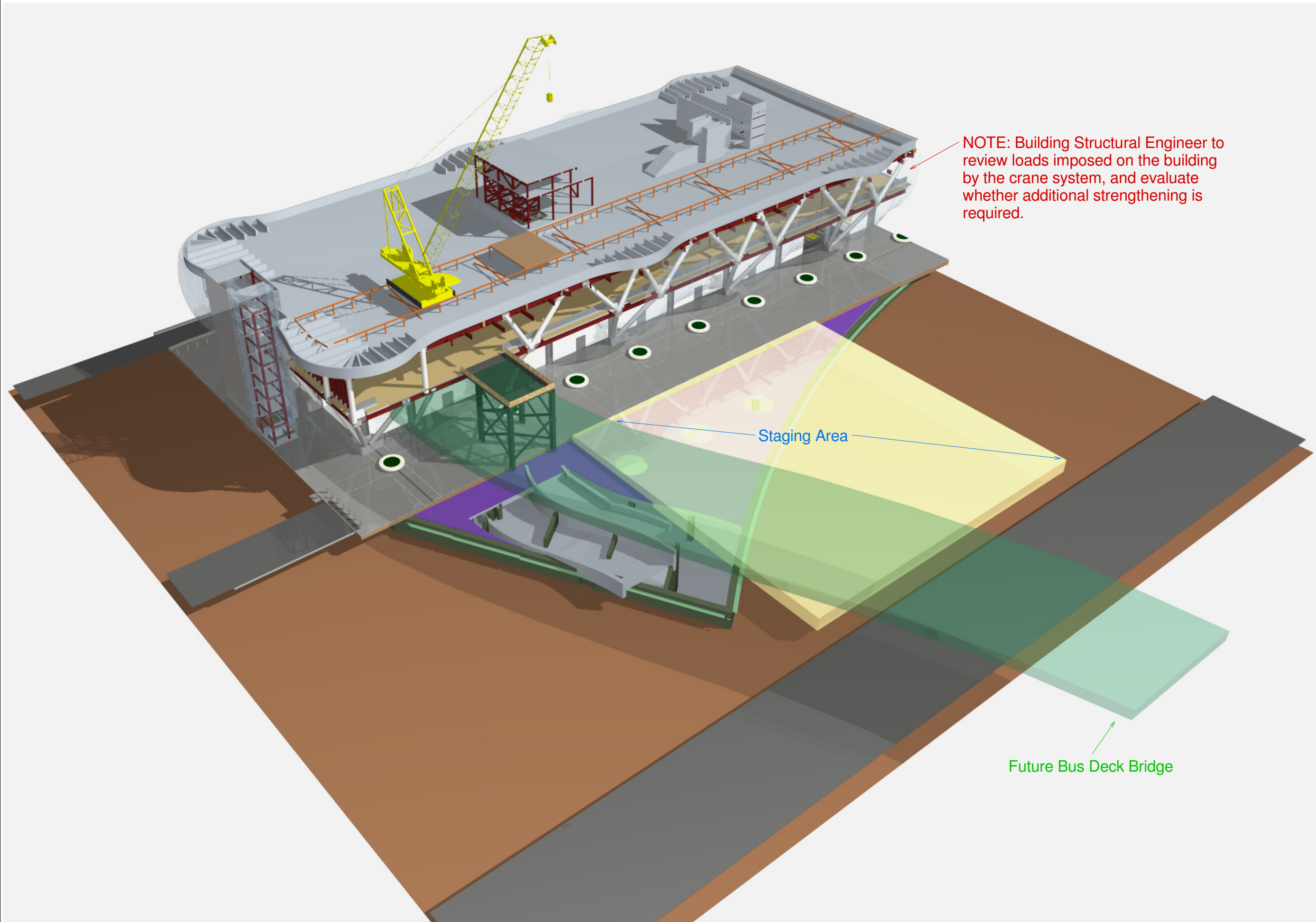
San Francisco, California

MARK	DATE	DESCRIPTION

PROJECT NO:	X
MODEL FILE:	X
DRAWN BY:	Matt Zwetzig
CHK'D BY:	X
COPYRIGHT	

SHEET TITLE

Logistics
Aerial View



Transbay Transit Center

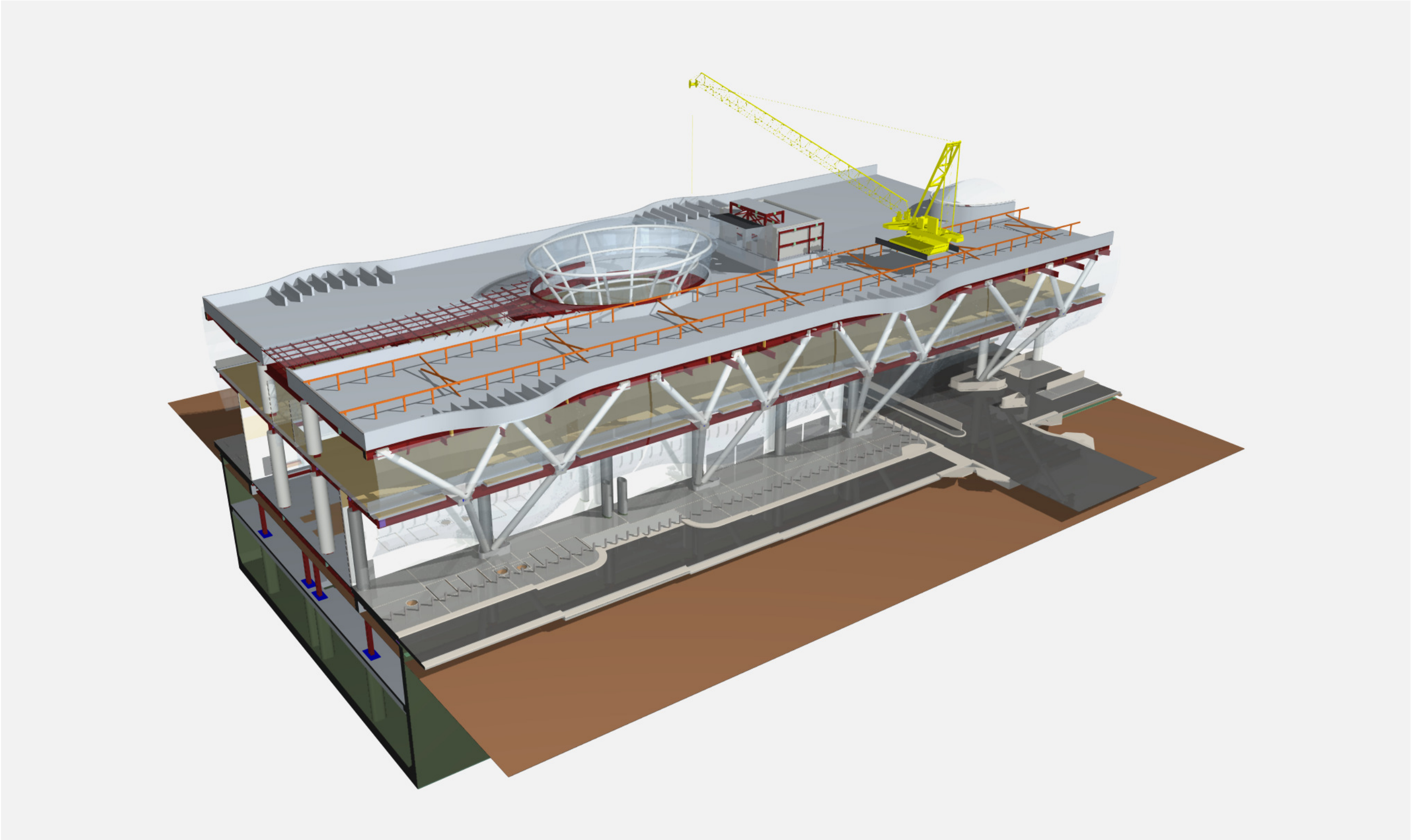
San Francisco, California

MARK	DATE	DESCRIPTION

PROJECT NO:	X
MODEL FILE:	X
DRAWN BY:	Matt Zwetzig
CHKD BY:	X
COPYRIGHT	

SHEET TITLE
3D Section

X-03
Scale AS SHOWN



207 King Street, Suite 300
San Francisco, California 94107

Transbay Transit Center

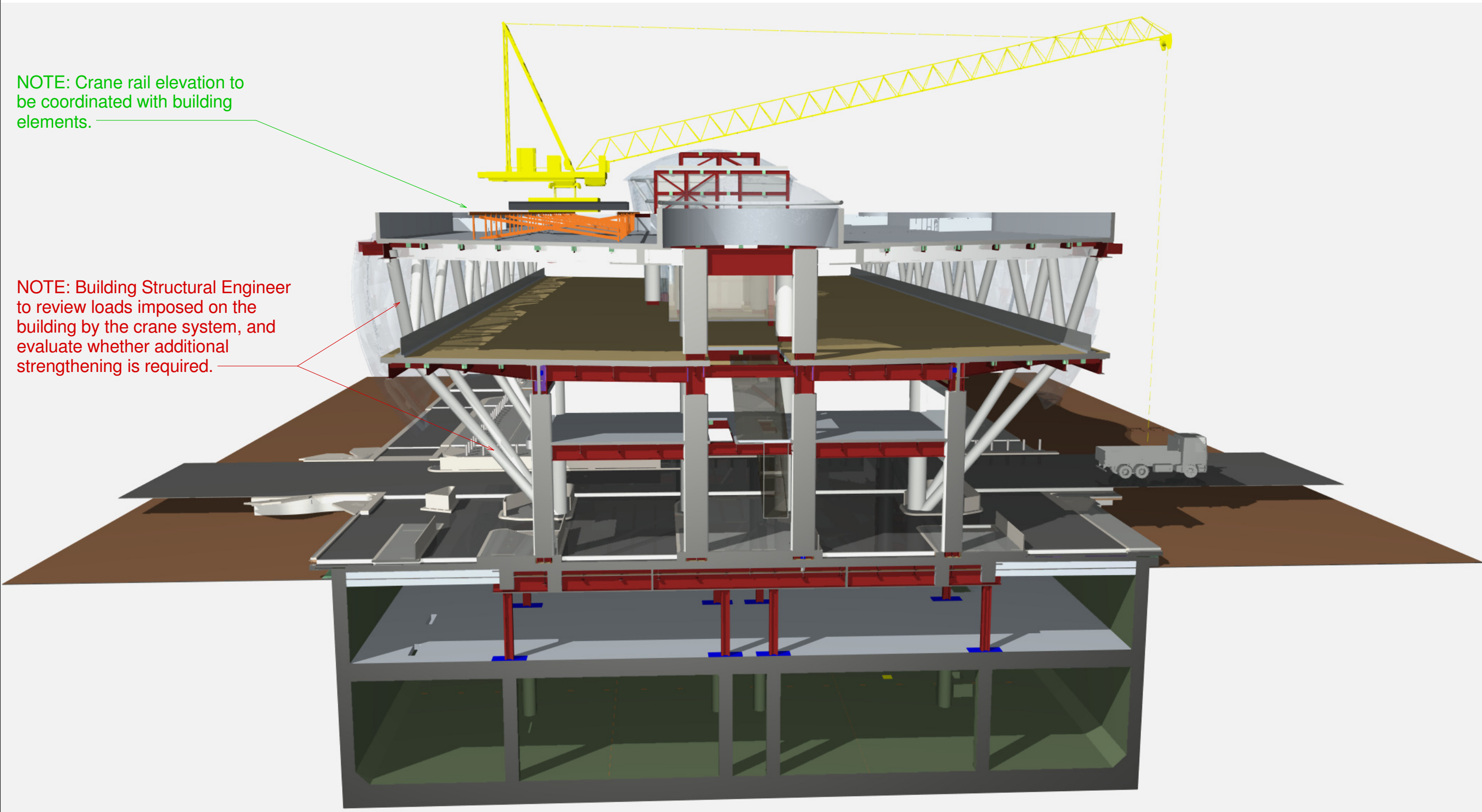
San Francisco, California

MARK	DATE	DESCRIPTION

PROJECT NO:	X
MODEL FILE:	X
DRAWN BY:	Matt Zwetzig
CHKD BY:	X
COPYRIGHT	

SHEET TITLE
3D Section

X-04
Scale AS SHOWN



NOTE: Crane rail elevation to be coordinated with building elements.

NOTE: Building Structural Engineer to review loads imposed on the building by the crane system, and evaluate whether additional strengthening is required.

Transbay Transit Center

San Francisco, California

MARK	DATE	DESCRIPTION

PROJECT NO:	X
MODEL FILE:	X
DRAWN BY:	Matt Zwetzig
CHK'D BY:	X
COPYRIGHT	

SHEET TITLE

3D Section
West Facing

X-05

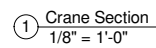


San Francisco, California

PROJECT NO:	X
MODEL FILE:	X
DRAWN BY:	Matt Zwetzig
CHK'D BY:	X
COPYRIGHT	

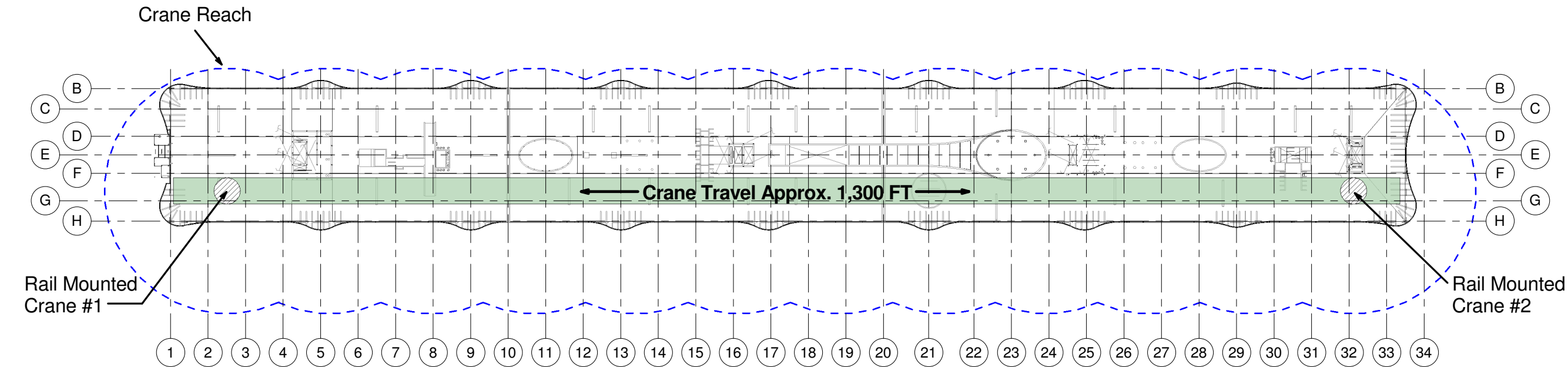
Crane Section

Scale AS SHOWN



Transbay Transit Center

San Francisco, California



① Roof Park Level T/Steel
1/64" = 1'-0"

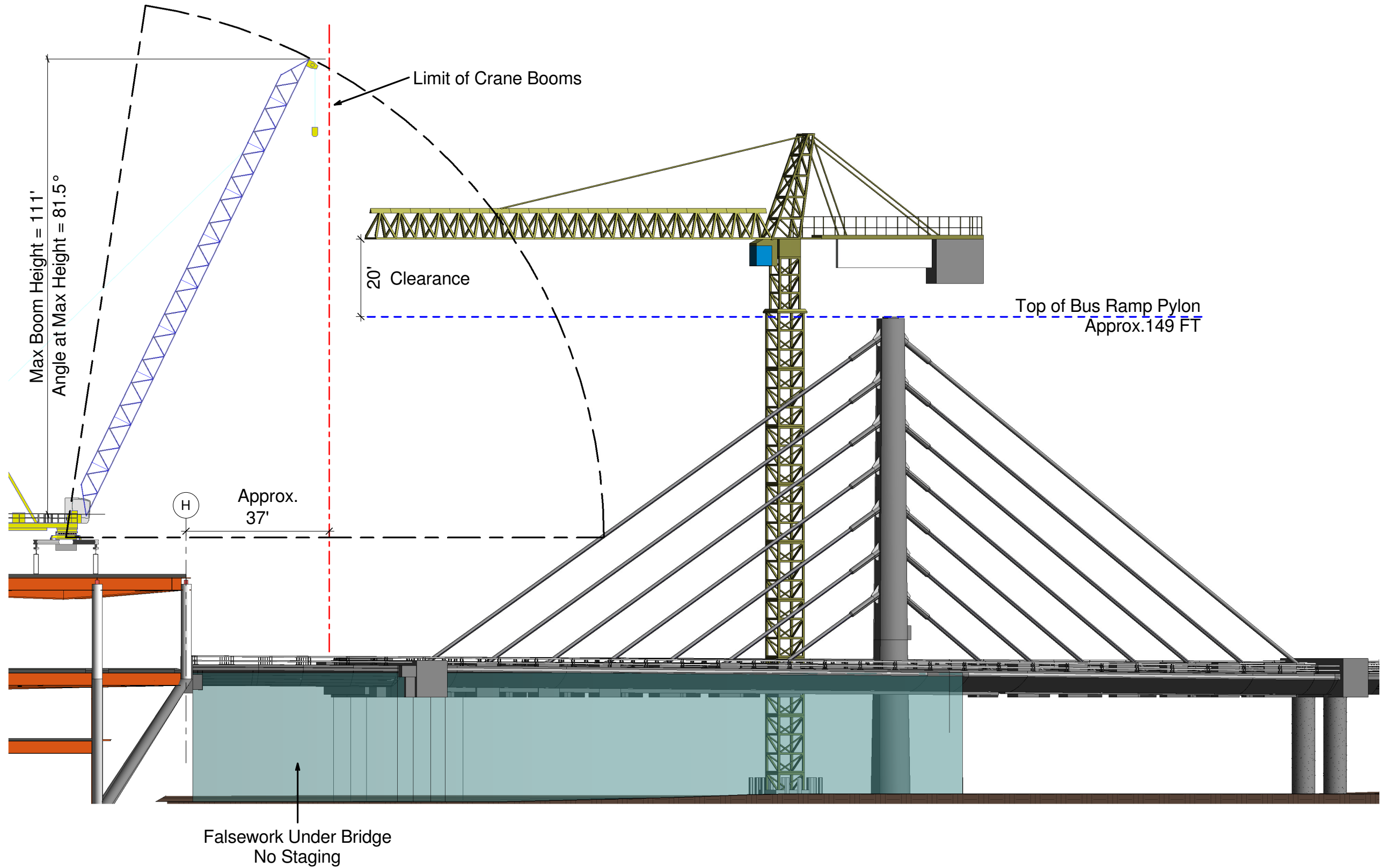
MARK	DATE	DESCRIPTION

PROJECT NO:	X
MODEL FILE:	X
DRAWN BY:	Matt Zwetzig
CHK'D BY:	X
COPYRIGHT	

SHEET TITLE
Roof Rail-Mounted Cranes

X-07
Scale AS SHOWN

- Notes:
- All distances are approximate
 - Tower Crane and Rooftop Crane configuration subject to change



① Tower Crane & Bus Ramp Pylon
1 : 160

Transbay Transit Center
San Francisco, California

1	4/18/13	Bridge Logistics
2	4/23/13	Update
MARK	DATE	DESCRIPTION

PROJECT NO:	X
MODEL FILE:	X
DRAWN BY:	Matt Zwetzig / Blair Hinojosa
CHK'D BY:	X
COPYRIGHT	

SHEET TITLE

Rooftop
Crane and
Tower Crane
Logistics

X-15

Scale AS SHOWN

Transbay Transit Center

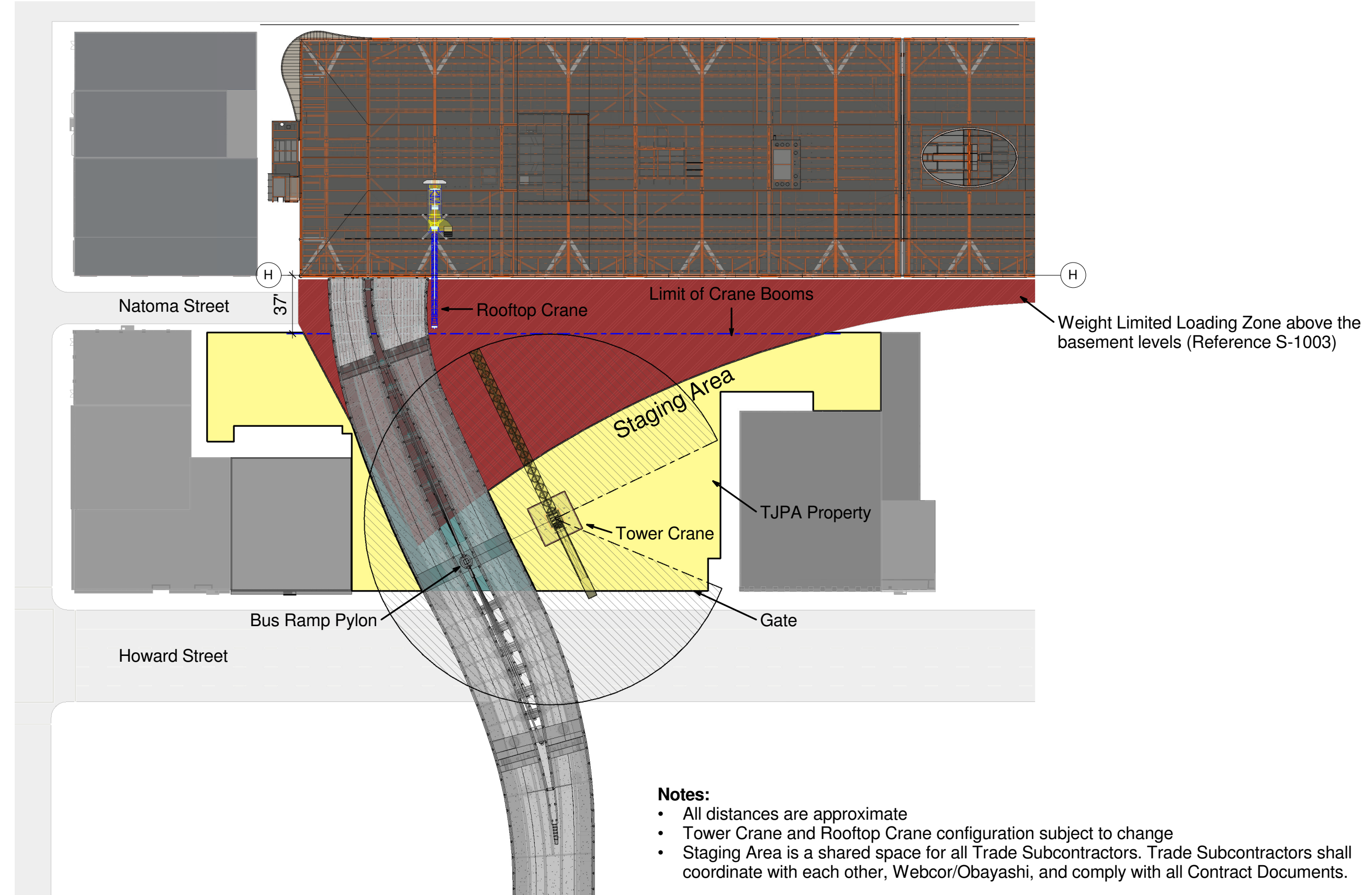
San Francisco, California

1	4/18/13	Bridge Logistics
2	4/23/13	Update
MARK	DATE	DESCRIPTION

PROJECT NO:	X
MODEL FILE:	X
DRAWN BY:	Matt Zwetzig / Blair Hinojosa
CHK'D BY:	X
COPYRIGHT	

SHEET TITLE
Natoma - Howard St. Area Logistics

X-16





207 King Street, Suite 300
San Francisco, California 94107

Transbay Transit Center

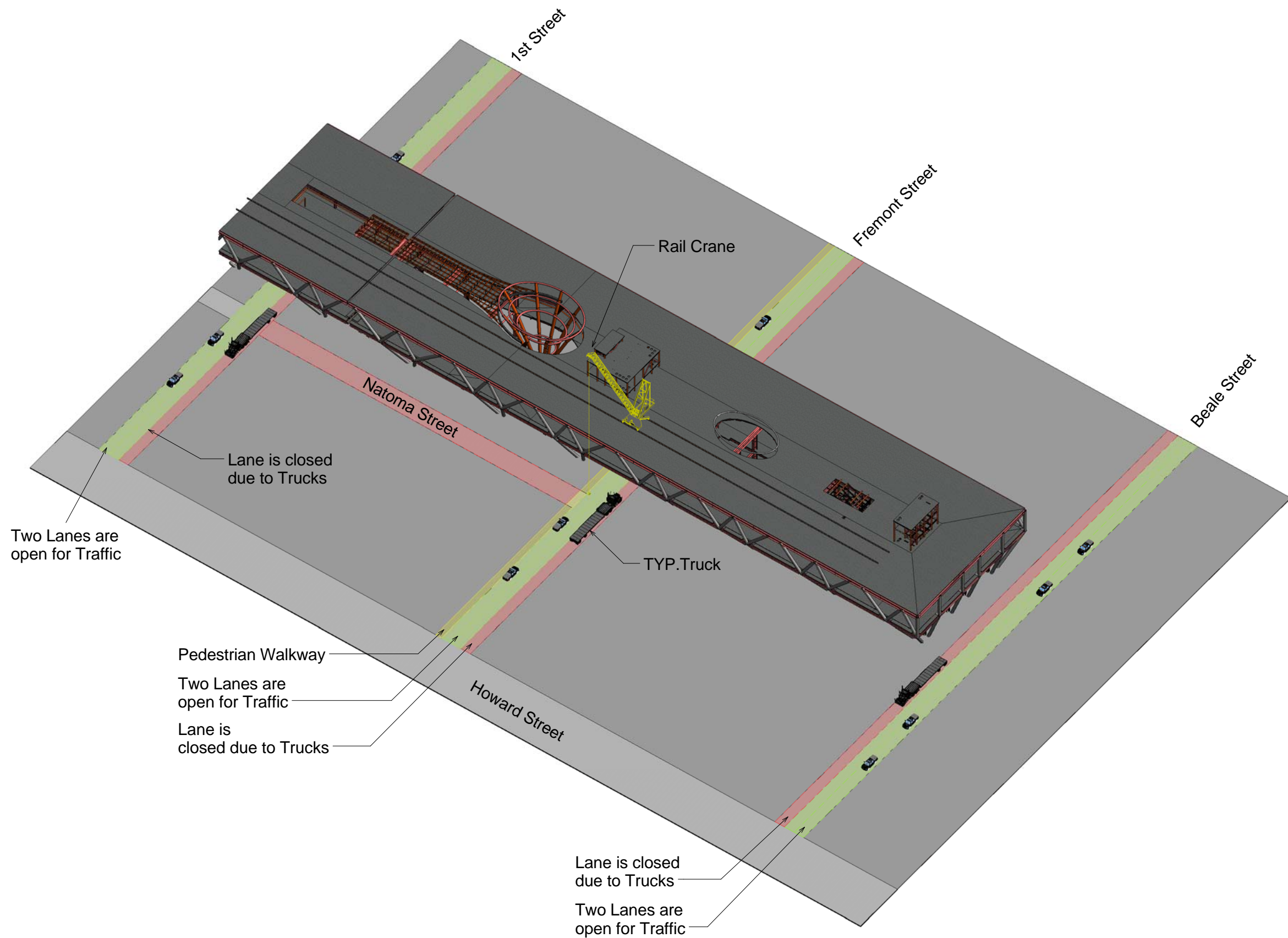
San Francisco, California

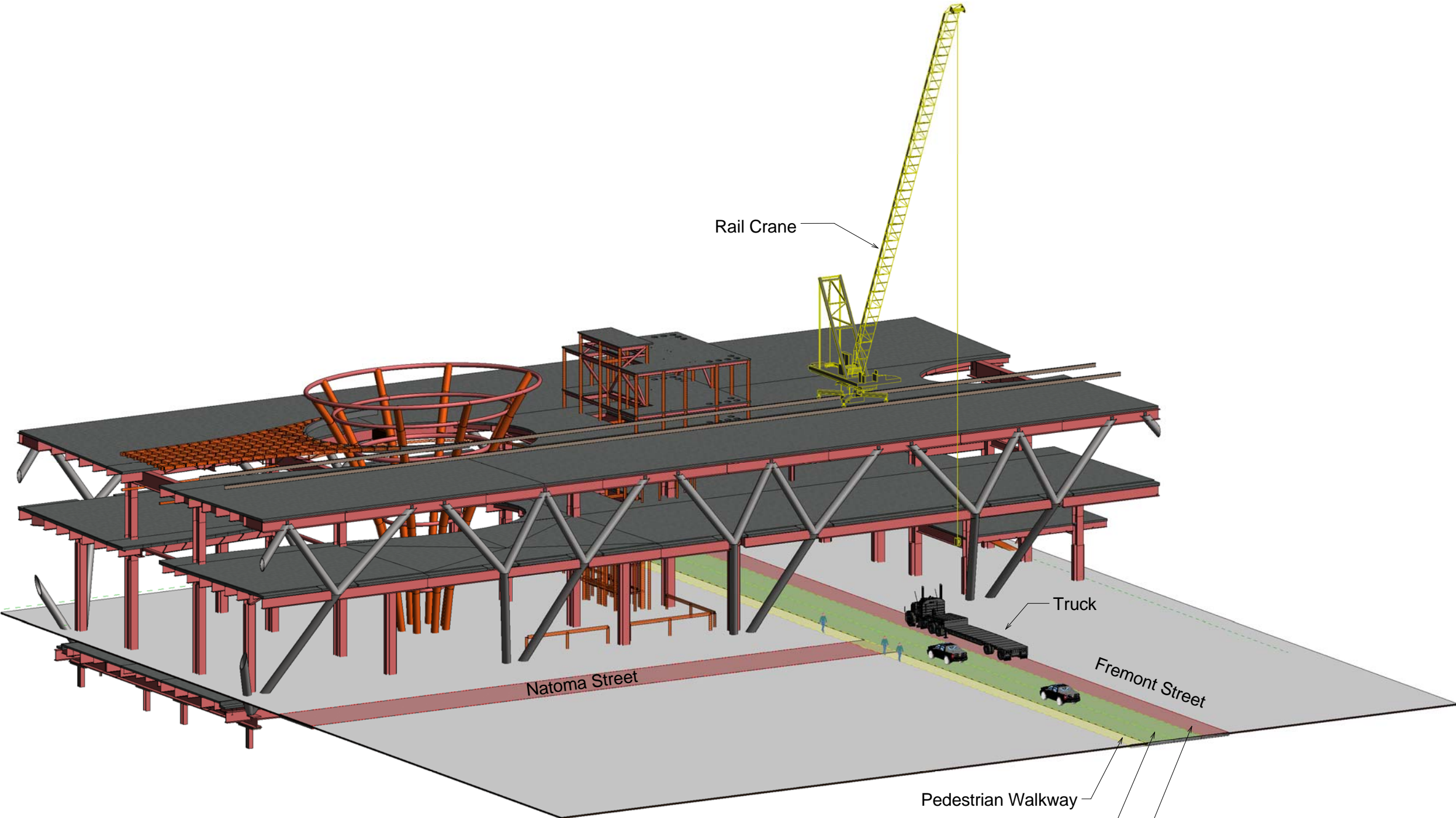
1	4/18/13	Bridge Logistics
2	4/23/13	Update
3	12/20/13	Update
MARK	DATE	DESCRIPTION

PROJECT NO:	X
MODEL FILE:	X
DRAWN BY:	Matt Zwetzig / Blair Hinojosa / Ty M.
CHKD BY:	X
COPYRIGHT	

SHEET TITLE
Rail Crane Logistics

X-17
Scale AS SHOWN





207 King Street, Suite 300
San Francisco, California 94107

Transbay Transit Center

San Francisco, California

1	4/18/13	Bridge Logistics
2	4/23/13	Update
3	12/20/13	Update

MARK	DATE	DESCRIPTION
------	------	-------------

PROJECT NO:	X
MODEL FILE:	X
DRAWN BY:	Matt Zwetzig / Blair Hinojosa / Ty M.
CHKD BY:	X
COPYRIGHT	

SHEET TITLE

Rail Crane
Logistics 3D
Section

X-18

Scale AS SHOWN