



100% Construction Documents Update

September 10, 2013

Transbay Transit Center

TJPA









BUILDING SECTION



GRAND HALL





GRAND HALL



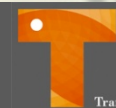


EAST END OF GRAND HALL LOOKING EAST





WEST END OF GRAND HALL





WEST END OF GRAND HALL LOOKING EAST







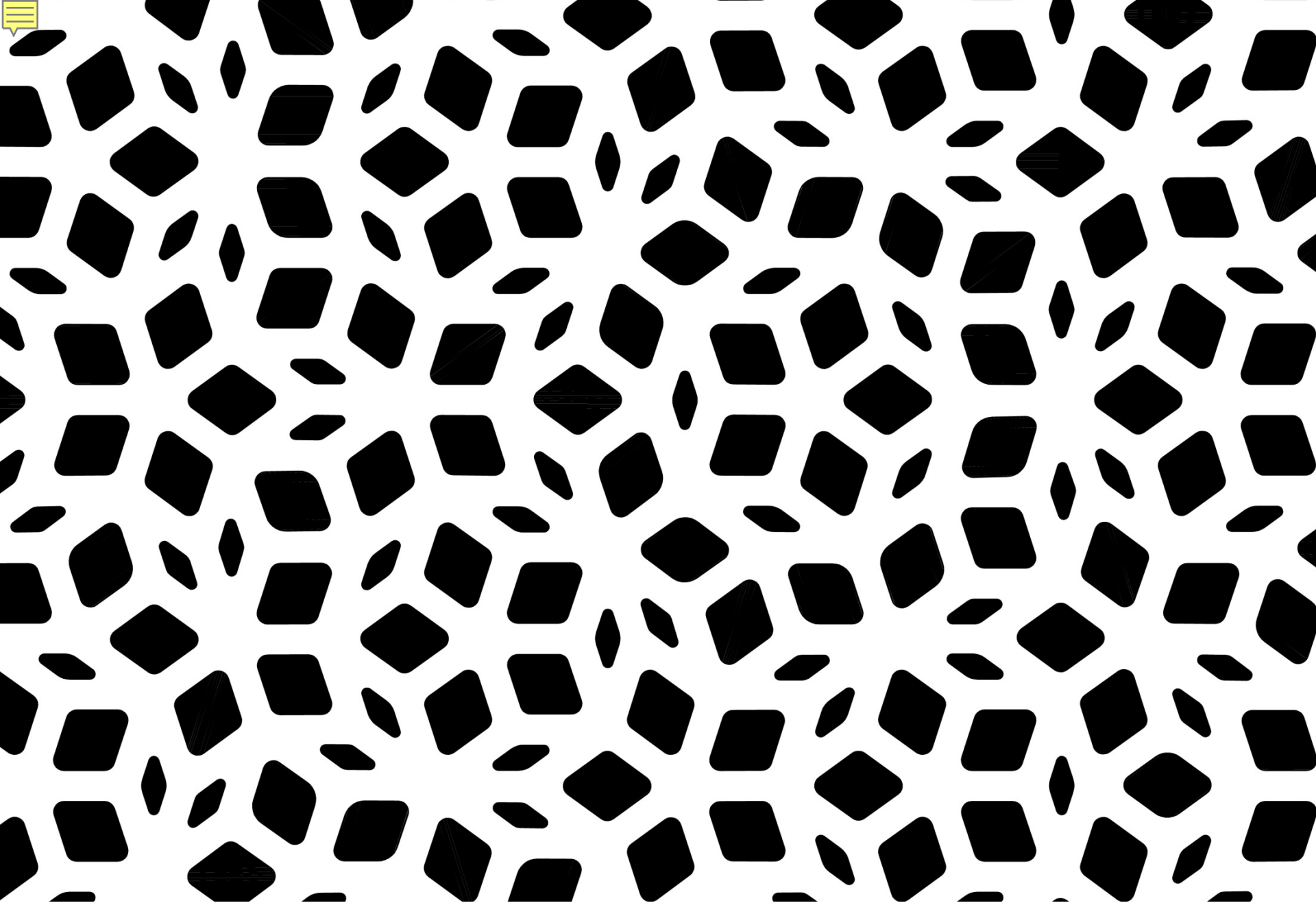


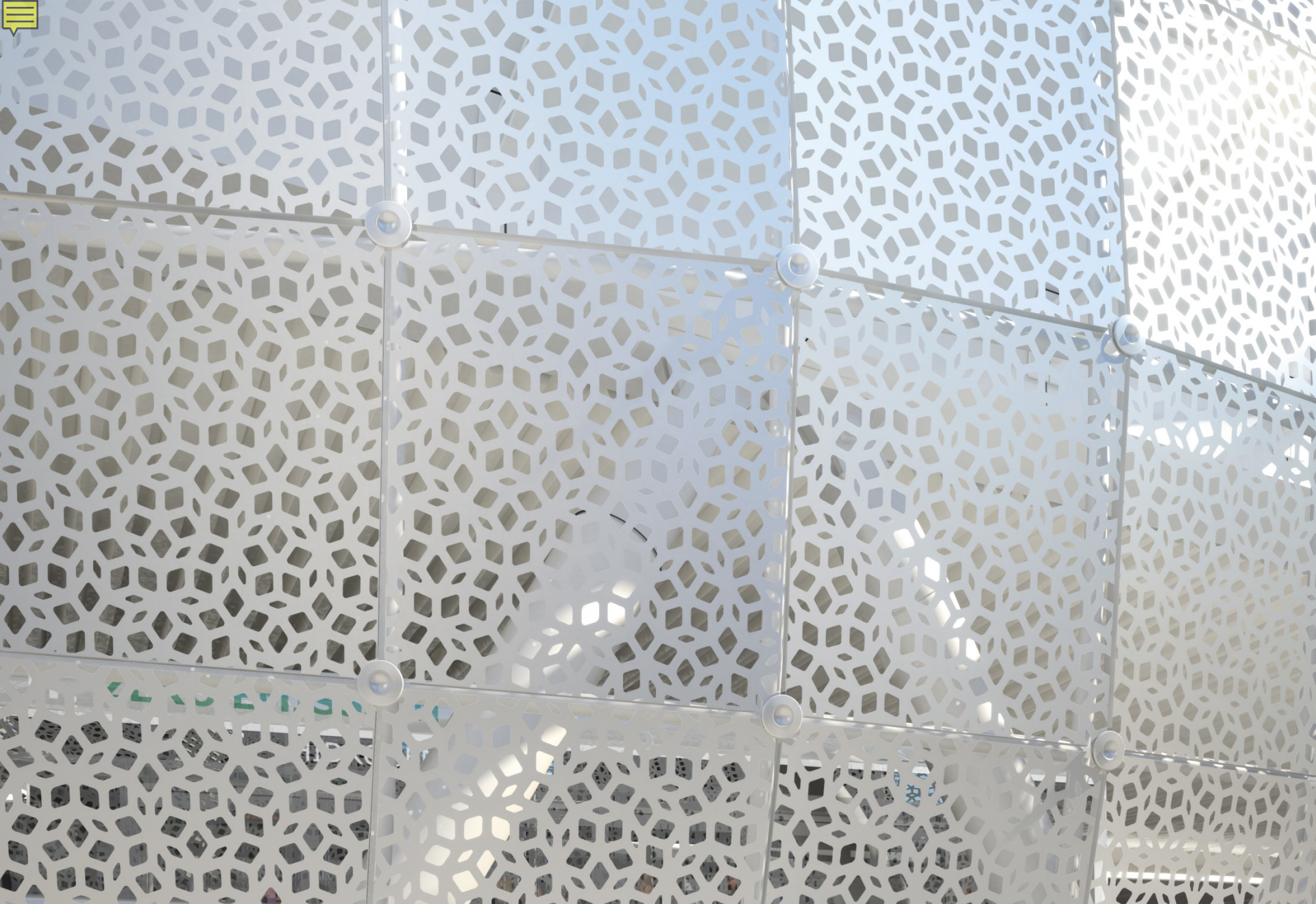
12 : 03 PM

12 : 03 PM

12 : 03 PM







METAL PANEL AWNING DETAILED VIEW





NATOMA STREET VIEW – METAL AWNING





BEALE STREET VIEW





FIRST STREET VIEW





MISSION SQUARE VIEW





FIRST AND MINNA STREET VIEW





NATOMA STREET VIEW – METAL PANEL AWNING LIGHTING 1





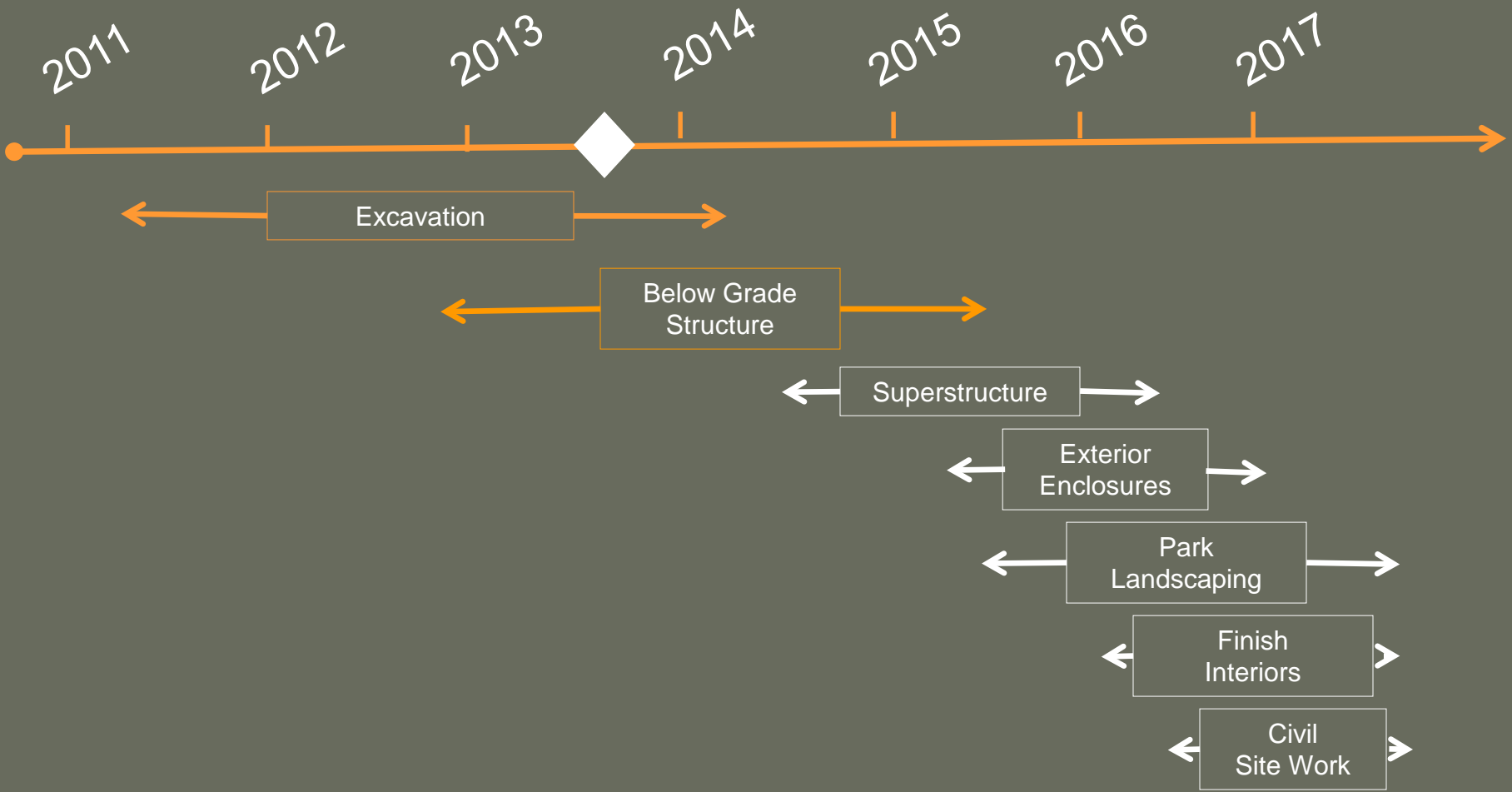
NATOMA STREET VIEW – METAL PANEL AWNING LIGHTING 2





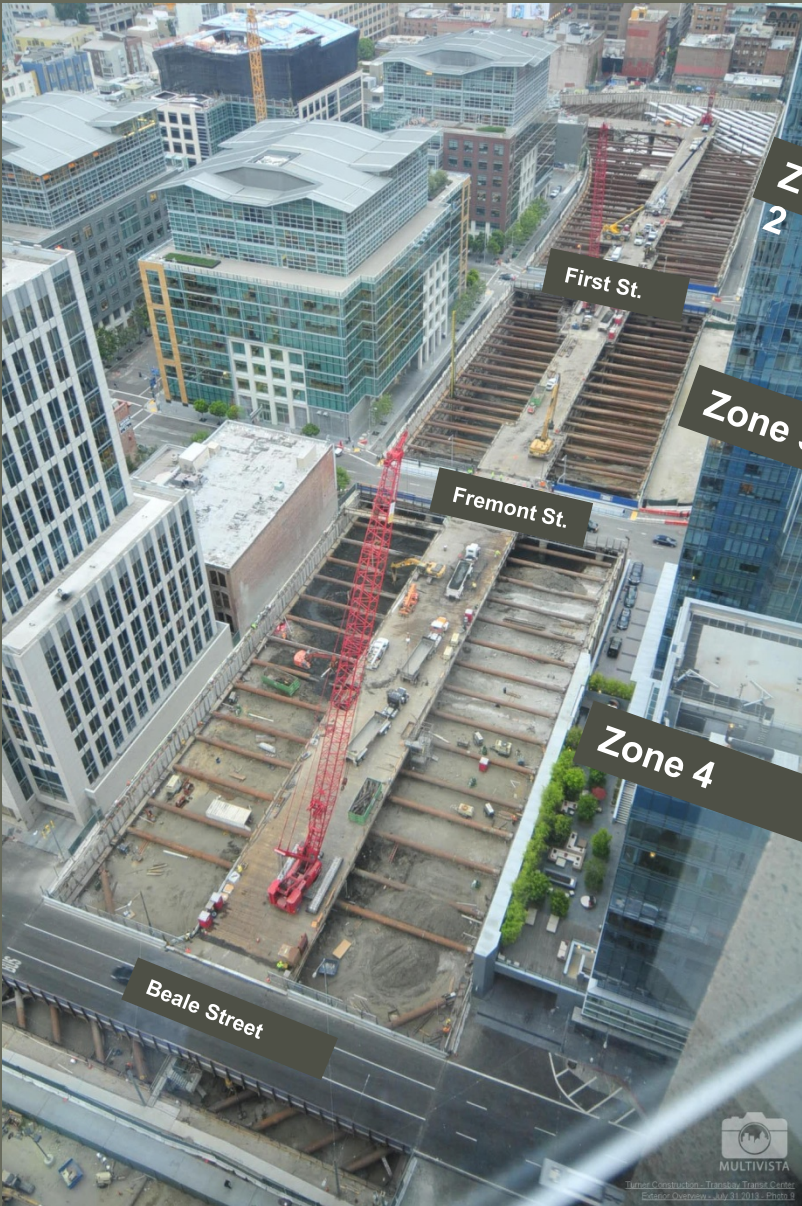


Construction Timeline Summary





Overall Site



Transit Construction - Transbay Transit Center
Editor: K. Westby - July 31, 2018 - Photo 3



Transbay Transit Center

Access Trestle and Bracing





Excavation, Removal of Timber Piles and Bracing





Traffic Bridges





Micropiles





Grounding and Geothermal Systems



Subgrade and Mud slab





Waterproofing Installation





Protection Slab



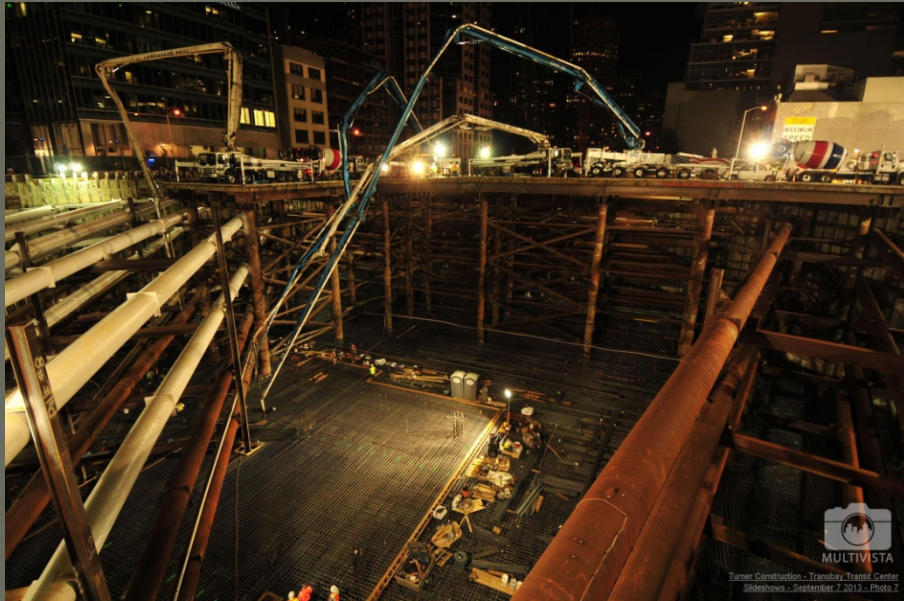


Mat Foundation Slab Preparation





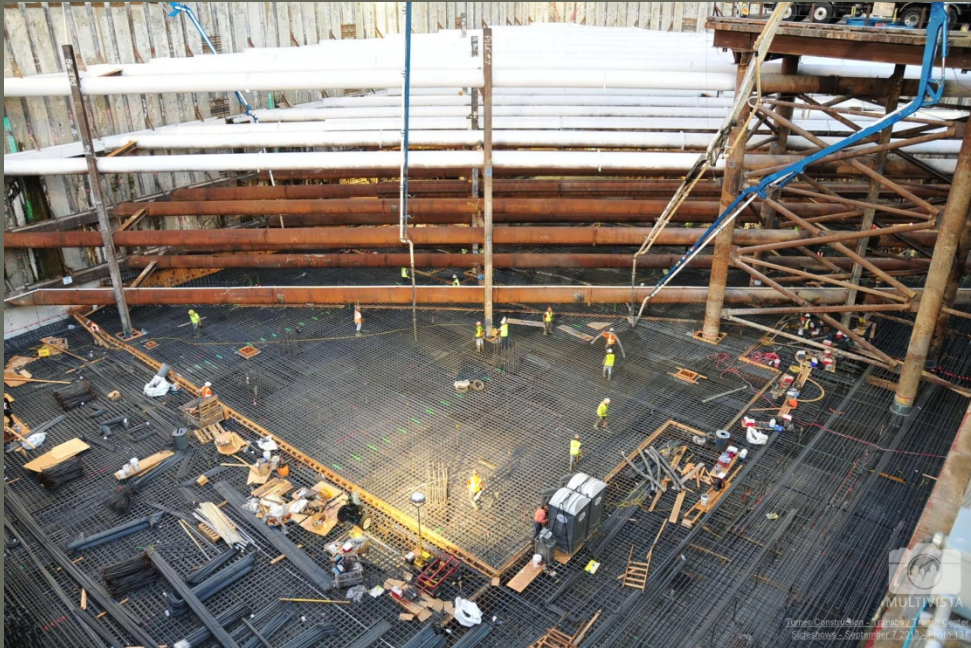
Mat Foundation Slab Placement – Zone 1





Transbay Transit Center

Mat Foundation Slab Placement – Zone 1



MULTIVISTA
Tanner Construction - Transbay Transit Center
Fall 2013 - September 2, 2014 - Photo 101

MULTIVISTA
Tanner Construction - Transbay Transit Center
Fall 2013 - September 2, 2014 - Photo 101

CONTACT INFORMATION

Transbay Joint Powers Authority

201 Mission Street, Suite 2100

San Francisco, CA 94105

(415) 597-4620

www.TransbayCenter.org

info@transbaycenter.org

