



PUBLIC SCOPING MEETING Supplemental EIS/EIR

Tuesday, May 14, 2013

5:00-7:30 p.m.

201 Mission Street, #2100

Transbay Transit Center

TJPA





Transbay Transit Center

WELCOME

- Sign in at table near entrance
- To provide verbal comment, fill out a speaker card
- To comment in writing use comment sheet provided
 - Drop off at the end of the meeting
 - Mail or fax later
- Please hold questions and comments until the end of the presentation



Transbay Transit Center

AGENDA

- Purpose of Meeting
- Project Overview
- Supplemental EIS/EIR
- Public Comments



Transbay Transit Center

PURPOSE OF MEETING

To receive agency and public input on the scope of Supplemental Environmental Impact Statement (EIS) / Environmental Impact Report (EIR) for the Transbay Transit Center Program



Transbay Transit Center

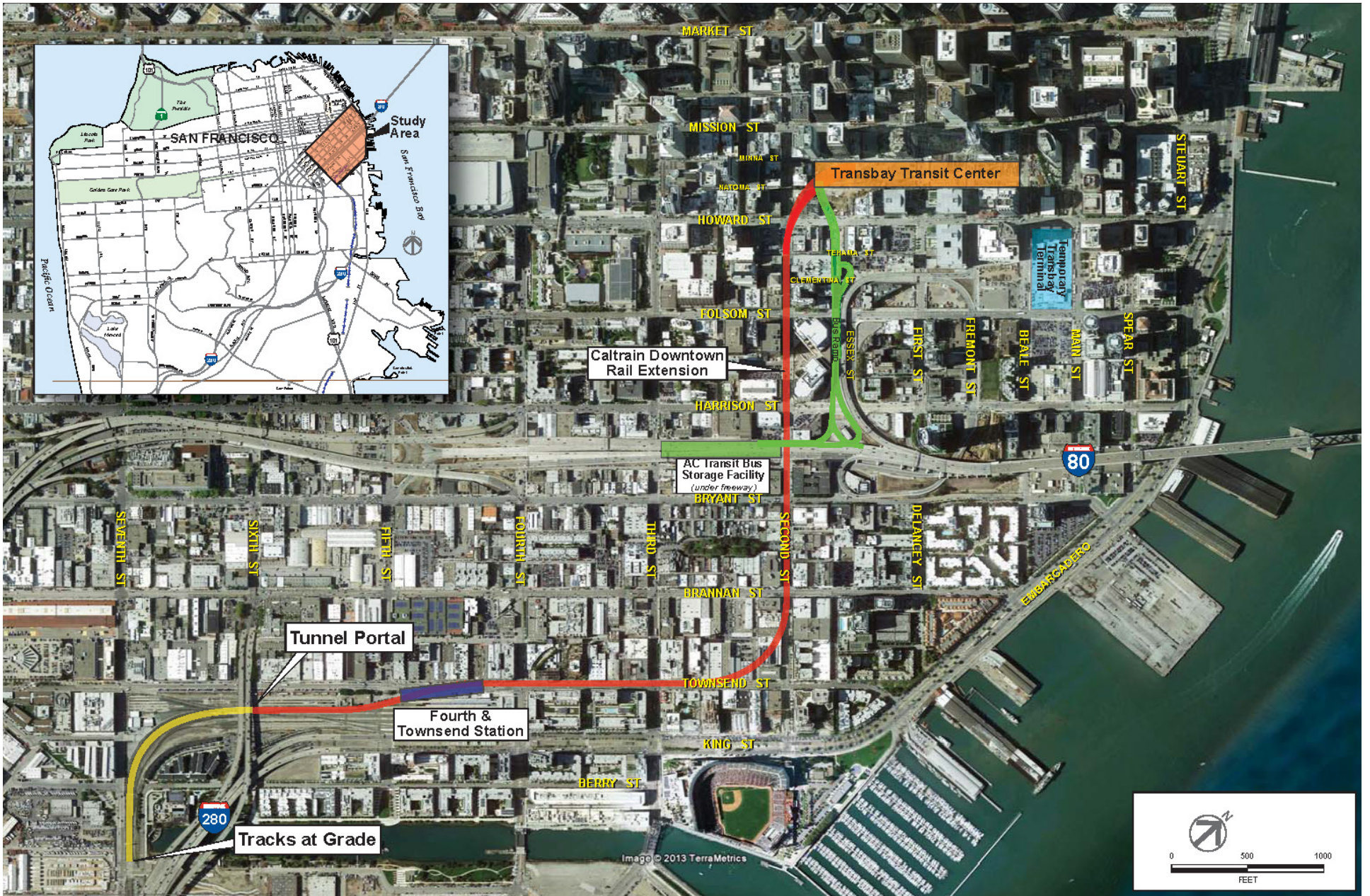
PROJECT OVERVIEW



Transbay Transit Center

Transbay Joint Powers Authority

- 1999 Proposition H: Extend Caltrain to a new or rebuilt regional transit station on the site of the Transbay Terminal
- Transbay Joint Powers Authority created under State law in April 2001
 - Charged with design, construction and operation of a new Transbay Terminal and associated facilities
- Member agencies
 - City & County of San Francisco
 - Alameda-Contra Costa Transit District
 - Peninsula Corridor Joint Powers Board
 - City & County of San Francisco
 - San Mateo County Transit/Caltrain
 - Santa Clara Valley Transportation Authority

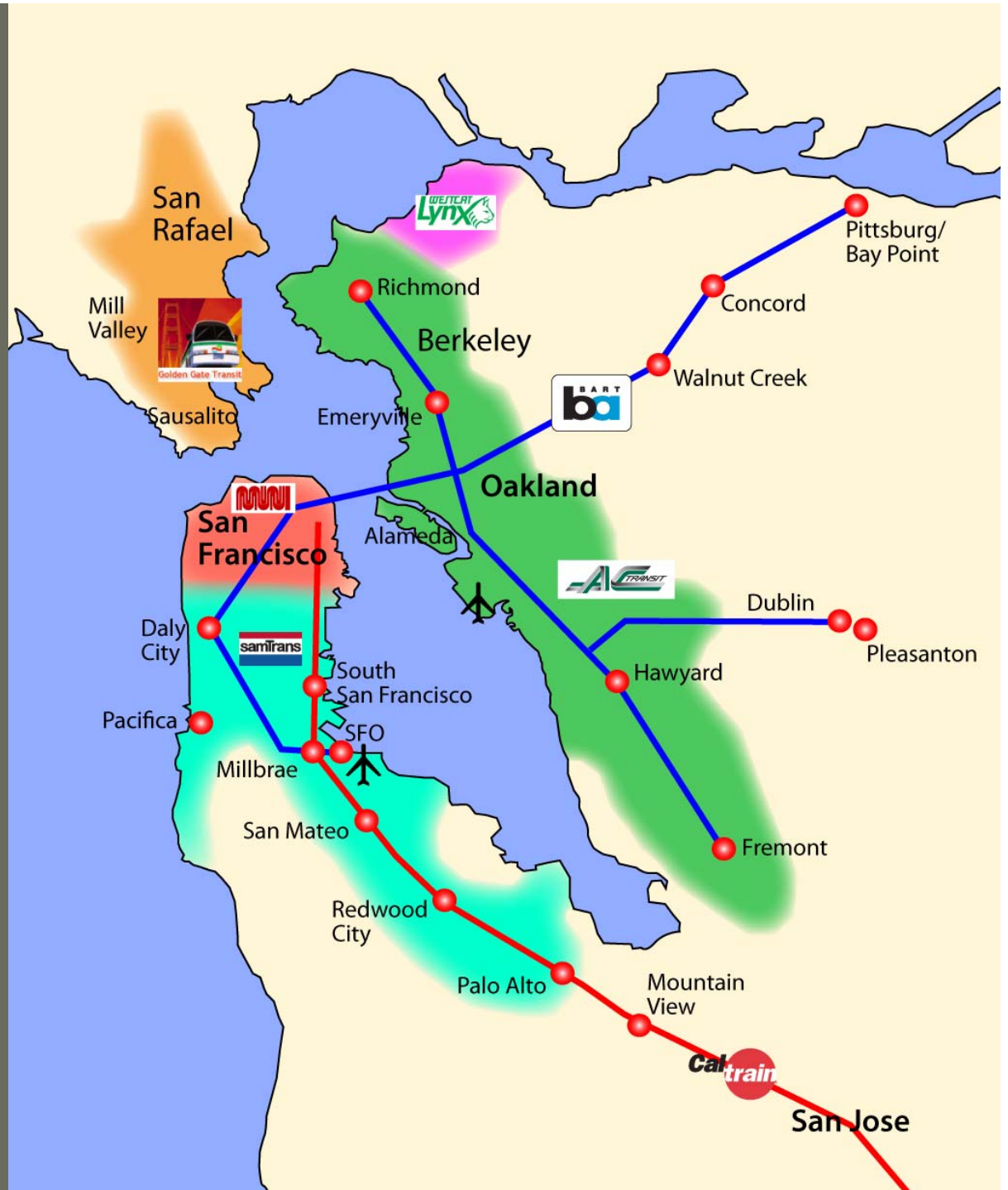


Approved Phases 1 and 2



Transbay Transit Center

Transbay Service Providers





PARK LEVEL

BUS DECK LEVEL

GROUND LEVEL

GRAND HALL

MISSION SQUARE

LOWER CONCOURSE LEVEL

RETAIL

PUBLIC CONCOURSE & WAITING AREA

RETAIL

TRAIN PLATFORM LEVEL

**CHSR
PLATFORM**

**CHSR
PLATFORM**

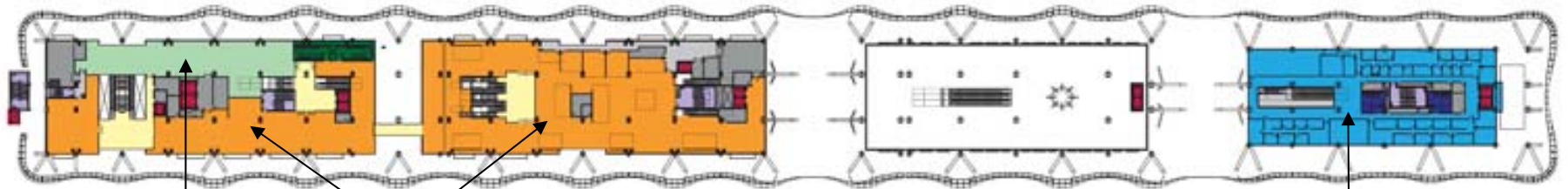
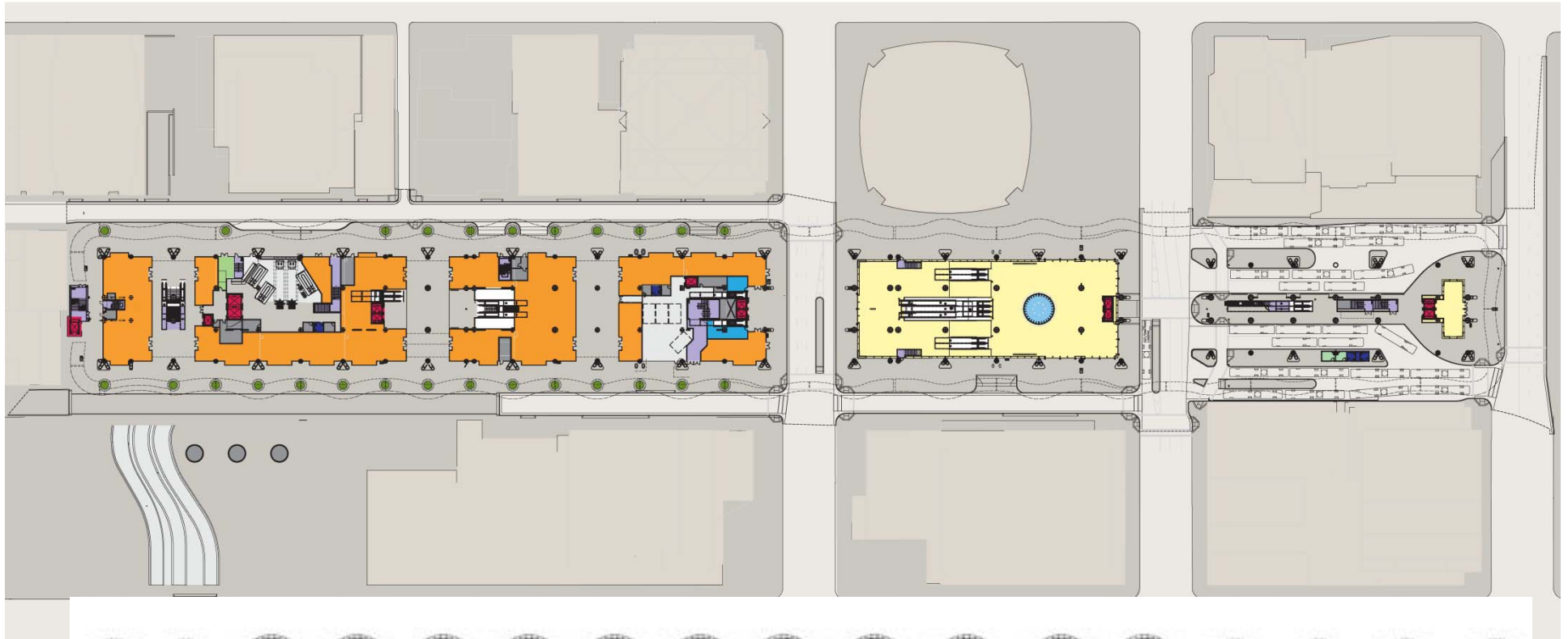
**CALTRAIN
PLATFORM**





Transbay Transit Center

Ground & Mezzanine Levels



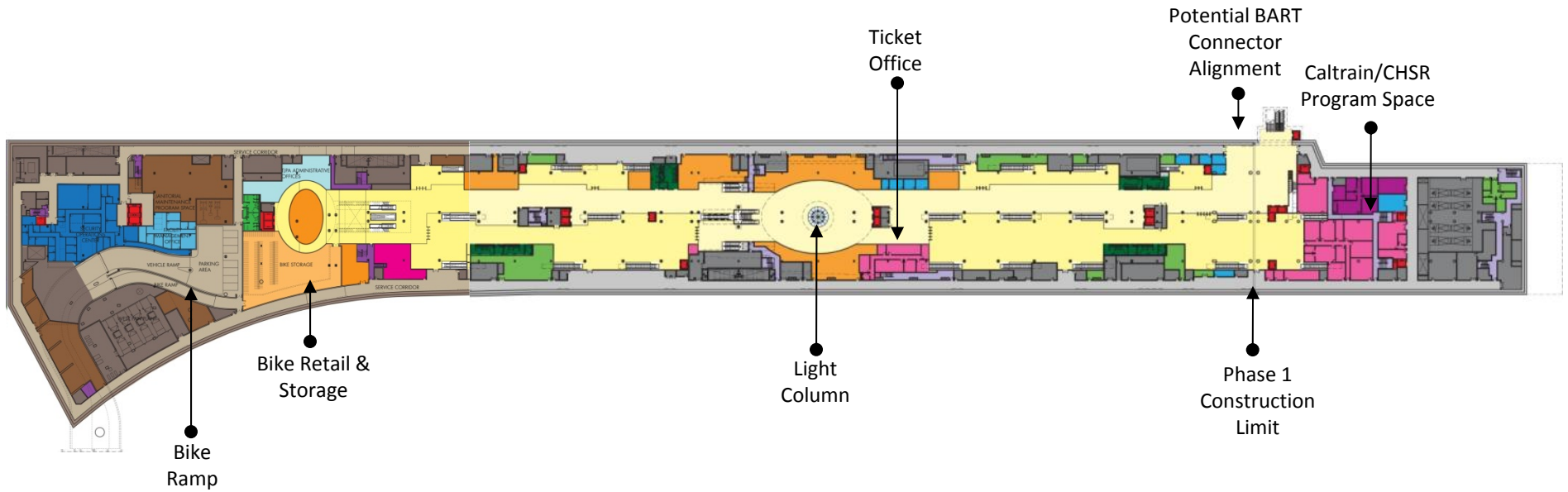
Amtrak/Greyhound

Retail

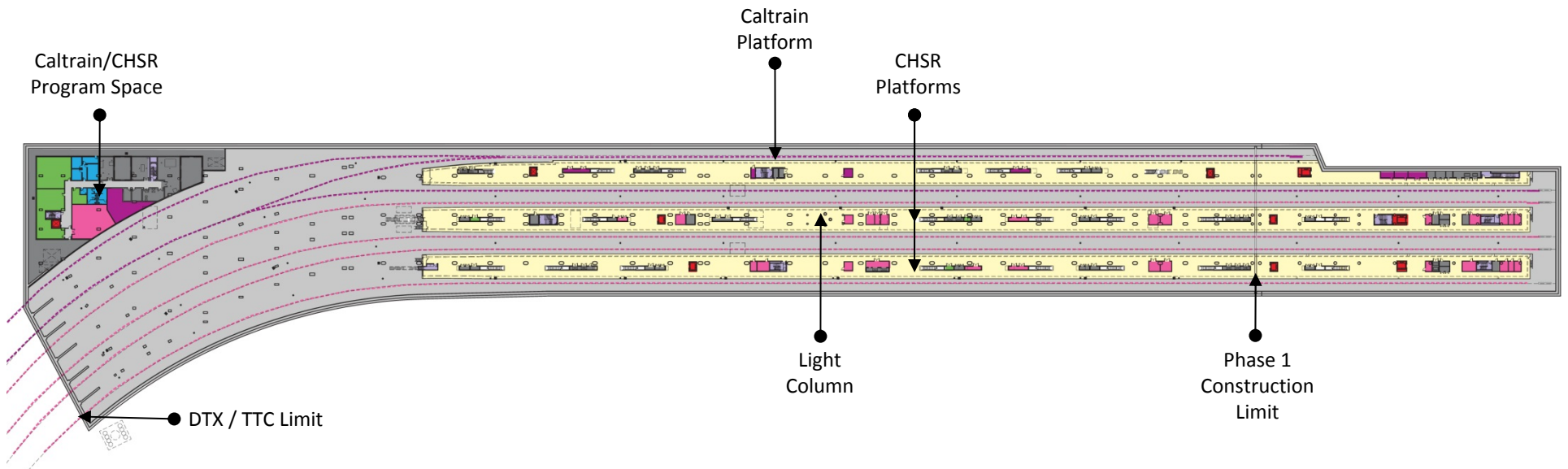
Service







Lower Concourse Level

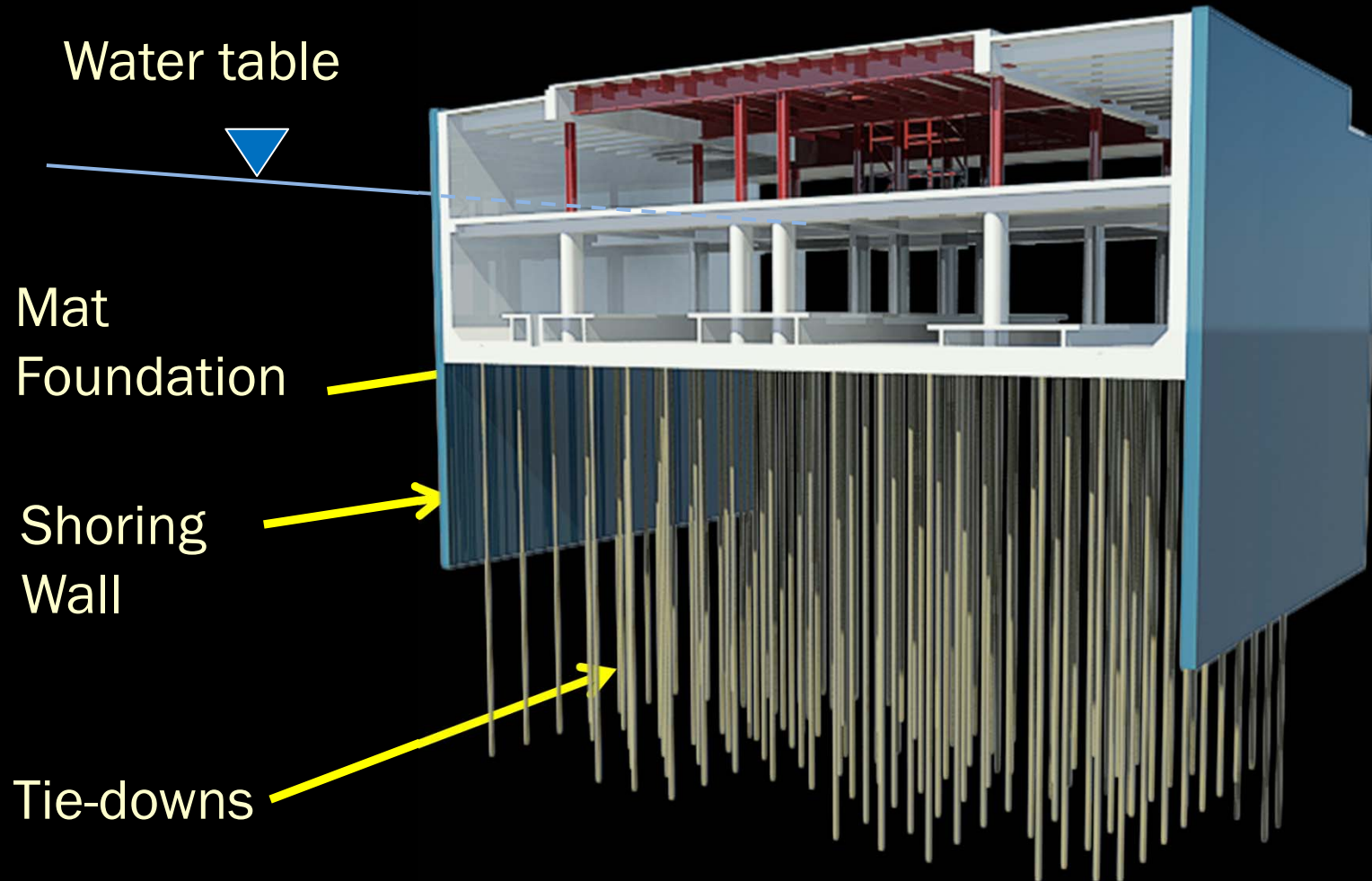


Train Platform Level

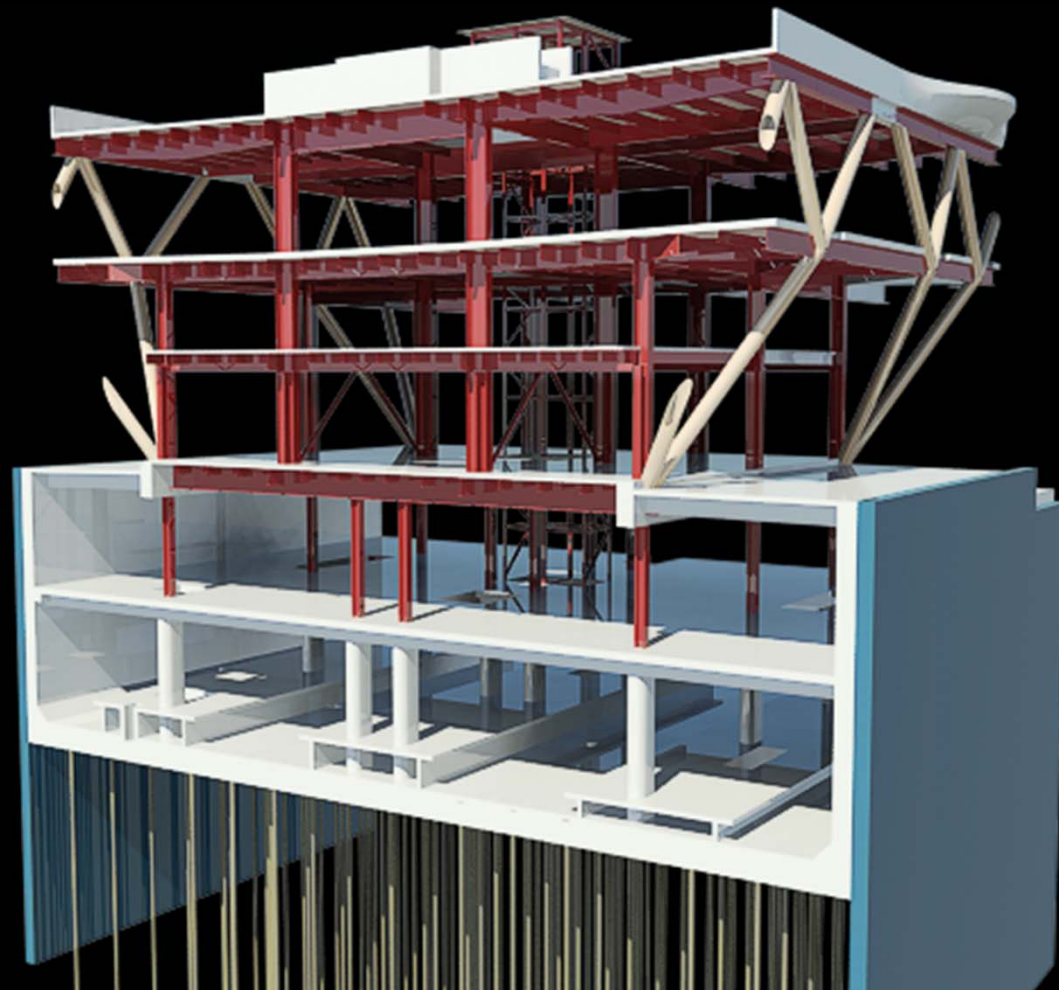




Superstructure



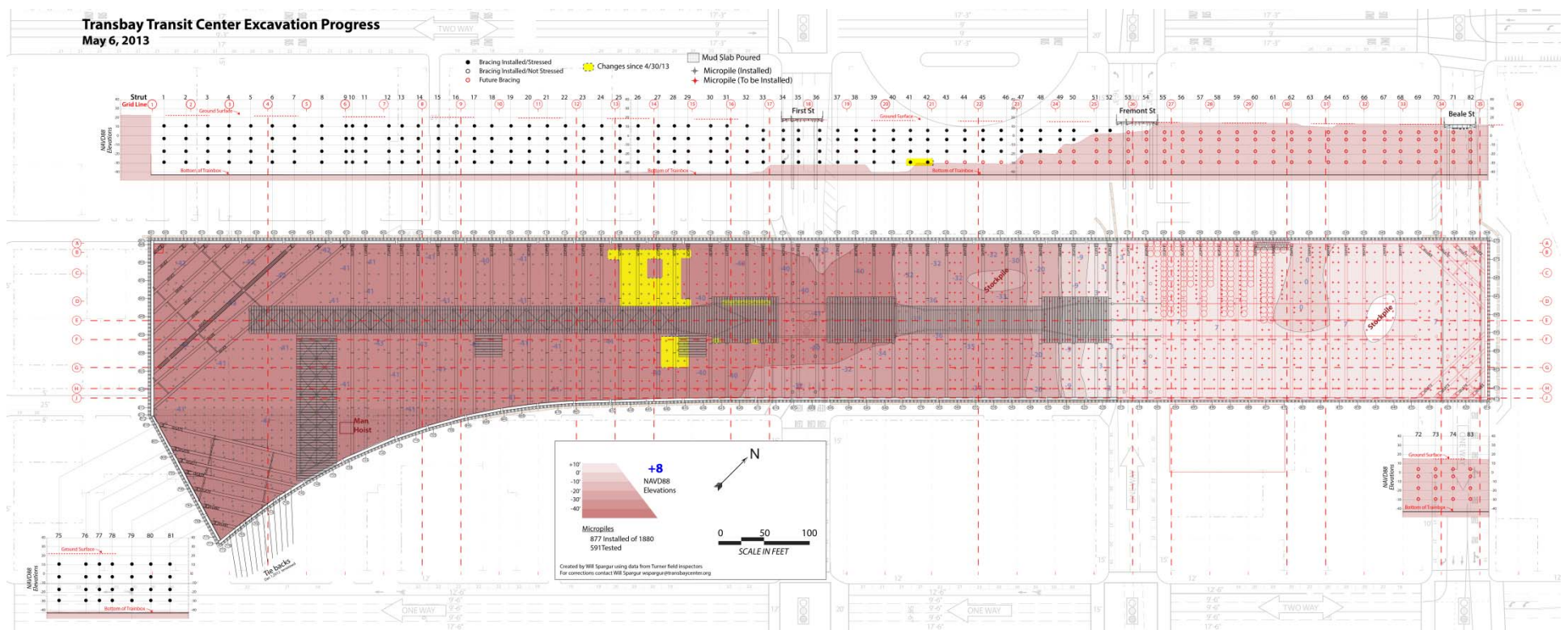
Superstructure





Transbay Transit Center

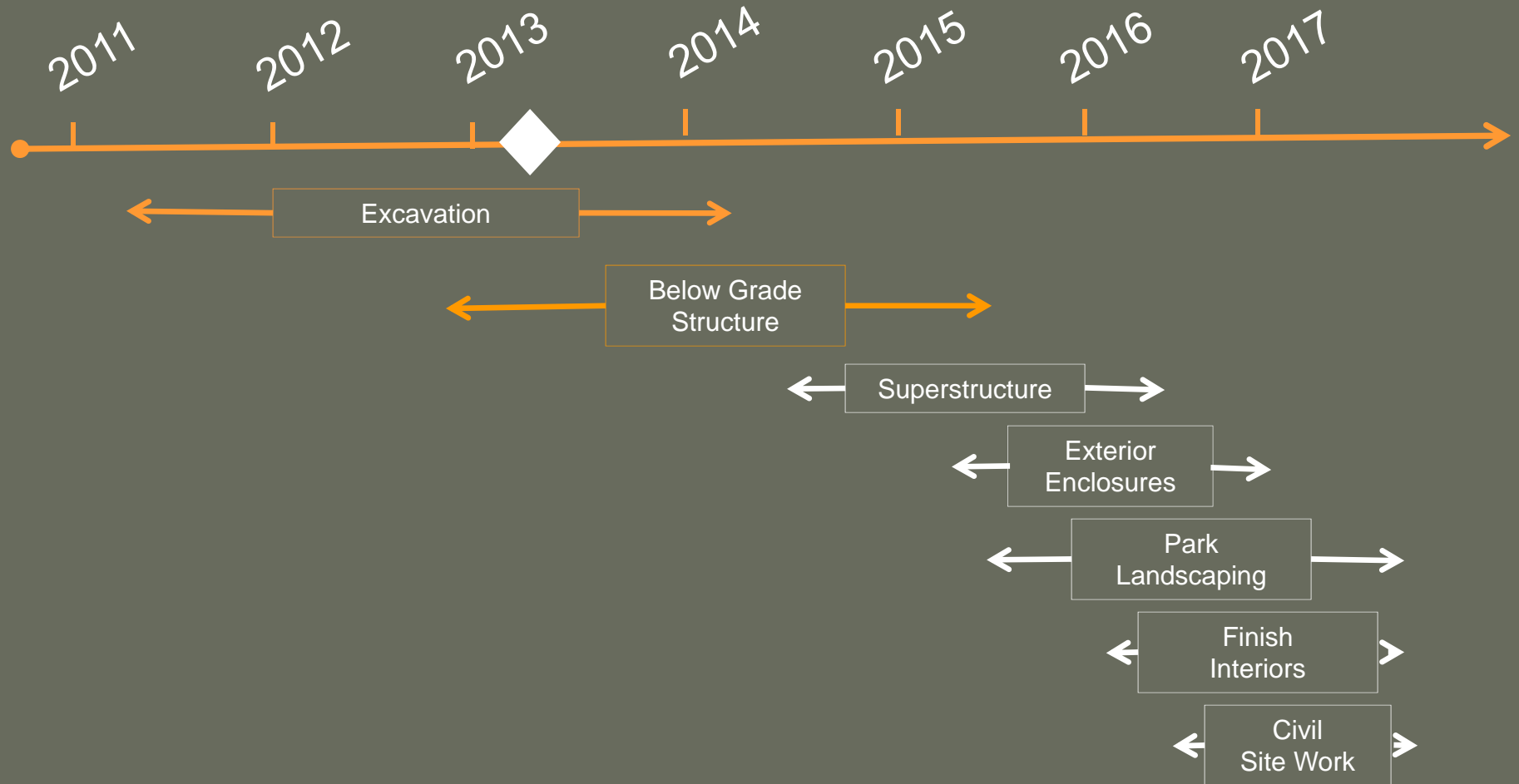
Excavation and Bracing Status May 6, 2013





Transbay Transit Center

Phase 1 Construction Timeline Summary





Downtown Core

Transbay Transit Center

Existing Caltrain Station



Transbay Transit Center

Phase 2 Downtown Rail Extension

- Start of Construction Dependent upon Full Funding
- 2-track lead to DTX tunnel
- Fourth/Townsend Underground Station
- 3 Track Tunnel on Townsend & 2nd Streets
- TTC with 3 Platforms and 6 Tracks





Transbay Transit Center

SUPPLEMENTAL EIS/EIR

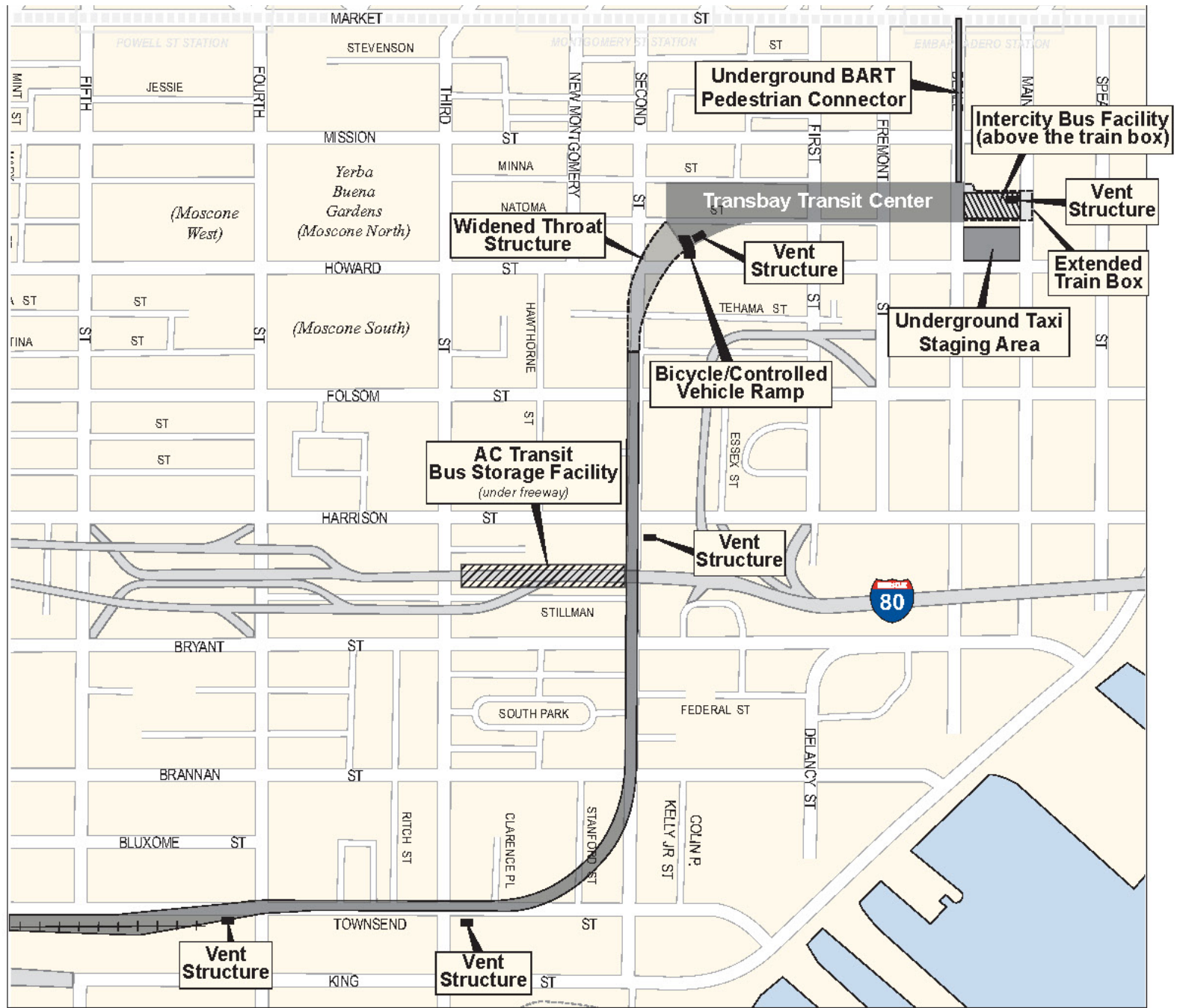


Transbay Transit Center

WHY SEIS/EIR REQUIRED

- Original EIS/EIR for the Transbay Program approved in 2004
- Conditions in study area have changed and refinements proposed
- SEIS/EIR will update the Program's environmental document

-
- Phase 1: Temporary Terminal (completed)
Transit Center (under construction)
 - Phase 2 : Downtown Rail Extension (DTX), to bring Caltrain from 4th and King Streets into the lower level of Transit Center, and accommodate future high-speed trains



Transbay Program Phase 2 Proposed Refinements



Transbay Transit Center

PURPOSE & NEED

- Enhance pedestrian connections, bicycle storage, intercity bus facilities, and taxi staging areas to reinforce transit and alternative local/regional travel
- Construct widened throat structure below grade at west entry to train box and extension eastward to Main Street to respond to design specifications issued by California High-Speed Rail Authority
- Construct 5 ventilation/emergency tunnel exits to comply with safety standards for underground facilities and meet emergency response needs
- Offer optional off-hour and event parking at the AC bus storage area to increase parking options



Transbay Transit Center

ALTERNATIVES

No Action/No Project Alternative

- Phase 1 of Locally Preferred Alternative (LPA), selected by FTA, FRA, and TJPA and analyzed in the 2004 FEIS/EIR, which is under construction
- Represents existing conditions, services, facilities and reasonably foreseeable, approved Phase 2 Downtown Rail Extension DTX based on current plans

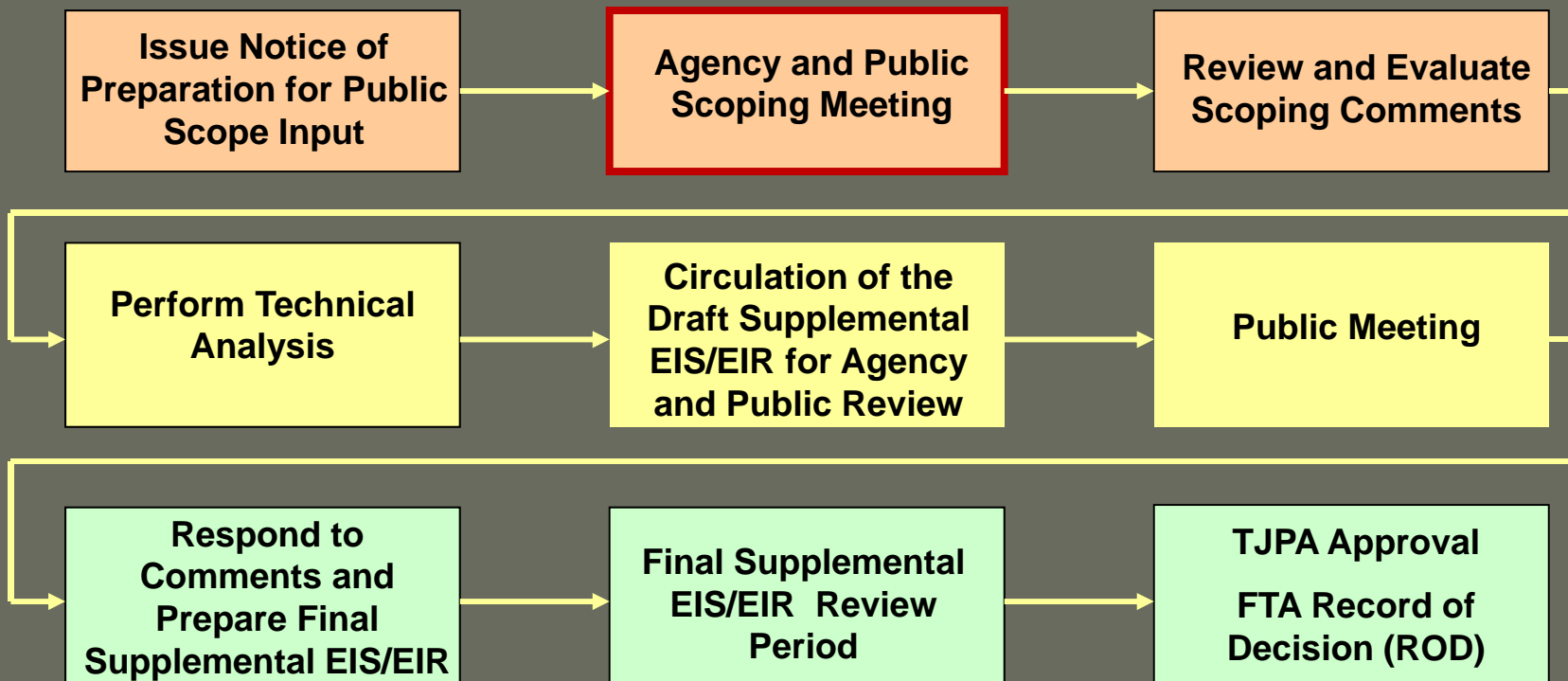
Proposed Action/Proposed Project (Refined LPA)

- Substantially similar to LPA, except for proposed refinements to be included in Phase 2:
 - addition of the widened throat structure
 - extended train box to accommodate the revised track layout
 - required platform lengths by California High-Speed Rail Authority
 - other project refinements



Transbay Transit Center

ENVIRONMENTAL PROCESS





Transbay Transit Center

PUBLIC PROCESS

Opportunities for Input

- TJPA, FTA and FRA invited other federal / non-federal agencies to become "participating agencies"
- **Public Scoping Period (Now) : April 30 – June 13, 2013**
- **Public Scoping Meeting (Today) : May 14, 2013**
- Draft SEIS/EIR Review Period : Release for review - early 2014
- Public Hearing on Draft SEIS/EIR: Approx. 30 Days after release
- Final SEIS/EIR and CEQA/NEPA Decisions : Approx. End of 2014



Transbay Transit Center

Public Comments

For Additional Information

- TJPA: <http://transbaycenter.org/tjpa/documents/environmental-documents>
- Caltrain: <http://www.caltrain.com/projectsplans/CaltrainModernization.html>
- High-Speed Train: <http://www.cahighspeedrail.ca.gov>

