



Construction Update

December 13, 2012

Transbay Transit Center

TJPA





Transbay Transit Center

Period Summary

- There were no recordable or lost time incidents this period.
- Excavation and bracing installation continued in Zones 1, 2 and 3 with struts installed in Zone 1 at bracing levels A, B, C and D. In Zone 2 struts are in progress at the A, B and C bracing levels. In Zone 3 bracing is in progress at the A and B bracing levels.
- There have been over 561,000 craft hours completed, excluding demolition, through 11/29/12. Over 11,000 completed since the last update (11/19/12).
- The BSE Contractor has completed 165 buttress shafts through 12/7/12, a total of 8 since our last update (11/19/12).



Transbay Transit Center

Period Summary

- The Below Grade Structure Package has been awarded, submittals have begun.
- Construction on RUP 4.2, the AWSS Work, continued this period on Mission Street and will continue into early 2013. The contractor has received an exemption to the Holiday Moratorium requirements and will continue work from west to east on Mission Street between First and Fremont Streets.
- Zone 3 access trestle and the trestle deck is now connected to First and Fremont Streets.
- Over 70 production micropiles have been completed in Zone 1.



Transbay Transit Center

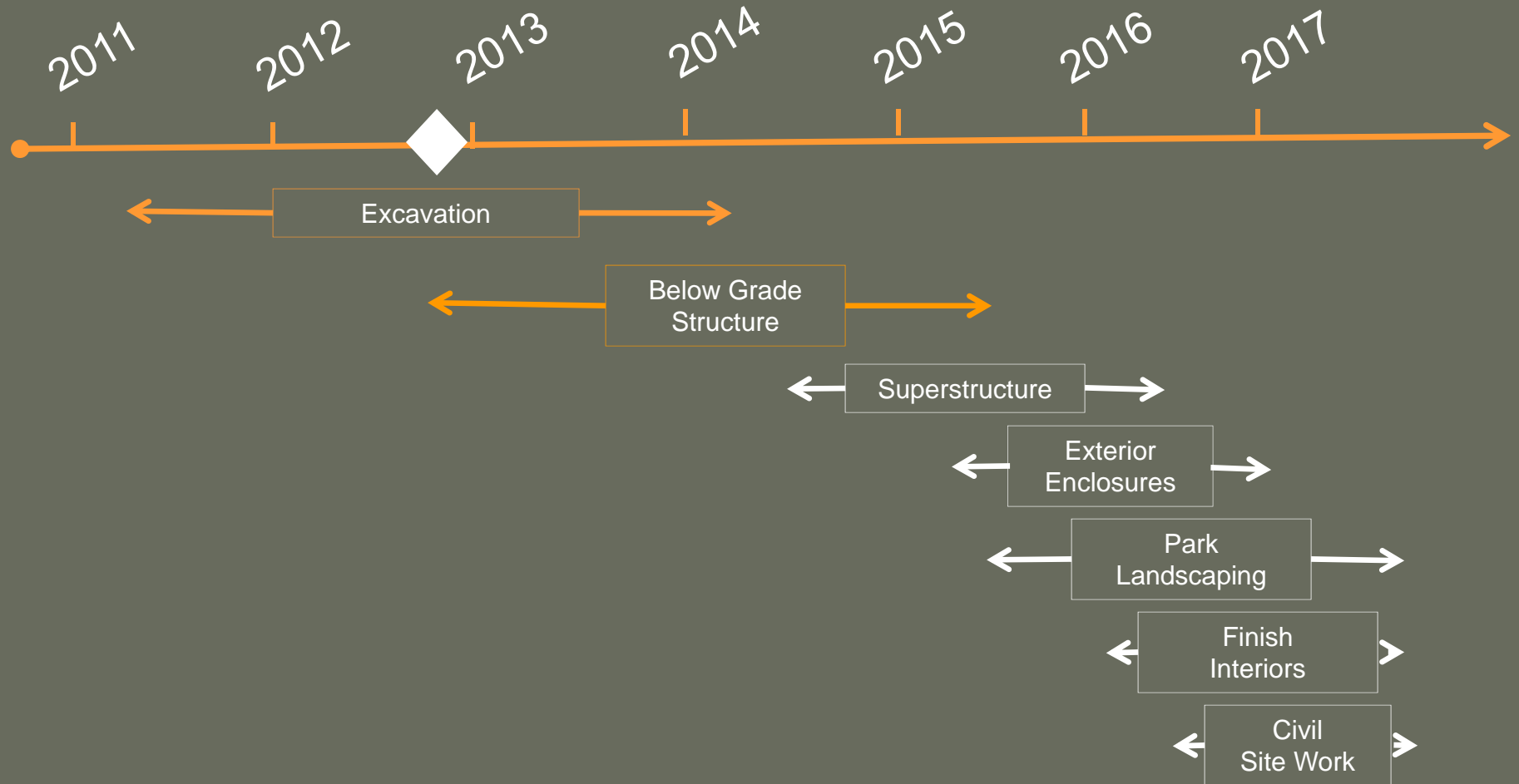
The Next 90 Days

- Complete all Zone 1 excavation.
- Continue excavation through bracing levels A, B, C and D in Zone 2 and bracing levels A and B in Zone 3.
- Complete production micropiles in Zone 1 and begin production piles in Zone 2.
- Mobilize Below Grade Structure Contractor and start construction in Zone 1.
- Grounding trade contractor, working for the Below Grade Structure trade contractor will begin work in January.
- Continue Buttress Shaft work in Zone 4, next major milestone is the completion of all buttress shaft work by April 1, 2013.



Transbay Transit Center

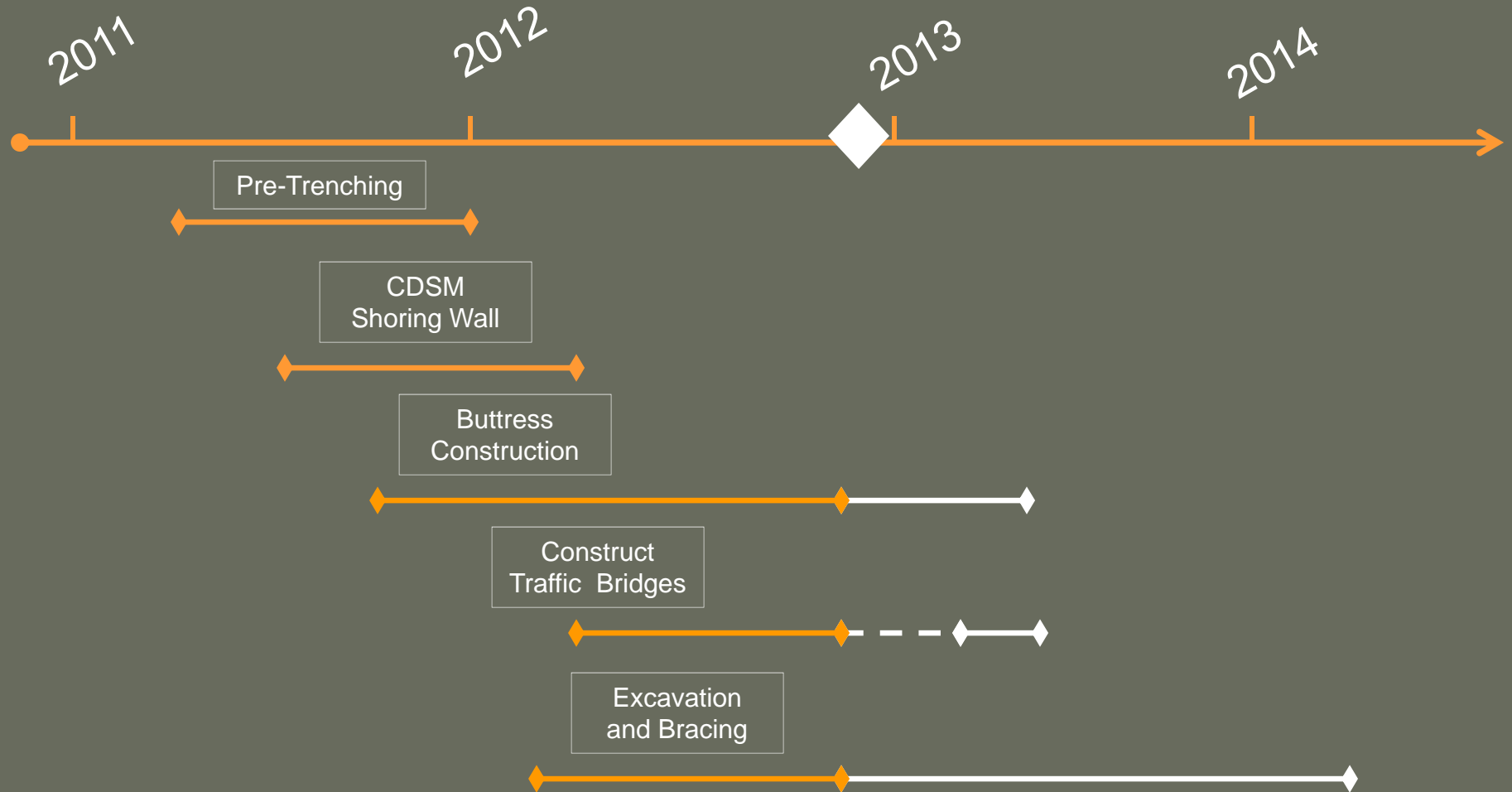
Construction Timeline Summary





Transbay Transit Center

BSE Timeline Summary





Transbay Transit Center

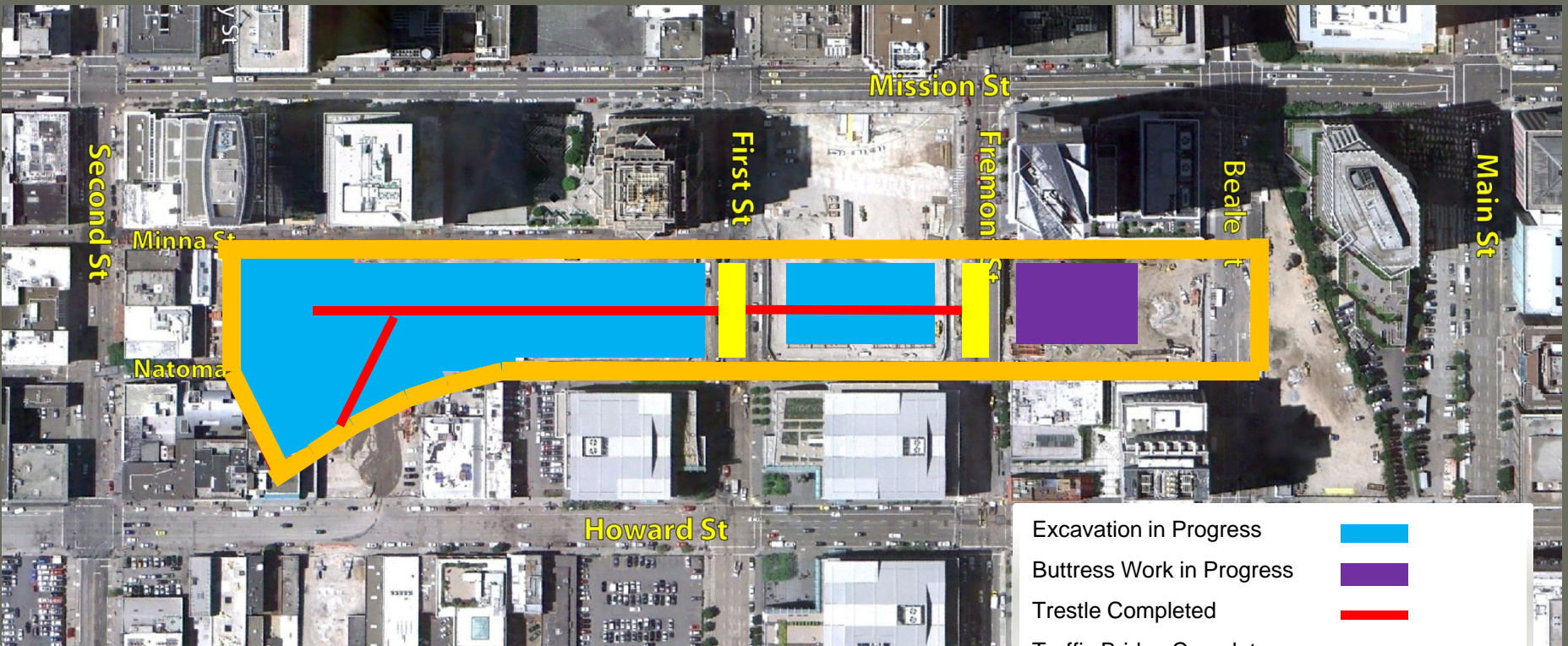
Current Site Status

2011

2012

2013

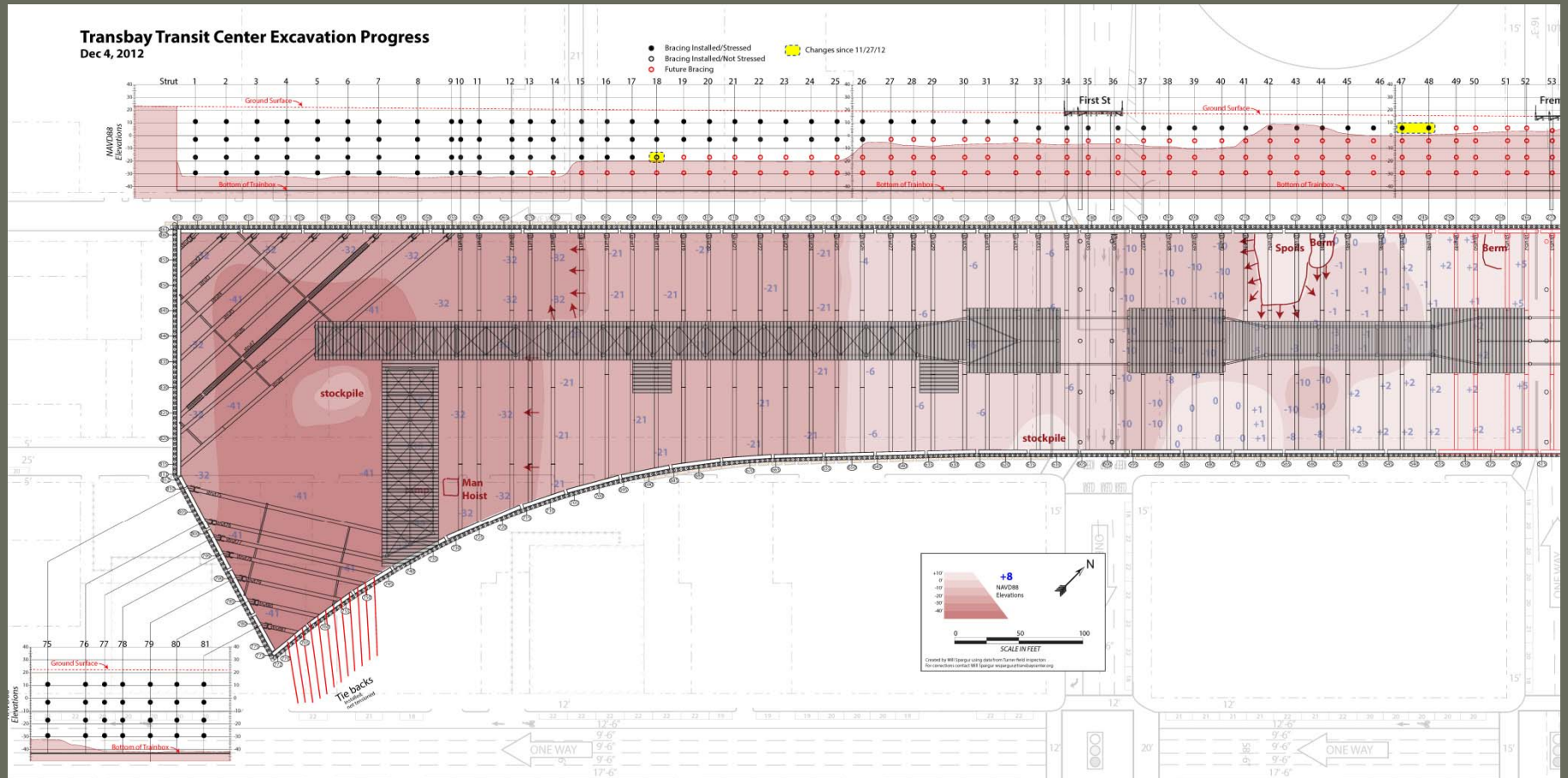
2014





Transbay Transit Center

Excavation and Bracing Status December 4, 2012





Transbay Transit Center

Central and West Sections Progress



End of October 2012



End of November 2012



Transbay Transit Center

Excavation – Zone 1





Transbay Transit Center

Micropile Installation – Zone 1





Transbay Transit Center

Excavation and Bracing – Zone 2





Transbay Transit Center

Bracing Under First Street Bridge – Zone 2





Transbay Transit Center

Access Trestle – Zone 3

Connected to Fremont Street Bridge





Transbay Transit Center

Excavation – Zone 3





Transbay Transit Center

East Section Progress



10/31/2012

End of October 2012



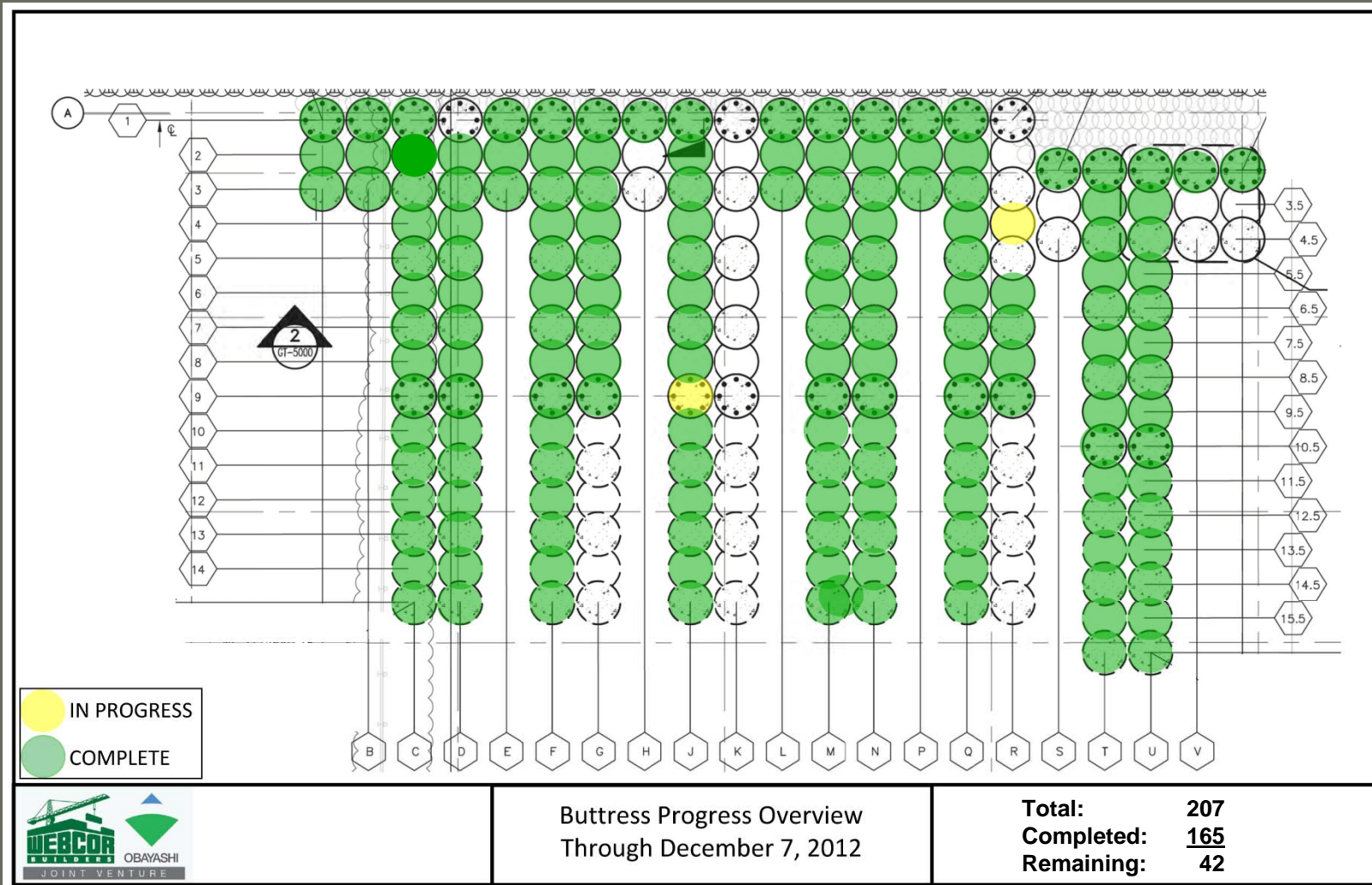
11/29/2012

End of November 2012



Transbay Transit Center

Buttress Progress



Buttress Progress Overview
Through December 7, 2012

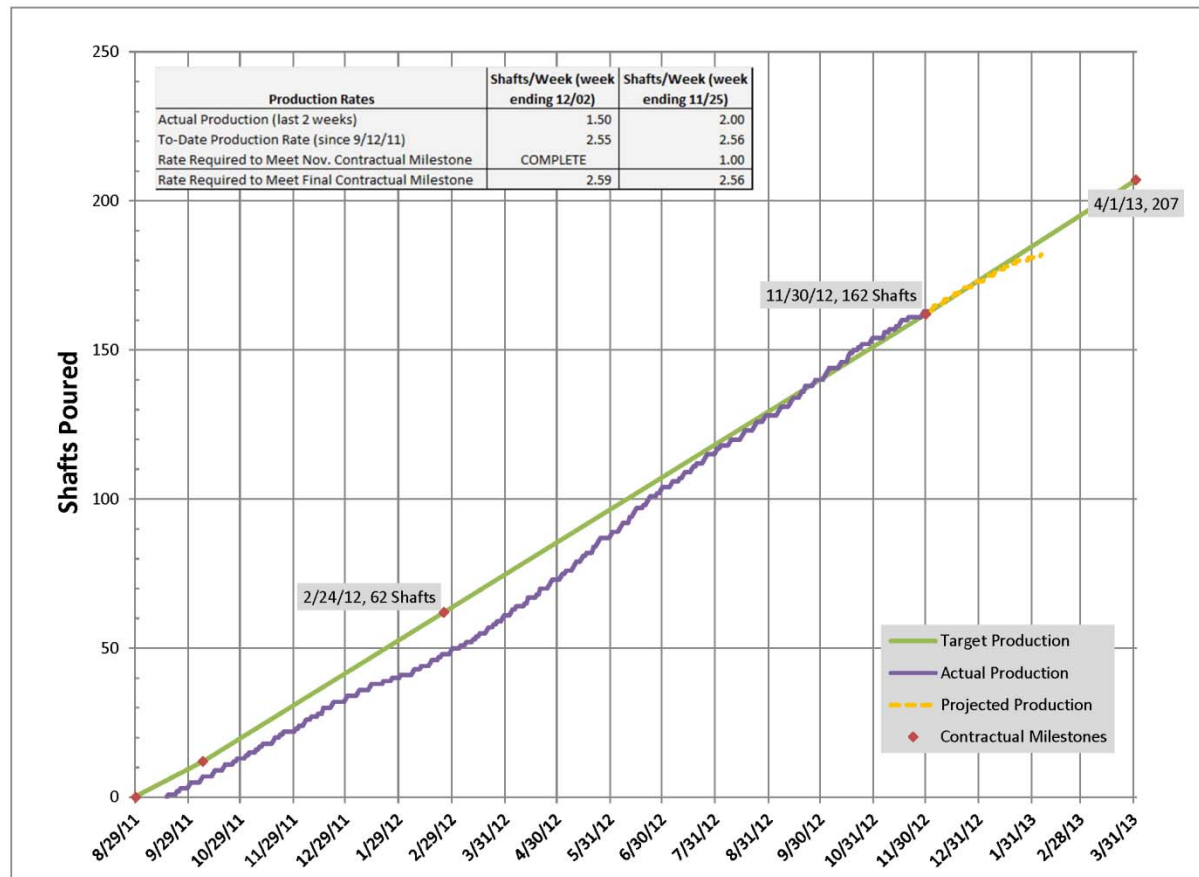
Total: 207
Completed: 165
Remaining: 42



Transbay Transit Center

Buttress Progress

Buttress Shaft Production (through 207 total shafts)



Date: 12/3/2012



Transbay Transit Center

Buttress Progress





Transbay Transit Center

Sheet Pile Cut Off Wall Zone 4





Transbay Transit Center

Utility Relocation - AWSS Installation Update



B1



Transbay Transit Center

Up Next the Substructure

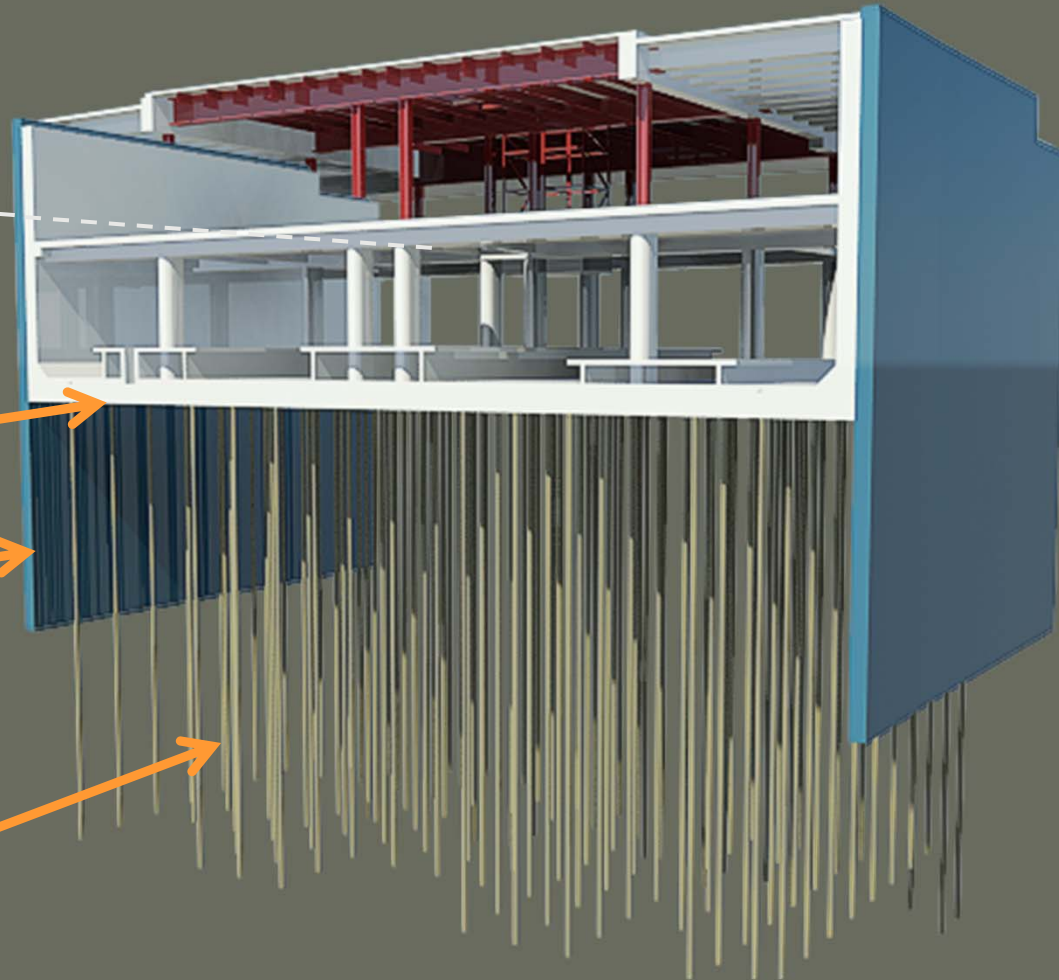
Water table



Mat
Foundation

CDSM
Shoring
Wall

Micropiles



Slide 22

B1

animate this slide to sequentially show:

1. shoring walls
2. Mat slab (& shoring)
3. Lower concourse and columns

THEN ON A NEW SLIDE:

4. Steel frame & concrete ground floor slab
5. Steel superstructure

SHOW SHORING WALLS IN SAY BLUE, CONCRETE IN GREY; STEELWORK IN RED PRIMER

BGibbons, 9/15/2011



Transbay Transit Center

Transit Center Construction Budget Status

Trade Package ID And Description

	Baseline Budget	Budget Xfer/ Changes	Current Budget	Committed To Date	Actual To Date
TBD To Be Determined (Awarded)					
	576,937,434	-37,088,627.59	539,848,806	0	0
TG019.1 TG019.1 - 301 Mission Screen Wall (Transworld Construction)					
	717,883	31,849.00	749,732	749,733	749,733
TG03 TG03: TCB - Buttress, Shoring and Excavation (Balfour Beatty)					
	202,605,658	27,423,640.00	230,029,298	235,700,008	152,294,170
TG04.1 TG04.1: UR - Natoma/Fremont Water/Sewer (M Squared)					
	2,653,064	-125,516.81	2,527,547	2,732,699	2,527,548
TG04.2 TG04.2: UR - Mission St. AWSS (
	5,810,340	387,229.00	6,197,569	5,958,775	3,354,105
TG04.3 TG04.3: UR - Howard/First/Beale Water (M Squared)					
	1,838,318	-46,137.00	1,792,181	1,792,180	1,792,180
TG04.4 TG04.4: UR - Natoma/First Sts Water & Sewer (M Squared)					
	2,288,430	182,729.27	2,471,159	2,471,159	2,460,339
TG04.5.1 TG04.5.1: UR & Joint Trench - Minna St (Trinet Construction)					
	5,189,597	-395.51	5,189,201	5,189,201	5,189,202
TG04.6 TG04.6: UR - Beale St. Sewer (M Squared)					
	1,993,044	37,420.58	2,030,465	2,030,464	1,912,059
TG05.1 TG05.1 - Survey & Control (Chaudhary)					
	1,352,500	0.00	1,352,500	1,352,500	239,547
TG05.2 TG05.2 - Temporary Power (Bass Electric)					
	703,300	0.00	703,300	703,300	632,970
TG05.4 TG05.4 Traffic Control Services (Sandis)					
	2,164,000	11,093.75	2,175,094	2,175,094	237,828
TG05.7 TG05.7 - Site Maintenance Services (Clipper)					
	5,951,000	13,001.31	5,964,001	5,964,001	389,733
TG06.0 TG06.0 - Below Grade Structure (Shimmick)					
	120,936,114	0.00	120,936,114	6,492,000	0
TG06.1 TG06.1 - Geothermal Loop (S3H)					
	1,808,836	0.00	1,808,836	1,808,836	1,588
TG06.2 TG06.2 - Grounding System (Bay Area Systems)					
	182,347	0.00	182,347	182,347	0
Report Totals	933,131,865	-9,173,714	923,958,151	275,302,298	171,781,002



Transbay Transit Center

Bay Area Labor – Trade Packages

- To date, Webcor / Obayashi's Trade Subcontractors have worked a total of:

561,315 Craft Hours

- To date, Bay Area Labor has contributed 352,730 hours, or 63% of the total Craft Hours.



Transbay Transit Center

Bay Area Regional Labor Breakdown

Labor by Area	Through November 2012	
Location	Total Hours Completed	Hours Percent
East Bay (Alameda, Contra Costa, Solano)	165,564	30%
North Bay (Marin, Napa, Sonoma)	14,986	3%
South Bay (San Mateo, Santa Clara)	58,877	10%
San Francisco	113,305	20%
Other*	208,587	37%
Totals	561,315**	100%

*Other includes workers from throughout California including the Central Valley as well as workers from out of state who are onsite for specific tasks.

**Total hours are for the Transit Center construction work and do not include the initial Demolition work represented by a total of approximately 55,000 craft hours.



Transbay Transit Center

Labor Breakdown by Trade through November 2012

Classification	TTC Building and RUP's*
Inspectors – Soils / Material Test	35
Carpenters and Related Trades	31
Cement Mason	13
Electrical – Utility Lineman	19
Electrician	20
Field Surveyor	16
Iron Worker	55
Laborer and Related Trades	405
Operating Engineer	242
Pile Drivers	98
Roofer	2
Sheet Metal	5
Teamsters	118
Tile Setters / Finishers	7
Totals	1,066

* Relocation of Utilities Project



Transbay Transit Center

Questions?