



Community Meeting Construction Update

August 10, 2011

Transbay Transit Center

TJPA





Transbay Transit Center

Our Team:

- Transbay Joint Powers Authority (TJPA)
- Turner Construction
- Webcor-Obayashi
- PMPC/ URS
- Singer Associates, Inc.



Transbay Transit Center

Demolition Update

- Demolition Work is substantially complete. Some of the highlights of the last month include:
 - Over 52,000 craft hours have been completed by the demolition contractor without accident or injury.
 - Demolition of the buildings on Natoma and Howard streets are expected to be finished by the end of August.
 - Rough shaping for the Hawkinson sculpture piece has been completed by EBI.



Transbay Transit Center

Construction Update – Utility Relocation Work

- Utility Relocation Packages
 - Water Relocation on Howard and Beale Streets. All work completed in July.
 - Sewer and Sludge Relocation on Beale Street. New sewer and sludge line and demolition of abandoned utilities completed in July. Final catch basin at the north end of Beale Street to be completed by end of August.
 - Water, Sewer, and Joint Trench on Minna Street. All Work completed in June
 - Water and Sewer Relocation Natoma and Fremont Streets. Water installation has been completed. Sewer work on Fremont Street is expected to be completed by end of August.
 - Water and Sewer Relocation on Natoma and First Streets. Sewer on Natoma Street to be complete August 12st.
 - AWSS on Mission Street. Work is scheduled to begin in the first quarter of 2012.



Transbay Transit Center

Construction Update

- Transit Center
 - Buttress, Shoring and Excavation (BSE)
 - BSE Construction
 - BBII continues pre-trenching in anticipation of the CDSM shoring wall installation. Zone 4 pre-trenching has been completed, work is underway in Zone 3 (the central section) and Zones 1 and 2 (the west end).
 - In conjunction with pre-trenching, de-watering wells have been installed along Natoma and Minna Streets.
 - BBII continues to use the central section of the former terminal building for the fabrication of shoring steel for use in the upcoming shoring wall work.
 - The equipment pad required for the buttress drilling operation was completed in Zone 4.
 - The CDSM Shoring wall test section was completed in Zone 4 on June 18th. The test section required in Zone 1 started on July 7th. Following approval of the test sections production CDSM will begin in Zone 4 (anticipated by July 25th).



Transbay Transit Center

East Section Progress (Zone 4)



End of July 2011



Transbay Transit Center

Central and West Sections Progress



End of May 2011



End of June 2011



Transbay Transit Center

Ramp Parcels Available for Construction Staging



End of May 2011



End of June 2011



Transbay Transit Center

Remaining Demolition





Transbay Transit Center

Rough Shaping for Hawkinson Piece





Transbay Transit Center

Utility Relocation – Manhole 701 at Beale and Howard





Transbay Transit Center

Utility Relocation – Start of “Jack and Bore” work on Natoma Street at 2nd Street





Transbay Transit Center

Bay Area Labor - Demolition

- To date, Evans Brothers, Inc. and their subcontractors have worked a total of:

52,473 Craft Hours

- To date, Bay Area Labor has contributed 46,017 hours, or 88% of the total Craft Hours completed on all Phases of the demolition.



Transbay Transit Center

Bay Area Labor – Trade Packages

- To date, Webcor / Obayashi's Trade Subcontractors have worked a total of:

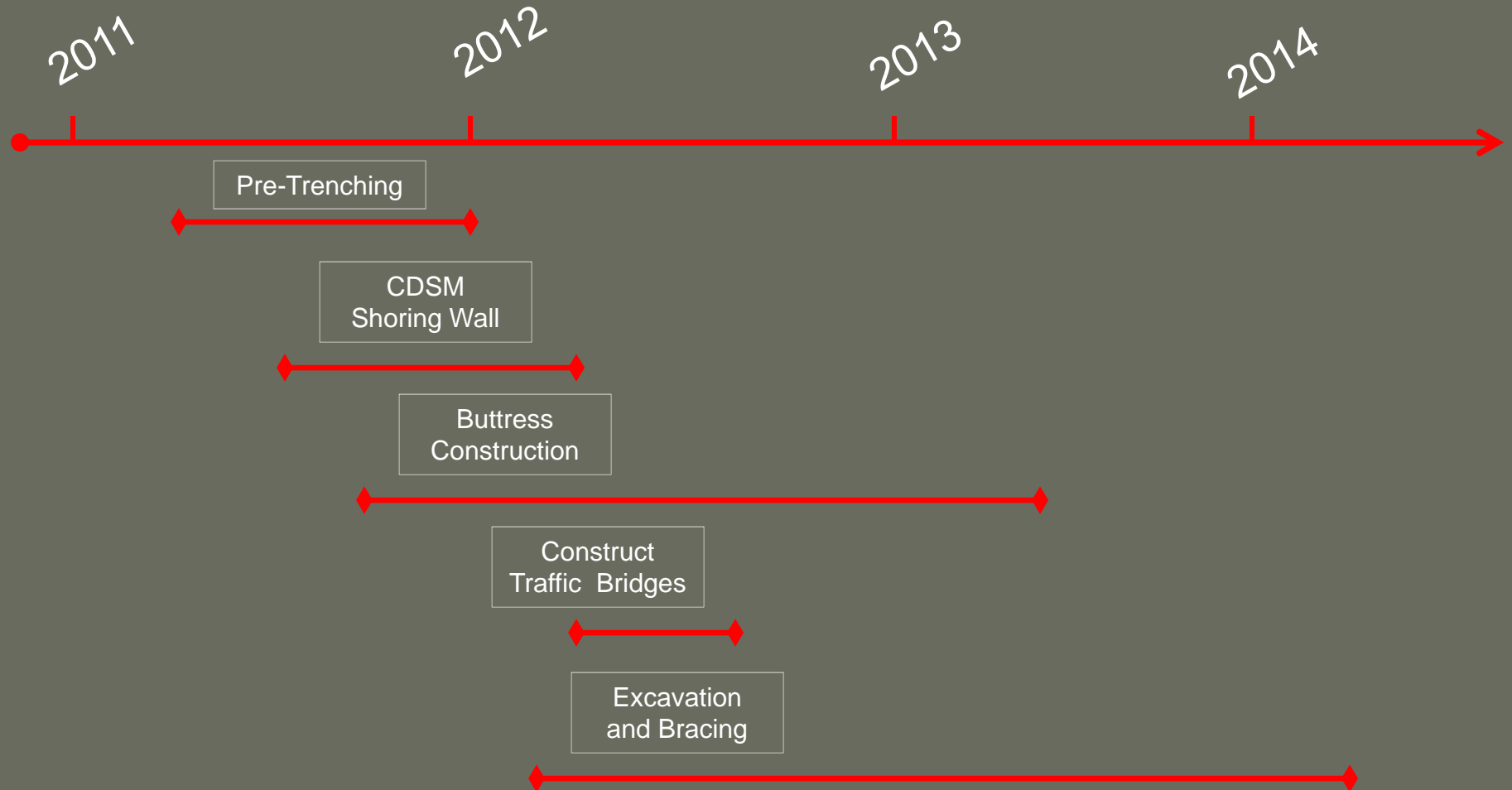
31,418 Craft Hours

- To date, Bay Area Labor has contributed 26,248 hours, or 84% of the total Craft Hours.



Transbay Transit Center

BSE Timeline Summary





Transbay Transit Center

Pre-Trenching



- Excavate the top 12-15 feet to remove piles, debris, rubble, and other obstructions in advance of shoring wall installation
- Ensures continuous productivity in shoring wall construction



Transbay Transit Center

Pre-Trenching

2011

2012

2013

2014

Pre-Trenching





Transbay Transit Center

Pre-Trenching Work Hours



- Began in June
- Monday through Friday with some weekend work depending upon obstructions encountered
- Primarily 7 AM – 5 PM



Transbay Transit Center

CDSM Shoring Wall



- Cement Deep Soil Mixed (CDSM) shoring wall forms perimeter of the excavation
- Extends 100+ feet into old bay clay to minimize water infiltration into the excavation
- 3,300 lineal feet
- Reinforced with steel I-beams
- Allows for dewatering and excavation



Transbay Transit Center

CDSM Shoring Wall

2011

2012

2013

2014

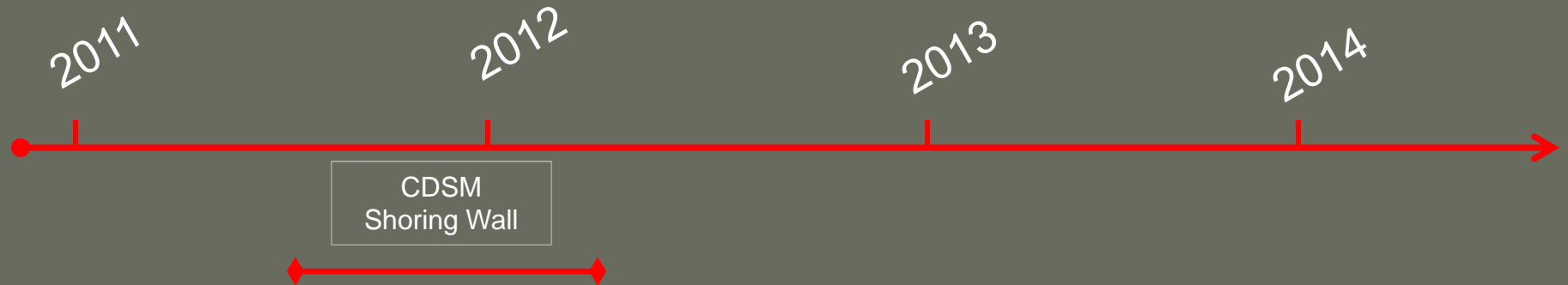
CDSM
Shoring Wall





Transbay Transit Center

CDSM Shoring Wall

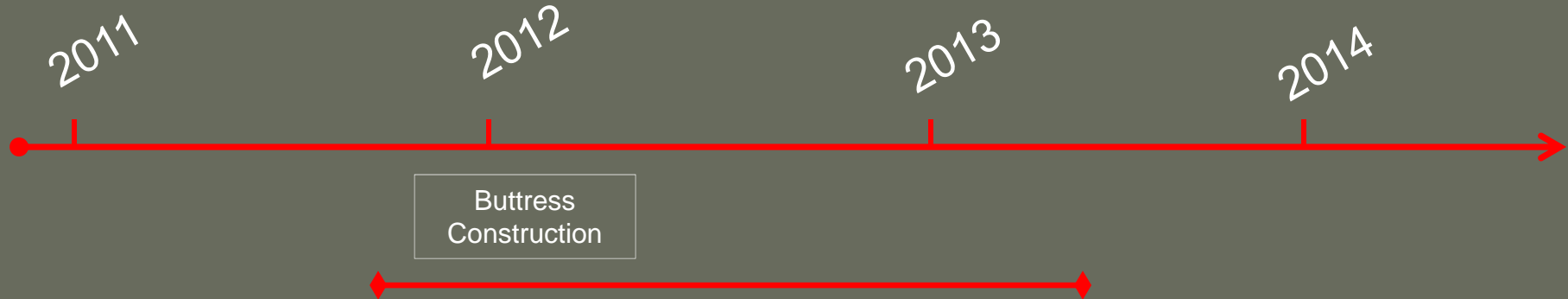


- Monday through Friday with some weekend work
- Extended day shifts 7 AM – 7 PM

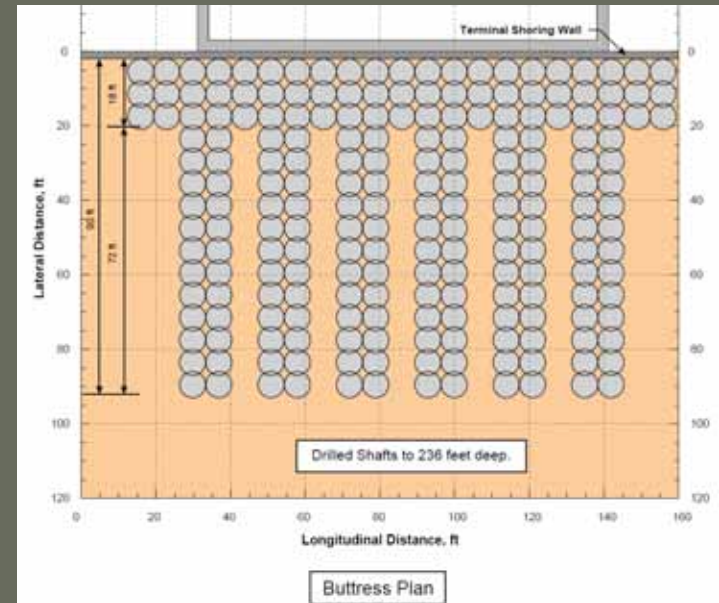


Transbay Transit Center

Buttress Construction



- 207 interlocking, 7-ft. diameter piles
- 240+/- feet deep into bed rock





Transbay Transit Center

Buttress Construction

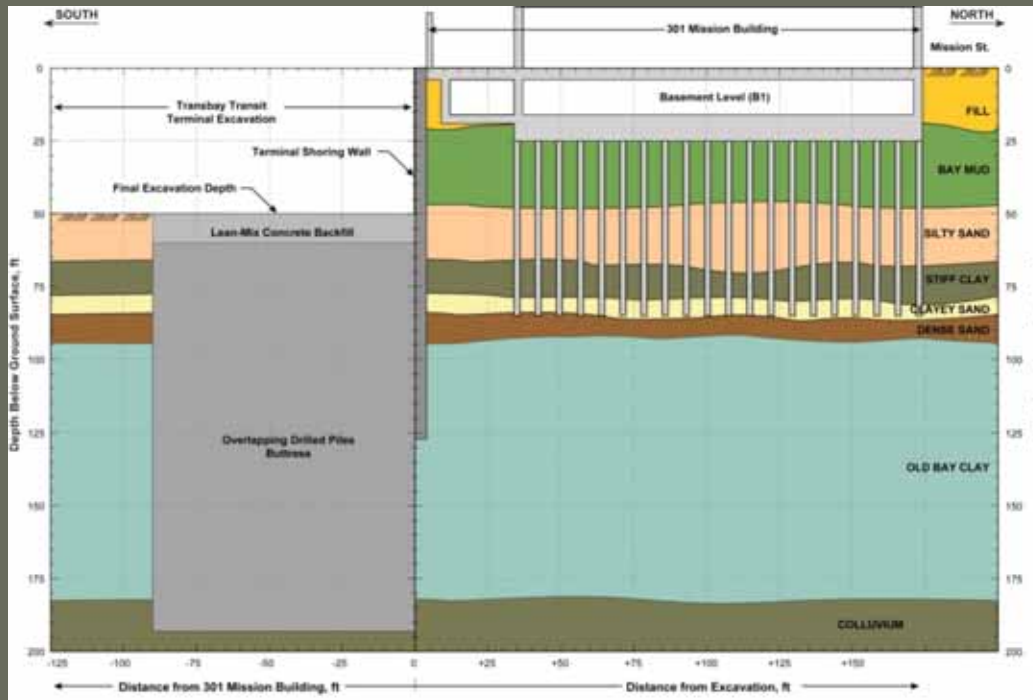
2011

2012

2013

2014

Buttress
Construction





Transbay Transit Center

Buttress Construction

2011

2012

2013

2014





Transbay Transit Center

Buttress Construction

2011

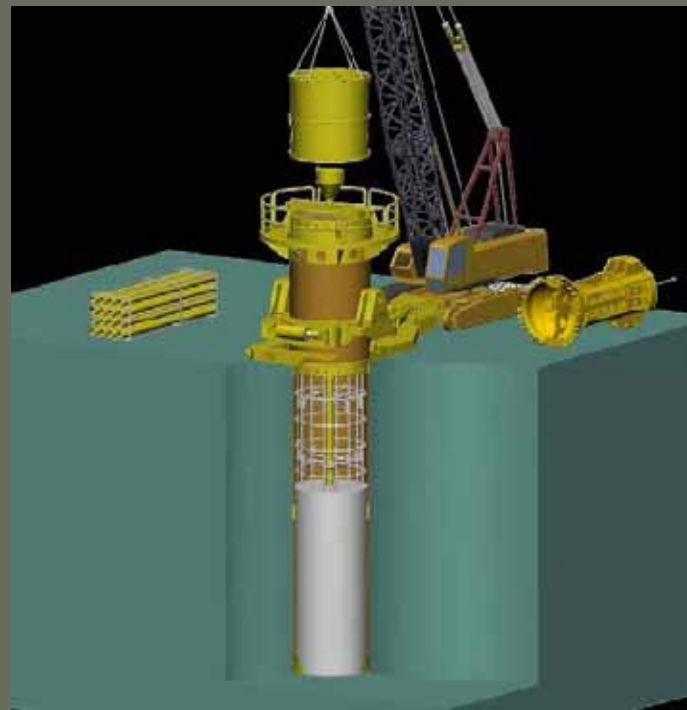
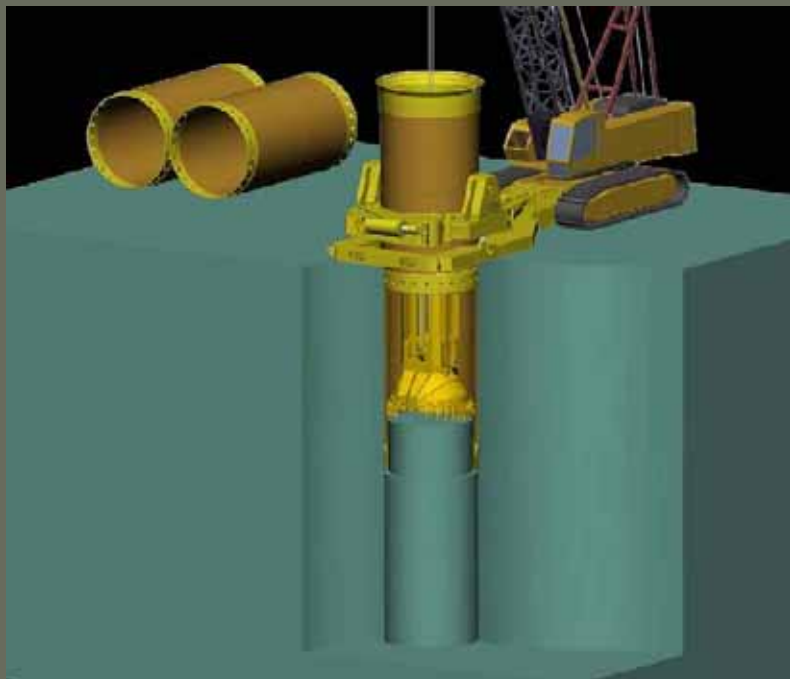
2012

2013

2014



Buttress
Construction





Transbay Transit Center

Planned Buttress Work Hours



- Weekday Schedule

- 10 hour day shift (6:00 am to 4:00 pm):
Two crews working simultaneously on drilling, excavating and concrete placement
- Swing shift (4:00 pm to 12:00 midnight):
One crew drilling, excavating and/or placing concrete and doing preventative maintenance
- Graveyard (12:00 midnight to 6:00 am)
Skeleton crew rotating casings to prevent binding



Transbay Transit Center

Planned Buttress Work Hours



- Weekend Schedule
 - Rotate casings as required
 - Preventive & Site Maintenance (Day Shift)



Transbay Transit Center

August 2011

2011

2012

2013

2014



Buttress Begins
August 29th



Transbay Transit Center

Questions?