



Community Meeting Construction Update

February 1, 2012

Transbay Transit Center

TJPA





Transbay Transit Center

Agenda

- Construction Progress Update
- Schedule Highlights
- Next 24 Months



Transbay Transit Center

East Section Progress



End of November 2011



End of January 2012



Transbay Transit Center

Central and West Sections Progress



End of November 2011

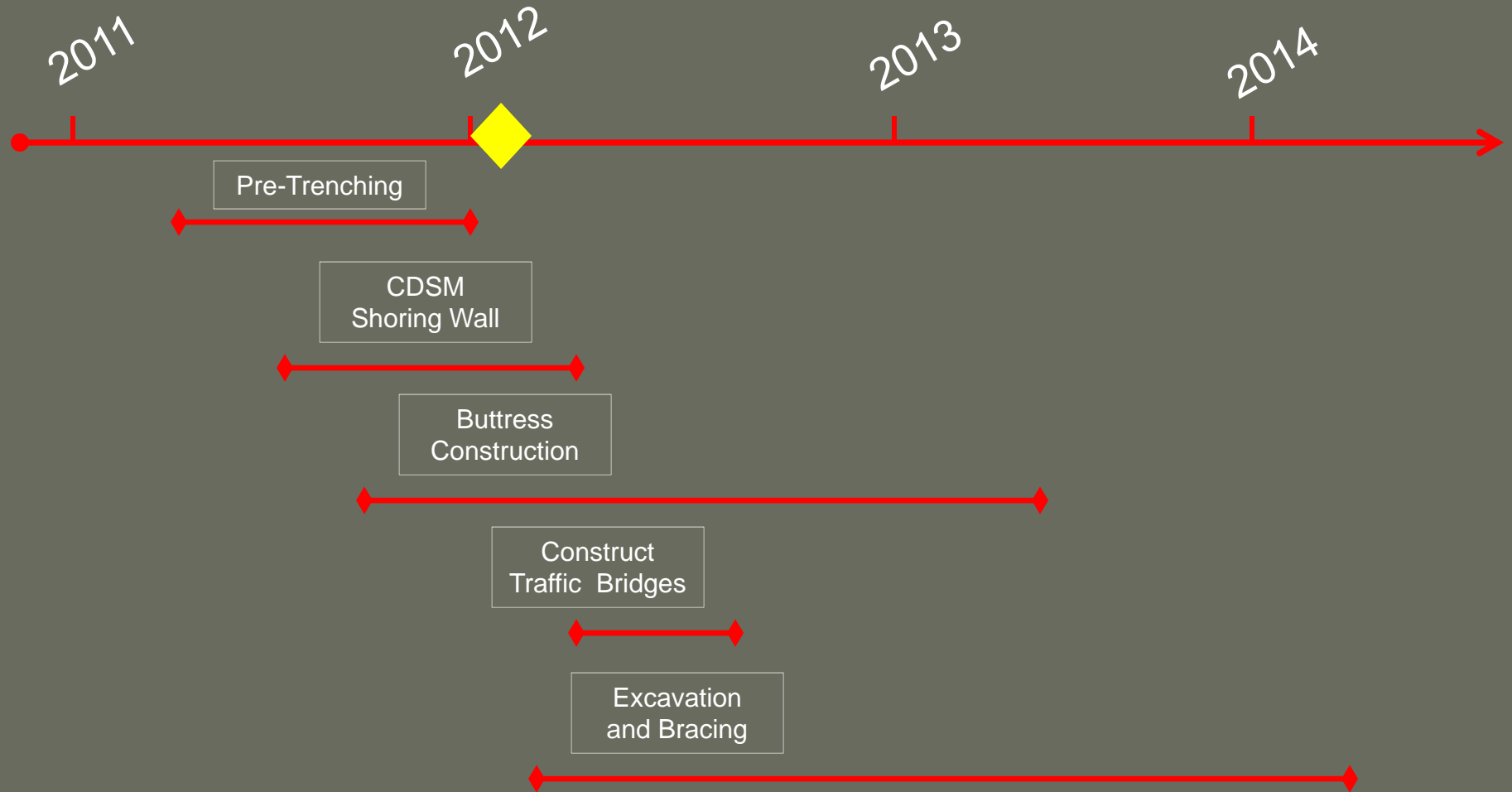


End of January 2012



Transbay Transit Center

BSE Timeline Summary





Transbay Transit Center

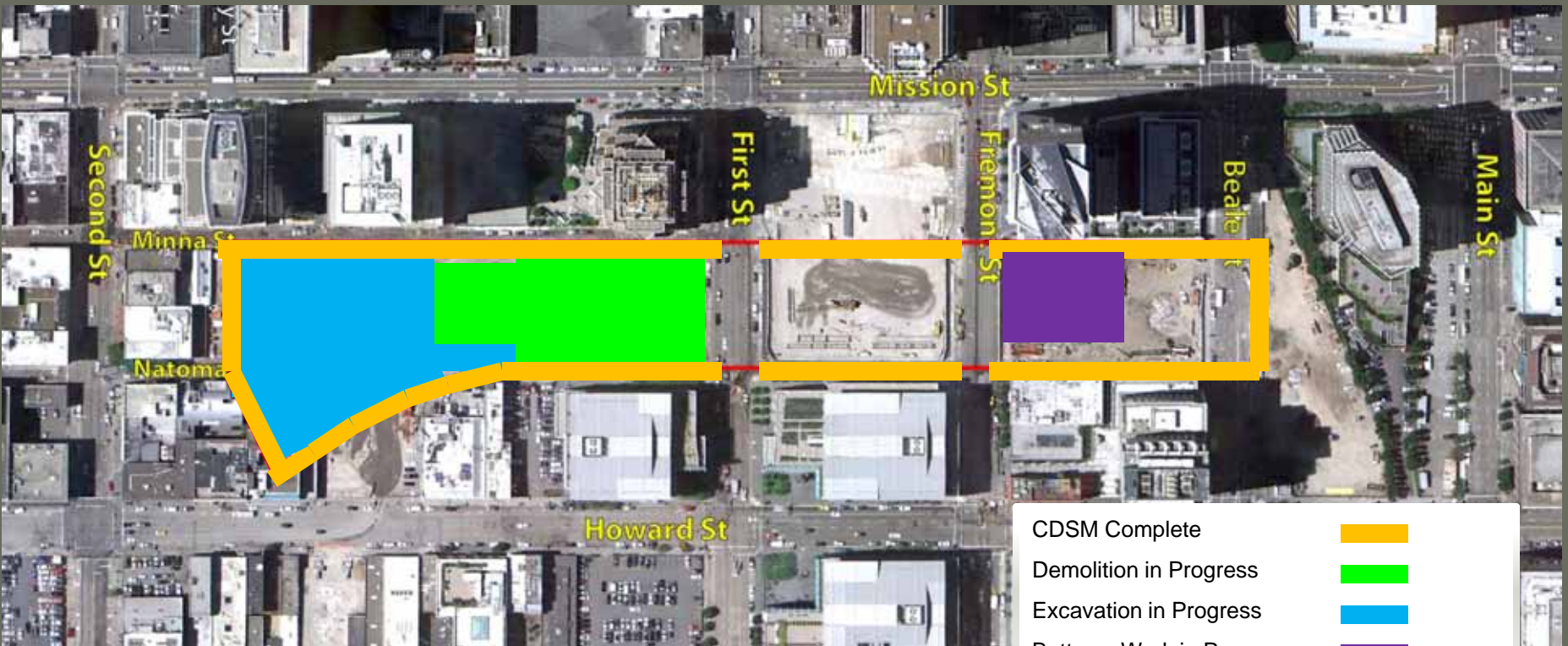
January 31, 2012 BSE Status

2011

2012

2013

2014





Transbay Transit Center

Buttress Progress





Transbay Transit Center

Buttress Progress





Transbay Transit Center

Traffic Bridges and Trestle



Transbay Transit Center

Traffic and Trestle Bridges

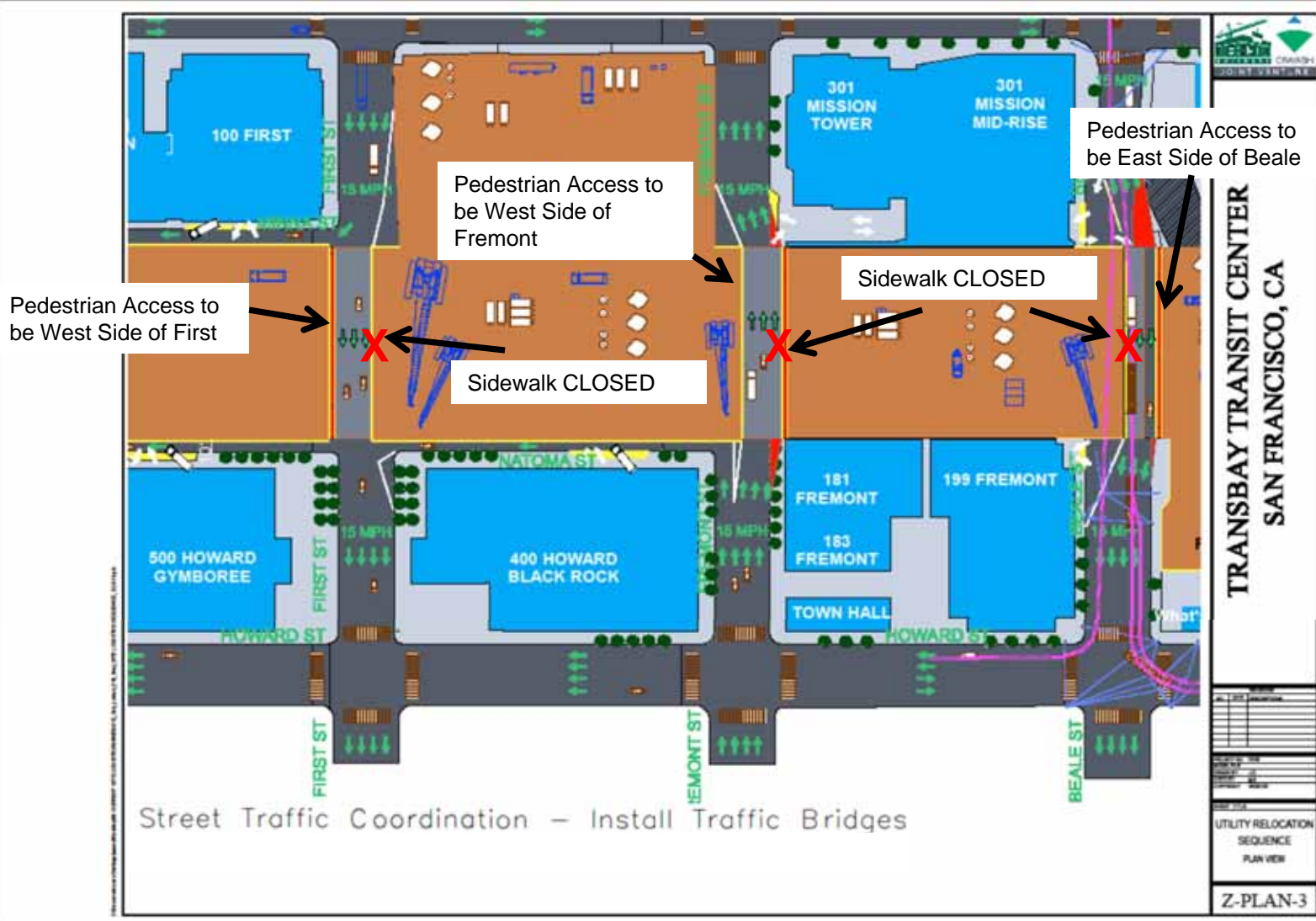


- Bridges will carry traffic on First, Fremont and Beale Streets during the excavation and construction of the train box
- 30 foot wide trestle running the length of the site will serve as the primary work access point during excavation and train box construction



Transbay Transit Center

Street Crossings – Traffic Bridge Locations



Street Traffic Coordination – Install Traffic Bridges

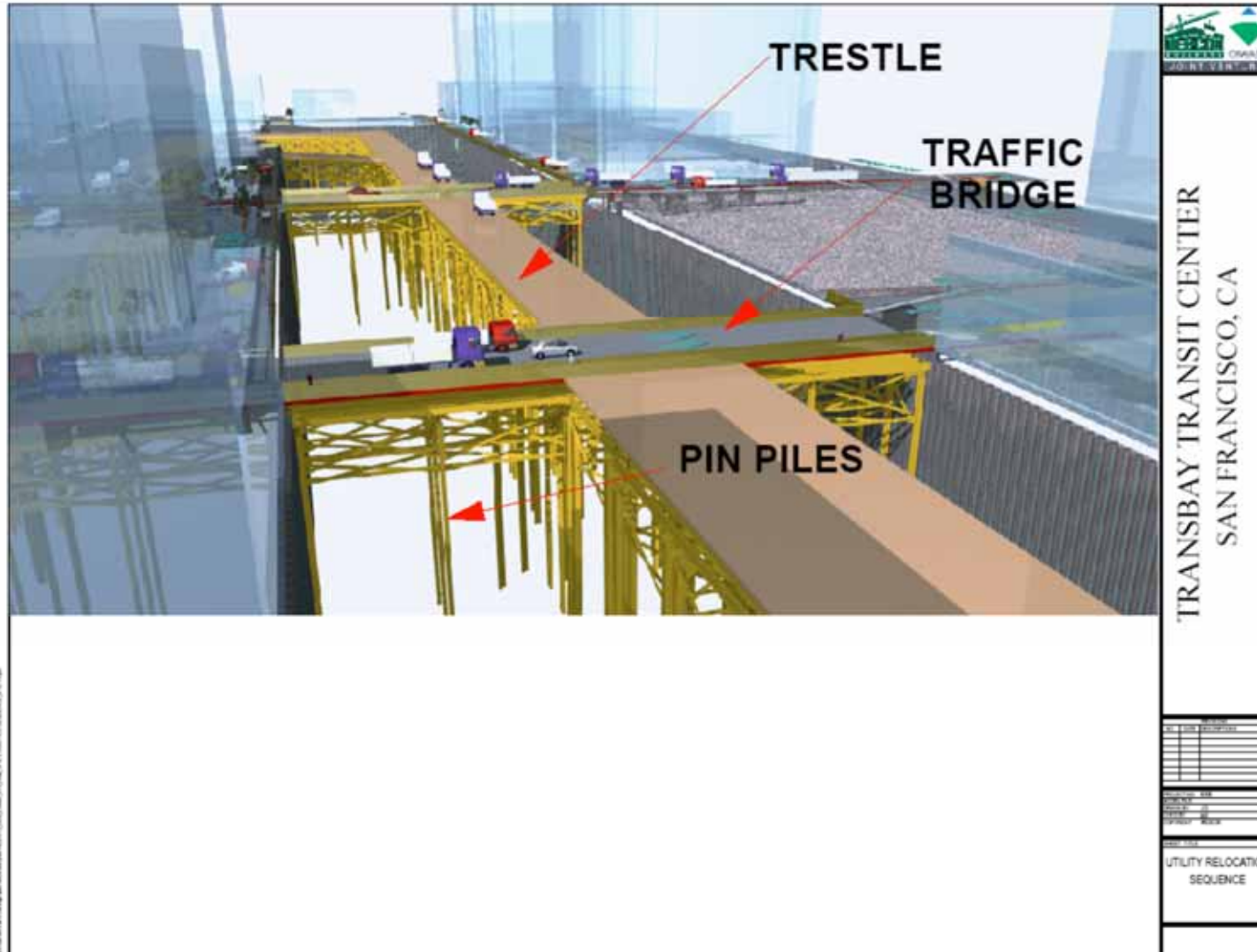
TRANSBAY TRANSIT CENTER
SAN FRANCISCO, CA

UTILITY RELOCATION
SEQUENCE
PLAN VIEW
Z-PLAN-3



Transbay Transit Center

Traffic Bridge Elements



© 2008 Jacobs Engineering Group, Inc. All rights reserved. This drawing is the property of Jacobs Engineering Group, Inc. and is not to be distributed, copied, or used in any way without the written consent of Jacobs Engineering Group, Inc.



Transbay Transit Center

Traffic Bridge Installation

- **First Street Bridge**
 - Pin pile support installation, CDSM wall installation and abutment installation, all requiring lane closures, to begin March 5, 2012.
 - Prefabricated to be installed with full street closure over Memorial Day Weekend.
- **Fremont Street Bridge**
 - Pin pile support installation, CDSM wall installation and abutment installation, all requiring lane closures, start TBD.
 - Prefabricated to be installed with full street closure over Labor Day Weekend.
- **Beale Street Bridge**
 - Pin pile support installation and abutment installation, all requiring lane closures, start TBD.
 - Prefabricated to be installed with full street closure over Veteran's Day Weekend.



Transbay Transit Center

Excavation



Transbay Transit Center

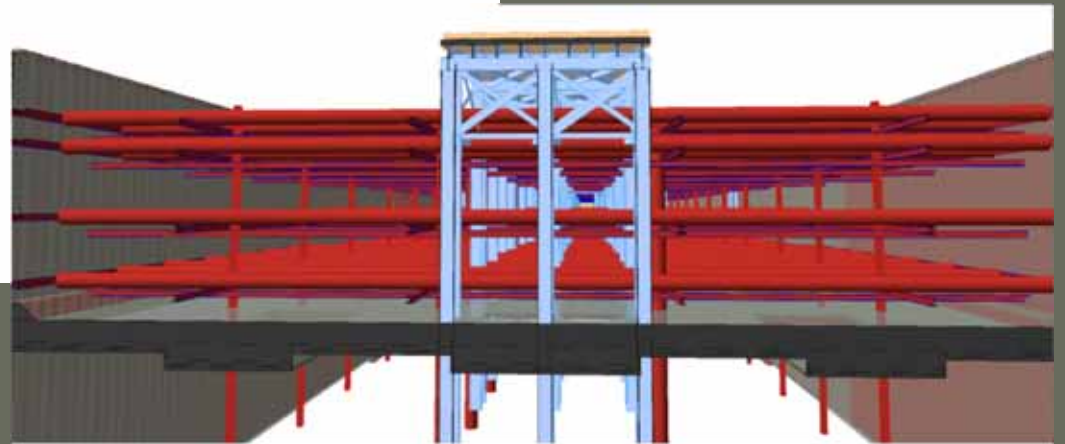
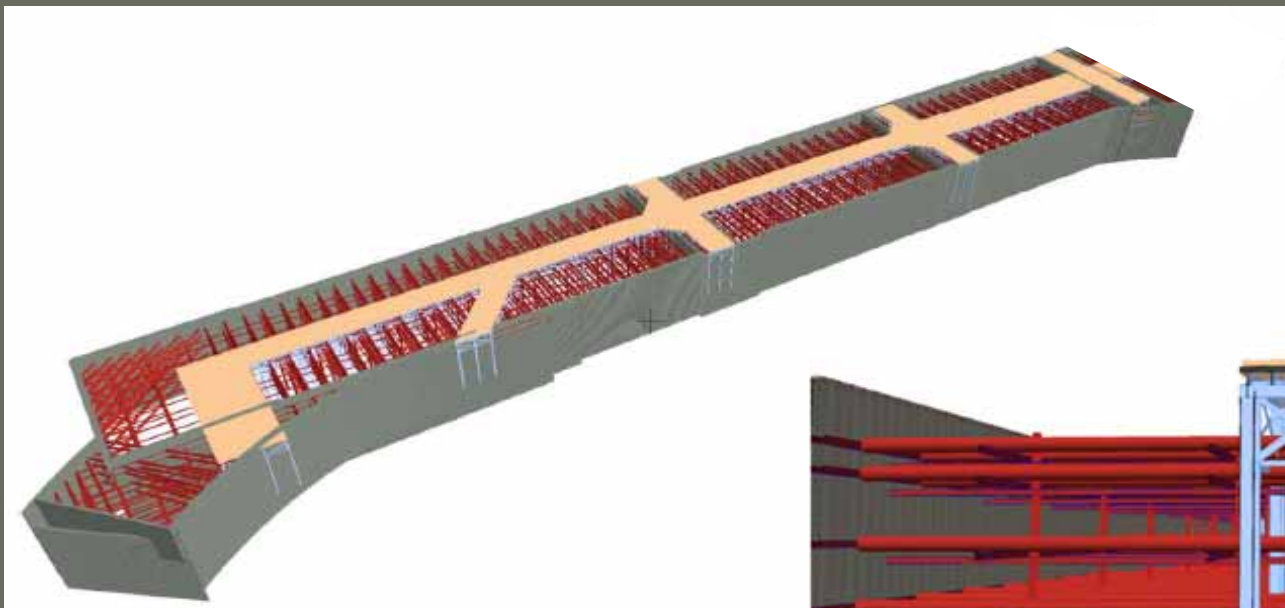
Excavation and Bracing

2011

2012

2013

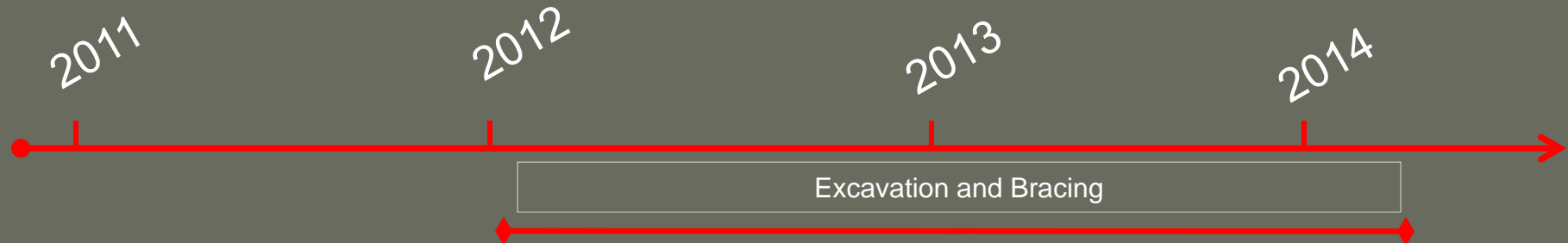
2014





Transbay Transit Center

Excavation and Bracing

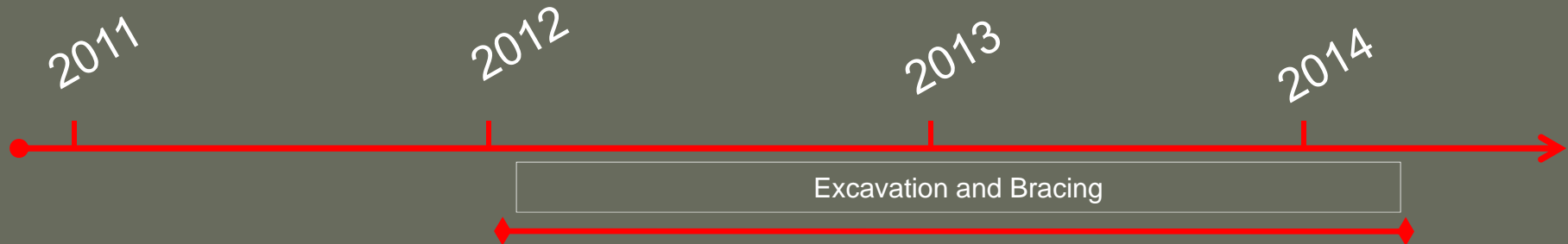


- Contractor will begin excavation at the west end of the site and progressing towards the east end
- Five levels - or lifts - of material will be removed
- More than half a million cubic yards of material will be removed
- Four levels of bracing will be installed as excavation progresses to provide support to the shoring walls



Transbay Transit Center

Excavation and Bracing

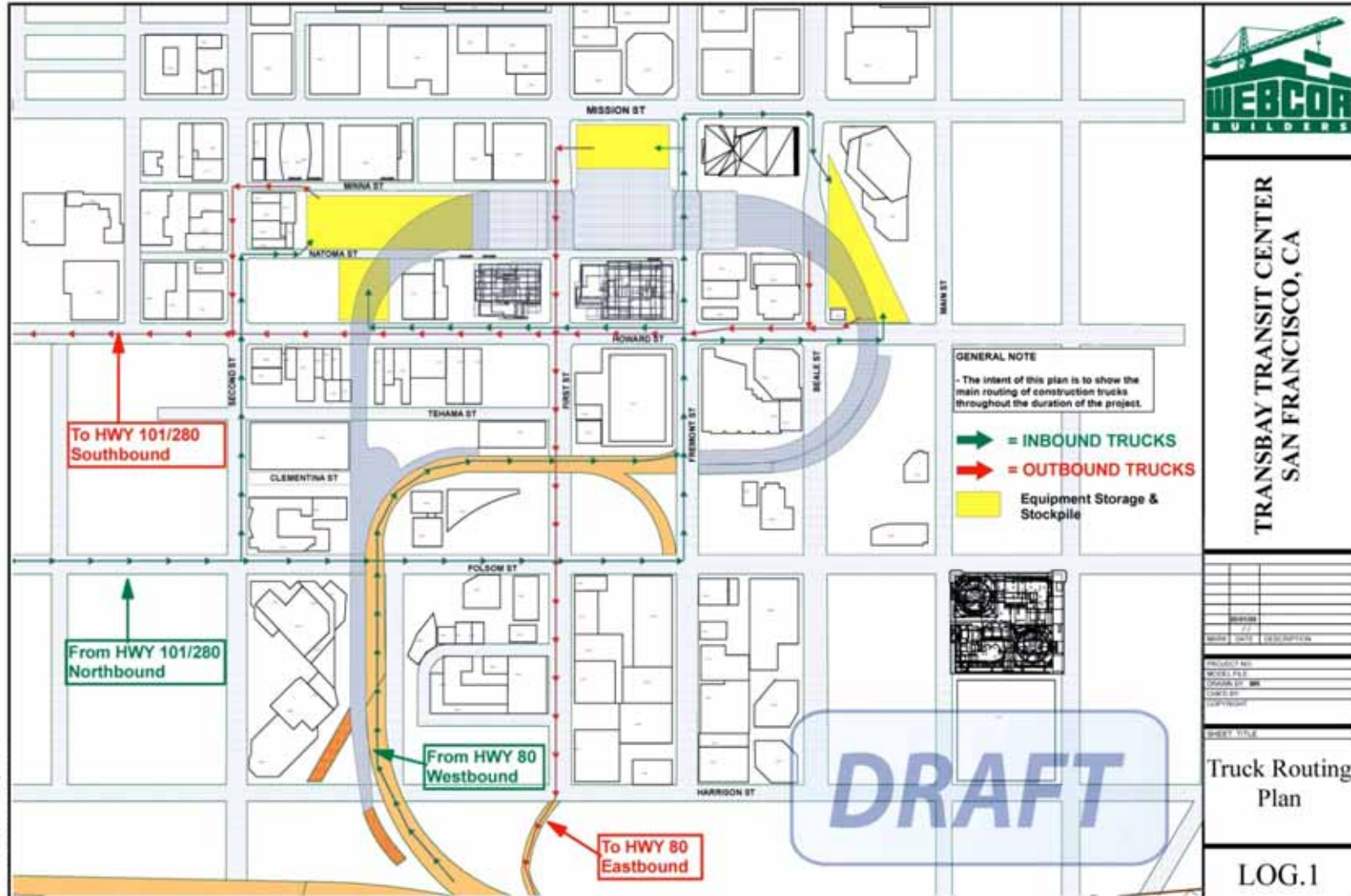


- Excavation will be conducted on two shifts
- Bracing will be installed primarily on day shift with welding on two shifts



Transbay Transit Center

Freeway Access/Truck Routing Plan



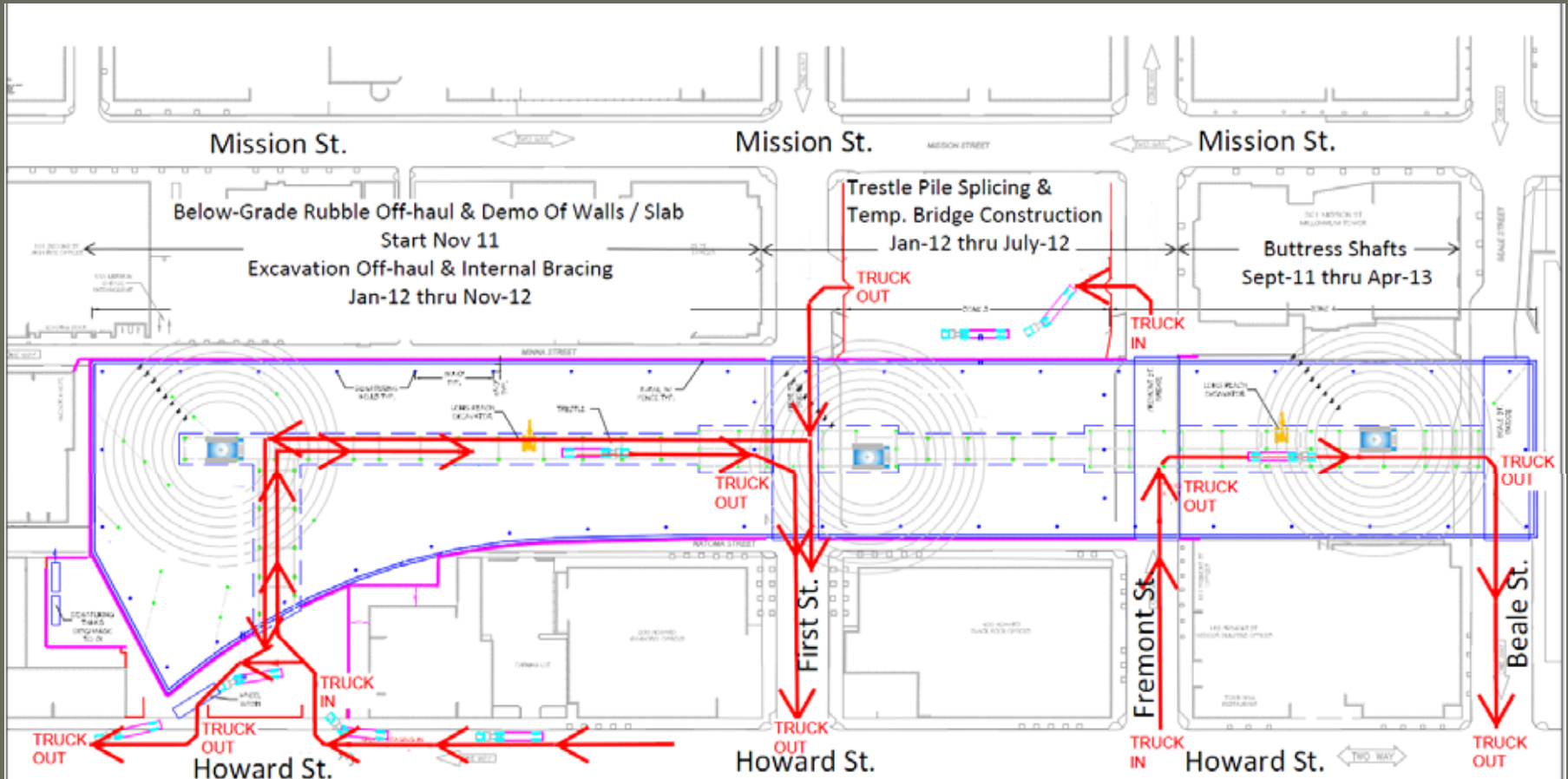
TRANSBAY TRANSIT CENTER
SAN FRANCISCO, CA

© 2011 Webcor Builders, Inc. All rights reserved. 11/07/11



Transbay Transit Center

Mass Excavation Truck Routing Plan



Truck Routing For Excavation





Transbay Transit Center

West End Excavation





Transbay Transit Center

West End Excavation





Transbay Transit Center

West End Excavation





Transbay Transit Center

West End Excavation – Bracing Start





Transbay Transit Center

What's Next



Transbay Transit Center

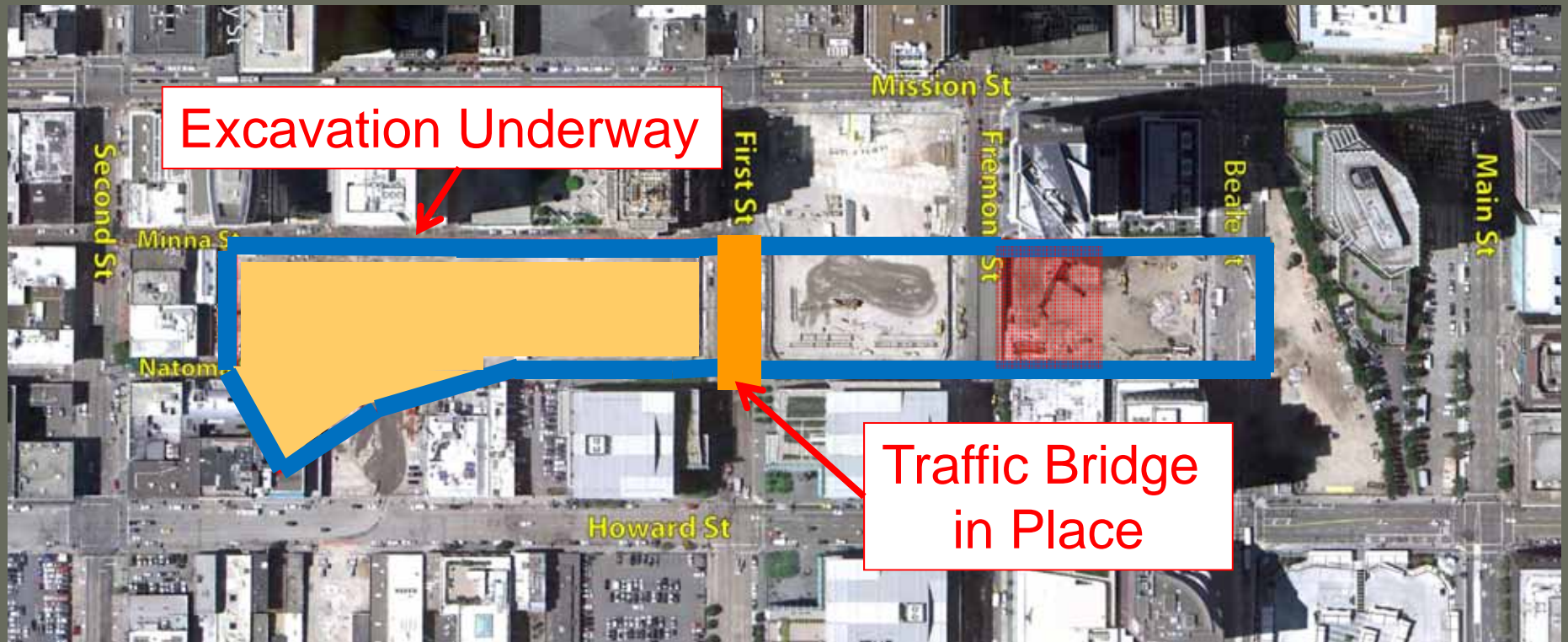
June 2012

2011

2012

2013

2014





Transbay Transit Center

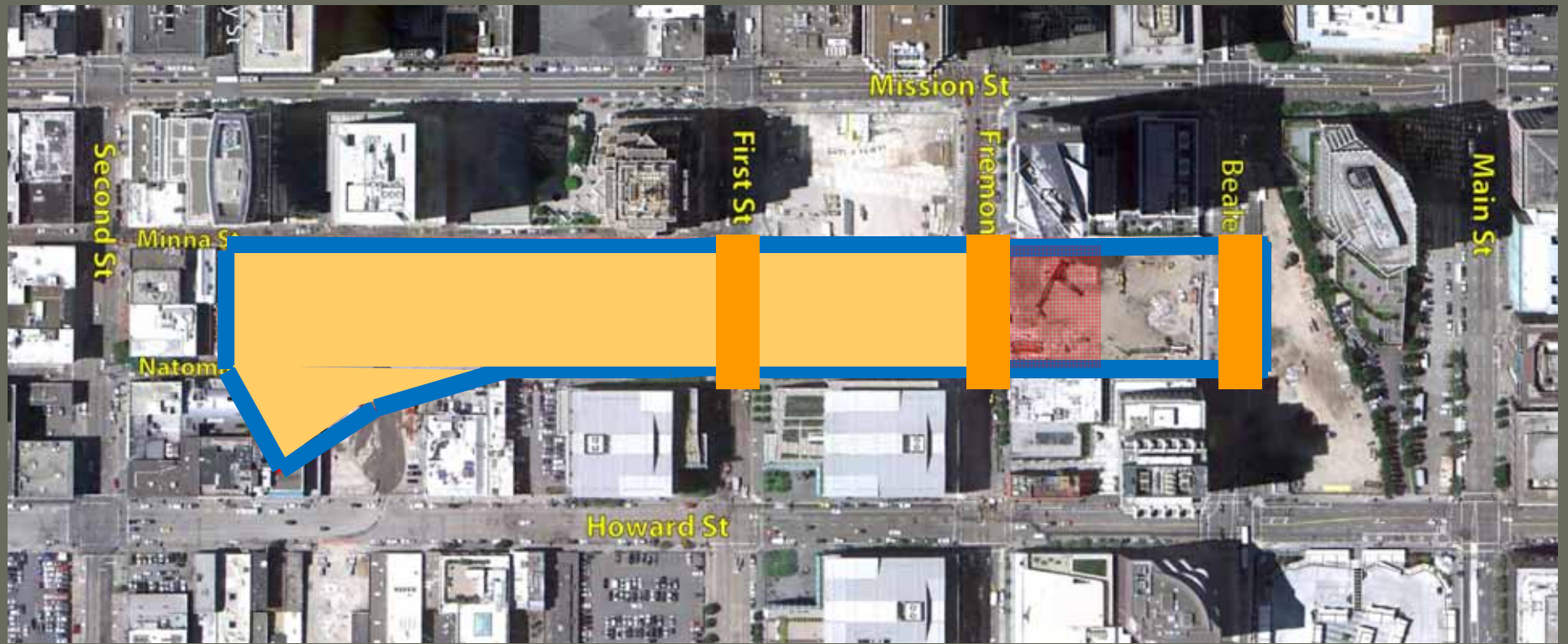
November 2012

2011

2012

2013

2014





Transbay Transit Center

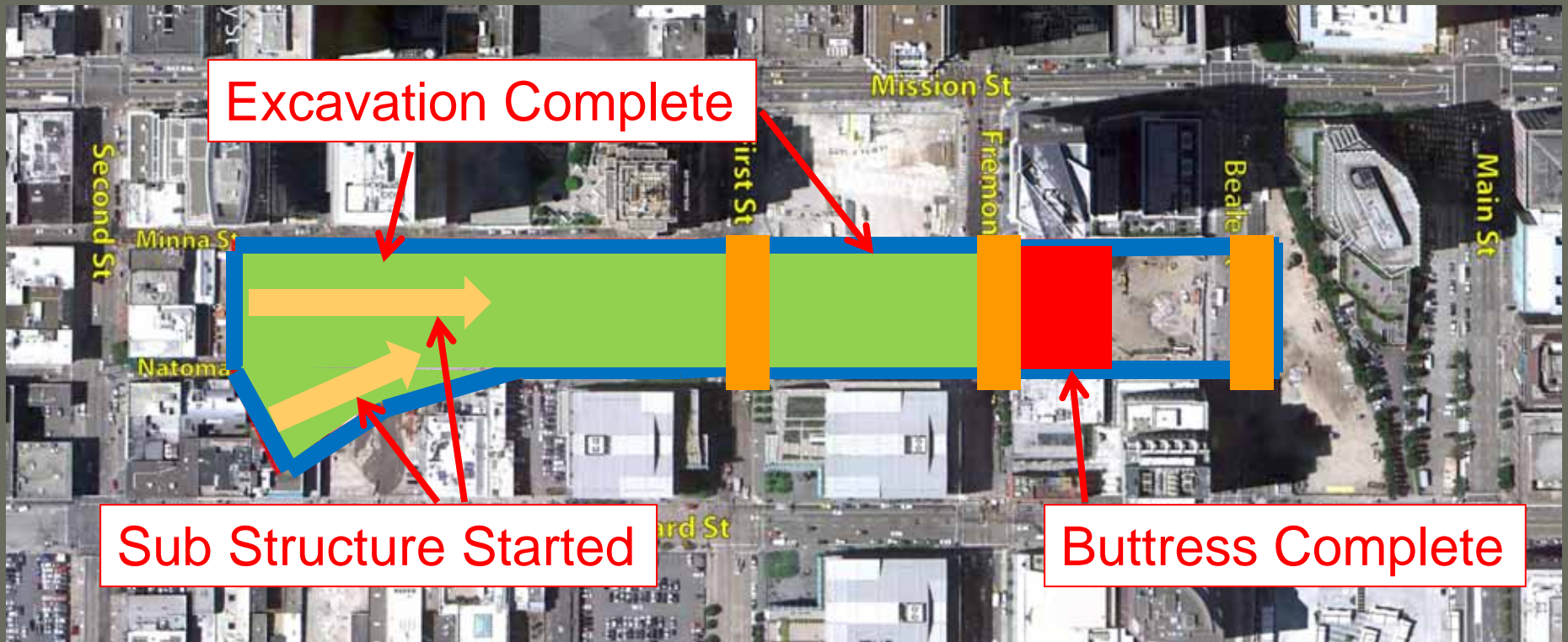
April 2013

2011

2012

2013

2014





Transbay Transit Center

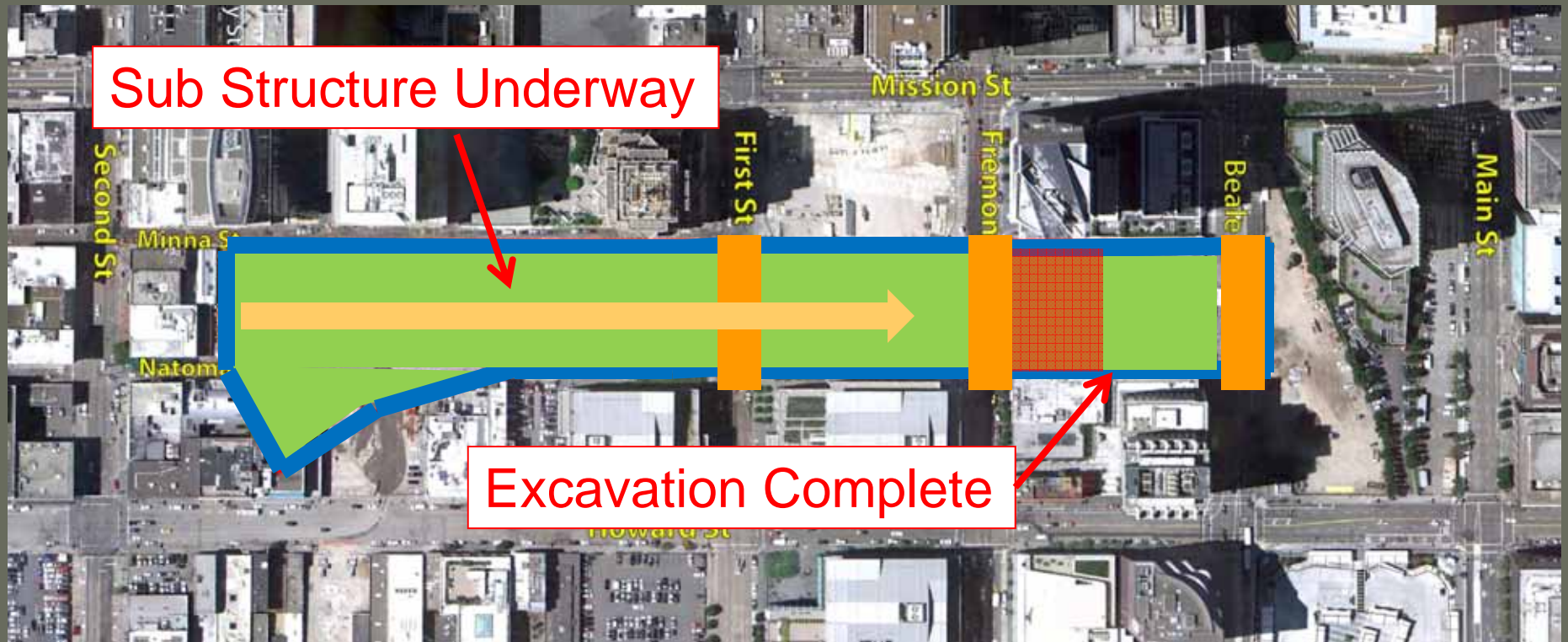
February 2014

2011

2012

2013

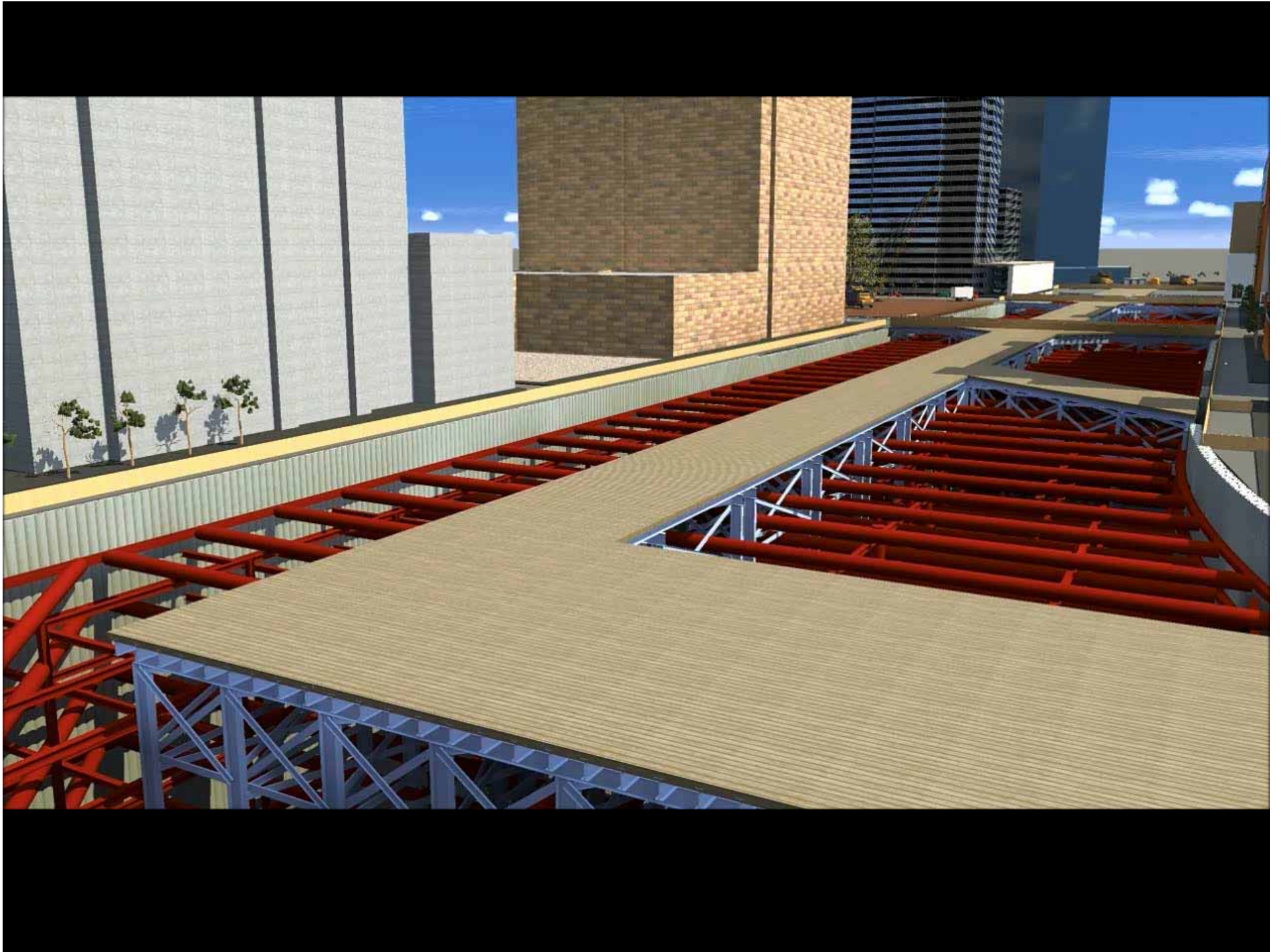
2014





Transbay Transit Center

Model Video





Transbay Transit Center

Questions?