



## Bus Storage Facility

May 21, 2012 –Neighborhood Outreach Mtg.

# Transbay Transit Center

TJPA

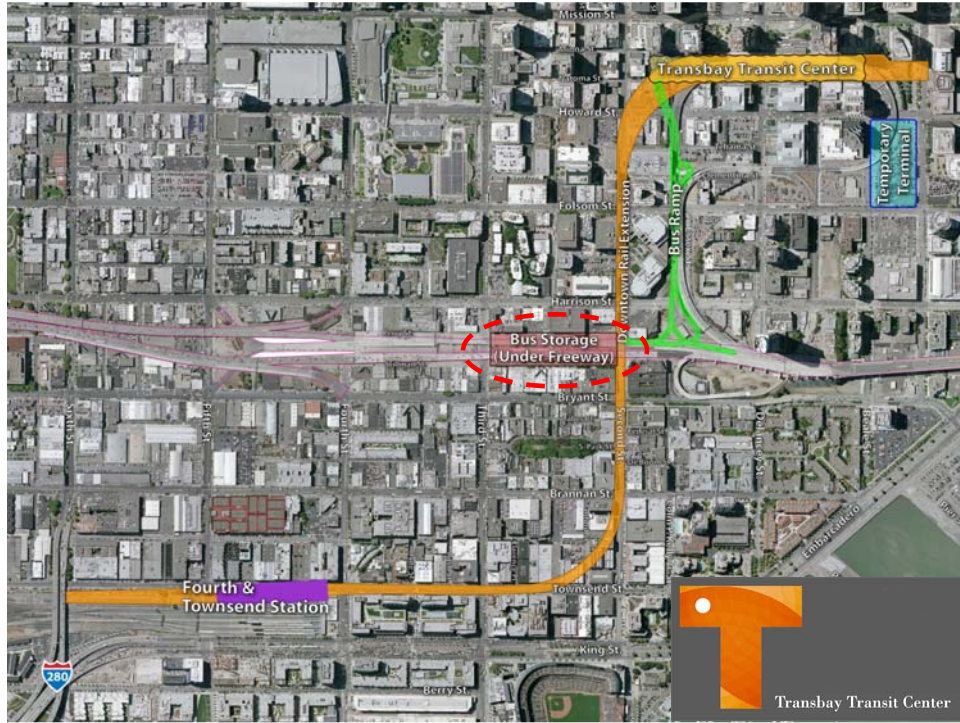



Transbay Transit Center

## Agenda

- Project Site
- Site Layout
- Wall Elevations/Sections
- Site Archaeology
- Project Schedule
- Questions


TJPA






Transbay Transit Center

## BSF Project Site





Second Street





Transbay Transit Center

## BSF Project Site



Stillman Street



Transbay Transit Center

## BSF Project Site



Third Street





Transbay Transit Center

## BSF Project Site

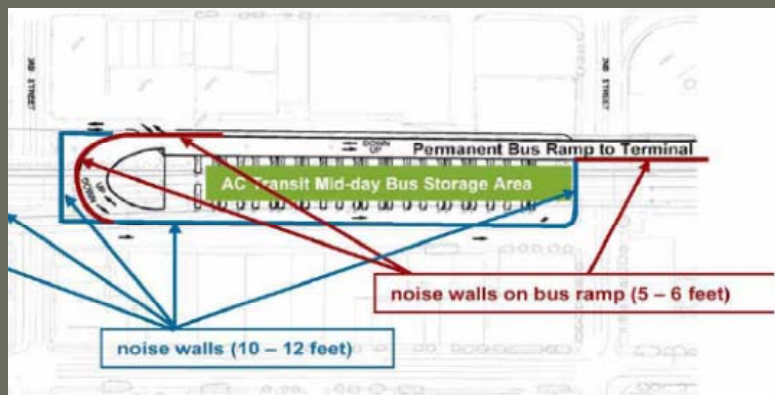


Perry Street



Transbay Transit Center

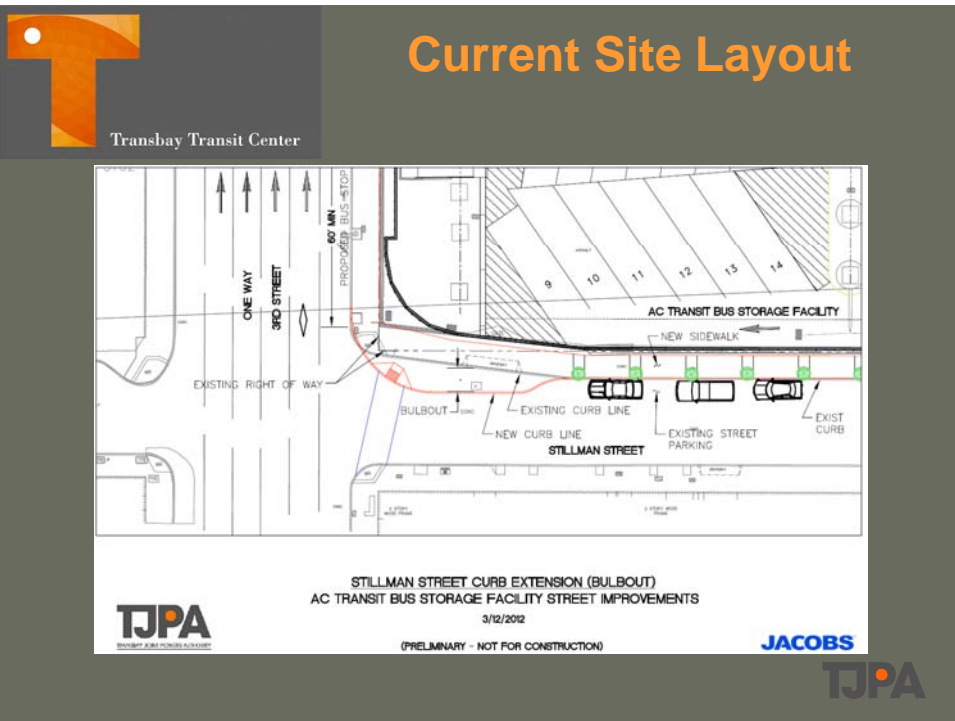
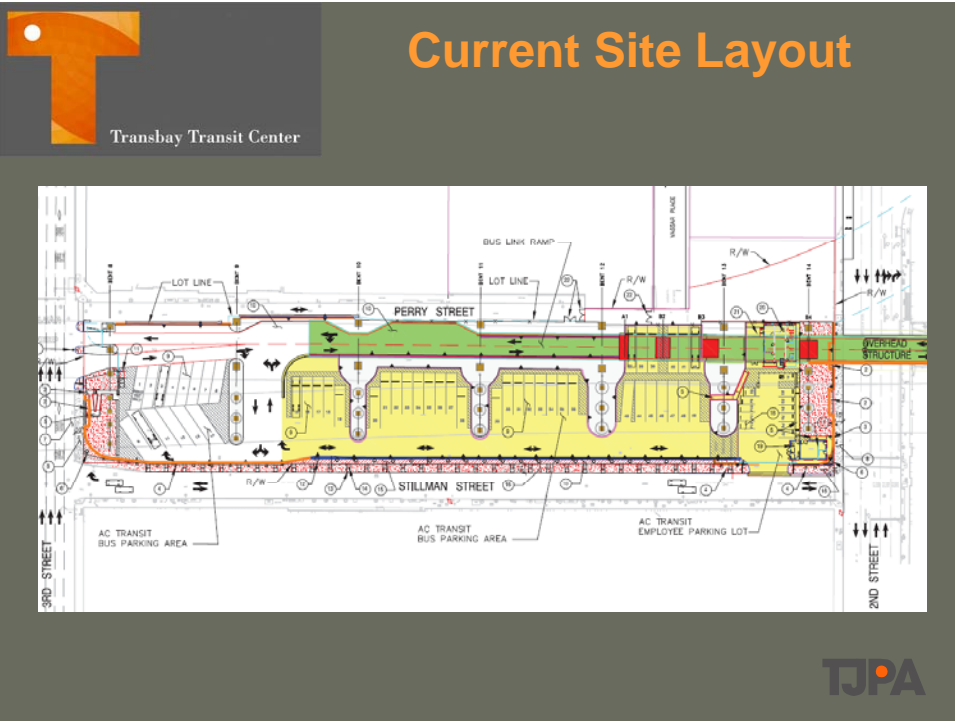
## Schematic Layout

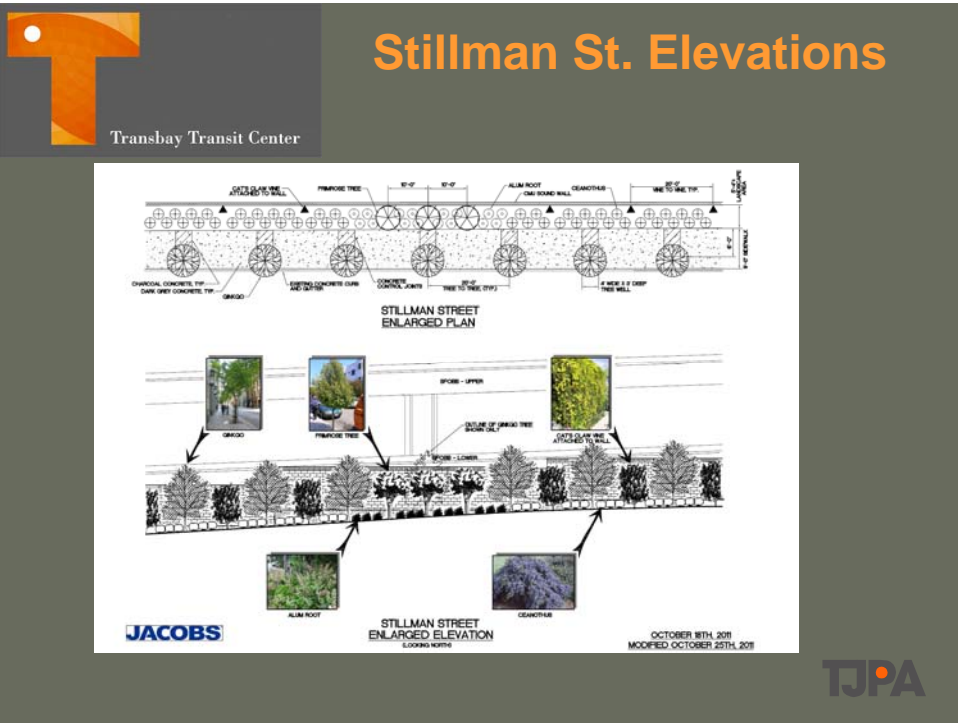


FEIS/FEIR Figure 2.2-6



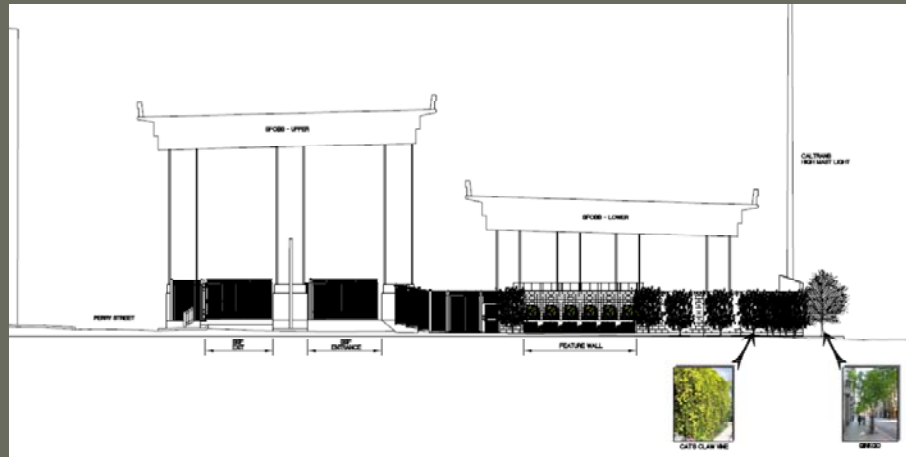




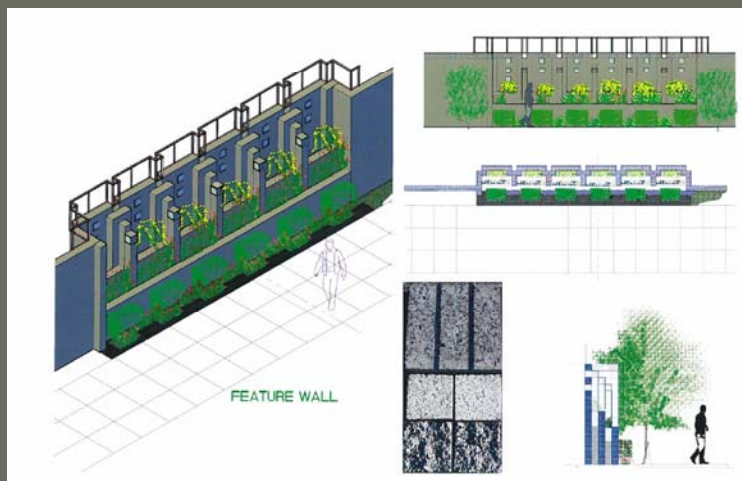




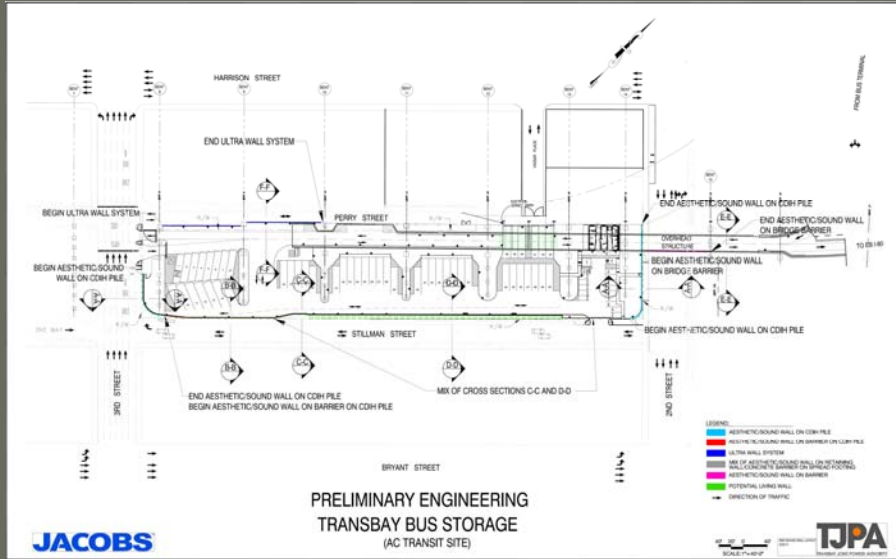
## 3<sup>rd</sup> Street Elevation (looking east)



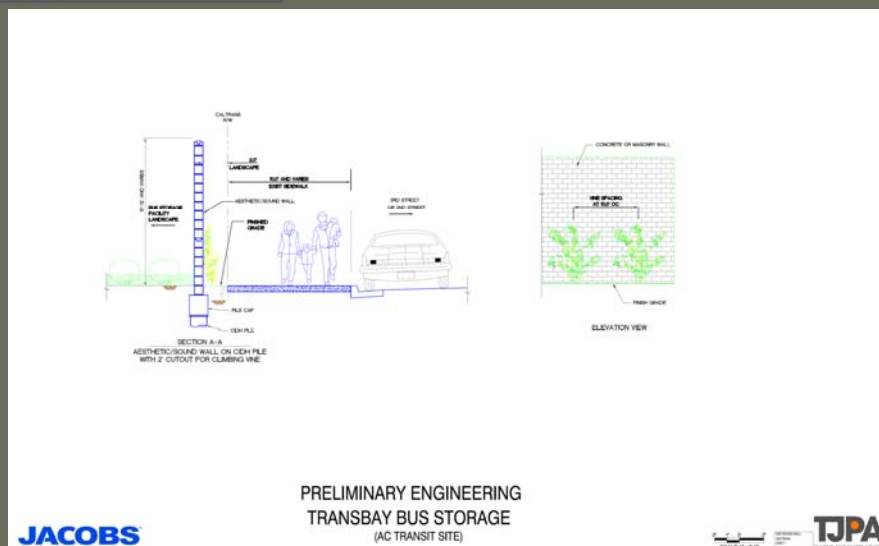
## Feature Wall



# Soundwalls



# Wall Section A-A

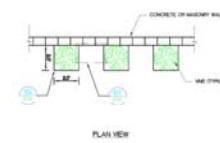
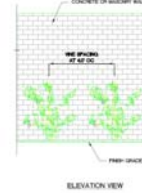
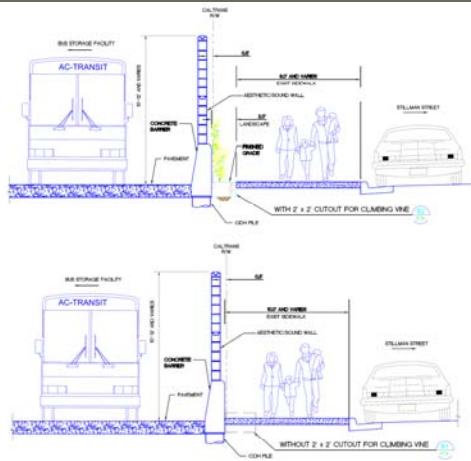






Transbay Transit Center

# Wall Section B-B



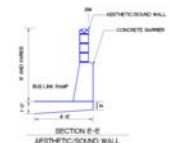
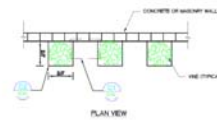
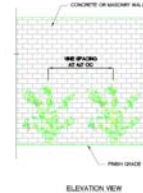
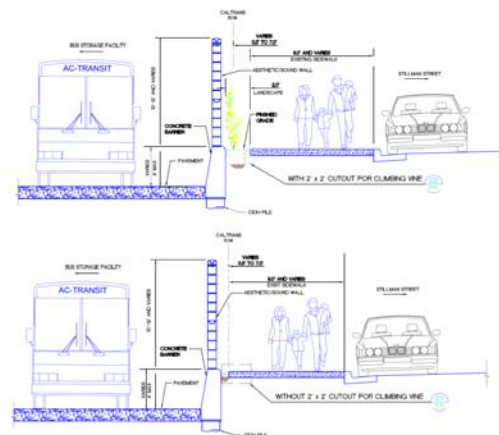
SECTION B-B  
AESTHETIC SOUND WALL  
ON BARRIER ON CEILING

PRELIMINARY ENGINEERING  
TRANSBAY BUS STORAGE  
(AC TRANSIT SITE)



Transbay Transit Center

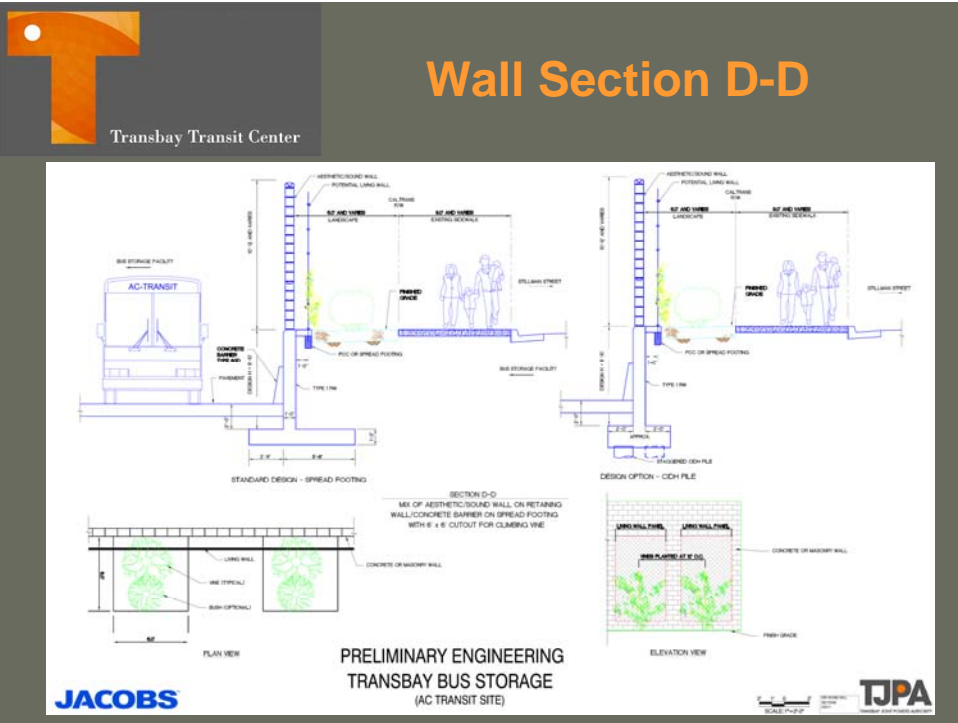
# Wall Section C-C



SECTION C-C  
AESTHETIC SOUND WALL  
WITH BARRIER ON CEILING  
ACTING AS RETAINING WALL

PRELIMINARY ENGINEERING  
TRANSBAY BUS STORAGE  
(AC TRANSIT SITE)





**Site Archaeology**

AC-TRANSIT  
Transbay Transit Center

- William Self, Assoc. draft Archaeological Treatment Plan (Dec. 2011)
- Analyzed fire maps, photos, renderings, previous disturbances, etc.
- Educational Institutions:
  - Calif. Collegiate Institute For Young Ladies (1861-1869)
  - Silver Street Kindergarten: 1<sup>st</sup> free kindergarten west of Rockies
  - Longfellow School
  - Rincon Grammar School
- Recommended Testing
  - Prehistoric Era
  - Historic Era (Gold Rush, industrial period)

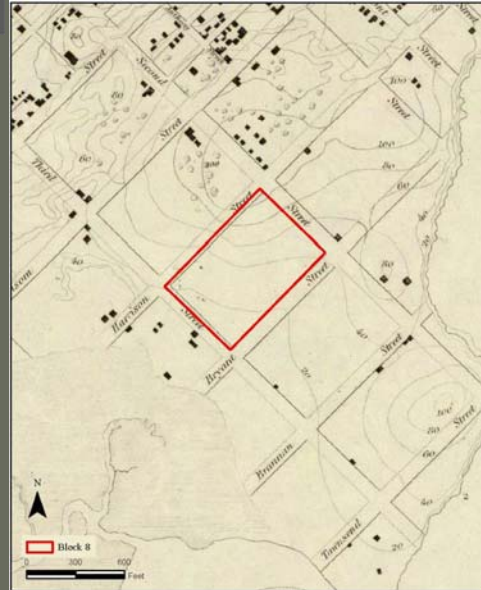
TJPA



Transbay Transit Center

## Site Archaeology

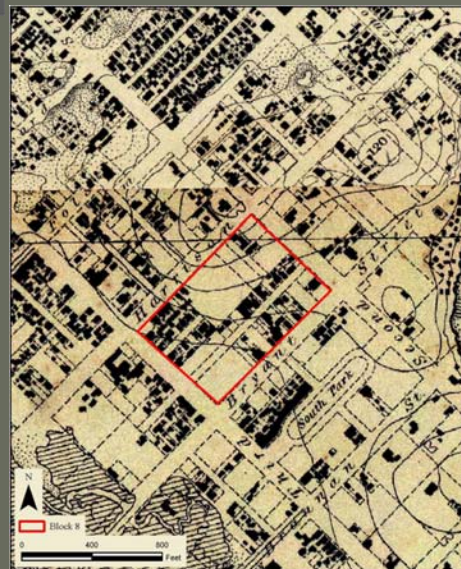
1853 US Coast  
Survey Map



Transbay Transit Center

## Site Archaeology

1859 US Coast  
Survey Map



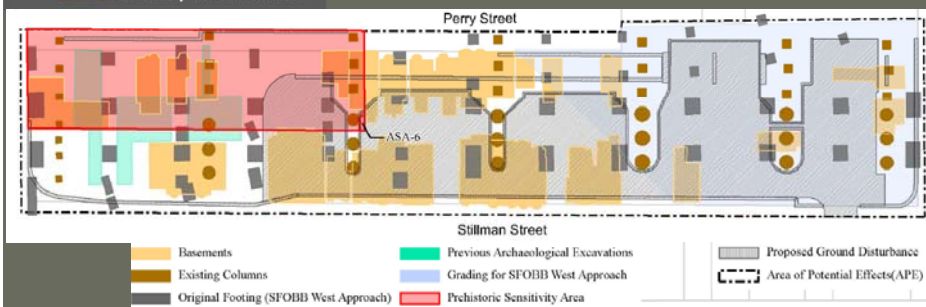


# Site Archaeology

1868 San Francisco  
Bird's Eye View



# Site Archaeology- Pre-Historic Testing

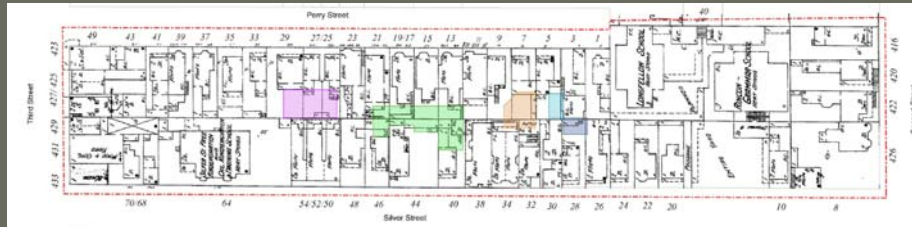


| ASA     | Trench Max. Length (ft.) | Trench Max. Width (ft.) | Trench Max. Depth (ft.) | Project Impact   | Archaeological Resource Type |
|---------|--------------------------|-------------------------|-------------------------|--|------------------------------|
| ASA 8-1 | 55                       | 40                      | 3                       | Grading to accommodate bus parking to 3 feet bgs   | Historic – rear yard         |
| ASA 8-2 | 90                       | 34                      | 8                       | Retaining wall at west end beside bent 10 to 8 feet bgs and grading to accommodate bus parking to 5.5 feet bgs | Historic – rear yard         |
| ASA 8-3 | 25                       | 17                      | 11                      | Retaining wall at west end beside bent 11 to 11 feet bgs and grading to accommodate bus parking to 7 feet bgs  | Historic – rear yard         |
| ASA 8-4 | 28                       | 15                      | 8                       | Grading to accommodate bus parking to 8 feet bgs   | Historic – rear yard         |
| ASA 8-5 | 25                       | 15                      | 8                       | Grading to accommodate bus parking to 8 feet bgs   | Historic – rear yard         |
| ASA 8-6 | 14                       | 5                       | 8                       | Retaining wall along west edge beside bent 10 to 8 feet bgs  | Prehistoric                  |

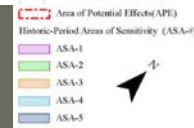




# Site Archaeology- Historic Testing



| ASA     | Trench Max. Length (ft.) | Trench Max. Width (ft.) | Trench Max. Depth (ft.) | Project Impact   | Archaeological Resource Type |
|---------|--------------------------|-------------------------|-------------------------|--|------------------------------|
| ASA 8-1 | 55                       | 40                      | 3                       | Grading to accommodate bus parking to 3 feet bgs   | Historic – rear yard         |
| ASA 8-2 | 90                       | 34                      | 8                       | Retaining wall at west end beside bent 10 to 8 feet bgs and grading to accommodate bus parking to 5.5 feet bgs | Historic – rear yard         |
| ASA 8-3 | 25                       | 17                      | 11                      | Retaining wall at west end beside bent 11 to 11 feet bgs and grading to accommodate bus parking to 7 feet bgs  | Historic – rear yard         |
| ASA 8-4 | 28                       | 15                      | 8                       | Grading to accommodate bus parking to 8 feet bgs   | Historic – rear yard         |
| ASA 8-5 | 25                       | 15                      | 8                       | Grading to accommodate bus parking to 8 feet bgs   | Historic – rear yard         |
| ASA 8-6 | 14                       | 5                       | 8                       | Retaining wall along west edge beside bent 10 to 8 feet bgs  | Prehistoric                  |



# Project Schedule

|   |             |
|---|-------------|
| <b>Construction Mgr. Contract Approval:</b> | 3/12        |
| <b>Caltrans Coordination:</b>               | 3/12- 12/12 |
| •Structural Mitigation Analysis/Design      |             |
| •PSR/PR with APS's                          |             |
| <b>65% Submittal:</b>                       | 8/12        |
| <b>95% Submittal:</b>                       | 12/12       |
| <b>100% Submittal:</b>                      | 2/13        |
| <b>Permits:</b>                             | 3/13        |
| <b>Advertise/Bid/Award:</b>                 | 4/13 -6/13  |
| <b>Construction NTP:</b>                    | 7/13        |
| <b>BSF Operations:</b>                      | 10/14       |







Questions?



## CONTACT INFORMATION

**Transbay Joint Powers Authority**

201 Mission Street, Suite 2100

San Francisco, CA 94105

(415) 597-4620

[www.transbaycenter.org](http://www.transbaycenter.org)

