



CAC Construction Update

October 11, 2011

Transbay Transit Center

TJPA





Transbay Transit Center

Construction Update – Utility Relocation Work

- Utility Relocation Packages
 - **Water Relocation on Howard and Beale Streets.** All utility work completed in July. Pavement restoration to be completed by mid-month.
 - **Sewer and Sludge Relocation on Beale Street.** New sewer and sludge line and demolition of abandoned utilities completed. Pavement restoration on Beale Street completed in September. Final demolition and capping of the abandoned utilities on Mission Street will be completed later in the fall.
 - **Water, Sewer, and Joint Trench on Minna Street.** All utility work completed. Final pavement restoration will be completed by the end of November following CDSM wall work.
 - **Water and Sewer Relocation Natoma and Fremont Streets.** Water installation has been completed. All sewer work will be completed by end of October. Pavement restoration will be completed after CDSM pre-trenching is completed.
 - **Water and Sewer Relocation on Natoma and First Streets.** Sewer installation work is complete. Demolition and capping of abandoned utilities and final pavement restoration will be completed by the end of October.
 - **AWSS on Mission Street.** Work is scheduled to begin in the first quarter of 2012.



Transbay Transit Center

Utility Relocation



Sewer install, Natoma and Fremont

Pavement Restoration in progress,
|Natoma and Fremont





Transbay Transit Center

Utility Relocation



Pavement Restoration in progress,
Natoma at 2nd Street

Sidewalk Restoration, Howard Street





Transbay Transit Center

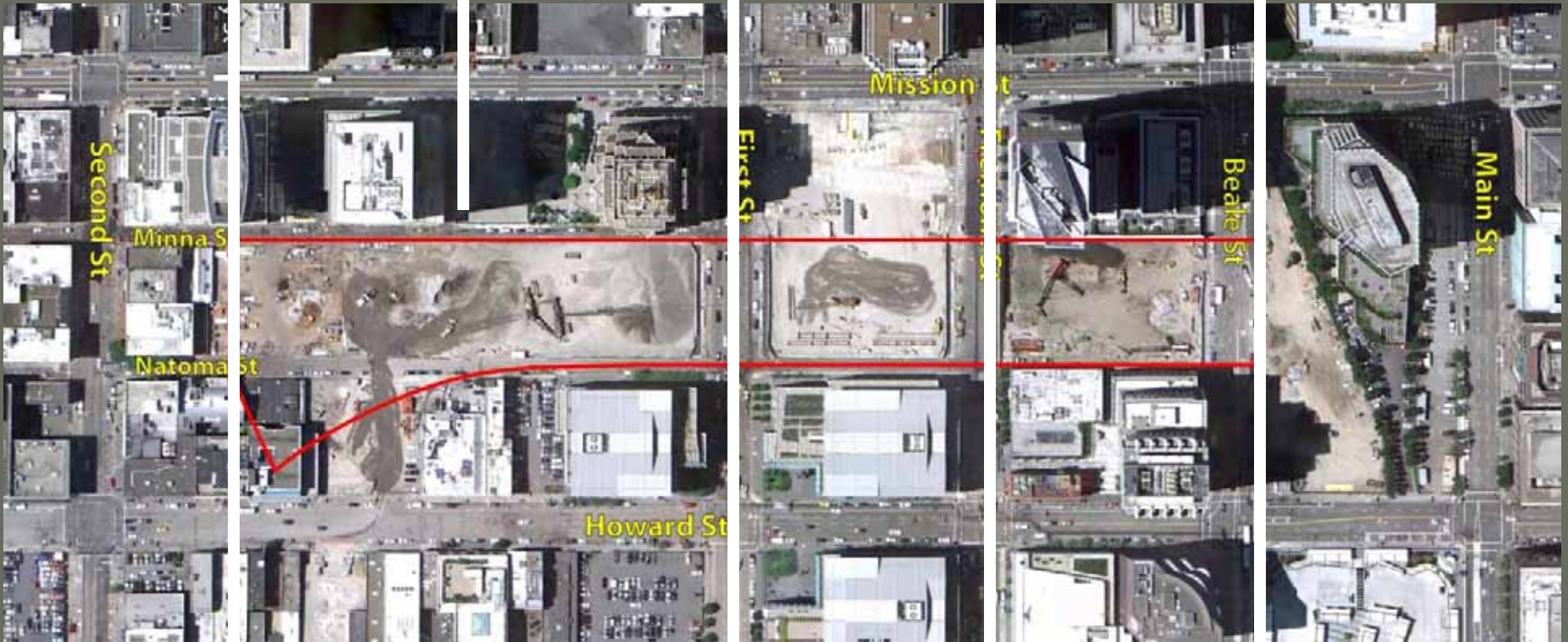
Transit Center Project Zones

Zone 1

Zone 2

Zone 3

Zone 4



West

Central

East



Transbay Transit Center

East Section Progress (Zone 4)



End of August 2011



End of September 2011



Transbay Transit Center

Central and West Sections Progress



End of August 2011

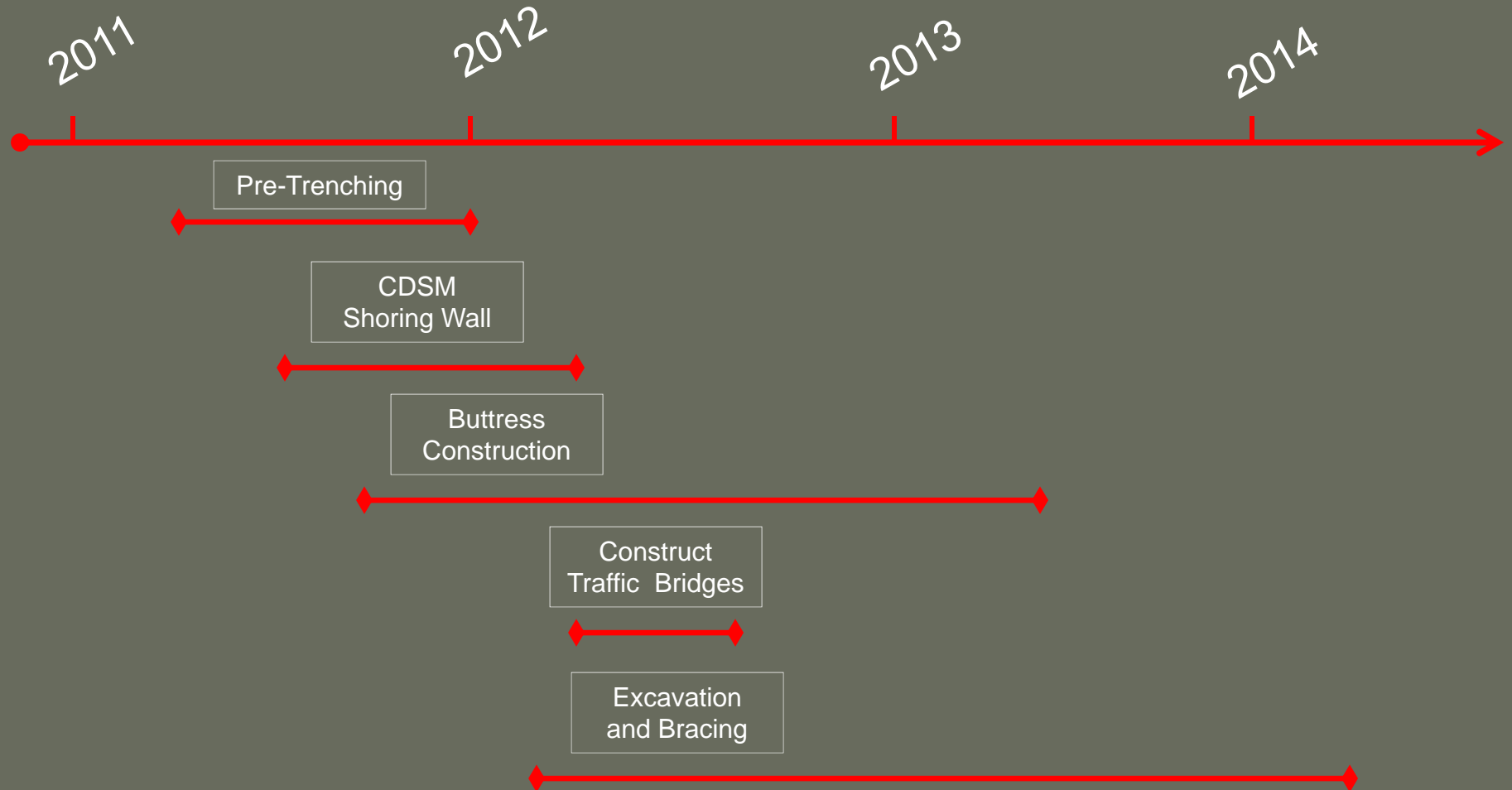


End of September 2011



Transbay Transit Center

BSE Timeline Summary





Transbay Transit Center

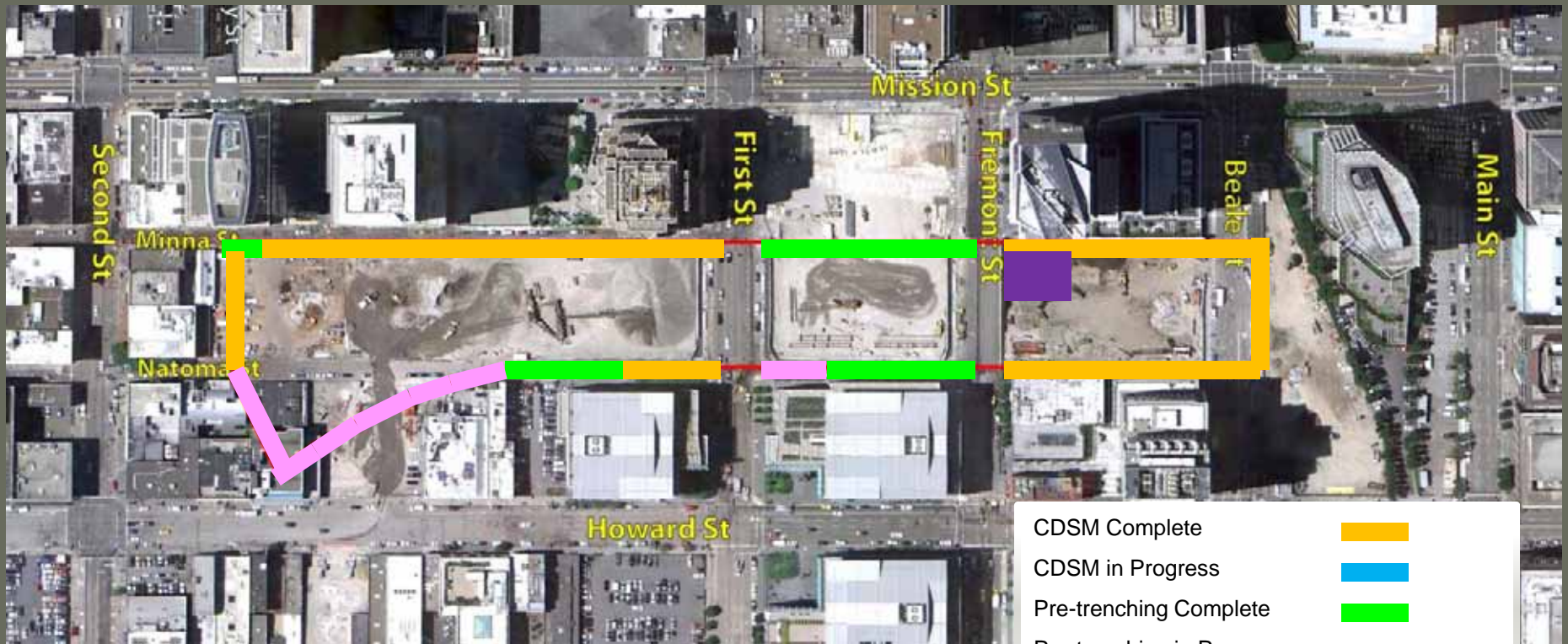
BSE Status

2011

2012

2013

2014



| | |
|---------------------------|---|
| CDSM Complete |  |
| CDSM in Progress |  |
| Pre-trenching Complete |  |
| Pre-trenching in Progress |  |
| Buttress Work in Progress |  |



Transbay Transit Center

Pre-Trenching



Minna Street, west end



Natoma Street, Zone 2



Natoma Street, Zone 1



Transbay Transit Center

CDSM Operation in Zone 4



Minna Street, Zone 2



Zone 1, west end



Transbay Transit Center

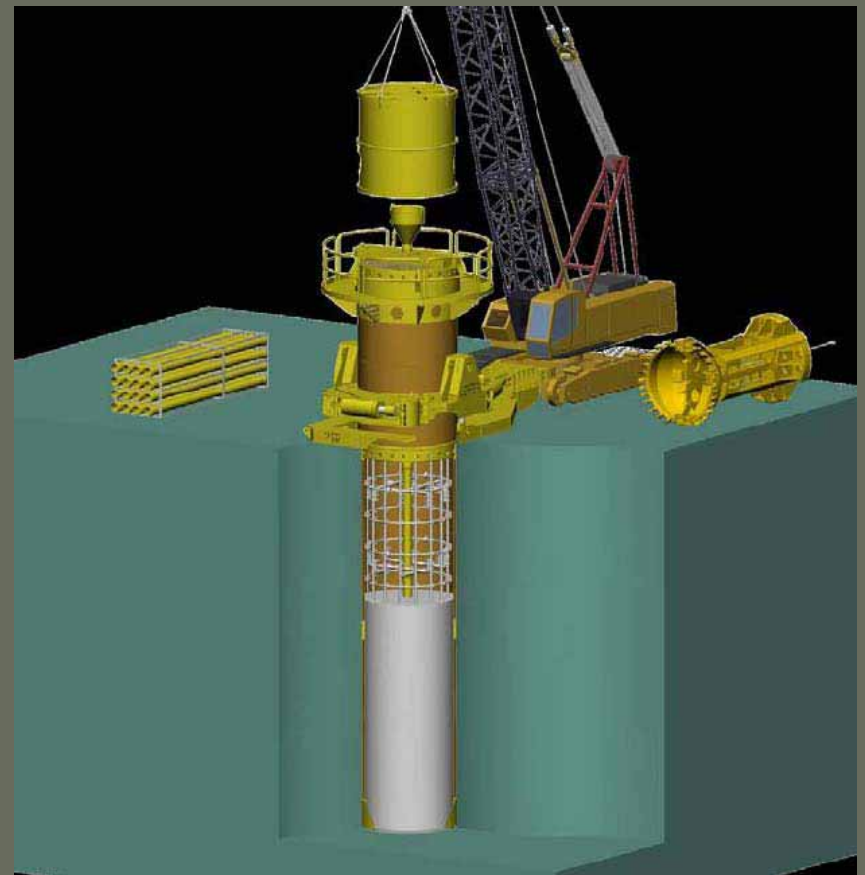
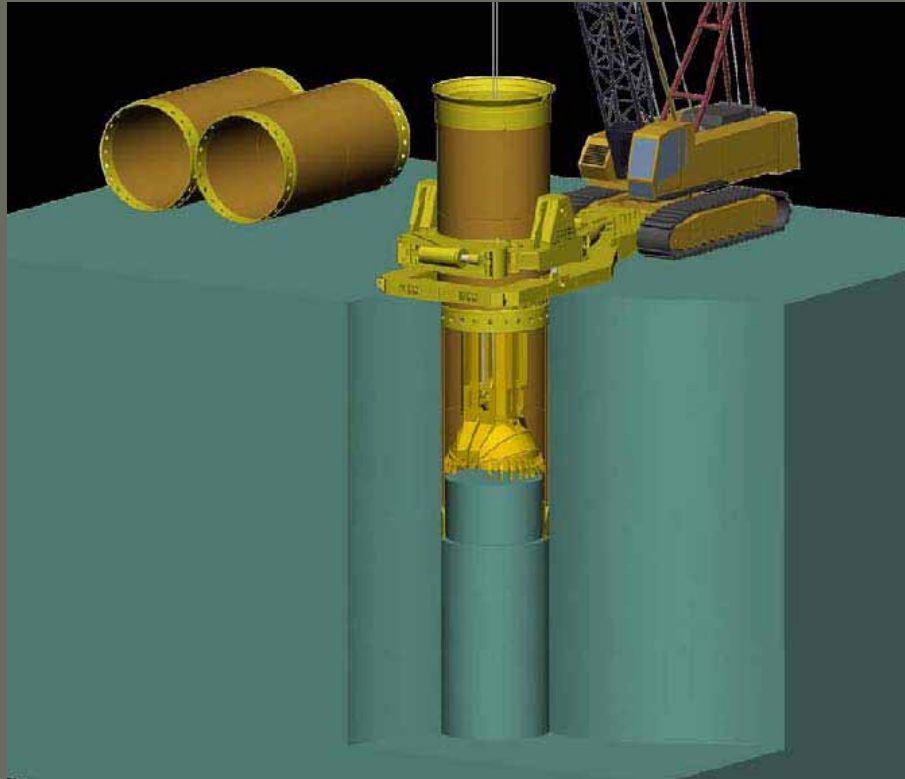
Buttress Construction





Transbay Transit Center

Buttress Construction





Transbay Transit Center

Buttress Shaft Operation





Transbay Transit Center

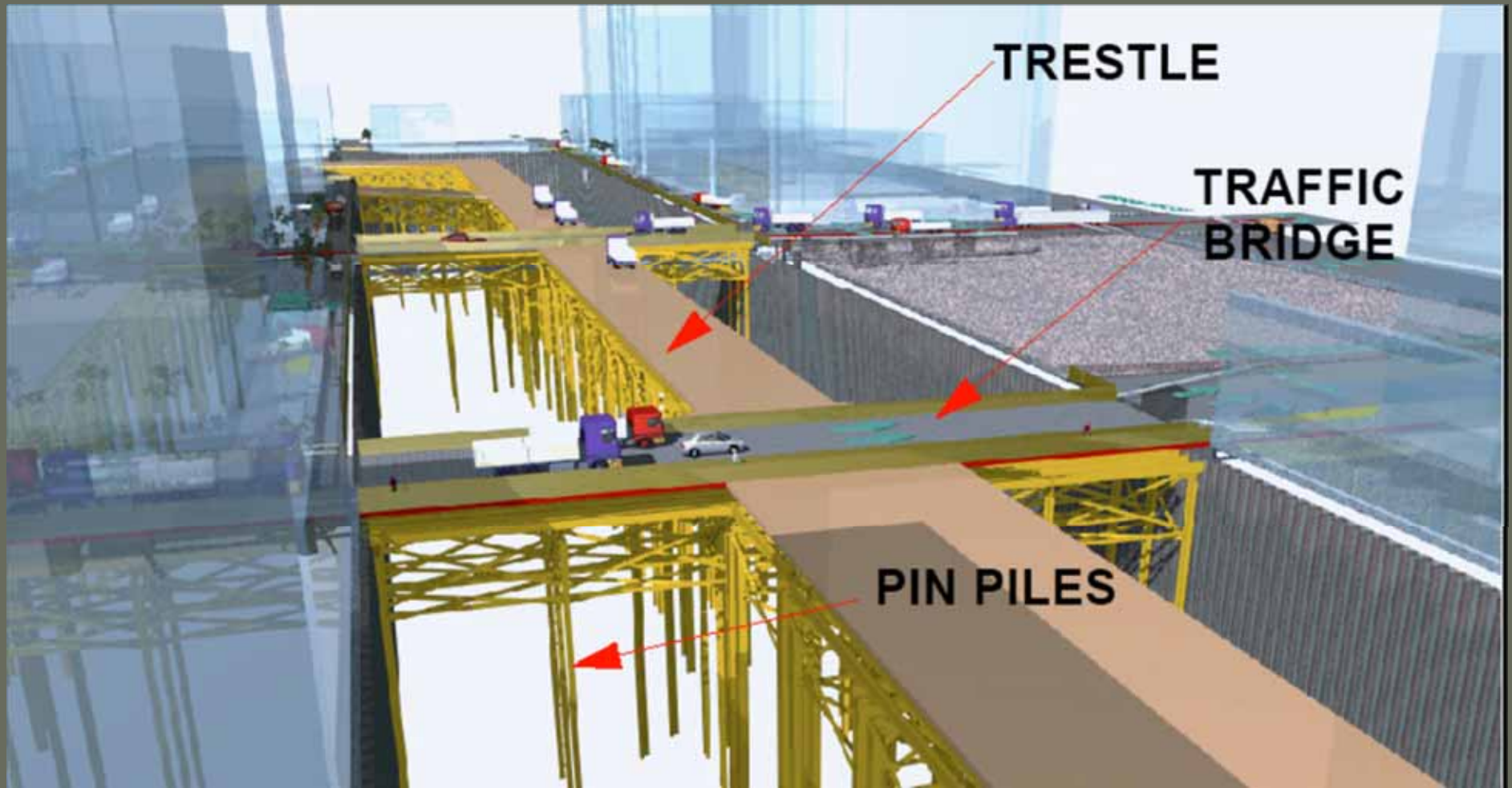
Buttress Shaft Operation





Transbay Transit Center

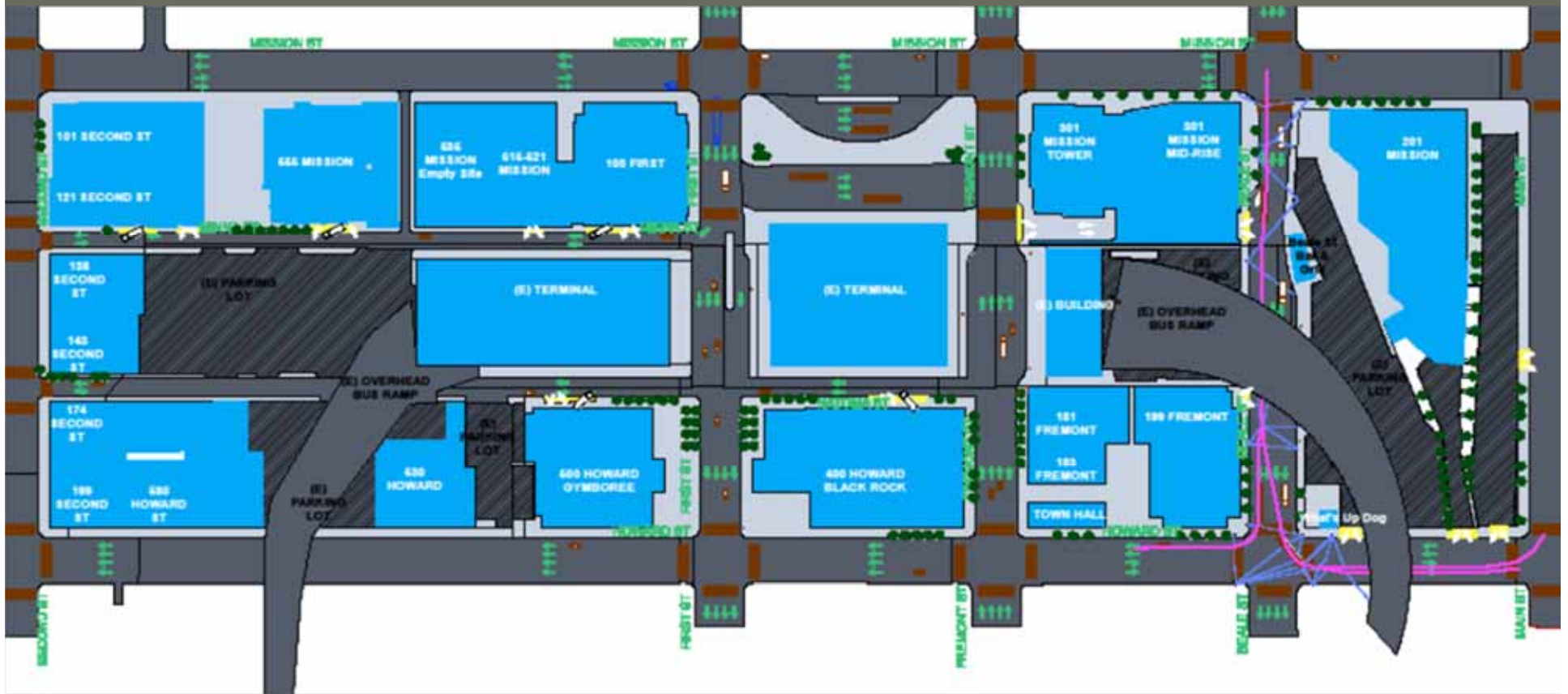
Traffic Bridge Elements





Transbay Transit Center

Traffic Bridges Existing Conditions





Transbay Transit Center

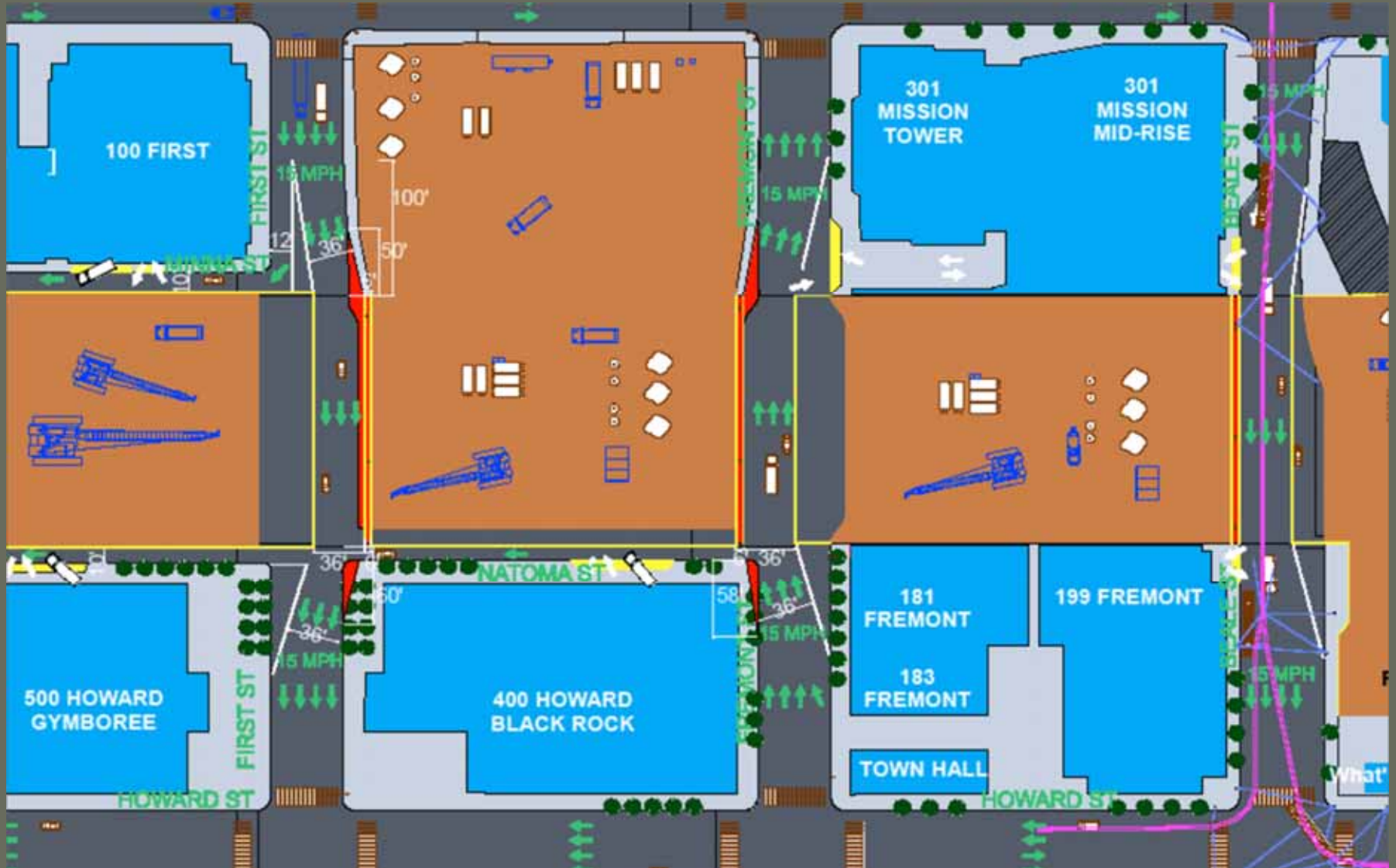
Traffic Bridges Existing Conditions





Transbay Transit Center

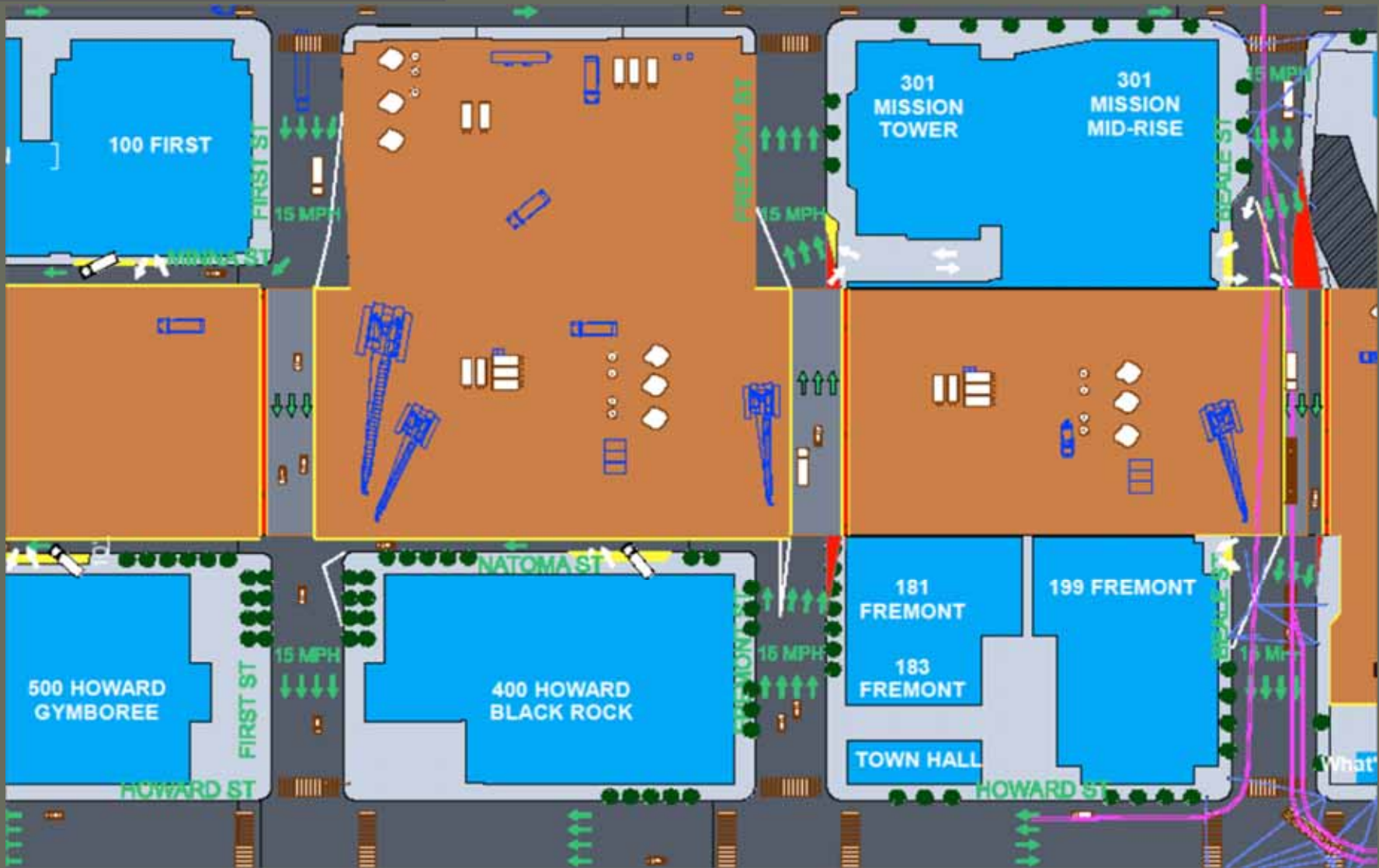
Consolidate Utilities & Install Shoring Wall





Transbay Transit Center

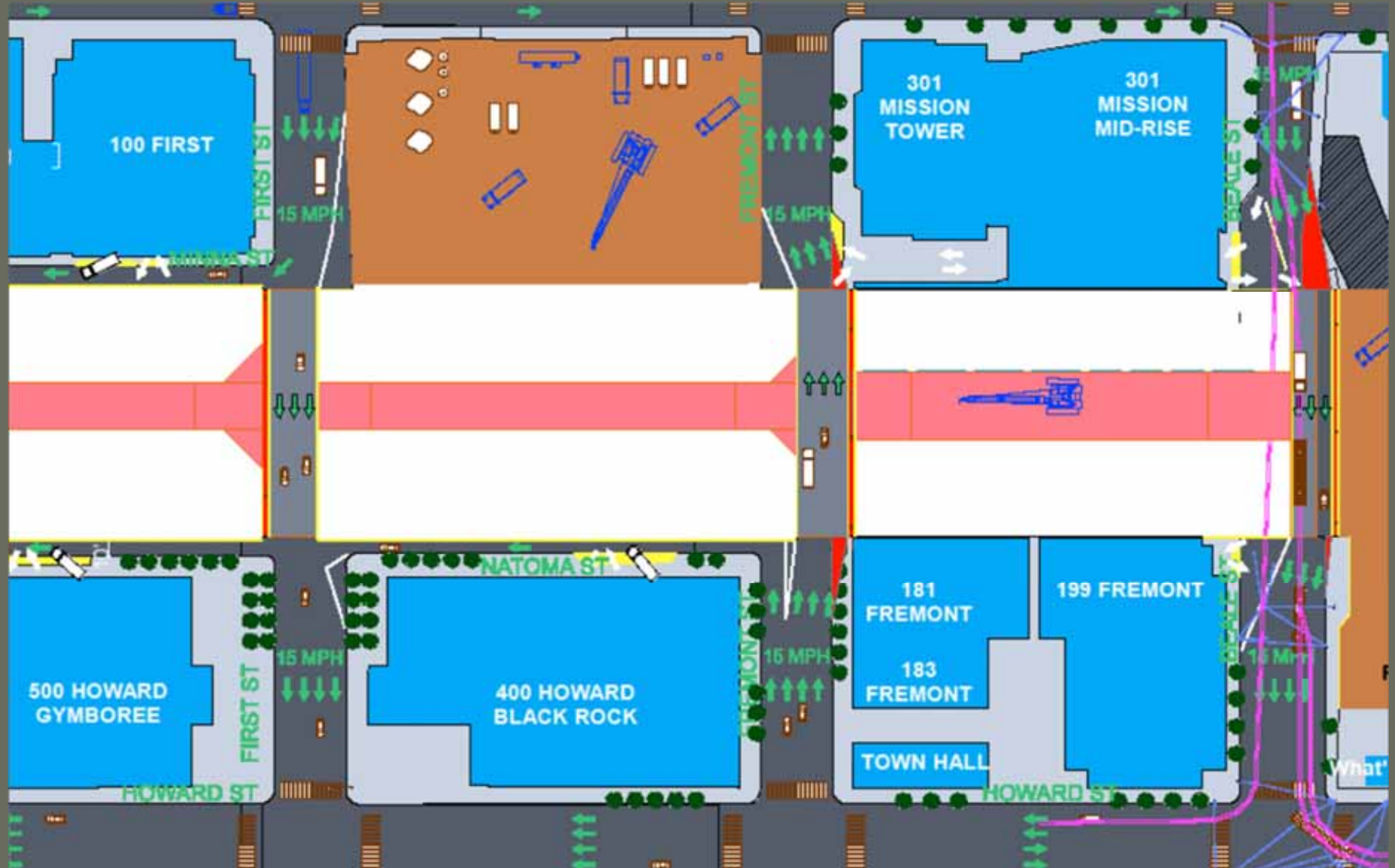
Traffic Bridge Install





Transbay Transit Center

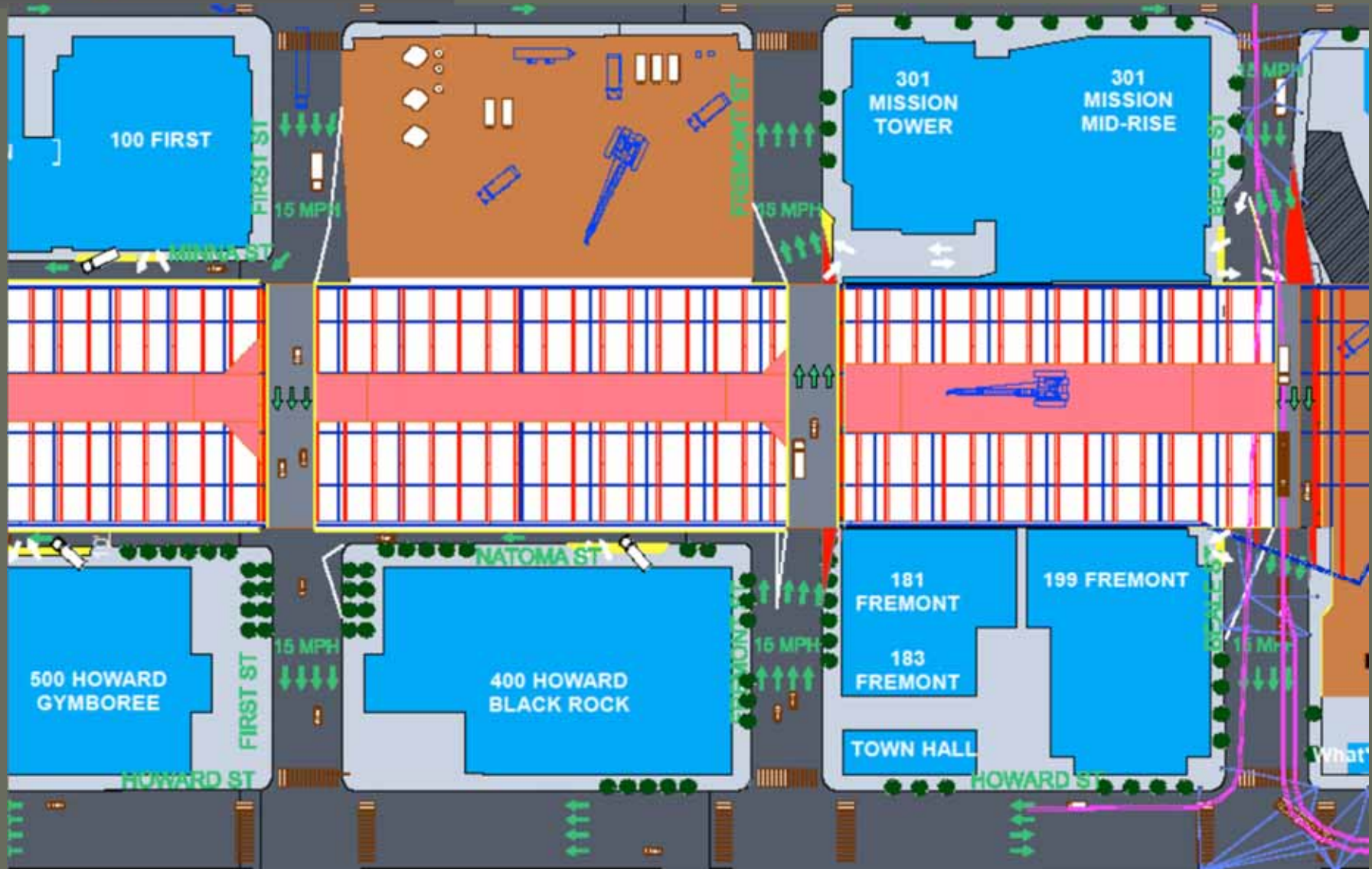
Install Trestle Deck



Excavate & Install Internal Bracing



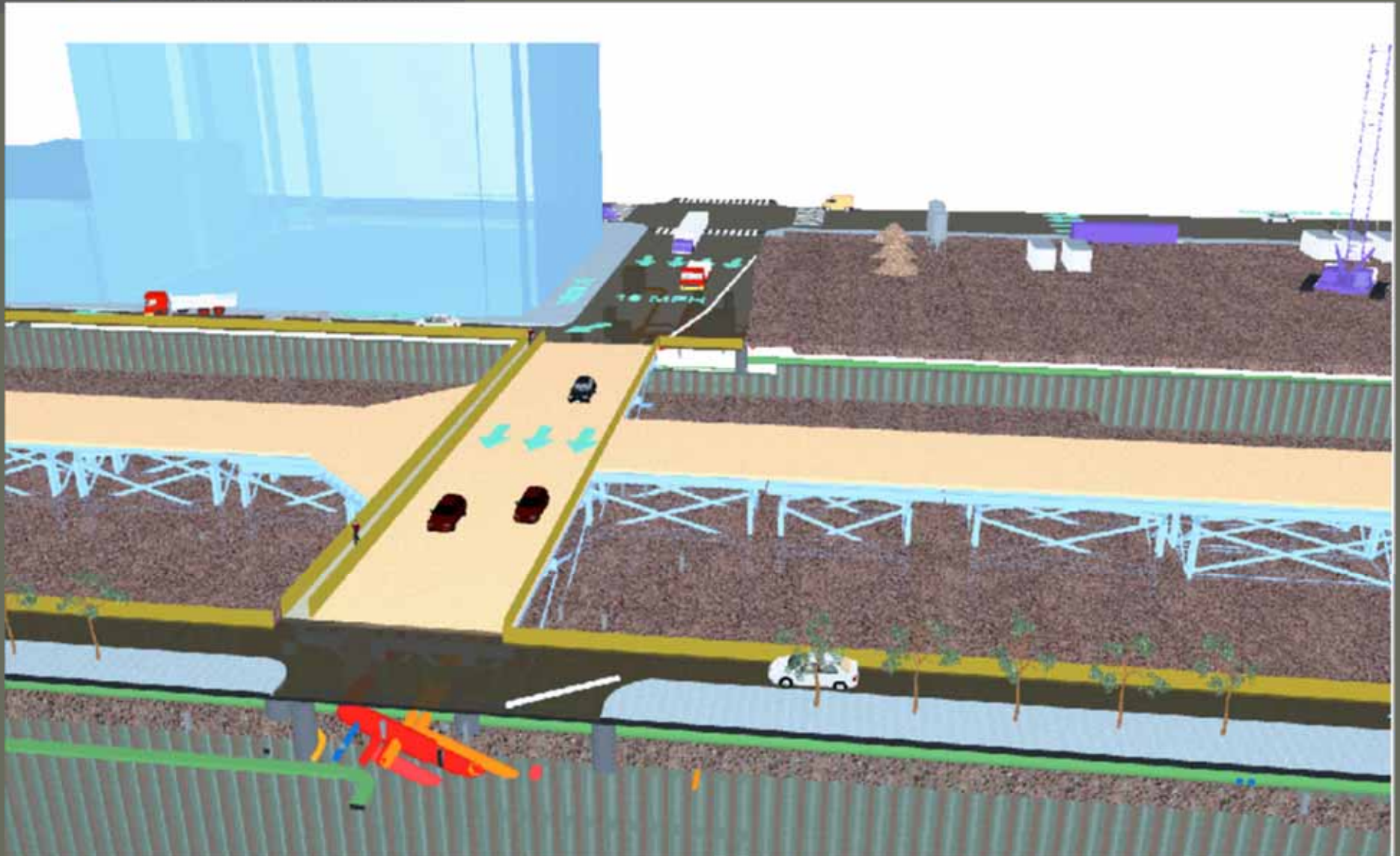
Transbay Transit Center





Transbay Transit Center

Traffic Bridge Over Excavation





Transbay Transit Center

Questions?