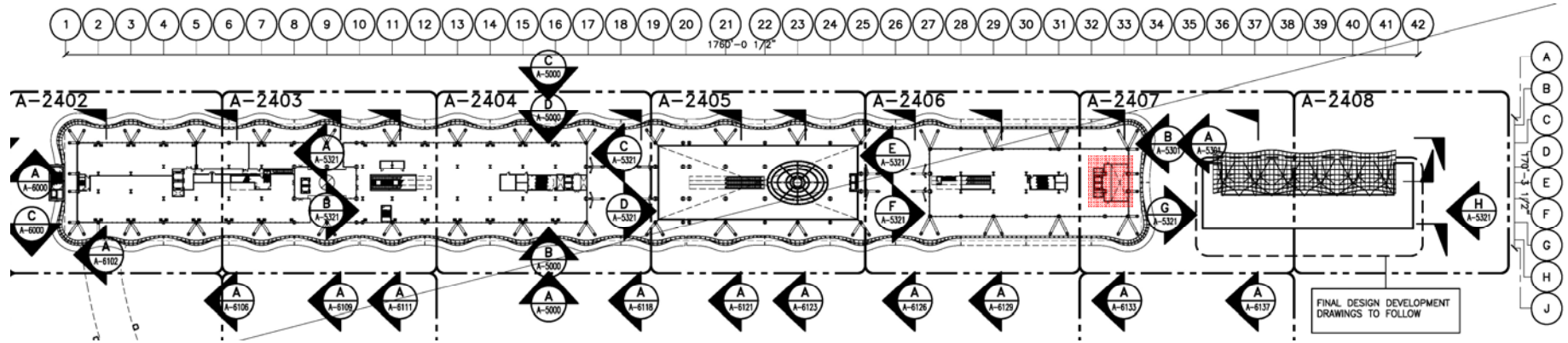




**Transbay Transit
Center Building
50% CD Overview**

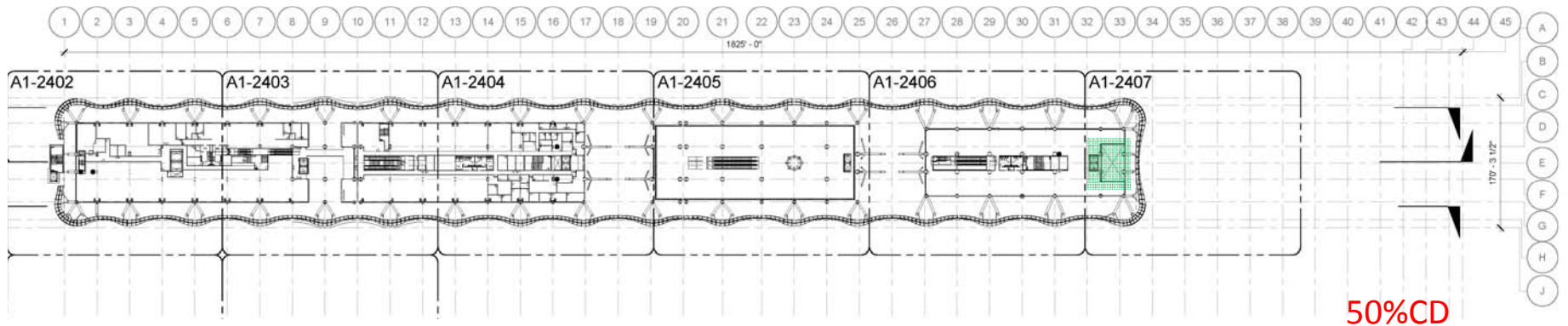
January 2011

SECOND LEVEL



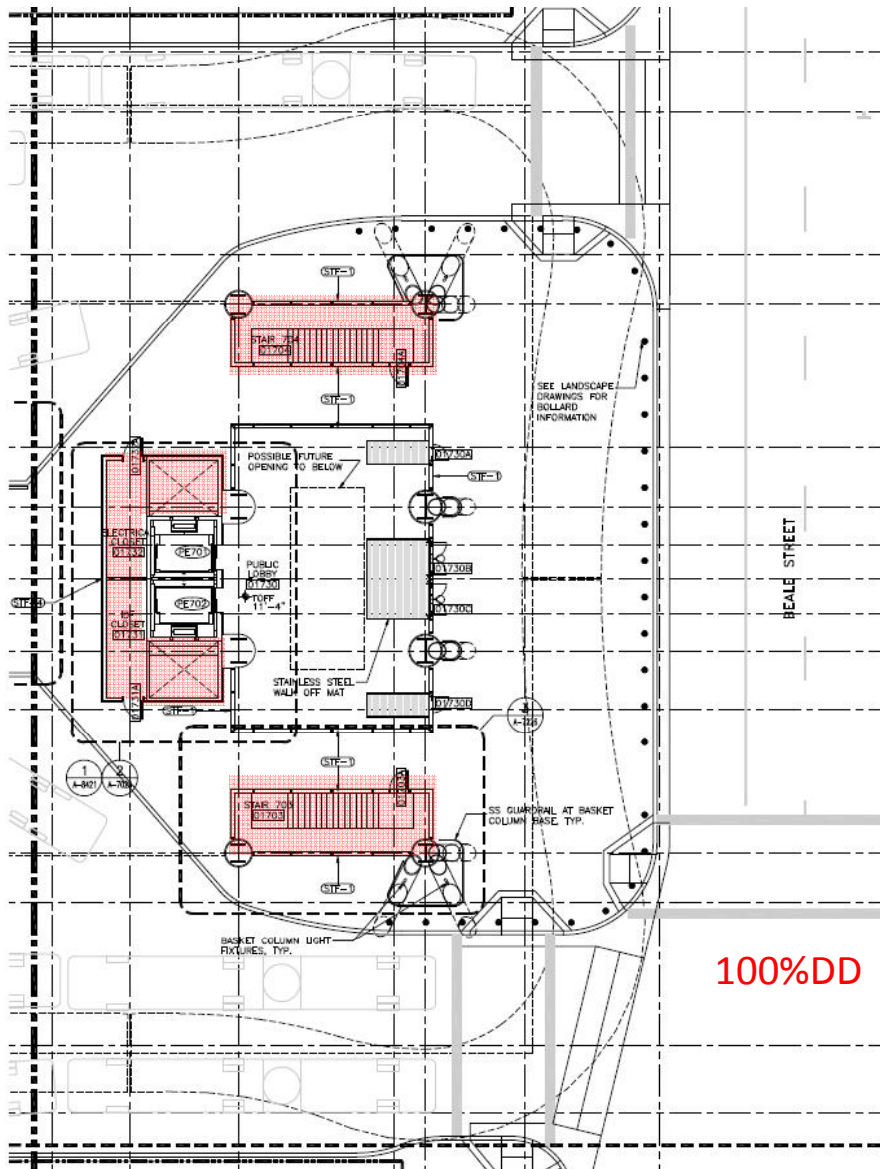
100%DD

- Balcony deleted at 2nd Level
- Passenger Elevators flipped from front entry to rear entry (at 2nd Level)
- Elevator entry on both front & rear at Ground Level

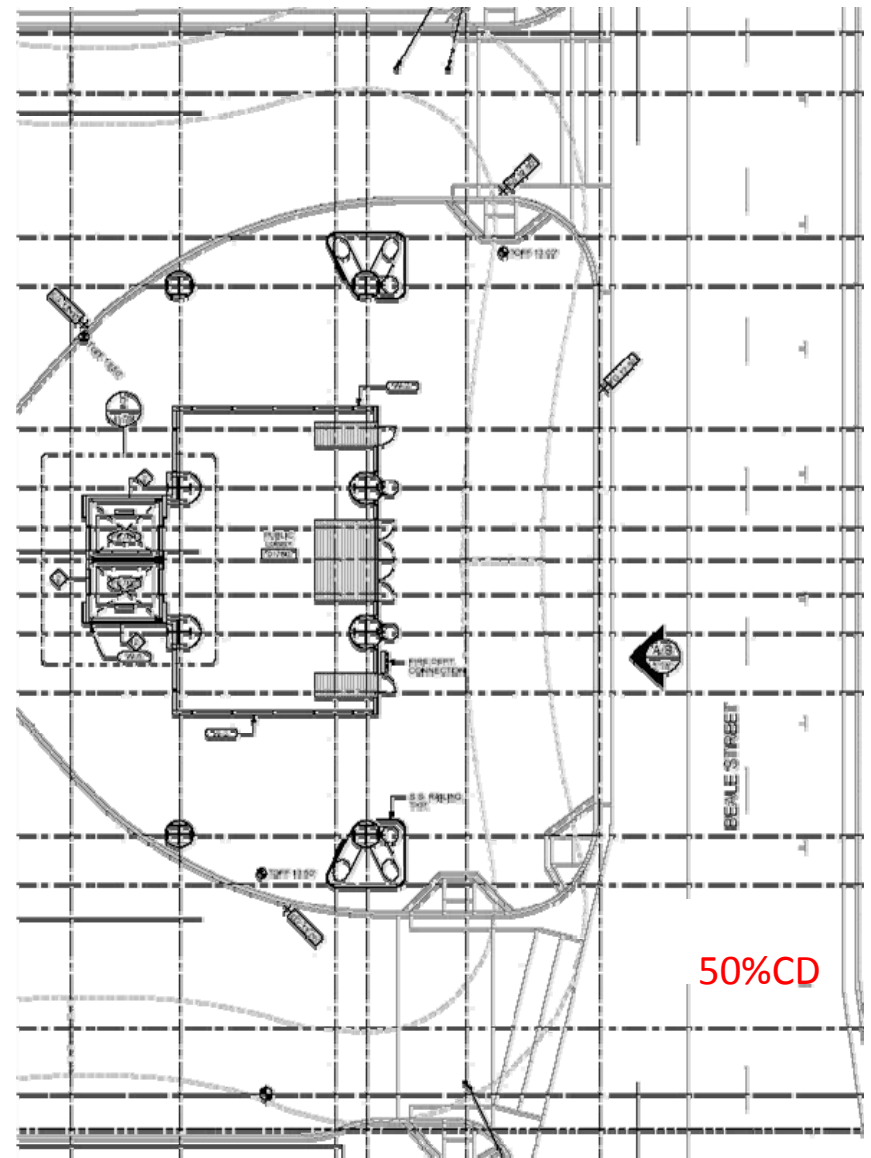


50%CD

GROUND LEVEL



100%DD



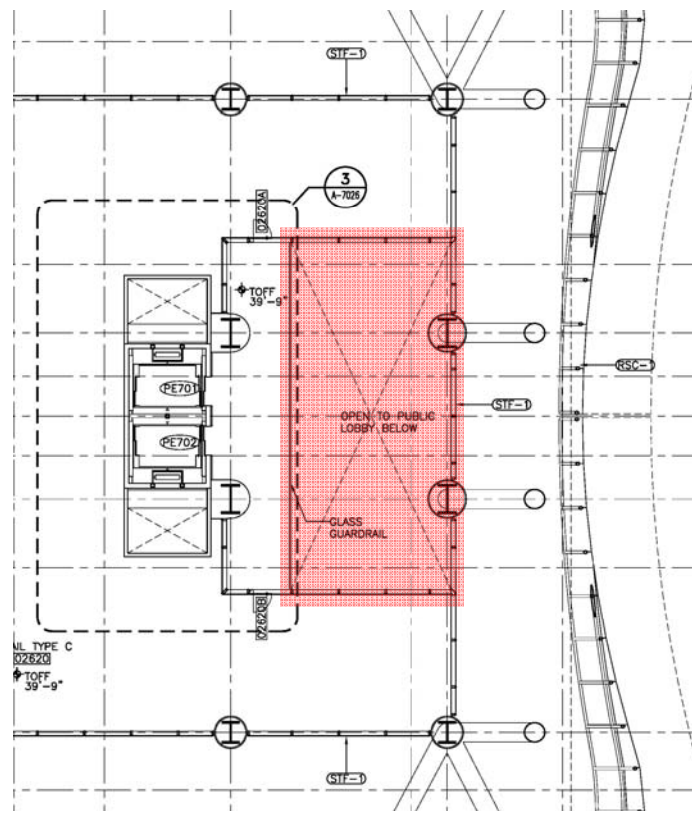
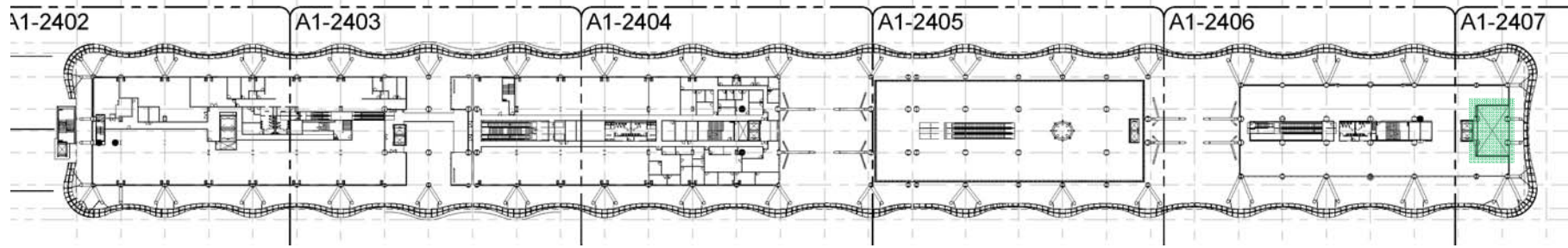
50%CD



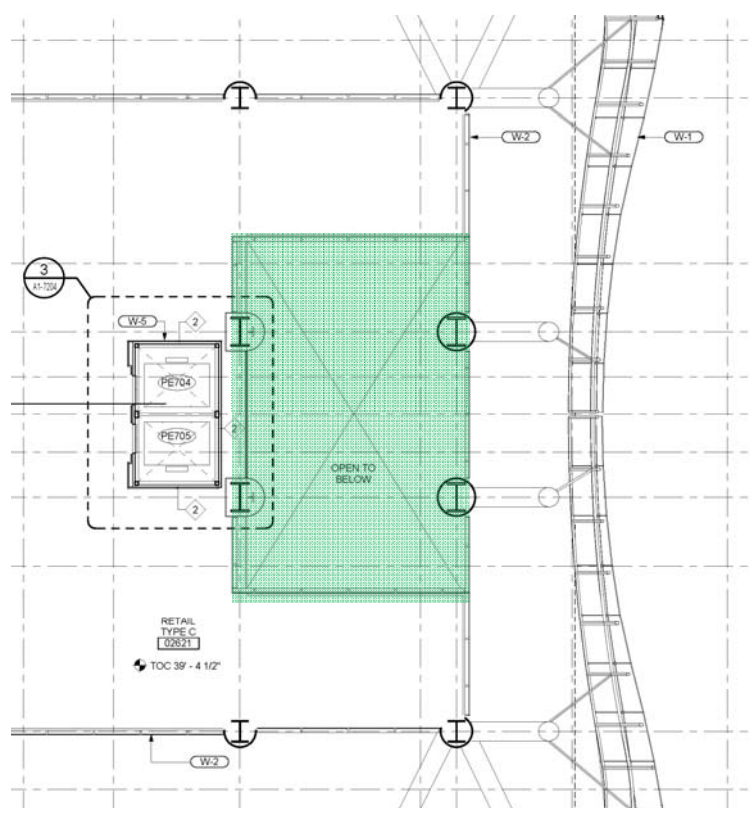
Muni Bus Plaza Eliminate Egress Stairs & Kitchen Exhaust Shafts

ASI # 0070
0073

SECOND LEVEL



100%DD



50%CD



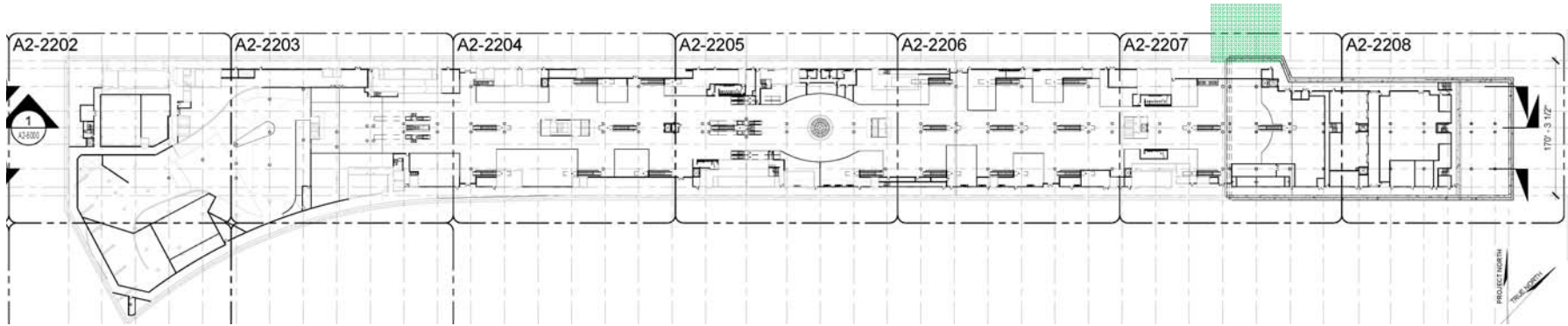
Beale Street Entrance (West Side)

Lobby increased in north & south dimension; glazing revised

ASI #

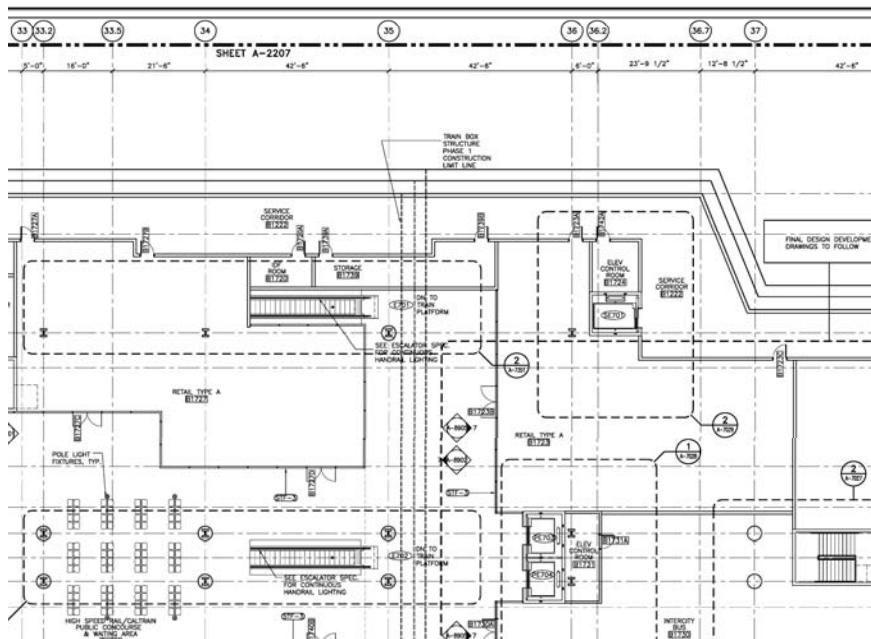
0077

LOWER CONCOURSE LEVEL

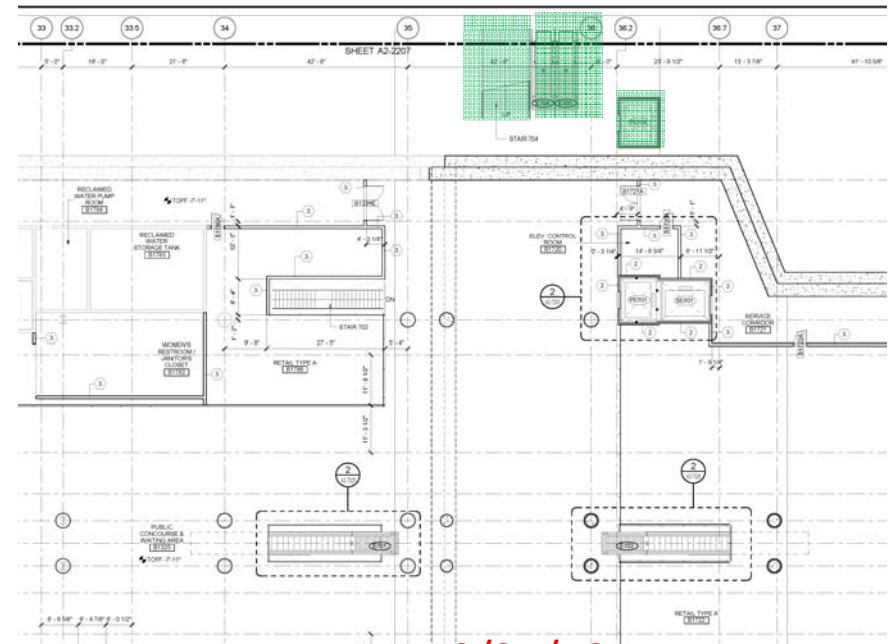


- Add Escalators connecting Lower Concourse to Ground Level
- Add Passenger Elevator connecting Lower Concourse to Ground Level
- Add Stair with Bike Channel connecting Lower Concourse to Ground Level

50%CD



100%DD



10/25/10 Progress Issue

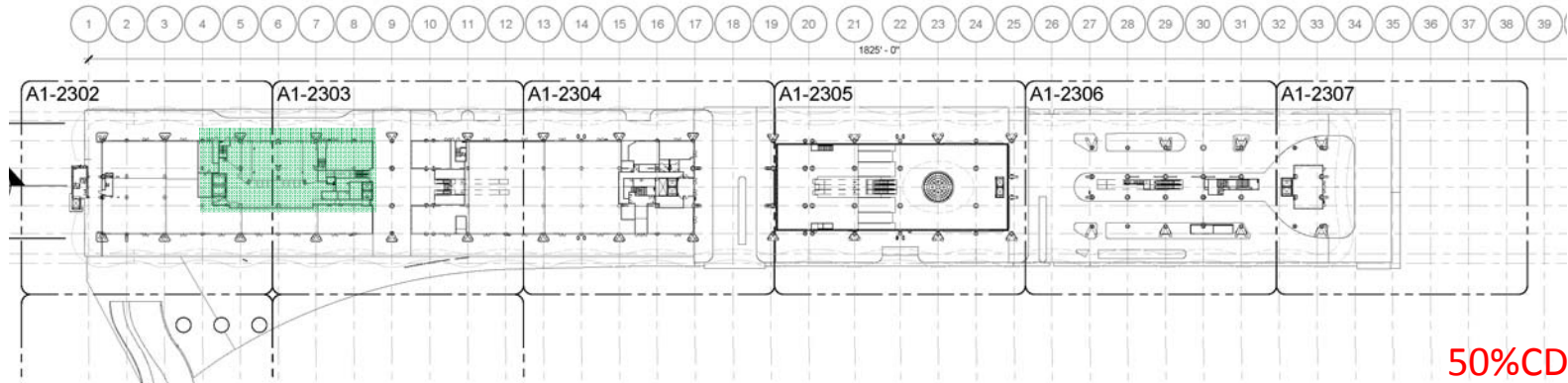


Beale Street Entrance (East Side)

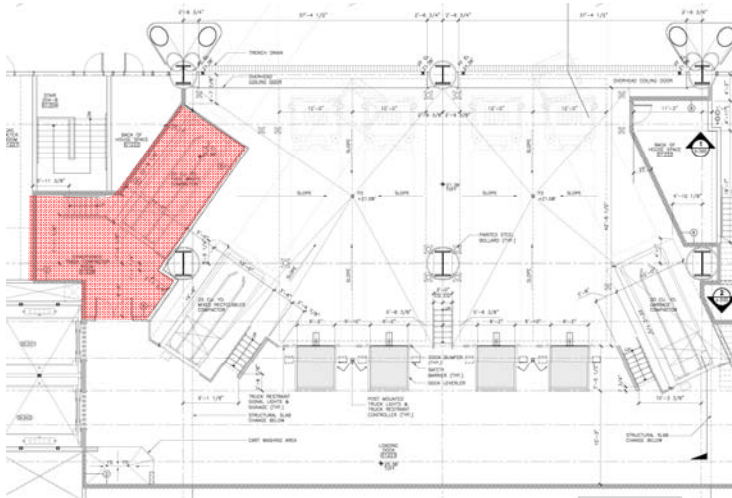
0090
0091
0092

ASI #

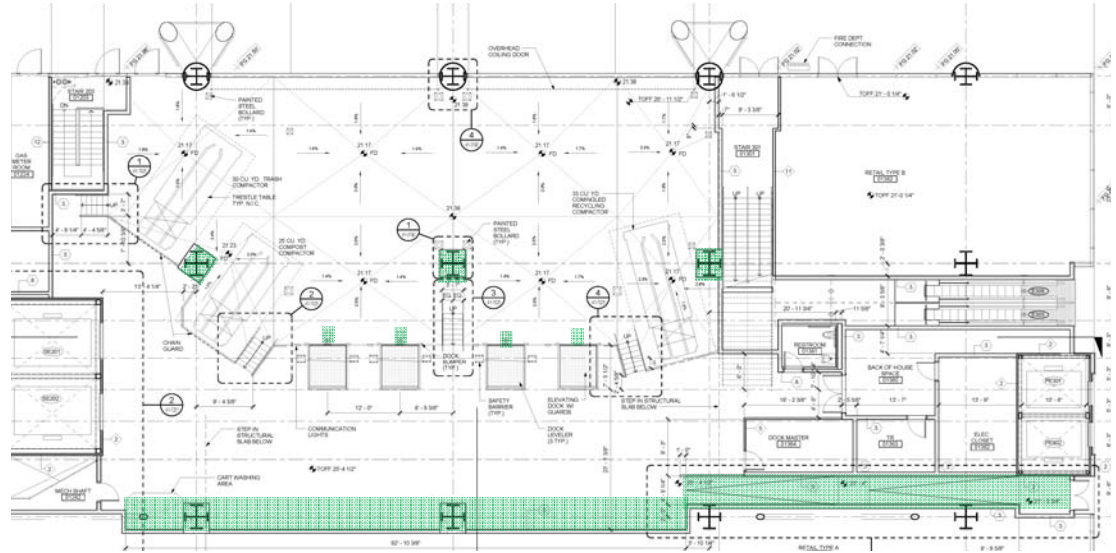
GROUND LEVEL



- Deleted refrigerated Trash Room
- Added truck restrain devices to the drawings only
- Added concrete encasement to steel columns
- Added Goods/ADA ramp
- Increased short tem storage area in the loading dock



100%DD



50%CD

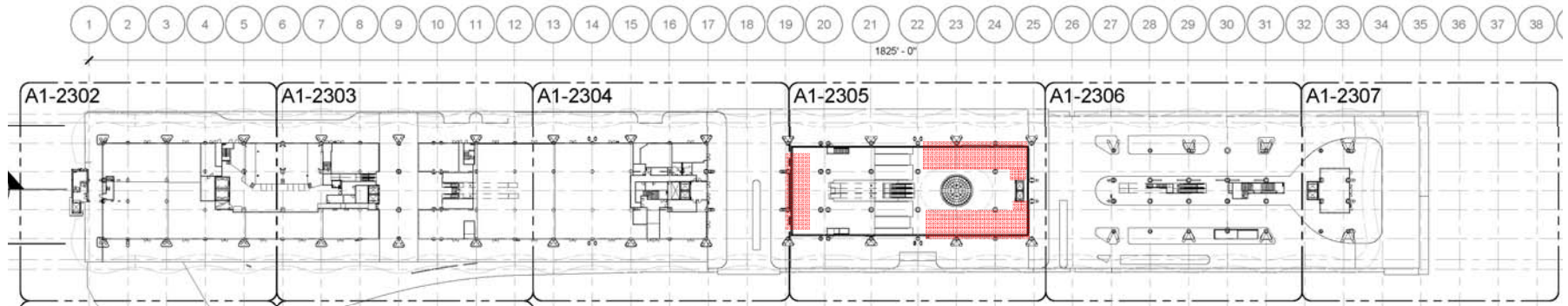
Loading Dock

0006, 0007

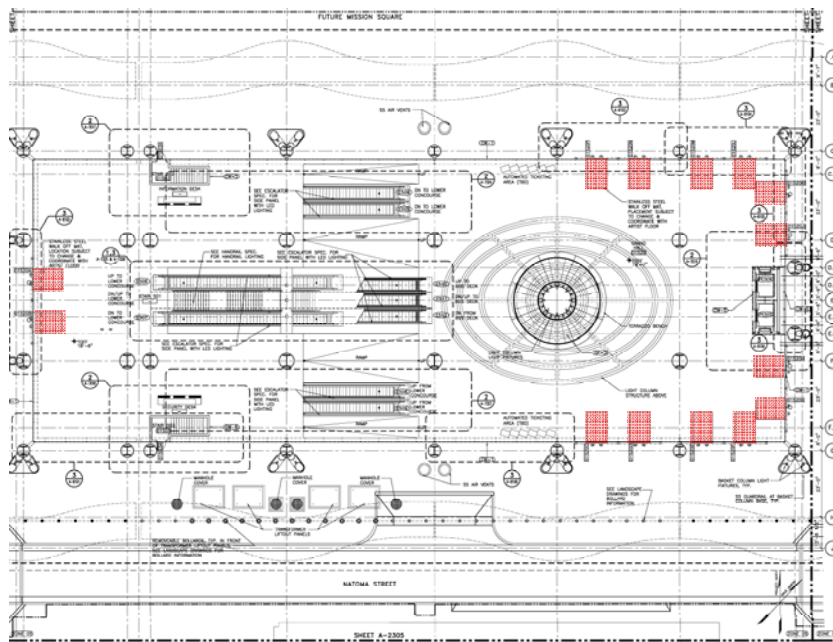
ASI # 0008, 0009

0010

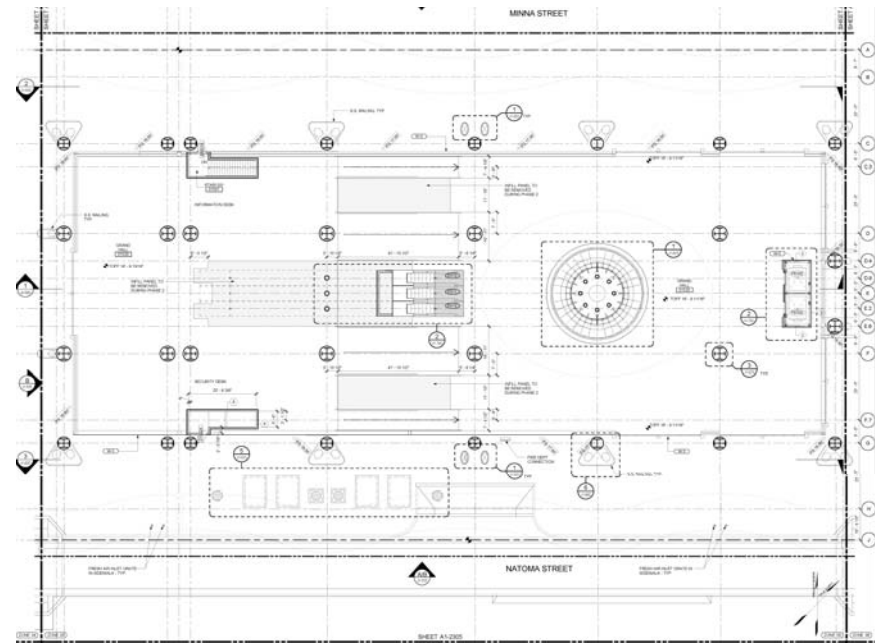
GROUND LEVEL



50%CD



100%DD



50%CD

Walk-off Mats

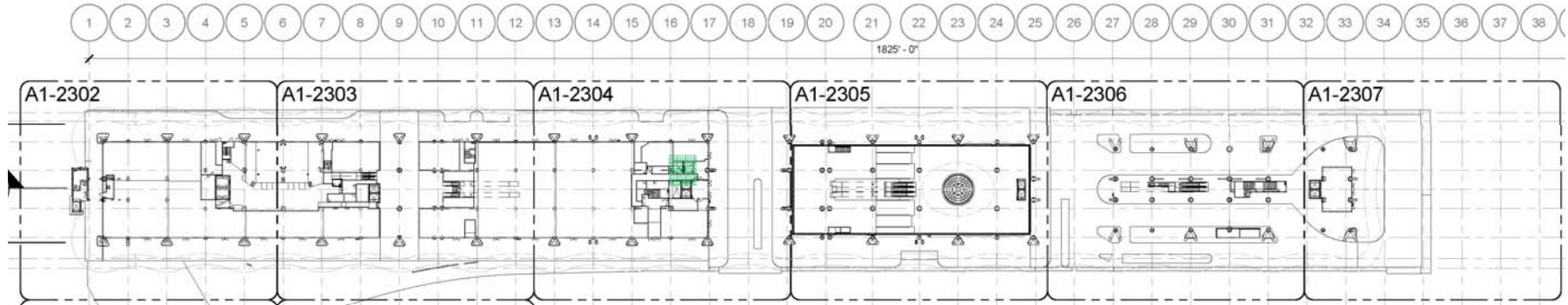
Deleted walk-off mats at Ground Level

ASI #

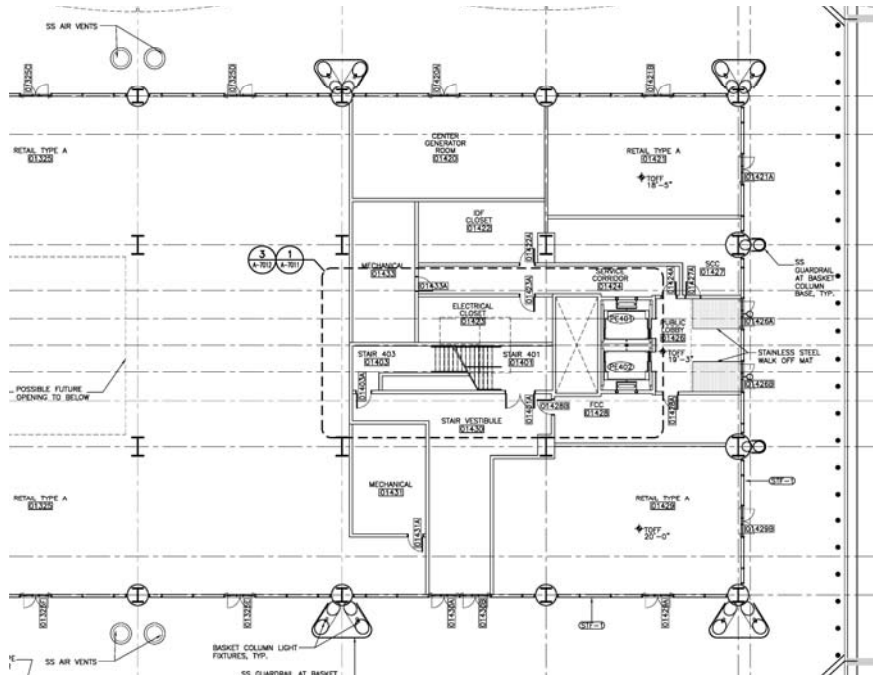
0020



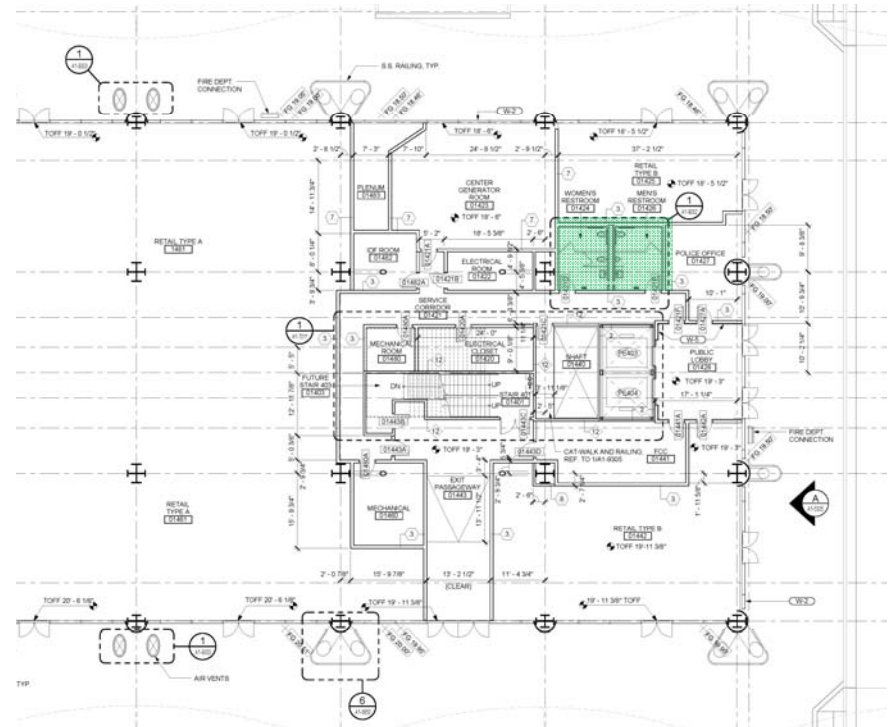
GROUND LEVEL



50%CD



100%DD



50%CD

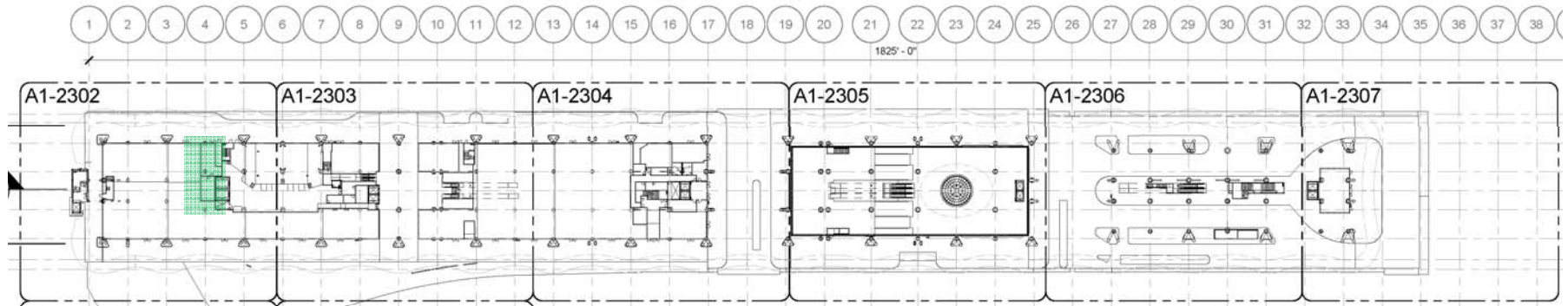


Employee Restrooms at Ground Level
 Added employee restrooms off First Street Lobby

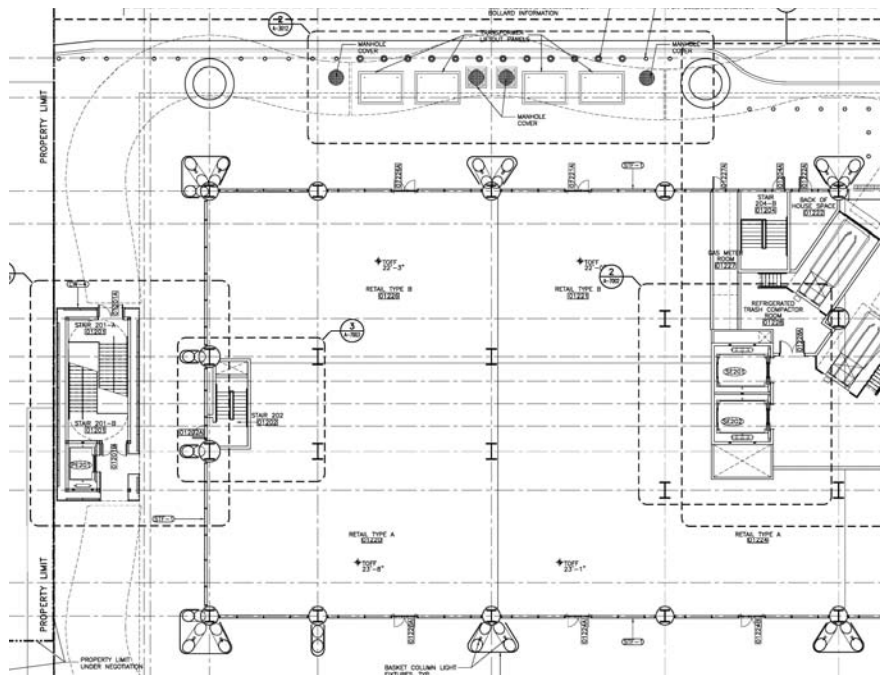
ASI #

0019

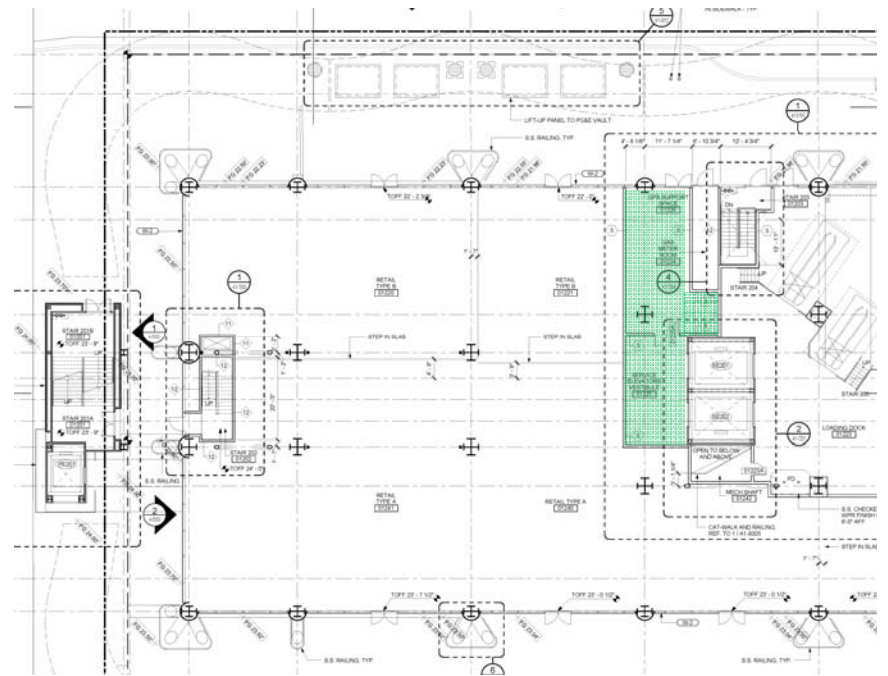
GROUND LEVEL



50%CD



100%DD



50%CD



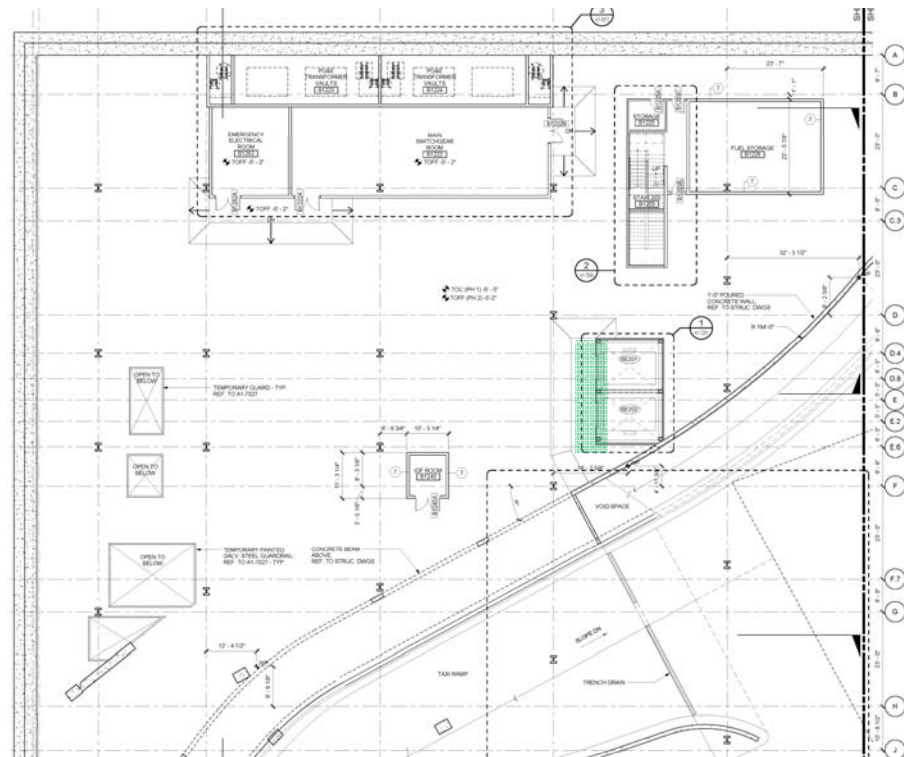
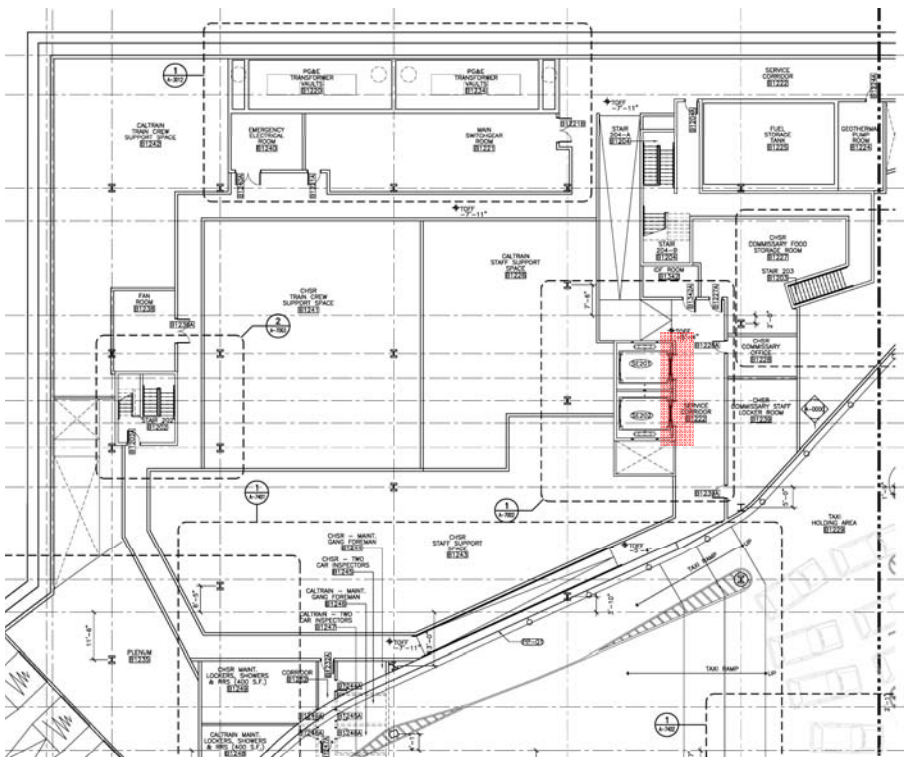
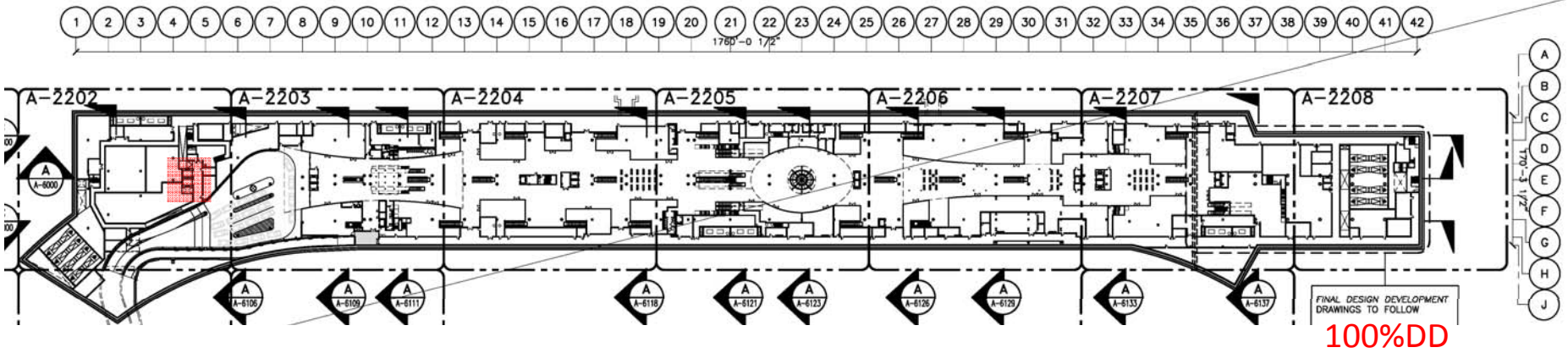
Service Elevators SE201/202

Added rear entry at Ground Level and Luggage Handling Room

ASI #

0023

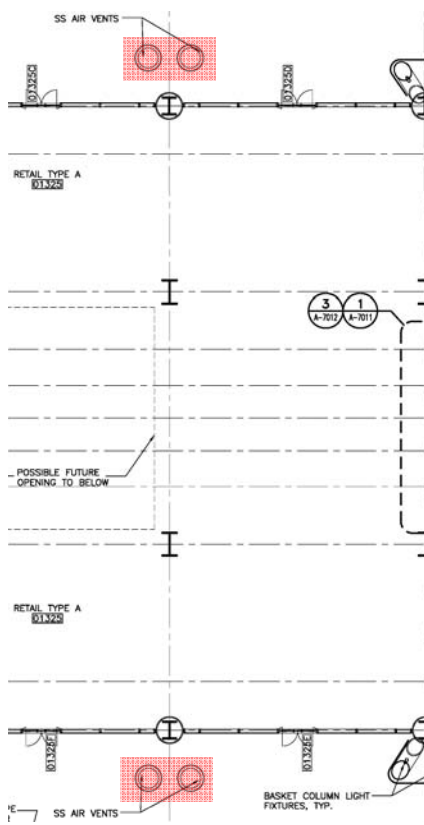
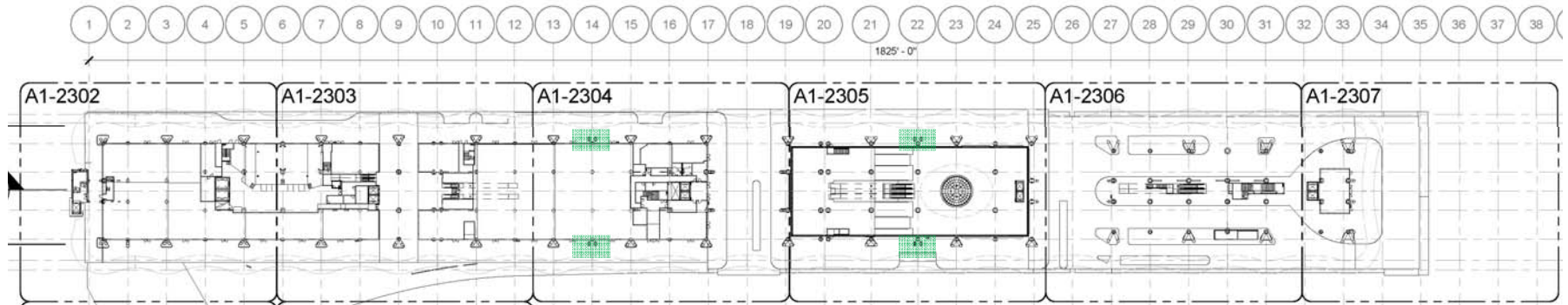
LOWER CONCOURSE LEVEL



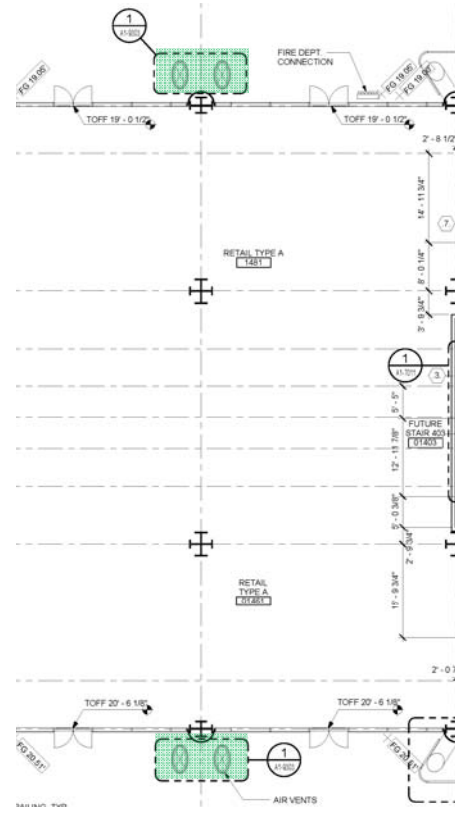
100%DD

50%CD

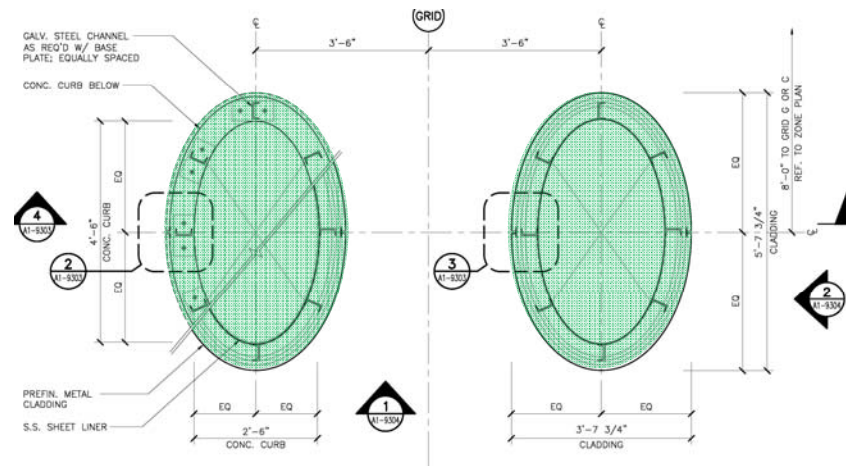
GROUND LEVEL



100%DD



50%CD



50%CD

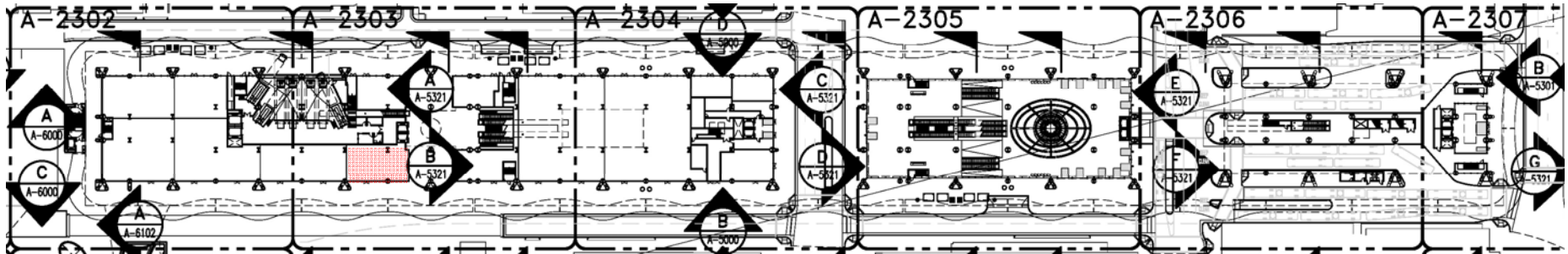
50%CD



Mechanical Intakes for Lower Concourse
 Revised exterior air intakes to elliptical shape from round

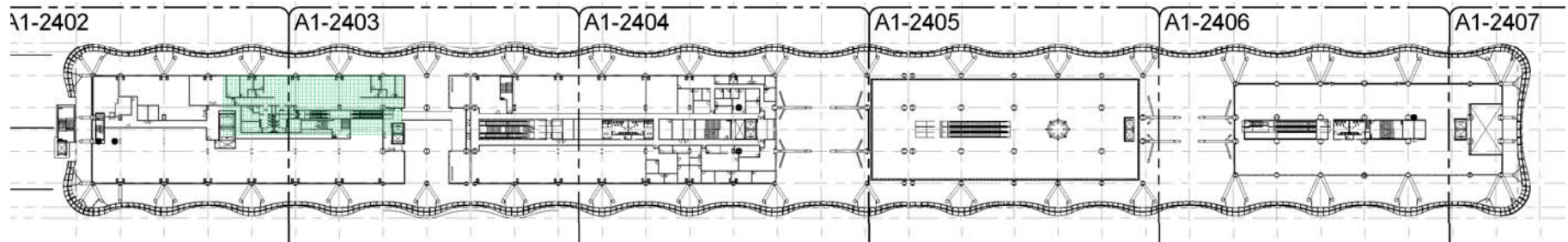
ASI # 0011

GROUND LEVEL



100%DD

SECOND LEVEL



50%CD



Transbay Transit Center

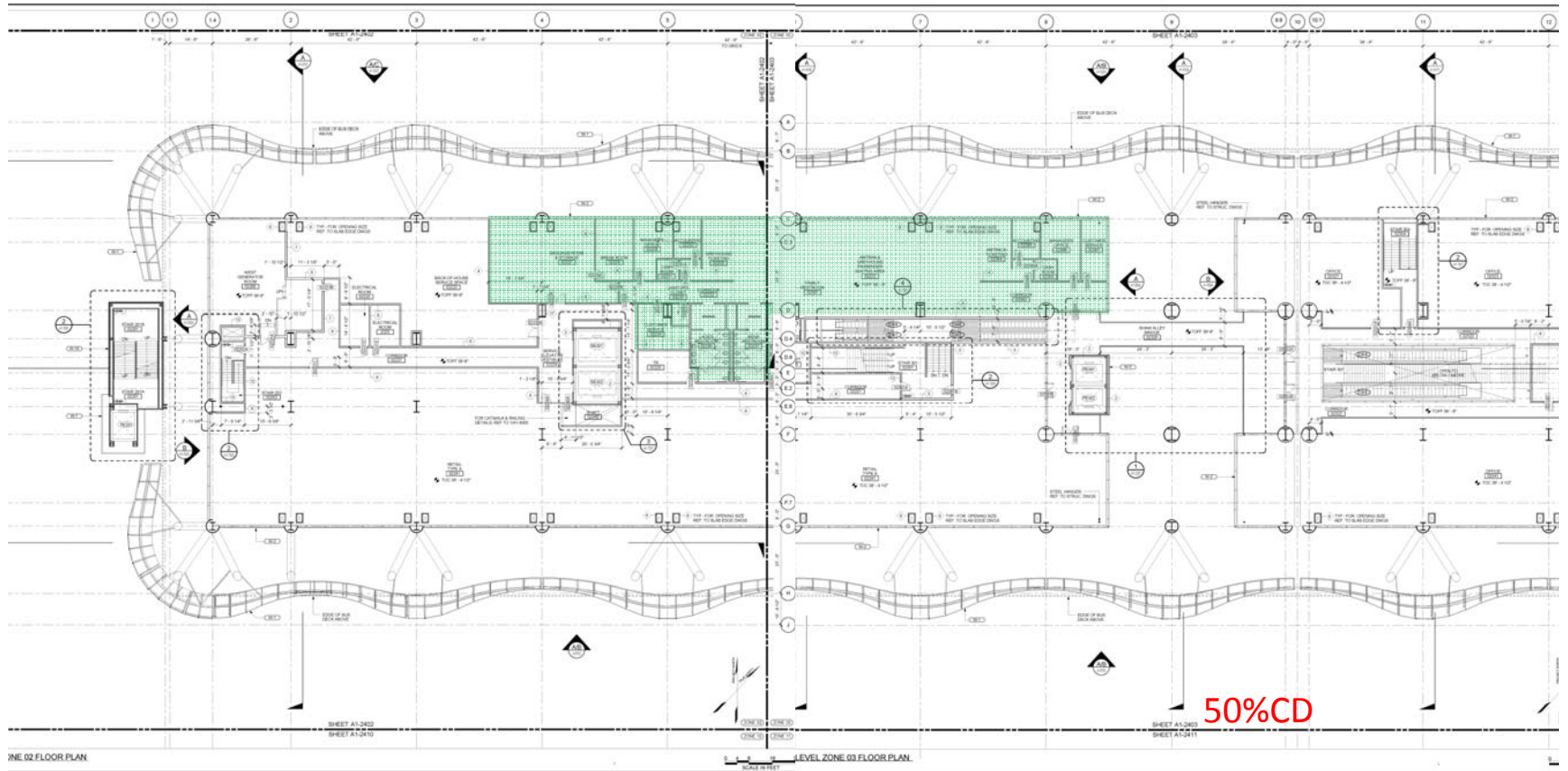
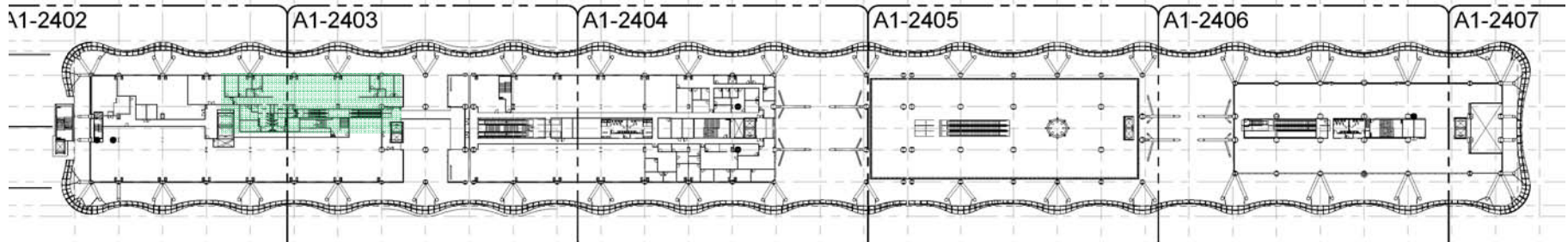
Amtrak/Greyhound Interim Facilities

Add temporary Amtrak/Greyhound program at Second Floor

ASI #

0052

SECOND LEVEL



ONE 02 FLOOR PLAN

San Francisco. These documents are the sole property of the City and the Copyrighted. Any reproduction, in whole or in part, without written consent of the Transbay Joint Powers Authority is prohibited.

Drawn: This sheet is not 50% CD. It has been revised from its original form. Issues listed on drawings/notes are no longer applicable.

LEVEL ZONE 03 FLOOR PLAN

50% CD and County of San Francisco. These documents are the sole property of the City and the Copyrighted. Any reproduction, in whole or in part, without written consent of the Transbay Joint Powers Authority is prohibited.

Drawn: This sheet is not 50% CD. It has been revised from its original form. Issues listed on drawings/notes are no longer applicable.

50%CD



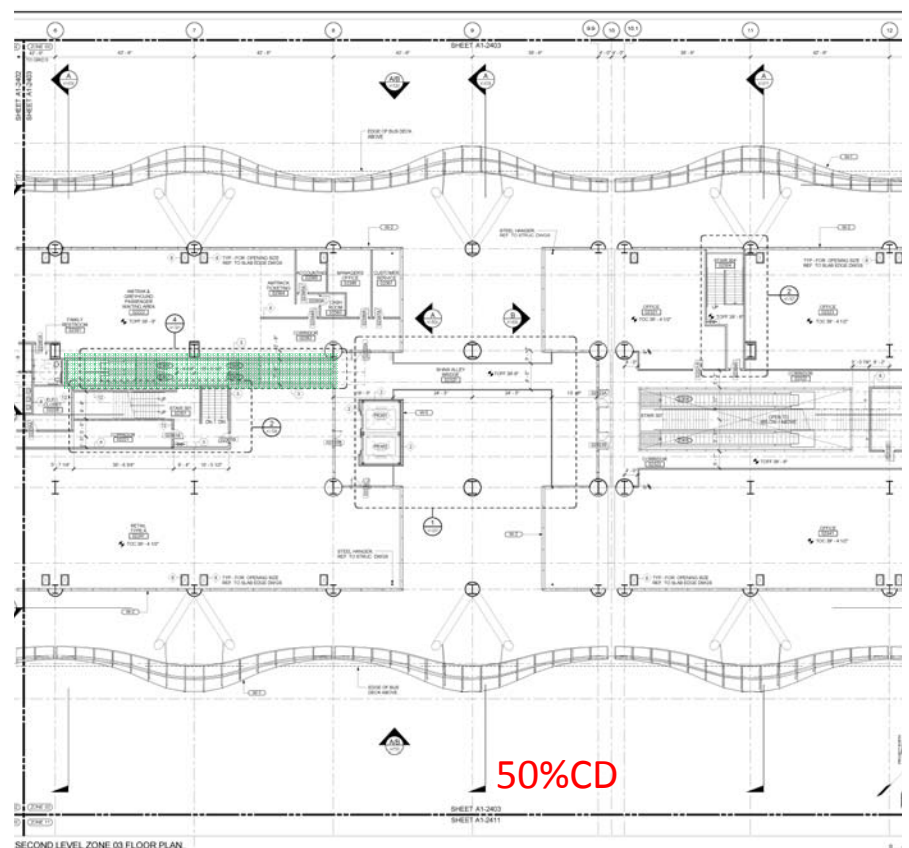
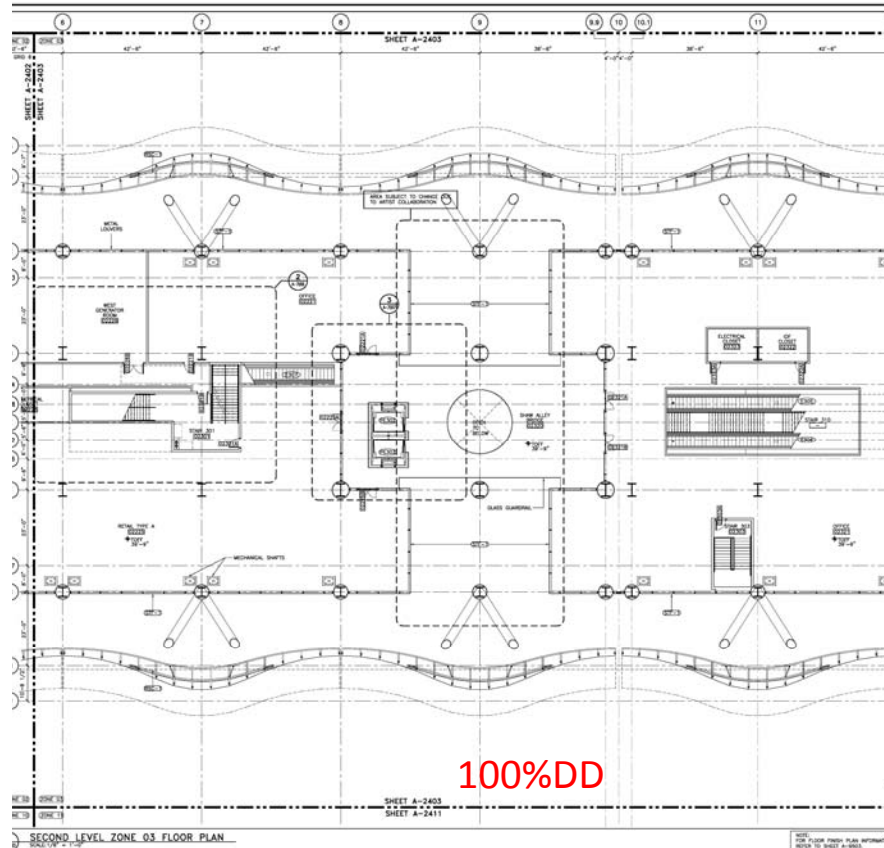
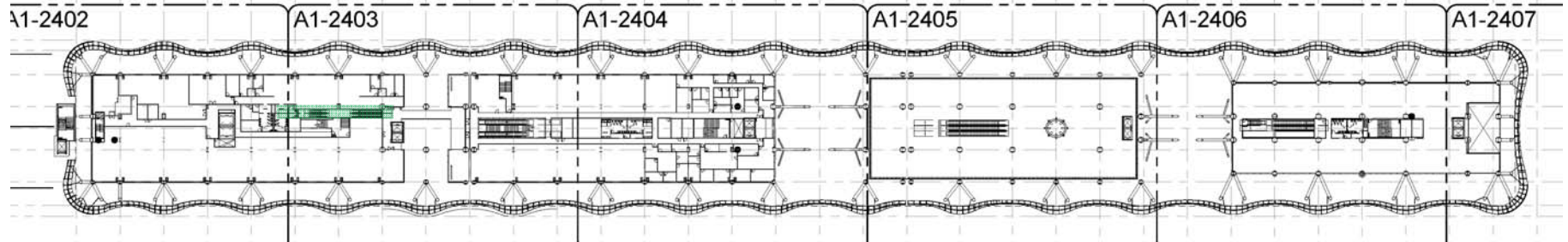
Amtrak/Greyhound Interim Facilities

Add temporary Amtrak/Greyhound program at Second Floor

ASI #

0052

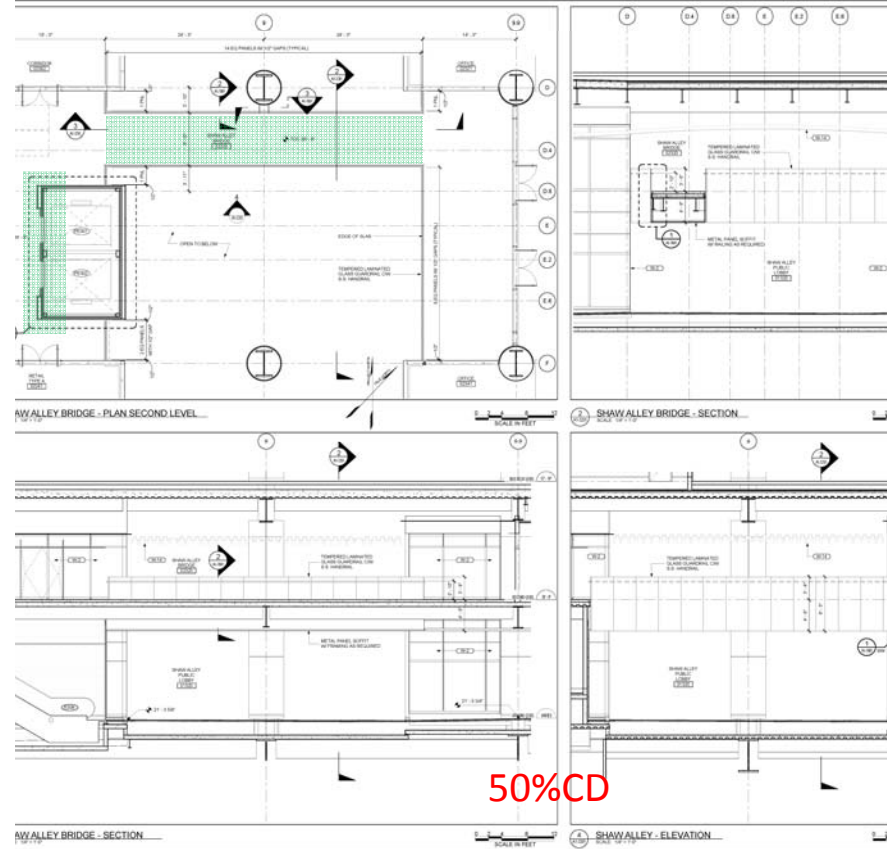
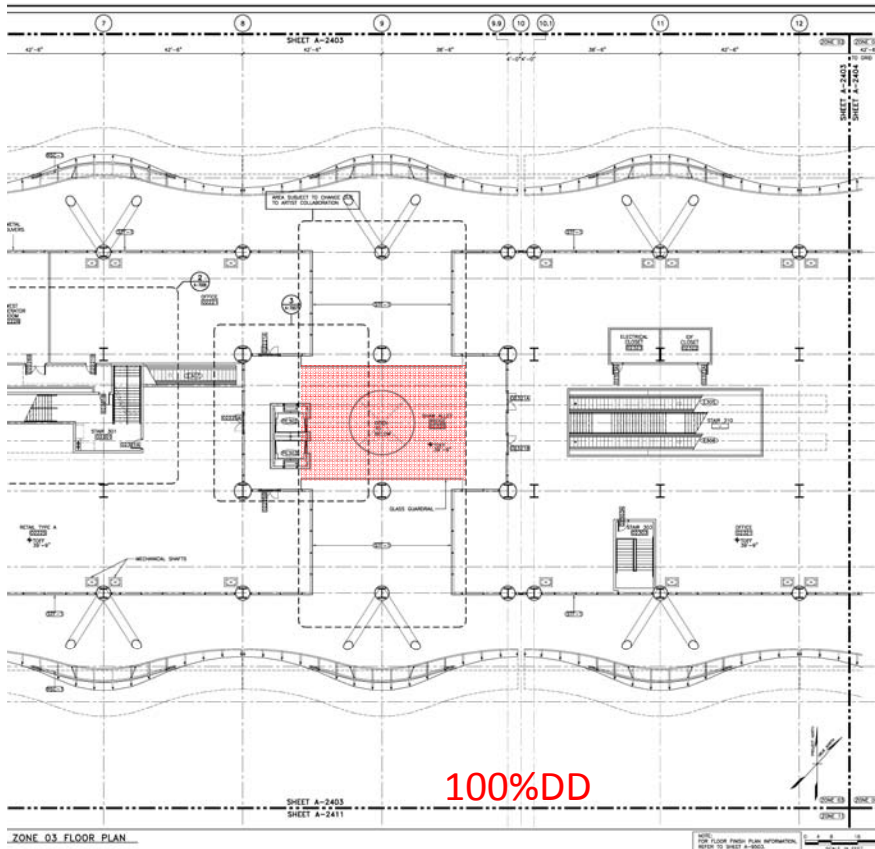
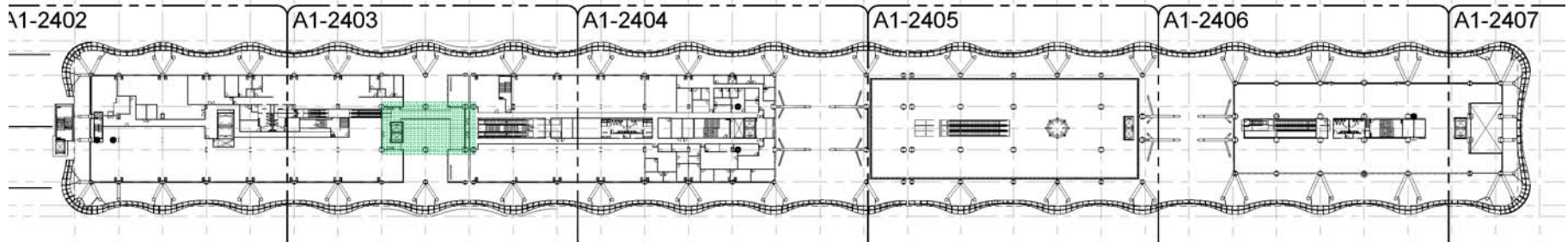
SECOND LEVEL



Amtrak/Greyhound Interim Facilities
 Add escalators and stop at Second Level for Intercity Bus

ASI # 0079

SECOND LEVEL



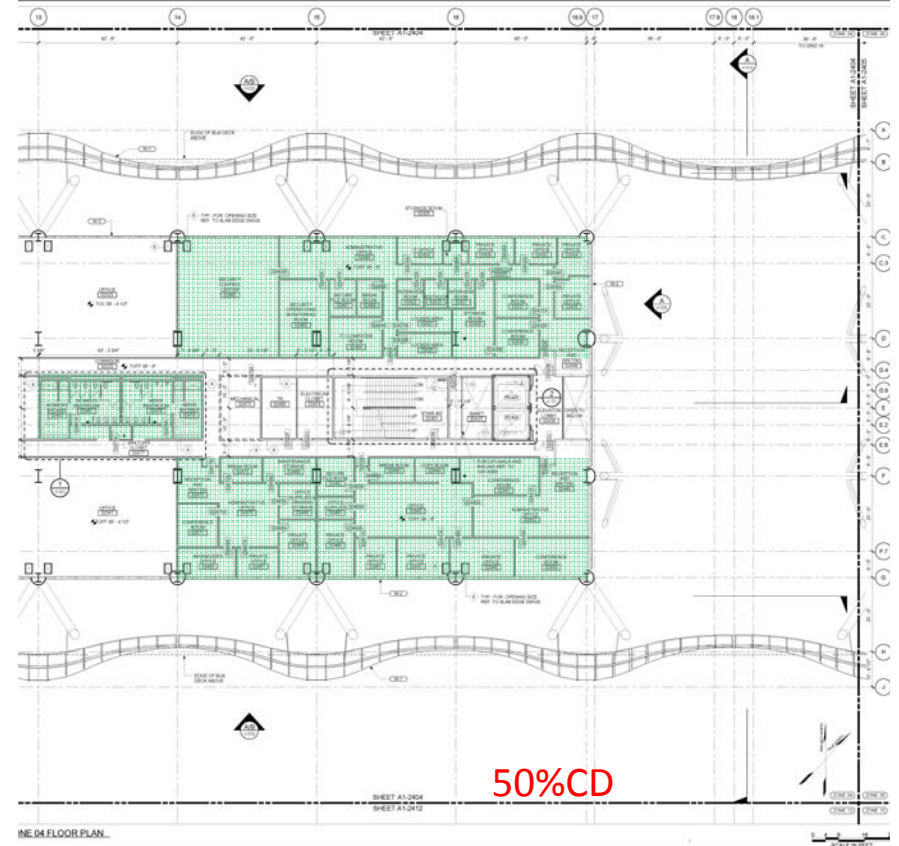
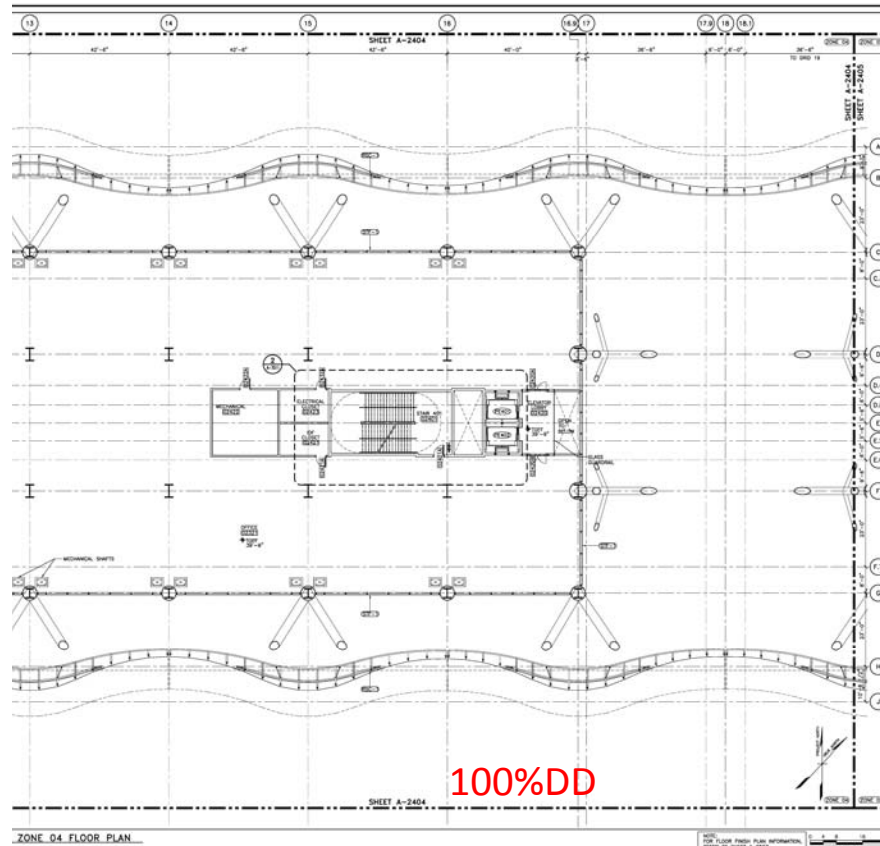
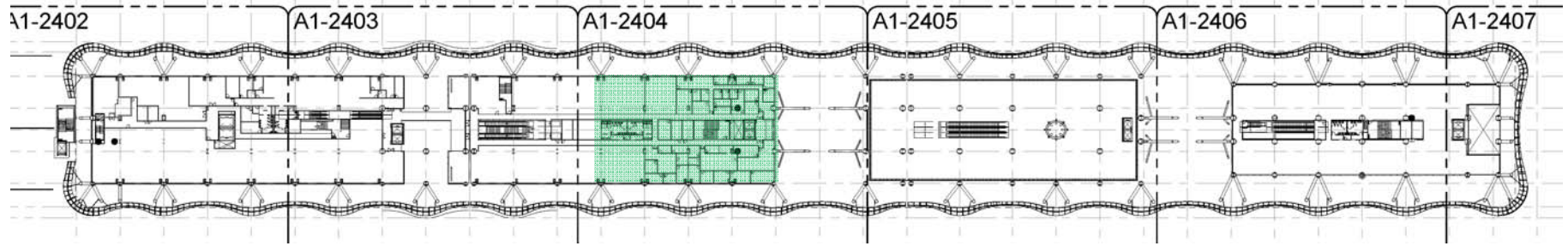
Shaw Alley Bridge

Reduced size of bridge & reversed elevator entry

ASI # 0012
0013



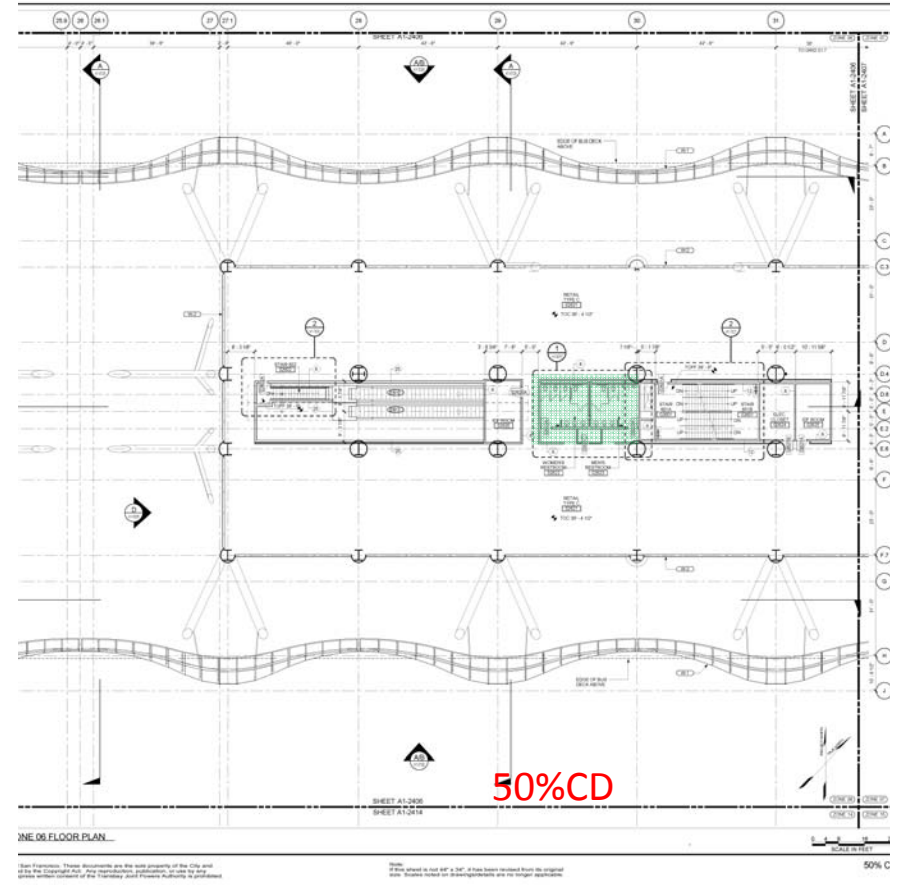
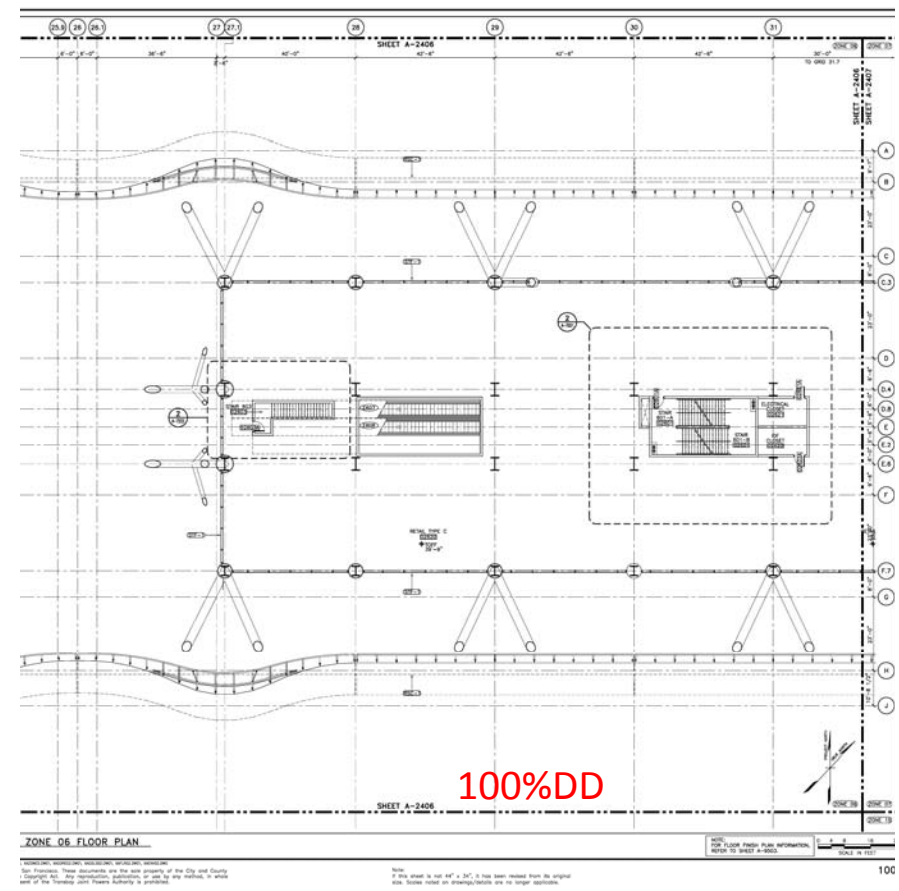
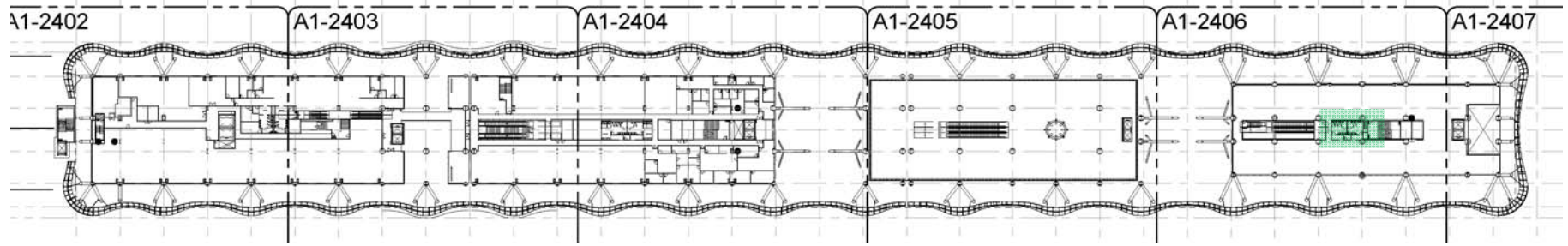
SECOND LEVEL



Employee restrooms & showers
 Employee restrooms and showers added on Second Level

ASI # 0086
 0087

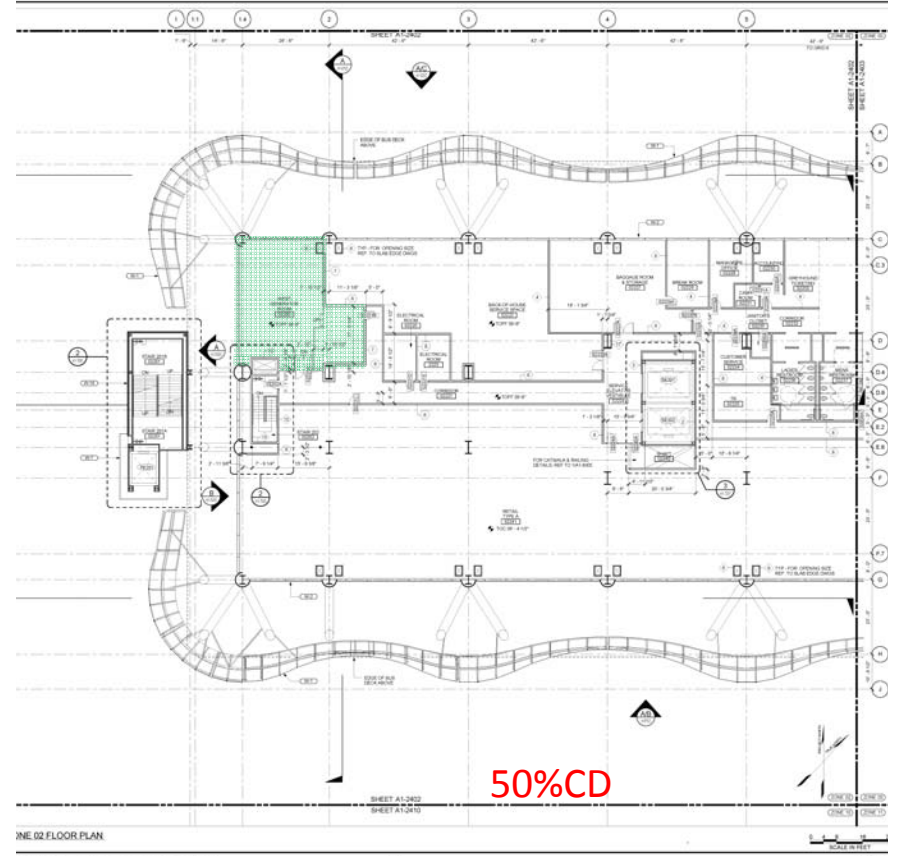
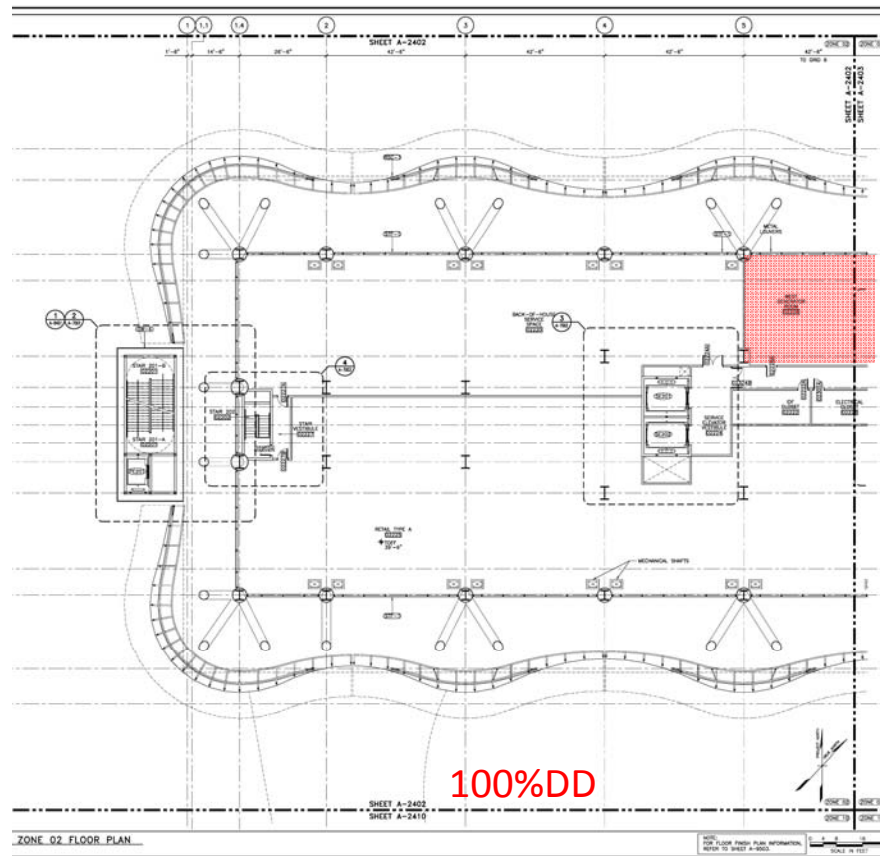
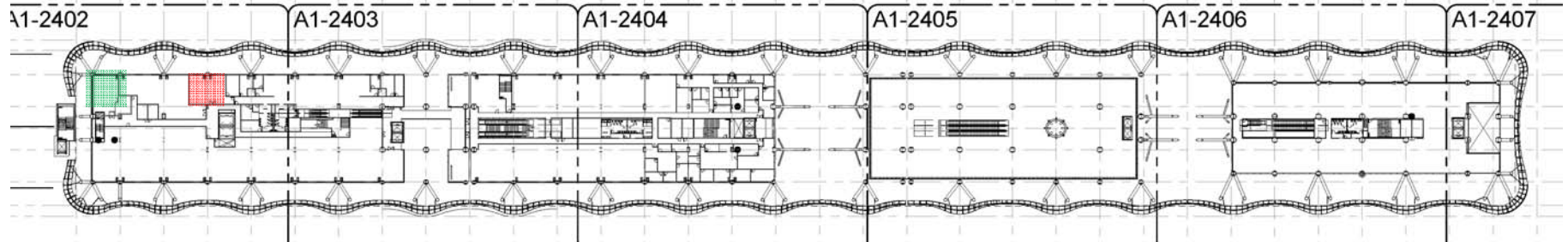
SECOND LEVEL



Tenant Restrooms
 Tenant restrooms added on Second Level, Sector D

ASI # 0021

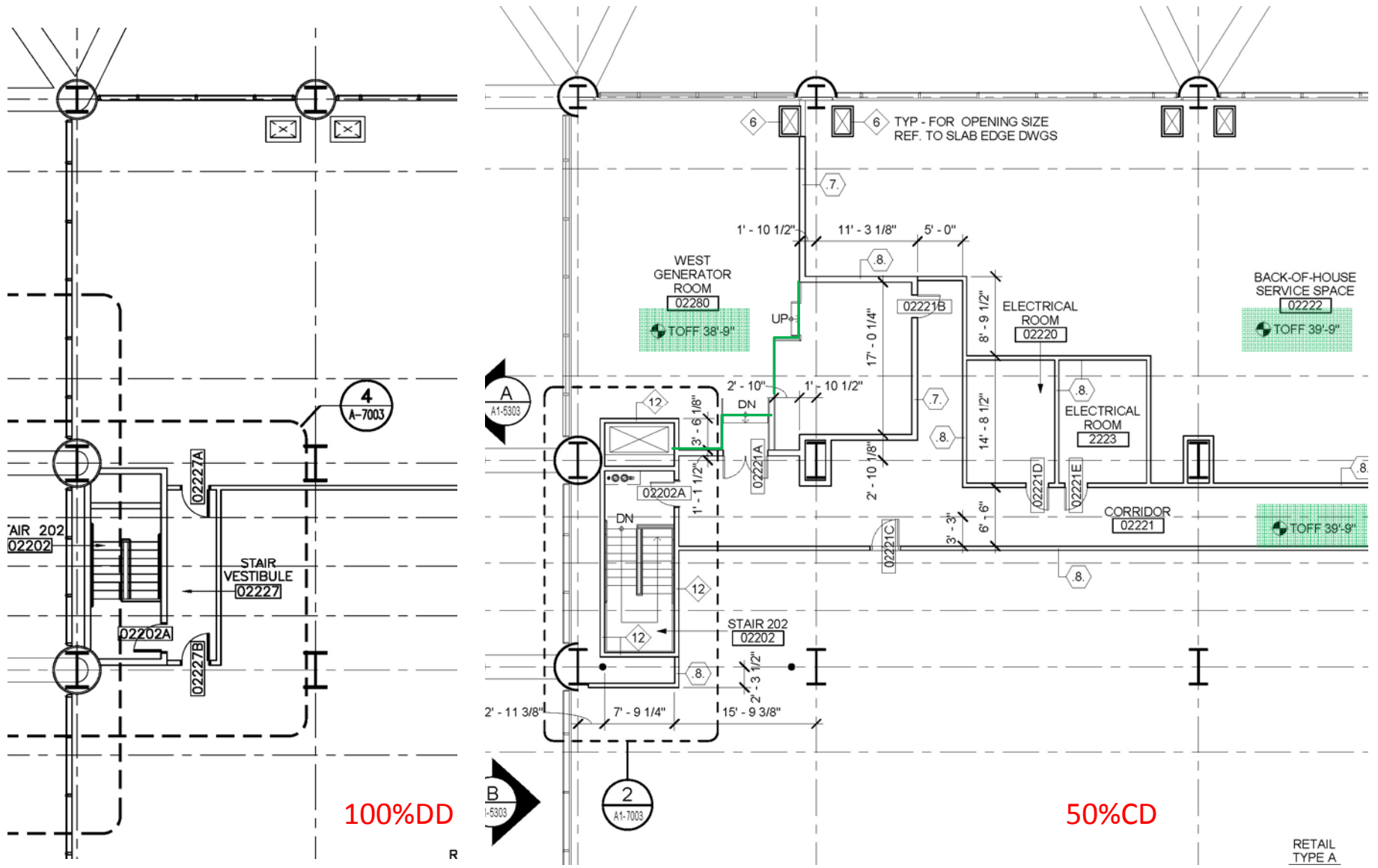
SECOND LEVEL



West Emergency Generator
 Relocated Generator to NW corner of Second Level

ASI # 0017

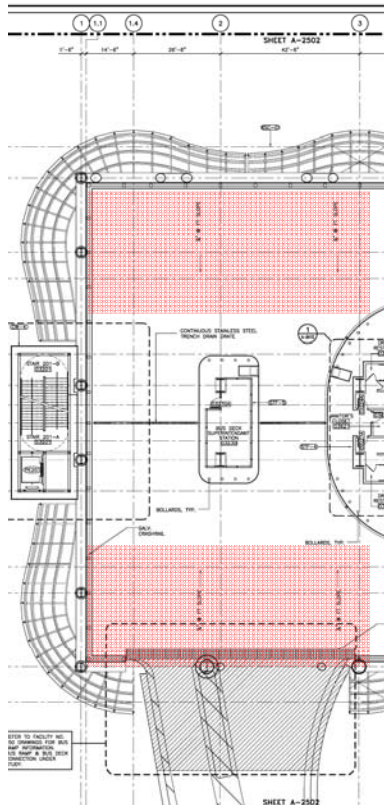
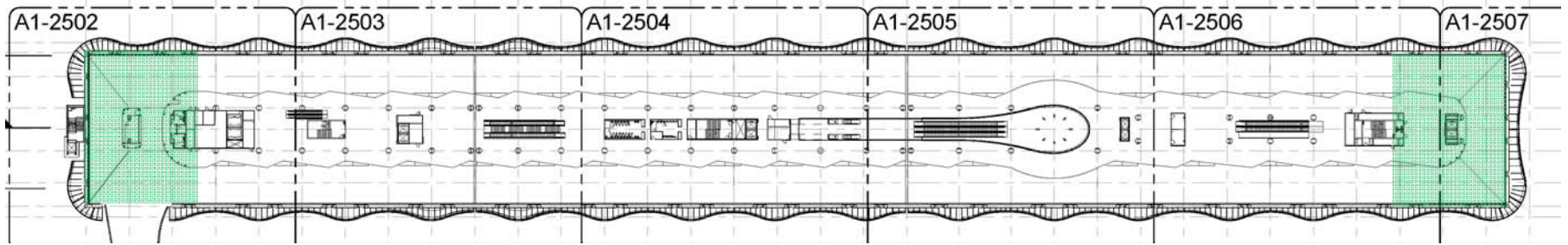
SECOND LEVEL



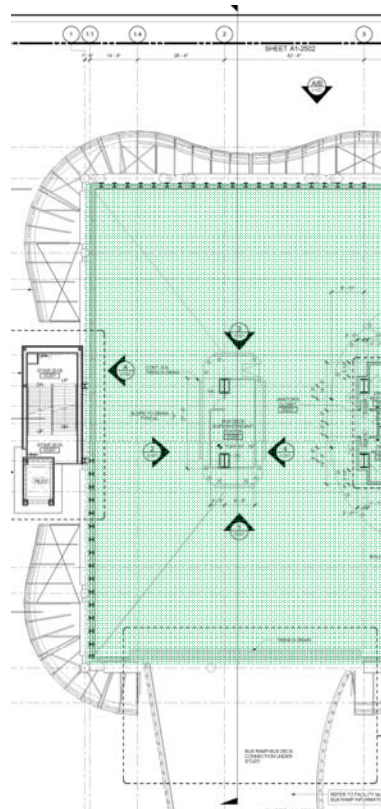
West Emergency Generator Depressed floor framing in NW corner of Second Level

ASI # 0018

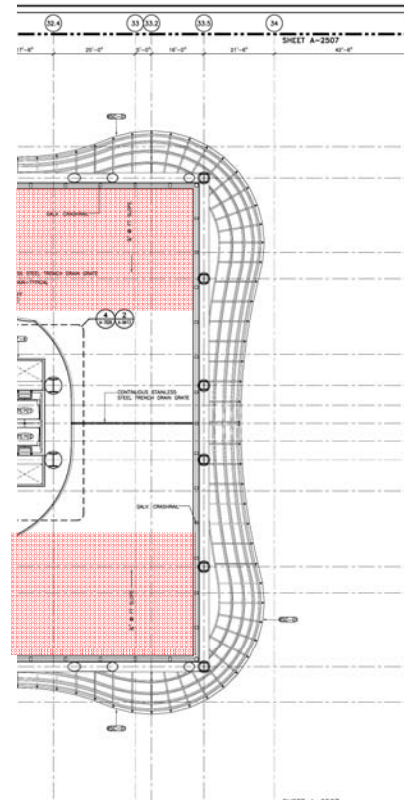
BUS DECK LEVEL



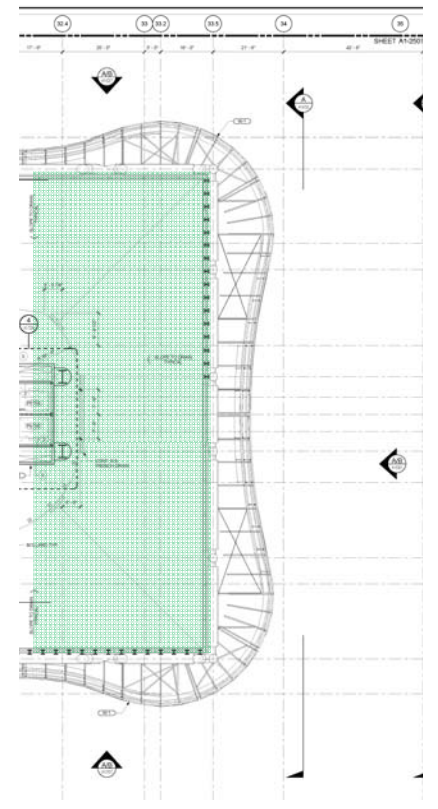
100%DD



50%CD

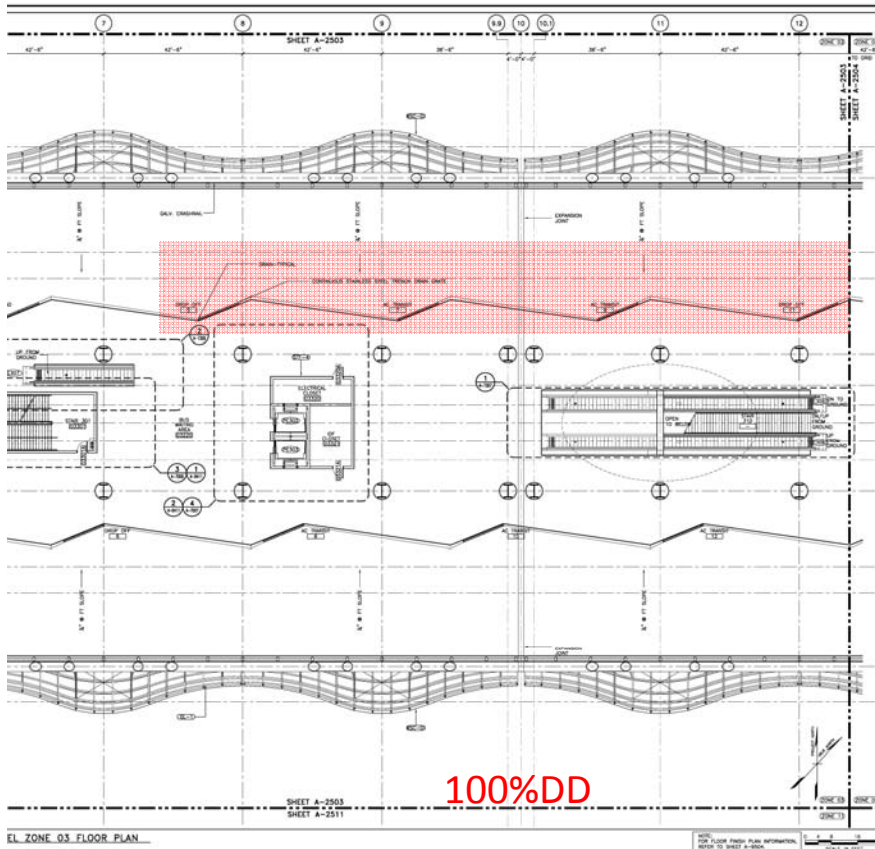
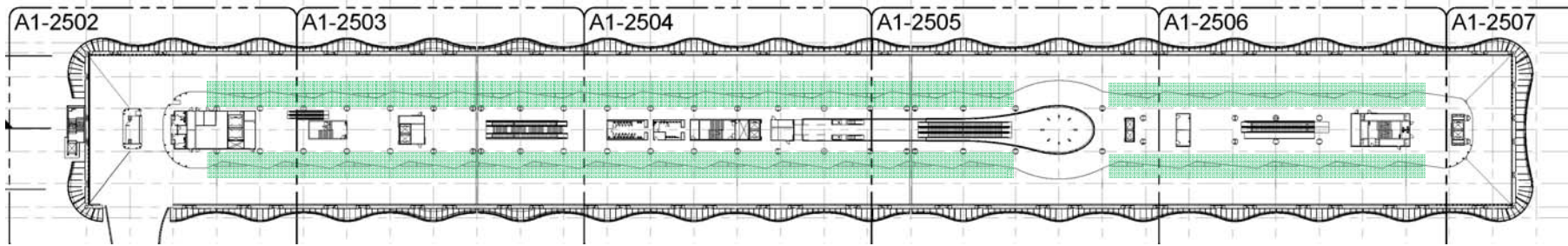


100%DD

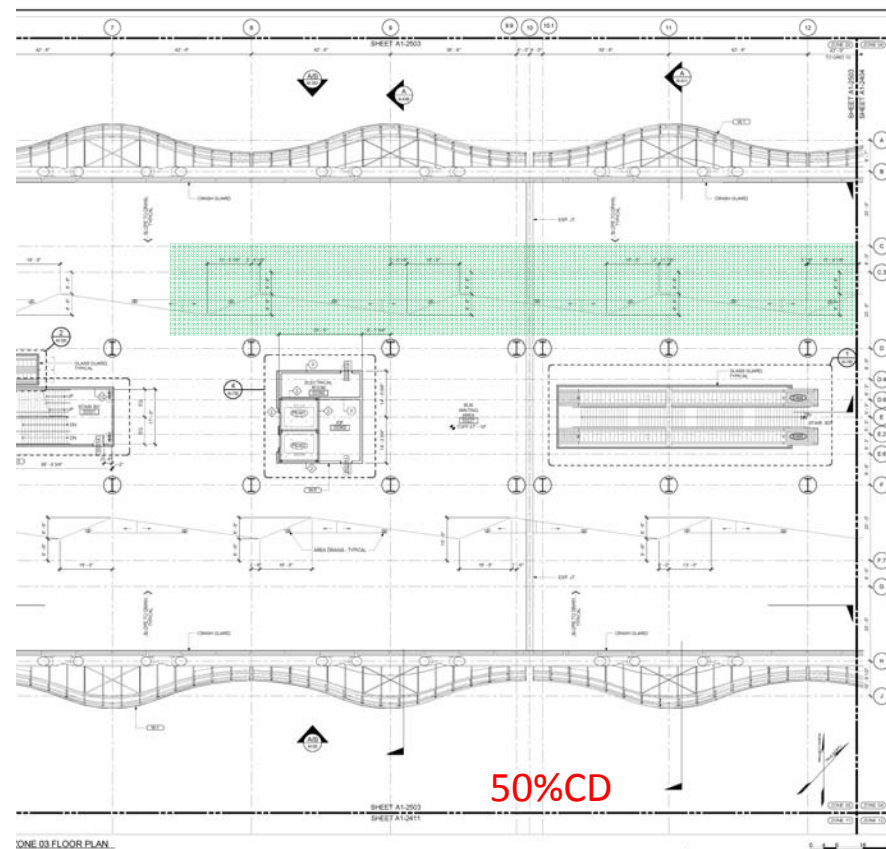


50%CD

BUS DECK LEVEL



100%DD



50%CD

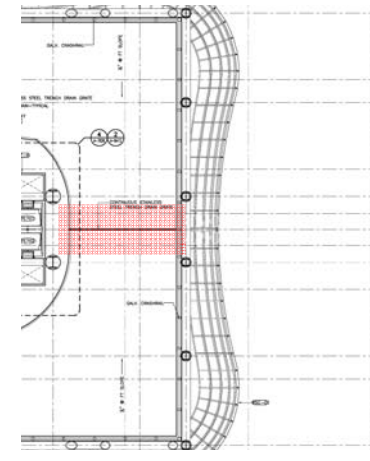
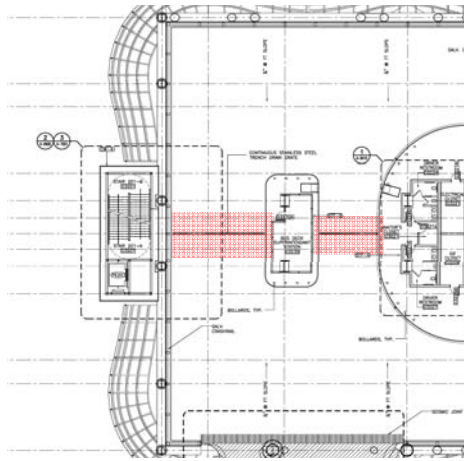
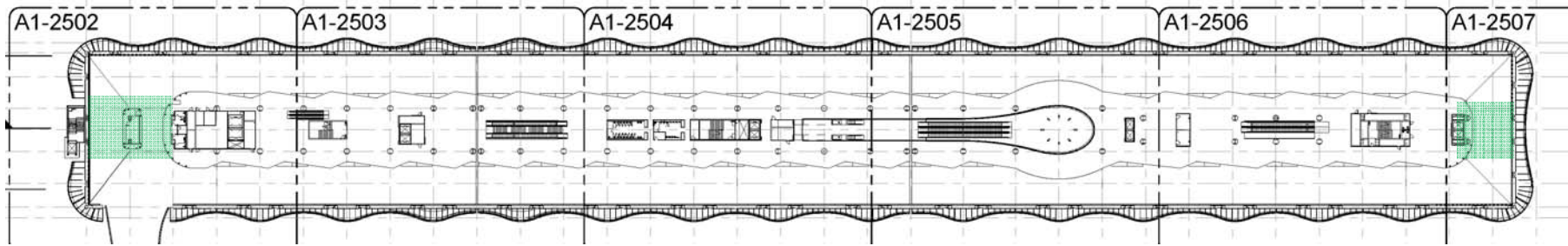


Bus Deck
Eliminated Bus Bay trench drains in favour of area drains

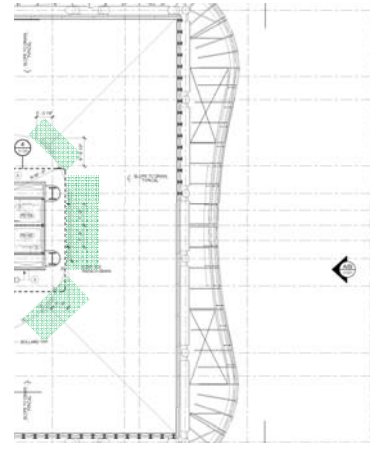
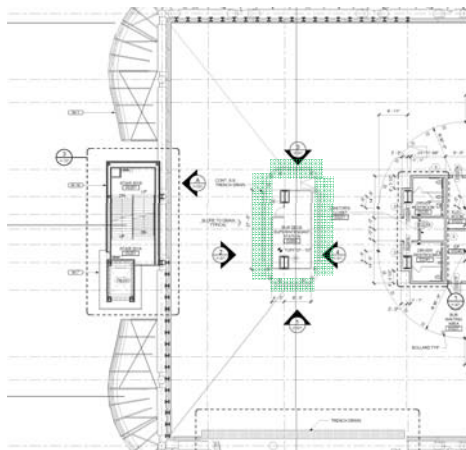
ASI #

0028

BUS DECK LEVEL

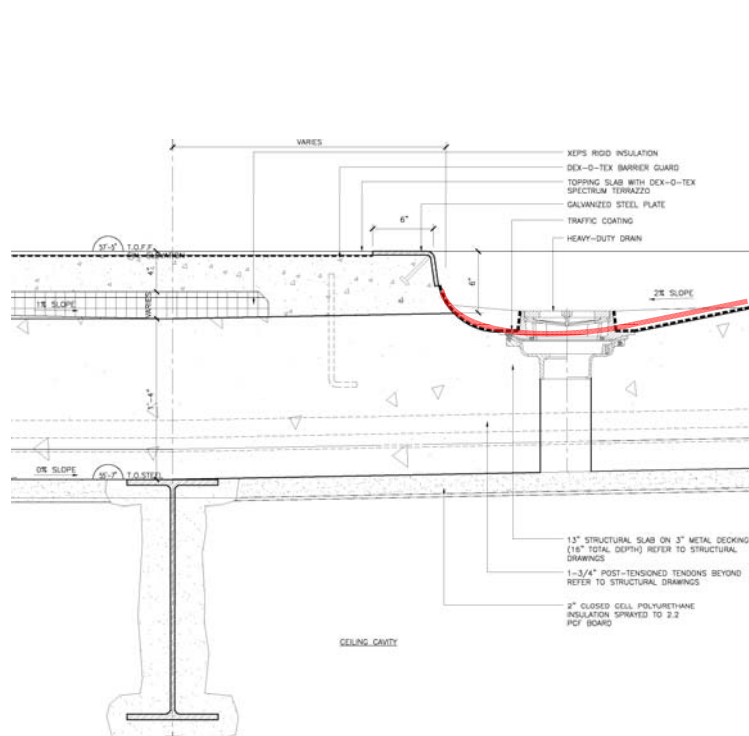
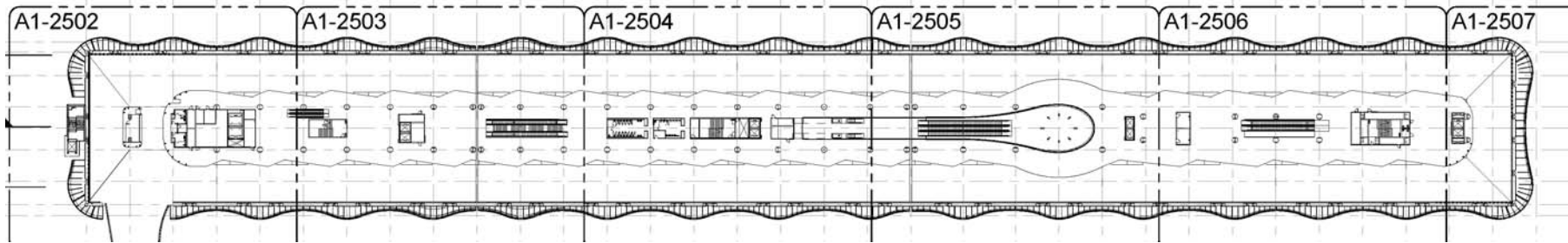


100%DD

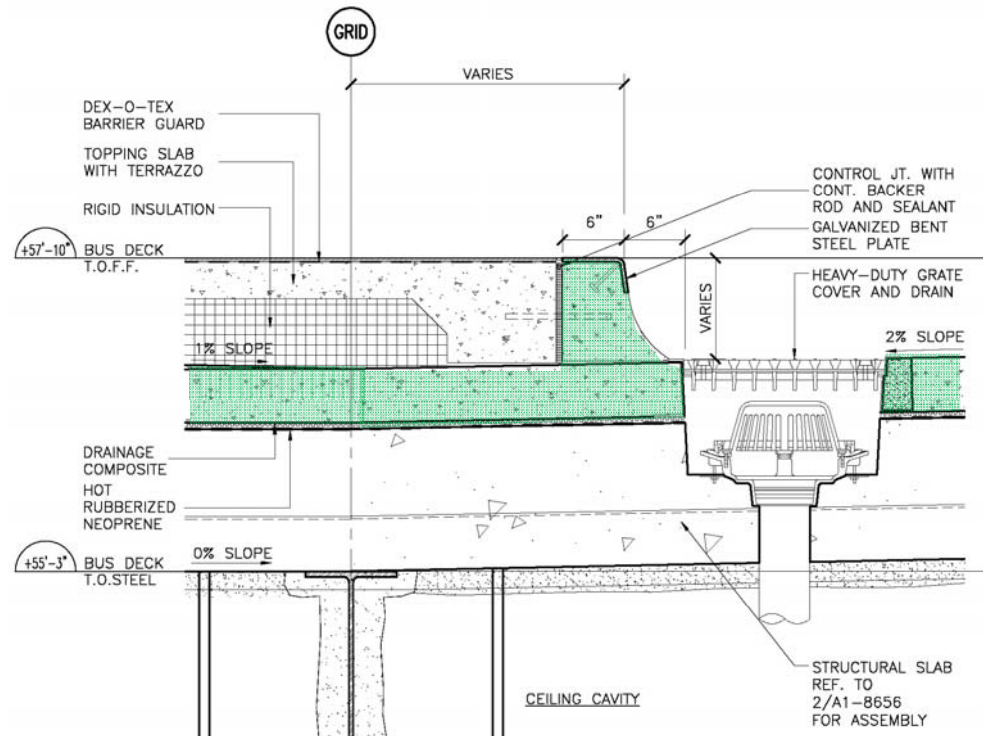


50%CD

BUS DECK LEVEL



100%DD



50%CD



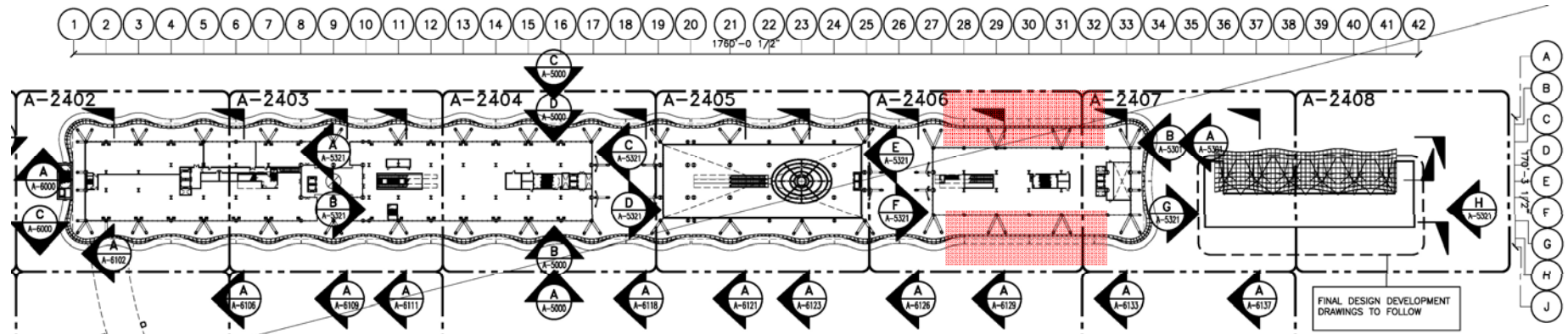
Bus Deck Waterproofing

Change to protected WP membrane under 6" concrete topping

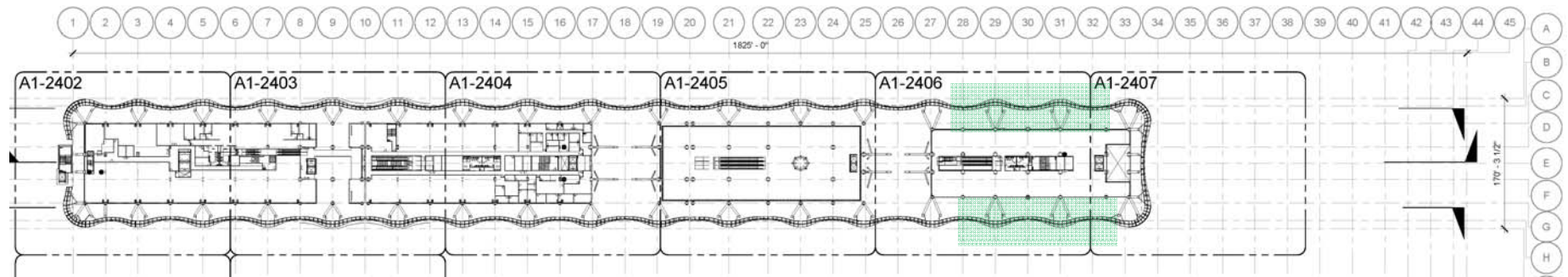
ASI #

0081

SECOND LEVEL



100%DD



50%CD

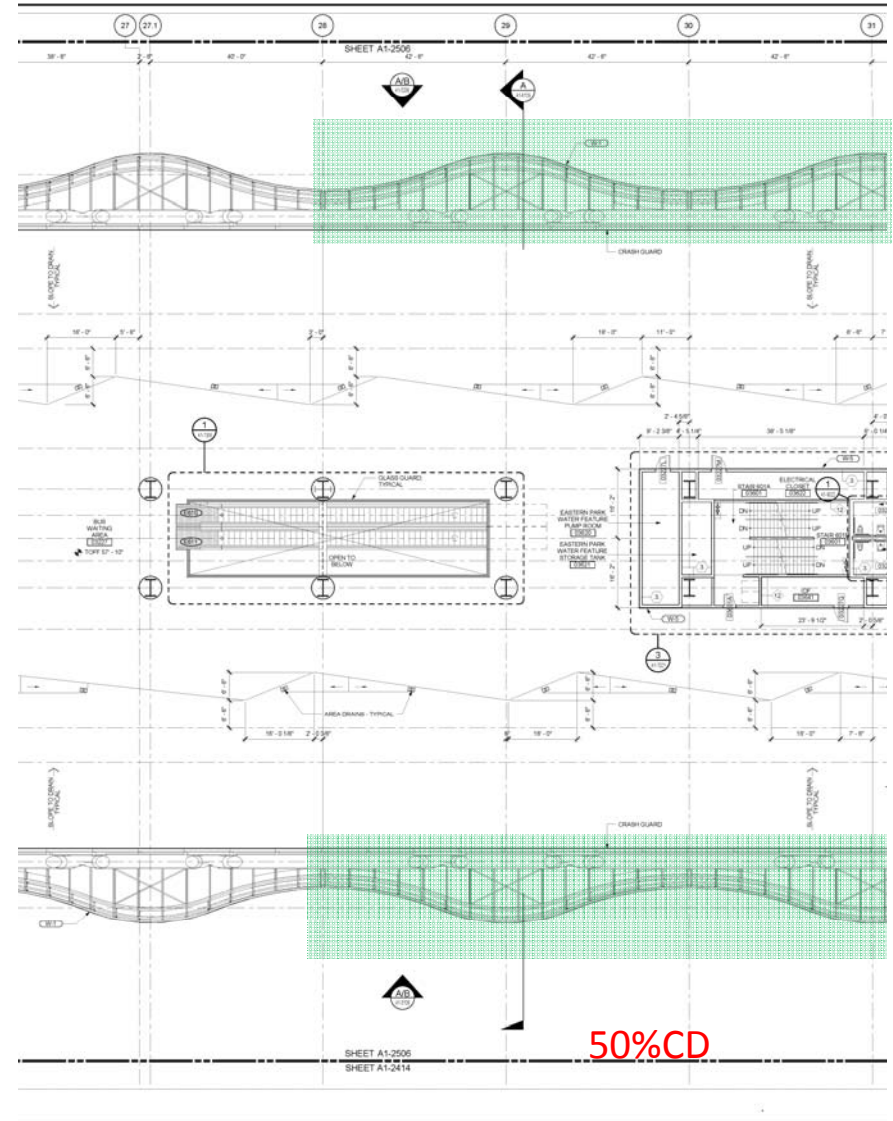
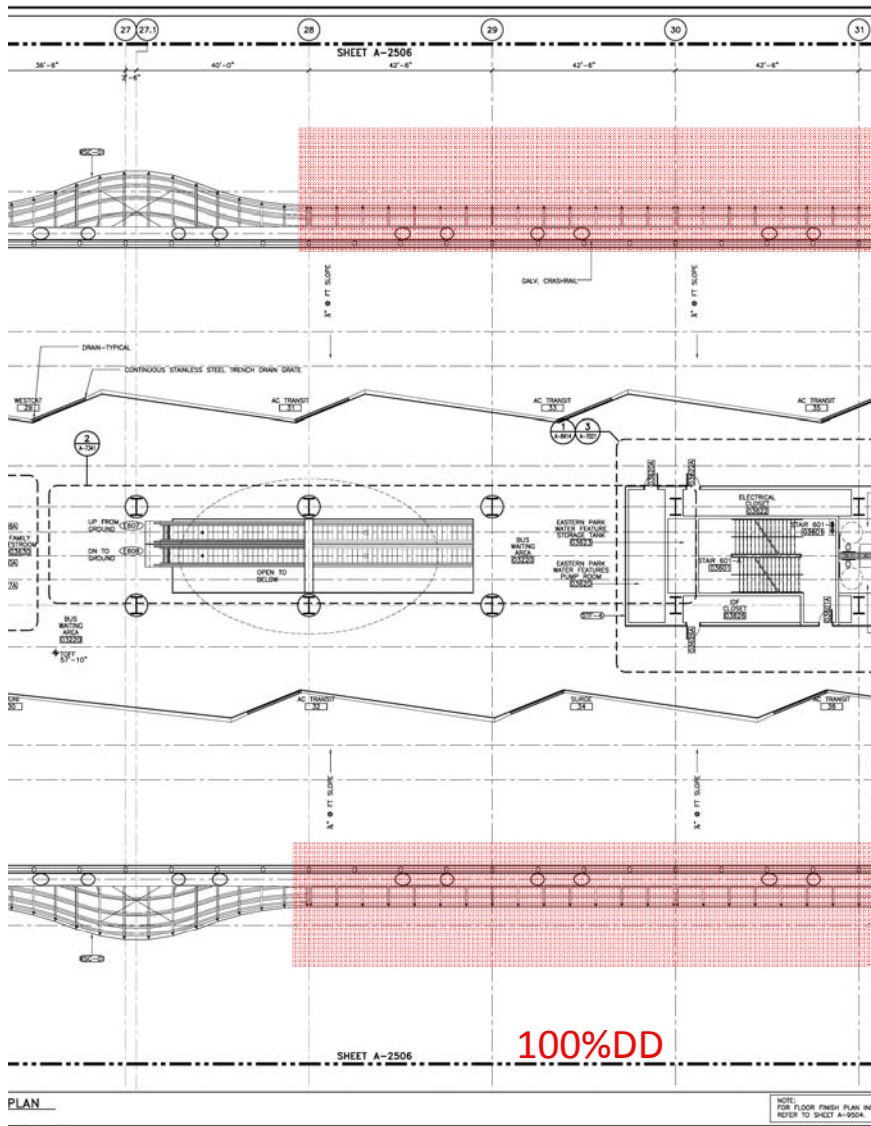


Cladding Systems Revisions Revised Awning geometry (W-1)

ASI #

0054

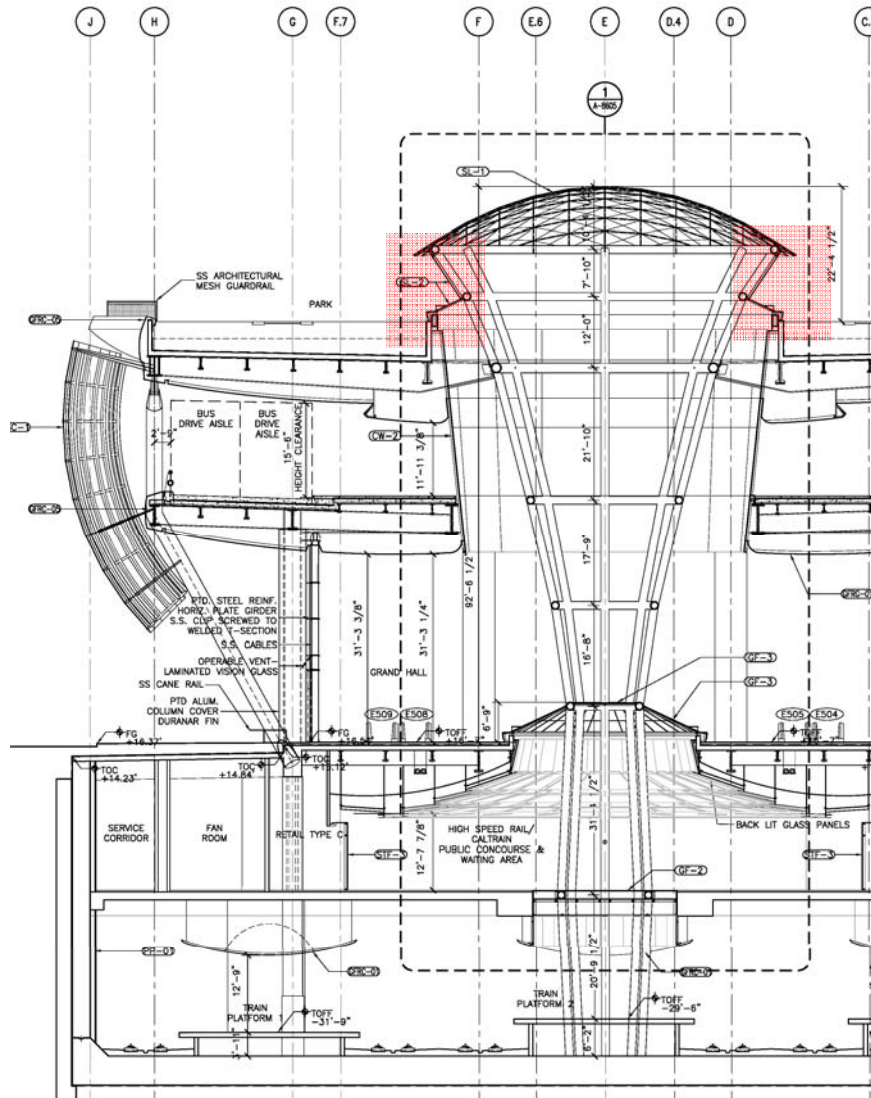
BUS DECK LEVEL



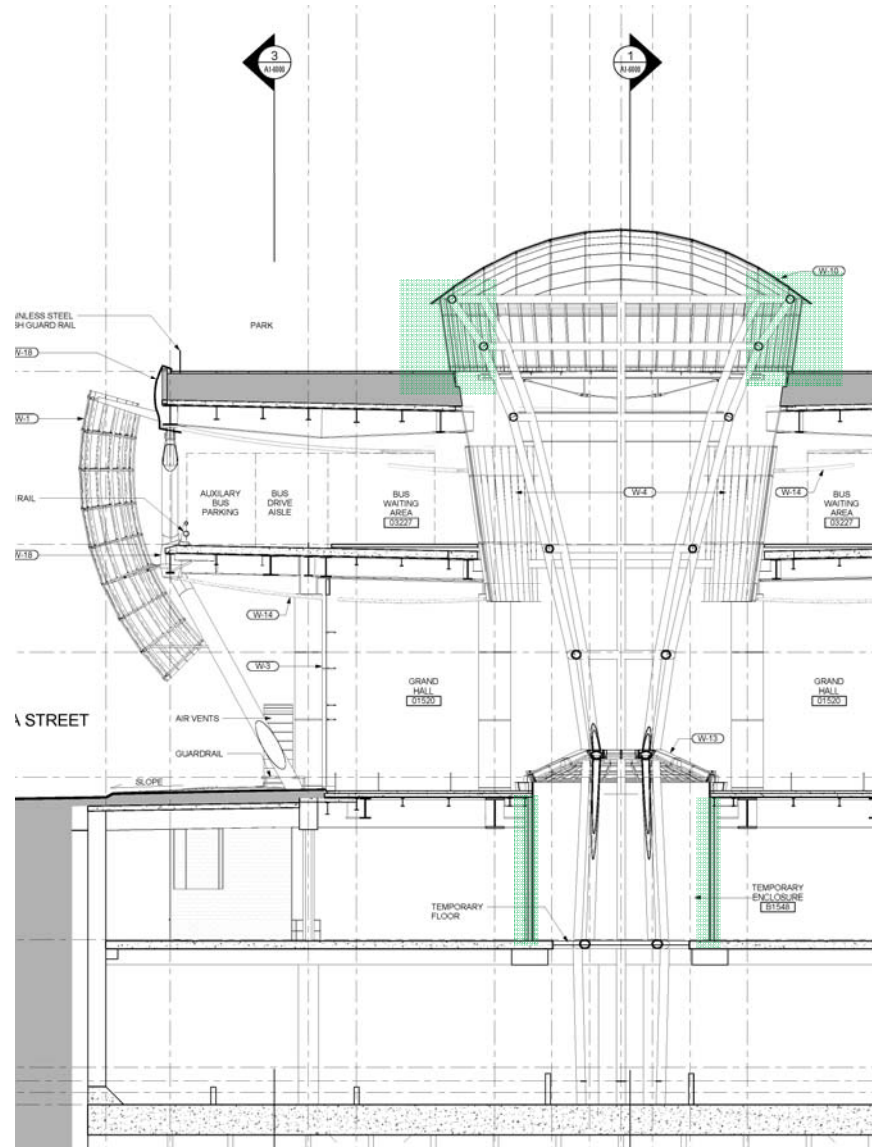
Cladding Systems Revisions Revised Awning geometry at Grid line 29 (W-1)

ASI # 0054

PARTIAL BUILDING SECTION @ GRIDLINE 23

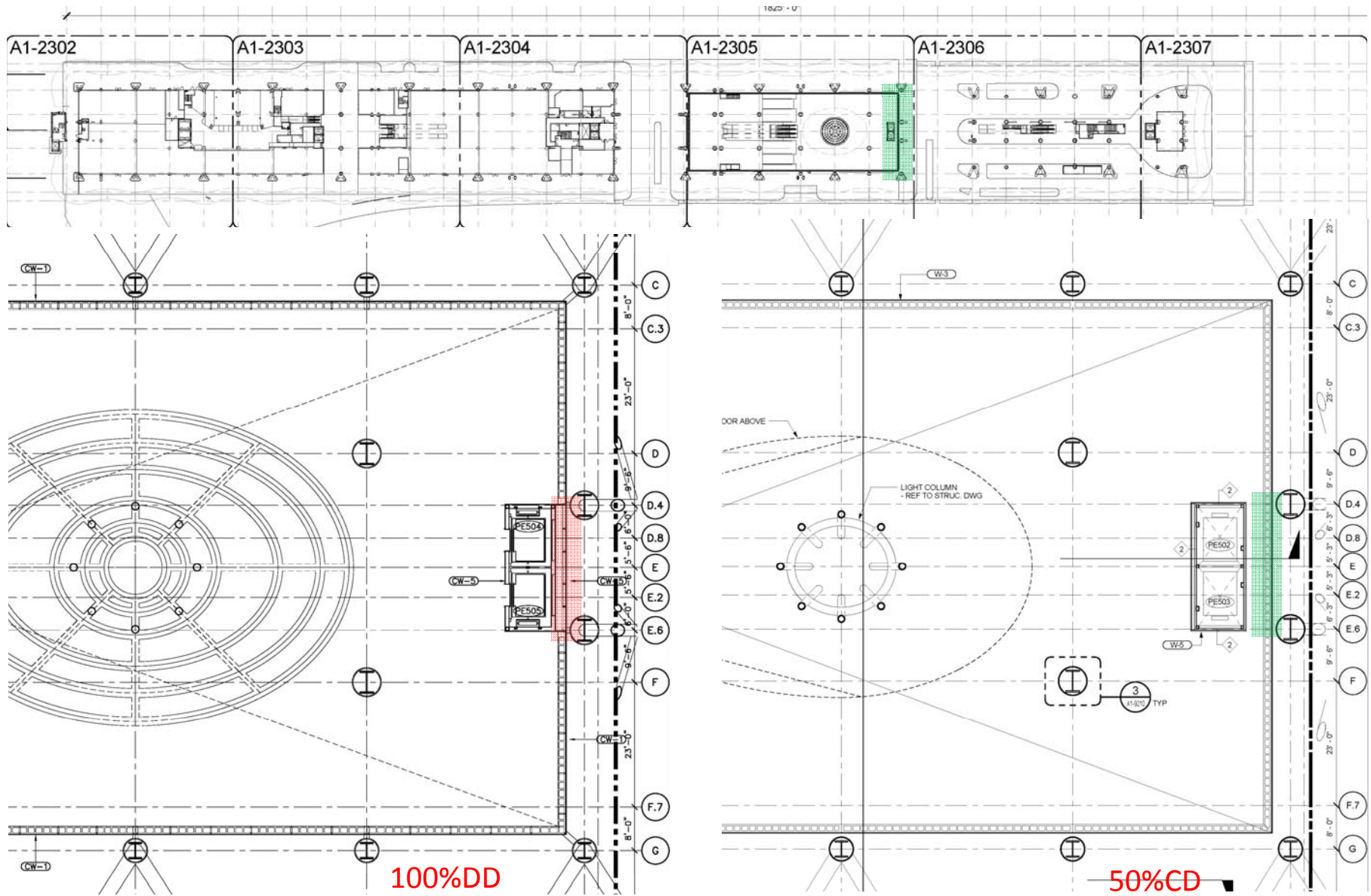


100%DD



50%CD

GROUND LEVEL



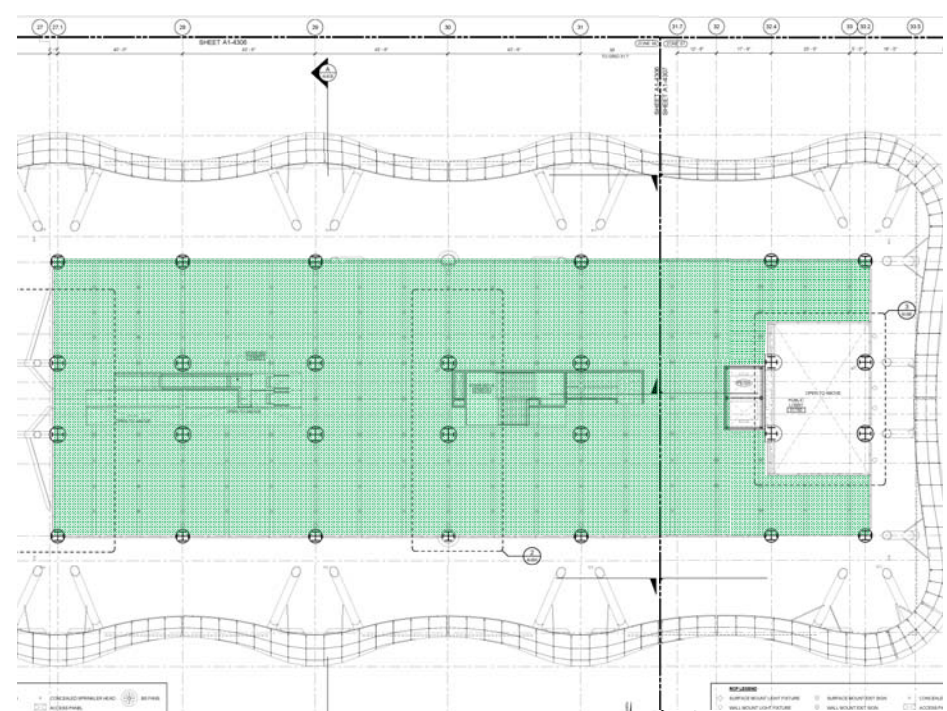
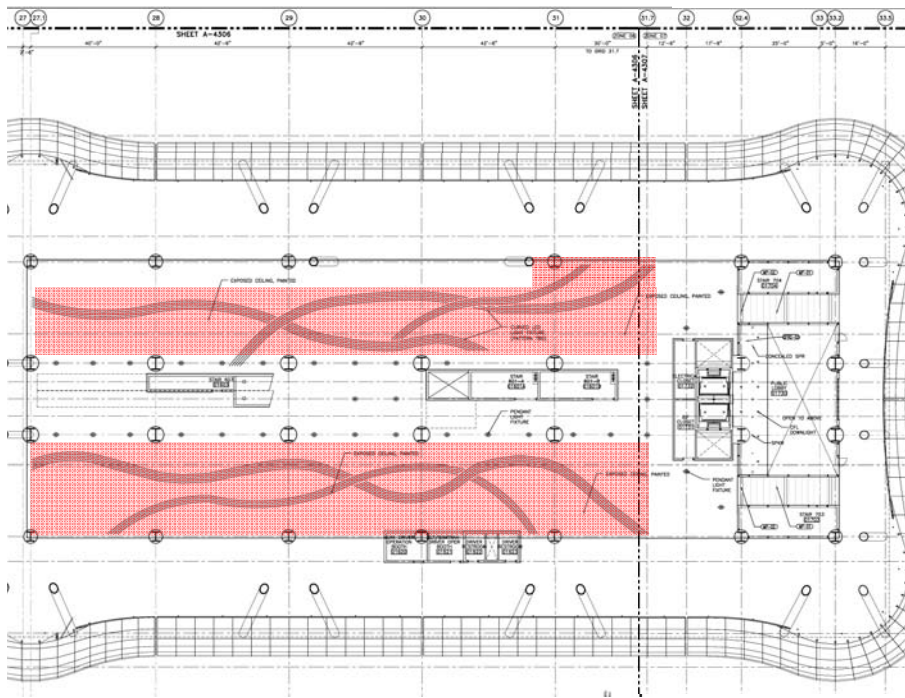
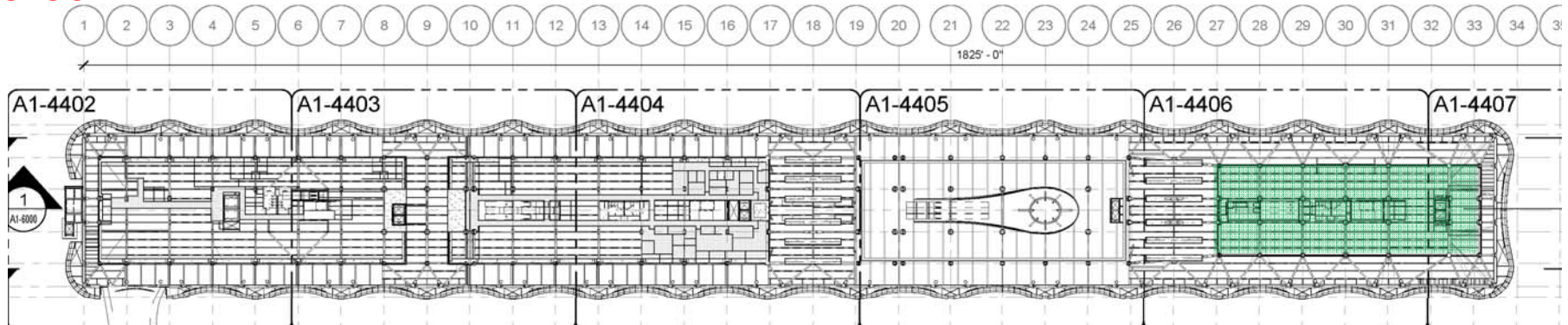
Cladding Systems Revisions

Revised Grand Hall east elevation from W-2 to W-3 system

ASI #

0056

GROUND LEVEL



100%DD

50%CD

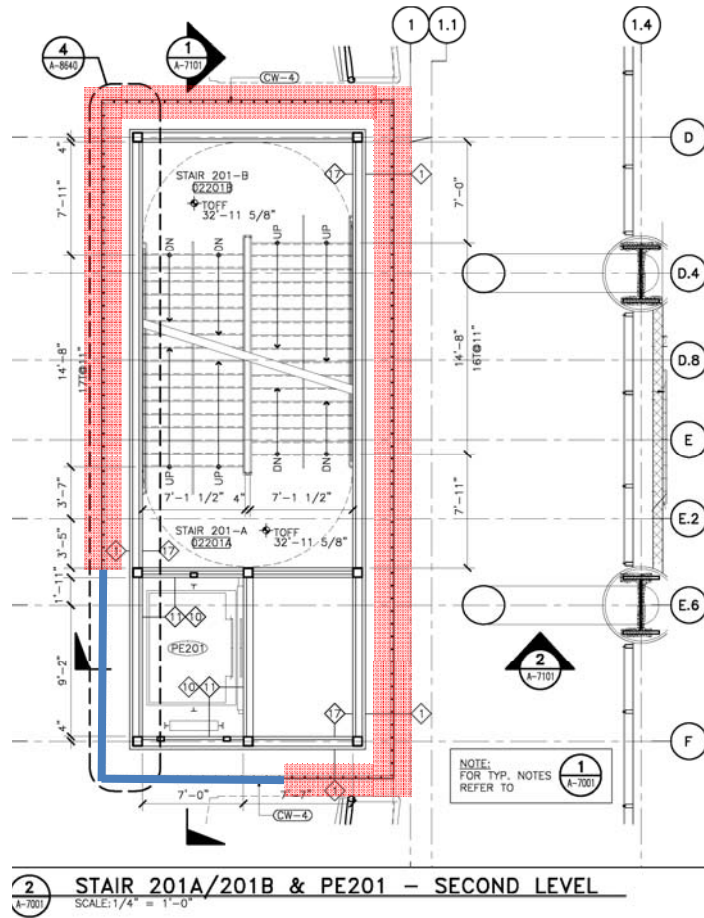


Cladding Systems Revisions
 Added ceiling scope in Muni Bus Plaza (W-14)

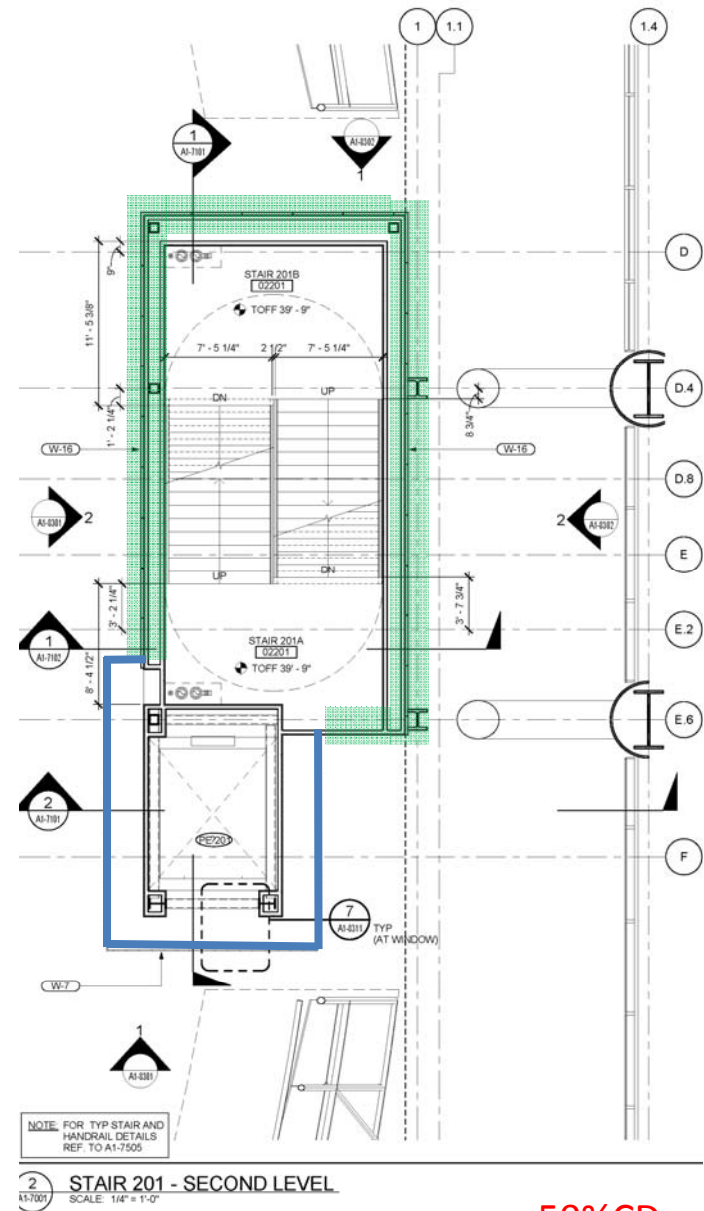
ASI #

0064

SECOND LEVEL



100%DD



50%CD

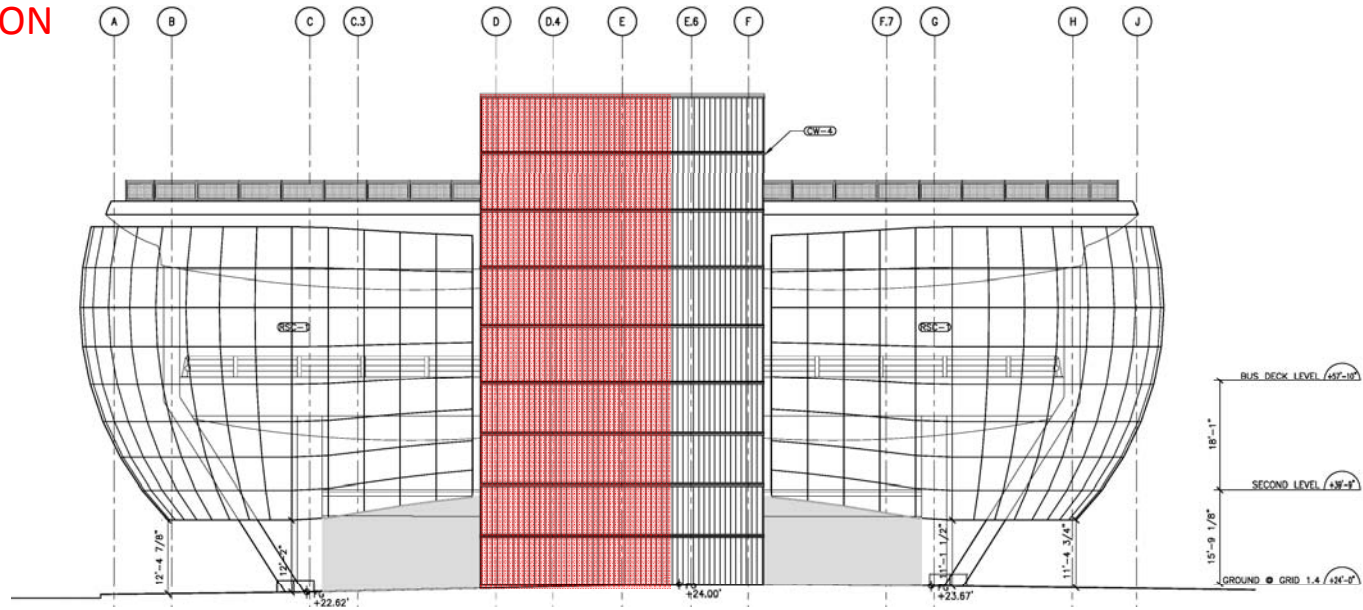


Cladding Systems Revisions – Stair 201
Replaced channel glass areas with metal panel (W-7 & W-16)

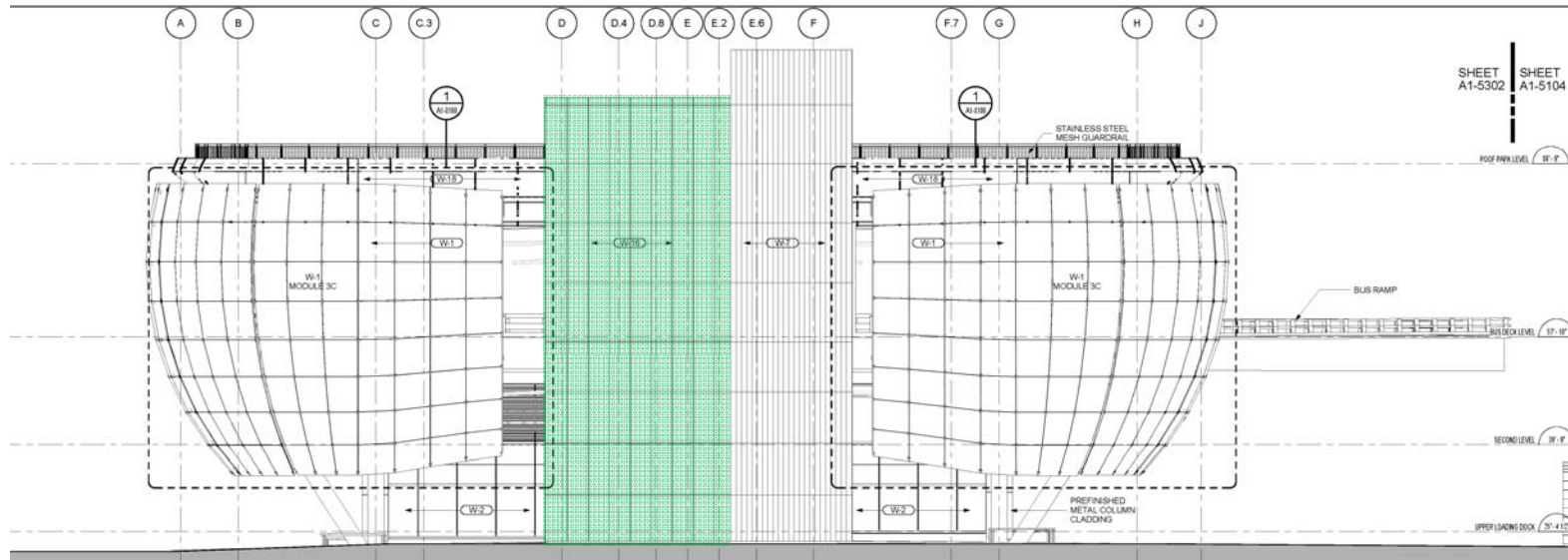
ASI #

0065

WEST ELEVATION



100%DD



50%CD



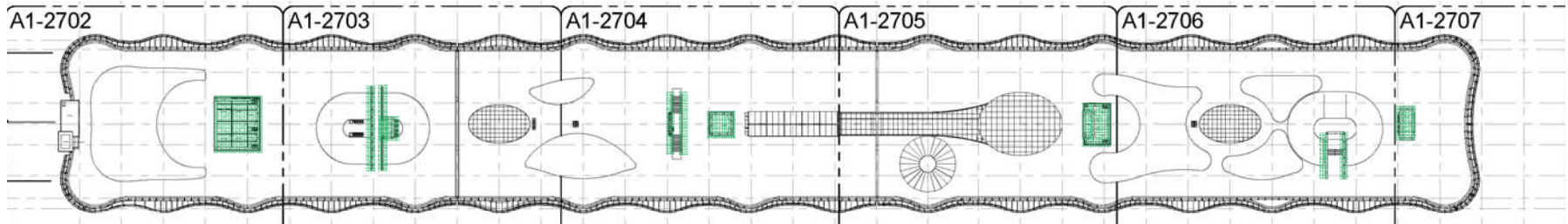
Transbay Transit Center

Cladding Systems Revisions – Stair 201
 Replaced channel glass areas with metal panel (W-7 & W-16)

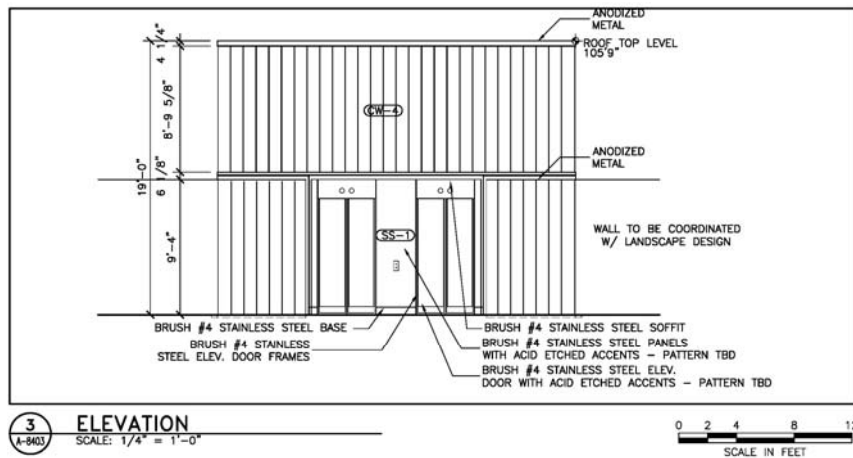
ASI #

0065

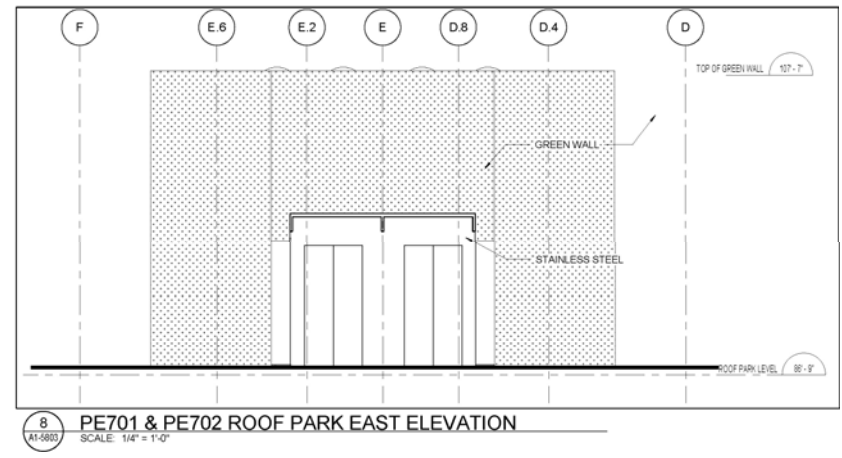
ROOF PARK LEVEL



50%CD



100%DD



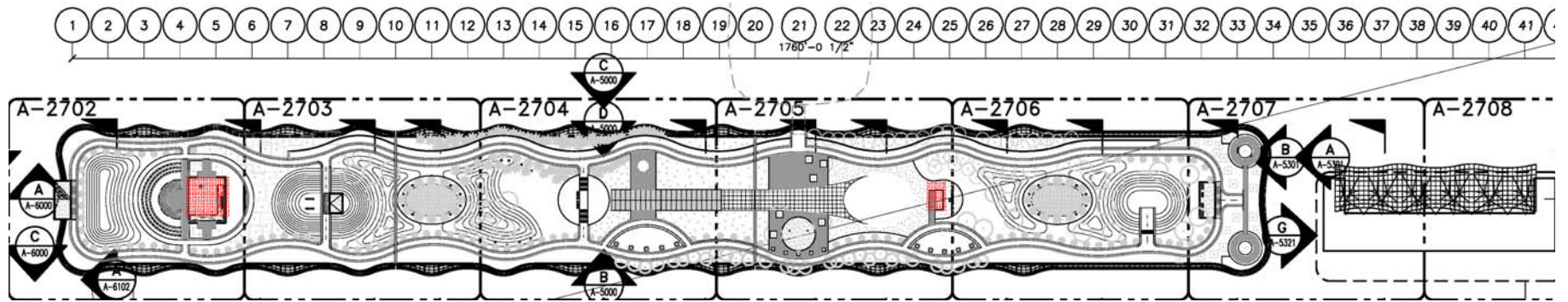
50%CD



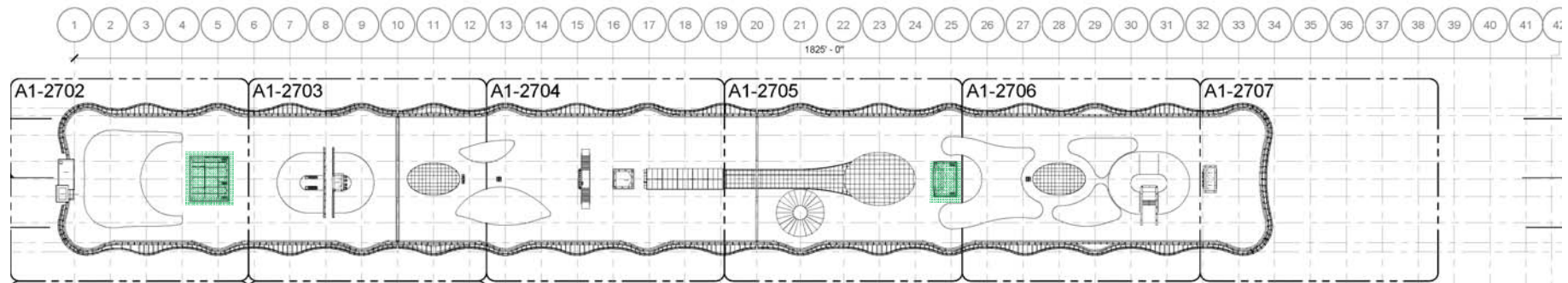
Cladding Systems Revisions at Roof Park Level Revision to "Green Wall" & added plaster back-up (W-17 & 19)

ASI # 0066
0067

ROOF PARK LEVEL



100%DD



50%CD

Green Roofs

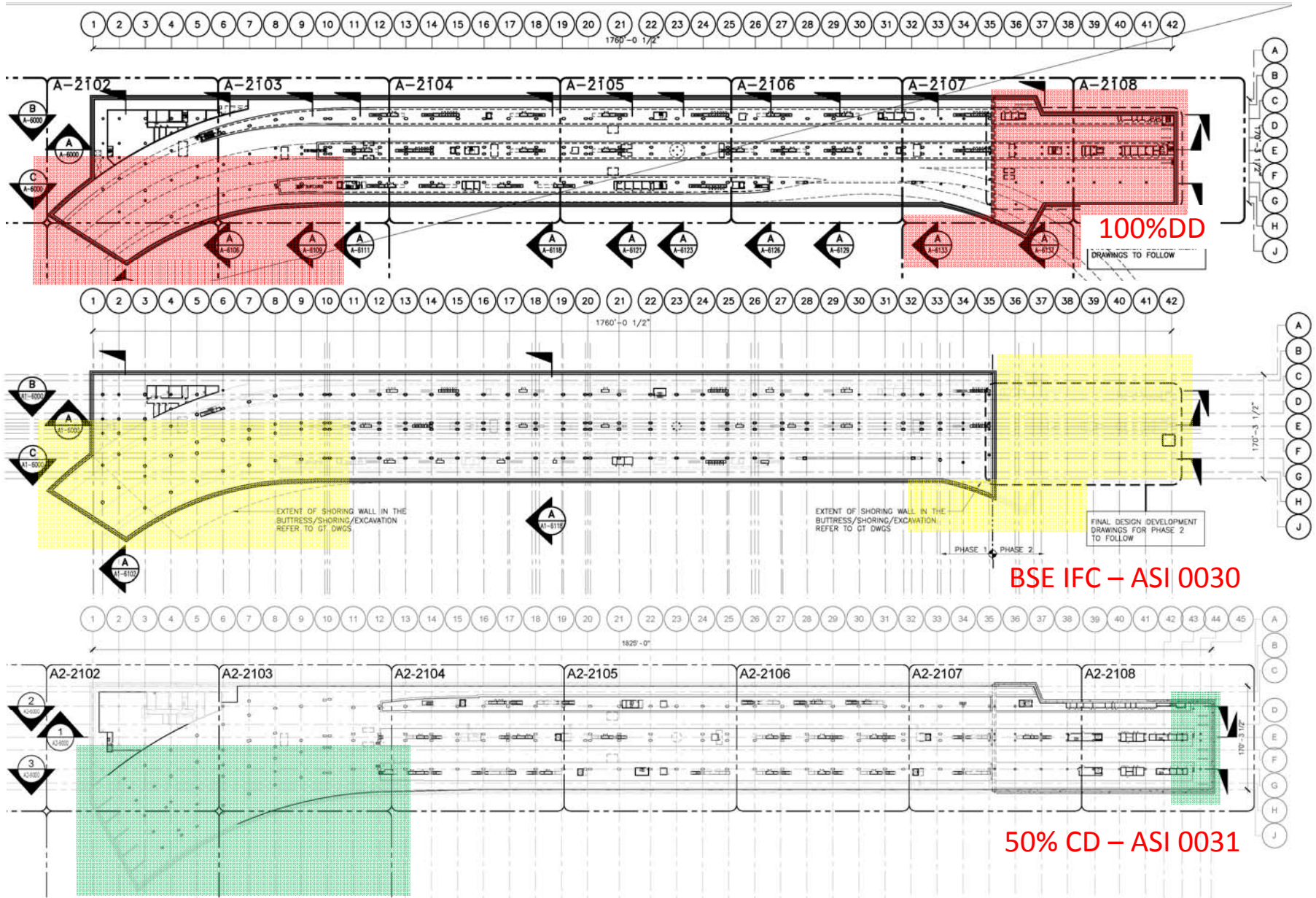
Changed 2 Park building roofs to "green roof" from PVC roof

ASI #

0004



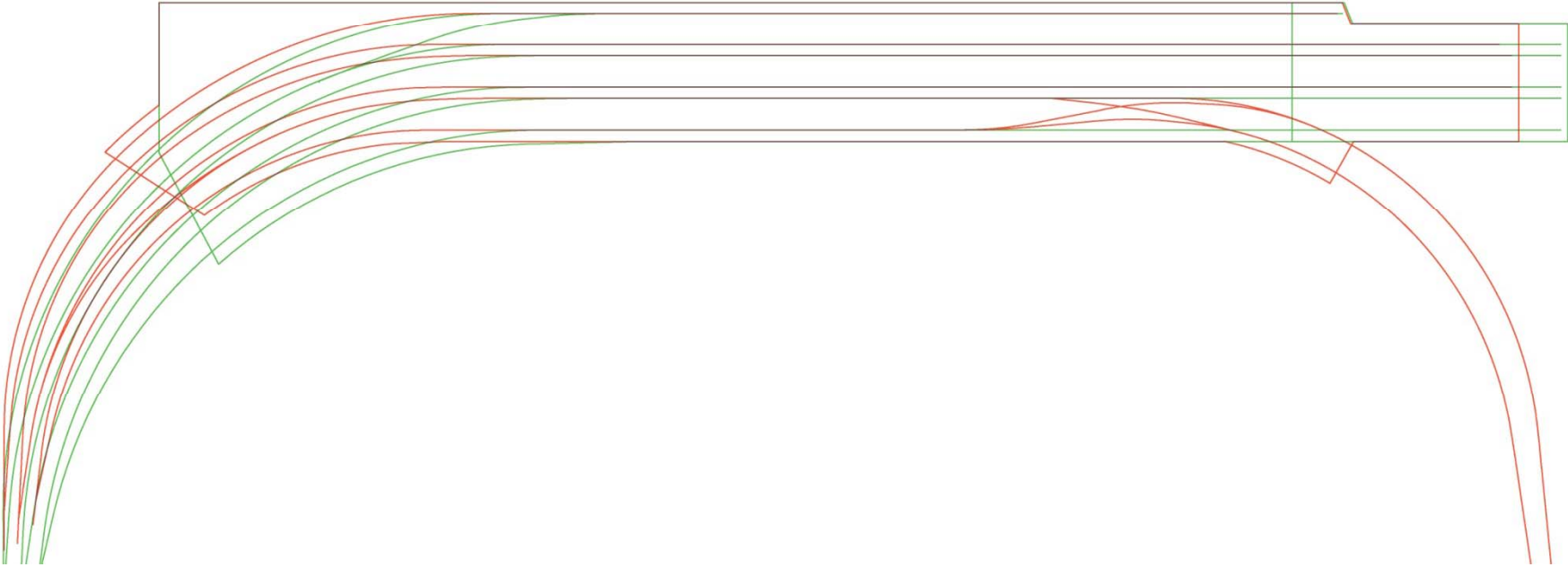
TRAIN PLATFORM LEVEL



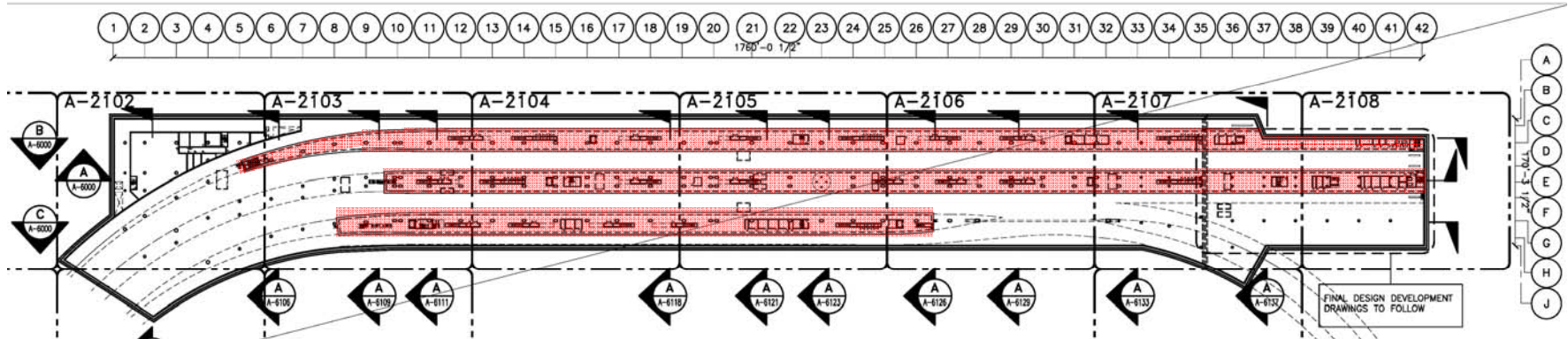
CHRS Rail Re-alignment Changes to outline of the Train Box

ASI # 0030
0031

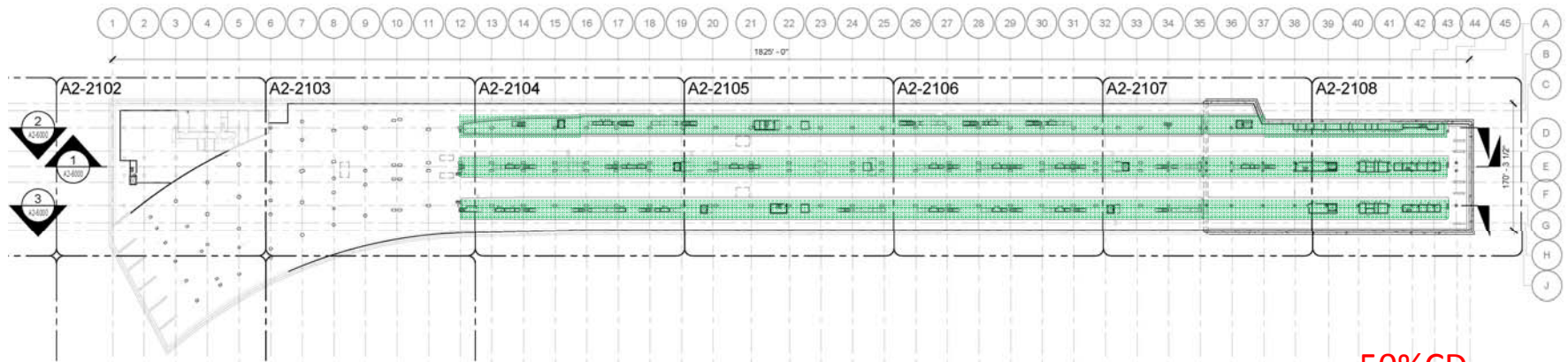
TRAIN PLATFORM LEVEL



TRAIN PLATFORM LEVEL



100%DD



50%CD



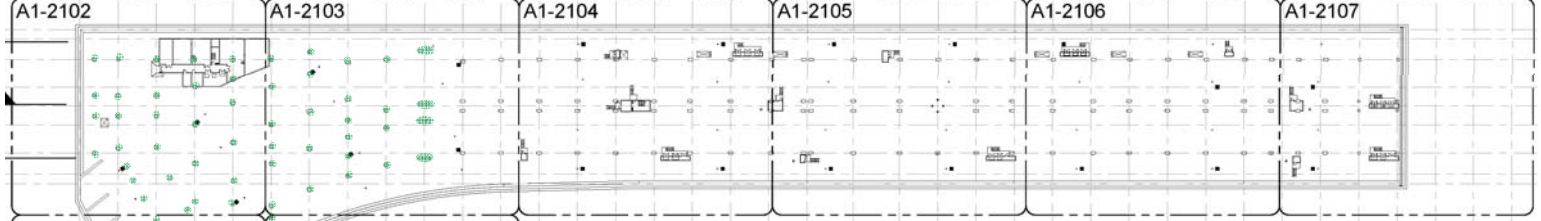
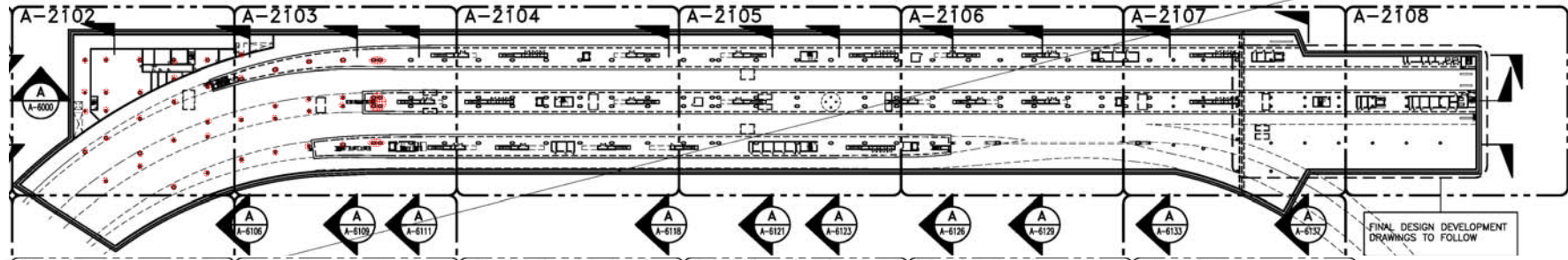
CHRS Rail Re-alignment

Platform geometry changes /CHSR & Caltrain Platform "Flip"

ASI #

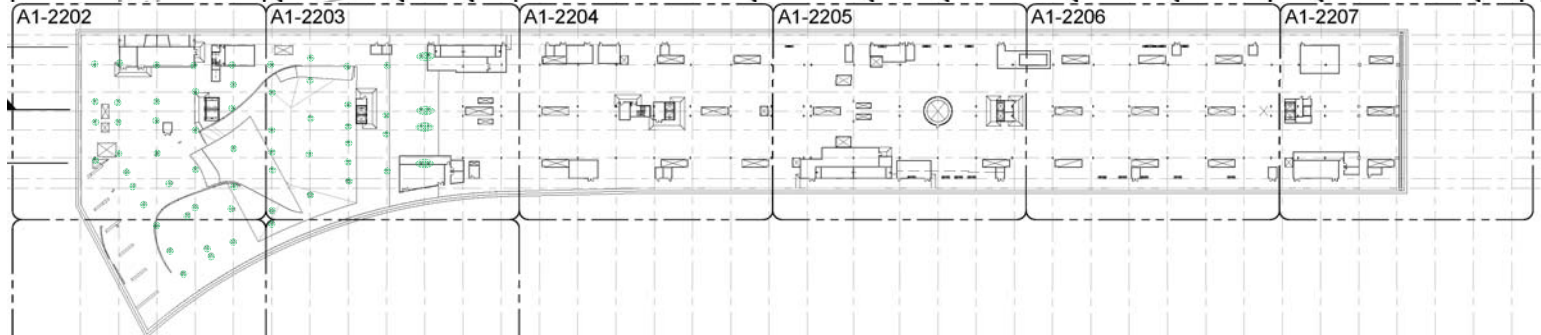
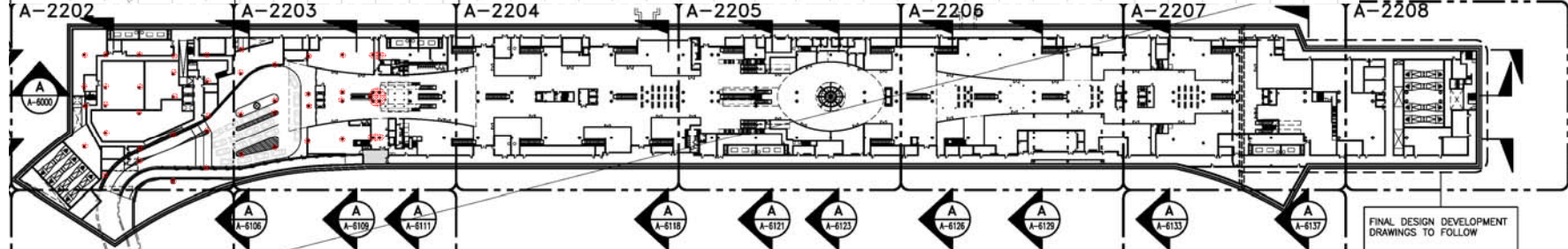
0032
0033

TRAIN PLATFORM LEVEL



100%DD

LOWER CONCOURSE LEVEL



50%CD



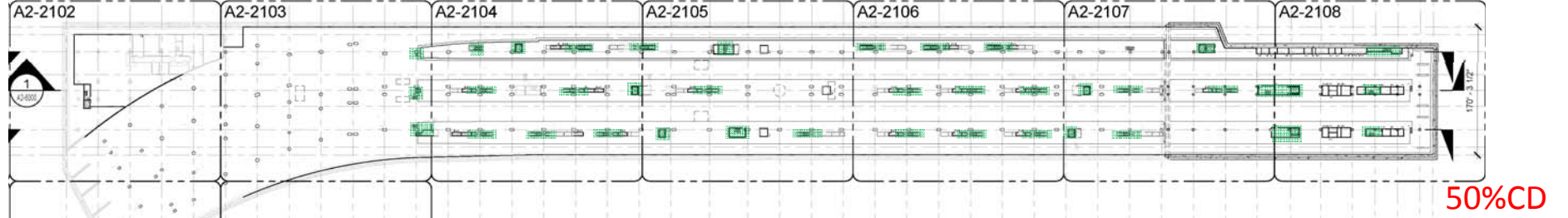
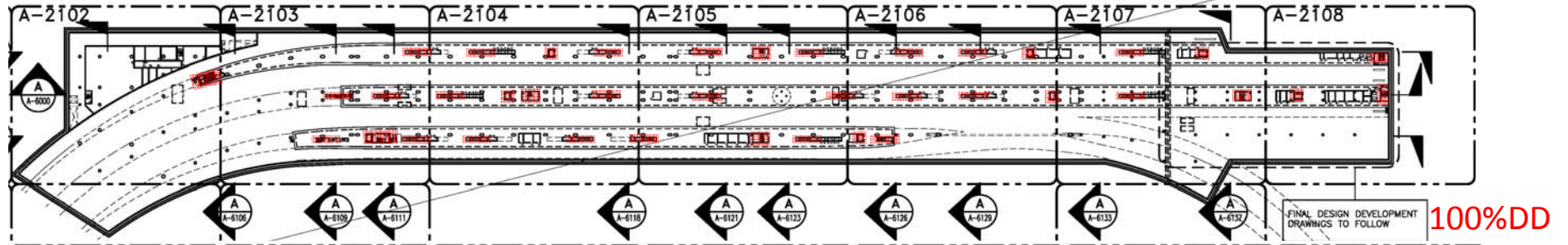
CHRS Rail Re-alignment

Structural changes to west end of Train Box, w/ additional transfers

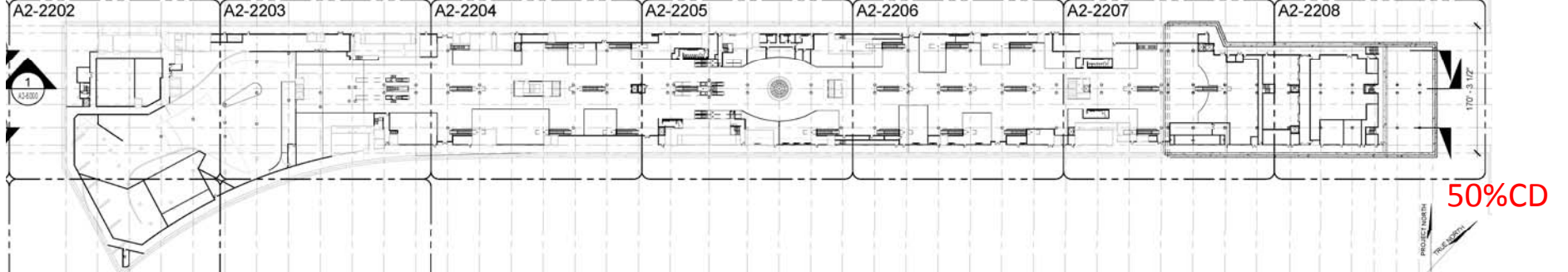
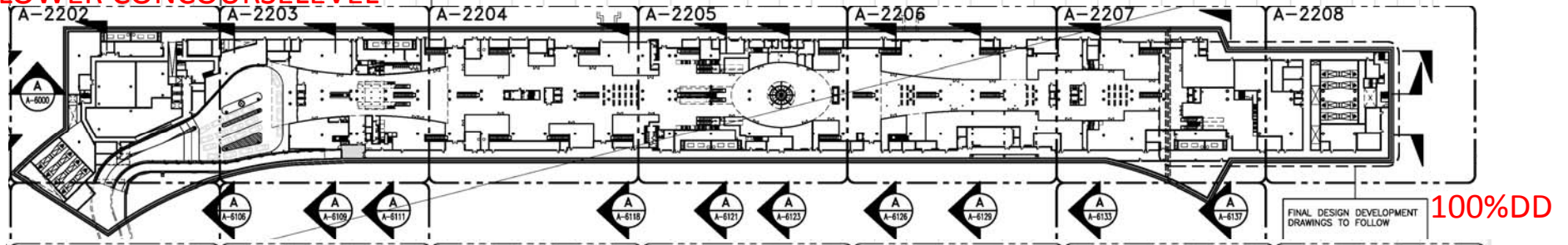
ASI #

0034

TRAIN PLATFORM LEVEL



LOWER CONCOURSE LEVEL



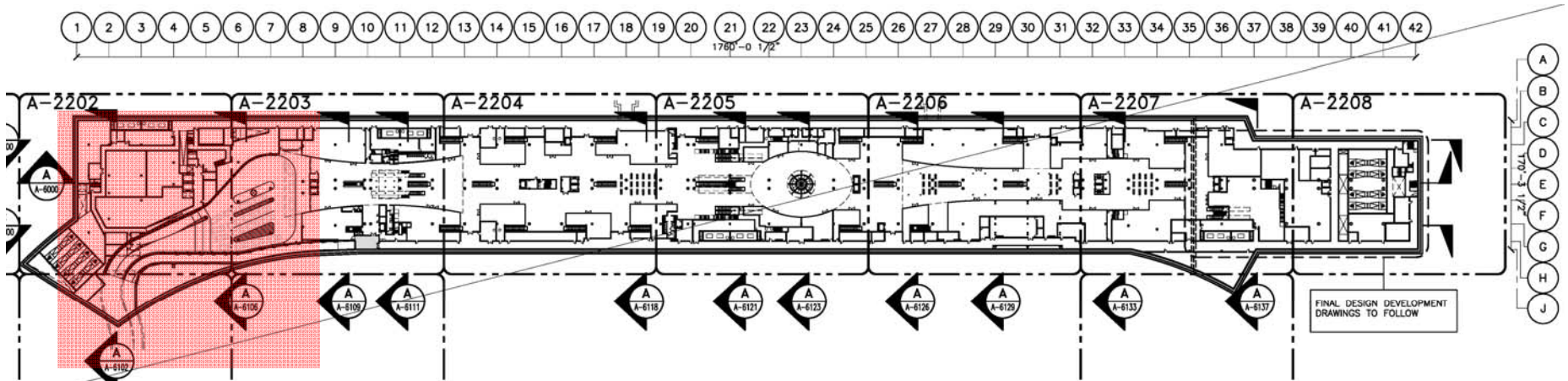
CHRS Rail Re-alignment

Vert. circulation changes; different length & height of platforms

ASI #

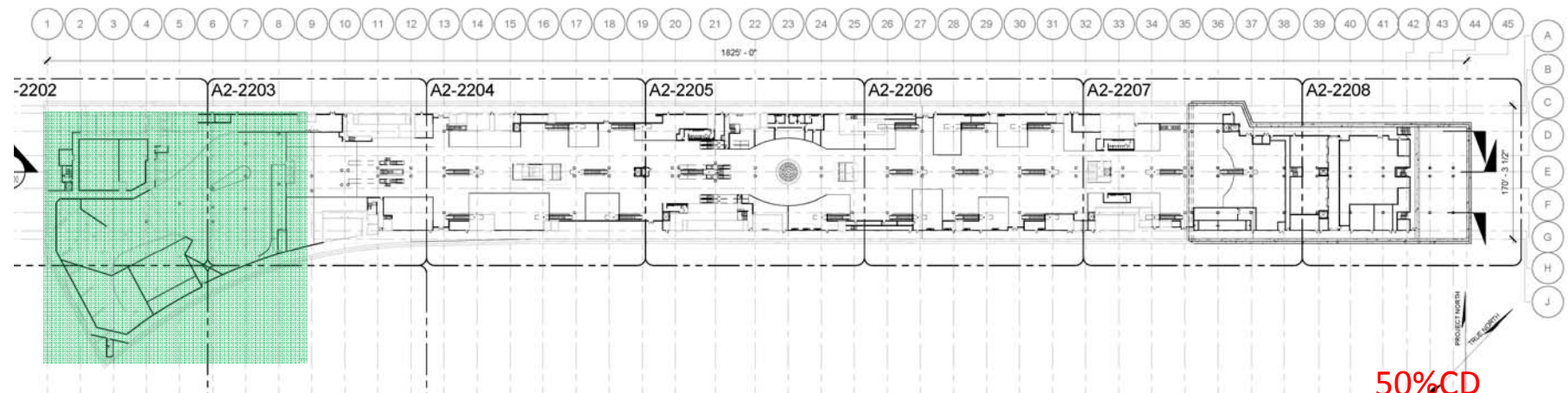
0035
0036

LOWER CONCOURSE LEVEL



100%DD

- Taxi/Bike ramp redesign due to flip & shift
- Relocation of Bike Storage area
- Program under Taxi ramp revised due to limited clearance



50%CD

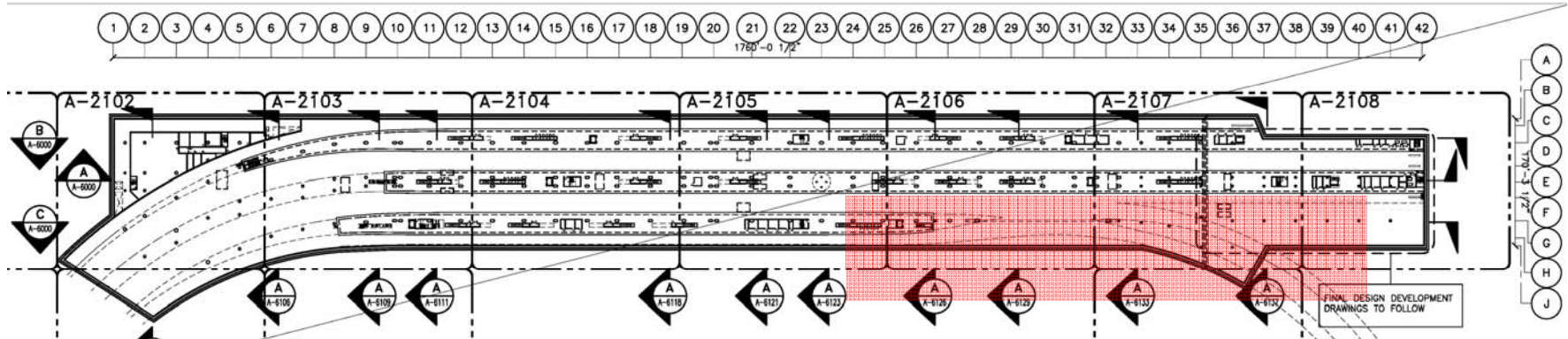


CHRS Rail Re-alignment

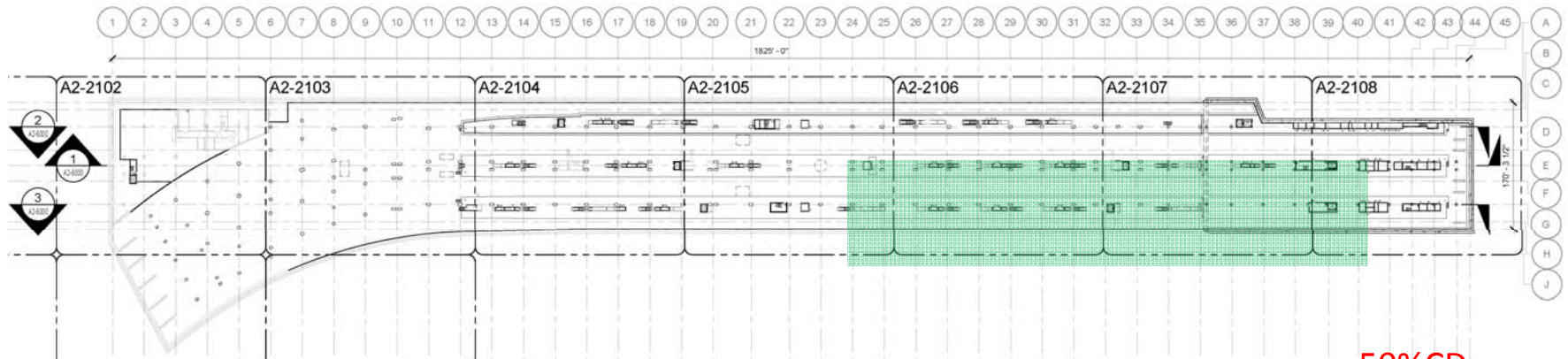
Taxi/Bike ramps redesign due to flip & shift, relocation of bike storage^{ASI #}

0037
0045
0046

TRAIN PLATFORM LEVEL



100%DD



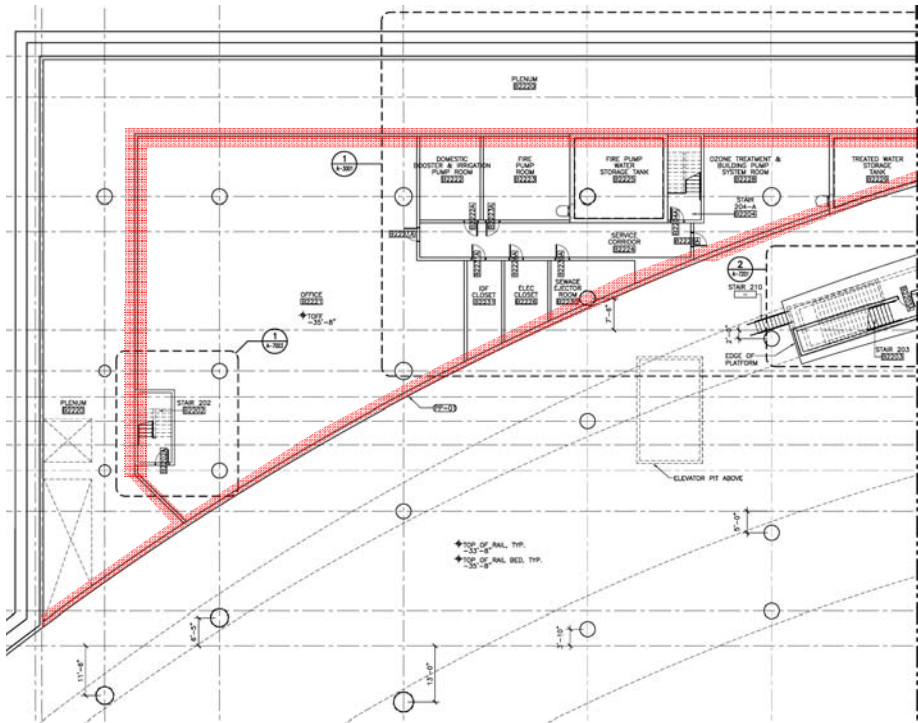
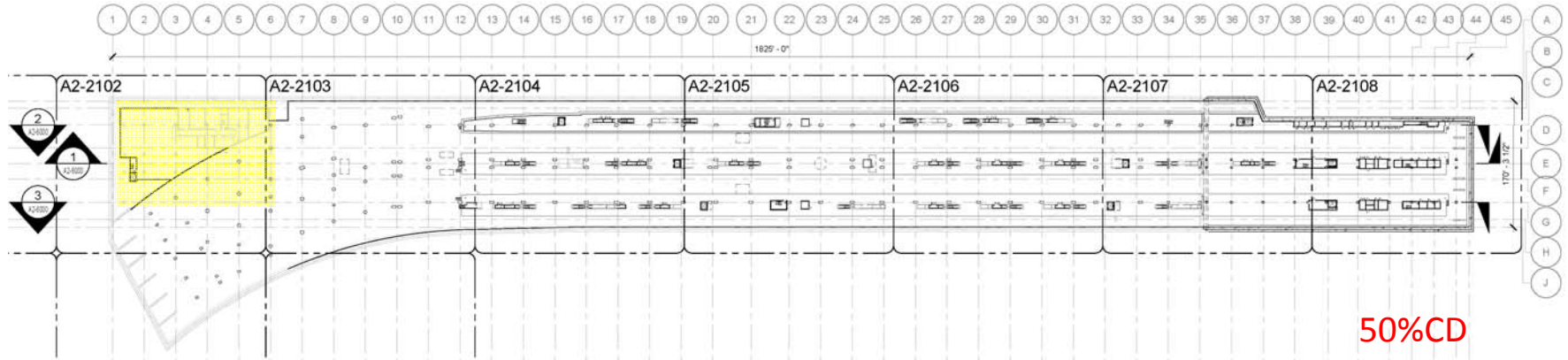
50%CD



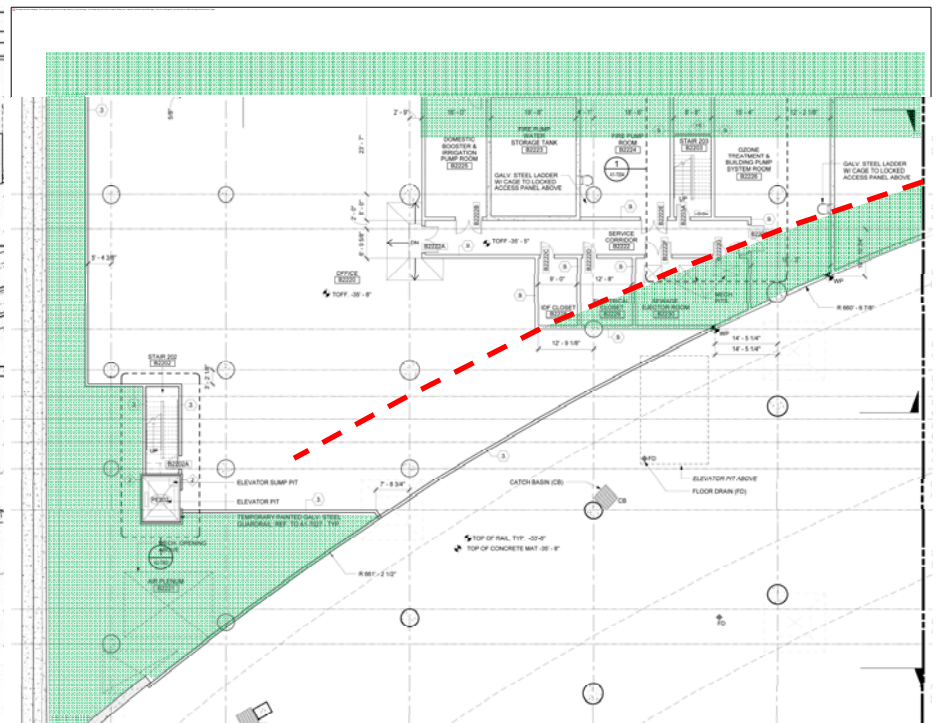
CHRS Rail Re-alignment
Eliminate cross-over, structural arch and tail track

ASI # 0038
0039

TRAIN PLATFORM LEVEL



100%DD



50%CD



CHRS Rail Re-alignment Redesign of MEP spaces at Train Platform Level

ASI #

0042