



Transbay Transit Center

# Transbay Transit Center

## Agenda

- Below-Grade Overview
- Shoring Wall
- Buttress / Drilled Shafts
- Excavation



Transbay Transit Center

## Below-Grade Overview

### Below-Grade Overview:

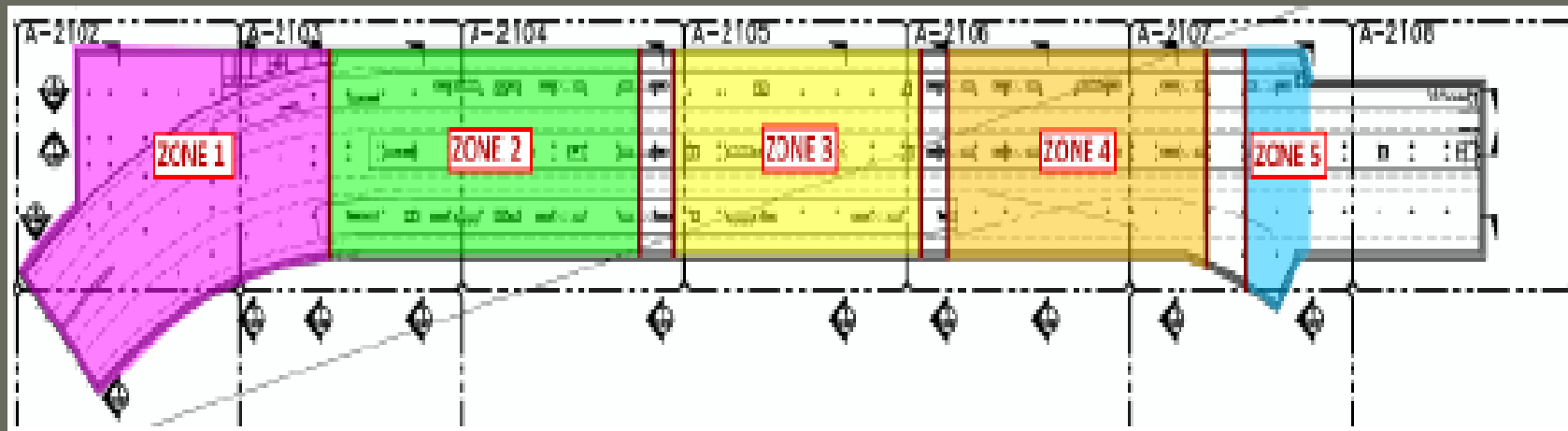
- 1,600 feet long, 180 feet wide, 60 feet deep (show picture)
- Approximately 5 football fields, across three major arteries
  - Beale Street – major approach to Temporary Terminal
  - Fremont Street – major entry into the City from the Bay Bridge
  - First Street – major approach to the Bay Bridge



Transbay Transit Center

# Excavation Zones

Excavation Zones:

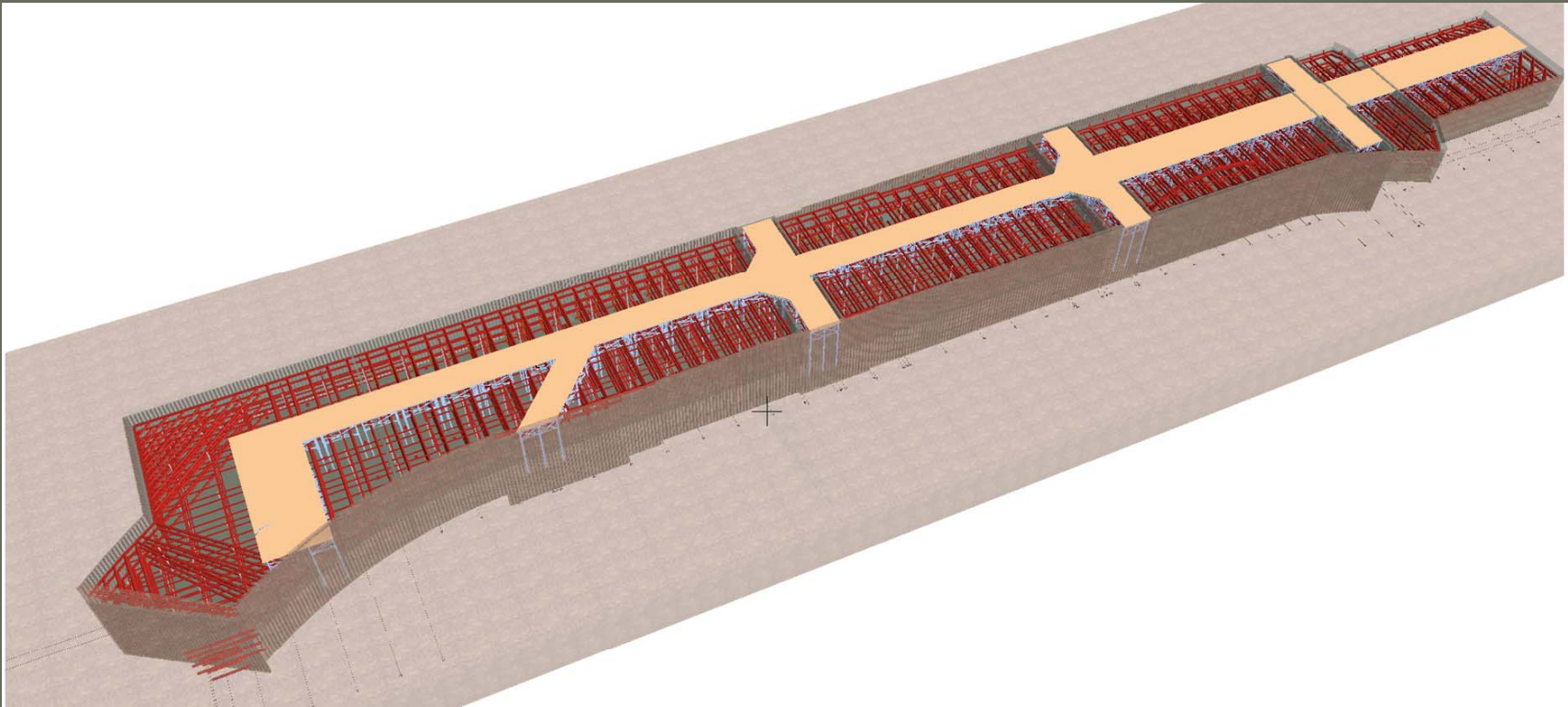




Transbay Transit Center

# Roadway Bridges And Trestle

## Roadway Bridges and Trestle:





Transbay Transit Center

# Shoring Wall

## Shoring Wall:

- 3,500 LF of Deep Soil Mixing Shoring Wall
- Installed with a triple-auger, or similar mixing method (show picture from Test Program)
- Internal Bracing and Trestle
  - 22,000 tons of steel, which is close to twice that of the permanent structure
- Schedule
  - Sequenced into zones to allow construction to occur as areas become available, versus one overall excavation
  - Start – 4th Quarter 2010
  - Finish – 3rd Quarter 2012



Transbay Transit Center

# Shoring Wall Deep Mixing Equipment





Transbay Transit Center

# Shoring Wall Beam Installation





Transbay Transit Center

## Buttress / Drilled Shafts

### Buttress / Drilled Shafts:

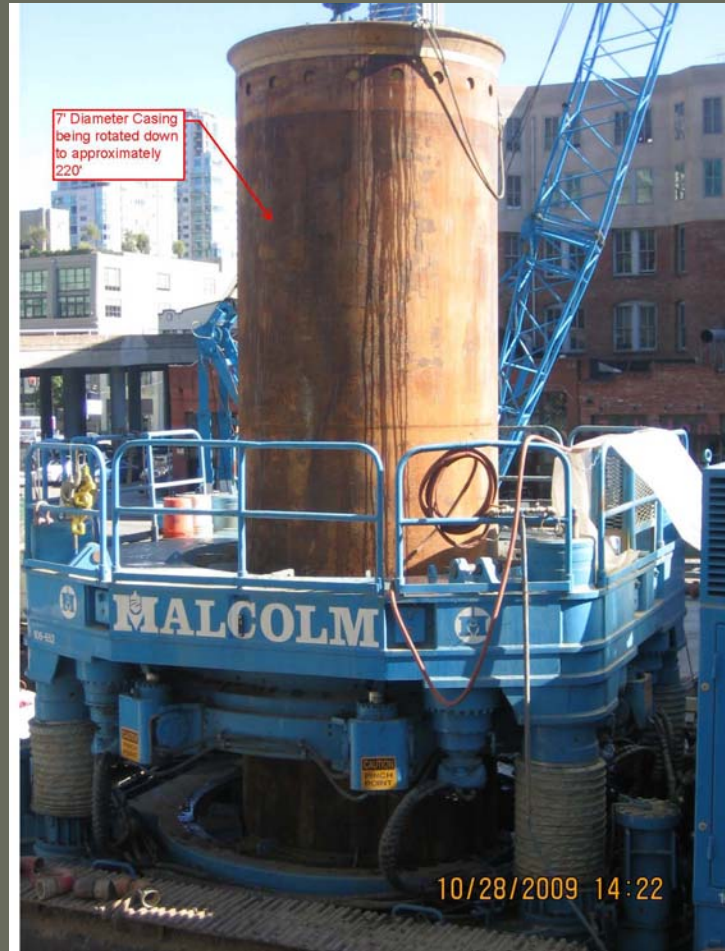
- 7 feet in diameter
- Approximately 220 feet deep
- Interlocking to provide soil improvement to the adjacent building
- Schedule
  - Start – 1st Quarter 2011
  - Finish – 3rd Quarter 2012





Transbay Transit Center

# Buttress / Drilled Shafts Installation





Transbay Transit Center

# Buttress / Drilled Shafts 7-Foot Diameter Casing





Transbay Transit Center

# Buttress / Drilled Shafts Soil Removal





Transbay Transit Center

# Excavation

## Excavation:

- 580,000 cubic yards
- Divided into Zones
- Schedule
  - Start – 3rd Quarter 2011
  - Finish – 3rd Quarter 2013