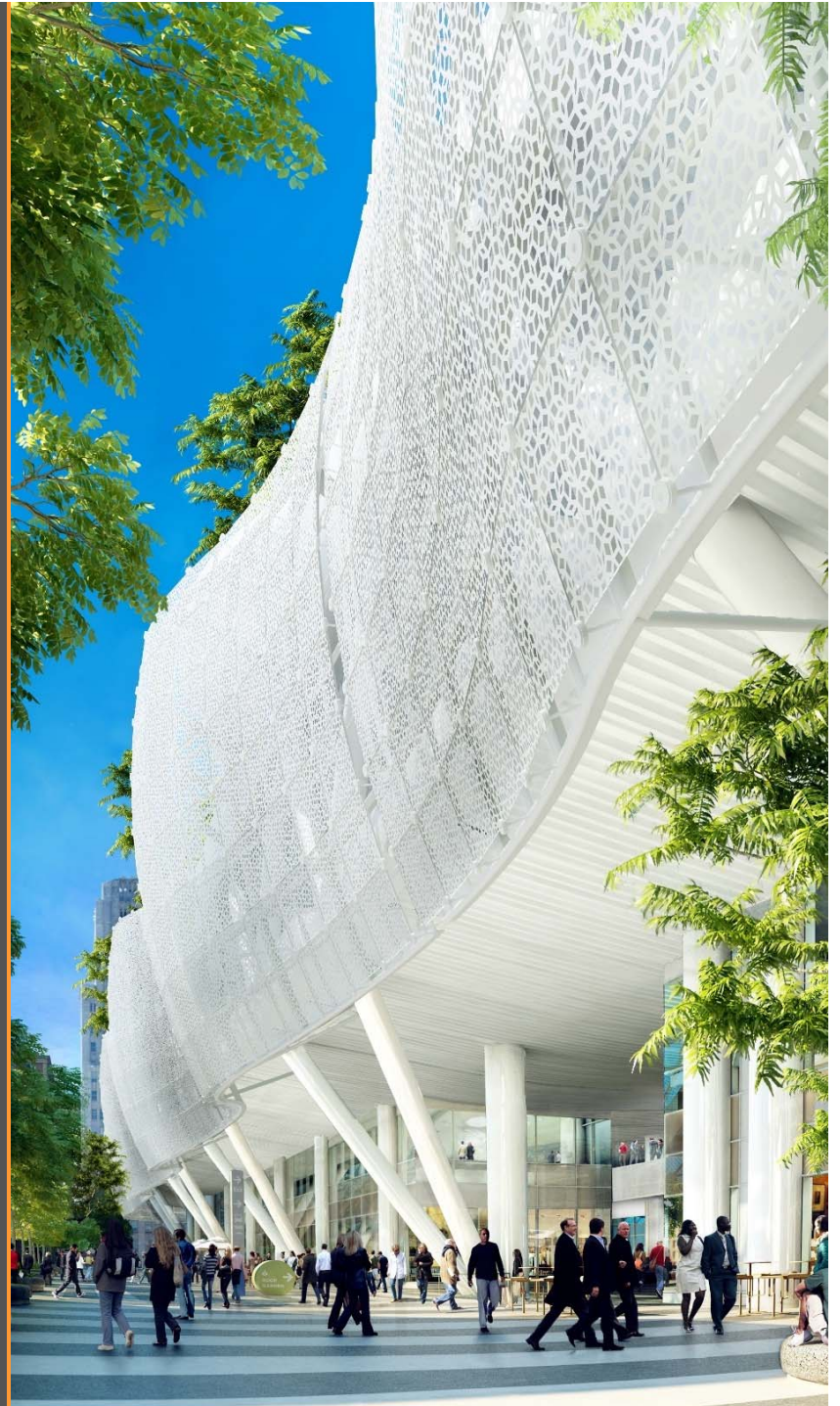


CRC Item No. 6 - November 17,
2017

Construction Update



Project Overview

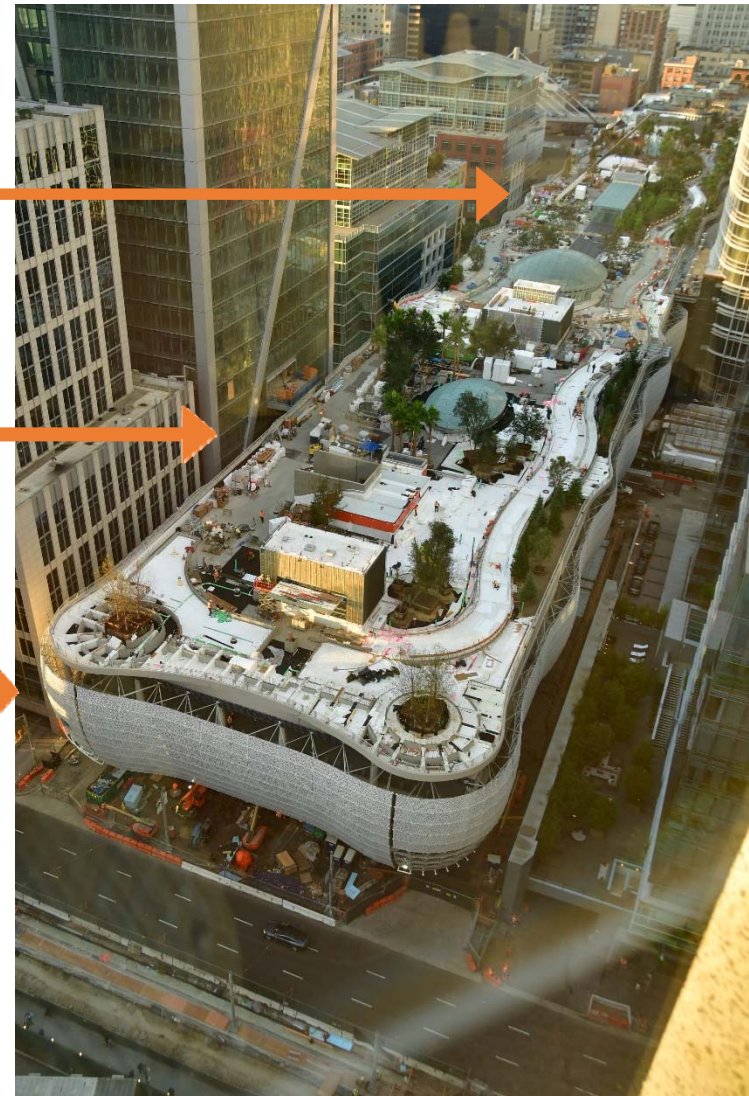
Western Zone Grid Line 1-10



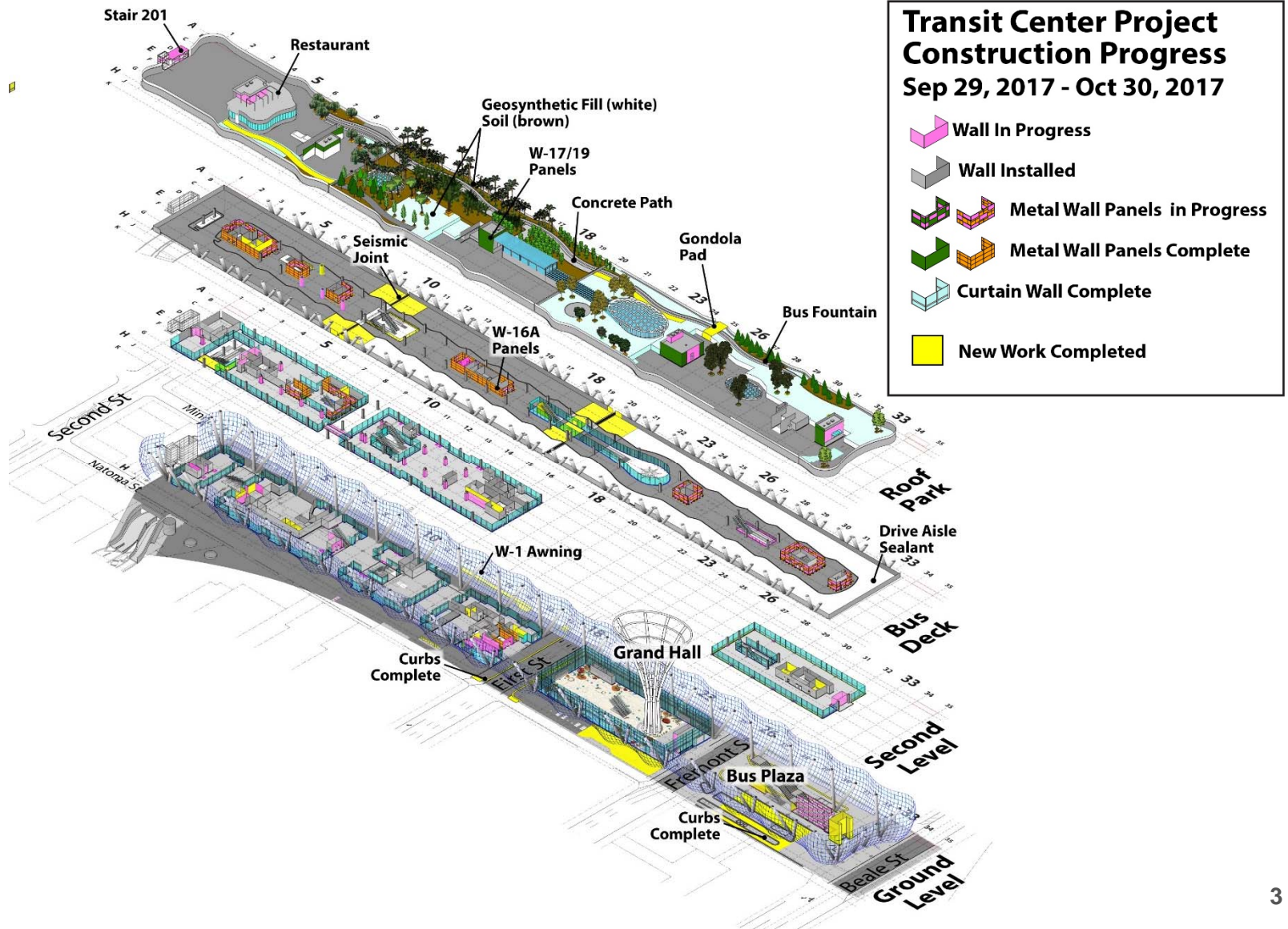
Central Zone Grid Line 10-20



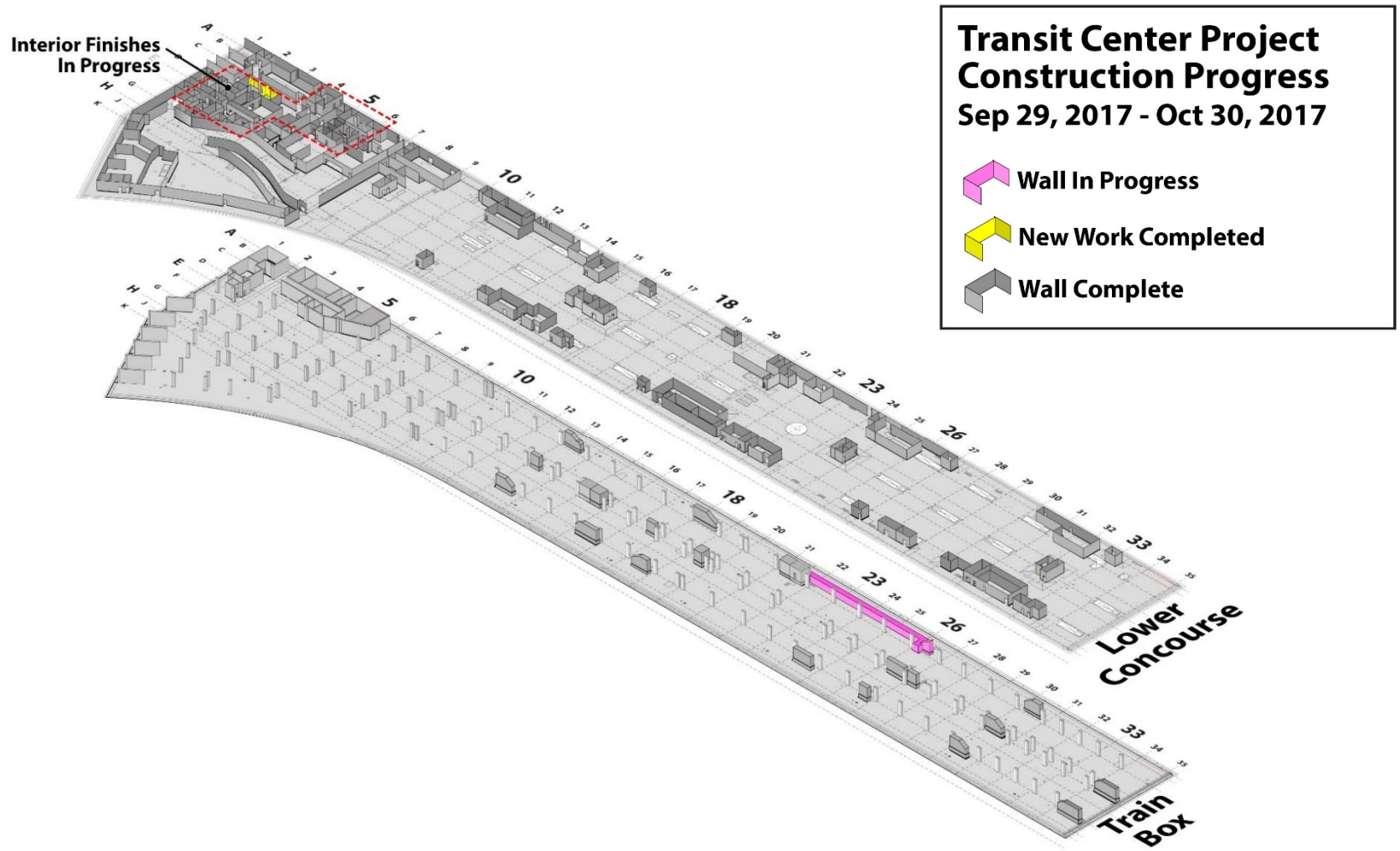
Eastern Zone Grid Line 20-35



Recent Activity



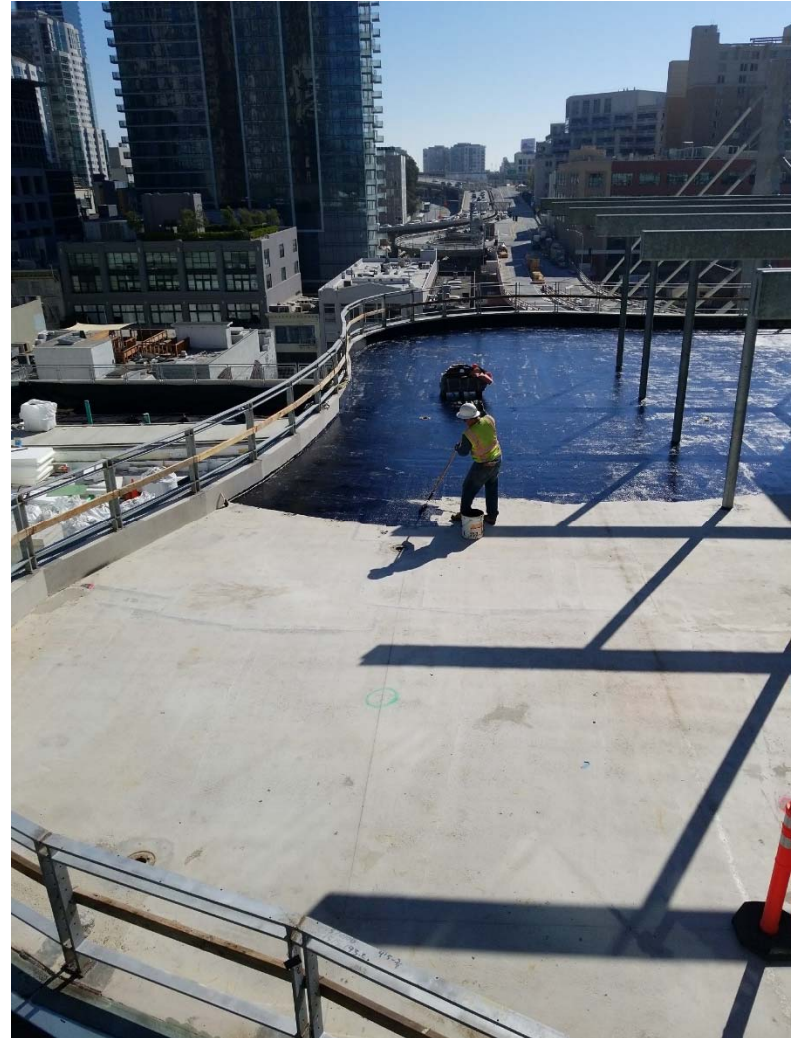
Recent Activity



Construction Activity

Transit Center - West (GL1-20)	Transit Center - East (GL20-35)
<ul style="list-style-type: none">-Rooftop landscaping underway.-Rooftop granite pathway pavers underway.-Bus Deck ceiling Mechanical, Electrical, Plumbing underway including hydrotesting.-Bus Deck ceiling drip panels underway.-Bus Deck column covers in progress.-Bus Deck drive aisle coating underway.-Elevators and Escalators underway.-Ground Level Sitework sidewalks and roadways under construction.- Electrical power cable distribution is now underway. Electrical conduits continue.-Main Distribution (MDF) and Intermediate Distribution Frame (IDF) Rooms underway.-Equipment rooms buildout in progress.-Walls gypsum board and painting and Metal wall panels underway.	<ul style="list-style-type: none">-Rooftop landscaping underway.-Rooftop granite pathway pavers underway.-Bus Deck ceiling Mechanical, Electrical, Plumbing underway including hydrotesting.-Bus Deck column covers in progress.-Bus Deck drive aisle coating is complete.-Elevator and Escalators underway.-Grand Hall -Terrazzo 70% complete.-MUNI Bus Plaza drive aisle and pedestrian islands under construction.-Electrical power cable distribution is now underway. Electrical conduits continue.-Main Distribution (MDF) and Intermediate Distribution Frame (IDF) Rooms underway.-Equipment rooms buildout in progress. --Walls gypsum board and painting and Metal wall panels underway.

Rooftop Park and Restaurant



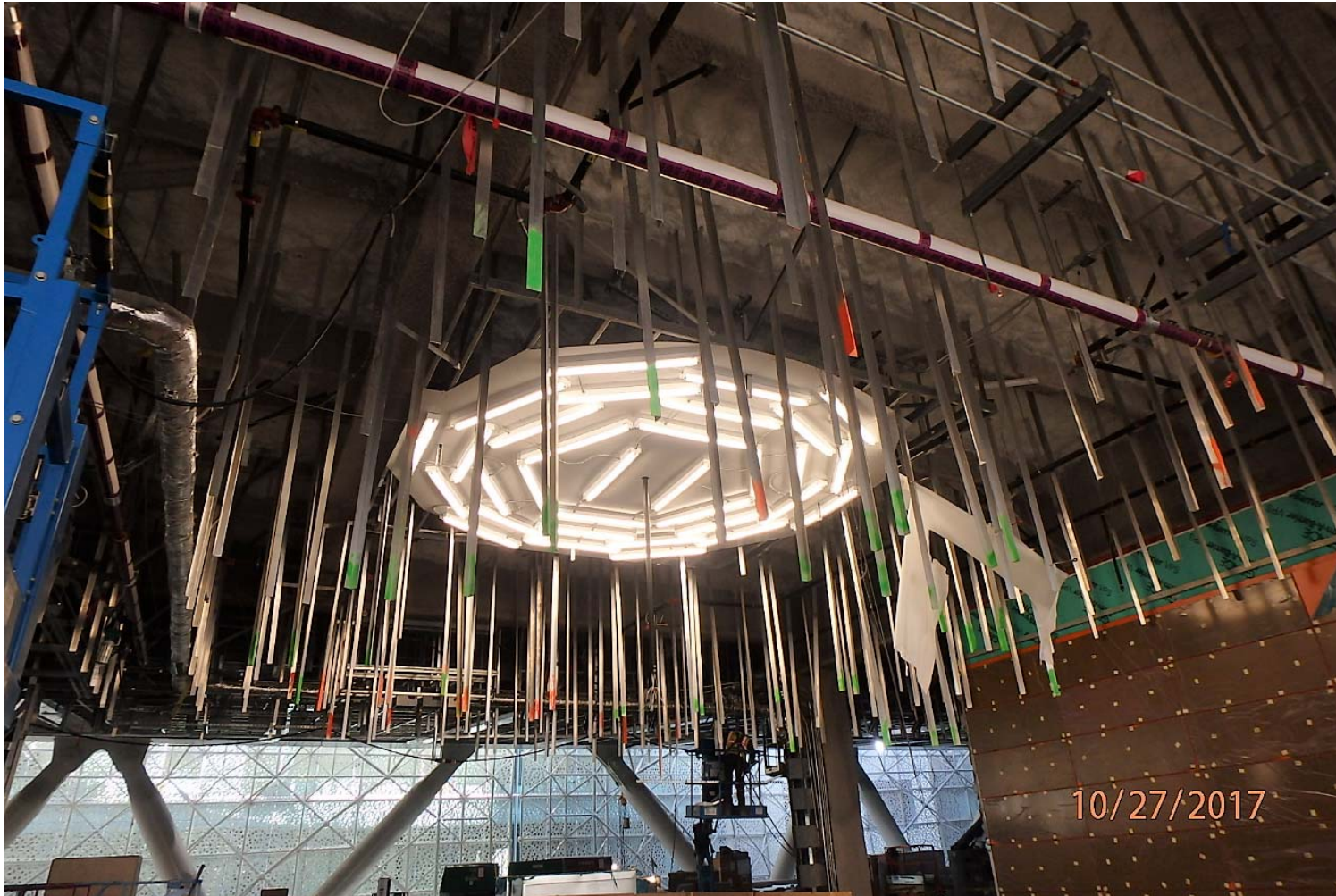
Bus Deck Level – Bus Drive Aisle



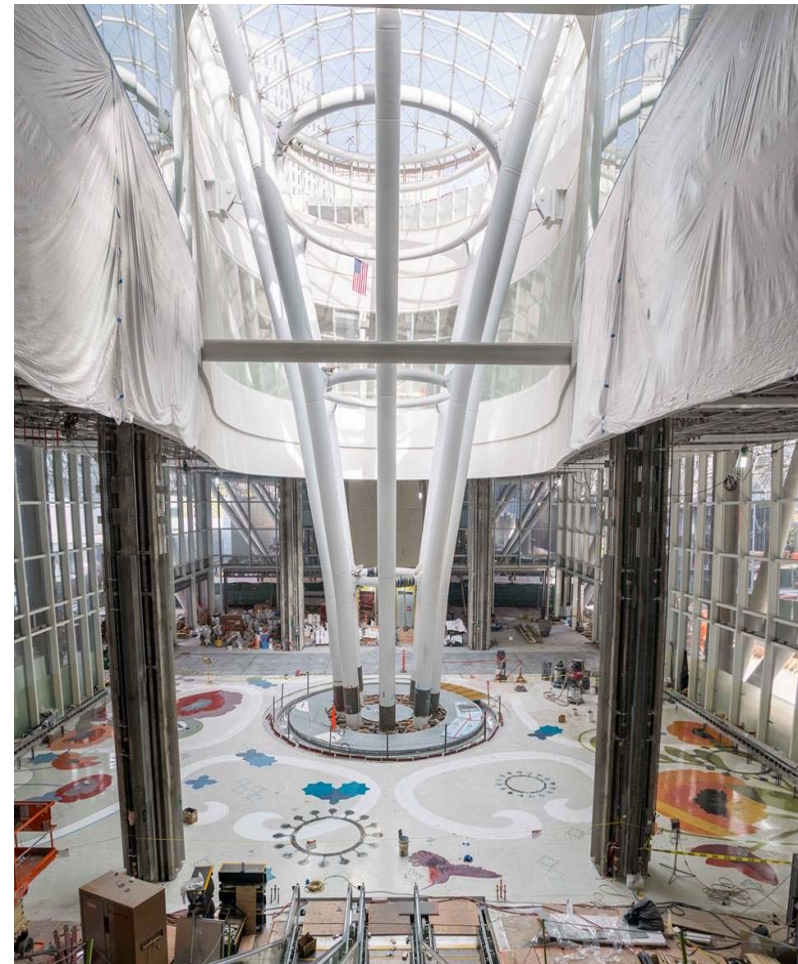
Bus Deck Level – Ceilings



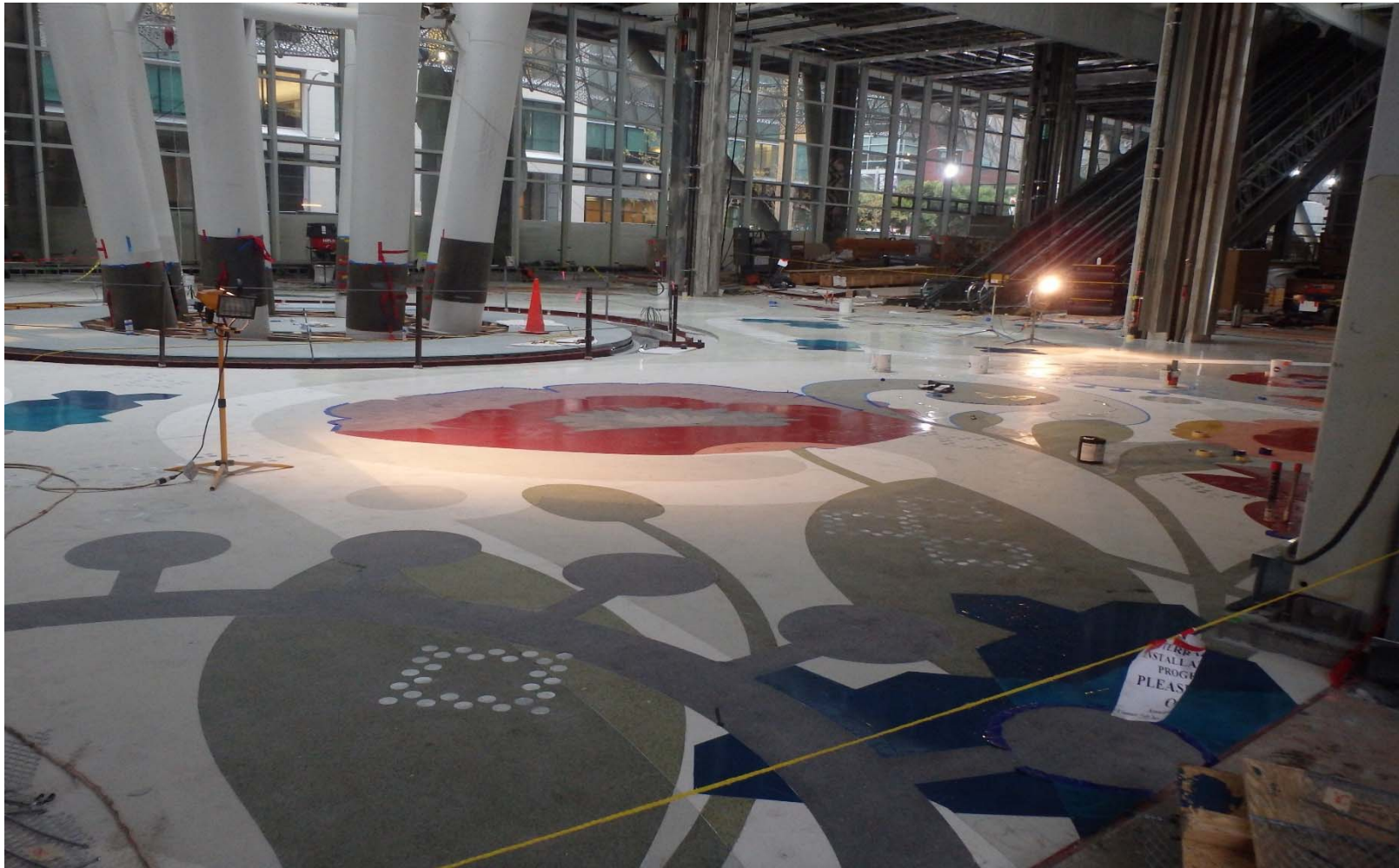
Bus Deck - Ceiling Fan and Backlighting



Grand Hall – Architect/Artist Vision versus Construction progress to date



Grand Hall –Terrazzo



Street Restoration- Minna Street

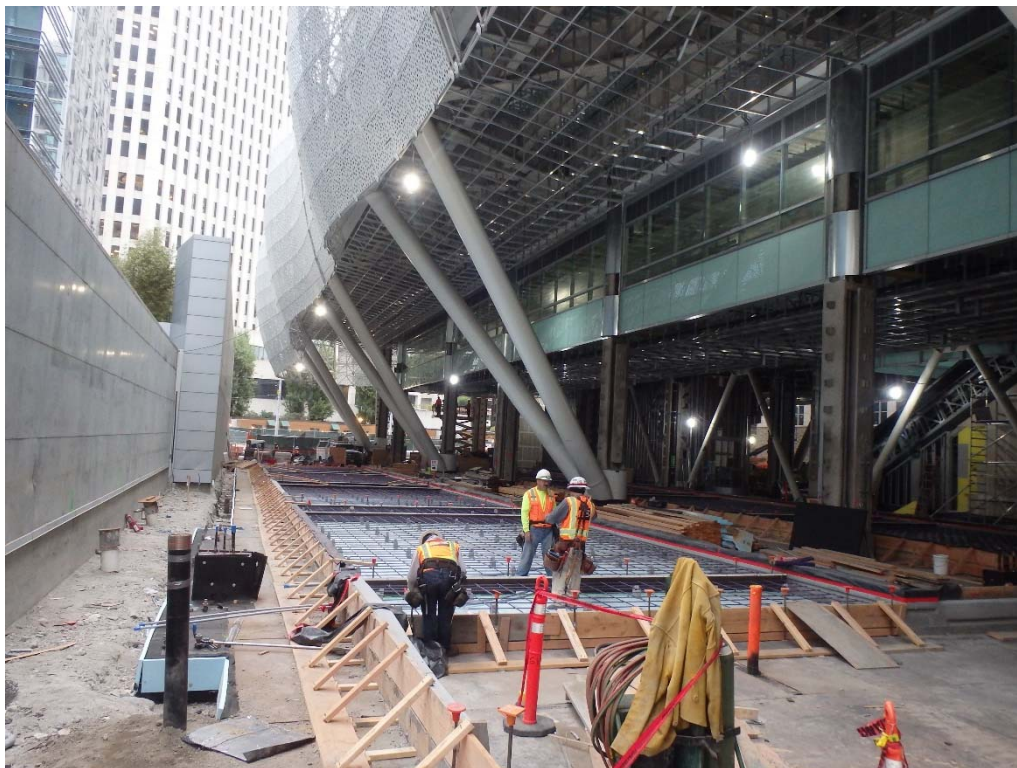


MUNI Bus Plaza –Drive Aisle

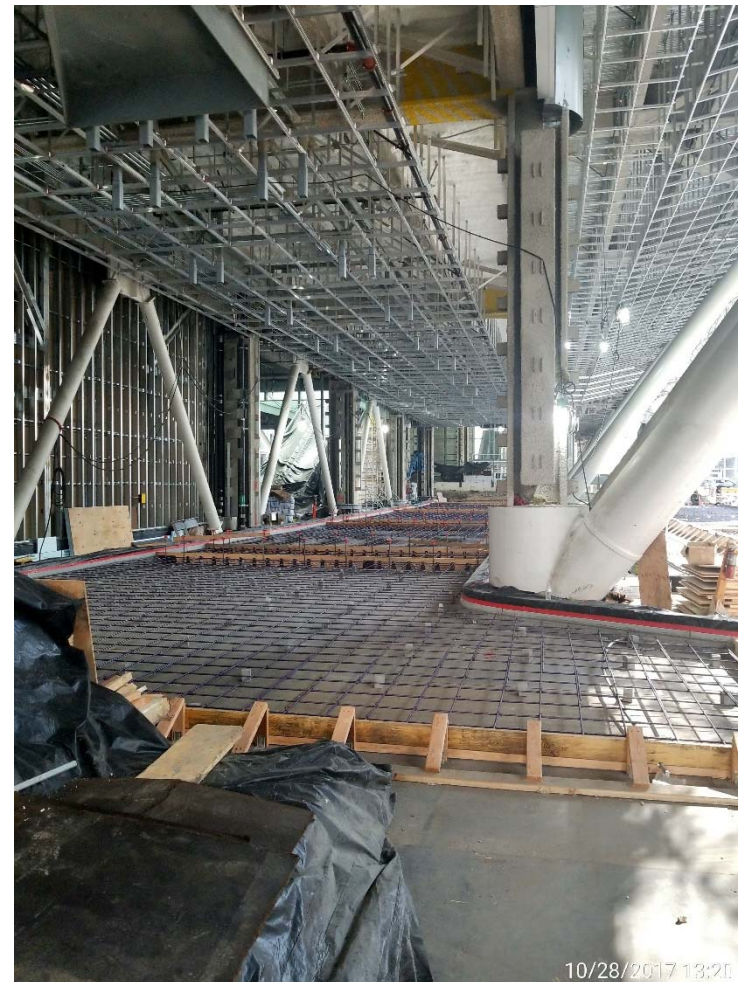


MUNI Bus Plaza – Buildout

Muni Bus Plaza Drive aisle north buildout
Level 2 Offices readied for Tenant Improvement



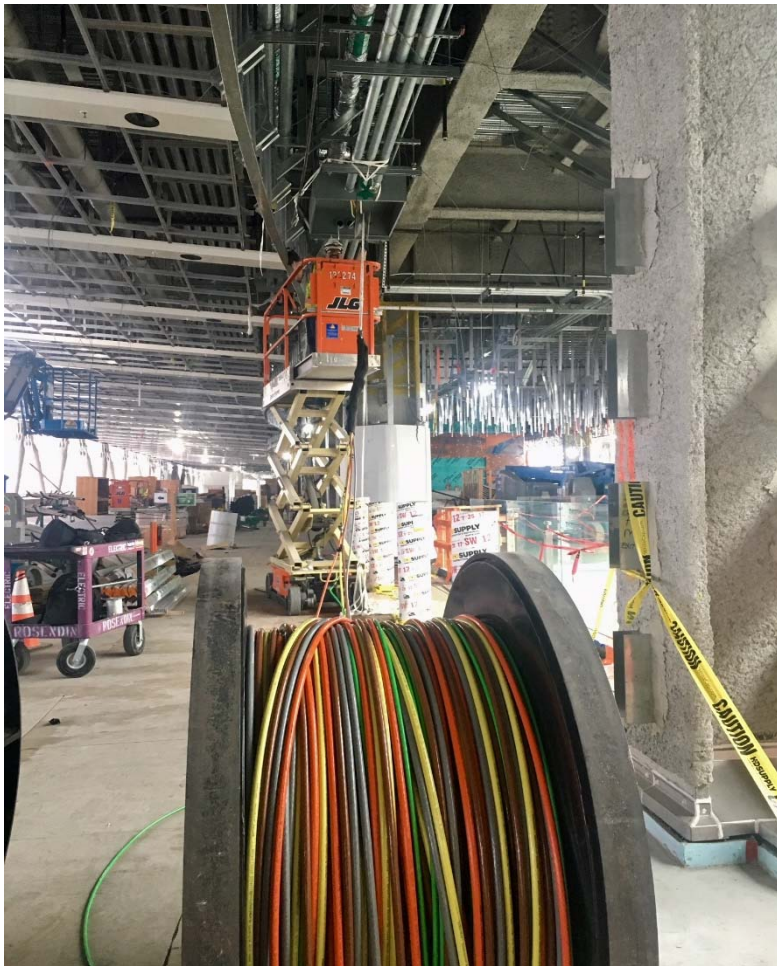
Muni Bus Plaza drive aisle
and ceiling buildout



Bollards and Equipment Deliveries



Electrical Construction is underway



Electrical Cable pulling Bus Deck

Switchgear Room B1561



Bus Storage Facility

Construction Underway

- Excavation/grading in progress.
- Abutments concrete placed.
- Underground Utilities in progress.
- Bus Link Ramp Viaduct ramp over Second Street formwork underway.
- Bus Link concrete box girder forms.
- Soil Management Plan in progress.

Challenges

- Concrete supply challenge continues and may impact schedule.
- Rebar supply challenge after the Sonoma/Napa wildfires.



Safety and Labor Statistics

Recordable & Lost Time Incidents:

Recordable Incidents this period October 2017:	1	Lost Time Incidents this period October 2017:	0
Total Recordable Incidents –Year 2017:	9	Total Lost Time Incidents - Year 2017:	3

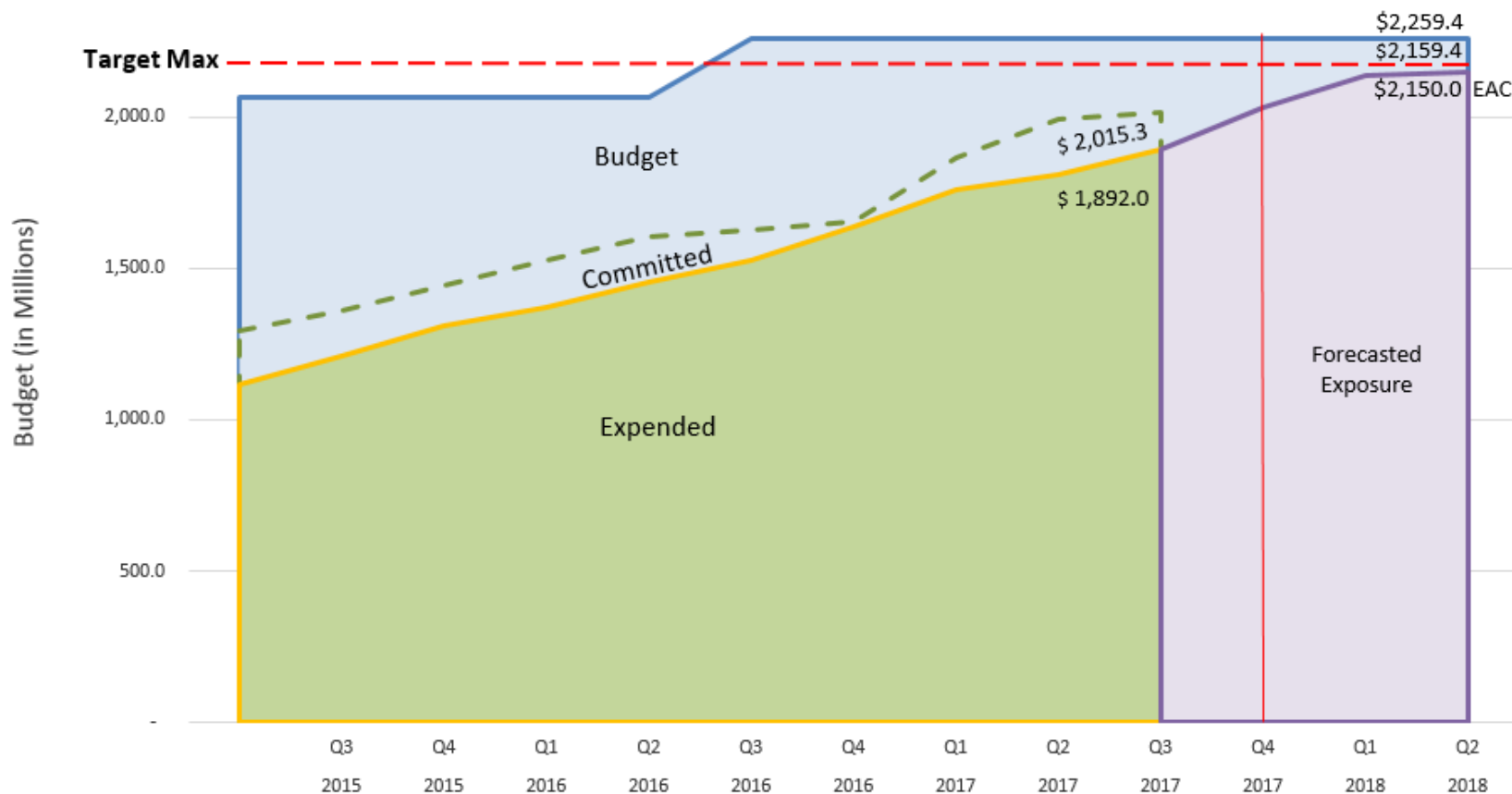
WOJV Average Annual Recordable Incident Rate 2011 Through 2015	3.04	WOJV Average Annual Lost Time Incident Rate 2011 Through 2015:	0.38
Nat'l/ State Annual Average Recordable Incident Rate 2011 Through 2015:	2.76	Nat'l/ State Annual Average Lost Time Incident Rate 2011 Through 2015:	1.36

Craft Hours:

Total Transit Center Craft Hours 2011 - YTD 2017 :	Total Craft Hours <u>October 2017:</u>	Total Transit Center Craft Hours YTD 2017 :
4,208,682	174,916	1,362,767

Budget

Phase 1 Transbay Transit Center Program Data thru: September 17



Phase 1 Budget & Commitments (in millions)

	<u>Budget</u>	<u>Committed</u>	<u>Expended</u>	<u>Balance</u> (Budget less Committed Costs)
Construction Costs	\$1,479.9	\$1,437.3	\$1,323.6	\$42.6
Program-wide Costs (Soft Costs)	\$597.1	\$578.0	\$568.4	\$19.1
Contingencies & Reserves	\$182.4	\$0.0	\$0.0	\$182.4
TOTAL	\$2,259.4	\$2,015.3	\$1,892.0	\$244.1

Contingency Cost

Contingency Tracking (\$millions)

	Construction Contingency	CM/GC Contingency	Program Reserve	Total Contingency & Reserve
Baseline Budget Amounts	\$61.8	\$32.5	\$116.9	\$211.3
Contingency Usage Through Sept 2017	(\$28.9)	(\$4.0)	\$4.7	(\$28.3)
Remaining Baseline Budget Amounts (Sept 2017)	\$32.9	\$28.5	\$121.6	\$183.0
Total Draws/Adds October 2017	(\$2.7)	(\$0.0)	(\$3.6)	(\$6.3)
Remaining Balances	\$30.2	\$28.5	\$118.0	\$176.7

Uses of Contingency this period

301 Mission Wall agreement, Zone 4 Bus Shelters, Add'l Sidewalks/Curb/Gutter at Bus Ramp.
 Program Reserve for legal expenses, and financing expenses related to City and Bridge financing.

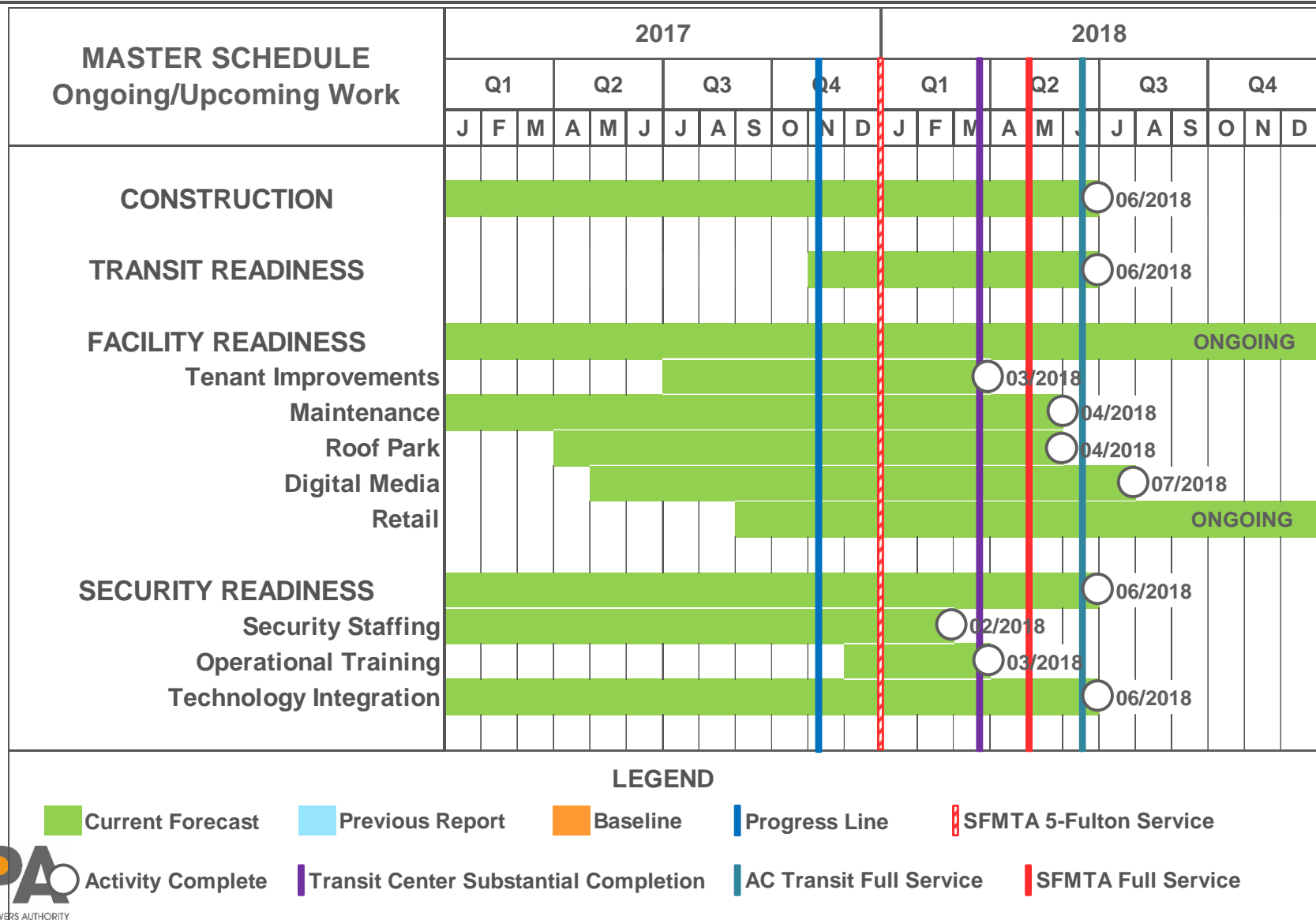
Forecasted Contingency Use

CM/GC: \$0.6

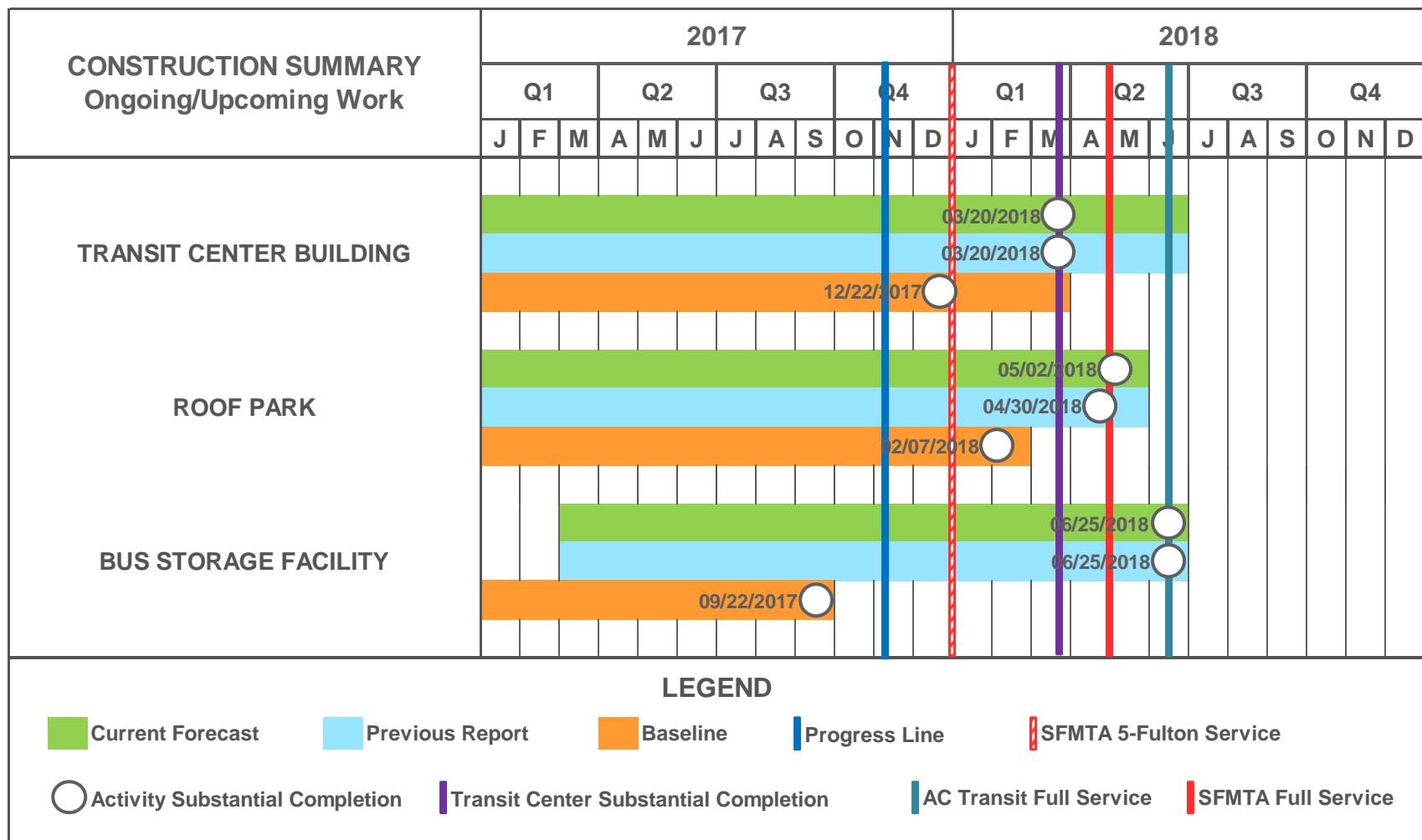
Construction: \$6.0

Program Reserve: 0.0

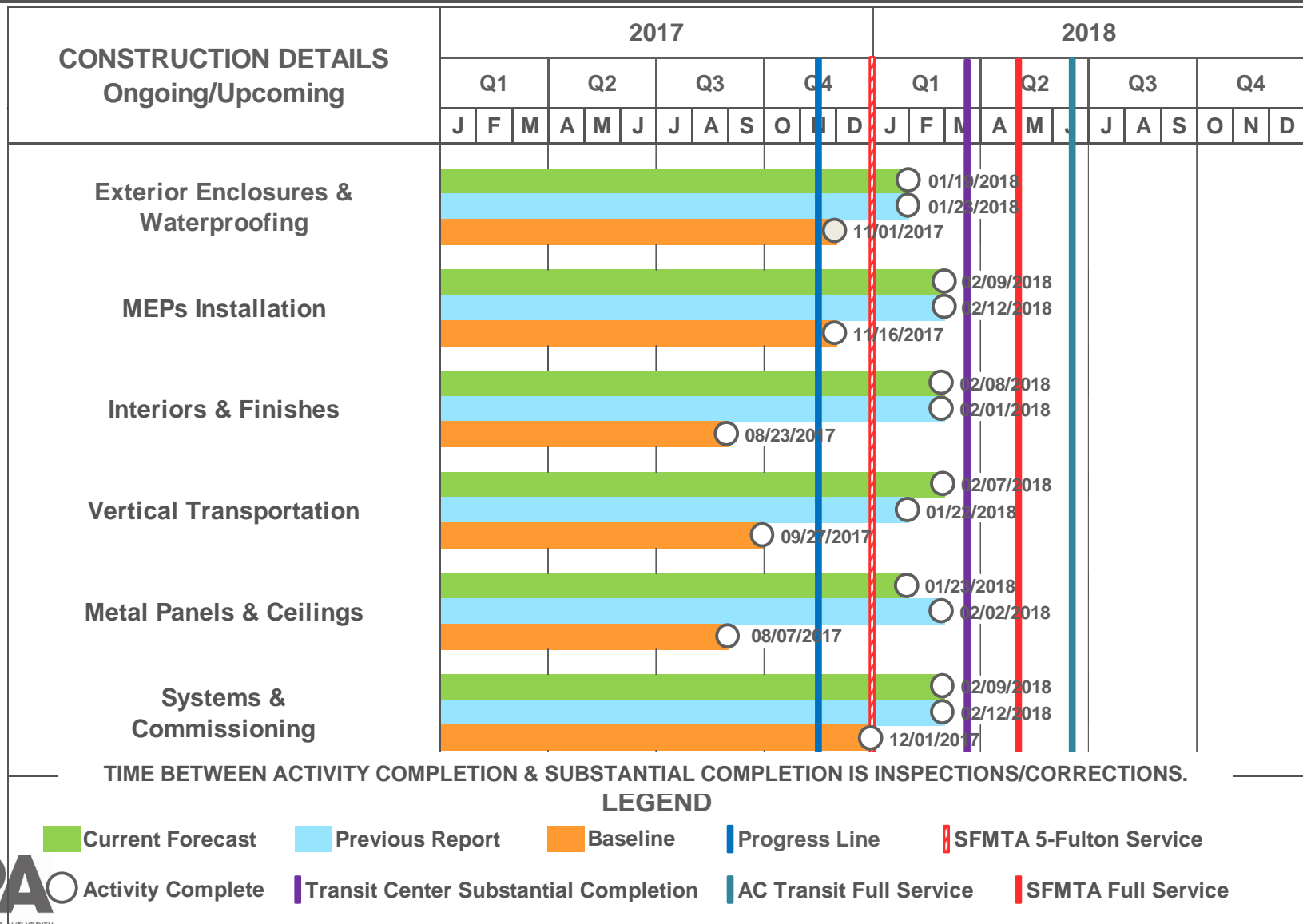
Schedule



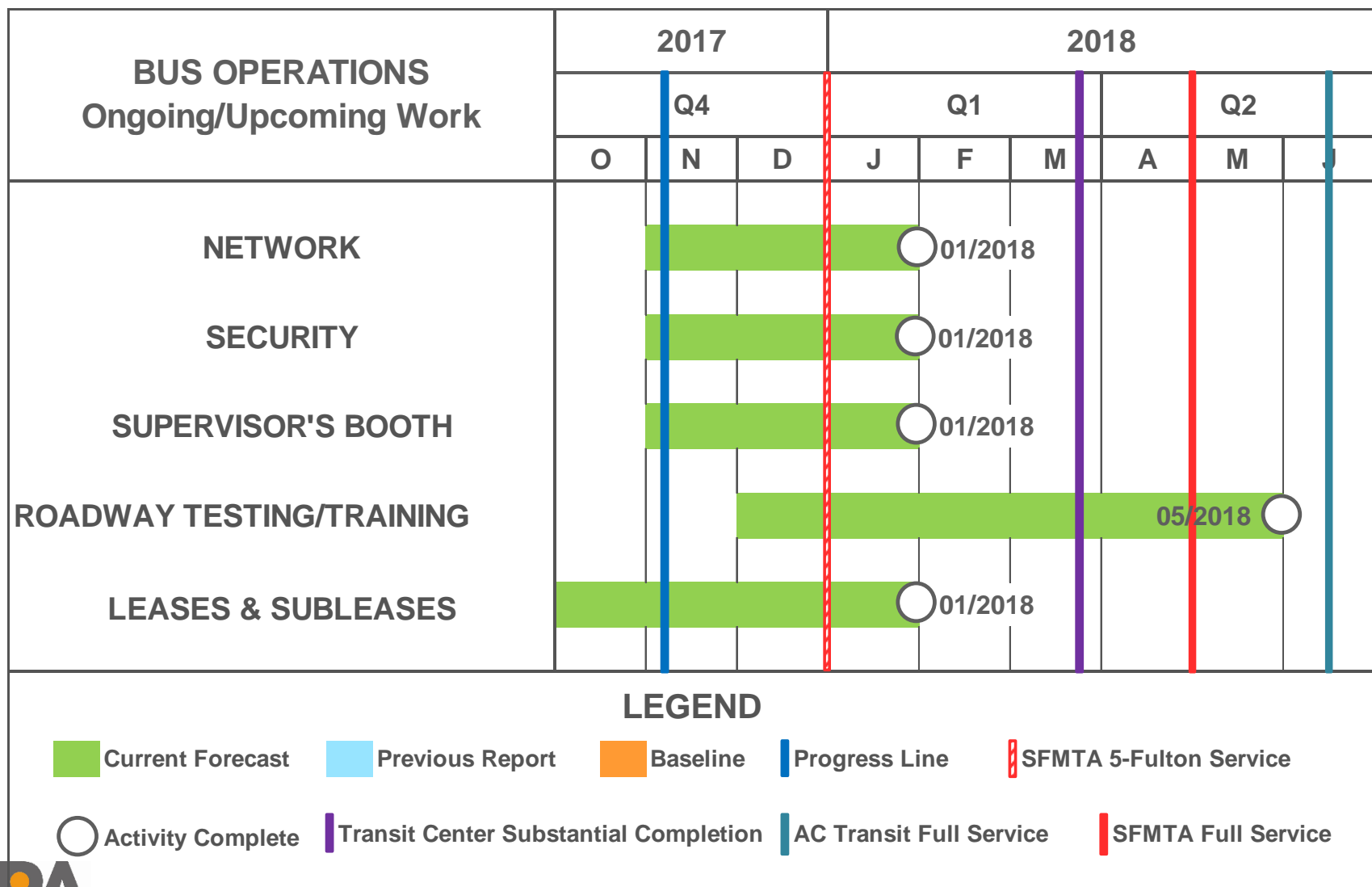
Schedule



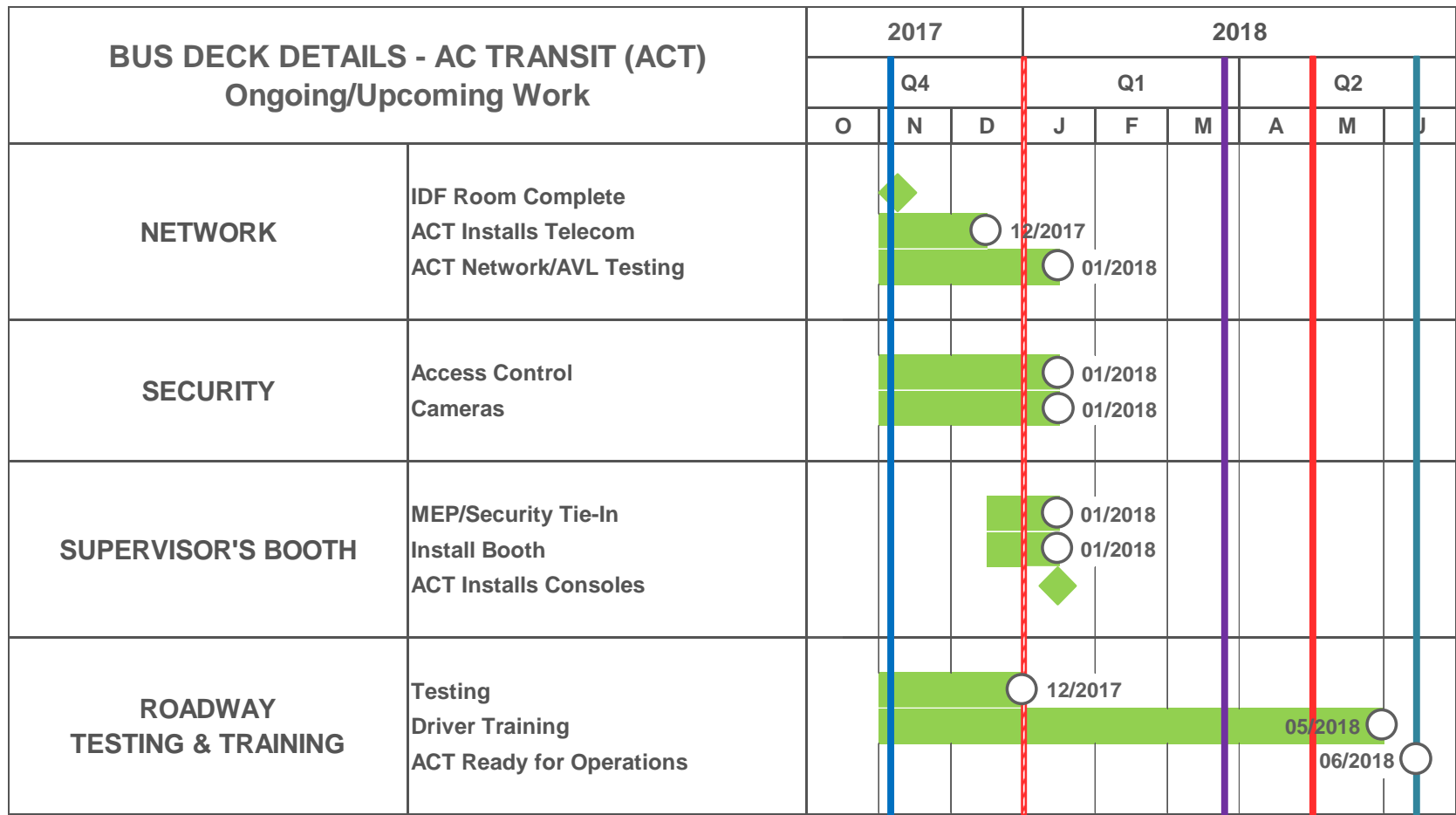
Schedule



Schedule



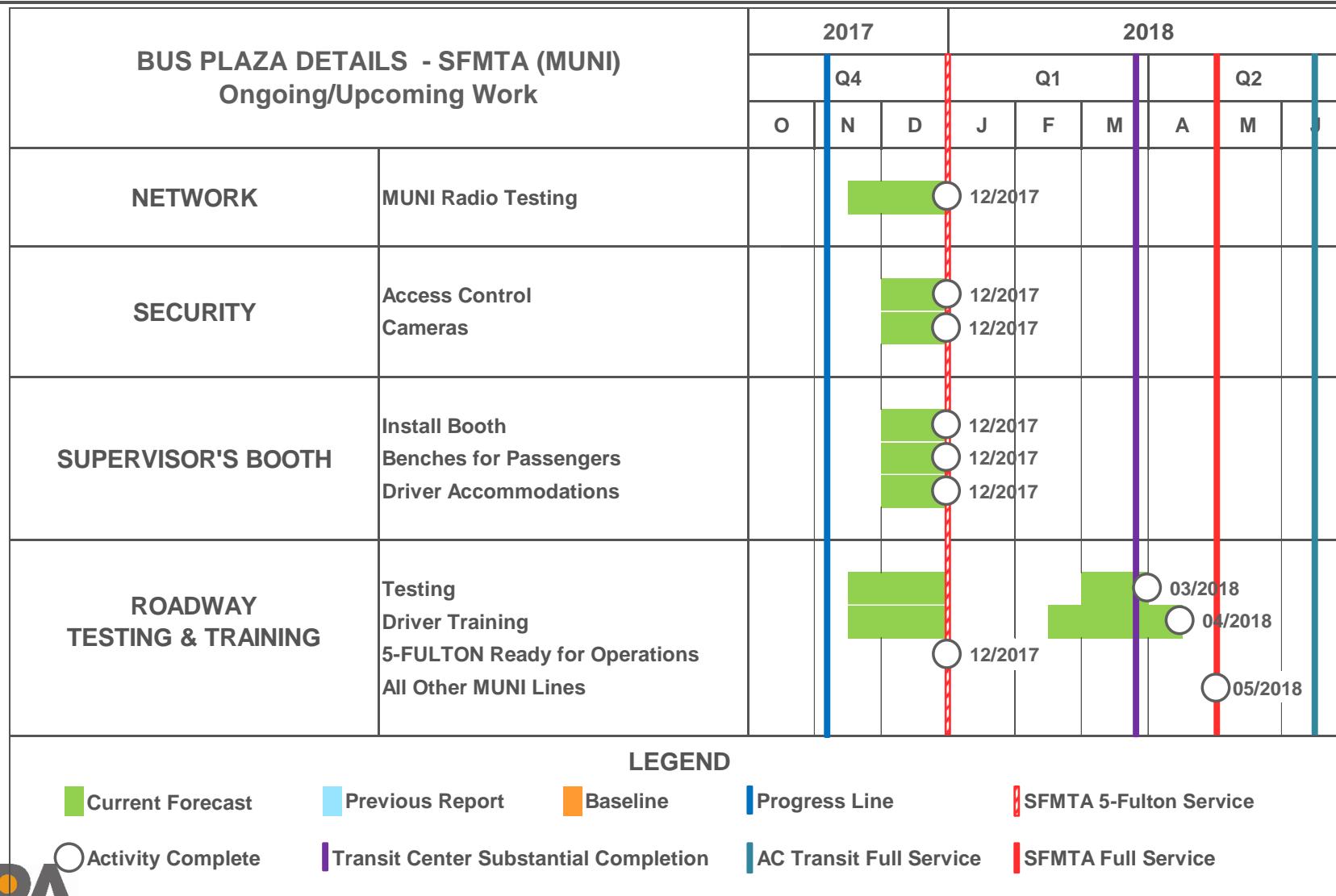
Schedule












LEGEND

- Current Forecast
- Previous Report
- Baseline
- Progress Line
- SFMTA 5-Fulton Service
- Activity Complete
- Transit Center Substantial Completion
- AC Transit Full Service
- SFMTA Full Service

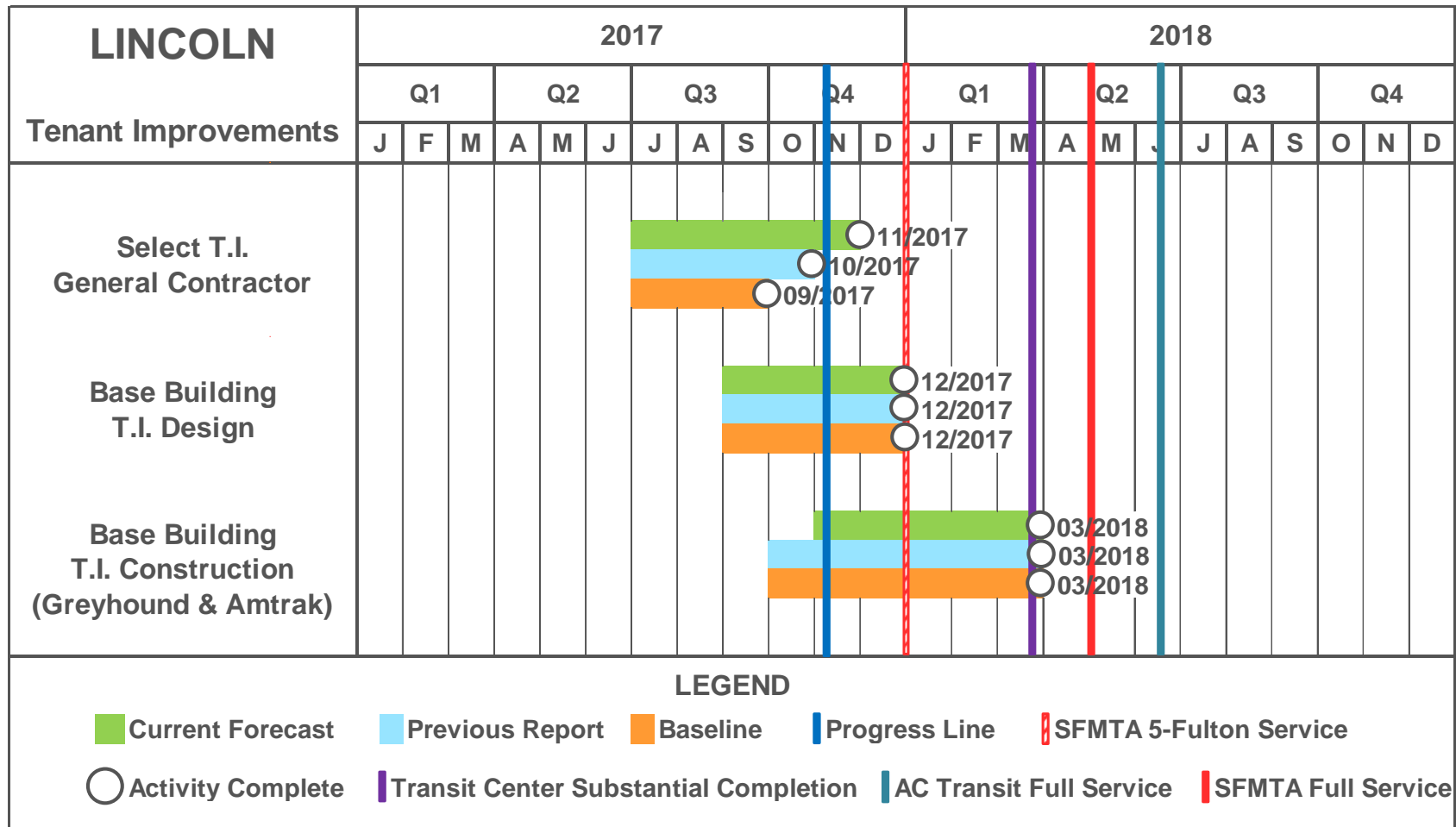
Schedule



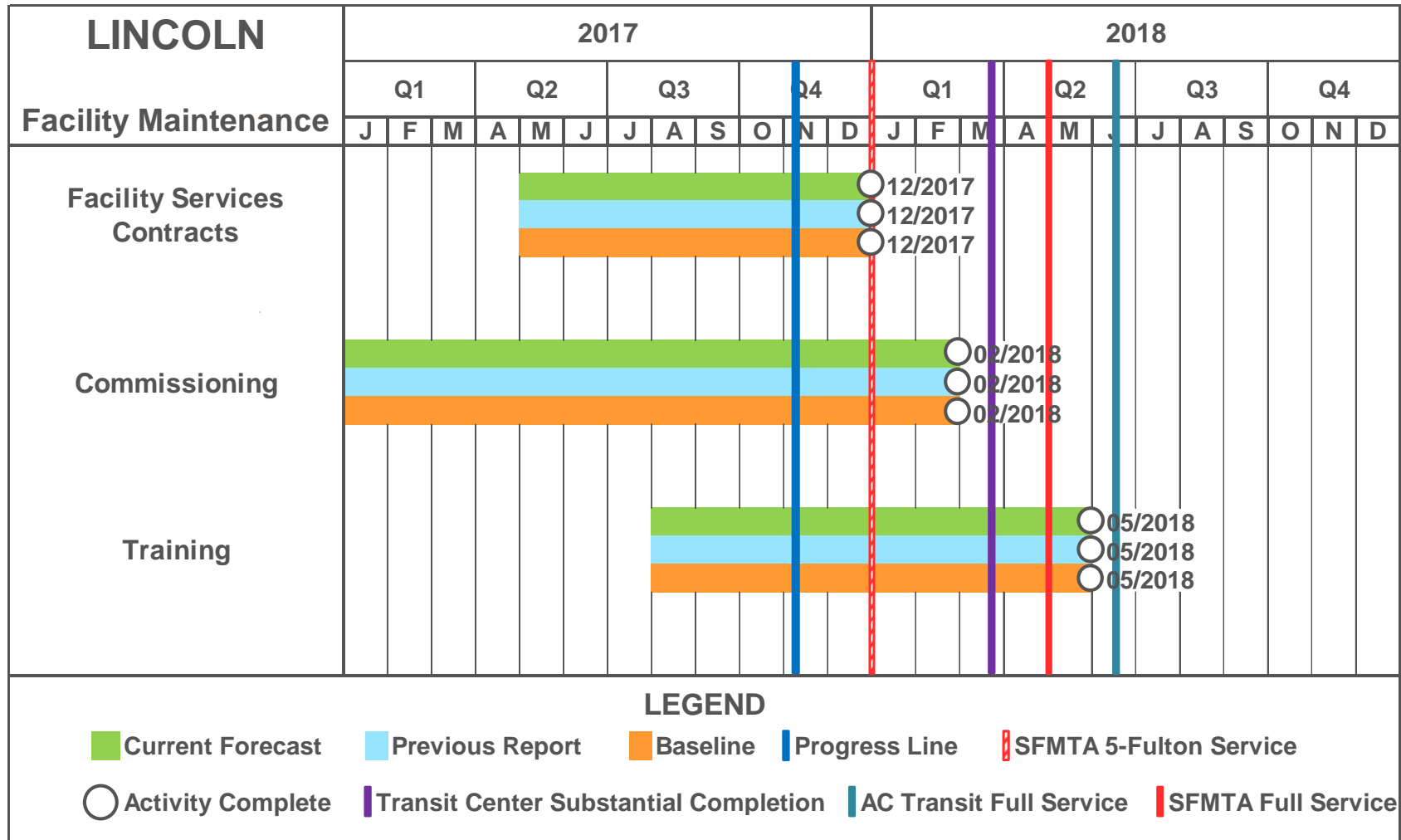
LEGEND

-  Current Forecast
-  Previous Report
-  Baseline
-  Progress Line
-  SFMTA 5-Fulton Service
-  Activity Complete
-  Transit Center Substantial Completion
-  AC Transit Full Service
-  SFMTA Full Service

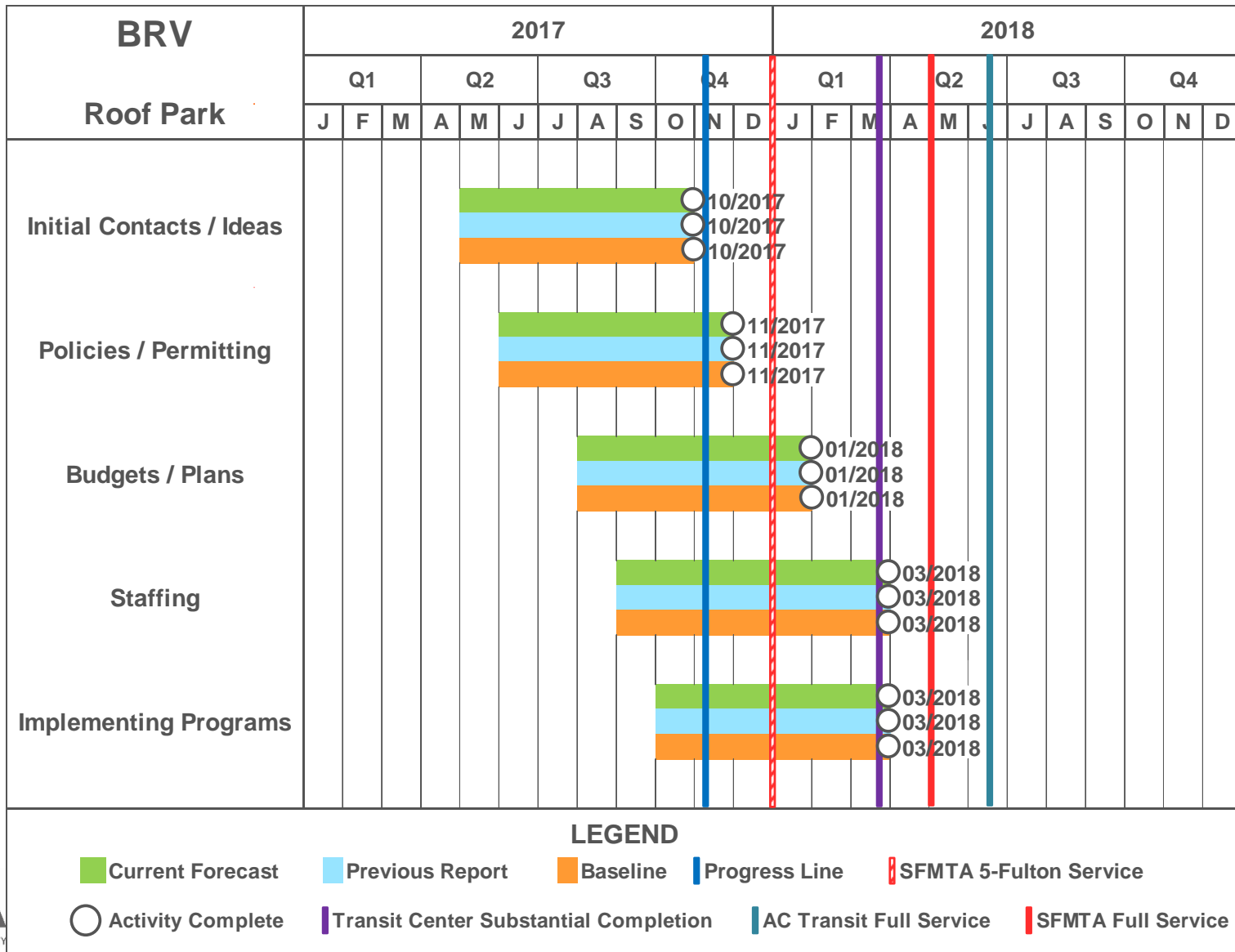
Facility Readiness – Lincoln Tenant Improvements



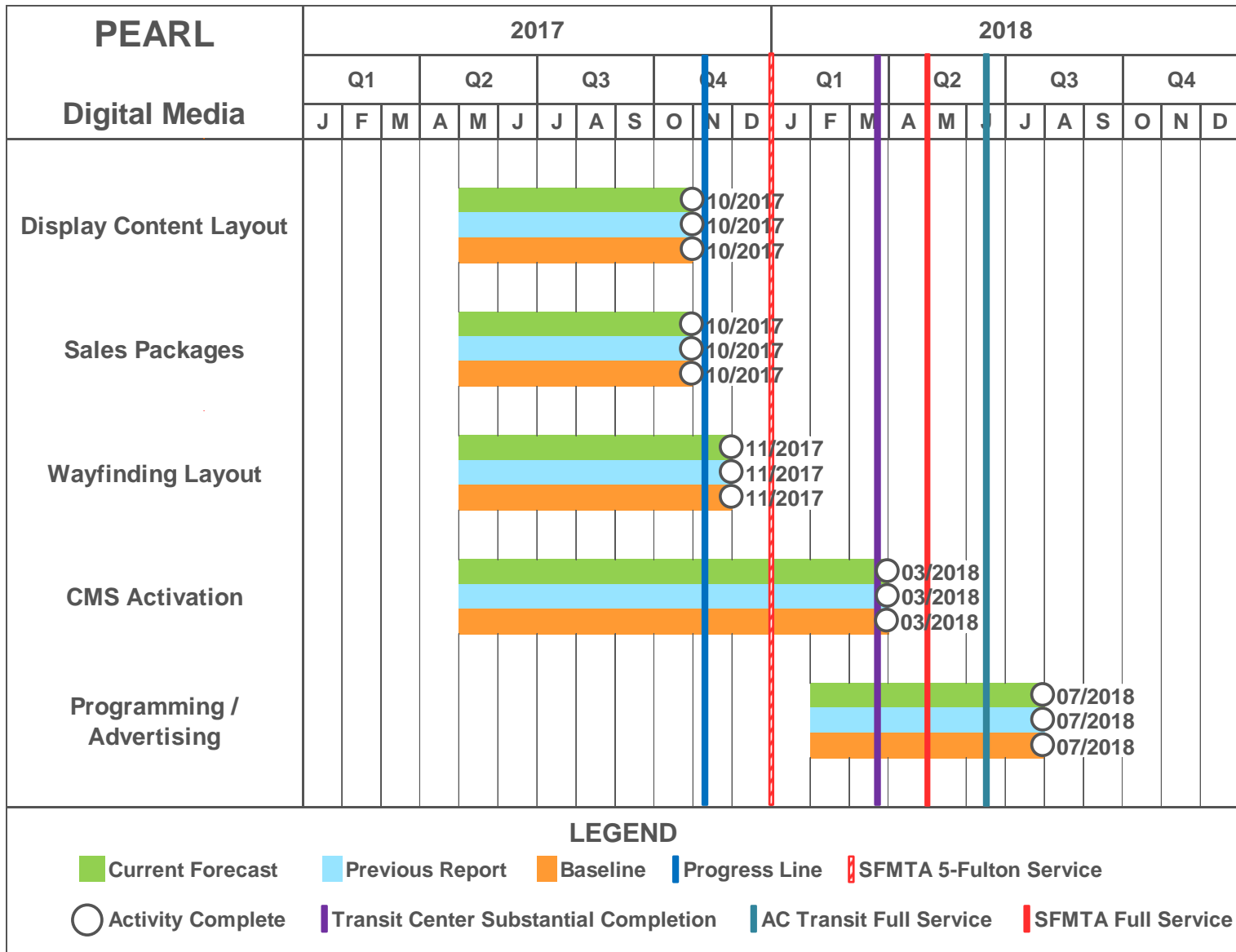
Facility Readiness – Lincoln Facility Maintenance



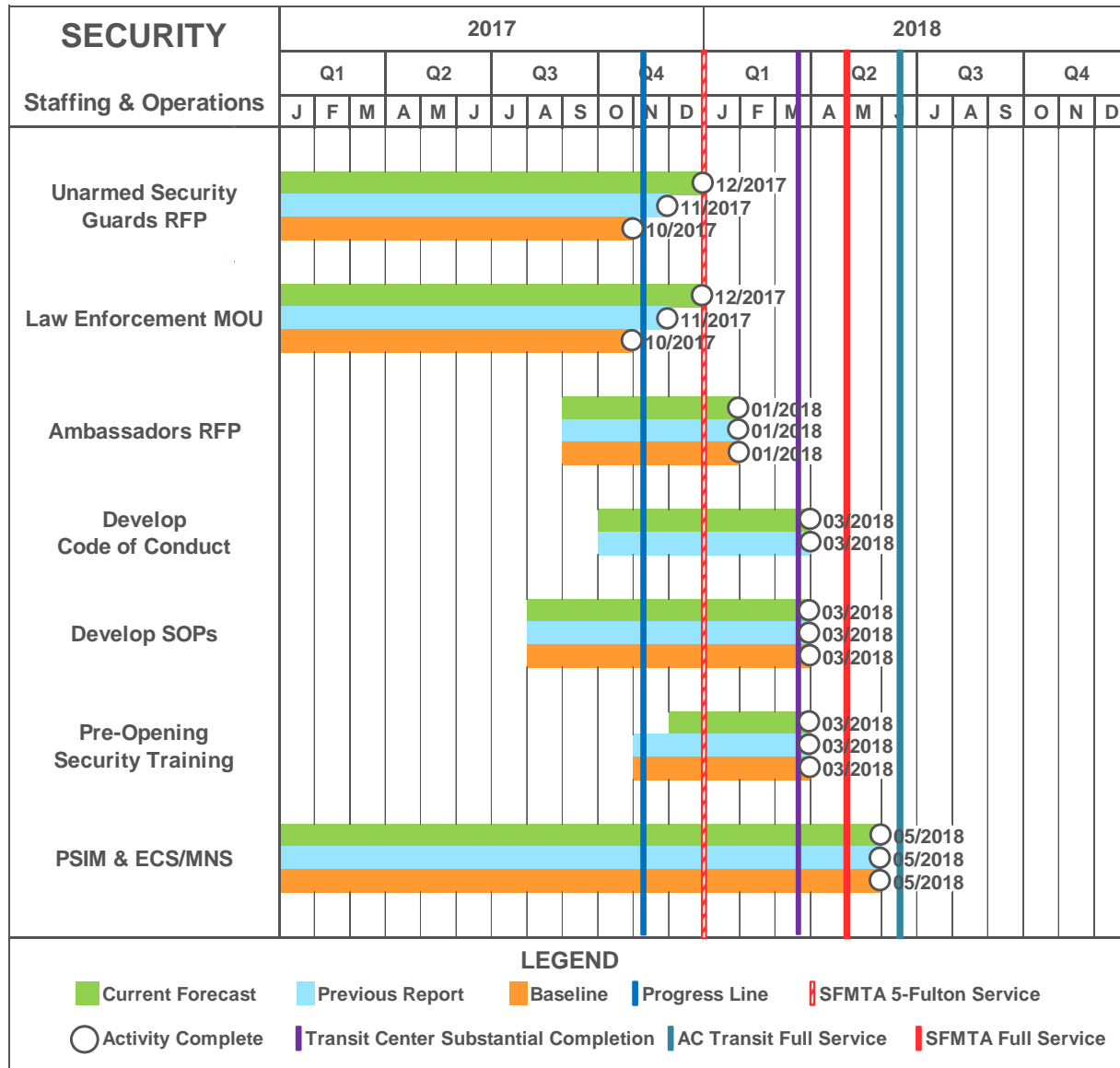
Facility Readiness – BRV Roof Park



Facility Readiness – Pearl Digital Media



Facility Readiness - Security



Risks

Schedule

Schedule Milestones generally held in past month. Schedule remains about 12 weeks beyond contractual Substantial Completion.

Challenged Activities include:

1. Electrical Subcontract Production Rates in both Normal Voltage and Low Voltage Distribution is single largest obstacle to completion.
2. Fabrication and Installation of Column Covers as well as E2 Pylons at Roof Park level have slipped in the previous reporting period and are of greater concern, but continuously trying to identify workarounds to support the schedule.
3. Activity focus on Muni Bus Plaza better ensuring Public Transit Operations beginning December 2017.
4. Concentration of work at Grand Hall and Bus Deck continues to support Bus Deck operations by March 2018.

Risks

Schedule

WOJV Mitigation Strategy Update:

1. Targeted Shift Work and Overtime for Critical Trades.
2. Increased Supplementation of Electrical Work.
3. Scope Shift Between Subcontractors for Site Concrete.
4. Possible Future Supplementation for Column Covers.
5. Possible Future Supplementation for Interior Finishes.

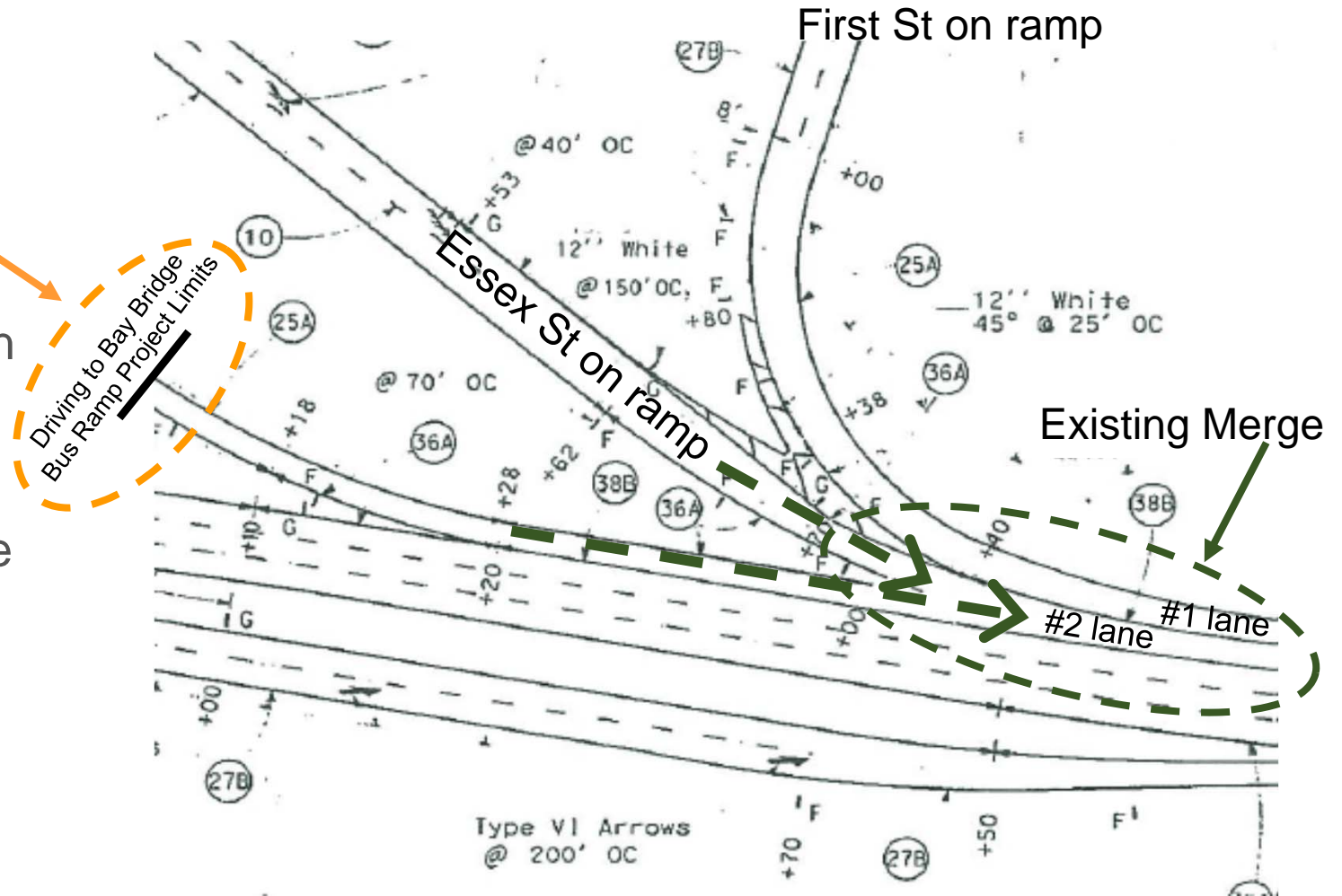
Bus On-Ramp

- Bus Ramp & Essex Street on ramps merge today the same as prior to 2010 (see 2009 photo below)



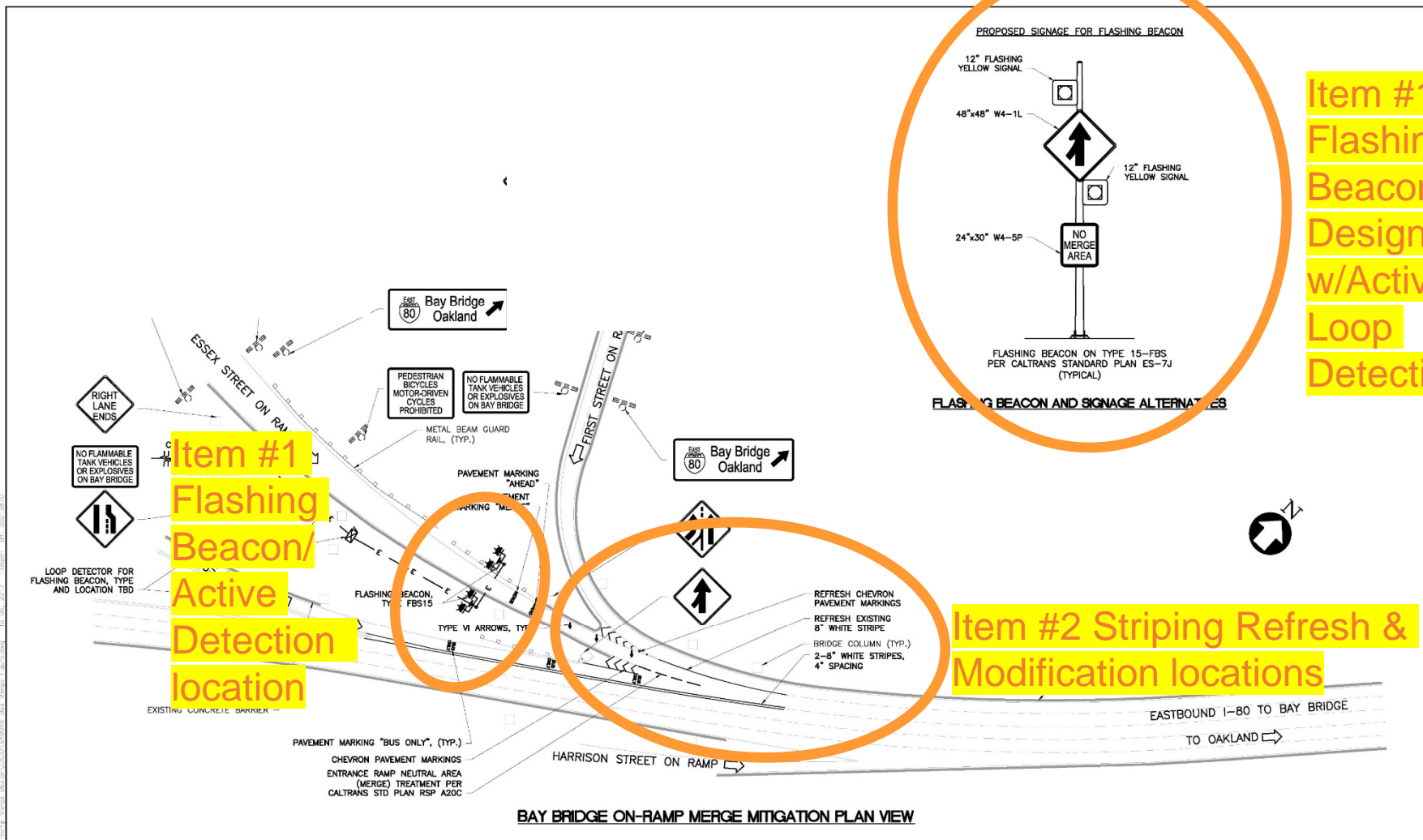
Bus On Ramp/ TJPA Limits

The TJPA's Bus Ramp project limits were based on design review and did not effect the pre-existing merge with Essex.



West Approach project conditions 2009 and today

Bus On-Ramp/AC Transit Proposal



Item #1
Flashing
Beacon
Design
w/Active
Loop
Detection

Item #2 Striping Refresh & Modification locations

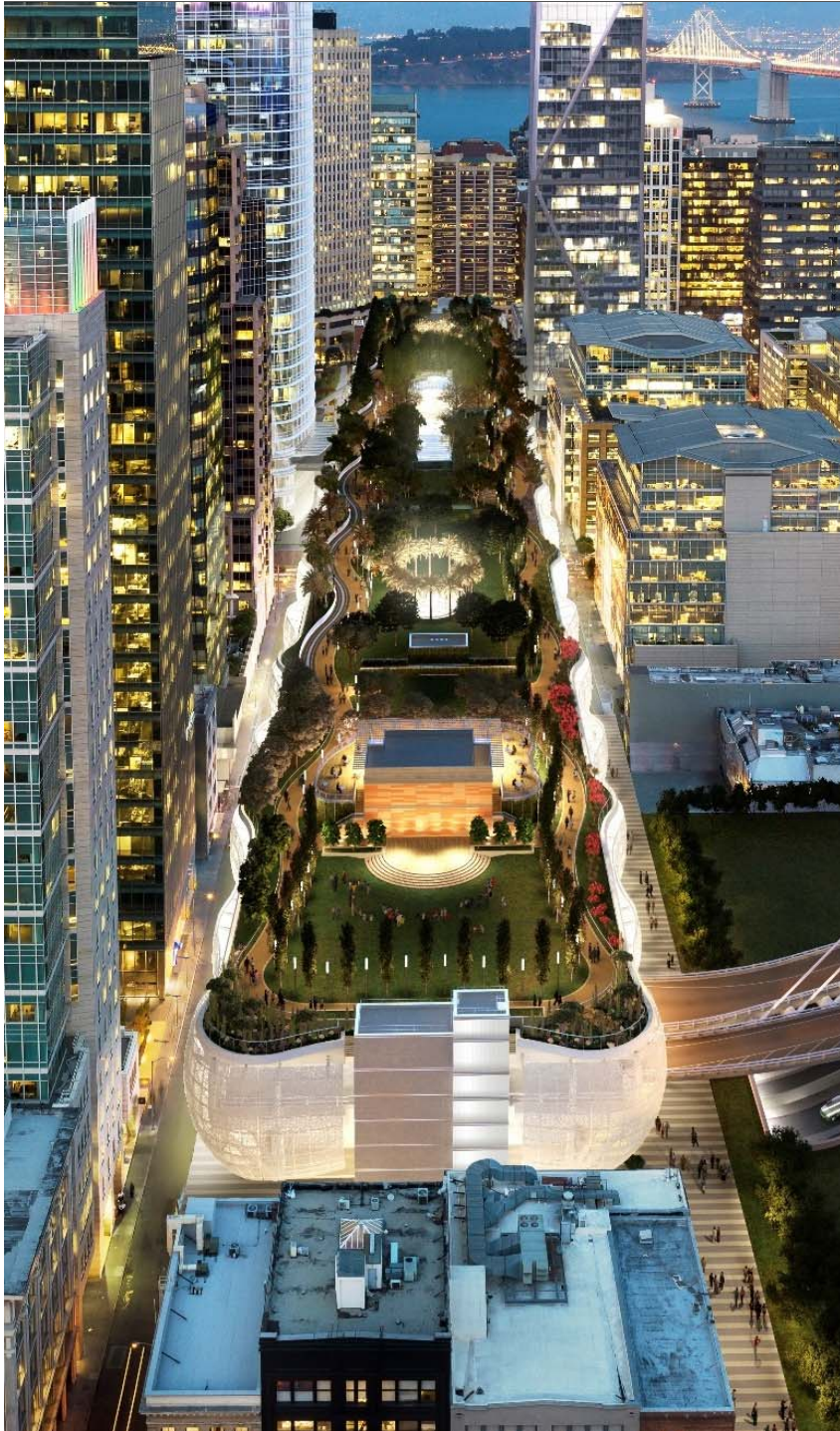
Item #1
Flashing
Beacon/
Active
Detection
location

C:\Users\jledy\OneDrive - Alameda - Contra Costa Transit District\Documents\Bus\Signal\Bay Bridge On-Ramp Merge Mitigation.dwg
 10/26/2017 10:08:00 AM
 10/26/2017 10:08:00 AM
 10/26/2017 10:08:00 AM

DESIGNER: S. LEDY DRAWN: E. GUNDERSEN CHECKED: S. LEDY APPROVED: S. LEDY DATE: 2017/10/06			ALAMEDA - CONTRA COSTA TRANSIT DISTRICT East Bay Bus Rapid Transit		TRANSBAY TRANSIT CENTER BAY BRIDGE ON-RAMP MERGE MITIGATION SIGNING, STRIPING AND SIGNALIZATION PLAN		CADD FILENAME: 649046 Bus Merge Figure.dwg SIZE: D NTS SCALE CONTRACT NO. XXXXX REV. 1 DRAWING NO. 1 SHEET NO.	
--	--	--	---	--	---	--	--	--

Bus On-Ramp/Action Items

- AC Transit to provide TJPA with a Caltrans approved design of a flashing beacon w/active loop detection along with existing striping refresh and modifications.
- Caltrans has committed to assist in expediting the permit process.
- TJPA is committed to implementing the changes in the field as soon as possible.



Questions?

TJPA
TRANSBAY JOINT POWERS AUTHORITY

201 Mission Street, Suite 2100 San Francisco, CA 94105 • 415.597.4620 • www.tjpa.org