



# Salvageable Items and Archaeology

13 July 2010

## Transbay Transit Center

**TJPA**





Transbay Transit Center

# Salvageable Items



Transbay Transit Center

## Memorandum of Agreement

**Memorandum of Agreement** addressing historic and archaeological properties was executed in June 2004 by:

- Federal Transit Administration
- California State Historic Preservation Officer
- Transbay Joint Powers Authority
- City and County of San Francisco
- Peninsula Corridor Joint Powers Board
- California Department of Transportation



Transbay Transit Center

## Salvageable Items

- MOA requires interpretive exhibit in new Transit Center
- MOA requires salvageable items be offered to other interested agencies



Transbay Transit Center

# Historic Elements to be Salvaged

## Western Railway Museum

Suisun, California

## California State Railroad Museum

Sacramento, California





Transbay Transit Center

# Historic Elements to be Salvaged

Transbay Joint Powers Authority

San Francisco, California





Transbay Transit Center

# Historic Elements to be Salvaged

Transbay Joint Powers Authority

San Francisco, California



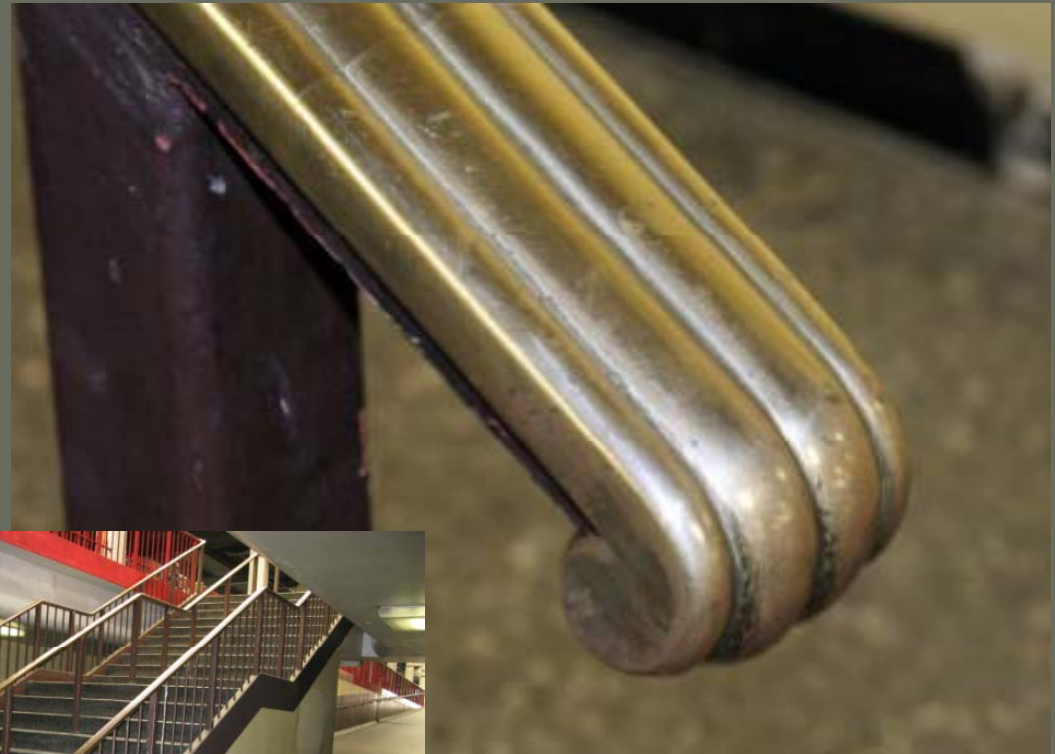
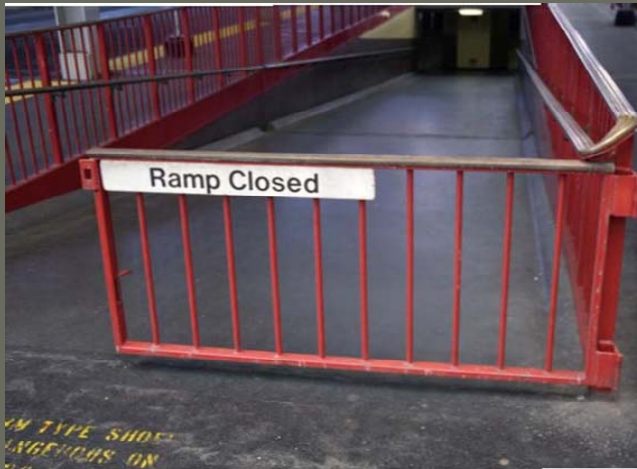


Transbay Transit Center

# Historic Elements to be Salvaged

Transbay Joint Powers Authority

San Francisco, California







Transbay Transit Center

# Historic Elements to be Salvaged

Transbay Joint Powers Authority

San Francisco, California





Transbay Transit Center

# Historic Elements to be Salvaged

Transbay Joint Powers Authority

San Francisco, California





Transbay Transit Center

# Historic Elements to be Salvaged

Transbay Joint Powers Authority

San Francisco, California





Transbay Transit Center

# Historic Elements to be Salvaged

California Department of Transportation

Oakland, California





Transbay Transit Center

# Historic Elements to be Salvaged

California Department of Transportation

Oakland, California





Transbay Transit Center

# Archaeology



Transbay Transit Center

# Existing Conditions





Transbay Transit Center

# Shaft and Shoring Wall Archaeological Treatment

Trenching to 12 feet for historic and upper prehistoric archaeological resources

Boring to 75 feet for lower prehistoric archaeological resources



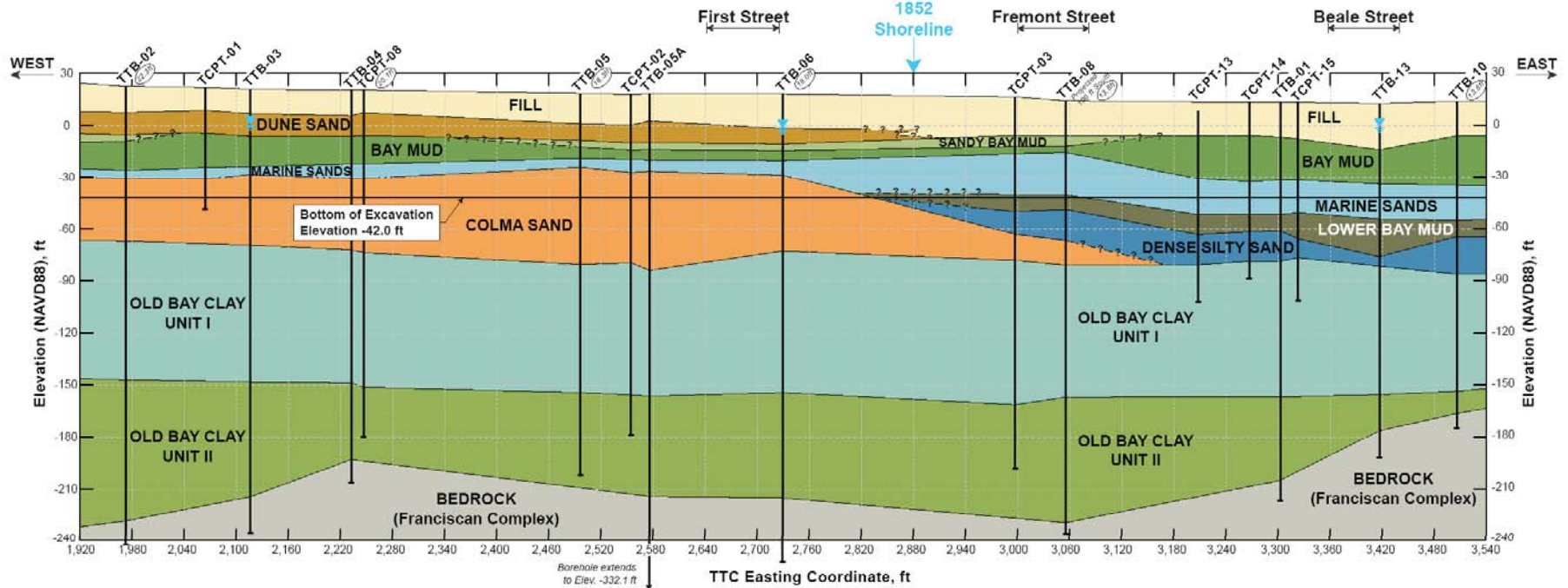




Transbay Transit Center

# History of Land Formation

## Transbay Transit Center Subsurface Section Along Minna Street





Transbay Transit Center

# Prehistoric spear points

ca. 1,200 years old





Transbay Transit Center

# Spanish Period

## Mission de Asis de San Francisco (Dolores)

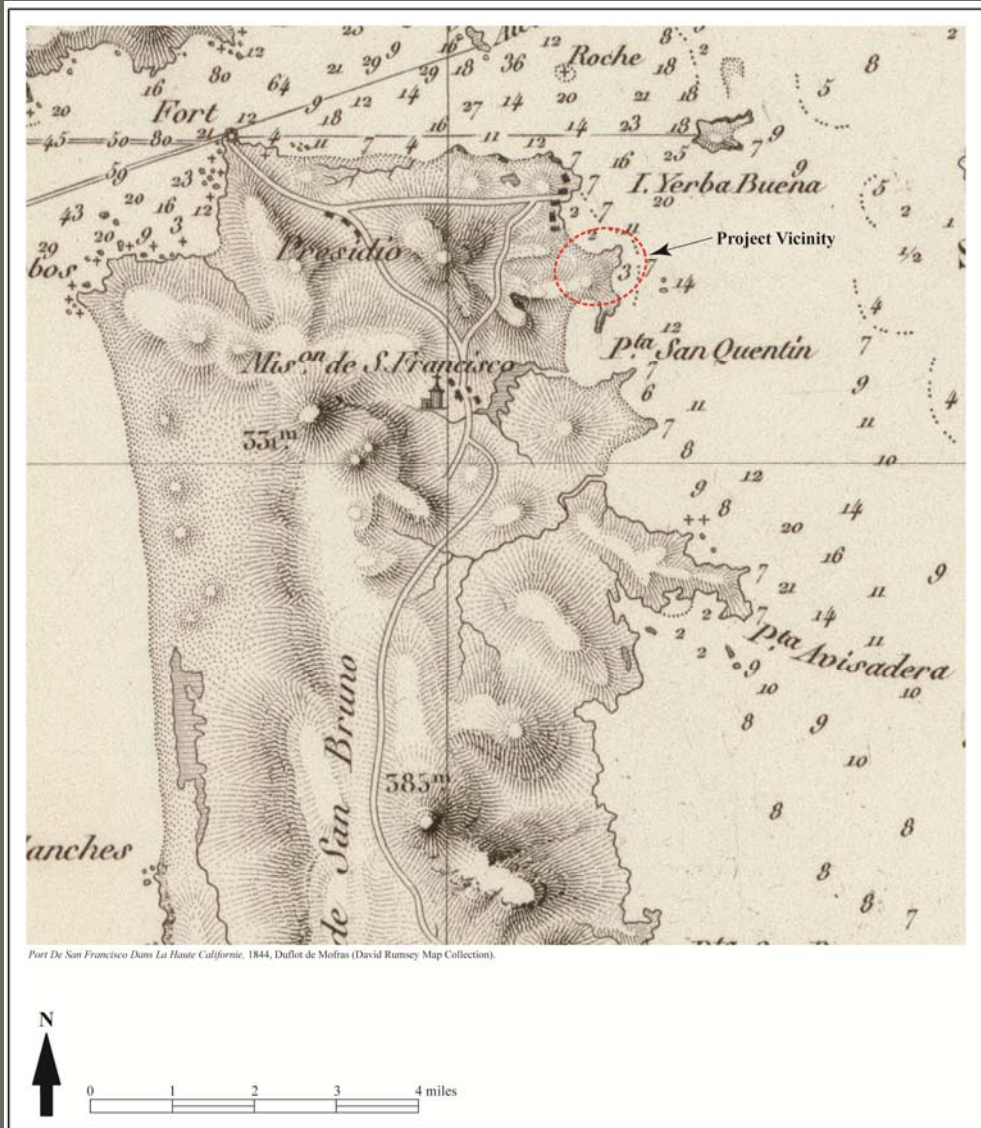
- Agriculture
- Ranching
- Hide and tallow trade
- Sea otter pelt trade

## Presidio

- military

## Yerba Buena Cove

- Calm harbor





Transbay Transit Center

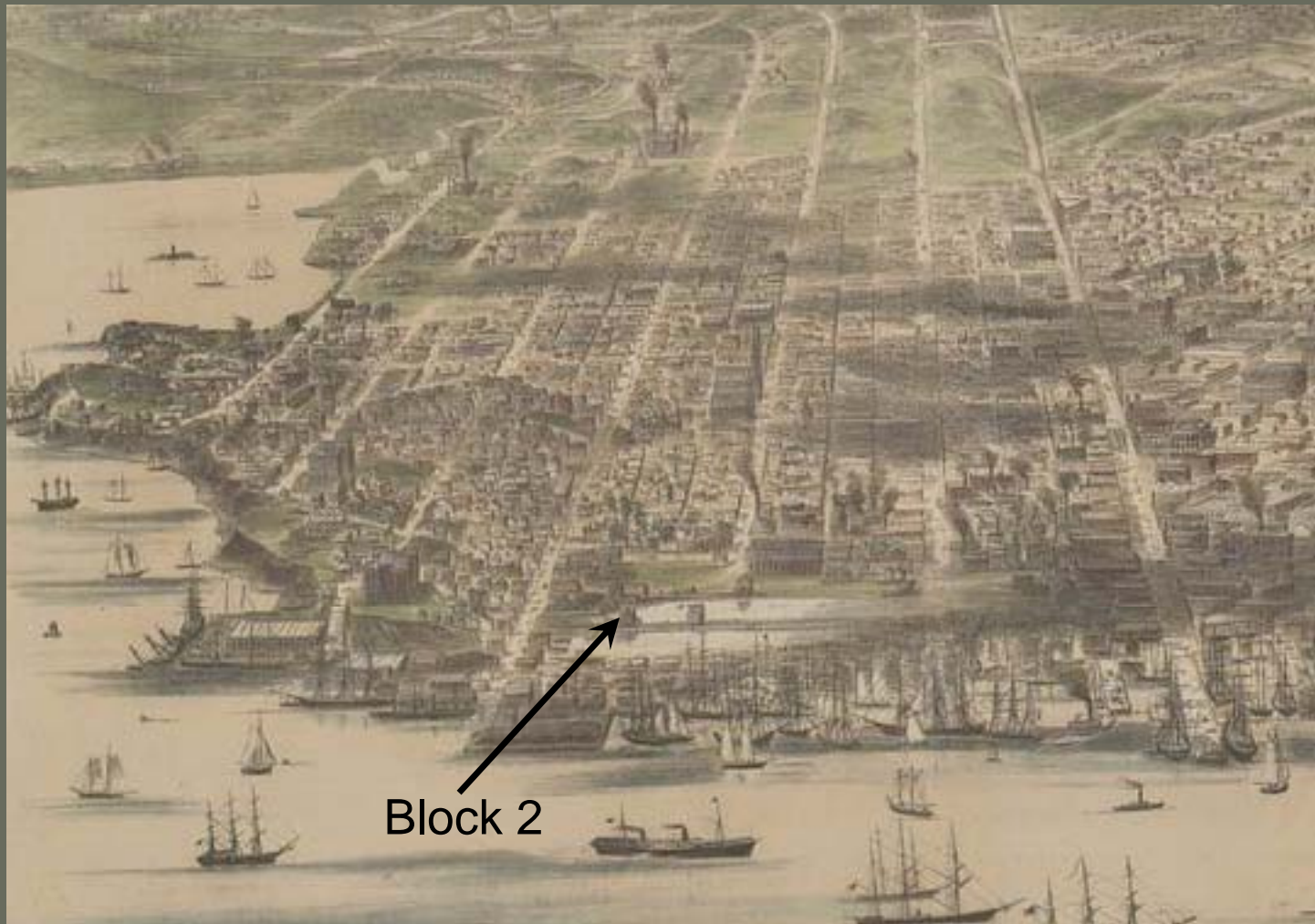
# View from Rincon Hill, 1851





Transbay Transit Center

# Gifford's Birds-Eye View 1864

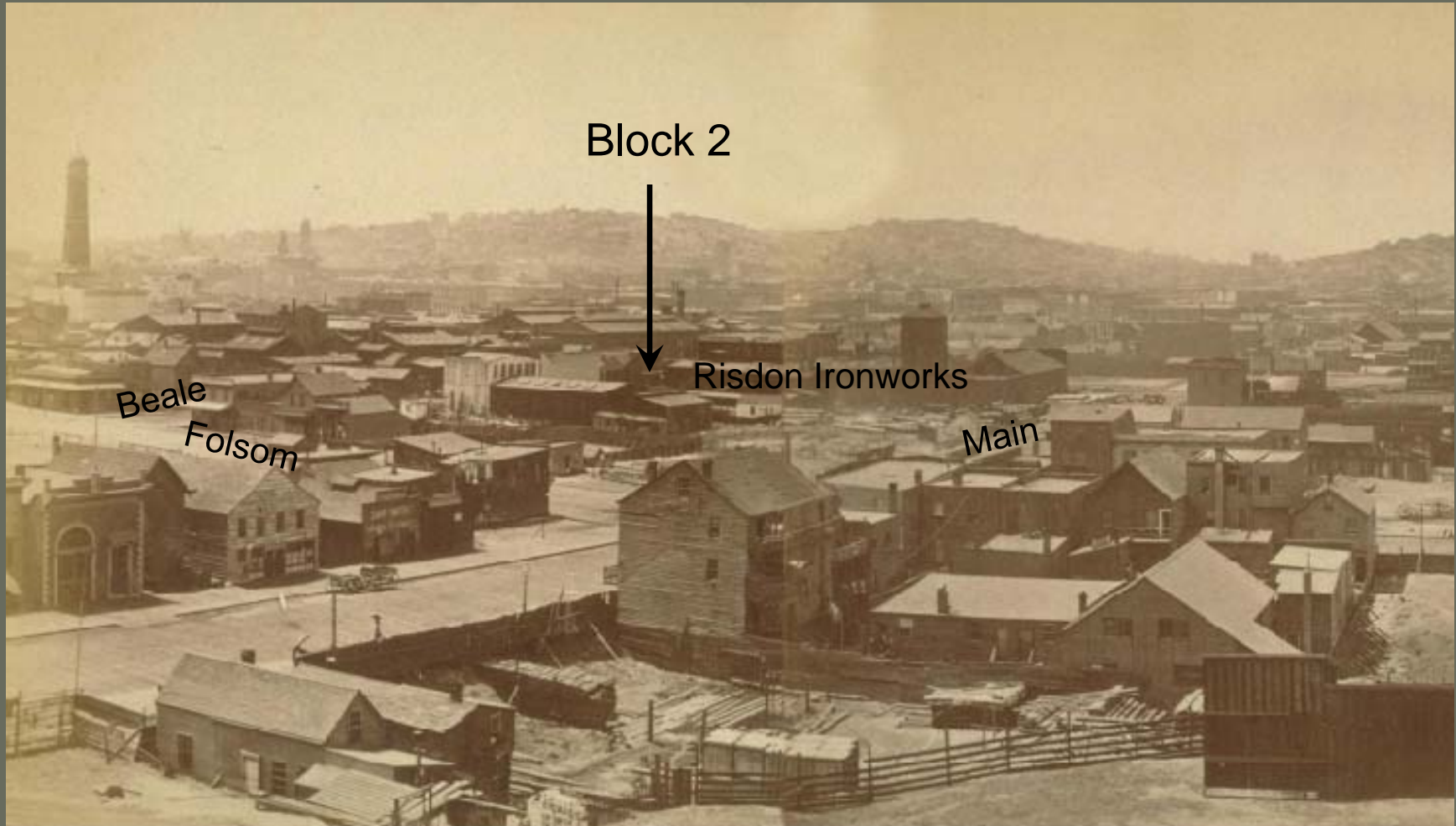


Block 2



Transbay Transit Center

# Industrial Development



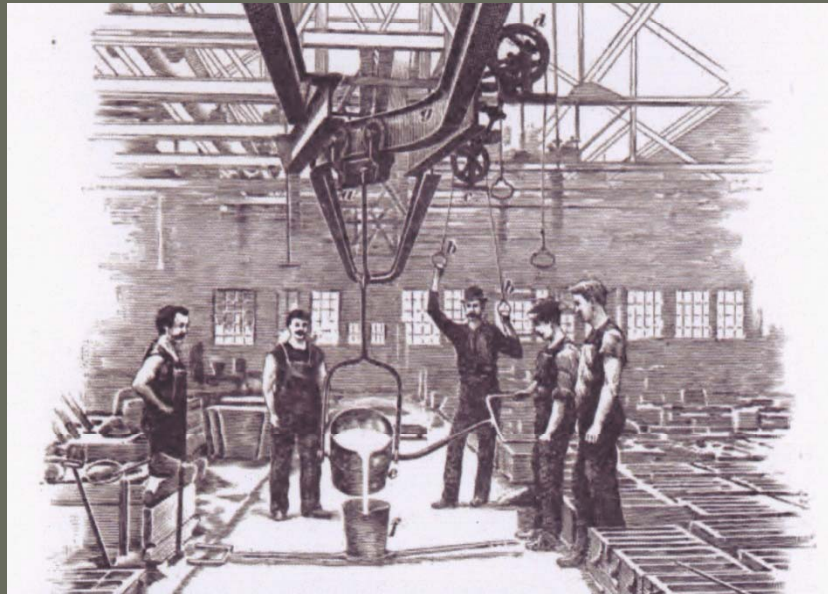
View from Harrison and Main 1872



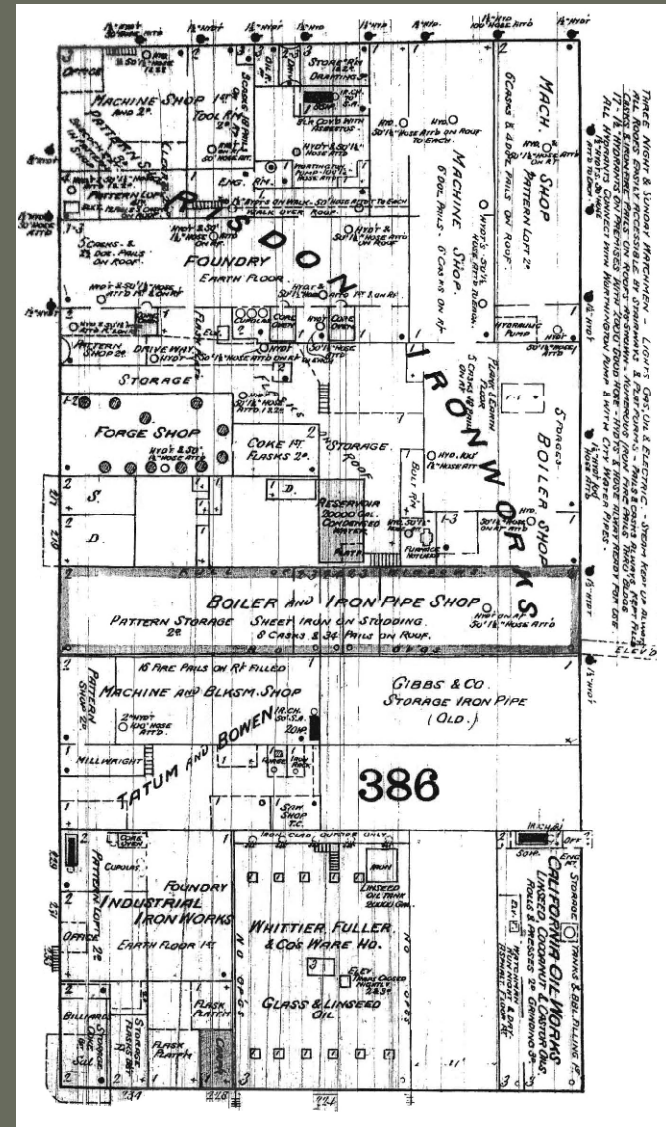
Transbay Transit Center

# Block 2 Industries 1887

- Risdon Ironworks (est. 1868)
- Tatum & Bowen (machine and blacksmith shop)
- Industrial Ironworks
- Whittier Fuller & Co. Warehouse
- California Oil Works



Howard



Beale

Main

Folsom

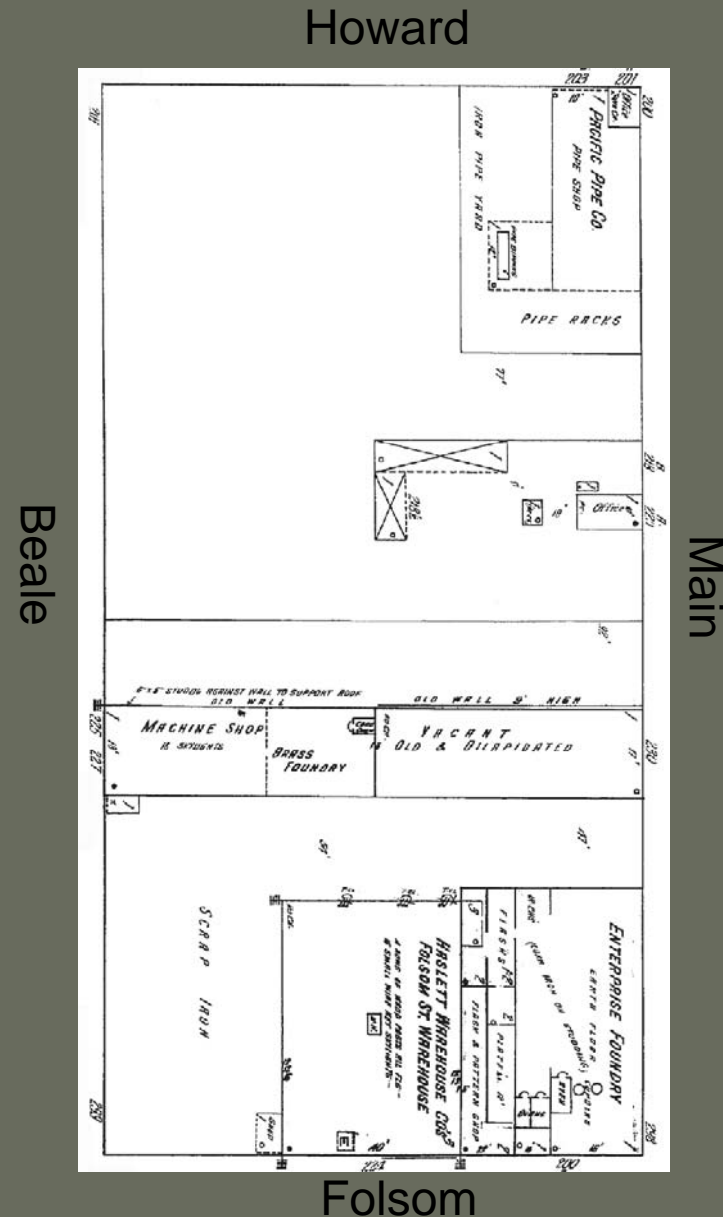
Source: 1887 Sanborn Map



Transbay Transit Center

# Post-quake Rebuilding

- Most of Block 2 vacant land in 1913
- Pacific Pipe Co.
- Machine Shop
- Brass Foundry
- Enterprise Foundry
- Haslett Warehouse
- Scrap Iron Storage
- Vacant Building



Source: 1913 Sanborn Map

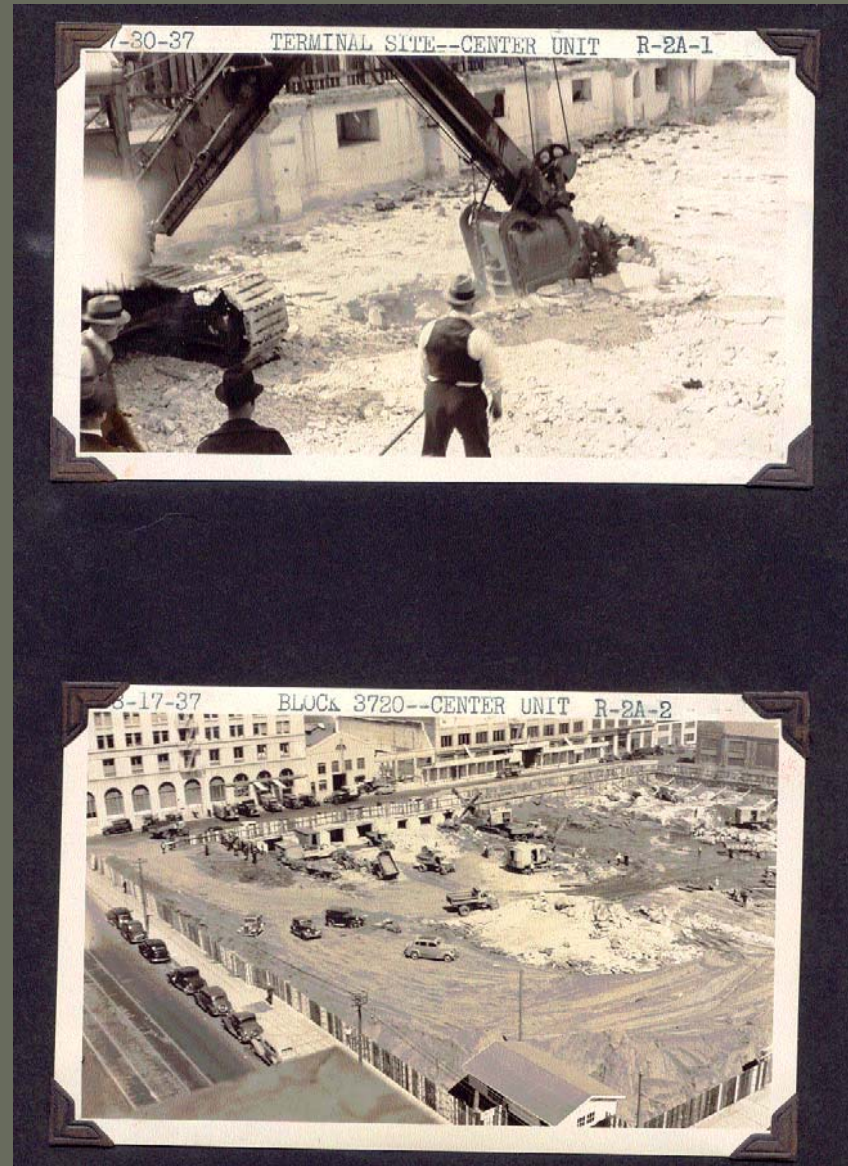




Transbay Transit Center

# Terminal Construction

Photos taken during the excavation of the Transbay Transit Terminal foundation 1937





Transbay Transit Center

# Temporary Terminal Archaeological Testing

View of  
Archaeological  
Test Trench  
Sidewall

Rubble from the  
destruction of the Risdon  
Iron Works (bricks,  
concrete, wire-reinforced  
glass, rusted metal  
fragments, fly wheel





Transbay Transit Center

Industrial objects from  
the Risdon Iron Works  
(1870s to 1890s)  
Temporary Terminal



Stone grinding wheel  
found during  
monitoring

Metal wheel found  
during monitoring





Transbay Transit Center

# Temporary Terminal Archaeological Monitoring



## Cobblestone paving remnant

Documented on historical maps of the block



Transbay Transit Center

# Temporary Terminal Archaeological Monitoring



19<sup>th</sup> century beverage bottles



Transbay Transit Center

# Temporary Terminal Archaeological Monitoring



Medicine bottles, 19<sup>th</sup> century



Transbay Transit Center

# Temporary Terminal Archaeological Monitoring

Ink bottle



Glue bottle





Transbay Transit Center

# Shaft and Shoring Wall Archaeological Treatment

Chinese jar



Chinese tea cup

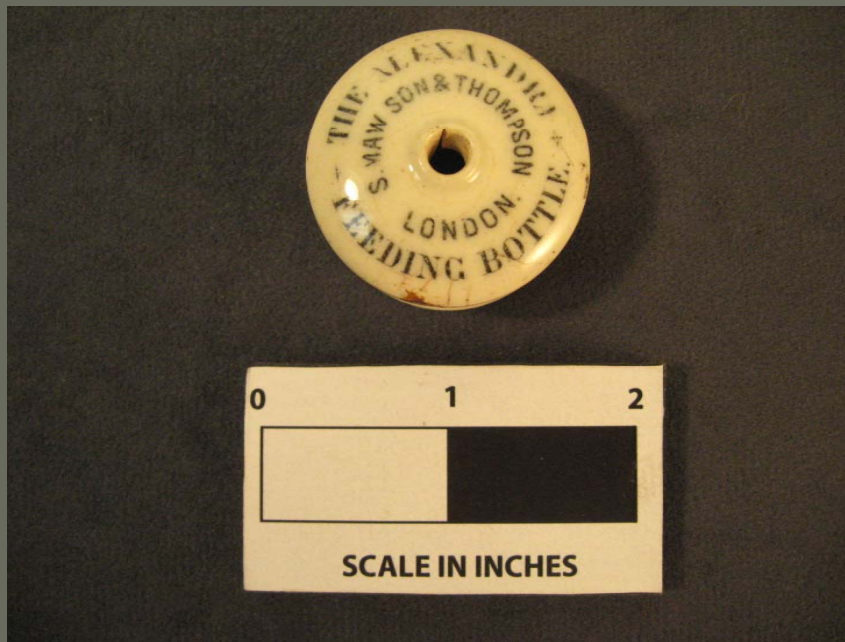






Transbay Transit Center

# Shaft and Shoring Wall Archaeological Treatment



Nursing bottle top ca. 1863-1901



Thimble



Transbay Transit Center

# Shaft and Shoring Wall Archaeological Treatment



Frozen Charlotte 1840s-1850s



Jointed doll 1860s-1880s



Transbay Transit Center

## CONTACT INFORMATION

Transbay Joint Powers Authority

201 Mission Street, Suite 2100

San Francisco, CA 94105

(415) 597-4620

[www.transbaycenter.org](http://www.transbaycenter.org)

**Robert Beck**

Senior Program Manager

[rbeck@transbaycenter.org](mailto:rbeck@transbaycenter.org)

**TJPA**